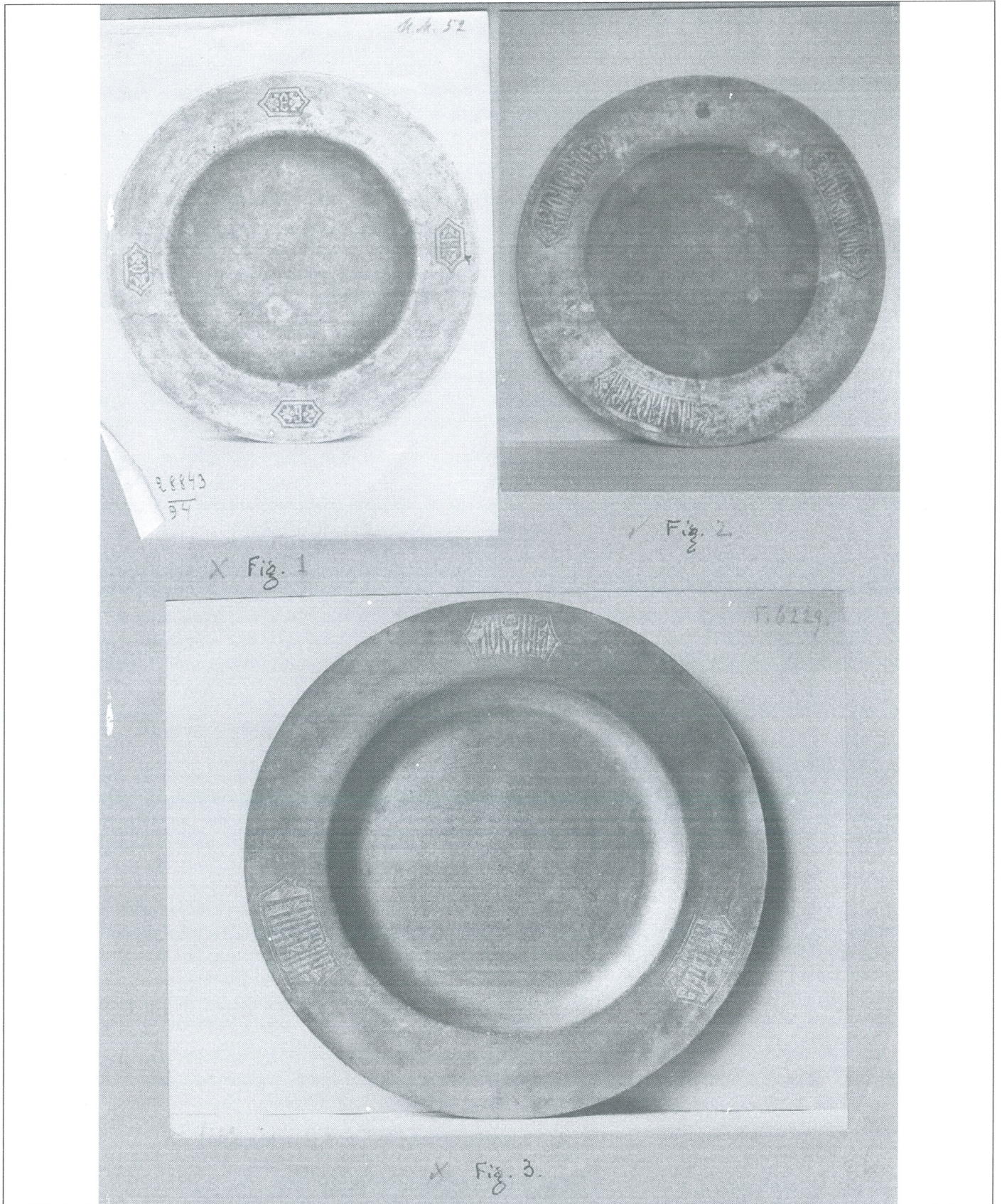


JAT

9546

RUSSIAN PEWTER ILLUSTRATIONS



From Mrs Helen Elkova Ph D, curator of the pewter collection of
Moscow Historical Museum, mail Elkova <2babika@mail.ru>
27-05-2021 and 19-06-2021

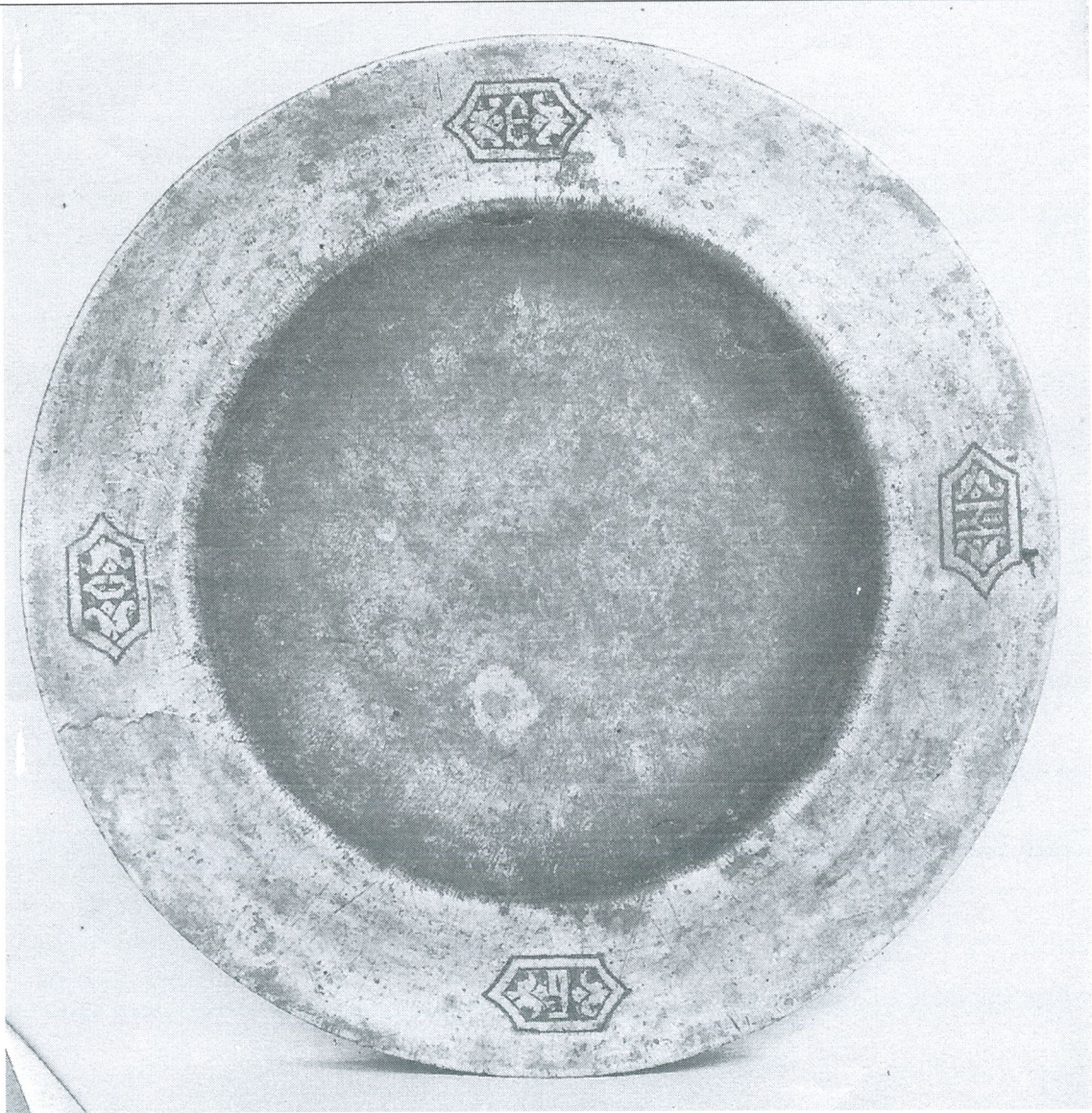


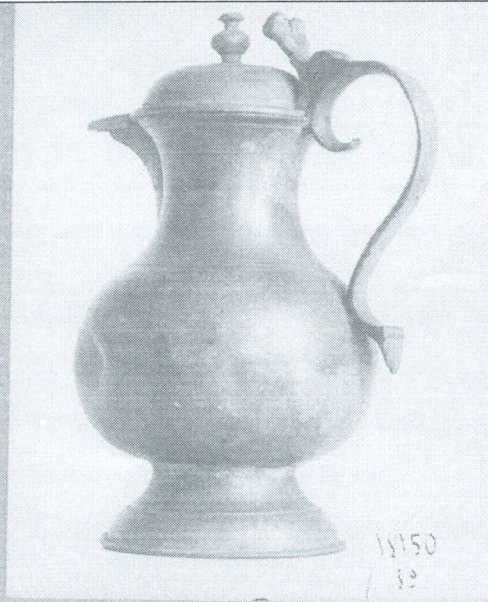
FIG 1 English Pewter, 18th Century, Russian decoration, Historical Museum of Moscow



FIG 2 English Pewter, Russian Decoration, Stieglitz Museum Leningrad, 15" diameter, 17th century

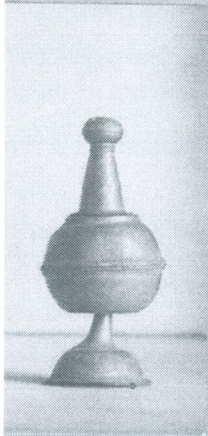


FIG 3 – English Pewter 17th century 9" diameter Russian Decoration in the Gahlback Collection



14150
12

✓ Fig. 4



X Fig. 5



X Fig. 6

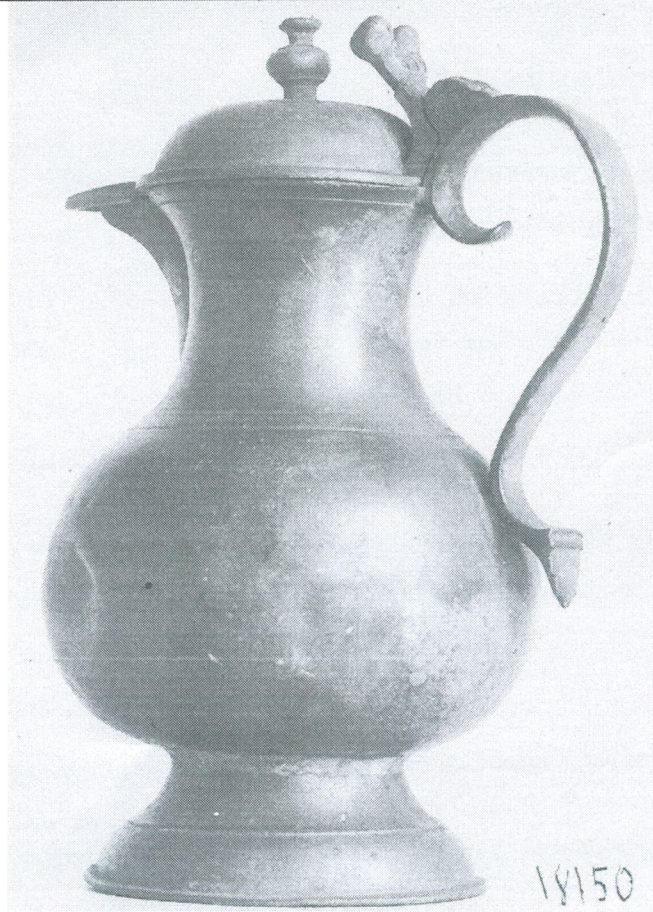


FIG 4 – 17th Century, probably English, Historical Museum of Moscow. Article says 19" in height but more likely 'one 9" in height'.

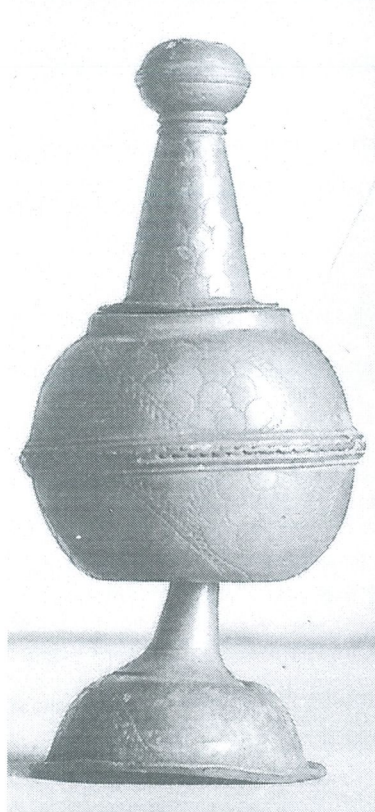


FIG 5 – 7 ½ inches high, 16th Century in Gahlnback Collection (page 6)



FIG 6 – described as 'Holy Supper Travelling Outfit' 18th Century 6" Height Gahlback Collection (page 7)



X Fig. 8

X Fig. 9

X Fig. 7

X Fig. 10



X Fig. 11



X Fig. 12 X Fig. 13



FIG 7 – see page 7



FIG 8 – see page 7

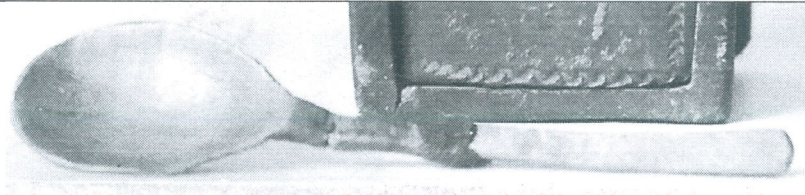


FIG 9 – see page 7

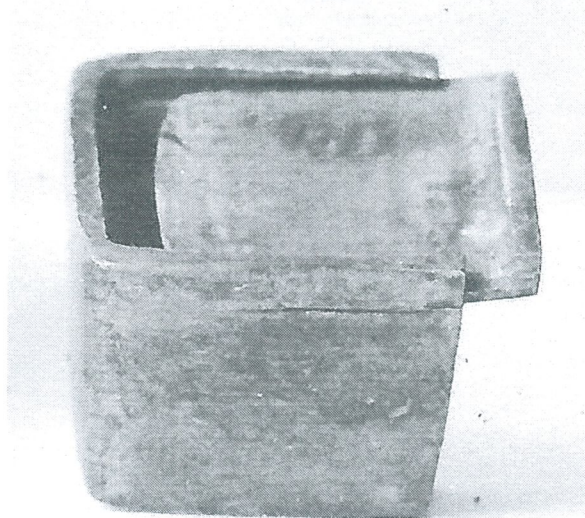


FIG 10 – see page 7



FIG 11 – a Portable Icon Gahlnback Collection



FIG 12 & FIG 13 Chalice and Spoon see page 7



FIG 23 – SCRIPT SAYS ON PAGE 9 – 9" 18TH c WITH THREE SMALL FEET BEAUTIFULLY ENGRAVED

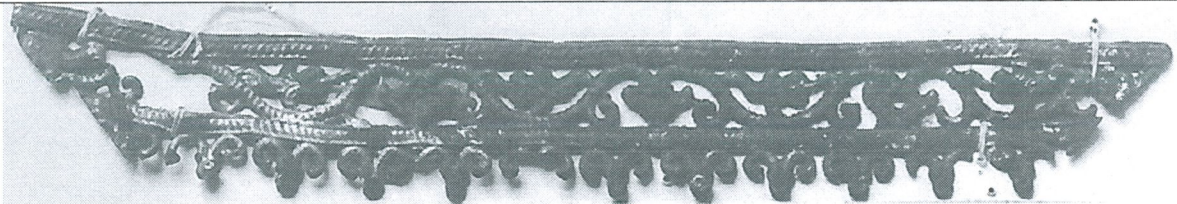


FIG 22

**ITEMS 14 TO 22 ARE THE UNUSUALLY RUSSIAN PIERCED PEWTER
DECORATION IN THE GAHLNBACK COLLECTION**



FIG 21

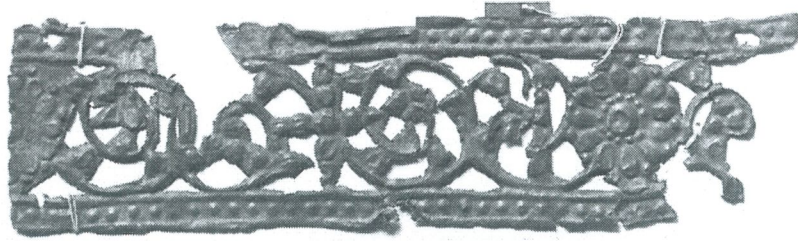


FIG 20



FIG 19



FIG 18

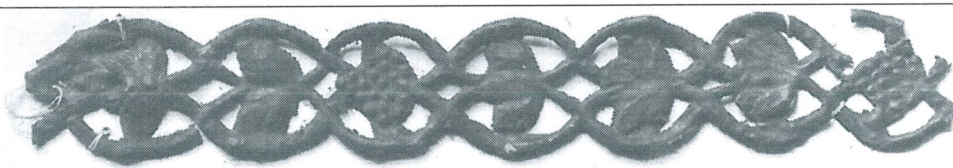


FIG 17



FIG 16



FIG 15



FIG 14

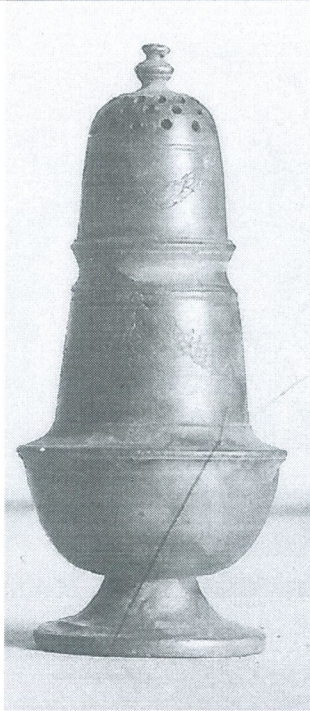


FIG 27 – PAGE 8 BRIEFLY REFERS – sugar castor 18th century 5 ½ inches height.

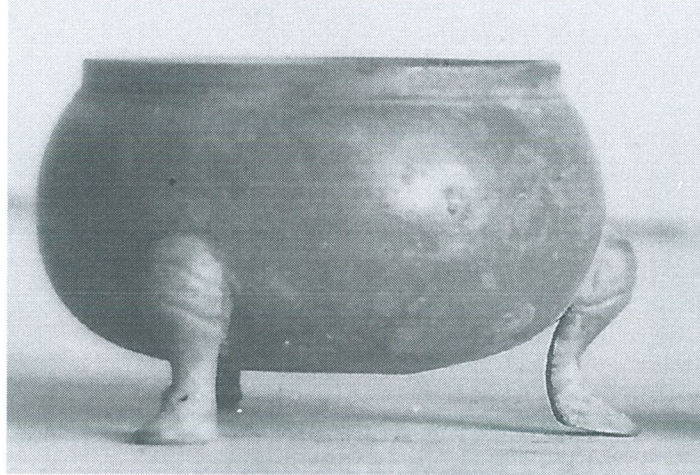


FIG 26



FIG 25 – 6 ½" 18th Century soup tureen with footed cover



FIG 24

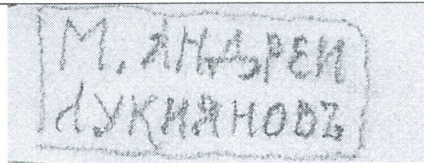


FIG 24a

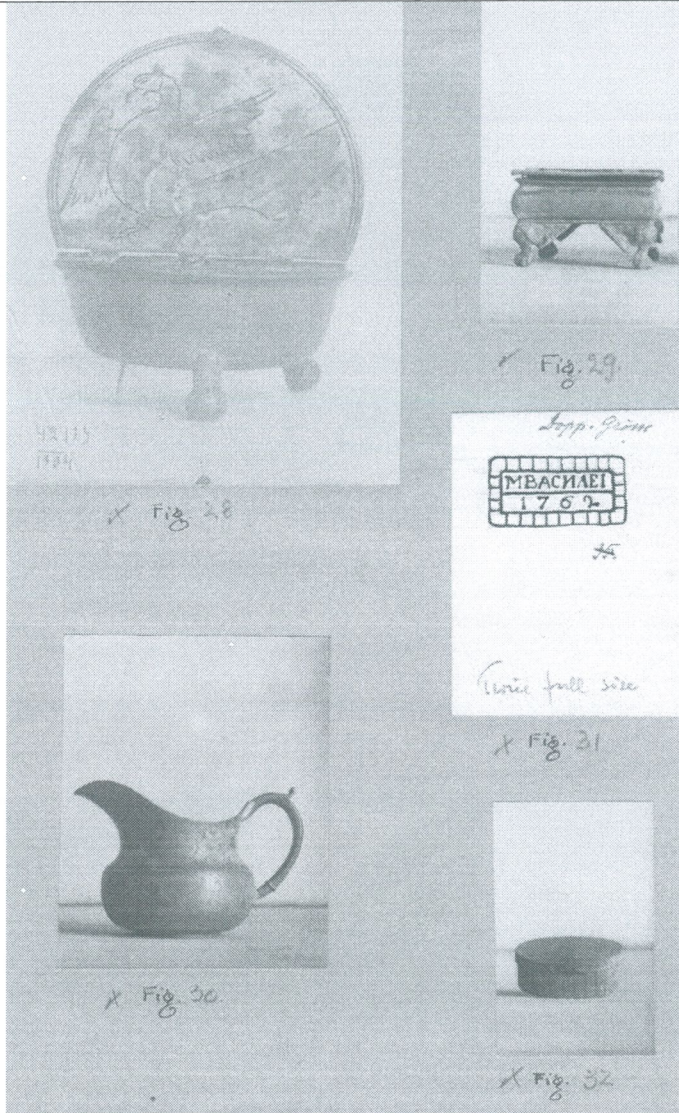




FIG 32 – 18th century snuff box 1 ½" high



FIG 30- 6 inch Jug dated 1856

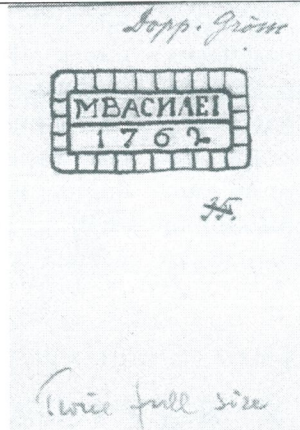


FIG 31

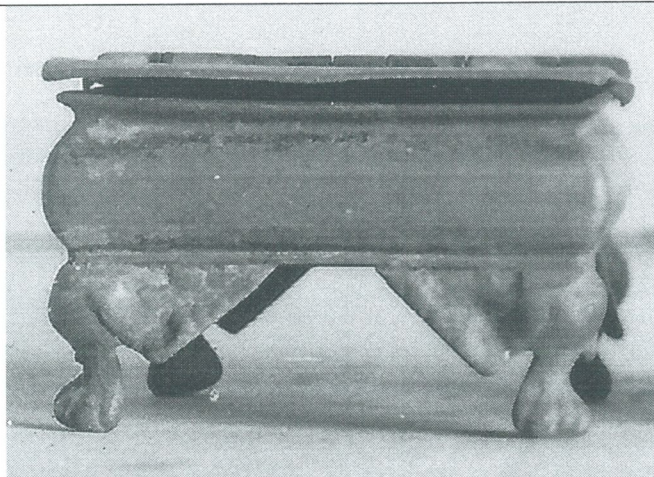
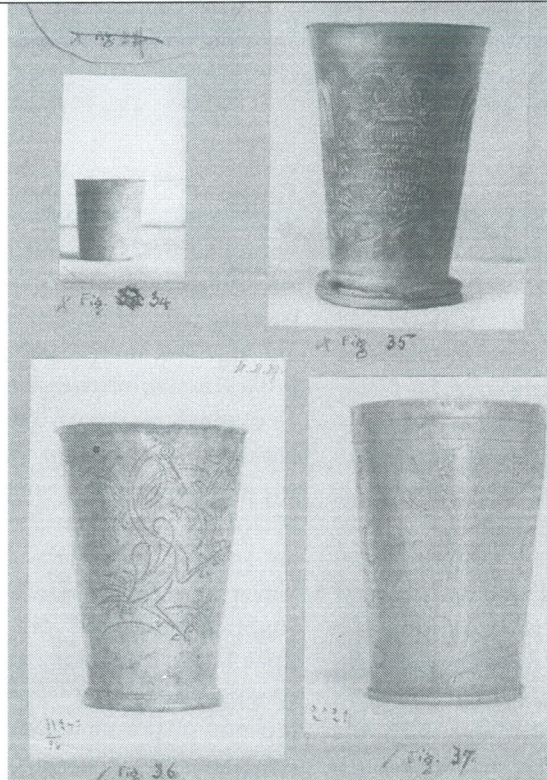


FIG 28 – A Chalice 14th Century in the Gahlback collection identical with sculpture at the Cathedral of Jurjew Polski



FIG 29 – 18th century Spice Box 2 footed and collared (?) Historical Museum Moscow



30 TO 37 BRIEFLY MENTIONED ON PAGE 10 – ANY DETAIL EITHER OMITTED OR CROSSED OUT



FIG 34 – 3 ½" tall Russian Eagle Engraving



FIG 35 – Coronation Goblet 6 1/8" high dated 1730



FIG 36 – 6" tall

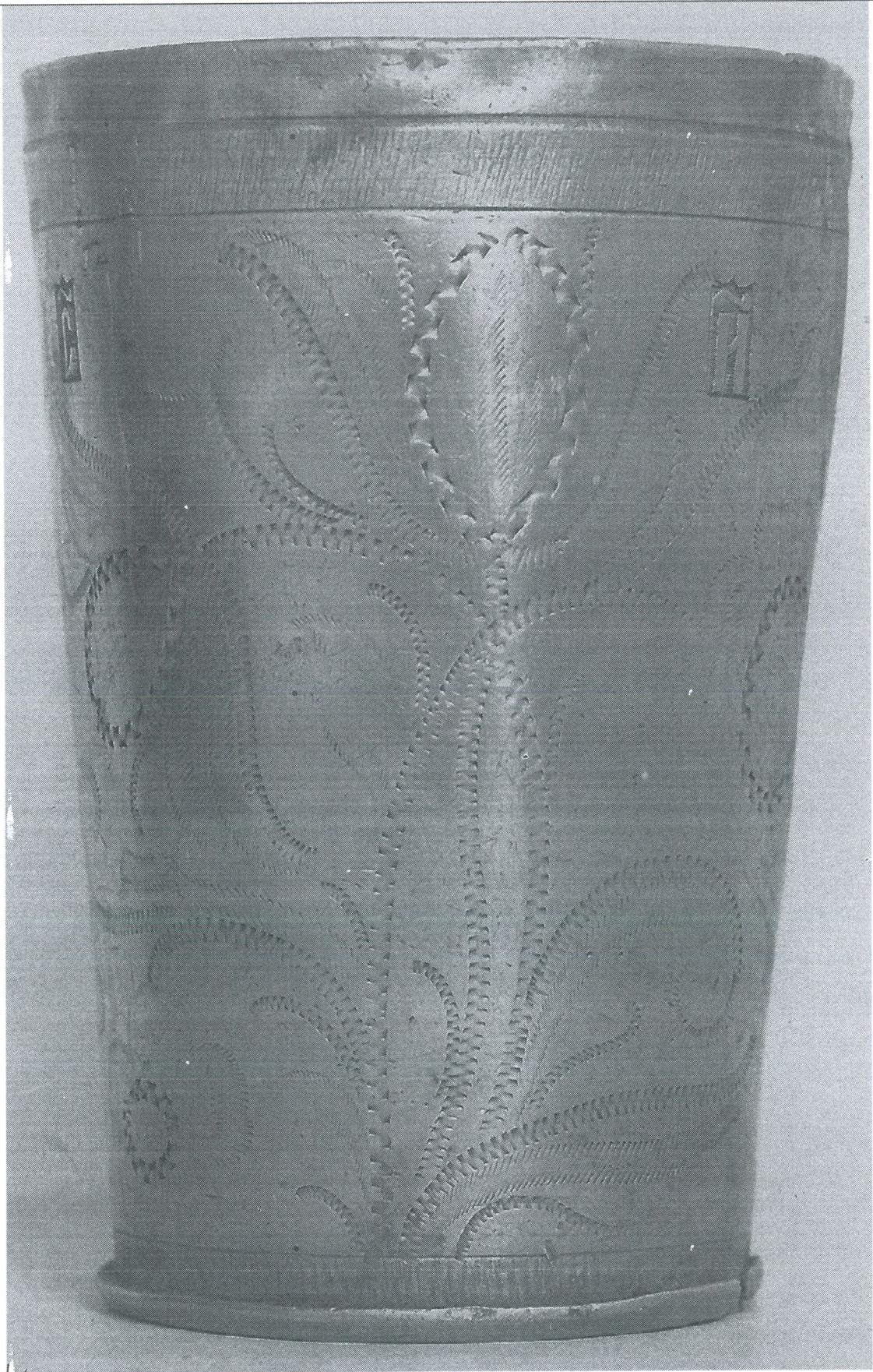
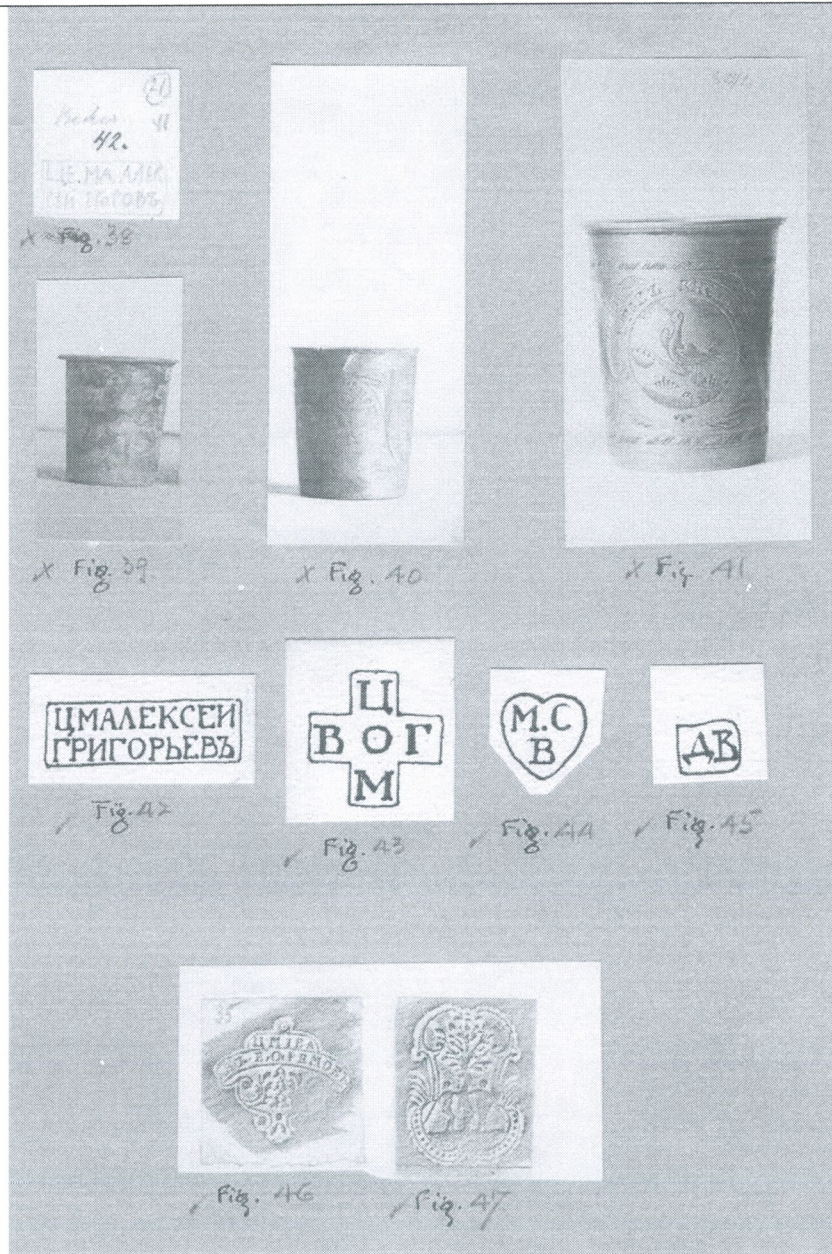


FIG 37 - 3 1/4" tall



BEAKERS FROM THE GAHLBACK COLLECTION – all 3 said to be 18th century - TOUCHES IN THE 'ENGLISH STYLE'



FIG 46



FIG 47



FIG 45



FIG 44

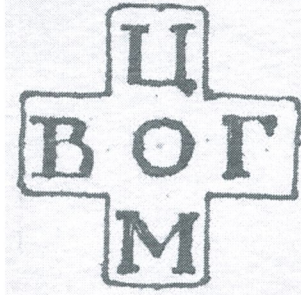


FIG 43

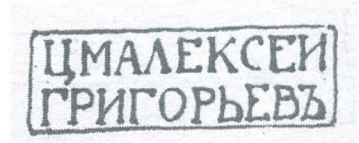


FIG 42

18th C Pewterers Touch



FIG 41

HHC and RMV add comments here that the Oblique Diagonals climbing left to right between two parallel lines may be considered a typical Russian Feature as not recorded elsewhere (? Comment from around 1932)



FIG 40



FIG 39

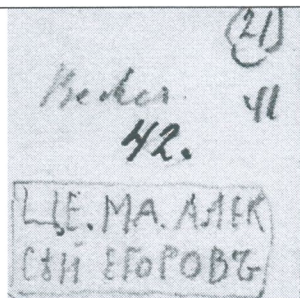


FIG 38

To: Self <hbvanwyk@tiscali.nl>, Andrew Ferrar <andrew.ferrar@gmail.com>,
Subject: Re: Pewter marks of Russian collection.doc
Date sent: Sun, 27 Jun 2021 16:55:20

Dear Mrs. Elkova, dear Tassilo,

As I mailed before to Mrs. Elkova, I sent the marks in the attachment to our president, Jan Beekhuizen. He informed me that unfortunately he couldn't find any of them. But he advised that some of them may be Saxon. I therefore now send this mail also to my friend in Germany, Mr. Tassilo Hofmann. He is the keeper of a huge database on German pewtermarks.

Lieber Tassilo, könntest Du bitte Frau Elkova helfen?

Bitte schick mich ein Kopie wann Du etwas finden könntest.

Mrs. Elkova, if there is anything else we can help you with, please let us know.

With best regards, freundliche Grüßen, Henk van Wijk

Hello Mr Henk van Wijk.

Thank You very much for Your kind intention for help.

It seems that two marks with an angel on my list - with the initials AC and MG - are exactly Dutch, is it possible to decrypt them?

With great interest I've got acquainted with Your site, studying PDF editions now. Judging by the questions, the predominance of products of the late 19th and 20th centuries in your country is noticeable.

Now, I'm sending You images concerning Russian-Dutch relations in the 18th century on the basis of pewter ware. In 1705, in Amsterdam, by order of Peter I, the first Russian book with emblems was printed, which served as an iconographic source for many Russian craftsmen, including pewterers. Samples of pewter items from the 1730-1750s. with engraved emblems from this book are now kept in our museum.

Every good wish, looking forward to further cooperation, Helen Elkova
(Curator of the pewter collection of Moscow Historical Museum)

On 30 May 2021 at 20:46, 2bobika@mail.ru, JOHN BANK wrote:

From: Self <hbvanwyk@tiscali.nl>
To: 2bobika@mail.ru, JOHN BANK <johnstephenbank@btinternet.com>
Subject: (Fwd) Fwd: Pewter marks of Russian collection.doc
Copies to: Andrew Ferrar <andrew.ferrar@gmail.com>, Jan Beekhuizen <info@janbeekhuizen.nl>
Send reply to: hbvanwyk@tiscali.nl
Date sent: Sun, 30 May 2021 20:46:03 +0200

Dear Mrs. Elkova,

With much interest I read your e-mail to Mr. John Bank. I am the librarian of the Dutch Pewter Society (which is in the Dutch language: Nederlandse TinVereniging). John and I are in very good contact. I will send your e-mail to the president of our Society, Mr. Jan Beekhuizen with the request to look at the marks you sent. I hope that we are able to find some for you.

Pewterbank is a very interesting site with lots of information. The Dutch Society also has a website. I advise you to visit it <www.nederlandsetinvereniging.nl> (or google: tinvereniging).

Later this year our data bank on pewter marks will be open for everybody, I will keep you informed. Already now, you can visit the literature list with many scanned articles to be read.

If there is any unscanned publication that you would like to read I can try to find it for you.

With best regards, Henk van Wijk

Hello Helen Elkova, (Curator of the pewter collection of Moscow Historical Museum)
Thank you for your kind remarks regarding my website.

You mention the pieces I show in my wrigglework article these I took from the attached article from an unseen original by Professor Gahlback written in the late 1920s Leningrad Archaeological and Technology Institute and retyped and heavily edited by HH Cotterell - this was intended for a book Cotterell was to produce with a Robert Vetter which was never published.

This is in 2 parts one shows the illustrations I extracted and the other the script as edited by Cotterell.

The earlier article referred to as written by Lucy Cazalet is also attached.

The H H Cotterell reference book is on my website at -

<https://pewterbank.co.uk/old-pewter-its-makers-and-marks-by-h-h-cotterell/>

(you wrote - our biblioteks do not have too many European Index of Pewterers (in particular, alas! I can't find Cotterell).)

If you have any article relating to British Pewter in Russia or Russian pewter that my website could publish without charge - I would be delighted to read same. My website sells nothing, takes no advertising and is solely to help novice collectors.

In the Pewter marks you show - I have been unable to find W Green London 1630. The Lamb and flag preceding it looks like the pewterers surname starts with an I and I will search for it. No 15 Jonathan Cotton is known but the others are of European pewter which my website does not cover. I will send a copy of this email to the Archivist of the Dutch Pewter Society and also to the UK Pewter Society section that deals with the Society website queries and has hold of all reference books as to European marks.

Both these people are polite, thorough, and deeply interested although often very busy, but I feel sure they will respond to your query or parts of it as they can.

Every good wish

John

----- Original Message -----

From: "John Bank" <johnsbank@me.com>

To: "John Bank" <johnstephenbank@btinternet.com>

Sent: Sunday, 30 May, 21 At 06:41

Subject: Fwd: Pewter marks of Russian collection.doc

Sent from my iPad

Begin forwarded message:

From: Elkov <2bobika@mail.ru>

Date: 27 May 2021 at 21:01:25 BST

To: johnsbank@me.com

Subject: Pewter marks of Russian collection.doc

Reply-To: Elkov <2bobika@mail.ru>

Dear Mr. John Bank!

I'm curator of the pewter collection of Moscow Historical Museum, I participated in the organization of an important exhibition «Britannia – Russia» in Moscow Kremlin in 2003, my article «British pewter in Russian history, every days life and literature» is published in a Journal of Cambridge University.

I like Your website very much, and with interest and benefit I study it in my research on Russian tin (by the way, in your article on wrigglework you have posted several excellent objects of Russian work from our museum)

And now I'm seeking for information about touch-marks of several pewterware in our Museum (mostly of platterie) for a publication of the complet catalogue of pewter in Russia of XVII–XXth century, y compris english and european

items, used in Russia. They were used at the court of Tsarine Sophia and her sisters and brothers – Tsars Ivan & Peter (in his youth age), what is known from the engraved signatures of dishes and tellers.

Some of the touchmarks are known to me, and in first – those of Thomas Shackle, the most popular English pewterer in Russia.

Unfortunately, our biblioteks do not have too many European Index of Pewterers (in particular, alas! I can't find *Cotterell*). Therefore, I would ask you (if possible) to help me in identifying near 20 undeciphered touchmarks, list of which with photos I'm sending.

I'm very interested in their attribution, and hope for interesting partnership.

With best regards Ph.D. Helen Elkova, Moscow, Russia

----- End of forwarded message -----

Attachments: C:\Users\HBC813~1.VAN\AppData\Local\Temp\WPM\$DIEZ.PM\$

SYMBOLA
ET
EMBLEMATA

Fussu atque auspiciis

SACERRIMÆ SUÆ MAJESTATIS
AUGUSTISSIMI AC SERENISSIMI
IMPERATORIS MOSCHOVIÆ
MAGNI DOMINI CZARIS, ET
MAGNI DUCIS

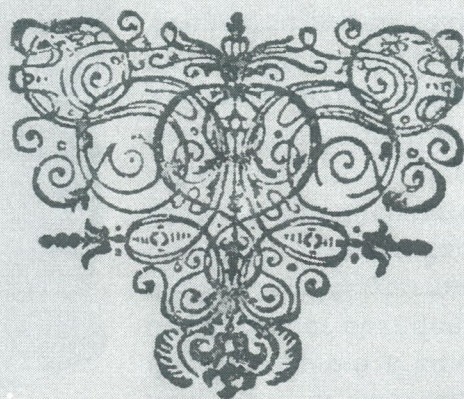
PETRI ALEXEIDIS,

rotius Magnæ, Parvæ & Albæ ROSSIÆ, nec non aliarum
multarum Potestatum atque Dominiorum

Orientalium, Occidentalium Aquilonariumque

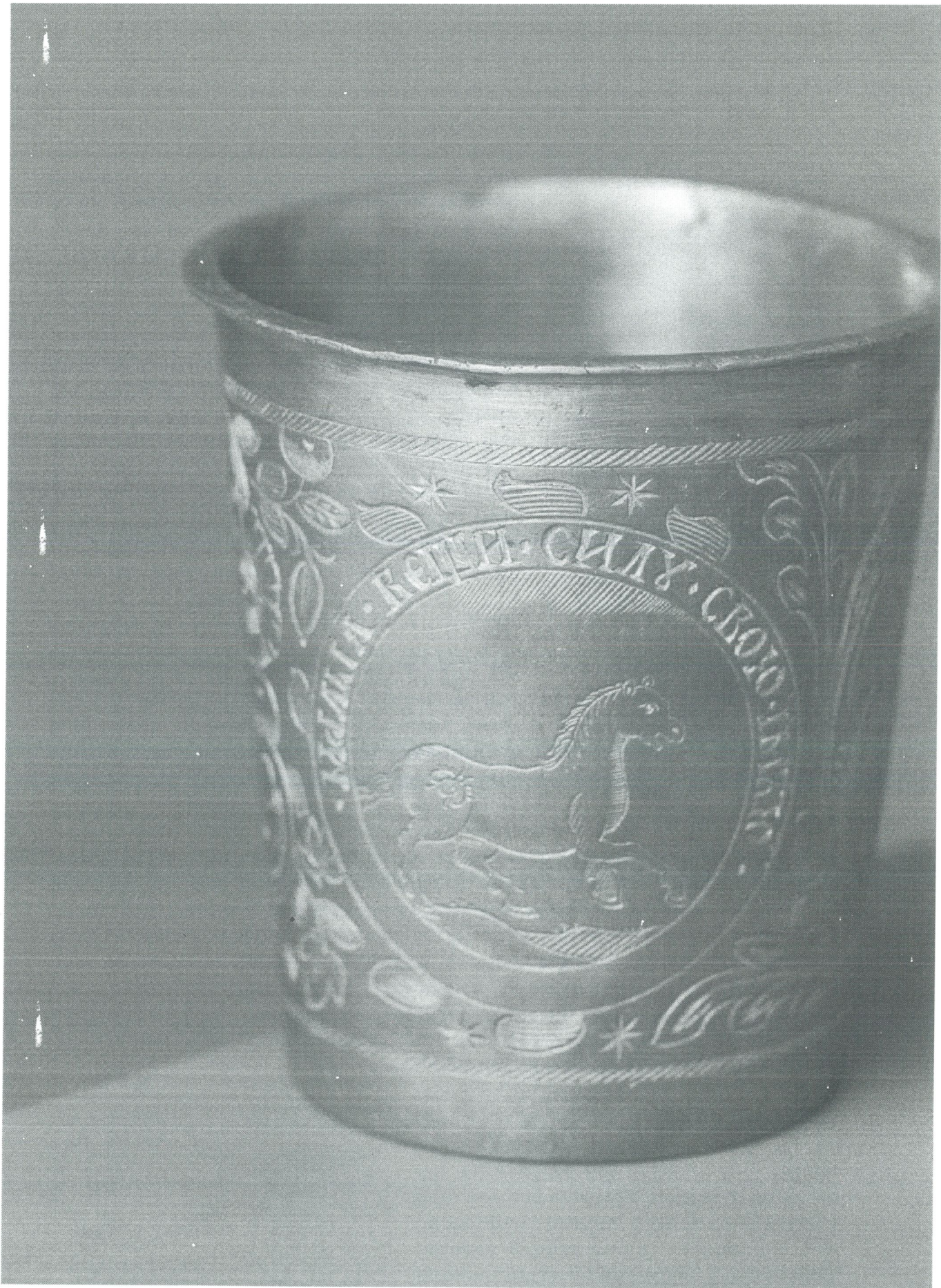
SUPREMI MONARCHÆ,

excusa.



AMSTELÆDAMI

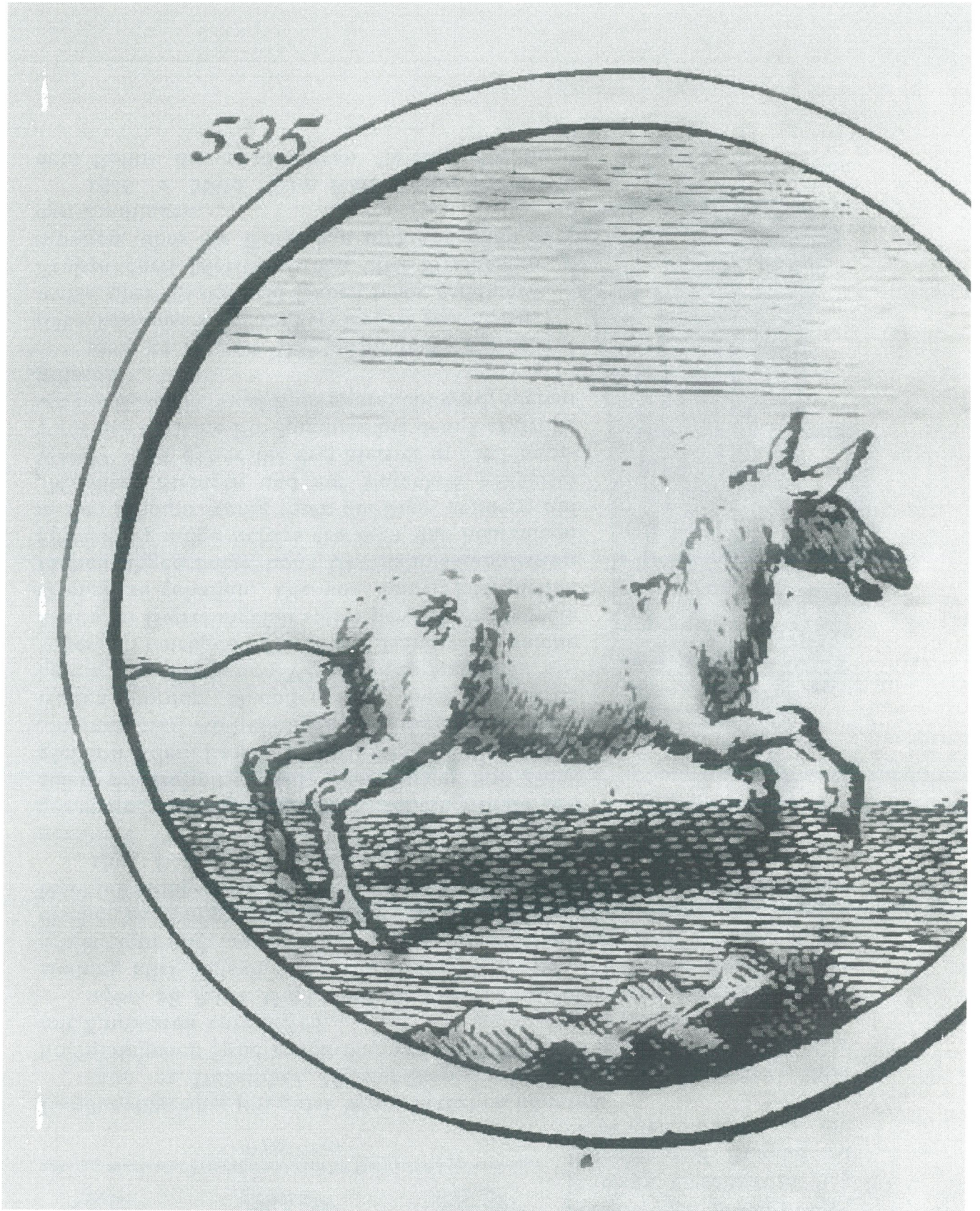
Apud HENRICUM WETSTENIUM. Anno 1705.

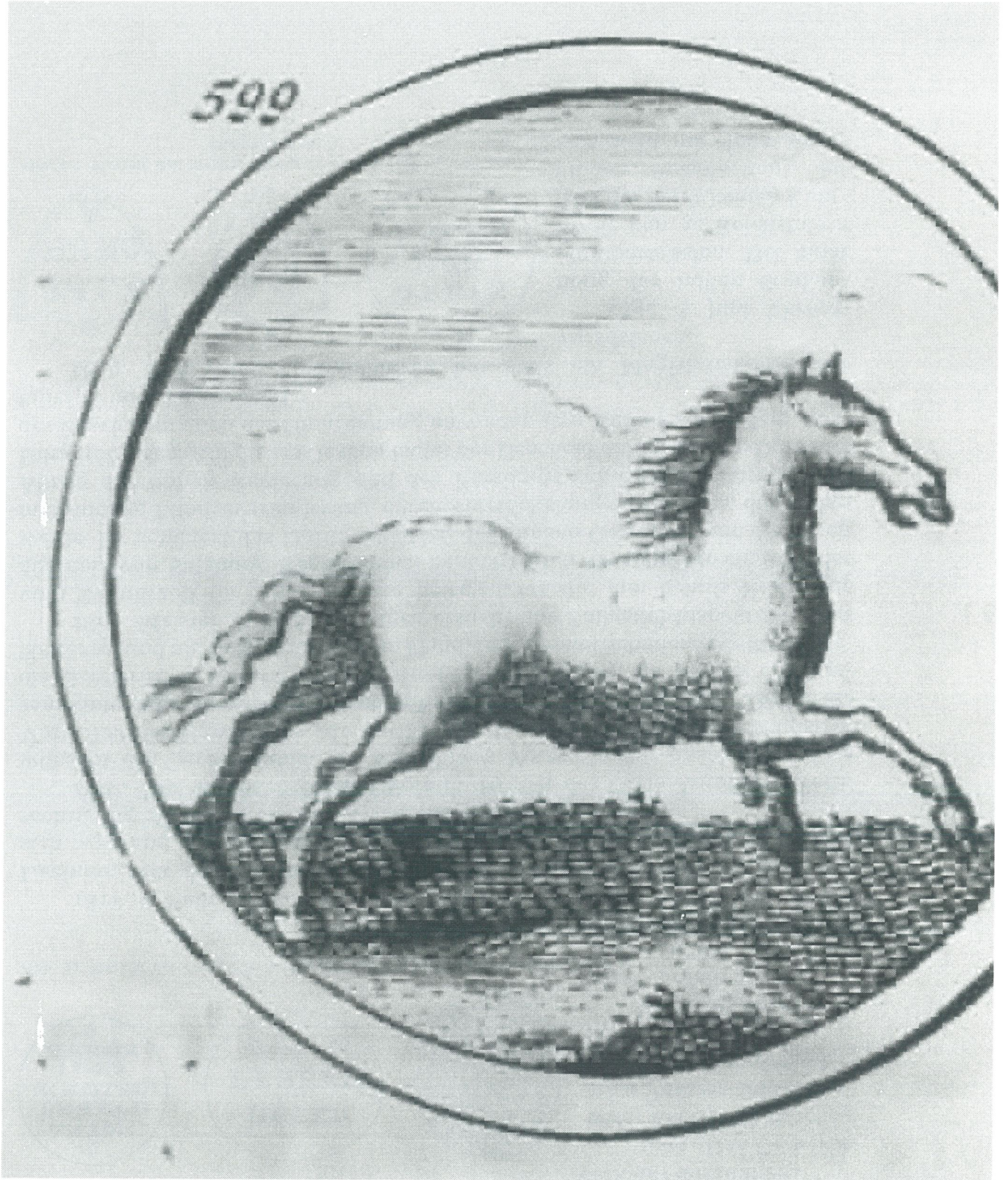












428



