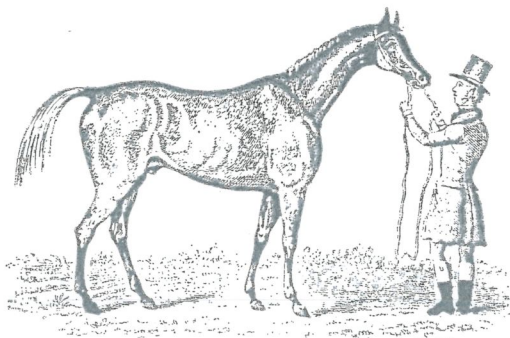


UPLANDS
MELTON ROAD, EDWALTON
NOTTINGHAMSHIRE

The Remaining
FURNISHING CONTENTS



Wednesday, 22nd October, 1969

Auctioneers

NEALE & SON

- 14 54 An Elegant Set of Three George III Old English Pattern Table Spoons with well-formed bowls, London 1805, 6 ozs. 15 dwts.
- 145 55 A Superb Mid-Victorian Circular Fluted Dessert Basket, the broad border decorated alternate panels of formalised piercing and engraved arabesques with cast fruit appliques, crest to centre, swing handle and raised upon a short fluted stem foot, 12 $\frac{3}{4}$ " diameter, Birmingham 1854, 36 ozs. 10 dwts.
- 200 56 A Bold George III Four-Egg Cruet Stand of substantial Regency design with gadroon cast rims and palmette motifs, raised upon lion's paw and rosette supports, the bucket shaped cups cast borders of palmettes and shells, London 1812/14
- 150 57 A Pair of George III Goblet Cups, the lobed bodies supported upon slender stem bases, gilded interiors, 6 $\frac{3}{4}$ " high, London 1816, 21 ozs. 10 dwts.
- 50 58 A George III Lemon Strainer with pierced lug, 4" diameter, London 1778, 3 ozs. 5 dwts.
- ~~59~~ 59 A Charming George II Baluster Cream Jug with shaped rim, the body repousse with rococo foliage and wrythen flutes, raised upon three shell cast and trifold supports, double scroll floral cast handle, 4" high, London 1759
- 36 60 A pair of George III small circular compressed salts with egg-and-dart cast rims, raised upon scroll and hoof supports, 2 $\frac{1}{4}$ " diameter, London 1761
- 200 61 A Fine Pair of George III Table Candlesticks of Handsome Regency Design, the tapering vasular stems having gadroon cast shoulders with lobing, circular bases crested with gadroon borders, the campagna shaped sconces lobed and fitted detachable nozzles, 11" high, fully marked, Sheffield 1816, loaded
- 34 62 A Victorian boat shaped sugar basin and cover of Regency design with reeds to body and gadroon mouldings to rim, raised upon ball supports with hardwood finial, Sheffield 1896, 11 ozs. 15 dwts.
- 36 63 A coffee pot of baluster form having egg-and-dart mouldings, fitted hardwood scroll handle and finial, 8" high, modern, 20 ozs. 10 dwts.
- 42 64 A rectangular shaped-corner salver with gadroon mouldings to rim and raised upon four scroll feet, 10" square, modern, 20 ozs. 10 dwts.
- 52 65 A Pair of Victorian Oval Shaped-Edge Trays with fluted borders decorated repousse and engraved panels of floral pendant scrollwork, 12 $\frac{1}{4}$ " long, London 1894
- 36 66 A Large Victorian Baluster Castor of Queen Anne Design, the pierced wrythen moulded cover having lofty finial, lobed body and base, 9" high, London 1898, 7 ozs.
- 67—75

THE COLLECTION OF ENGLISH PEWTER

- 60 76 A George III lidded tankard with double domed hinged cover having semi-erect thumbpiece, plain cylindrical drum with moulded foot, scroll handle with bulbous terminal, indistinct marks on drum, height overall 5", circa 1770

- 145 77 A Set of Three Channel Islands Measures of Jersey Type with hinged heart-shaped covers and twin acorn thumbpieces, made by John De St. Croix (Cott. 1360), heights overall 10½", 8¼", 6½", all second half of the XVIIIth Century
for examples of this type see Michaelis' 'Antique Pewter of the British Isles, Pl. XIV, fig. 44
- 32 78 A characteristic English lidded baluster measure with hinged flat cover having bud thumbpiece, plain baluster drum, unmarked, overall height 3½", circa 1690; also a similar lidded baluster measure of the double volute type, unmarked, overall height 3½", circa 1740-50
for similar examples see Cotterell's 'Old Pewter', Pl. XLVIc and Pl. XLVI d
- M 95 79 A Series of Three English Lidded Baluster Measures with double volute thumbpieces to the hinged flat covers, plain baluster bodies fitted scroll handles with bulbous terminals, overall heights 6", 5", 4", circa 1760-70
for measures of this type see Cotterell's 'Old Pewter', Pl. XLVI d and Michaelis' 'Antique Pewter of the British Isles,' Pl. XII, fig. 38
- 62 80 A Large Measure of Similar Type, unmarked, overall height 8", circa 1770
See Michaelis' 'Antique Pewter of the British Isles,' Pl. XII, fig. 38
- 32 80a A small two-handed cup of flared form fitted double scroll handles, moulded foot, maker's mark B.W. (Cott. 5479), height 3", XIXth Century
- 380
Jellinek 81 A Rare Beaker of Flared Form raised upon a plain moulded foot, the sides engraved with a bold strapwork of stylised Tudor Rose sprays, the rim attractively engraved with stag, boar and hare hunting scenes, unmarked, height 6¼", late XVIth/early XVIIth Century
- 520
M 82 A Rare William and Mary Lidded Tankard, the flat-top cover having denticulated lip, pierced scroll thumbpiece and wriggled work decoration of stylised tulips, the cylindrical drum similarly decorated with doves, flowerheads and acorns framing an oval panel enclosing half length portraits of William III and Mary surmounted by a crown and bearing the monogram WMR, indistinct maker's mark to base, height overall 5¾", circa 1690
See Michaelis' 'Antique Pewter of the British Isles,' Pl. VI, fig. 27, for a tankard with identical portrait engraving
(see illustration)
- M 155 83 A Rare Queen Anne Tavern Pot of slightly tapered cylindrical form with two fillets to drum and bold scroll handle with fish-tail terminal, unmarked, height 6½", circa 1710
for pots of this type see Michaelis' 'Antique Pewter of the British Isles,' Pl. VIII, figs. 30 and 31
Poor condition
- 150 84 A Charles II Booged Porringer with 'coronet' lug, made by Lawrence Warren (Cott. 4970), diameter 5¼", circa 1680
for an identical lug on a later porringer see Michaelis' 'Antique Pewter of the British Isles,' Pl. XX, fig. 55

- 75 85 **A George II Lidded Tankard**, the shallow double domed cover fitted semi-erect thumb-piece, cylindrical drum with fillet to waist and moulded base, scroll handle with bulbous terminal, maker's mark AC, height overall 7 $\frac{1}{4}$ " , circa 1740
M
- An almost identical example illustrated in Cotterell's 'Old Pewter', Pl. LXXIIC*
- 80 86 **A Handsome George II Cylindrical Tankard** with lofty double domed and hinged cover having ramshorn thumbpiece, the slightly tapered body having fillet to waist with moulded base, scroll handle, made by Humphrey Evans, Exeter (Cott. No. 1586), height overall 7 $\frac{1}{4}$ " , circa 1740
M
- 95 87 **A Fine Queen Anne Lidded Tankard**, the double domed hinged cover having denticulations to lip and unusual pierced ramshorn with scroll thumbpiece, the plain cylindrical drum having ovolo moulded base, well formed scroll handle with ramshorn terminals, indistinct marks on lip, height overall 7 $\frac{1}{8}$ " , circa 1715
Hills
- for tankards of similar type see Cotterell's 'Old Pewter', Pl. LXXIIa*
- 190 88 **A William and Mary Candlestick**, the cylindrical column having a single fillet above a bold ball knob with wrythen gadroon mouldings, continuous panels of upright gadroons to the circular base and underside of scone, unmarked, height 7 $\frac{1}{8}$ " , diam. of base 4 $\frac{3}{8}$ " , circa 1690
Hills
- for a candlestick with similar decoration see Cotterell's 'Pewter Down The Ages,' fig. 98*
(see illustration)
- 120 89 **A Fine Irish Chalice**, the cylindrical bucket shaped bowl decorated two fillets, supported upon a baluster stem terminating in a circular spreading and moulded foot, unmarked, height 8" , second half of the XVIIIth Century
- from the Yeates Collection — illustrated in 'Old British Pewter' by A. V. Sutherland-Graeme No. 8. The companion chalice formerly in the Port Collection, now in the Victoria and Albert Museum, illustrated by Cotterell in 'Old Pewter', Pl. XXIXc*
- 160 90 **A Fine Charles II Flagon**, the hinged Beefeater cover having twin cusped thumbpiece, plain cylindrical drum with skirted base and elongated scroll handle, indistinct maker's mark to cover, height to lip 7 $\frac{3}{8}$ " , height overall 9 $\frac{1}{4}$ " , circa 1680
M
- for a flagon of almost precisely similar design to this and the following Lot see Michaelis' 'Antique Pewter of the British Isles,' Pl. XXV, fig. 63*
- M 160 90A **A Fine Charles II Flagon** of similar design to the preceding Lot, marked on cover and base (Cott. No. 6018a), height to lip 7 $\frac{1}{4}$ " , height overall 9 $\frac{1}{4}$ " , circa 1680
- 140 91 **A William and Mary Capstan Salt** with band of gadroons at shoulders and base, indented moulding to waist, indistinct maker's mark to reverse of bowl, height 2 $\frac{5}{8}$ " , diam. of base 3" , circa 1690
M
- for a similar salt see Cotterell's 'Pewter Down The Ages,' fig. 102*
(see illustration)
- M 54 92 A bulbous salt, maker's mark IH, 2 $\frac{3}{8}$ " diameter, circa 1700
- 22 93 A pair of plain circular cup salts upon short stemmed bases, diameter 2 $\frac{3}{4}$ " , unmarked, mid-XVIIIth Century; a circular cup salt with moulded rim and base, unmarked, circa 1770

- 160 94 A Good Charles II Lidded Tankard, the flat hinged cover having denticulations to lip with ramshorn thumbpiece, plain cylindrical drum with moulded base and scroll handle, indistinct maker's mark to base, height overall $6\frac{1}{8}$ " , circa 1680
for similar examples see Cotterell's 'Old Pewter', Pl. LXXIc
- 115 97 A Fine William and Mary Charger with triple-reeded rim and lightly hammered overall, this well marked piece by Edward Quick (Cott. No. 3802a), diam. $18\frac{1}{4}$ " , circa 1690
- 360 98 A Handsome Charles II Large Charger with triple-reeded rim, maker's mark HW, diam. $23\frac{3}{4}$ " , circa 1685
- M 70 99 A William and Mary Plain Rim Charger, maker's mark BS (Cott. 5464), $16\frac{3}{4}$ " diameter, circa 1690
- 11 100 A triple-reed plate with hammered booge, made by Harton & Sons (Cott. 2177), $9\frac{1}{2}$ " diameter, circa 1860
- 45 101 A William and Mary Triple-Reed Dish, maker's mark BS (Cott. 5464), $14\frac{3}{4}$ " diameter, circa 1690
- 28 102 A Charles II Plain Broad-Rim Dish, maker's mark AR (Cott. No. 5389), $15\frac{1}{4}$ " diameter, circa 1670
near completion
- M 40 103 A Fine Pair of George II Plates with Triple-Reeded Rims and hammered overall, $9\frac{5}{8}$ " diameter, circa 1730
- 33 104 A Late XVIIth Century Narrow Rim Triple-Reeded Plate, maker's 'hallmarks' on rim, indistinct touch on reverse, $8\frac{5}{8}$ " diameter, circa 1690
- 130 105 A Late Stuart Paten with two incised reeds to rim, maker's mark ED struck four times to rim, 6" diameter, late XVIIth Century
- 270 106 An Important Charles II Large Flagon, the lofty double domed cover surmounted by a conical five-knopped finial and fitted twin cusped thumbpiece, the cylindrical drum having ovolo lip and splayed skirt base, elongated double scroll handle, no maker's mark apparent, height to lip $9\frac{1}{2}$ " , height overall 13" , circa 1675
for an identical flagon of this extremely fine and rare type see Cotterell's 'Old Pewter', Pl. XXXVIIb
(see illustration)
- 300 107 A Fine Stuart Large Flagon, the hinged Beefeater cover fitted triple cusped thumbpiece with heart motif, the plain cylindrical drum having bold wide-skirted base, elongated scroll handle, indistinct maker's mark to base, height to lip, $9\frac{3}{4}$ " , height overall $12\frac{1}{4}$ " , diam. of base $7\frac{3}{8}$ " , circa 1650
for a flagon of similar type see Cotterell's 'Old Pewter', Pl. XXXVIIa
(see illustration)
- 108—115
- 110 116 A George II Plate with 'Wriggled Work' Decoration of a stag amid foliage, made by Francis Kayford ? (Cott. No. 5747b), diam. $8\frac{1}{2}$ " , circa 1730
(see illustration)



LOT 106



LOT 107

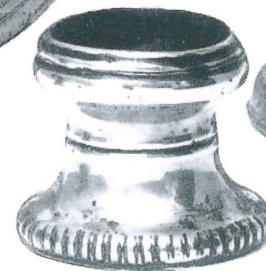
- 6½ 119 A pewter stump end spoon, 6¾", XVIth Century
- Shemwell 18 120 Two pewter stump end spoons, 6¼", 6¼", XVIth Century; a pewter spoon, XVIth Century, part stem missing; a pewter stump end spoon, XVIIth Century, faults
- Hibbs 14 121 A pewter spoon with slipped-in-the-stalk terminal, 6¾", early XVIIth Century; a pewter spoon with rudimentary trifid terminal, 6¾", late XVIIth Century
- 50 122 **Two Fine Baluster Knop Pewter Spoons**, 6¼", 6½", XVIth Century
formerly in the Yeates collection
- 23 123 **A Pewter Spoon with Maidenhead Knop**, 5¾", XVIth Century
- 33 124 Two pewter spoons with hexagonal knops, 6¼", 6½", XVIth and early XVIIth Centuries
- 21 125 **A Pewter Spoon with Bold Acorn Knop**, 6¾", XVIth Century
- 42 126 **A Pewter Spoon with Diamond Point Knop**, 5¾", XVth Century
- 12 127 Two Latten seal top spoons, 5⅞", 5⅞", early XVIIth Century
- 26 128 **A Handsome Latten Spoon with Well Formed Seal Top** and gadroon knop, 7", early XVIIth Century
- M 16 129 Two Latten spoons with rudimentary knopped terminals, 6¼", 6¾", XVIth/XVIIth Centuries
- M 21 130 A Latten spoon with acorn finial, 5⅞", XVIth Century
- 30 131 A Latten spoon with slipped-in-the-stalk stem, 6¾"; a Latten spoon with knop and cone terminal, 7¼", both XVIth Century
- 30 132 Three Latten seal top spoons, 6½", 5¾", 5¾", XVIth/XVIIth Centuries
- 10 133 Two Latten seal top spoons, 6¼", 5¾", XVIth/XVIIth Centuries
- 42 134 A Latten spoon with horse hoof knop, 5¼", a Latten spoon with cloven hoof knop, 5", XVIth/early XVIIth Centuries
- M 32 135 A Latten spoon with unusual wrythen knop, 5¾", a Latten spoon with knop of raspberry form, 6½", XVIth/XVIIth Centuries
- 195 136-145 *Unrested Tappit hen, chopin & mutchkin*
- 30 *Plain Spoon Rack*
- 56 *Spoon Rack with fret decoration*
- POTTERY AND PORCELAIN**
- 146 **A Bloor Derby Porcelain Pot-Pourri Vase and Cover** of classical form with ram's head handles and guilloche piercing, painted in characteristic style with roseheads and scrolling foliate meanders in pastel shades, upon a triangular plinth having gilded enrichments and scrolling supports with lions' masks, 10" high
- 147 **A Vienna Porcelain Circular Dish**, centre reserve panel painted classical scene with Hector, Paris and Helene, within multicoloured borders in pastel shades having tooled and burnished gilded arabesques, 17¼" diameter



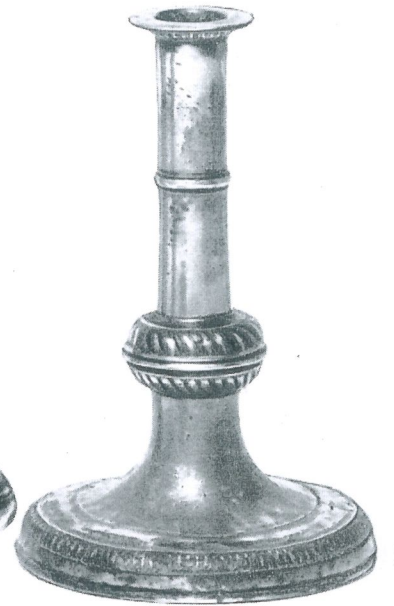
Lot 82



Lot 116



Lot 91



Lot 88