

7303

CHRISTIE'S INTERIORS

29 SEPTEMBER 2009

SOUTH KENSINGTON

Masters & Makers *Oak Furniture, Works of Art and* *Old Master Paintings*

AUCTION DATE

Tuesday 29 September 2009
at 10.30 am

AUCTION NUMBER

In sending written bids or making enquiries,
please use auction number **5927**

VIEWING DATES

Saturday	26 September	10.00 am – 4.00 pm
Sunday	27 September	10.00 am – 4.00 pm
Monday	28 September	9.00 am – 7.30 pm
Tuesday	29 September	9.00 am – 10.30 am (<i>Limited View</i>)



Lot 471 (detail)

OPENING HOURS:

85 Old Brompton Road, London SW7 3LD

Saturday & Sunday

10.00 am – 4.00 pm

Monday

9.00 am – 7.30pm

Tuesday to Friday

9.00 am – 5.00pm

General Enquiries

+44 (0)20 7930 6074



Nic McElhatton
Deputy Chairman,
Head of Interiors



Simon Green
Head of Sale



Mark Stephen
Decorative Objects



Pat Frost
Textiles



Emma Rainbird
European Ceramics



Florence Evans
Old Master Paintings



Freddie de Rougemont
Old Master Paintings

BIDS OFFICE

Tel: +44 (0)20 752 3225

Tel: +44 (0)20 752 3111

Fax: +44 (0)20 7581 1403

SALE ENQUIRIES

masters&makers@christies.com

Tel: +44 (0)20 7752 3212

Fax: +44 (0)20 7752 3186

EMAIL

First initial followed by
last name @christies.com
(e.g. Simon Green =
sgreen@christies.com)

THINKING OF SELLING?

Valuations

Philip Belcher

pbelcher@christies.com

Tel: +44 (0)20 7752 3310

FRONT COVER

Lot 270

These auctions feature

CHRISTIE'S LIVE
Bid live in Christie's salerooms worldwide
register at www.christies.com

GREAT HALL

Until the beginning of the 18th century, a typical 'hall' house would have consisted of a Great Hall, with domestic offices concealed behind a hall screen and withdrawing rooms or solars tucked into turrets. The Great Hall was the centre of all domestic life; entertaining, eating, performances of masques and plays all took part in the hall. The furniture and objects here are all inspired by the great hall look of utilitarian pieces by artist-craftsmen which mostly furnished these huge rooms. Taken out of the Great Hall context such furniture and accoutrements can stand, singly and alone as objects of utility, decoration and fascination to the modern eye.



2 small

94 polight crack, no Denmark mark, collectible but scratched
clean back

95 looks good.

97 Not lid? rim scratched

NSC:

How a collector browses
through an auction catalogue

100 OK.

102 So so.

105 smaller polished & battered

106 Good

108 still some scratches, (on the lid) / Poor lot

110 Good but NOT English

117 O.K.

112 Personally not keen on engraving.

114 Not bad - scratched back.

116 Good

118 awful surfaces

101 quite good.

00 M. 1.

REDISCOVERING PEWTER

There is something handsome and unusual about pewter; it is not just in the common mode. A table set with pewter (unusual, these days) can assume a rustic elegance. There is plenty to choose from as, over the centuries, the British pewter industry produced a huge variety of objects for manor house, cottage inn and church. Some, like big platters and jugs were simply utilitarian. Other pieces of pewter were extremely decorative. Its appeal today lies both in its understated simplicity and in its historical context. Pewter slowly replaced wood and horn during the 16th and 17th centuries, to be replaced in turn in the 18th century by porcelain and pottery. Interestingly, pewter's peak was after the Great Fire of London and the Restoration of the Monarchy when pewter needed to be replaced and became much more decorative. There was also a large trade in recycling old pewter which made new services easier to afford at the time, but sadly means that many earlier examples did not survive. It is rare today to find Elizabethan or earlier pewter, though styles were certainly copied later.





***96 TWO GEORGE III PEWTER SPIRE FLAGONS**

BY THOMAS CARPENTER OF LONDON, CIRCA 1760

Both with a row of hallmarks to rim (O.P. 812) and 'broken-scroll' handles, one with pierced chairback thumbpiece, the other solid chairback thumbpiece

12¼ & 12½ in. (32.5 & 32 cm.) high (2)

£800-1,200 US\$1,200-1,800

€900-1,300

LITERATURE:

One illustrated by Vanessa Brett, *The Phaidon Guide to Pewter*, 1981, p. 57.

875

***97 A WILLIAM AND MARY LIDDED FLAGON**

PERHAPS SCOTTISH, CIRCA 1700

With twin cusp thumbpiece and tapering body with two reeded raised bands, unmarked

8 in. (20 cm.) high overall

£1,000-1,500 US\$1,600-2,300

€1,200-1,700

For a similar see the Worshipful Company of Pewterers of London Supplementary Catalogue, 1979, p.33. fig. 201.

It is interesting to note the similarity between the shape of this flagon with both lidless tavern mugs of the period (see Christies Little collection, May 2007 lots 124-126) and Scottish lavers of generally later date.

2000

97

***94 A GEORGE II PEWTER STRAWBERRY DISH**

BY GEORGE BEESTON OF LONDON, MID 18TH CENTURY

With engraved crest and touch adverso (O.P. 353)

8¼ in. (22 cm.) diameter

A pair of pewter communion bowls by T & H Compton, with multiple reeded rims engraved 'St Philip. CLERKENWELL. Consecrated 1st January 1834. EDWIN HILLS ESQre. Wardens.

W.G. MYLNE ESQre.' touch adverso - 10 in. (25.5 cm.) diameter; and a pair of wavy edged plates by Stynt Duncombe with engraved crests and relief cast decoration to rims - 9½ in. (24 cm.) diameter (5)

£600-1,000 US\$910-1,500

€680-1,100

PROVENANCE:

Strawberry dish Sotheby's London, November 1980.

LITERATURE:

One of the pair of wavy edged plates by Duncombe is illustrated by Vanessa Brett, *The Phaidon guide to Pewter*, 1981, p. 49

A Strawberry dish from the same set is illustrated in the Worshipful Company of Pewterers of London Supplementary Catalogue, 1979 No. 701. p. 82.

1125

2500

***95 A CHARLES II ENGRAVED PEWTER CHARGER**

BY SAMPSON BOURNE I OF WORCESTER, CIRCA 1674

The broad rim with a row of hallmarks and ownership initials 'A.L.' engraved 'SAINT GORGE (sic) FOR ENGLAND 1674.' the well with the Saint on horseback above the dragon, touch adverso (O.P. 5463), the narrow border struck in various places with the name 'HY MORRIS'

16¼ in. (42.5 cm.) diameter

£2,000-3,000 US\$3,100-4,500

€2,300-3,400

PROVENANCE:

Bradshaw Collection, Sotheby's London June 13th, 1977, lot 98

A similar plate by the same maker from the Isher collection, engraved 'THE GIFT IS SMALL, THE LOVE IS ALL 1674' is illustrated in *Pewter at Colonial Williamsburg*, John D. Davis, pp. 48-49 No. 38. The style of the engraving on this dish is unusual if not unique in pewter and the lettering around the border can be compared to brass warming pans of the period





***98 A JAMES I PEWTER 'BUN-LID' FLAGON**
CIRCA 1615

With unusual engraved decoration to back of thumbpiece and both handle terminal and thumbpiece with gadrooning, repair to cover and thumbpiece join
13 1/4 in. (33.5 cm.) high
£3,000-5,000

3250

US\$4,600-7,500
€3,400-5,600

Compare with a James I flagon with relief cast decoration on the thumbpiece, Bonhams, Chester 8th September 2005 lot 134. Although engraved and not cast, the motifs on this example are similar but the angular gadrooning most unusual.



100 A GEORGE III PEWTER DOUBLE VOLUTE GALLON MEASURE
BY THOMAS STEVENS OF LONDON, CIRCA 1750

With touch to top lip (O.P. 4513)
13 in. (33 cm.) high
£2,000-3,000

2500

US\$3,100-4,500
€2,300-3,400

The maker is recorded as making both buds and double volute measures, see The Journal of the Pewter Society, Autumn 2004.



101 A DUTCH PEWTER REMBRANDTKANNE
NIMINGEN, 17TH/EARLY 18TH CENTURY

With makers touch of the initials L.V.W. within a rose and crown on the disc on cover
9 in. (23 cm.) high
£1,500-2,000

NS

US\$2,300-3,000
€1,700-2,200



***99 A WILLIAM AND MARY PEWTER PORRINGER**
BY THE MAKER T.B. CIRCA 1700

With conventional pierced ear, touch under ear (Peal M.P.M. 5466a) and flat base
6 1/4 in. (16 cm.) across ear
And a similar larger porringer, unmarked but with ownership initials EB. to ear - 7 in. (18 cm.) (2)
£800-1,200

NS

US\$1,200-1,800
€900-1,300

LITERATURE:

R.F. Michaelis *English Pewter Porringers*, part IV, Apollo Magazine.
Ian Robinson suggests in the Autumn 1998 Journal of the Pewter Society that T.B. is the mark of Thomas Banks III of Wigan (PS 9601)



***102 TWO ENGLISH PEWTER BUD BALUSTER MEASURES**
LATE 17TH OR EARLY 18TH CENTURY

The quart with indistinct touch and ownership initials 'I.M.' to cover, the pint unmarked
quart 7 1/2 in. (19 cm.) high
£800-1,200

NS

US\$1,200-1,800
€900-1,300



109 ■ AN ENGLISH PAINTED WOOD DOUBLE-SIDED TAVERN SIGN ENTITLED 'SAWYERS'
EARLY 19TH CENTURY

Inscribed 'Finch's Porter & fine ALE.' in a modern wood frame with inscription plaque reading 'SAWYERS. Sign by John Cronne 1768-1821.'

34½ x 39 in. (88 x 99 cm.) overall

£800-1,200

US\$1,200-1,800

€900-1,300



***110 A WRIGGLE-WORK ENGRAVED PEWTER DISH**

DUTCH OR ENGLISH, MID 18TH CENTURY

With a row of hallmarks to rim by the maker MC or MG (O.P.5627) in English style and the ownership initials 'J.V.' and two indistinct touch marks adverso

16 5/8 in. (42.2 cm.) diameter

£600-900

US\$910-1,400

€680-1,000



***111 A PAIR OF WILLIAM AND MARY TRIPLE REEDED RIM PEWTER PLATES**

BY THOMAS FRANCIS, CIRCA 1700

With hallmarks to rim and touch adverso (Peal M.P.M. 5599a) 9½ in. (24 cm.) diameter

And a plate by the maker SF or SP with an unusual hammered well and a row of four hallmarks to rim - 9½ in. (24.5 cm.) (3)

£600-900

US\$910-1,400

€680-1,000



***112 A GEORGE I ENGRAVED PEWTER CHARGER**

BY ROBERT JUPE OF LONDON, EARLY 18TH CENTURY

The rim with an ownership triad and engraved floral design, the reverse with touch marks (O.P.2694)

20¼ in. (51.5 cm.)

£600-1,000

US\$910-1,500

€680-1,100

LITERATURE:

One of the pair of plates is illustrated by Vanessa Brett, *The Phaidon Guide to Pewter*, 1981, p. 48.

The Pewter Society database notes a link between Francis and North America for the same hallmarks are found on some plates with the crowned rose mark L879 (see Laughlin: *Pewter in America, its Makers, and their Marks*) that is associated with pewter made in Boston, Massachusetts. This suggests Francis started his working life in England and then moved to Boston. Records have been found of a Thomas Francis Pewterer in Boston.



103

NS
***103 A SET OF FIFTEEN GEORGE II PEWTER PLATES**
 BY GEORGE STAFFORD OF LONDON, MID 18TH CENTURY
 Each with engraved crest to rim and touch adverso (O.P. 4471)
 9 3/4 in. (25 cm.) diameter (15)
 £1,200-1,800 US\$1,900-2,700
 €1,400-2,000
 A plate with cast wavy edged crested border attributed to Stafford is illustrated in John Davis, *Pewter at Colonial Williamsburg*, No. 140.



106

875
***104 A SET OF EIGHT GEORGE II PEWTER PLATES**
 BY HELLIER PERCHARD OF LONDON, CIRCA 1747
 Each with impressed 'Burrough (sic) of Newbury' ownership stamps to rim, touch and hallmarks adverso (O.P. 3611)
 9 3/4 in. (24.7 cm.) diameter (8)
 £800-1,200 US\$1,200-1,800
 €900-1,300
 A native of Guernsey, Perchard lived and worked in London from 1702-1759. These Borough of Newbury plates were ordered in 1747. For an illustration see Vanessa Brett, *The Phaidon Guide to Pewter*, 1981, p. 48



104

NS
***105 A JERSEY PEWTER MEASURE OF POT CAPACITY**
 BY JOHN DE ST. CROIX, MID 18TH CENTURY
 With touch under cover (O.P. 1360) and two crowned GR verification stamps to top rim. Woolmer collection label No. 47 under foot
 10 3/4 in. (27.3 cm.) high overall
 And a Guernsey pint capacity measure, mid 18th Century, by T. Carter, with three ownership initials, a 'London' stamp and a pair of touches, - 7 1/4 in. (18.2 cm.) high (2)
 £700-1,000 US\$1,100-1,500
 €790-1,100

PROVENANCE:
 The Jersey measure Stanley C. Woolmer Collection.

LITERATURE:
 The Jersey measure:
The Phaidon Guide to Pewter, 1981, p. 67
Pewter of The Channel Islands, 1973, fig. 1, p. 17



107

625
106 A WILLIAM AND MARY TRIPLE REEDED RIM CHARGER
 BY JOHN CAVE OF BANBURY, LATE 17TH CENTURY
 With hallmarks to rim and touch adverso (O.P. 857) and ownership triad to rim
 18 in. (46 cm.) diameter
 £600-900 US\$910-1,400
 €680-1,000
 The Pewter Society Database re-attributes John Cave as working in Banbury and not Bristol, P.S. No. 1591.



105

NS
***107 A PAIR OF PEWTER CHALICES**
 PROBABLY SCOTTISH, CIRCA 1800
 With stepped domed bases and bodies with turned reeded decoration
 8 in. (20 cm.) high
 And a Nuremberg pewter chalice, 18th Century, with town mark on foot rim 7 in. (17.7 cm.) high (3)
 £300-500 US\$460-750
 €340-560



108

1000
***108 A COLLECTION OF FIVE ENGLISH PEWTER DOUBLE VOLUTE MEASURES**
 MID 18TH CENTURY
 Comprising a pint, two half-pints, gill and half-gill, together with two lidless measures
 pint 6 in. (15 cm.) high
 One of the half pints with unusual triad mark to rim of 'B over SM' believed to be Borough of St. Marylebone (7)
 £600-900 US\$910-1,400
 €680-1,000



113 ■ AN ENGLISH PAINTED METAL, PROBABLY ZINC, DOUBLE SIDED TAVERN SIGN ENTITLED 'THE MAN WITH A LOAD OF MISCHIEF'

LATE 18TH OR EARLY 19TH CENTURY

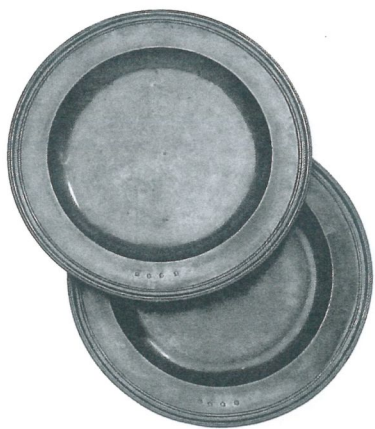
Set in modern wood frame with an inscription plaque reading 'The Man with a Load of Mischief. (Attributed to John Crome 1768-1821)'

42¼ x 32¼ in. (107.2 x 82 cm.) overall

£1,500-2,500

US\$2,300-3,800

€1,700-2,800



114 ■ A PAIR OF WILLIAM AND MARY TRIPLE REEDED RIM DISHES

BY JOHN BARLOW OF LONDON, CIRCA 1700

With hallmarks to rim and touch adverso (O.P.256), one with an ownership triad

16½ in. (42.4 cm.) diameter

£800-1,200

(2)

US\$1,200-1,800

€900-1,300



115 ■ A CHARLES I OAK JOINED STOOL

MID 17TH CENTURY

With figured oak top and plain moulded friezes, on ring-turned legs

£1,500-2,000

US\$2,300-3,000

€1,700-2,200



*116 ■ A GEORGE II WRIGGLE WORK PEWTER PLATE

CIRCA 1740

With single reeded rim and a depiction of a stag and flowers, the reverse stamped 'LONDON' and with indistinct stamp

8½ in. (21.5 cm.) diameter

£800-1,200

US\$1,200-1,800

€900-1,300

The naive wriggled depiction of the stag is probably by the same hand as a plate by William Bartlett of London, sold in The Barkin Collection, Bonhams Chester, 14th May 2009, lot 615.

