

7267

p. 202 (p. 203 missing)

BULLETIN OF THE METROPOLITAN MUSEUM OF ART

combined researches now appear as *The Temple of Hibis in el Khargeh Oasis, Part II: Greek Inscriptions.*

The edicts are of the greatest importance to our knowledge of Roman colonial government and of economic conditions in Egypt during the first century A.D., and an accurate transcription of them will be most welcome to students of this period.

The Temple of Hibis, Part I, by H. E. Winlock is now in preparation and will deal with the historical and architectural aspects of this temple.

AMERICAN PEWTER. The enthusiasm shown by the public for American pewter during the special loan exhibition held early this year in Gallery E 15 has encouraged the Museum to install another display in The American Wing for an indefinite period. Nearly two hundred pieces of marked pewter have been arranged in Gallery I. 6. Mrs. J. Insley Blair has lent her entire collection of ninety-one pieces, and Mrs. Stephen S. Fitz Gerald has supplemented her former special loans with numerous additional examples. The Garvan Collection of Yale University is also well represented here.

In the Room of Recent Accessions this month are also three pieces of American pewter which augment the permanent collection, a tankard and teapot acquired by purchase and a plate by gift.

The tankard (fig. 1)¹ has several pleasing details which complement the simplicity of its neatly proportioned drum, in the scalloped lip of its flat top and the "fish tail" terminus of its handle. Inside the base are the initials F B in a "rope" circle, the mark of Frederick Bassett, a New York pewterer (1740-1800). The tall teapot,² made early in the nineteenth century in Boston, is one of the most unusual and successful of the late pewter forms. The lower half appears to have come from the same mold as the covered sugar bowls by G. Richardson, whose name is stamped in a rectangle on the base of our acquisition. The condition of both pieces is exceptionally good, requiring no restoration and little cleaning to

¹ Acc. no. 30.59. Rogers Fund. H. 7 in.

² Acc. no. 30.05. Rogers Fund. H. 10 1/2 in.

bring back the pristine luster of the metal. The third acquisition is a plate,³ the gift of Mrs. Frederick S. Fish. American pewter plates are monotonously alike except that



FIG. 1. PEWTER TANKARD BY FREDERICK BASSETT (1740-1800)

occasionally the narrow marli lacks the small raised edge. The wide rims and handsome molded borders of seventeenth-century English plates were not copied by native pewterers so far as we know. Our

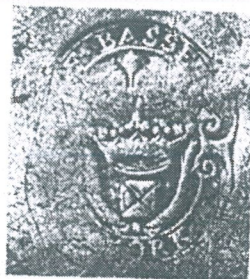


FIG. 2. MAKER'S MARK ATTRIBUTED TO FRANCIS BASSETT (1690-1758)

recent gift is distinguished by a rare mark impressed twice on the back (fig. 2)—probably that of Francis Bassett (1690-1758), uncle of the Frederick Bassett who made the tankard in figure 1. The mark

³ Acc. no. 30.69. W. 9 in.

BULLE

consists of a cartouche, F. Bassett, and below a fleur-de-lis flanked cross, tied palms, and

LIST OF ACCESSIONS and loans to July 1, 1939, are listed:

GREEK AND ROMAN Ceramics, Greek, Etruscan, *Mary and Emily Cross* (1). Coins, Greek, *Gift from* change (1). Gems, Greek, *Loan from* Metalwork, Greek, *Part*

NEAR EASTERN Metalwork, Iranian, *P. Miscellaneous* (Weaving) (1).

RENAISSANCE AND MODERN Ceramics, English, *Benjamin Cloyd* (1). Costume Accessories, *from Finley J. Shepard* Laces, Belgian, French Sculpture, American, *Clewis, Jr.* (1).

Through October 29

Through August 27
Beginning September
Through October

Through October

Through October

Through September 1

Beginning September