

7210

# PEWTER PIECES

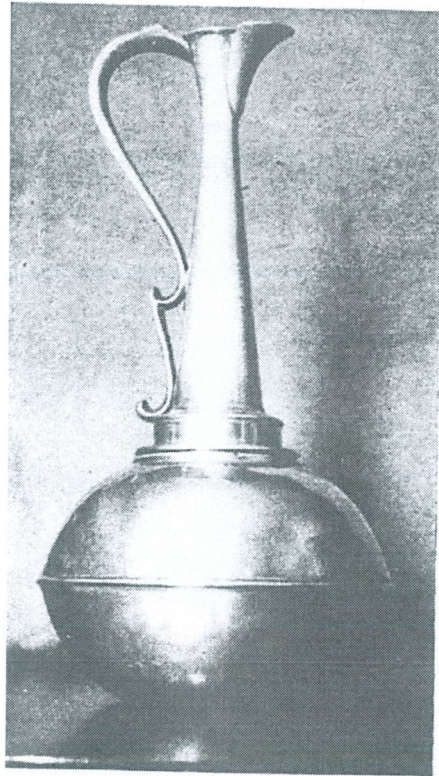
*In an English Collection*

*with notes by the owner*

ROLAND J. A. SHELLEY

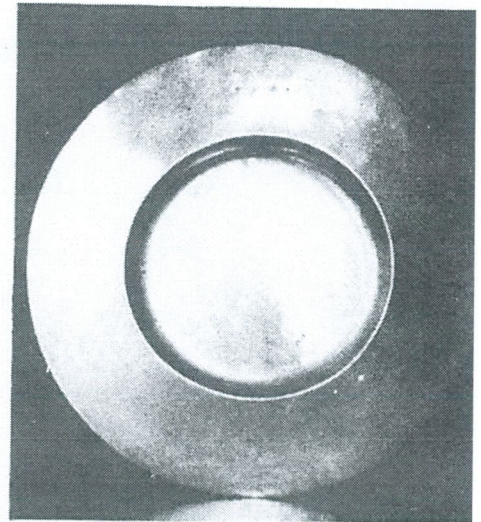
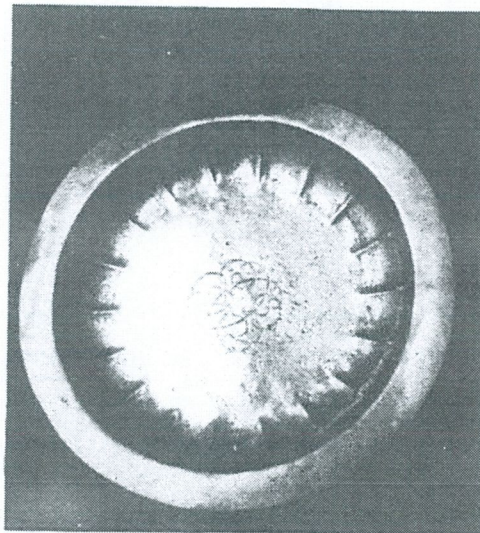


BEER JUGS (English, c. 1790). The rotund example on the right carries an inscription on the drum *Thomas Moon, Crown Inn, Gloster Road*, referring to a dockside district in Bristol.



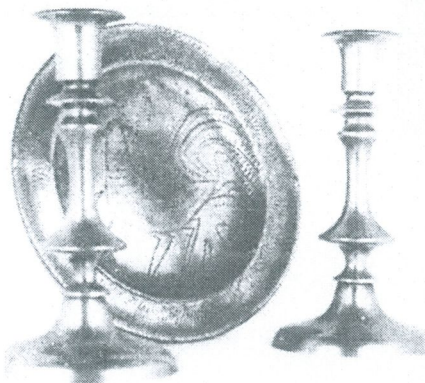
Left, WINE EWER (English, early nineteenth century). Probably made by Thomas Alderson of London (c. 1790-1825). Height, 20 inches.

Below, FLUTED DISH OR BOWL with plain rim (English, c. 1720). Illegible "hall marks" on back. Engraved reverse cipher *EC* on front. Such bowls are sometimes called strawberry bowls and are reputed to have come into fashion after Charles II developed a taste for strawberries while in France. Diameter, 12 inches.

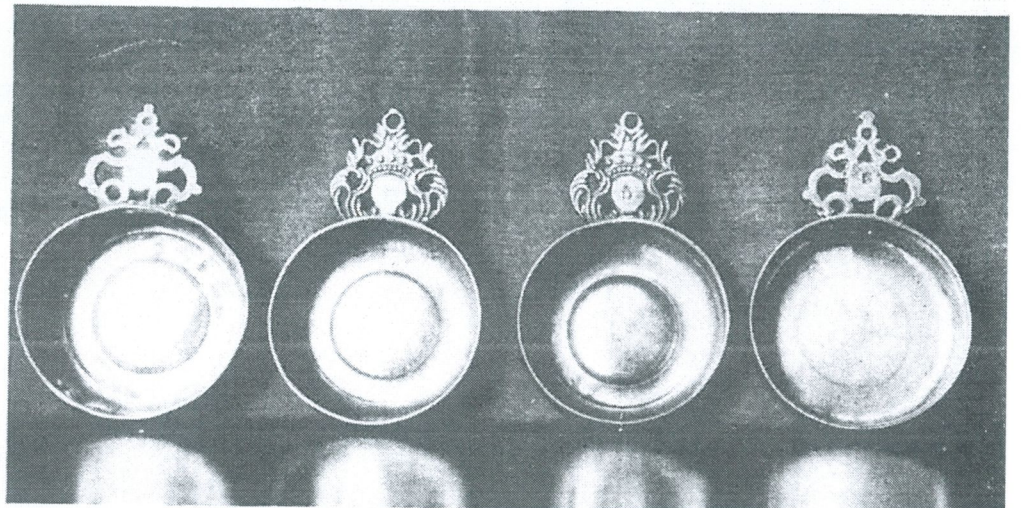


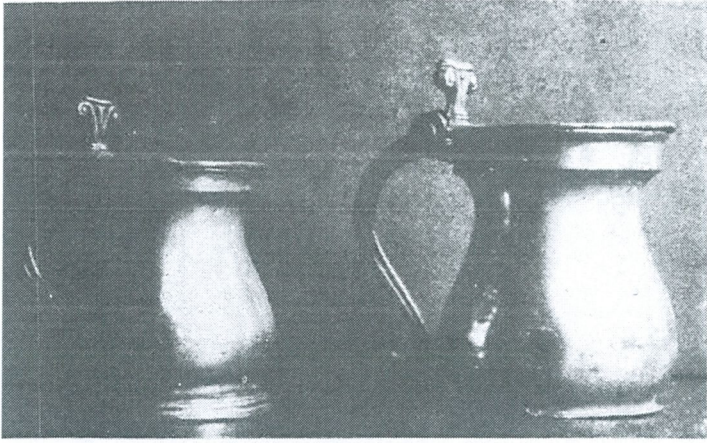
BROAD-RIMMED DISH (English, c. 1657). A fine example of an early type. The maker's mark with initials *RI*, date 1657, and crown over crook appear on the London touch plate of the Pewterer Guild, and is tentatively identified by Cotterell as that of Robert Jones. Other marks, on rim, are indistinguishable. Diameter, 18 inches.

Below, PAIR of late Georgian candlesticks (English, c. 1775-1820). Representing one of the numerous baluster-stemmed forms of the period. Height, 8 inches. PLATE (English, c. 1720) by James Hitchman of London. Decorated with engraved "wrigglework." Diameter, 8 inches.



Below, PORRINGERS (English, c. 1680-1720). All bearing initials of unidentified makers. The two center items, it will be noted, are a pair. Both have crown handles and carry the initial *D*. Matching examples of this kind are not often found in pewter.

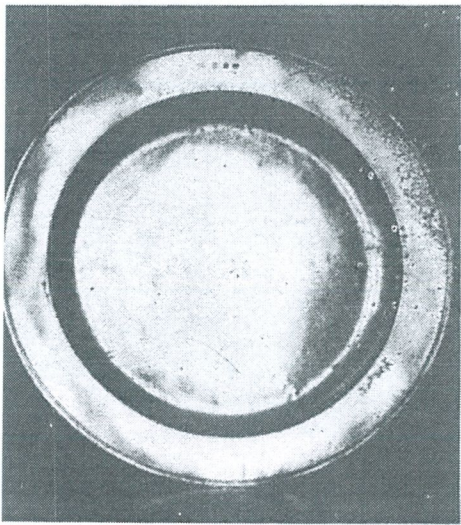




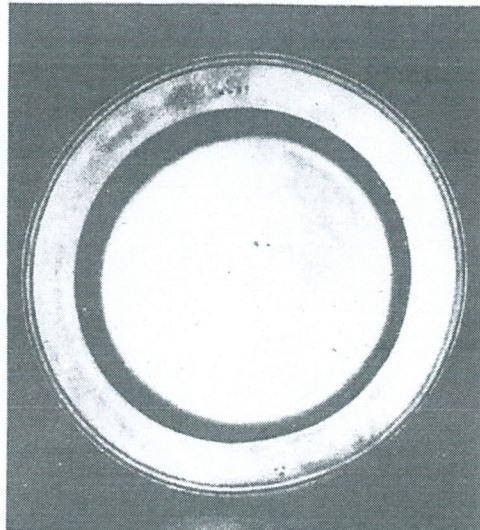
HALF-PINT AND PINT LIDDED MEASURES (c. 1750-1800). Called "double-lute" type because of the shape of the thumbpiece. Believed to be Scottish the basis of the squat shape of the body.



LIDDED MEASURES (Scottish, early 1800's). Called "embryo-shell" because of shape of thumbpiece. Quart size and one at far left by Robert Whyte of Edinburgh (c. 1810). Extreme right, by Adam Ramage, Edinburgh (c. 1825).



Below, STUART DISH (English, c. 1675). With triple-reeded rim. Made by Lawrence Dyer of London. Diameter, 22½ inches.



DISH (English, c. 1690-1710). Of reeded-edge type, slightly later in date than the example at right. By Richard Webb of London. This dish was lost by enemy action in the war. Diameter, 21 inches.



PINT MEASURE (English, sixteenth century). So-called "wedge" type. The excise mark of Henry VIII is struck on the top of the lid, and the "merchant's mark" on the lip. This measure is a very rare early piece.

Below, CHALICES AND CUP. Far left and right, Scottish, engraved *Laigh Kirk/Ayr, 1794*. Inner left and right, Irish, with cylindrical bowls (c. 1780). Center left, English, inscribed *A gift to the Church of Christ's meeting in Hog Lane, Woolwich, 1758*. Center right, English two-handled cup (c. 1800); height, 4¼ inches.



WINE CAN (Swiss, mid-eighteenth century). No maker's marks; date 1750 impressed on handle. The cover finial is in the shape of a Negro head. Height, 13½ inches.

