

GGC

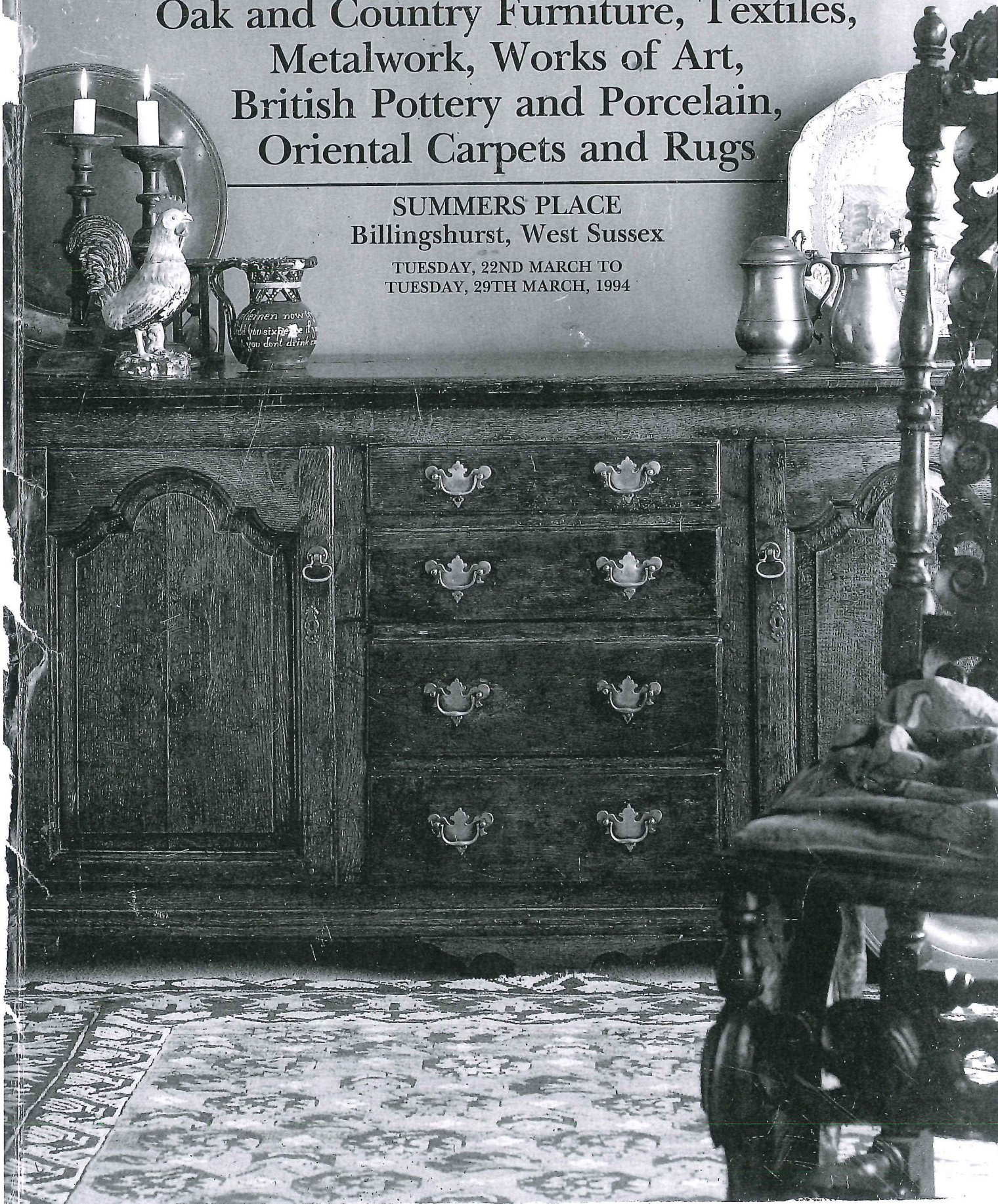
SOTHEBY'S

FOUNDED 1744

Oak and Country Furniture, Textiles,
Metalwork, Works of Art,
British Pottery and Porcelain,
Oriental Carpets and Rugs

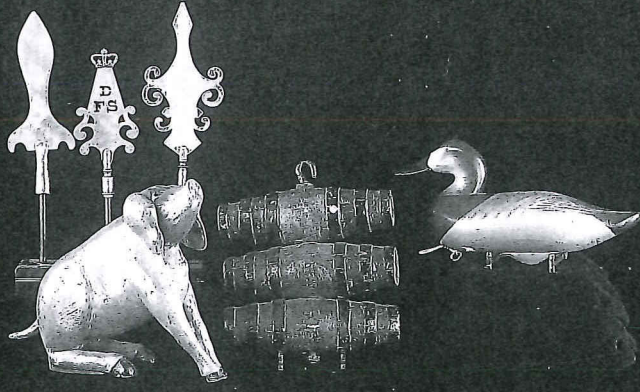
SUMMERS PLACE
Billingshurst, West Sussex

TUESDAY, 22ND MARCH TO
TUESDAY, 29TH MARCH, 1994





400



423
372

374

373



401



402



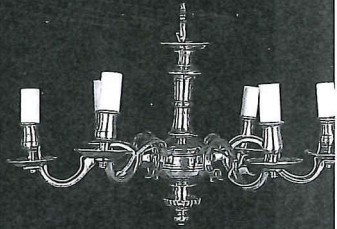
421



426



427



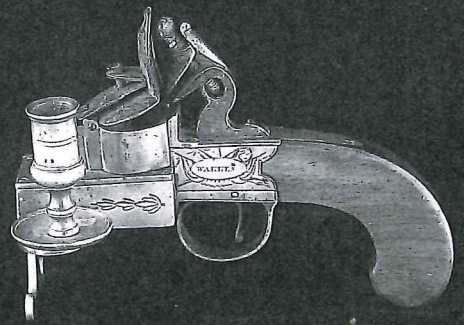
431



455

454

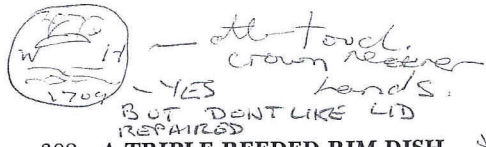
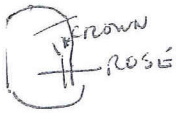
453



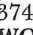
419



473

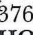


(For colour illustration see page 23)

374  **A CARVED AND PAINTED WOOD TAVERN SIGN, late 18th Century**, in the form of three barrels with simulated iron banding, on top of each other connected by an iron rod, 33cm.; 13in £200-300

375 **AN ASH AND ELM BABY WALKER, circa 1800**, the oval ring top initialled S.B. with brass nails, on three legs joined by stretchers, 61cm.; 24in £100-150

(For colour illustration see page 23)

376  **A PAINTED WOOD WEATHER HOUSE, Victorian circa 1840**, painted as a red-brick building with a tiled roof and bowed railed front with two arches from which emerge a pair of figures, 32cm.; 13in £400-600

377 **A WOODEN FISH SHOP SIGN, circa 1900/20**, painted and carved in shallow relief, 70cm.; 2ft 3 1/2in £100-200

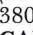
378 **A PAINTED WOOD TAVERN SIGN, 19th Century**, depicting the prize bull Comet, inscribed 'SOLD IN 1810 for ONE THOUSAND GUINEAS', painted on four planks, restored, 117 by 122cm.; 3ft 10in by 4ft £500-800

Provenance by repute: This lot is the product of an anonymous sign painted for the Comet Hotel, Croft, Nr Darlington, and then removed to the home of a local farmer. It is illustrated in *A North Country Album* by George A Fothergill, 1901. Comet was one of the most famous bulls of its day and was painted by Thomas Weaver.

379 **AN ENGRAVED COW HORN, circa 1863**, engraved with lurchers and a hare in a landscape and inscribed 'The Horn of a prize Ox, fed by the Earl of Derby, Exhibited at the Liverpool cattle show 1863' and with a poem 'The Horn of England', 34cm.; 13 1/2in £350-450

BRITISH AND CONTINENTAL PEWTER

(For colour illustration see front cover)

380  **TWO SIMILAR CANDLESTICKS, German late 17th Century**, each with domed wide base and cylindrical knopped and flanged stem supporting wide drip pans, prickets missing, one with touch of M.B. to top rim, the taller 34cm.; 13 1/2in £500-800
See front cover illustration

381 **A SWISS BROAD-RIMMED PLATE BY OSWALD KEISER, late 17th Century**, with ring turned perimeter and touch to front rim, 22cm.; 8 3/4in £200-300

£276

382 **A TRIPLE REEDED RIM DISH, circa 1690**, indistinct touch adverso, 'hallmarks' of a row of four cockerels and ownership initials to rim, 42cm.; 16 1/2in NOT REPLY £150-200

383 **A SET OF SIX PLATES, English late 18th Century**, each with crowned rose and London touch marks, 23.5cm.; 9 1/4in - WHY DENT LIKE THESE £180-250

384 **A BABIES FEEDING BOTTLE, English circa 1800**, of pear shaped form with screw lid, 15cm.; 6in £150-200

385 **A FRENCH DOUBLE LITRE LIDDED MEASURE, 19th Century**, of straight sided form with shell thumbpiece and flat top, 26cm.; 10 1/4in; and a lidded litre measure by Humbert Napoleon, 20cm.; 8in (2) not £161 £150-200

386 **A DOMED LID TANKARD, the cylindrical body with raised girdle and stepped foot, scroll handle with spade terminal and scroll thumbpiece, touch of maker William Hitchins (O.P.2337 & 2339) in base, 17.5cm.; 6 3/4in £300-500**

387 **A SET OF TWELVE PLATES, probably Dutch 20th Century**, each with shield engraved beaded rims, the backs stamps 'TIN' & MAASE, 26.5cm.; 10 1/2in no £230 £200-300

388 **A LIDDED TANKARD BY THE MAKER I.A.G., German 18th Century**, the tapering plain drum with flat lid with raised boss, ridged scroll thumbpiece and angel mask relief to handle join, 21cm.; 8 1/4in not me £368 £150-200

*389 **A 'TULIP' SHAPED PINT TAVERN MUG, late 18th Century**, engraved with a tulip and ownership initials, the handle of double scroll form, possibly Ingram & Hunt of Bewdley; a similar tankard, no maker's marks, both 12cm.; 4 3/4in; three quart tavern mugs, one with side spout and 'tuck-in' foot and attention handle by Edgar & Sons, 15cm.; 6in, another by Yates & Birch with double scroll handle, and the third of straight sided tapering form, late 18th Century (5) N/S last sale N/S £150-200

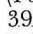
*390 **A TREASURY INKSTAND, circa 1800/1820**, the double hinged flap stamped by the maker T.H. on half ball feet; and a half pint tavern mug by the same maker of straight sided tapering form with diamond attention handle terminal; a salt on three legs, 18th Century; a Scottish deer horn foot and pewter mounted snuff box by Durie and two double measures, one flattened, (6) N/S WAS IN. last sale £100-150 with 2 bottles now. £140-180

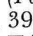
*391 **THREE STRAIGHT SIDED TAPERING TAVERN MUGS, late 18th/early 19th Century**, comprising a quart with attention handle terminal; a pint with side spout, crowned C.C. stamp and V.R. marks; a half pint with row of indistinct hallmarks and attention handle terminal; a quart tavern mug, late 18th Century, of straight sided tapering form with double scroll handle with W.R. stamp and ownership inscription; and a spouted pint mug by Richard Yates, circa 1800 (5) N/S last sale N/S £200-300

*392 **A PINT TAVERN MUG BY RANDOLPH MORING, late 18th Century**, the straight sided tapering body with W.R. stamp and inscribed 'J Denyer Rockingham Arms Newington'; a similar half pint with shield inscription; three half pint tavern mugs, late 18th/early 19th Century, one by Morgan of Bristol, one by Ingram & Hunt of Bewdley with ball terminal and another similar with town stamp and attention terminal; a quart tavern mug by Thomas Abbott, circa 1800 the straight sided tapering body with a single raised girdle and tongued handle, and a similar pint mug (7) N/S last sale N/S £250-350

*393 **THREE BULBOUS SALTS, late 18th Century**, two with beaded rims and a third smaller, the largest 8cm.; 3in diameter; two similar half pint footed cups, circa 1820, one with ball handle and the other double scroll handle; a child's mug probably late 18th Century, of straight sided tapering form, 6cm.; 2 1/2in (6) N/S last sale N/S £100-150

*394 **AN OVAL TOBACCO JAR AND COVER BY RICHARD PITT, circa 1780**, with beaded rims and button finial, 13cm.; 5in - £103 sale £100-150
For a related example by the same maker see Cotterell, 'Old Pewter' pl LXXVI a

(For colour illustration see front cover)
395  **A DOUBLE VOLUTE QUART BALUSTER MEASURE, circa 1780**, the flat cover with engraved circles and trefoil attachment to thumbpiece, 19cm.; 7 1/2in N/S last sale £299 £200-300

(For colour illustration see front cover)
*396  **A QUART LIDDED 'TULIP' TANKARD, circa 1780**, possibly Bristol, touch of R.B. in base, with domed cover and open chairback thumbpiece and double scroll handle, 19cm.; 7 1/2in - N/S last sale £276 £200-300

397 **A PAIR OF CHALICES, circa 1765**, each with tapering drum with a raised girdle, on knopped stem and domed turned circular base, 20cm.; 7 3/4in £250-350

For a related pair see Cotterell, 'Old Pewter' plate XXX b
N/S last sale £276

* Allen Bright 17 421st.
Fleur-de-Lys
1700

* H S 179
5687 c 179
or
1715 just

* 398 A LIDDED ALE JUG, late 18th Century, the unusually bulbous body with open chaiback thumbpiece and domed cover and front spout with a grill, 19cm.; 7 1/2 in N/S ~~15~~ £150-250
399 A BULBOUS PEAR SHAPED JUG, North French or Flemish, early 19th Century, with front spout, partly domed cover and erect thumbpiece cast with a relief mask, 37cm.; 14 1/2 in £391 £350-450

408 THREE DISHES, English mid 18th Century, one with plain rim by the maker J. Browne (O.P.639), another similar with indistinct marks and a single-reeded rim dish, all 42cm.; 16 1/2 in £264 quite nice £180-250

418 TWO BELL METAL TRAVELLING CHALICES, Scottish late 18th Century, each with cup which unscrews from knopped stem and circular base, the taller 10cm.; 4in £120-180

(For colour illustration see page 23)
400 A DOUBLE-VOLUTE BALUSTER MEASURE OF GALLON CAPACITY, circa 1740, of usual form with fleur-de-lys join between flat lid and thumbpiece, shield handle terminal, maker's touch of John Fasson (O.P.1635), 33cm.; 13in N/S £800-1,200

409 TWO PLAIN RIM DISHES, English 18th Century, indistinct marks, one with split rim, 34cm.; 13 1/2 in; a wavy rimmed plate, 27.5cm.; 10 3/4 in; and two hot-water plates, (5) £138 £150-200

(For colour illustration see page 23)
419 A BRASS AND WALNUT TINDER PISTOL, late 18th Century, the engraved brass body inscribed 'WALLIS', supporting steel flint mechanism and brass candle holder, 16.5cm.; 6 1/2 in long £350-450

(For colour illustration see page 23)
401 AN OCTAGONAL BASE CANDLESTICK, Late 17th Century Design, the ribbed stem with octagonal scone and drip tray on reeded octagonal base, 16cm.; 6 1/4 in £1035 £1,000-1,200

410 SIX ASSORTED PLATES, 18th/early 19th Century, including one by Henry Appleton (O.P.98), one by Compton and one by the maker H.S. (O.P.5681), the largest 25cm.; 9 3/4 in; and a set of five reproduction plates, 23cm.; 9in (11) £241 £150-200

419A A BRASS AND PAINTED METAL WOOD WINDER, 19th Century, the enamel gauge inscribed 'J. Nesbitt, late Walker, maker 42 Market Street, Manchester,' the rectangular mahogany base with a trade label 'A. Williamson & Co, Firth Street, Huddersfield', 70cm.; 27 1/2 in. £300-500

(For colour illustration see page 23)
402 A RARE TRUMPET BASE CANDLESTICK, English circa 1650/60, with domed base and mid drip-pan, wriggle-work decoration to both base and drip-pan, touch of the maker T.C. to collar (M.P.M.5532b), 13cm.; 5 1/4 in £3,000-4,000
Provenance: A. H. Isher sale, Bruton Knowles 1976. For a related example see the Worshipful Company catalogue of Pewterware 1979 page 78 plate 604

411 A COLLECTION OF TAVERN MUGS, 19th Century, including two quart, one pint, four half-pint, various styles and makers, a pair of footed cups, circa 1840, 10cm.; 4in; and a Britannia metal tureen cover, (10) N/S £150-200

420 A BRASS ALMS DISH, German 18th Century, embossed with a star and rosettes in a punched border, 35.5cm.; 14in £150-200

403 FOUR ASSORTED DISHES, English 18th Century, by the makers William Cooke, Samuel Smith, Allen Bright and Stynt Duncombe, the first three with single reeded rims the latter with plain rim, 42 to 37.5cm.; 16 1/2 to 14 3/4 in £310 £180-220

412 A TRIPLE REEDED RIM CHARGER BY JOHN FRENCH, circa 1690, 'hallmarks' and ownership triad to rim and indistinct touch adverso, (O.P.5436 & 5593A), 46.5cm.; 18 1/2 in £253 no - not as nice as mine

(For colour illustration see page 23)
421 A GEORGIAN BRASS COFFEE POT BY THE MAKER A.C. mid 18th Century, the tapering body on 'tuck-in' foot engraved at top and bottom with flowers in a rococo cartouche and with 'pseudo hallmarks', surmounted by a domed 'bun' cover, with fluted spout and ebonised wood handle, finial missing, traces of silvering, 21cm.; 8 1/4 in £1,000-1,500

404 A SINGLE REEDED RIM CHARGER, English mid 18th Century, no apparent marks, 45.5cm.; 17 3/4 in; a dish with ownership initials and date 1766, and another with deep well, both 42cm.; 16 1/2 in B IT POORLY £150-200

413 MISCELLANEOUS PEWTER, 18th/19th Century, including a dish by Aquila Dackombe circa 1750, 37cm.; 14 1/2 in; three Continental plates, a pair of Continental twin eared porringers circa 1900, and nine assorted tavern mugs and measures, (15) N/S £140-180

Literature: for related examples see Gentle & Field 'English Domestic Brass' plate 211 and Sotheby's Sussex June 22 1993 the Robert Holland Martin Collection lots 645 & 646.

405 A COLLECTION OF SEVEN PLATES, English and Continental 18th Century, including a pair by Thomas Ridding, 24cm.; 9 1/2 in; others by Duncombe and other makers, and a hot plate, circa 1800, (8) £149 £150-200

414 A COLLECTION OF TWENTY TWO LIDLESS POT-BELLIED MEASURES, Victorian, of usual baluster form including three pint, five half-pint and the rest smaller, (22) £276 £250-300

422 A DUTCH BRASS LANTERN, 19th Century, of tapering hexagonal form with domed pierced cover and ring top, 58cm.; 23in £200-300

406 A PAIR OF SINGLE-REEDED RIM DISHES BY ROBERT SADLER, mid 18th Century, 38cm.; 15in; another similar dish and another circa 1700, 33cm.; 13in (4) - no - Peal's £180-220

415 PEWTER REFERENCE BOOKS COMPRISING: Cotterell: 'Old Pewter', Batsford, reprint 1964; Peal: 'More Pewter Marks' 1976, and 1977 Addenda, (3) £86 £50-80

(For colour illustration see page 23)
423 SIX BRASS FRIENDLY SOCIETY STAFF-HEADS, 19th Century, including five of spear form, one crowned with three pierced initials, 26cm.; 10in; one inscribed W.Cox, 26cm.; 10in; one of baluster form, and the base of a further, (7) part illustrated £250-350

407 A TRIPLE REEDED RIM CHARGER, circa 1680, the rim with hallmarks of the maker R.B., 46cm.; 18 1/4 in £218 £120-180

416 MISCELLANEOUS PEWTER BOOKS, including, Michaelis: 'British Pewter', 1969; Hatcher & Barker: 'A History of British Pewter', 1974; Homer & Hall: 'Provincial Pewterers' 1985, and nine further (12) £69 £50-80

424 MISCELLANEOUS METALWORK, comprising a brass 'hogscraper' candlestick with side eject, 18th Century, 18cm.; 7in; a painted tin chamberstick with shade, 21cm.; 8in; a pewter twin flap rectangular standish; two pewter plates and a tinplate hanging oil lamp, (6) £150-250

BRASS & COPPER

417 MISCELLANEOUS BRASS AND METALWARE BOOKS, including, Michaelis: 'Old Domestic Base-Metal Candlesticks'; Gentle & Field: 'English Domestic Brass'; H.R. d'Allemagne: 'Decorative Antique Ironwork'; Rachael Field: 'Irons in the Fire'; Mentmore vol 2, Works of Art and Silver, Sotheby Parke Bernet, May 1977 and five further (10) £60-100

(For colour illustration see page 22)
425 A PAIR OF BRASS BELL BASED CANDLESTICKS, Continental 18th Century, each with domed base and ball knopped stem rising to wide drip pan and moulded nozzle with ejection holes, one initialled and dated 1604, 24cm.; 9 1/2 in £1,000-2,000

* 1699 SWAN TR

1500? BICKLE

S O T H E B Y ' S
FOUNDED 1744

SUMMERS PLACE, BILLINGSHURST, WEST SUSSEX RH14 9AD - (0403) 783933

SALE RESULTS

STERLING =

£1.00 = .172

FF

OAK & COUNTRY FURNITURE, TEXTILES, METALWORK, AND WORKS

SF

22 MAR 94

DM

(SALE NUMBER BH4817)

SALE STATUS: CLS

LIRE

YEN

1. THE FOLLOWING LOTS WERE SOLD AT THE PRICES STATED.
2. LOT NUMBERS WHICH ARE OMITTED REPRESENT ITEMS WHICH WERE WITHDRAWN, PASSED, OR UNSOLD AS OF THE PUBLICATION OF THIS LIST.
3. PRICES INCLUDE THE BUYER PREMIUM.

LOT	STERLING	LOT	STERLING	LOT	STERLING
0002	1,495	0042	1,437	0079	1,150
0003	6,325	0043	552	0080	920
0004	2,070	0044	517	0081	667
0005	920	0045	632	0082	1,495
0006	483	0046	368	0083	575
0007	1,495	0047	172	0084	897
0008	437	0048	402	0085	2,300
0009	5,290	0049	253	0086	782
0010	805	0050	3,335	0087	517
0011	2,070	0051	1,725	0088	862
0012	2,990	0052	713	0089	1,610
0013	402	0053	598	0090	1,782
0014	368	0053A	402	0091	437
0015	552	0054	345	0092	414
0017	713	0055	8,050	0093	690
0018	402	0055A	287	0094	920
0019	1,092	0056	828	0095	713
0020	322	0057	517	0096	598
0021	345	0058	828	0097	1,150
0022	287	0059	690	0098	287
0023	655	0061	322	0099	1,380
0024	483	0062	598	0100	828
0026	402	0063	253	0102	632
0027	3,220	0064	414	0103	517
0028	414	0065	1,667	0104	517
0029	1,437	0066	805	0105	517
0031	9,775	0067	437	0106	517
0032	575	0068	402	0107	402
0033	1,380	0069	1,495	0108	632
0034	598	0071	287	0109	1,012
0035	1,610	0072	920	0110	1,495
0037	402	0073	782	0111	402
0038	1,035	0074	1,840	0112	920
0039	1,955	0075	621	0113	207
0040	287	0076	1,265	0114	1,897
0041	322	0078	1,667	0115	1,092

NOT RESPONSIBLE FOR TYPOGRAPHICAL ERRORS OR OMISSIONS.

PUBLICATION: 03/23/94

S O T H E B Y ' S
FOUNDED 1744

SUMMERS PLACE, BILLINGSHURST, WEST SUSSEX RH14 9AD - (0403) 783933

SALE RESULTS	STERLING =	
	£1.00 = .172	FF
OAK & COUNTRY FURNITURE, TEXTILES, METALWORK, AND WORKS		SF
		DM
22 MAR 94		LIRE
(SALE NUMBER BH4817) SALE STATUS: CLS		YEN

1. THE FOLLOWING LOTS WERE SOLD AT THE PRICES STATED.
2. LOT NUMBERS WHICH ARE OMITTED REPRESENT ITEMS WHICH WERE WITHDRAWN, PASSED, OR UNSOLD AS OF THE PUBLICATION OF THIS LIST.
3. PRICES INCLUDE THE BUYER PREMIUM.

LOT	STERLING	LOT	STERLING	LOT	STERLING
0117	517	0159	2,645	0199	207
0118	115	0160	7,130	0202	195
0119	1,380	0161	3,680	0203	460
0120	1,897	0162	3,795	0204	322
0121	598	0163	977	0205	402
0122	4,600	0164	575	0207	207
0123	1,380	0166	402	0208	345
0125	402	0167	1,092	0209	253
0126	977	0168	345	0210	437
0127	517	0169	1,437	0211	1,495
0128	414	0170	943	0213	287
0130	632	0171	1,955	0214	230
0132	1,437	0172	828	0216	517
0133	207	0173	920	0217	713
0134	2,645	0174	460	0218	632
0135	287	0175	368	0220	1,840
0136	483	0175A	207	0221	3,450
0137	12,075	0176	713	0222	86
0138	1,150	0177	368	0223	115
0139	1,725	0178	3,105	0224	69
0140	897	0179	402	0226	69
0141	1,207	0180	1,058	0227	92
0143	517	0181	828	0228	920
0144	4,025	0182	1,092	0229	345
0145	736	0183	5,750	0230	977
0146	287	0186	1,207	0232	483
0148	575	0187	437	0233	575
0150	517	0189	402	0234	747
0151	218	0190	552	0235	977
0152	1,150	0191	402	0236	1,610
0153	437	0193	920	0237	667
0154	1,380	0194	172	0238	2,530
0155	690	0195	1,725	0239	345
0156	230	0196	460	0241	126
0157	402	0197A	299	0242	1,380
0158	2,990	0198	1,265	0243	172

S O T H E B Y ' S
FOUNDED 1744

SUMMERS PLACE, BILLINGSHURST, WEST SUSSEX RH14 9AD - (0403) 783933

SALE RESULTS

STERLING =

£1.00 = .172

FF

OAK & COUNTRY FURNITURE, TEXTILES, METALWORK, AND WORKS

SF

DM

22 MAR 94

LIRE

(SALE NUMBER BH4817)

SALE STATUS: CLS

YEN

1. THE FOLLOWING LOTS WERE SOLD AT THE PRICES STATED.
2. LOT NUMBERS WHICH ARE OMITTED REPRESENT ITEMS WHICH WERE WITHDRAWN, PASSED, OR UNSOLD AS OF THE PUBLICATION OF THIS LIST.
3. PRICES INCLUDE THE BUYER PREMIUM.

LOT	STERLING	LOT	STERLING	LOT	STERLING
0244	207	0343	161	0387	230
0246	862	0345	506	0388	368
0301	115	0348	414	0394	103
0302	805	0349	172	0395	299
0303	506	0350	299	0396	276
0304	322	0351	368	0397	276
0305	161	0352	713	0399	391
0306	264	0353	356	0401	1,035
0307	368	0354	184	0403	310
0308	253	0355	483	0404	287
0309	1,035	0356	437	0405	149
0311	161	0357	483	0406	264
0312	333	0358	437	0407	218
0313	103	0360	241	0408	264
0314	828	0361	747	0409	138
0319	230	0362	2,415	0410	241
0320	345	0363	115	0412	253
0320A	109	0364	253	0414	276
0321	299	0365	218	0415	86
0322	103	0367	1,207	0416	69
0323	667	0368	368	0417	172
0324	437	0369	322	0418	172
0325	207	0370	782	0419	724
0326	276	0372	149	0421	3,910
0326A	138	0374	414	0422	195
0329	575	0375	299	0423	287
0330	230	0376	621	0424	172
0332	1,127	0377	184	0426	632
0333	368	0378	483	0427	368
0334	575	0380	437	0428	598
0336	115	0381	276	0430	345
0337	115	0382	264	0432	230
0338	195	0383	264	0433	414
0339	138	0384	264	0435	253
0341	287	0385	161	0436	253
0342	195	0386	207	0438	805

NOT RESPONSIBLE FOR TYPOGRAPHICAL ERRORS OR OMISSIONS.

PUBLICATION: 03/23/94

S O T H E B Y ' S
FOUNDED 1744

SUMMERS PLACE, BILLINGSHURST, WEST SUSSEX RH14 9AD - (0403) 783933

SALE RESULTS

STERLING =

£1.00 = .172

FF

OAK & COUNTRY FURNITURE, TEXTILES, METALWORK, AND WORKS

SF

DM

22 MAR 94

LIRE

(SALE NUMBER BH4817)

SALE STATUS: CLS

YEN

1. THE FOLLOWING LOTS WERE SOLD AT THE PRICES STATED.
2. LOT NUMBERS WHICH ARE OMITTED REPRESENT ITEMS WHICH WERE WITHDRAWN, PASSED, OR UNSOLD AS OF THE PUBLICATION OF THIS LIST.
3. PRICES INCLUDE THE BUYER PREMIUM.

LOT	STERLING	LOT	STERLING	LOT	STERLING
0440	1,150				
0441	126				
0442	276				
0443	437				
0444	368				
0445	690				
0447	460				
0448	437				
0449	207				
0452	862				
0454	1,058				
0455A	575				
0456	414				
0457	218				
0461	207				
0462	575				
0465	57				
0466	230				
0468	264				
0470	460				
0472	264				
0473	1,012				
0474	195				
0474A	195				
0476	345				
0477	322				
0478	345				
0479	201				
0480	287				
0482	184				
0483	552				
0484	1,058				
0485	575				

NOT RESPONSIBLE FOR TYPOGRAPHICAL ERRORS OR OMISSIONS.

PUBLICATION: 03/23/94