

GF2

# Oak, Country Furniture, Folk Art, Works of Art and Sculpture

TUESDAY 1 MARCH 2005

## AUCTION

Tuesday 1 March 2005  
at 10.30 pm Lots 1-335

85 Old Brompton Road  
London SW7 3LD

## VIEWING

Saturday 26 February 10.00 am - 4.00 pm

Sunday 27 February 10.00 am - 4.00 pm

Monday 28 February 9.00 am - 7.30 pm

Tuesday 1 March 9.00 am - 10.30 am

## AUCTION CODE AND NUMBER

In sending absentee bids or making enquiries,  
this sale should be referred to as

FRN-5753

## STORAGE AND COLLECTION

Please refer to the important notice on page 66 Please note that Cadogan Tate's opening hours are Monday to Friday 9am to 5pm, and purchases transferred to their warehouse are not available for collection at weekends.

## SPECIALISTS

Simon Green (Furniture)

Tel: +44 (0)20 7389 2761

Mark Stephen (Works of Art)

Tel: +44 (0)20 7389 2763

Consultants

Victor Chinnery, Dr. B. Cotton

ADMINISTRATOR

Gaylean Davies (Decorative Objects)

Tel: +44 (0)20 7389 2768

Fax: +44 (0)20 7720 3589

Sophie Nutt (Furniture)

Tel: +44 (0)20 7389 2236

Fax: +44 (0)20 7720 3589

BUSINESS MANAGER

Tara Rastrick

Tel: +44 (0)20 7389 2193

Fax: +44 (0)20 7389 2794

## EMAIL

First initial followed by last name @christies.com

(eg. Simon Green = sgreen@christies.com)

For general enquiries about this auction email  
should be addressed to the auction administrator

Front cover: Lot 86

Back cover: Lot 263

## SERVICES

### ABSENTEE BIDS

Tel: +44 (0)20 7752 3225

Fax: +44 (0)20 7581 1403

### AUCTION RESULTS

UK: +44 (0)20 7627 2707

USA: +1 212 703 8080

christies.com

### TELEPHONE BIDS

Tel: +44 (0)20 7752 3111

Fax: +44 (0)20 7591 0987

### OPEN LINE

Is available for this sale (UK only)

Tel: 09068 500379

### CLIENT ADVISORY

Migi Coyle

Tel: +44 (0)20 7752 3179

Victoria Wolcough

Tel: +44 (0)20 7752 3100

## PAYMENT

Buyers

Tel: +44 (0)20 7752 3138

Fax: +44 (0)20 7752 3143

Consignors

Tel: +44 (0)20 7752 3259

+44 (0)20 7752 3178

Fax: +44 (0)20 7581 5295

## SHIPPING

Tel: +44 (0)20 7752 3296

Fax: +44 (0)20 7581 3152

## STORAGE AND COLLECTION

Tel: +44 (0)20 7752 3248

Fax: +44 (0)20 7752 3321

## CONDITIONS OF SALE

This auction is subject to Important Notices,  
Conditions of Sale and to Reserves

## BUYING AT CHRISTIE'S

For an overview of the process, see the Buying at  
Christie's section.

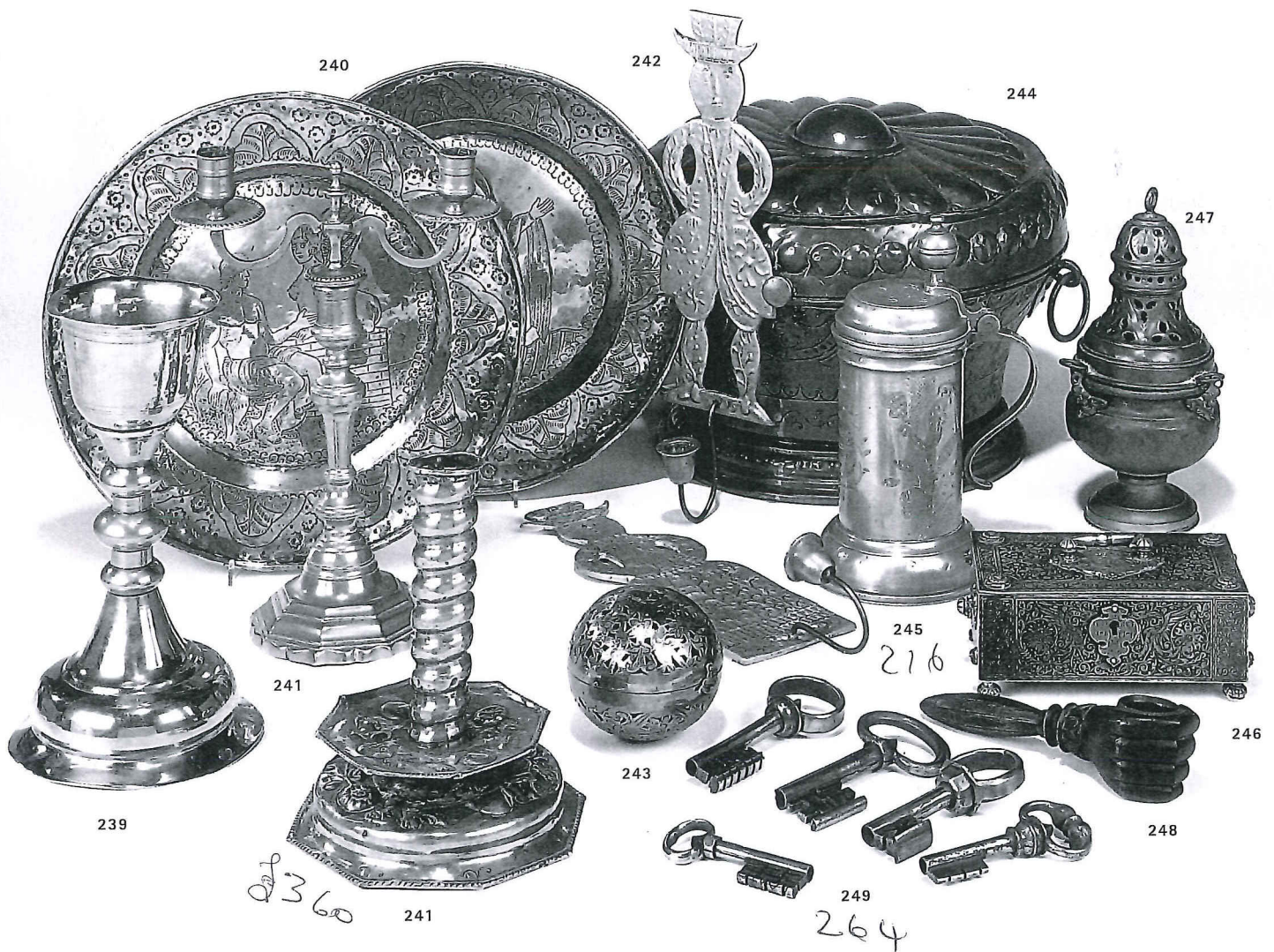
[10]

christies.com

# CHRISTIE'S

85 OLD BROMPTON ROAD, LONDON SW7 3LD TEL: +44 (0)20 7930 6074 FAX: +44 (0)20 7752 3321

View catalogues and leave bids online at [christies.com](http://christies.com)



239  
**A DUTCH BRASS CHALICE**  
 18TH CENTURY  
 with ball knopped stem and domed bell base  
 10¾in. (27cm.)

240  
**A PAIR OF ITALIAN COPPER DISHES**  
 18TH/19TH CENTURY  
 Engraved with a Doge and a mythological scene  
 respectively  
 13½in. (34.3cm.) diameter (2)  
**Estimate £300-400 US\$570-750**  
 €440-580

241  
**A SWEDISH EMBOSSED BRASS CANDLESTICK**  
 18TH CENTURY  
 With ribbed stem and fruit embossed octagonal  
 base, restored  
 8¼in. (21cm.)  
 and a French brass candlestick, 18th Century, with  
 associated detachable twin branch candle-branches,  
 13in. (33cm.) (2)  
**Estimate £400-600 US\$760-1,100**  
 €580-860

242  
**A PAIR OF BRASS WALL SCONCES OF A  
 MAN AND WOMAN**  
 20TH CENTURY  
 Of Dutch-Pennsylvanian design, with scrolled  
 candle branches  
 14½in. (37cm.) (2)

243  
**A DUTCH EAST INDIES PIERCED BRASS  
 HAND-WARMER**  
 19TH CENTURY  
 Fitted with gimbal mechanism in a foliate  
 engraved and pierced spherical case  
 4in. (10cm.) diam

244  
**A GERMAN EMBOSSED COPPER BREAD  
 BIN**  
 18TH CENTURY  
 The wythen hinged cover on a cylindrical body  
 engraved with lunettes  
 14in. (36cm.) diameter  
 And an engraved copper watering can, solder repairs (2)

245  
**A GERMAN PEWTER FLAGON**  
 EAELT 19TH CENTURY  
 The drum engraved with an armorial and a pair of  
 tulips, the bun lid with a ball thumbpiece  
 10in. (25.5cm.) 216

246  
**A GERMAN ETCHED SILVERED BRASS  
 CASKET**  
 MID 19TH CENTURY  
 Decorated with panels of foliage and dragons,  
 swing handle, key lacking  
 6¾in. (17cm.) wide  
**Estimate £300-500 US\$570-940**  
 €440-720  
 300

247  
**A CONTINENTAL BRASS CENSER AND  
 COVER**  
 18TH CENTURY  
 The pierced engraved top with three rings on a  
 bulbous base applied with three angel masks  
 9¾in. (25cm.)



5760

292

**292**  
**A RARE ENGLISH PEWTER SAUCER OR SPICE PLATE**  
 FIRST HALF 15TH CENTURY

With raised central boss and broad rim struck with a pewterers hammer, the reverse of the plate unmarked but with overall hammer marks and a raised strengthening fillet to the underside of the rim.  
 5in. (12.7cm.)

Estimate £2,000-3,000

US\$3,800-5,600  
 €2,900-4,300

This saucer is of the same type as the Tong castle saucer now in the collection of the Worshipful Company. It is marginally smaller and lacks the Lombardic 'E' struck on the opposite side of the rim to the hammer mark. For related literature see the following publications: *Pewter Society Journal* Autumn 1978 S.Schemmel. *Journals of the Archeological society* Vol 36. 'The Medieval Pewterers of London' 1985 by Ron Homer

The Worshipful Company of Pewterers 1979 Cat S1/125 The Museum of London catalogue: *Pewter A celebration of the Craft*, 1989, fig 46, and figs 28-29 for two further saucers dated to circa 1500 but with different devices on the rim.

'The first recorded marks are those of the pewterer's hammer, probably a sign of quality or an indication that the item was made by a guild member.' A fourteenth century bowl (No.13) in the same exhibition catalogue has a crowned hammer mark on the front rim and a strengthening rim to top of the plate. The Notes for this read 'Recent study shows that the earliest plates from archeological sites have a strengthening edge on the upper side of the rim. Later plates have it below the rim' as in the present example.



5400

293

**293**  
**A CHARLES I PEWTER 'BUN-LID' FLAGON**  
 BY THE MAKER E.G., CIRCA 1634

With typical shaped cover and pierced heart and bar thumbpiece, swan-neck handle and domed foot, the handle with touch (Cott O.P.5614A); the underside of the foot with a wriggle-work ownership mark of the letter 'W', some corrosion

33cm., 13in. to top of thumbpiece

Estimate £4,000-6,000

US\$7,600-11,000  
 €5,800-8,600

These flagons are of a type well known to collectors, though rarely appear on the market. The unidentified maker E.G. specialised in these bun lid flagons. They were used for both domestic and ecclesiastical purposes ever since the 1603 Act which allowed the use of pewter in the communion service. For a group of five flagons in a range of sizes, four of which are by the maker E.G. see Peter Hornsby: 'PEWTER OF THE WESTERN WORLD', plate 654



294

420

294  
A LARGE GERMAN PEWTER GUILD  
FLAGON  
DATED 1794

Cylindrical with ball thumbpiece and large front spout, the cover and drum with engraved inscription relating to the Master of the Guild and engraved with a triangle. Probably a Masonic device. Touch mark on handle

15in. (38cm.) overall

Estimate £400-600 US\$760-1,100  
€580-860

420

295  
A SET OF NINE PEWTER PLATES  
EARLY 20TH CENTURY

Damages and restorations, two further pewter plates, two lidless measures, two tavern mugs, and four other items

Estimate £300-400 US\$570-750  
€440-580

240

296  
AN ISLAMIC TINNED COPPER DISH  
18TH/19TH CENTURY

with an engraved inscription border, possibly Hebrew

15in. (38cm.) diam

48



297

297  
A GERMAN PEWTER TANKARD  
18TH CENTURY BY THE MAKER ABRAHAM MAGER  
(D.1741)

With spire finial and domed cover, later wriggle-work engraved overall with flowers and inscriptions

9¼in. (23.5cm.)

Estimate £500-600 US\$950-1,100  
€720-860

480



298

298  
A PAIR OF POLISH BRASS SABBATH  
CANDELABRA  
LATE 18TH/EARLY 19TH CENTURY

For five lights, the nozzles supported by engraved stags with Hebrew inscriptions, new threads between stem and foot

18in. (46cm.)

(2)

Estimate £600-900 US\$1,200-1,700  
€870-1,300

For related examples of Sabbath candelabra see Jay Weinstein: 'A collectors' guide to Judaica' Thames & Hudson 1985, pp. 44-45

U/S

†299  
A POLISH BRASS HANUKAH LAMP  
PROBABLY DANZIG, EARLY 19TH CENTURY

The pierced armorial backplate supported by lions

10¼in. (26cm.) wide

together with a pewter dish, the centre cast with a scene of David in the bullrushes, the border with a Hebrew inscription, 14in. (35.5cm.) diam; and a mother-of-pearl mounted Sabbath knife with engraved decoration, 5½in. (14cm.)

Jay Weinstein: *A Collector's Guide to Judaica*, Thames & Hudson, 1985, illustrates a very similar lamp, plate 166. The backplate is of the town arms of Danzig, except for the substitution of a candelabrum for two crosses. (3)

Estimate £500-800 US\$950-1,500  
€720-1,200

1200

LITERATURE:

Jay Weinstein: *A collectors' guide to Judaica*, Thames & Hudson, 1985, illustrates a very similar lamp, plate 166. In both the illustrated example and this one, the backplate appears to be that of the town arms of Danzig with the substitution of a candelabrum for two crosses.



299

## Auction Results

CHRISTIE'S



**Oak, Country Furniture, Folk Art,  
Works of Art and Sculpture  
London South Kensington  
85, Old Brompton Road  
South Kensington, London SW7 3LD  
Telephone: (020) 7930 6074**

**01 March 2005  
Sale No: 5753  
Total sold: 324,870**

The following prices in sterling include the buyer's premium and are rounded to the nearest pound. Lots which did not sell are not shown.

Christie's is not responsible for typographical errors or omissions.

Lot	Price	Lot	Price	Lot	Price
1	540	125	840	228	660
3	120	129	2,160	229	456
4	384	130	720	230	360
6	240	132	2,400	231	216
8	264	133	1,320	232	180
11	192	135	2,160	233	2,640
12	216	136	3,840	234	1,200
13	480	138	1,320	236	72
15	720	139	2,280	237	1,800
17	600	140	5,040	239	144
18	600	141	600	241	360
19	696	143	840	242	228
20	840	145	4,800	244	264
22	360	146	4,800	245	216
23	48	148	600	246	300
25	48	150	72	247	84
28	600	151	156	248	30
33	1,200	152	480	249	264
34	840	153	456	250	156
38	60	154	1,440	252	300
39	180	155	1,320	254	1,560
40	204	156	180	255	96
41	216	158	660	257	720
43	600	159	540	259	6,000
44	600	161	1,560	260	240
45	600	162	420	263	2,280
47	120	163	720	265	360

48	456	164	576	266	504
50	720	165	480	269	3,000
51	360	166	384	271	3,000
52	600	167	780	272	1,800
53	780	168	720	273	3,600
55	720	169	900	274	780
56	600	175	720	277	300
57	600	176	840	278	240
58	1,440	177	900	280	300
59	900	178	3,120	281	264
61	8,160	179	540	281A	660
63	3,840	180	480	282	480
66	240	181	480	283	420
67	240	182	1,800	284	360
69	840	183	1,560	287	2,880
70	120	184	60	288	1,200
71	240	185	900	290	6,000
72	264	186	480	291	2,880
74	600	187	480	292	5,760
76	60	188	504	293	5,400
78	156	189	288	294	420
80	480	190	1,140	295	240
82	156	191	2,160	296	48
83	3,600	192	3,600	297	480
84	96	193	1,560	299	1,200
85	48	194	1,680	301	420
86	5,760	194A	120	302	420
87	8,400	195	1,200	303	360
88	600	196	1,080	305	480
89	420	198	1,320	306	264
90	108	199	1,440	307	720
92	540	200	2,160	308	180
93	780	201	2,640	309	180
94	240	202	2,160	310	840
96	1,680	203	1,560	312	780
96A	336	204	1,440	314	36
97	120	206	2,160	315	420
99	48	209	4,800	316	180
100	120	210	720	317	540
101	144	212	1,440	318	5,040
102	780	213	5,040	319	1,020
104	480	214	1,320	321	120
106	840	215	3,120	322	264
109	180	216	1,560	323	2,160
112	480	219	1,920	325	8,160
114	420	220	1,320	327	6,000

117	660	221	1,140	330	26,400
121	960	222	540	331	4,800
122	4,200	224	228	333	9,000
123	720	225	60	334	6,600
124	504	226	840	335	7,800
124A	240	227	456		

[▲ Back to Top](#)