

GFU



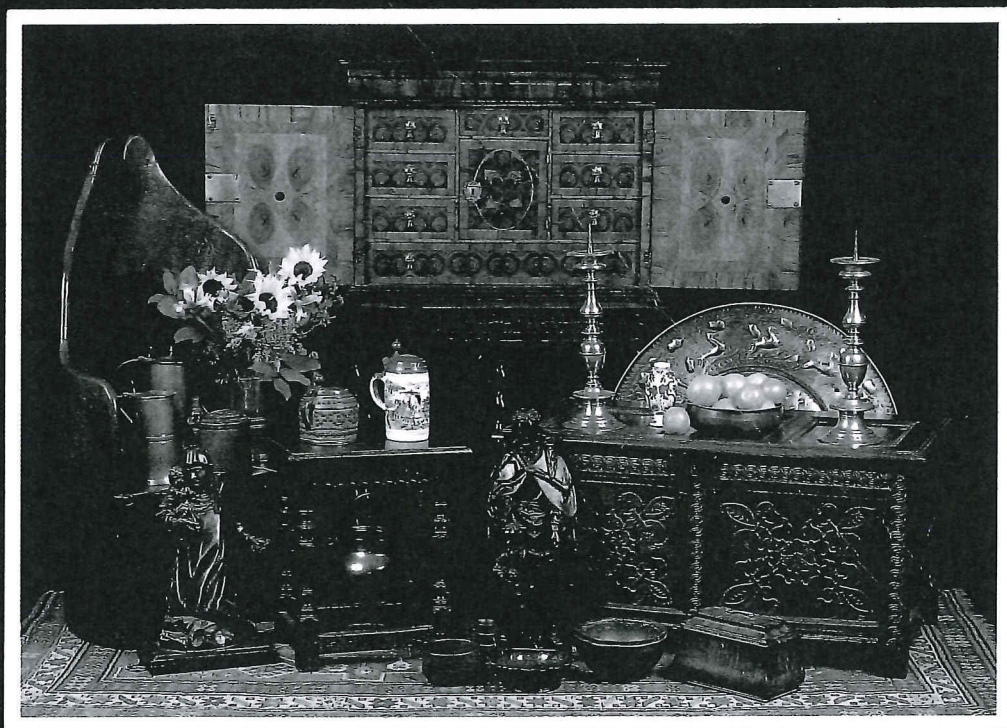
TWO DAY SALE

THE HARVEY GILL COLLECTION
of Vernacular Furniture and Works of Art

The Rupert Smith Collection of Pewter

A Private Collection of Samplers

Thursday 29 June 1995 in Edinburgh



FINE FURNITURE, CLOCKS, RUGS
and WORKS OF ART

Friday 30 June 1995 in Glasgow

THURSDAY 29 JUNE 1995 in our Edinburgh Saleroom

THE RUPERT SMITH COLLECTION OF PEWTER. (Lots 76-122)

References:

- Cott. = Cotterell, H.H. —
 Old Pewter, Its Makers and Marks, Batsford, 1929
 M.P.M. = Peal, Christopher
 More Pewter Marks, The Pewter Society, 1976
 A.M.P.M. = Peal, Christopher
 Addenda to More Pewter Marks, 1977

- 76 A PLAIN LIDDED TAPPIT HEN, the moulded lid with S-scroll thumbpiece above a tapering body, the lid engraved *G.W.*, $11\frac{3}{4}$ in. (29cm) high. See illustration £300-400
- 77 A PLAIN LIDDED TAPPIT HEN, the domed lid with S-scroll thumbpiece, above a reeded and tapering body, the lid with inscription *IR*, $11\frac{1}{2}$ in. (29cm) high. See illustration £250-350
- 78 A LIDLESS TAPPIT HEN, of Aberdeen type, imperial half-gallon capacity, marked *Banff*, and stamped underneath *IMP HAIF GALL DG*, 11cm high (bearing label underneath "Only recorded $\frac{1}{2}$ gal (Aberdeen lidless) tappit hen", $10\frac{1}{2}$ in. (27cm) high. See illustration £600-900
- 79 A CRESTED TAPPIT HEN, unmarked with interior "plowk" inscribed below rim, *TMC* above *AG*, $11\frac{3}{4}$ in. (29.5cm) high overall. See illustration £350-450
- 80 A LIDDED TAPPIT HEN, unmarked, the hinged domed lid with thumbpiece above a tapering body with interior "plowk" and inscribed initials *IH*, $10\frac{1}{2}$ in. (27cm) high. £100-150
- 81 A LIDDED COMMUNION FLAGON, with finial and spout, the hinged reeded lid with double lobed thumbpiece, unmarked, 10in. (25.5cm) high. £200-250
- 82 A LIDLESS MUTCHKIN, of Imperial pint capacity, stamped on rim 1 *Quart* with verification marks, and underneath *Imperial DG*, $6\frac{1}{4}$ in. (16cm) high. £150-250



Lots 76, 79, 78 and 77

- 83 AN OVAL HOT WATER ASHET, with drop handles at each end, 21in. (53cm) long, with an armorial crest on the broad rim, 21in. (53cm), 15½in. (40cm). £120-150
- 84 A SCOTTISH LIDDED COMMUNION FLAGON, with double lobed thumbpiece and scroll handle, inscribed *IK* over *CG* below rim, with mark of *Graham and Wardrop, Glasgow*, early 19th-century, 10in. (15.5cm) high overall. £180-250
- 85 AN ALE JUG OF HALF GALLON SIZE, the double domed lid with solid chair back thumbpiece, the body with inscribed initials, unmarked, 8½in. (21cm) high overall. £80-120
- 86 A LIDDED TAPPIT HEN, with scroll thumbpiece, domed lid, and scroll handle, with interior "plowk", no marks, 10½in. (26.5cm) high overall. £100-200
- 87 A PAIR OF BOWLS, with touch of *Graham and Wardrop*, late 18th-century, 10in. (25.5cm) diameter (Cott. 1943); also ANOTHER, 10in. (27cm) diameter, unmarked. (3) £200-250
- 88 A PLAIN SCOTTISH QUAICH, stamped with ownership triad *TJD*, 10⅝in. (10cm) diameter; also A BROAD RIMMED MULTIPLE REEDED 6IN. PLATE, late 17th/early 18th-century with touch mark of crossed spoons and lozenge in a beaded circle (repaired), 6in. (15cm) diameter. (2) £100-150
- 89 A 9IN. BROAD RIM PLATE, with *W.S.* marked on rim, and indistinct touch and "hallmarks" on underside, 23cm diameter. £70-100
- 90 A LIDDED BULBOUS MEASURE, the flat lid with acorn thumbpiece and scroll handle, with reeded body, no mark, 6in. (15cm) high overall. £50-70
- 91 A PLAIN FOOTED BOWL, with reeded edge, unmarked, 5½in. (14cm) diameter; also A BRITANNIA METAL INKWELL with hinged lid, three quill holes and removable ceramic well, 3¾in. (9.5cm) diameter; also A SPOON, 6¼in. (16cm) long; also AN ENCASED INKWELL, 2in. (5cm) wide. (4) £30-50
- 92 A LATE PLAIN LIDDED CHOPIN, unmarked, with domed lid and thumbpiece, 9½in. (23.5cm) high overall. £100-200
- 93 A PLAIN DOME LIDDED MUTCHKIN, with scroll handles and reeded body, unmarked, 6⅞in. (17.5cm) high overall. £150-250
- 94 AN OLD REPRODUCTION PLAIN LIDDED MUTCHKIN, unmarked, 6¼in. (16cm) high overall. £60-90
- 95 A DOUBLE-DOME LIDDED COMMUNION FLAGON, with acorn finial and thumbpiece, double scroll handle and projecting base with beaded rim, unmarked, 12½in. (32cm) high overall. £150-250
- 96 A PAIR OF 15IN. PLAIN RIMMED ARMORIAL CHARGERS, London, 18th-century (indistinct touch on one), inscribed with coat of arms of a dragon holding a sword, over a triple star and single chevron shield above words *NEC CITO NEC TARDE*, 38cm. (2) £200-300
See illustration on page 23
- 97 A BROAD RIM 18½IN. CHARGER, 18th-century, 47cm diameter (damaged and repaired). £100-150
- 98 A "CRESTED" TAPPIT HEN, unmarked, with *JB* inscribed below rim with interior "plowk", 12in. (30.5cm). £300-400
See illustration on page 22
- 99 A LIDDED TAPPIT HEN, with interior "plowk" and beaker liner, 11½in. (29cm). £300-400
See illustration on page 22
- 100 AN IRISH HAYSTACK MEASURE, of one-quart capacity, with touchmark of *Austen and Son, Cork*, 1830 (Cott. 153). £150-200
See illustration on page 22
- 101 AN IRISH HAYSTACK MEASURE, of one-gallon capacity, with touchmark of *Austen and Son, Cork*, circa 1830 (Cott. 153), similar to the above lot. £300-500
See illustration on page 22



Lots 98, 101, 99 (above), 103, 102, 104 and 100 (below)

- 102 A BOX FORM INK STAND, the domed hinged lid with finial, above an inkwell cornered by four quill holes, over pounce and wafer drawers with mark * Orford, $3\frac{1}{2}$ in. (9cm) wide. £80-120
See illustration
- 103 A DOUBLE DOME LIDDED DRUM TANKARD, with single fillet to the body, touchmark of Richard Going, Bristol, circa 1720 (repaired), $6\frac{7}{8}$ in. (17cm) high overall (Cott. 1909). £120-180
See illustration
- 104 A BOX STANDISH, the hinged rectangular lid enclosing inkwell and sander, above pen drawer, early 19th-century, $8\frac{1}{4}$ in. (21cm) long. £150/250
See illustration
- 105 A BALUSTER SHAPED JUG, with scroll handle, no marks, $6\frac{3}{4}$ in. (17cm). £40-60
- 106 A $15\frac{3}{4}$ IN PLAIN RIMMED CHARGER, with maker's mark I.H. (rubbed), North Country, 18th-century, 40cm diameter. £40-60
- 107 A PAIR OF $13\frac{1}{2}$ IN. BROAD RIMMED PLATES, with maker's touch on underside, London. (2) £150-250
- 108 A LIDDED BALUSTER MEASURE, with embryo shell thumbpiece, the lid with initials on top and mark of W. Scott on underside of lid, 5in. (12.5cm) high overall; also ANOTHER LIDDED BALUSTER MEASURE, with embryo shell thumbpiece, dented, $4\frac{1}{2}$ in. (11.5cm) high overall; also A PINT MEASURE, with scroll handle and V.R. excise mark, 5in. (13cm) high overall. (3) £50-80
- 109 A DOME-LIDDED TAPPIT HEN, no marks, inscribed HM above IS to lid, $11\frac{1}{4}$ in. (28.5cm) high overall. £150-250
- 110 A BALUSTER TANKARD, with scroll thumbpiece and handle, indistinct maker's touch on underside, London, $8\frac{3}{4}$ in. (22.5cm). £180-250
- 111 A 15IN. BROAD RIM CHARGER, with wrigglework decoration of a central seated lion surrounded by trailing foliage to the rim, indistinct maker's touch, 38cm diameter; also THREE PLATES, one 9in. with indistinct touch mark on underside and letters on rim, one $9\frac{1}{2}$ in. with maker's touch on underside and crest of tree growing from crown on rim, and one $11\frac{7}{8}$ in. with indistinct maker's touch E(?F) I and "hallmarks" on underside. (4) £250-350

*
hand is repaired
& wafer

2500
SUN. between
2-5

1/2/6



Lots 96, 117, 119, 118 and 96

112 A PAIR OF 8 3/4 IN. PLATES, each with indistinct monogram (including letter H) on rim and indistinct maker's touch on underside, 22cm diameter. (2) £80-120

117 A SCOTTISH COMMUNION FLAGON, the hinged lid with double lobed thumbpiece, the tapering body inscribed *Asso^{re}. Congregational Arbroath, 1821*, with the mark of *W^m. Scott, Edinburgh, 10 1/2 in. (27cm) high overall.* £250-350
See illustration

113 A SET OF THREE 8 1/2 IN. NARROW RIMMED TRIPLE-REEDED PLATES, bearing the "hallmarks" of *Edward Leapidge, London, circa 1700*, also stamped E on each rim, 8 1/2 in. (21.5cm) diameter (Cott. 2893). (3) £200-300
** Here one hallmarked Touches on Rim on well + condition*

118 A GUERNSEY MEASURE, with double acorn thumbpiece, reeded rim and base, no marks, 10 3/4 in. (27.5cm) high overall. £180-250
See illustration

114 A SET OF FOUR 9 IN. PLAIN RIMMED PLATES, with the mark of *Thomas Rhodes* and crowned "X" mark, early 18th-century, the rims engraved with a crest of a bear's paw holding a Maltese Cross, 9 in. (24cm) diameter. (4) £100-150

119 A GOOD 16 1/2 IN. STUART CHARGER, with multiple reeded edge, bearing the "hallmarks" on the upper side and touch of *John Barlow, London, circa 1700*, 16 1/2 in. (42cm) diameter (Cott. 256). (2) £180-250
no could be done one of Neates
See illustration

115 TWO PAIRS OF CANDLESTICKS, of turned baluster form, 9 1/2 in. (24cm) and 8 1/2 in. (22cm). (4) £60-90

116 A TOBACCO JAR, with double domed-lid and acorn finial with reeded tapering drum body, 5 3/4 in. (15cm); also THREE HINGED LIDDED DRUM INKWELLS, with contents and reeded bodies, 2 1/4 in. (5.5cm) high. (5) £60-90

120 A SET OF THREE TALLOW CANDLE MOULDS, each bearing the raised mark of *Hamage, Edinburgh*, in a later wooden rack, 9 1/2 in. (24.5cm) long. (4) £100-200



Lot 121

- 121 A COMPLETE SET OF CHESS PIECES, one half being pewter, the other white metal. £200-300
See illustration

- 122 A 9IN. NARROW RIMMED PLATE, with reeded rim and "hallmarks" (rim pierced for hanging), 23cm diameter; also AN OIL BURNING CHAMBER LIGHT, the oil well with hinged lid and spout, above a turned stem with handle, on moulded spreading base, 11 $\frac{3}{4}$ in. (30cm) high overall. (2)
£60-90

Other Properties

- 123 A LARGE FLAGON, with scroll handle and spout, with maker's touch *John Carruthers Crane, Bewdley*, early 19th-century, hallmark below rim (Cott. 1197), 10in. (25.5cm) high overall.
£250-350

- 124 AN 18IN. BROADLOOM CHARGER, no marks, 46cm diameter.
£100-200

- 125 A JOKE CUP, inscribed Oxford and Cambridge, 4 $\frac{1}{2}$ in. (11cm), A LIDDED MEASURE, 2 $\frac{3}{4}$ in. (7cm), TWO QUARTER GILL MEASURES, AN EIGHTH GILL MEASURE, all with excise marks, and a small TANKARD, inscribed "Emmit", 3 $\frac{1}{2}$ in. (9cm). (6)
£60-90

- 126 A QUANTITY OF PEWTER, including a 19th-century tankard of quart capacity, with scroll handle and excise marks, 6 $\frac{1}{2}$ in. (16cm), another similar, 6 $\frac{1}{2}$ in. (16cm), two lidded measures, one half-pint, 4 $\frac{1}{2}$ in. (11.5cm), the other a gill, 3 $\frac{3}{4}$ in. (10cm), with thumbpieces and excise marks, and a salt with gadrooned decoration, 2 $\frac{1}{2}$ in. (6cm) high, with mark of *R. B. Readhead*, also two measures, both half-gill, with excise marks and scroll handles. (7)
£100-200

- 127 A QUANTITY OF PEWTER AND METALWARE, including a pair of salts with three cabriole leg and hoof feet supports, 3 $\frac{1}{2}$ in. (9cm) wide, a baluster form lidded jug with wicker handle, with mark of *James Dixon & Sons*, a food bowl, 9 $\frac{1}{2}$ in. (24cm) high overall, a tankard with spout at right angles to handle. (qty.)
£100-200

- 128 A 13-PIECE COMMUNION SET, consisting of seven chalices, unmarked, bearing inscription *Un. Asso. Congregation. Rousay 1834*, 8 $\frac{7}{8}$ in. (22cm) high, four lidded flagons, each with double-lobe thumbpieces and scroll handles, mark of *Kiniburgh*, with same inscription as before, 10 $\frac{1}{2}$ in. (26cm) high overall, and a pair of 15in. broad rim chargers, bearing mark of *Kiniburgh*, and same inscription, 38cm diameter. (13)
£1,000-1,500

- 129 Spare lot.

THURSDAY 29 JUNE 1995 in our Edinburgh Saleroom**THE HARVEY GILL COLLECTION OF
VERNACULAR AND CONTINENTAL FURNITURE
AND WORKS OF ART (Lots 130-282)**

including
Sculpture, Treen, Pewter, Brassware and Stained Glass

Harvey Gill, who achieved the venerable age of 102, assembled this collection over much of his adult life.

He travelled extensively throughout the country in pursuit of antique furniture and works of art of a rare or unusual nature and his unfailing eye for the esoteric is evident throughout the collection.

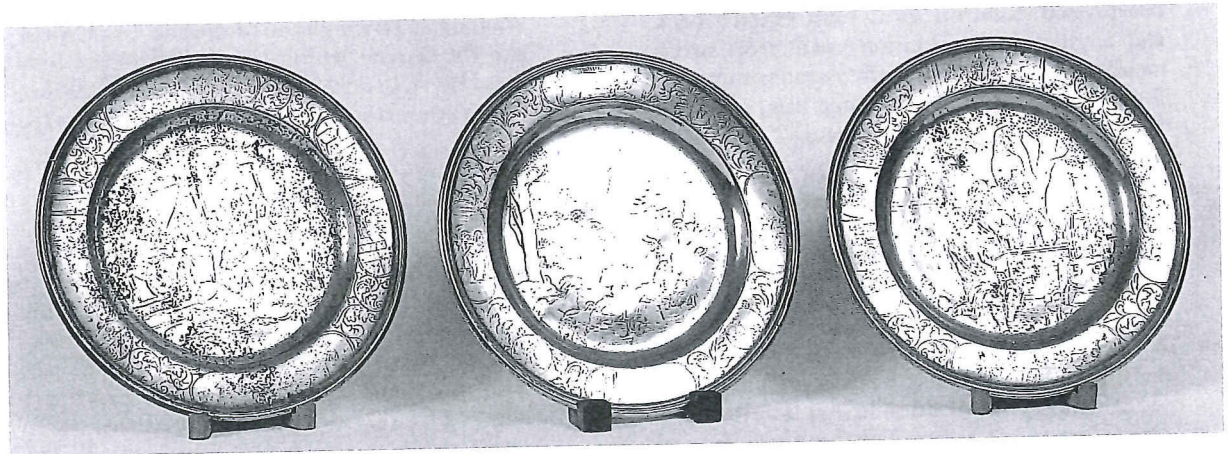
An engine designer with William Beardsmore, Gill was involved in the creation of the famous 'R101' engine, an example of which is on display at The Science Museum in London.

His skill as an engineer presented him with the opportunity of work on the continent, including a period in Spain developing the diesel railway. It was during this time that he added the many pieces of continental origin to his burgeoning collection.

Through exercising an acute selectivity these works sat comfortably alongside those of the British vernacular tradition at Gill's sixteenth century home at Manor House, Greystoke, where they have remained until their removal to Phillips in Edinburgh for convenience of sale.

PEWTER

- 130 A CIRCULAR BARBER'S BOWL, of traditional form, the soap-well lacking, the rim with "hallmarks" of *Banckes of Bewdley*, early 19th-century, 28cm diameter (Cott. 227). £100-150
- 131 A PAIR OF 9IN. SINGLE-REEDED PLATES, with well hammered booges, with mark and "hallmarks" of *William Hunter, Edinburgh*, mid 18th century, 23cm diameter (Cott. 2473). (2) £50-80
- 132 THREE GRADUATED IMPERIAL MEASURES, of plain rounded "Haystack" form and of quart, pint and half-pint capacities, the two larger measures having ball terminals to the scroll handles, all with touches of *Fothergill, Bristol* (probably Henry Fothergill), post-1826, 18.5cm, 15.5cm, 12cm high (Cott., M.P.M. and A.M.P.M. 1740). £300-500
See illustration
- 133 A SCOTTISH "CRESTED" TAPPIT HEN, with interior "plowk", circa 1800, 30cm high. £300-400
See illustration
- 134 A SCOTTISH LAVER, of slightly tapering cylindrical form with scroll handle, the flat lid with double-lobed thumbpiece, the interior base struck with marks of *Graham & Wardson* (Cott. 1943), late 18th-century, the lid engraved with an armorial, 26.5cm high overall (a scratched inscription under base "Aberfoyle, Duke of Montrose" refers to the armorial). £200-300
- 135 A SCOTTISH LAVER, of slightly tapering cylindrical form, the interior with touch of *Robert Nicholson* (for similar marks of this family see Cott. 3397 to 3400. This particular touch does not appear to be recorded), with flat lid, double lobed thumbpiece and scroll handle, 26.5cm high overall. £200-300
- 136 A LARGE SCOTTISH FLAGON, of laver form, the tapering cylindrical body with pouring lip and spreading base, the interior with mark of *Graham & Wardrop, Glasgow*, circa 1800 (Cott. 1943), with lid having a pointed finial, twin-lobed thumbpiece and plain scroll handle, 33cm high overall (slight repairs to foot). £200-300
- 137 A SET OF SIX 9 $\frac{3}{4}$ IN. SINGLE-REEDED PLATES, Continental, possibly Swiss, with touch initialled *H.A.*, the borders variously engraved with classical or biblical scenes or rural pursuits, the centres of three engraved with biblical scenes including Christ and the Women of Samaria (John ch. 4 v.v. 1-9), the Annunciation to the Shepherds (Luke ch. 2 v. 8 ff.), the Visit to Solomon's Court of the Queen of Sheba (1 Kings ch. 10), one from classical mythology depicting Mercury, Venus, Cupid, Juno, and Minerva, and two with hunting scenes, mid 18th century; and A SIMILAR PLATE, with touch initialled *P.A.K.* and dated 1744, depicting revellers outside a tavern, mid 18th-century, all 24.5cm diameter. (7) £600-900
See illustration



Lot 137 (part)

175 EARLY 17TH-CENTURY FLEMISH BRASS CANDLE-STICK, leaf clasped, with spiral twisted stem above mask applied triform base, claw and ball feet, 50cm high. £300-500

176 A GEORGE III FRUITWOOD CROSSBANDED AND FEATHER BANDED TEA CADDY, the raised and moulded lid with drop handle enclosing three pewter lined and lidded canisters above a bulbous tapering base, 28 x 15cm. £400-600
See illustration

177 A MARBLE LAMP, in the shape of an urn (fitted for electricity), with turned pierced lid and moulded base, 30cm (damaged). £30-50

178 AN EARLY 19TH-CENTURY ROSEWOOD AND MOTHER-OF-PEARL INLAID WRITING BOX, the hinged fall front and hinged back opening to reveal writing surface and stationery compartments, 35.5cm. £180-250

179 A PAIR OF CARVED OAK PANELS, each in an arched format enclosing noble figure in period costume within architectural setting, possibly 17th-century. (2) £100-200

180 A CARVED OAK HERALDIC PANEL, the shield mounted by an armour helmet, crown and lion surrounded by scrolling acanthus leaves, 63 x 61cm. £200-250

181 AN EARLY 19TH-CENTURY ROSEWOOD TEA CADDY, the rectangular hinged lid enclosing two lidded canisters (with alterations), 19.5cm; also a modern Indian PLAYING CARDS BOX with brass inlaid top, 18cm; also an early 19th-century rosewood mother-of-pearl inlaid WORK BOX (distressed), 2cm. (3) £70-100

182 AN EARLY 19TH-CENTURY OVAL TRAY, with moulded raised edge and alterations, 41 x 32cm. £60-90

Other Properties

183 A SPANISH LATE 16TH/EARLY 17TH-CENTURY POLYCHROME FIGURE OF ST. SEBASTIAN, with arms tied behind his back and legs bound together (distressed and wormed), 33.5cm long. £800-1,200

See illustration

184 A SPANISH LATE 16TH/EARLY 17TH-CENTURY POLYCHROME FIGURE, probably depicting Christ, wearing a long gown and cape (damaged and wormed), 71cm long. £600-800

See illustration

185 A SPANISH LATE 16TH-CENTURY FIGURE, probably depicting Mary, in a dress and blue cape (badly wormed, with projecting iron rod support), 79cm long. £300-450

186-189 Spare lots.

CONTINENTAL CERAMICS

190 A DATED 17TH-CENTURY KREUSSEN STONEWARE TANKARD, carved and enamelled with *kerbschnitt*, painted with a pelican feeding its young with blood from its breast, within circular medallion, above inscription *M.B.B.S.O. 1666*, with pewter cover and mounts, 12.5cm (repaired). £300-400

See illustration on page 36

191 A 17TH-CENTURY GERMAN TANKARD, possibly Kreussen, the brown cylindrical body decorated with bands of dark brown applied flowerheads, with pewter cover and mounts, 19cm (cracked). £300-400

See illustration on page 36

192 AN 18TH-CENTURY POLYCHROME GERMAN FAIENCE TANKARD, possibly Erfurt, of cylindrical shape painted with a huntsman and other figures in a landscape, with pewter cover, 28cm (base cracked). £300-400

See illustration on page 36



Lots 190, 191, 192 and 193

- 193 A WESTERWALD STONEWARE GLOBULAR JUG, with reeded handle and cylindrical neck, the body decorated with incised stylised foliage in blue and manganese, 15cm (rim chipped, hairline crack to base). £150-250

See illustration

- 194 AN 18TH-CENTURY DUTCH STRAWBERRY DISH, oval with scalloped rim with scroll handles, painted with broad border of flowers, foliage and scrolls, the pierced base painted with scattered flowers, standing on four feet, 27.5cm, painted mark J. Duyn (slight chips to rim). £300-400

ENGLISH CERAMICS

- 195 FOUR CIRCULAR POT LIDS, "The Quarry", 11cm, two "French Street Scene", 12cm, and one of children fishing, 10cm (three framed). (4) £100-200
- 196 A SPODE ARMORIAL DISH, of rectangular shape painted in the centre with a coat of arms inscribed *Spernit Humum*, with gilt foliate border, 27.5cm, impressed mark. £80-120
- 197 A COPPER LUSTRE STEMMED CUP, decorated with a broad band of flowers in relief painted in enamel colours, 10.5cm; a Newhall style TEA BOWL AND SAUCER, painted with flower sprigs, 7cm; and a circular INKSTAND, painted with flowers, 11cm (cracked). (4) £40-60

ORIENTAL

- 198 A CHINESE BLUE AND WHITE JARDINIÈRE, of globular shape painted with prunus, 16cm, Kangxi mark on base (crack through base); a blue and white VASE of ovoid shape, 16.5cm (no cover); and an Imari TEA BOWL AND SAUCER, 7cm (chipped). (4) £120-180
- 199 A KANGXI BLUE AND WHITE DEEP BOWL, with everted rim, the exterior painted with dragons chasing flaming pearl and scrolling clouds, the interior with fish leaping out of water, 19cm diameter, six-character *Xuan De* mark (cracked, chips to rim). £100-150
- 200 A JAPANESE IMARI BALUSTER VASE WITH DOMED COVER, painted with stylised foliage between shaped borders, 30cm. (2) £100-150

GLASS

- 201 A PAIR OF EDINBURGH CRYSTAL GEORGIAN STYLE RUMMERS, the tall funnel bowls engraved and cut with swags, standing on square lemon squeezer base, 16cm; five matching WINE GLASSES, 14cm (one chipped). (7) £100-150
- 202 SIX CUT-GLASS WINE GLASSES, the round funnel bowls with band of facets, 12cm; a cut-glass WINE GLASS with trumpet bowl and knopped stem, 12.5cm; and two other WINE GLASSES, 11.5cm. (10) £40-60
- 203 A CRANBERRY GLASS CARAFE, of flattened ovoid shape with faceted neck and star-cut base, 18cm; and four cranberry glass TUMBLERS, 10cm. (5) £60-80