

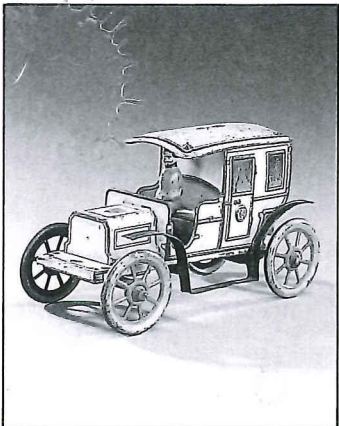
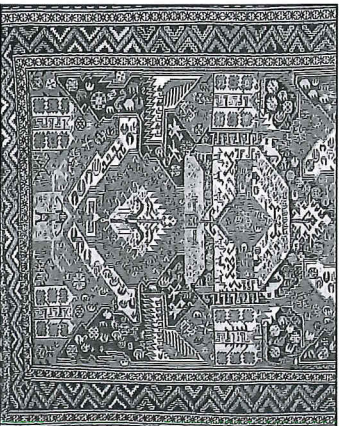
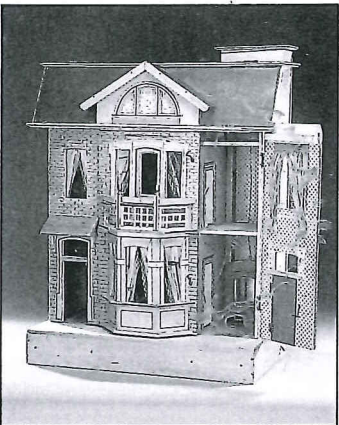
GFR



SUSSEX

FURNITURE & WORKS OF ART
POTTERY & PORCELAIN
CARPETS & RUGS
TOYS, TRAINS & SOLDIERS
TEDDY BEARS & DOLLS

21 March to
29 March 1995



SOTHEBY'S
FOUNDED 1744

Handwritten signature

368 **A BENT-PINE OVAL BOX AND COVER**, Scandinavian circa 1891, with flat top and projecting ends and loop handle, decorated overall with impressed hearts, flowerheads and geometric roundels and dated 1891, 41cm; 16in wide £250-400

369 **AN AMERICAN PAINTED WOOD DECOY DUCK**, early 20th Century, with glass eyes and painted details, now on a wood stand, 26cm; 10in long £250-300

370 **TWO DUTCH FRUITWOOD 'SHOE' SNUFF BOXES**, early 19th Century, each with hinged top with incised carved foliage and linear patterns and ivory inlaid hearts, the larger 10cm; 4in £180-250

371 **A FRUITWOOD DOUBLE SHOE SNUFF BOX**, English mid 19th Century, with sliding lid and brass piqué inlaid soles, 7cm; 2 3/4in; and an oak shoe snuff box (2) £180-250

372 **A PAIR OF DUTCH FRUITWOOD 'CLOG' SNUFF BOXES**, late 19th Century, each with removable lids, 8.5cm; 3 1/4in £80-120

373 **A PAINTED METAL AND WOOD BIRDCAGE IN THE FORM OF A HOUSE**, late 19th Century, the rectangular base with wire-work structure with side pierced feeding drums and an arched roof surmounted by a weathervane, red and green paint, 107cm; 3ft 6in £300-400

374 **A GREEN PAINTED TIN-PLATE SHEPHERDS LANTERN**, early 19th Century, of cylindrical form with fluted domed chimney with loop handle on cruciform base, panels replaced, 46cm; 18in £200-300

375 **AN IVORY PERPETUAL CALENDAR**, 19th Century, comprising an inner dial and an outer ring both with turned rims and engraved decoration, 11cm; 4 1/4in; in ebonised wood circular frame £250-350

376 **A WHALEBONE STAY BUSK**, mid 19th Century, engraved on one side with a ship, a buliding, a star, a vase of flowers and the Union Jack, 37cm; 14 3/4in £150-200

377 **A CARVED AND PAINTED WOOD MODEL OF A ROWING BOAT**, circa 1900, with deck details, seats and boards, three oars only, on rectangular mahogany base with ball feet in a glazed rectangular case, 41cm; 16 1/4in long £150-200

(For colour illustration see page 34)

378 **A PAINTED SHIP MODEL HALF BLOCK DIORAMA**, English mid 19th Century, of a three masted sailing ship and a barge in a seascape within a glazed case, 86cm; 2ft 10in wide £250-400

378A **A HALF BLOCK PAINTED WOOD SHIP MODEL**, late 19th Century, of a three masted sailing ship with a smaller yacht in integral wood frame, 104cm; 3ft 5in wide £300-500

379 **A DIEPPE CARVED IVORY BALL DIPTYCH**, late 19th Century, carved with scenes of Renaissance figures in battle, 10cm; 4in wide when open £150-250

380 **AN ALABASTER RELIEF PLAQUE OF ST. GEORGE AND THE DRAGON**, South European 19th Century, of rectangular form weathered, 37cm; 14 3/4in high £150-200

(For colour illustration see page 34)

381 **A PAIR OF LEATHER FIGURAL TOBY JUGS**, English circa 1800, in the form of a man in contemporary dress smoking a pipe, and his female companion holding a tankard, polychrome paint finish, 40 and 33cm; 15 1/2 and 13in £1,200-1,800

382

383 **A SCRIMSHAW WHALES TOOTH**, late 19th Century, engraved with H.M.S. Victory and a portrait of Lord Nelson, 12cm; 4 1/2in £100-150

(For colour illustration see page 34)

384 **AN IVORY FIGURE OF A BEGGAR LADY**, German circa 1800, standing in ragged clothing with pots and pans in her belt holding a walking stick on an ivory and ebony base, 16cm 6 1/4in £600-800

385 **A COLLAGE AND WATERCOLOUR PICTURE OF THE VIRGIN MARY**, Spanish 18th Century, with silkwork and cut paper foliate surround within a painted marbled and gilded frame, 28 by 23cm; 11 by 9in overall £150-200

386 **A GILT AND SILVERED METAL FLOWERING VASE MODEL**, probably Italian mid 19th Century, in the form of an embossed brass urn on a wooden carcass supporting a spray of silvered and gilt and coloured metal grape vine clusters and corn sheafs, 142cm; 4ft 8in £100-200

BRITISH & CONTINENTAL PEWTER

387 **MISCELLANEOUS PEWTER**, 18th and 19th Century, comprising a dish by Thomas Cave, 34cm; 13 1/2in; six assorted plates, eight assorted pot bellied lidless measures and three assorted tavern mugs (18) £300-400

(For colour illustration see page 34)

388 **A SCOTTISH CRESTED TAPPIT HEN**, late 18th Century, of usual shouldered form with bands of reeding and ownership initials 'AM IG' to front of body, with erect thumbpiece and cover with spire and ball finial, 25cm; 9 3/4in overall; 20cm; 8in to rim £250-350

389 **A VICTORIAN QUART TAVERN MUG**, circa 1840, of straight sided tapering form; a quart baluster tankard by James Yates and a quart lidded trophy tankard dated 1868 (3) £150-200

390 **A GEORGIAN PEWTER DISH**, 18th Century, no apparent marks, 34cm; 13 1/2in; a set of four plates by John Ingram of Bewdley circa 1780 each with a monogram to rim and touch adverso (O.P. 5725), 24cm; 9 1/2in; and four smaller reproduction plates (9) £220-280

391 **A PAIR OF CANDLESTICKS BY THE MAKER R.N.** of Georgian design with knopped stem and canted square base, 15cm; 6in £100-150

392 **A FLEMISH LIDDED FLAGON**, early 19th Century, of pear shape with domed cover and shell thumbpiece, 25cm; 9 3/4in £100-150

393 **A SET OF SIX PLATES BY JAMES YATES**, Birmingham late 19th Century, each with touch mark and ownership initials adverso, 24cm; 9 1/2in; and three Georgian plates, 18th Century, 23.5cm; 9 1/4in on average (9) £200-300

394 **A BALUSTER MEASURE**, North Country late 18th Century, with two reeded engraved bands and flat cover with engraved circular bands and projecting rim under lid with a ball thumbpiece, 12cm; 4 3/4in; and a pair of ejector candlesticks, early 19th Century, with baluster stems and circular bases, 19.5cm; 7 3/4in (3) £200-250

395 **A REEDED RIM BOWL BY THOMAS COMPTON**, circa 1800, the deep well with everted multiple reeded rim, 25.5cm; 10in, and a pair of plates by William Sandys Green, circa 1730, each with touch adverso and engraved armorial to rims (O.P. 1991), 25cm; 9 3/4in (3) £150-200

(Lowville Lens
Houg. 100.120)

£160

bright but no

20th Su

not
bad
£220

no
but
£4-25
1.1e

no
when
£15
not

Nice
but
N/S
191

no
way
N/S

Nice
£11

no
way
£27

very
nice

£19
cup

Nice!
but not
at £15
the Gr
Plate

396 **A NORMANDY FLAGON, late 18th Century**, of shouldered form with engraved bands of reeding on integral spreading circular foot, the heart shaped cover with touch mark of NSB and ownership initials N.R. with double acorn thumbpiece and handle with scroll terminal, 29cm; 11¹/₂in £250-300

397 **A COLLECTION OF SEVEN POT BELLIED LIDLESS BALUSTER MEASURES OF GILL CAPACITY, 19th Century**, a similar half-gill measure, a similar bell-metal gill measure, a pewter straight sided gill measure, a footed beaker, early 19th Century and a Scottish copper measure of 2 glass capacity by Hugh Shaw of Inverness (12) £150-200

(For colour illustration see page 34 and Front Cover)

398 **A LARGE GEORGIAN SPIRE FLAGON BY JOHN NEWHAM, circa 1720**, with tapering cylindrical body with a raised band above which are a row of indistinct 'hallmarks' on a spreading circular reeded foot with a 'broken' double scrolled handle, chairback scroll thumbpiece and domed cover with acorn thumbpiece, touch of I.N. under base, restoration around cover finished 40.5cm; 16in £1,000-1,500

For similar flagons see The Worshipful Company of Pewterers of London 1968 catalogue Nos 144 & 146 figs 18a & 18c, the former made by Newham but the latter closer in style especially the treatment of the handle

399 **A FRENCH PEWTER CHARGER, early 18th Century**, with a reeded rim, the border namely engraved 'PRIX DV ROY DE PLAISIR DONNE PAR MESSIEURS LES CONTRERES DE S^r BARBE REMPORTE PAR LE SIEUR PONSAR LAN 1718' and with an engraving of St Barbara flanked by leafy scrolls, 45cm; 15³/₄in £300-400

400 **A SCOTTISH CHALICE, 18th Century**, the wide bowl with a raised girdle on a ball knopped stem and stepped domed foot, some damage, 20cm; 8in £180-220

For a similar shaped example see Cotterell, *Old Pewter*, plate XXX fig D

BRASS AND COPPER

401 **A BRASS TWELVE BRANCH CHANDELIER, Dutch 19th Century**, of eighteenth Century design with a ball and baluster stem and two tiers of 'S' scrolled branches, 66cm; 2ft 2in £400-600

(For colour illustration see page 34)

402 **A FLEMISH BRASS CANDLESTICK, circa 1500**, the domed circular dished base rising to triple knopped stem and cylindrical nozzle pierced with rectangular ejection holes, 20cm; 8in £800-1,000

403 **A PAIR OF BRASS PRICKET CANDLESTICKS, Flemish 18th/19th Century**, each with a dished drip tray on a swirled foliate stem and vase shaped knob on a triangular base cast with angel masks, 43cm; 17in £300-500

404 **AN EMBOSSED BRASS ALTARSTICK, Italian 18th/19th Century**, the beaded dished top on a fluted foliate knopped triangular stem and base on paw feet, the pricket converted to electricity, 92cm; 3ft £150-250

(For colour illustration see page 34)

405 **A PAIR OF EARLY GEORGIAN BRASS CANDLESTICKS, English circa 1715**, each with hexagonal baluster stem and domed hexagonal base, 16cm; 6¹/₄in; and a brass candlestick, late 17th Century, the multi-baluster stem with associated octagonal base (3) £200-300

406 **A PAIR OF GEORGIAN BRASS CANDLESTICKS, mid 18th Century**, each with lobed petal base and double knopped stem with detachable sconces, nozzles reduced, 22.5cm; 8³/₄in £250-350

(For colour illustration see page 34)

407 **A PAIR OF FRENCH BRASS CANDLESTICKS, 18th Century**, each with swirled fluted tapering knopped stem on a gadrooned domed base with etched foliate decoration and shaped rim, sconces lacking 18cm; 7in £300-400

(For colour illustration see page 34)

408 **A PAIR OF EARLY GEORGIAN BRASS CANDLESTICKS, circa 1715**, each with dished canted square base and double knopped tapering stem, some restoration, 17cm; 6³/₄in £200-300

409 **A PAIR OF SIGNED BRASS WALL BRACKETS, Italian 18th Century**, each with a circular back-plate and knopped scrolled branch supporting a dished drip tray and a pricket, prickets converted to electricity, each inscribed 'REDE DI NICOLO DI ANTONIO PAGOLF, 24cm; 9¹/₂in deep £300-500

410 **A GEORGIAN BRASS BALUSTER CASTOR, circa 1800**, of ribbed tapering form with domed pierced cover and circular foot, 14cm; 5¹/₂in; and a brass ejector candlestick, early 19th Century, with domed circular base and plain cylindrical stem with side ejector button, 19cm; 7¹/₂in (2) £150-200

411 **A PAIR OF BRASS SPIRAL OPEN TWIST CANDLESTICKS, English circa 1900**, each with stepped domed circular base, 32cm; 12¹/₂in £100-150

(For colour illustration see page 34)

412 **A PAIR OF FRENCH BRASS CANDLESTICKS, 18th Century**, each with knopped stem cast in relief with egg and dart moulding and foliage on a complementary shaped base with cast decoration, 25cm; 10in £250-350

413 **A BRASS SIXTEEN LIGHT CHANDELIER, Continental, circa 1900**, the elaborate baluster frame with pierced rings supporting two tiers of branches connected by a ring of pierced tracery and with Adam and Eve backplates or putto and vase backplates above each scrolled arm, 122cm; 4ft £1,000-1,500

414 **A NEAR PAIR OF GEORGIAN BRASS SIDE EJECTOR CANDLESTICKS, 18th Century**, each with domed base and knopped cylindrical stem, one brass side handle broken, 17cm; 6³/₄in; a pair of Indian candlesticks of Victorian style, a pair of Victorian candlesticks and two further single brass candlesticks (8) £250-300

(For colour illustration see page 34)

415 **A PAIR OF GEORGIAN BRASS CANDLESTICKS, circa 1740**, each with knopped cylindrical tapering stem and canted square base, 16cm; 6¹/₂in; and a pair of mid Georgian brass candlesticks each with double knopped cylindrical stem and later circular base, 21cm; 8¹/₄in (4) £300-500

416 **A BRASS TABLE MIRROR, late 19th Century**, the wooden backplate with an embossed brass shaped surround decorated with stylised dragons and leafy vinery, 57cm; 1ft 10¹/₂in £300-400

417 **A BRASS FLAT IRON, Georgian circa 1800**, with turned wood handle, engraved spear shaped flat top, the pull-up back-plate engraved 'No.3' and with iron brick inside, 17cm; 6³/₄in £100-150

418 **THREE COPPER CASTELATED JELLY MOULDS, Victorian late 19th Century**, one oval with open centre and the others rounded, the tallest 13cm; 5in; and a copper kettle (4) £300-400

419 **A COLLECTION OF TWENTY WEST COUNTRY BRASS FRIENDLY SOCIETY POLEHEADS, 19th Century**, including High Littleton, Seavington, Westbury sub Mendip, West Pennard, etc £400-500



344 384 363



355 349 350 347



363a



381



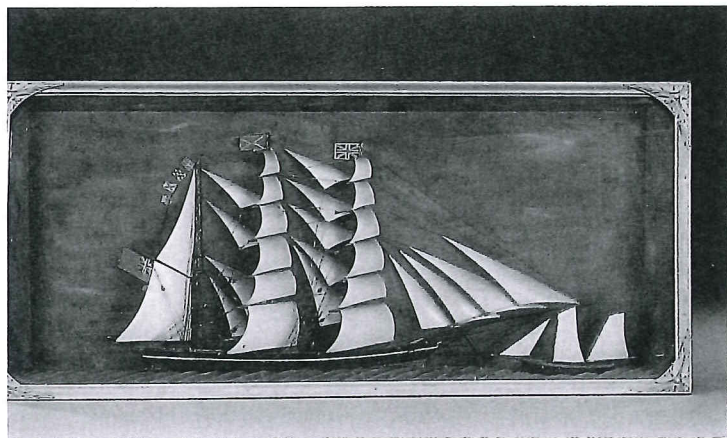
330



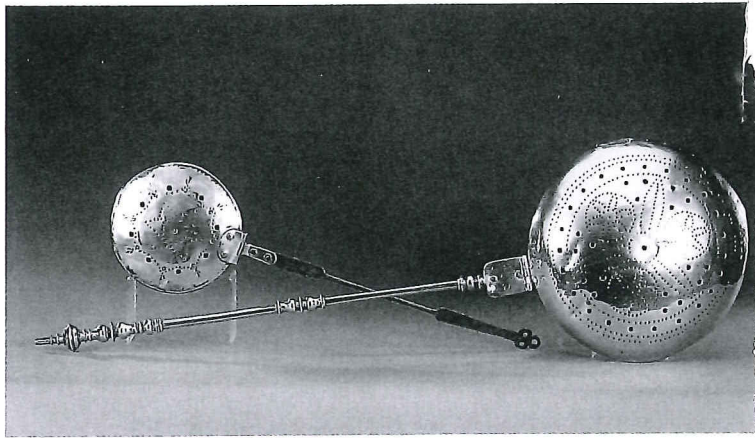
315



398



378



423

436



407 402 412



415 408 405



388 480 439



467 475 468