

GFJ

Summers Place

Sale BH7092-93

Auction: 25 November 1997

Absentee Bids

This catalogue may be referred to as BH7092-93

Fax for bids only: (01403) 785332

Auctions

Primitive Paintings
Oak & Country Furniture
Tuesday, 25 November
at 10.30 am

**Textiles, Metalwork & Works
of Art**
Wealden Gallery
Tuesday, 25 November
at 2 pm

On View

Friday 21 November 10 am to 4 pm
Saturday 22 November 9.30 am to 12.30 pm
Sunday 23 November 2 pm to 4.30 pm
Monday 24 November 10 am to 4 pm

Friday 21 November 10 am to 4 pm
Saturday 22 November 9.30 am to 12.30 pm
Sunday 23 November 2 pm to 4.30 pm
Monday 24 November 10 am to 4 pm

Catalogue

£7 at the gallery
£8 by mail
£9 overseas

Front cover: A Selection from the Sale
Back cover: Clockwise Top Left: 223, 360, 456, 413

SOTHEBY'S

SUSSEX
Summers Place, Billingshurst, West Sussex RH14 9AD
Telephone: (01403) 783933
Fax: (01403) 785153

Sotheby's London: Registered at 34-35 New Bond Street, London W1A 2AA
No. 874867

**This sale is subject to the Conditions of Business printed in this
catalogue and to reserves**



(For colour illustration see page 23) **180**
 395 **NINE ASSORTED WOOD CIRCULAR PLATTERS, most 19th Century**, including a sycamore shallow dairy bowl with reeded rim, 22.5cm; 9in; a sycamore small shallow bowl, three elm coasters or platters, a Norwegian plate with traces of red plate, and three assorted further £200-300

(For colour illustration see page 23)
 396 **A SYCAMORE BREAD PEEL, perhaps Welsh, 19th Century**, with spade shaped flattened body and central handle with ring end, 44cm; 17 1/2in £100-150

397 FOUR ASSORTED WOOD PAILS OR MEASURES, 19th Century, comprising a staved painted wood and iron banded bucket, 26cm; 10in; a pine staved pail and flat cover, and two iron banded bent wood grain measures, (4) £150-200

398 MISCELLANEOUS TREEN VESSELS, mostly Spanish, including jugs and pouring bowls in hollowed out chestnut, mortars, and other items of similar form, (12) £150-250

(For colour illustration see page 23)
 399 **A TURNED PAINTED WOOD CANDLESTICK, 18th Century**, of slender baluster form on a triangular base, 29cm; 11 1/2in; **a Russian iron banded horn vessel**, with indistinct inscriptions, 31cm; 12in; **and a wood spice cabinet in the form of a miniature chest of drawers**, (3) £200-250

400 A COLLECTION OF NINE ASSORTED PIECES OF ETHNIC TREEN, including two Indian cylindrical painted wood and iron banded pots, 14cm; 5 1/2in; a Norwegian oval painted box and cover, 22cm; 8 1/2in wide; two ladles, a bowl and three pots £100-200

401 A FRUITWOOD SHOE SNUFF BOX, English early 19th Century, with brass piqué decoration and a sliding cover, 15cm; 6in long £100-150

(For colour illustration see Front Cover)
 402 **A LARGE SYCAMORE DAIRY BOWL, 19th Century**, with a thickened rim, 49.5cm; 19 1/2in £150-200

(For colour illustration see page 23)
 403 **AN INLAID WOOD WATCH STAND IN THE FORM OF A HOUSE, early 19th Century**, of veneered wood inlaid with checker-banding, applied with bone half columns, and bone watch dial, inset with six painted windows, distressed, 38cm; 15in £300-500

404 AN ELM HATTERS BLOCK, 19th Century, 23cm; 9in £100-200

(For colour illustration see page 23)
 405 **A GEORGIAN MAHOGANY AND BRASS MECHANICAL BELLOWS, early 19th Century**, with a rounded backplate and pierced handle, drum body with brass turning wheel and brass spout, 68cm; 27in long £400-600

(For colour illustration see page 23)
 406 **TWO BENT WOOD OVAL FOOD BOXES, North German, 19th Century**, one with an orange ground painted with flowers, the cover with a print and an inscription, 48cm; 19in diam; another similar but with no inscription, 38cm; 15in; **and a Norwegian bent-wood oval box**, 19th Century, (3) £600-900

(For colour illustration see page 23)
 407 **A NORWEGIAN HORSE HEAD WOOD SKALA, late 18th/early 19th Century**, the oval shaped bowl painted with flowers, the outside painted with a band of flowers and an inscription, 36cm; 14in across handles £500-700

(For colour illustration see page 23)
 408 **A NORWEGIAN HORSE-HEAD SKALA, circa 1823**, of usual rounded form painted with flowers in the bowl and an inscription band to rim dated 1823, 36cm; 14in wide across handles £600-800

(For colour illustration see page 23)
 409 **A NORWEGIAN WOOD BOWL, circa 1775**, painted with flowers to the interior, the outer rim painted with an inscription relating to beer drinking and dated 1775, the underside impressed 'OLSF', 22cm; 8 3/4in £300-400

(For colour illustration see page 23)
 410 **A RELIEF CARVED PAINTED WOOD LADLE, Norwegian late 18th Century**, with a rococo scrolled handle and underside of bowl, 32cm; 12 1/2in £300-400

411 A BONE FIGURE, perhaps South Sea Islands, with hollowed out bone body and pin hinged arms and legs, the figure with a prominent penis £120-180

412 A JAPANNED TIN WRITING BOX, English early 19th Century, rectangular with hinged lid decorated with a border of gilt foliage, the compartmented interior with a Wedgwood blue and white Chinoiserie pen tray and individual tin boxes, 25cm; 9 3/4in wide £200-300

(For colour illustration see Back Cover)
 413 **A CARVED AND PAINTED WOOD MODEL OF A COW, late 19th/early 20th Century**, perhaps a Butchers shop sign, or from a Nativity group, 70cm; 27 1/2in long £300-500

414 A COLLECTION OF FOUR SCRIMSHAWED WHALE BONES, one engraved with a whaling scene and the inscription 'Japan Grounds 1874', 34cm; 13 1/4in; another with a ship in a harbour inscribed 'Galapagos Isles 1881', and two further with whales and flowers and figures, £800-1,200

415 A PAINTED TERRACOTTA MODEL OF A GNOME, Austrian circa 1900, kneeling on one knee fishing, 45cm; 17 1/2in £200-300

416 A SAILORWORK DOUBLE SIDED SHELLWORK VALENTINE, circa 1890, in octagonal wood folding case, one side with a photograph of a lady in a shellwork surround and with the motto 'IN LOVE REMEMBER ME', the other side with a photograph of a sailor in uniform in a shellwork surround, each side 31cm; 12in £400-500

417 A LEATHER FIRE BUCKET, circa 1800, of plain tapering form with a copper rim, 30cm; 11 3/4in; **and two leather shot carriers**, blue painted with transfer printed Royal Coats-of-Arms, (3) £200-300

418 A LEATHER FIRE BUCKET, Victorian mid 19th Century, the tapering body with a rivetted metal top rim, transfer printed with the Royal Coat-of-Arms and motto, 25cm; 10in £100-150

BRITISH & CONTINENTAL PEWTER

(For colour illustration see page 23)
 419 **A HALF PINT DOUBLE VOLUTE BALUSTER MEASURE, English late 18th Century**, the flat cover with turned incised bands and fleur-de-lys attachment, indistinct touch of Randall Moring to lip, (O.P.5794 transfer to 3294), 13cm; 5in overall £100-150

420 A GERMAN LIDDED FLAGON, by the maker J.O.B. of Goppingen, 18th Century, of tapering form with bands of reeding, the heart shaped cover with front spout and a domed top, erect ridged thumbpiece and scroll handle, touch of the maker on handle (Hintze Vol I, 1028), 29cm; 11 1/2in £200-250

(For colour illustration see page 23)
 421 **A PAIR OF PEWTER CANDLESTICKS, Portuguese 18th Century**, each with a bun shaped base and stepped foot with a squat baluster stem, 14cm; 5 1/2in £250-350

422 TWO PEWTER CHALICES, English late 18th Century, one plain with reeded top rim on a knopped stem and domed foot, 21cm; 8 1/4in; another similar with a girdle and baluster stem, **a pint tavern mug with crowned WR stamp** and Leeds town stamp, with double scroll handle, **a similar quart mug with Victorian verification stamps, and a salt**, (5) £150-200

423 A BALUSTER AND SEAL TOP PEWTER SPOON, English 17th Century, with mark of double crossed spoon in bowl, 16.5cm; 6 1/2in £120-180

424 A SQUARE BASE PEWTER CANDLESTICK, the broad base with a ridged border, the squat stem with a hexagonal knob, inscribed 'C. H.' and 'RED HORSE HOTEL STRATFORD UPON AVON', 11cm; 4 1/4in; and a French brass candlestick, 18th Century, with hexagonal beaded domed base, 23cm; 9in £150-200

odd not me

450

340

1950

1320

330

Nice

Nice lid w/ste

not me attract

Bottle not nice

not bad £14

very nice w/ste

Jan £12

Well - I was OK with lot 419 until I saw 430 + 431 - the fleur de lis on the Morning baluster is very similar to the ones on the bulbous measures. Not sure if they are OK.

No pluch.

425 A CRESTED TAPPIT HEN, late 18th Century, of typical form with bands of reeding, of Scots pint capacity, ~~£420~~ ownership initials I.P. to lip, 32cm; 12 1/2in ~~reprod. tredd~~ £300-400

~~where some DONC~~ 426 A COLLECTION OF SEVEN PLATES, English 18th Century, assorted makers including Samuel and Synt Duncombe, Swanson, and others, 23cm; 9in average; a tin bowl and a pewter dish, 37.5cm; 13 3/4in (9) ~~reprod~~ £200-300

~~It ne eme p field~~ 427 A BROAD RIMMED 'CARDINALS HAT' TYPE PEWTER CHARGER OF SEVENTEENTH CENTURY DESIGN, with unusually broad multiple cast reeded rim, 47cm; 18 1/2in £400-600

~~inside poor~~ 428 A DUTCH PEWTER BEAKER, very early 18th Century, of flared trumpet form on a domed foot, touch under base with initials in a crowned rose centred by the letter 'S', 15cm; 6in ~~reprod~~ £150-250

~~used~~ 429 A PAIR OF PLATES BY CARPENTER AND HAMBERGER, circa 1800, with cast reeded wavy edges, engraved twice with differing crowns, touch and hallmarks adverso, 24cm; 9 1/2in ~~reprod~~ £150-200

(For colour illustration see page 23) 430 AN UNUSUAL DOUBLE VOLUTE PINT BALUSTER MEASURE, circa 1826, with bulbous body with a reeded girdle, flat cover and fleur-de-lys attachment, George IV and later verification stamps, 15cm; 6in £150-200

(For colour illustration see page 23) 431 AN UNUSUAL HALF PINT DOUBLE VOLUTE MEASURE, circa 1826, similar to the previous lot, 12cm; 4 3/4in £150-250

~~no rubbed~~ 432 MISCELLANEOUS PEWTER, 18th and 19th Century, including a lidless ale or cider jug, circa 1810, 19cm; 7 1/2in; a Continental porringer with pierced ears, touch of an angel with sword and stag, a lidded pint tankard by Robert Bush of Bristol, of tulip form, thumbpiece lacking, a bulbous pint lidless measure with Durham town stamps, a gill and a half gill measure with George IV Imperial stamps, a Glasqow half gill lidded measure, (7) £200-250

~~no~~ 433 A GRADUATED SET OF LIDLESS BULBOUS MEASURES, circa 1860, from quart to 1/2 gill, Manchester verification stamps for 1860 and later verifications, together with two further similar smaller measures, and a James Dixon Britannia Metal teapot, (8) £150-200

~~Best lot~~ 434 MISCELLANEOUS PLATES AND DISHES, 18th Century and later, including a single reeded rim dish with a row of hallmarks of 'B' in shield, (O.P.5408A), 38cm; 15in; early 18th Century, another single reeded rim dish, 38cm; 15in; two reproduction dishes, four English plates by assorted makers, 18th Century, and two Dutch plates, 18th Century, (10) £250-350

435 A COLLECTION OF PLATES AND DISHES, mostly English early 18th Century, including a pair by Samuel Hancock with engraved crests and single reeded rims, 25cm; 9 3/4in; a dish with engraved armorial and crowned X adverso, 33cm; 13in; a dish by Jonas Durand with engraved crest, 29cm; 11 1/4in; and a Continental dish, (5) £250-300

BRASS, COPPER & OTHER METALWARE

(For colour illustration see page 23) 436 A PAIR OF BRASS TAPERSTICKS, English circa 1730, each with a domed circular reeded base and a baluster knopped stem, 11cm; 4 1/4in £600-800

436A A PAIR OF BRASS TRUMPET BASE CANDLESTICKS OF CHARLES II DESIGN, each with a ribbed trumpet base and mid drip tray, 20cm; 8 1/2in £500-800

437 A RARE SIGNED BRASS GEORGIAN CANDLESTICK, by George Grove, circa 1750, with a canted square base and double knopped stem, twist eject mechanism, 19cm; 7 1/2in £200-300

438 A PAIR OF GEORGIAN BRASS CANDLESTICKS, circa 1750, each with possibly associated lobed square base and double knopped hexagonal stem, both with restored joints at base/stem, 18cm; 7in £180-250

439 A PAIR OF GEORGIAN BRASS CANDLESTICKS, circa 1750, each with canted square base and double knopped stem, one with repairs around base, 18.5cm; 7 1/4in £200-300

440 TWO BRASS CANDLESTICKS, Spanish/Portugese late 17th Century, each with a large domed circular base with reeded foot rim and a vase knopped stem with cylindrical nozzle, the taller 22cm; 8 3/4in £300-400

(For colour illustration see page 23) 441 A PAIR OF GEORGIAN BRASS PETAL BASE CANDLESTICKS, circa 1750, each with double knopped baluster stem and domed base, 19.5cm; 7 3/4in £180-220

442 A PAIR OF ENGRAVED BRASS CANDLESTICKS, French 18th Century, each with a domed octagonal base and double knopped stem and octagonal nozzle, engraved overall with foliage, traces of gilding, high copper content to metal, 24cm; 9 1/2in £250-300

443 A PAIR OF SPANISH BRASS CANDLESTICKS, late 18th Century, each with a square base on peg feet and tall tapering octagonal stem with tulip shaped nozzle, 30.5cm; 12in £150-200

(For colour illustration see page 23) 444 A PAIR OF GEORGIAN BRASS PETAL BASED CANDLESTICKS, mid 18th Century, each domed base with double knopped stem and moulded nozzle with petal tops, minor restoration, 19cm; 7 1/2in £200-300

445 A PAIR OF EARLY GEORGIAN BRASS CANDLESTICKS, circa 1720, each with square base and baluster stem, damages, 16.5cm; 6 1/2in; a single Queen Anne brass candlestick, with hexagonal base and baluster stem, and a brass chafing dish with a turned wood handle, 18th Century, 21cm; 8 1/4in wide, (4) £120-180

(For colour illustration see page 23) 446 A PAIR OF GEORGIAN BRASS CANDLESTICKS, circa 1740, each with triple knopped baluster stem on a square base with canted corners, 15.5cm; 6 1/8in £250-350

447 A PAIR OF LATE GEORGIAN BRASS CANDLESTICKS, circa 1780, each with a plain tapering cylindrical stem on a square base, 21cm; 8 1/4in; and a French ebonised and gilt brass candlestick, circa 1830, (3) £150-250

448 A 'BRIGHTON BUN' TRAVELLING BRASS CANDLESTICK, circa 1830, with two dished base which screw together into a sphere and turned nozzles, 12cm; 4 3/4in diam; and a brass chamberstick, (3) £150-200

449 A PAIR OF BRASS CANDLESTICKS, Continental 19th Century, each with a domed triangular base on paw feet rising to a vase knopped hexagonal stem with a high drip pan and cylindrical nozzle, 48cm; 19in £300-400

450 A MEDIEVAL STYLE CAST BRASS 'LANDESKNECHT' FIGURAL CANDLESTICK, modelled as a standing bearded man holding aloft candle nozzles on shaped base with paw feet, 20cm; 8in; and a cast brass crucifix figure of medieval design, 16cm; 6 1/4in (2) £300-400

451 FOUR BRASS CANDLESTICKS, German and Flemish, part 16th Century, comprising three with slender multiple knopped stems with moulded nozzles pierced with ejector holes, two on domed circular bases and another on a canted square base, 16th Century and later parts with alterations, the tallest 17.5cm; 7in; and a late 17th Century candlestick with baluster stem on associated canted square base, 16cm; 6 1/4in £800-1,200

452 A PAIR OF BRASS 'CATSPA W PATENT' CANDLESTICKS, mid 19th Century, each with stop fluted cylindrical stem and beaded square base, detachable nozzles with patent candle gripping device, 13cm; 5in £100-150

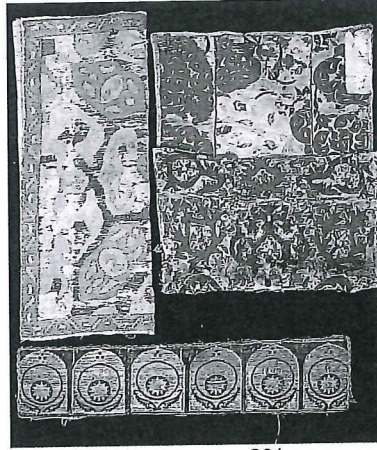
(For colour illustration see page 23) 453 A BRASS RIBBED TRUMPET BASE CANDLESTICK, Charles II circa 1670 with later restorations, with a stepped domed base, ribbed stem and mid drip tray, inner disc around drip tray and around foot appear to be replacements, 23cm; 9in together with a wood coaster base £400-600



206

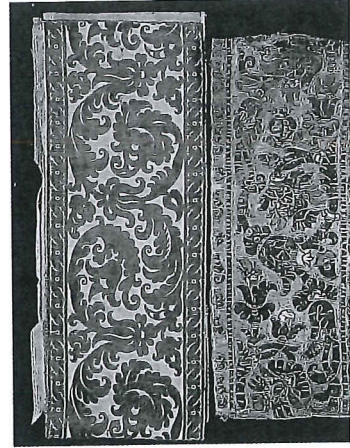


219 Matched Set of 10

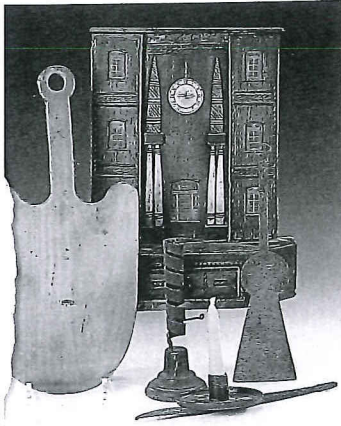


362

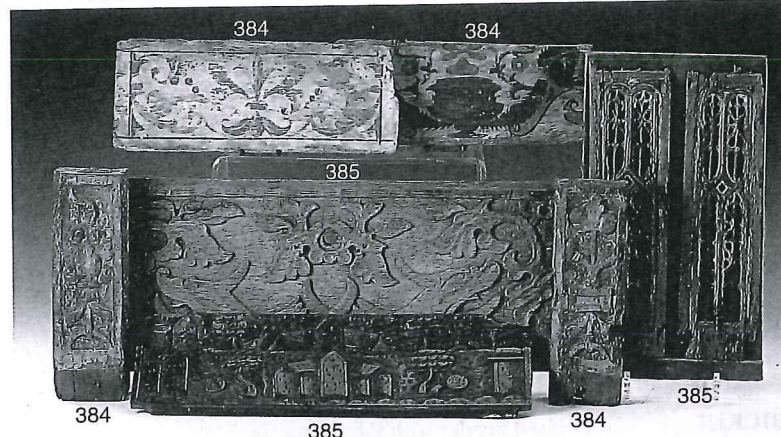
361



370



396 403 486 Part



384

384

385

384

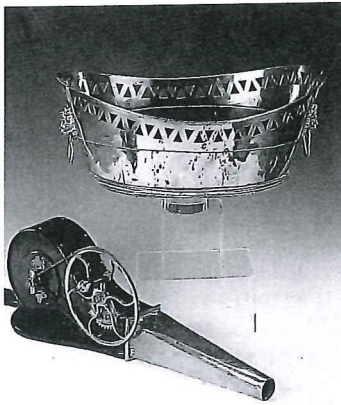
385

384

385



406



405 490



395

408

399

409

410

407

395

395



431

430

419

421



444

446

446

441

444

453

436



468

465

469