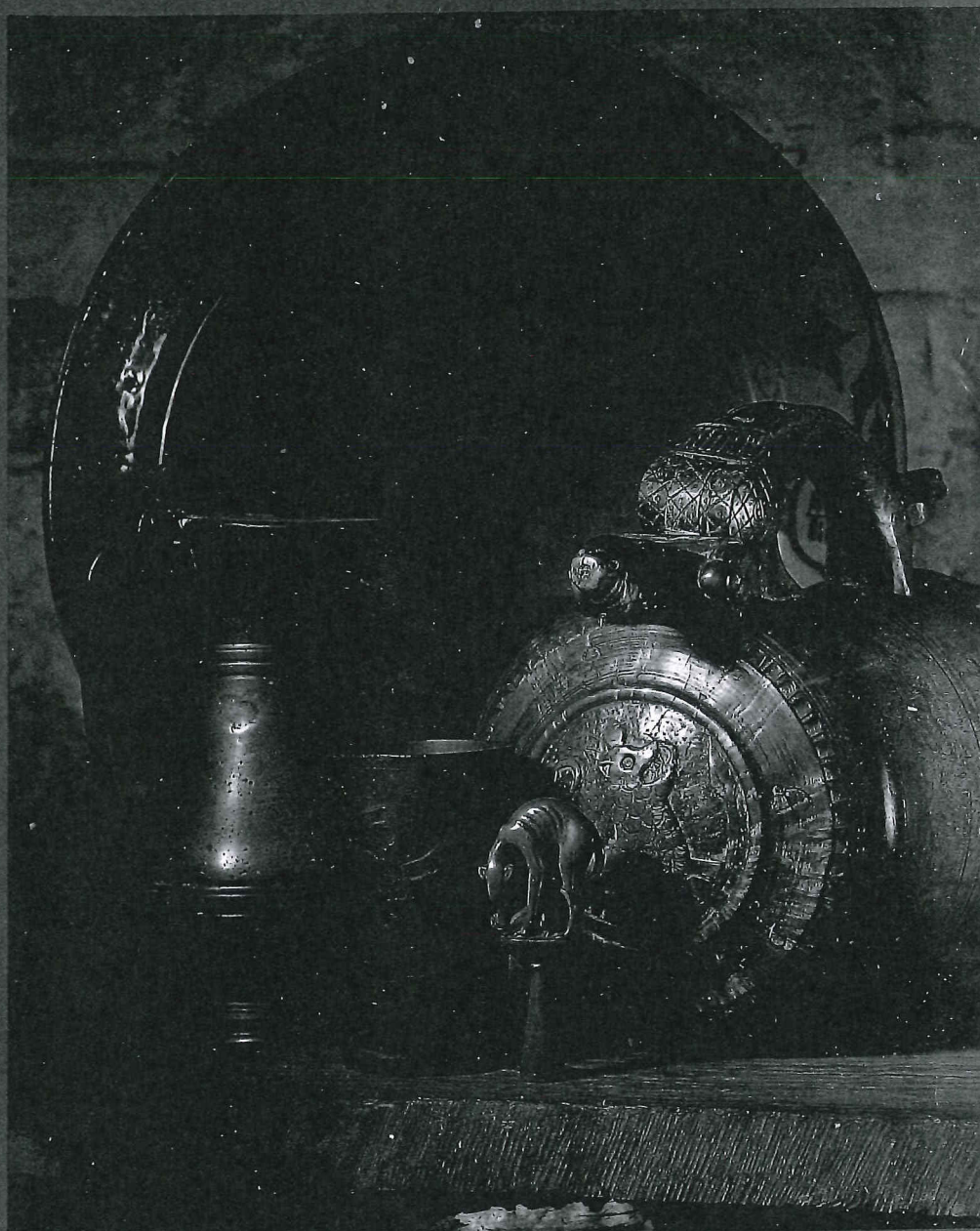


GFI

Country Furnishings & British Ceramics



SOTHEBY'S

Summers Place Tuesday 18th June & Wednesday 19th June 1996

(For colour illustration see page 46)

580A **A STONEWARE RELIEF OF A RECUMBANT LION, 19th Century**, with head raised, brick/brown surface colour, front paw broken but present, 63cm; 25in wide £300-400

580B **A PAIR OF NOVELTY PAINTED IRON DOORSTOPS, Victorian circa 1880**, one a lady with two babies, the other a gentleman with a top hat and a broly, one with registration stamp, 30cm; 11³/₄in £200-300

(For colour illustration see page 46)

580C **AN UNUSUAL PAINTED WOOD KENNEL OR CAT'S HOUSE, Victorian circa 1860**, in the form of a house with arched roof, door and windows, painted to simulate brick-work, opening at rear, 43cm; 17in high £300-400

(For colour illustration see page 46)

580D **A PAINTED WOOD DUMMY BOARD, English late 18th/19th Century**, in the form of a standing lady, 171cm; 67¹/₂in £800-1,200

(For colour illustration see page 47)

580E **A PAINTED WOOD DUMMY BOARD, early Victorian circa 1840**, in the form of a girl with a basket of flowers and cockles, 148cm; 58¹/₂in £800-1,200

CHESS SETS

581 **A JAKUES 'IN STATU QUO' TRAVELLING CHESS SET, late 19th Century**, the red and natural bone pieces fitting with a patent securing mechanism into a folding mahogany board stamped *Jakues London In Statu Quo Patent Chess Board*, 23cm; 9in square, outer leather case, good condition but some scratches to board and some minor wear to pieces £250-350

(For colour illustration see page 47)

582 **AN INDIAN IVORY CHESS SET, early 19th Century**, in green stained and natural with ornate pierced and turned pieces on domed leafy bases, the Kings 15cm; 6in (36 including two replacements) condition of green side: one pawn a modern composition copy, another pawn with broken finial, one knight with head glued back on, top section of king in need of gluing back on where joint has opened up, queen with very minor chips, one castle missing finial and the other with minor chips. White side: one pawn a replaced modern composition, three further with very minor chips or cracks, one castle with a finial missing. £500-700

(For colour illustration see page 47)

583 **A RARE SECTIONAL IVORY CHESS SET BY CALVERT, circa 1830**, with tapering turned circular pieces each on turned stem and circular foot, the white King inscribed *CALVERT MAKER 189 FLEET STR LONDON*, 12.5cm; 5in (35) £600-800

John Calvert, whose firm was at 189, Fleet Street from about 1790 to about 1840, was Master of the Worshipful Company of Turners in 1819.

Condition of white side: finial missing from queen, one pawn with restored break. red side: finial of queen missing, one bishop with a minor crack, one red pawn with chipped base foot, another red pawn lacking.

584 **A TURNED BONE CHESS SET, English circa 1840**, in red and natural with tapering barleycorn style sectional pieces, 11cm; 4¹/₂in £200-300

Condition: Red side now all red painted (not stained), two pawns with restored ball finials, white side: King with restored ball finial, one pawn with restored ball finial, both sides with a few minor chips

BRITISH & CONTINENTAL PEWTER

585 **A GERMAN PEWTER SPOUTED FLAGON, 17th Century**, of tapering cylindrical form with a jagged spout and scroll handle inscribed and dated 1667, cover missing, 24cm; 9¹/₂in; **a double volute baluster measure**, English, 18th Century, condition poor, 10.5cm; 4in; **and a reproduction pap boat**, (3) £100-200

(For colour illustration see page 47)

586 **A 'BUD' BALUSTER MEASURE, early 18th Century**, of usual form with flat ring turned cover and scroll handles, 16cm; 6¹/₄in; **and two double volute measures**, late 18th Century, each with a fleur-de-lys wedge between cover and thumbpiece, 9.5cm; 3³/₄in (3) £250-300

587 **A COMMODE PAN BY RICHARD YATES, circa 1780**, of usual cylindrical form with baluster shaped screw side handle, 41cm; 16in overall £120-180

(For colour illustration see page 47)

588 **A BROAD RIMMED DISH BY NICHOLAS DOLBEARE OF ASHBURTON, circa 1680**, the plain rim with the arms of Sir Richard Edgcumbe, the reverse with indistinct touch adverso (Peal M.P.M 5551a and addenda 1408b), restored, 32cm; 12¹/₂in £100-150

Sir Richard Edgcumbe, Earl of Mount Edgcumbe commissioned pewter for Cotehele House Cornwall.

589 **A BROAD RIMMED DISH BY THE MAKER T.B. circa 1680**, hallmarks to rim and touch adverso, (O.P.5468), condition variable, 34.5cm; 13¹/₂in £120-180

590 **A 'BURETTE DE TABLE' French late 18th Century**, of shouldered baluster form with a curved spout and domed cover with shell thumbpiece, 19cm; 7¹/₂in; **and an engraved guild badge or plate**, Continental 18th Century, in the form of a shield engraved with a key, a pair of scissors and two other motifs, 13cm; 5¹/₄in (2) £150-250

591 **A SCOTTISH LIDDED BALUSTER MEASURE, early 19th Century**, with a 'Glasgow' type domed cover and shell thumbpiece, restored thumbpiece, 11cm; 4¹/₂in; **and an English porringer**, late 17th Century, with a pierced single ear with a triad of three initials, restored, 21cm; 8¹/₄in accross £80-120

592 **A COLLECTION OF TAVERN MUGS, 19th Century**, comprising a tapering quart with 'tuck-in' foot, a matching pint, a straight sided tapering pint with crowned WR stamp and Essex stamps and tavern inscription, a similar pint with VR stamps, a half pint with brass rim, a pair of half-pint mugs, three other pieces of pewter, **and a silver tapering mug with 1905 trophy inscription**, and a napkin ring (12) £120-180

593 **A CAST IRON TEMPERANCE DISH OF MANNERIST DESIGN, late 19th Century**, in the manner of a sixteenth Century pewter original cast with a boss of Temperance in a strapwork stag and caryatid inner border and mask and hunting outer border, 38cm; 15in diam £200-300

(For colour illustration see page 47)

594 **A CRESTED TAPPIT HEN, Scottish circa 1800**, of usual shouldered form with a domed cover with knopped finial, ridged erect thumbpiece, four inscribed ownership initials to front, 30.5cm; 12in £300-400

595 **A COLLECTION OF THIRTEEN PEWTER SIDE PLATES**, comprising Continental 18th Century plates and English reproduction plates, 24cm; 9¹/₂in average £150-200

596 **A COLLECTION OF LIDLESS TAVERN MUGS, 2nd half 19th Century**, comprising four quart mugs, six pint and one half-pint mug, some spouted, assorted styles, (11) £200-250

597 **MISCELLANEOUS PEWTER AND BRITANNIA METAL, 2nd half 19th Century**, comprising two cylindrical serving dishes and covers with printed pottery interiors and hot water spouts, tea and coffee pots, eight pot bellied lidless baluster measures and other items, (a lot)
£100-200

598 **A RELIEF CAST TEMPERANCE DISH AFTER FRANÇOIS BRIOT**, the boss with the figure of Temperance, the centre with Mannerist strapwork and herms and allegories of the elements, the border with further allegorical figures and strapwork, 43.5cm; 17 1/4 in
£150-250

François Briot was a sixteenth Century Pewterer. Copies of the dish were made shortly afterwards by Caspar Enderlein and Jacob Koch of Nürnberg in the early 17th Century, and have been made ever since. This dish probably dates to circa 1900. The dish presented to the winner of the Ladies Wimbledon Lawn Tennis Championship is a silver plated electrottype version of the above. *From sale?*

(For colour illustration see Front Cover)
599 **A GUERNSEY LIDDED MEASURE BY A. CARTER, circa 1750**, the pear shaped body with bands of reeding, flat heart shaped cover with the 'Carter Arms' and initials S M and ownership initials, twin acorn thumbpiece, 18.5cm; 7 1/4 in
£200-300

600 **A PEWTER CHALICE, English or Scottish, 18th Century**, with 'U' shaped cup on a baluster knopped stem and double domed foot, 20cm; 8 in; and a **Georgian plain rimmed plate, 24cm; 9 1/2 in**
(2) £150-200

601 **FOUR PEWTER TAVERN MUGS WITH BRASS RIMS, 19th Century**, all of straight sided tapering form including a quart, *handle missing*, a pint and two half pints, *one with hole*
£150-200

602 **A PAIR OF EJECTOR CANDLESTICKS, circa 1830**, each with baluster stem and beaded circular base, 22cm; 8 3/4 in; a single similar candlestick, two plates, a chamberstick, three saucers, two mustard pots, a salt and a flask, (13)
£150-200

603 **A GROUP OF SCOTTISH AND OTHER MEASURES**, including a tappit hen, late 18th Century, with inscribed ownership initials, *modern replaced handle, domed cover and thumbpiece*, 24cm; 9 1/2 in; a reproduction tappit hen, 21cm; 8 in; a Glasgow domed lidded 1/2 gill baluster measure, circa 1830, a similar Edinburgh measure, another Edinburgh lidded gill measure by Robert Whyte, and four Scottish or North Country baluster measures, lacking lids, of 1/2 pint or gill capacity, circa 1820's, (9)
£200-300

604 **A COLLECTION OF SIXTEEN POT BELLIED LIDLESS MEASURES, Victorian late 19th Century**, comprising one quart, one pint, two half pint and the rest smaller capacities, together with a straight sided quart tavern mug, circa 1800, and two later pint tavern mugs, (19)
£200-300

605 **A LIDDED FLAGON OR BAUCHKANNE BY CHARLES MORIGGI (FILS) OF VEVEY, Swiss circa 1900**, of pear shape with bands of reeding, the heart shaped cover with touch marks (Hintze 2398) twin pomegranite thumbpiece, 30cm; 11 3/4 in
£80-120

606 **A GERMAN ROCOCO EWER OF EIGHTEENTH CENTURY DESIGN**, with helmet shaped body on a knopped stem and domed petal foot, touch under base of M.H. 1708, 26cm; 10 in; together with a **hot water urn, German, circa 1820**, of Neo-classical urn form with eagle ring side handles and domed cover, 36cm; 14 in
(2) £150-200

607 **TWO SINGLE CONTINENTAL CANDLESTICKS, 18th Century**, one with scalloped base and knopped stem, the other with gadrooned circular base and tapering cylindrical stem; a pair of later candlesticks with pierced foliate bases and two further candlesticks; together with a **set of three graduated metric lidded measures, Dutch or Flemish circa 1830**, of straight sided form, the flat covers with button finial and erect thumbpiece (9)
£180-220

608 **FOUR TWIN EARED PORRINGERS, Dutch, 19th Century**, each with a cast rose in the base with pierced ears with assorted makers stamps, 20cm; 8 in *across handles*; together with **six assorted bowls and porringers, Dutch 18th Century**, and five further German or Dutch bowls (15)
£200-300

609 **A SMALL ROCOCO COFFEE POT, German late 18th Century**, of wrythen form with front spout and gadrooned domed cover and wicker overlaid handle, 17cm; 6 3/4 in; a similar smaller pot by Ch Morriggi fils of Vevey, a gadrooned rococo oval box and cover by the same maker, 13cm; 5 in wide; and two German classical relief cast oval boxes and covers raised on four legs with paw feet, (5)
£100-150

610 **FOUR OVAL WAVY EDGED REEDED RIM DISHES, Continental 19th Century**, the largest with a Dutch touchmark of the maker V.T. 41cm; 16 1/4 in; and three further similar smaller; together with **six plates with cast or engraved decoration, Continental 19th Century**, including two with embossed Coats-of-Arms, another with huntsman in landscape, one with portrait medallions and two with wriggle-work engraving, *one damaged* (13)
£250-350

611 **A PAIR OF DISHES, English circa 1750**, each with single reeded rim, ownership triad 'KPC' and an ownership Coat-of-Arms adverso, also indistinct touch possibly John Home or John Fasson, 45.5cm; 18 in; and a **similar smaller pair**, with the same ownership and indistinct maker's marks, 37.5cm; 14 3/4 in, also a **near set of six plates**, circa 1750, each with plain rim and the touch of John Fasson (Cot O.P. 1636) or John Home, 23cm; 9 in, together with three tavern mugs, (13)
£400-600

612 **A SMALL WRIGGLED WORK PEAR SHAPED COFFEE POT, Dutch circa 1800**, with front spout and domed cover with loop handle, engraved tulip decoration, 18cm; 7 in; and three Continental lidded spouted measures or cruets, (4)
£150-200

613 **A COLLECTION OF FOUR SECTIONAL JELLY MOULDS, circa 1868**, each with tapering cylindrical stem, (one fluted), with circular bases stamped with Registry marks for 1868, and fruit cluster tops, *the largest* 20cm; 8 in; a tapering cylindrical tobacco jar, an engraved heart shaped snuff box and a circular box and cover, (7)
£150-200

614 **TWO SCOTTISH LIDDED BALUSTER GILL MEASURES, circa 1830**, one of Glasgow type with shell thumbpiece, the other similar with makers stamp A. Ramage Edinburgh under cover and with flattened ball thumbpiece, 10cm; 4 in; a pair of 1/2 pint tapering beakers, English circa 1840, two Irish lidless baluster measures, 12.5cm; 5 in and seven small lidless baluster measures, (13)
£150-200

615 **A TRIPLE REEDED RIM CHARGER, English circa 1690**, hallmarks of the maker T.R. to rim, *some holes and damage*, 46cm; 18 1/4 in; an engraved Continental plate decorated with a figure preparing for a feast and inscribed 'IONNE ROMPVE 1759', *drilled suspension holes*, 31.5cm; 12 1/4 in diam; an English eighteenth Century dish, 42cm; 16 1/2 in; and a Continental dish and a plate, (5)
£350-450

BRASS AND COPPER

616 **A BRASS CHANDELIER, Dutch 19th Century**, with a ball and baluster stem with a knopped pendant finial and loop top supporting six 'S' scrolled branches ending in wide drip pans and turned nozzles, 46cm; 18 in
£300-400

(For colour illustration see page 47)
617 **A PAIR OF CAST BRASS ALTARSTICKS, Flemish circa 1700**, each with a triangular base cast with female masks on claw and ball feet rising to a vase knopped stem with a dish circular drip tray, each with crowned R makers' stamp, *prickets lacking now with tin nozzles, one foot replaced, other feet restored*, 35cm; 13 3/4 in
£400-500



580E



582

583



624

617

624



622

627



633

594

588

586(3)

636



630

625

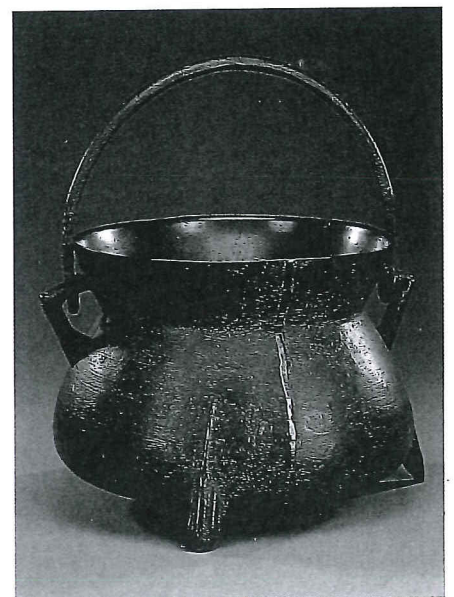
630



673

685

683



684