

GFF

# Treen and Works of Art, Furniture, Textiles, Metalwork, British Pottery and Porcelain

**Sale B09792  
and B09793**

*Auction:* Wednesday 22 September 1999 at 10 am and 2 pm  
Thursday 23 September 1999 at 10.30 am and 1.30 pm

## **Absentee Bids**

This catalogue may be referred to as B09792 and B09793  
For bids only: Tel (01403) 833656 Fax (01403) 833696

## **Catalogue**

£10 at the gallery, £11 by mail,  
£12 overseas

## **Principal Offices Worldwide**

London (20) 7293 5000	Paris 33 (1) 53 05 53 05
New York (212) 606 7000	Geneva 41 (22) 908 4800
Los Angeles (310) 274-0340	Tokyo 81 (3) 3230 2755
Chicago (312) 670 0010	Hong Kong (852) 2 524 8121

# **SOTHEBY'S**

Summers Place, Billingshurst, West Sussex RH14 9AD

**378 Three silver commemorative lace bobbins**

inscribed 'Ann and Mark', 'ER Silver Wedding 1947-1972' and 'The Queen's silver jubilee 1977', each with silver spangles, together with a collection of 50 turned wood bobbins, the majority with spangles (53)

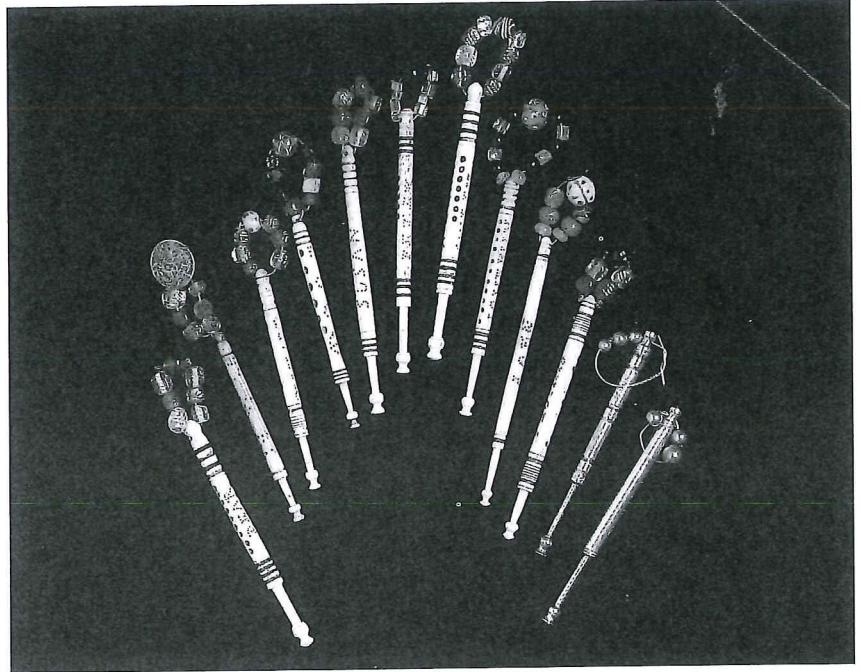
£150-200

**379 A collection of turned bone bobbins**

**English, 19th century**

comprising one with a message 'Love by the ring', nine named bobbins, *Susan, Sally, William, John, Charles, Peter, Thomas, Lucy and Richard*, twenty two turned bone bobbins, the majority with spangles, together with fifty wood bobbins (82)

£180-220



378 (part)

379 (part)

**380 A collection turned bone bobbins**

**English, 19th century**

comprising one with the message 'Don't be love cruel', nine named bobbins, *'Dear Edwin, Caroline, Charles, James, Louisa, Dear Father*, three with indistinct names, together with twenty two turned bone bobbins with spangles and fifty turned wood bobbins (82)

£180-220

**381 A collection of bobbins**

**English, 19th century**

comprising one 'hanging' bobbin 'W WORSLEY HUNG 1868', nine named bobbins *'Tom, Joel, Lucy, Ann Chaplin, Jane, Sally, Sally'* and two with indistinct names, together with twenty two turned bone bobbins and forty six turned wood bobbins, the majority of spangles (78)

£180-220

**382 A verdure tapestry fragment**

**Louis XV, mid 18th century**  
woven with a wooded river landscape with distant chateau, extensive minor repairs and later selvaige

188 by 125cm; 6ft 2in by 4ft 1½in

‡ £800-1,200

**383 A machine made Jacquard tapestry panel**

**Continental, late 19th century**

depicting a crowded medieval market scene in Ghent with the spires of the city churches against the skyline, within an egg and dart border, 128 by 246cm; 4ft 3in by 8ft 1in

£150-200

**384 A machine made Jacquard tapestry panel**

**French, late 19th century**

woven with a arcadian scene in the style of Watteau, figures in a landscape with fountain and trees in the background, 125 by 2092

£80-100

**385 A machine woven silk picture**

**Lamy & Giraud of Lyon, 1867**  
depicting the Virgin and child in a Gothic arcaded surround within a floral swag, signed *A. Lamy & A. Giraud. Lyon 1867. Tissé par J. Burel.* framed and glazed  
130 by 107cm., 51 by 42in

£300-500

**386 A paisley pattern shawl**

**mid 19th century**

of usual large rectangular form, woven with panels of elongated scrolling pine cones in reds, greens, blues and gold on a silk warp, 345 by 168cm; 11ft 4in by 5ft 6in

£200-300

**387 A silk embroidered Turkish long sash**

**early 19th century**

the fine linen worked a repeat scrolling floral design in blue and purple coloured floss silks with cream silk drawn threadwork panels, 260 by 26cm; 8ft 6in by 10½in

£120-150

**BRITISH AND CONTINENTAL PEWTER**

**388 A triple reeded rim dish**

**circa 1700**  
hallmarks to rim and touch adverso Barratt ? of London to reverse, 35cm., 13½in; and five plates including a narrow rim and single reeded rims by assorted makers, most with ownership triads on reverse, worn condition (6)

£300-400





389

390



398

- 389 A pewter passover plate Dutch, 18th century**  
engraved with an eight point star, other motifs and a Hebrew inscription  
31.5cm., 12½in  
£400-600
- 390 A pewter passover plate with 19th century engraving**  
with a nine point star and nine circles containing Hebrew inscriptions  
32cm., 12½in  
£200-300
- 391 A pewter plate with a Hebrew inscription**  
**the plate Continental, dated 1791**  
with wavy rim with a possibly later inscription, the centre with an engraved 'chalice', the reverse with ownership initials and date 1791  
32cm., 12½in  
£100-200
- 392 A pewter tobacco jar and cover**  
**circa 1840**  
a pewter capstan inkwell and a bronze classical stand (3)  
£100-150
- 393 A single reeded rim charger by Edward Leapidge of London**  
**circa 1730**  
touch mark and triad to reverse  
51cm., 20in  
£200-300
- 394 Two pairs of pewter ejector candlesticks**  
**circa 1830**  
with beaded rim and baluster stem  
*the taller 23cm., 9in*  
£300-400
- 395 Miscellaneous Pewter**  
**19th century**  
including three quart tavern mugs, four pint and three half pint tavern mugs, a lidded cast quart tankard by James Yates with a row of hallmarks of Ingram & Hunt? and an engraved armorial to drum, six lidless baluster measures, a tobacco jar and cover, a chalice, two peppers and two mustard pots (23)  
£300-400
- 396 A treasury type inkwell**  
**early 19th century**  
rectangular with double hinged flap, one side revealing twin wells, on ball feet  
20cm., 8in wide  
£80-120
- 397 Miscellaneous pewter**  
**18th/19th century**  
comprising a pair of engine turned pint tavern mugs of straight sided tapering form, 19th century, a pint capacity lidded bulbous ale jug, circa 1830, a pair of plates inscribed C Thellusson to the rim and a further crested plate (6)  
£200-300
- 398 A wriggled work plate by Thomas Lanyon of Bristol**  
**early 18th century**  
with a single reeded rim, the well decorated with three tulips issuing from a vase, touch and hallmarks adverso; **and a plate** inscribed *Iohn MAY H.C.S.M.* the reverse with an engraved anchor, early 18th century (2)  
22cm., 8½in  
£450-600
- 399 Miscellaneous pewter**  
**19th century**  
comprising three pint tavern mugs, a half pint mug, four lidless baluster measures, a plate, a hot water plate and a Continental bowl (11)  
£200-250
- 400 A collection of crested plates and dishes**  
**early 18th century**  
comprising a set of four single reeded rim plates by Anthony James of London with touch and hallmarks adverso, 25cm., 9¾in; a similar dish by the same maker; a dish and a plate by Mark Cripps and a further dish all with the same crest (8)  
£300-500



408

406

403



410

**401 Miscellaneous measures and vessels**  
including pot bellied lidless measures, peppers, tavern mugs, two small Continental lidded measures, an octagonal salt, and a large collection of Dutch spoons, etc  
£200-300

**402 Miscellaneous dishes and plates**  
including two single reeded rim plates, one by Samuel Smith, two Continental embossed plates, one by Compton, a pair by the maker S.H. circa 1790, two octagonal beaded crested dishes, etc (10)  
£200-300

**403 A Jersey lidded quart flagon by John de St.Croix mid 18th century**  
heart shaped cover and twin acorn thumbpiece, ownership initials I A to handle and touch under cover, no verification marks to rim  
21cm., 8½in  
£250-350

**404 Two single reeded rim dishes early 18th century**  
one by Thomas Spencer with touch adverso and ownership initials to rim, the other touch adverso  
38cm., 15in  
£180-220

**405 Two dishes by York makers 18th century**  
one by Arthur Wharton with touch and hallmarks adverso and ownership initials to rim, the other by L Terry with single reeded rim  
42cm., 16½in  
£200-250

**406 A triple reeded rim charger John French, circa 1700**  
with hallmarks to rim and ownership initials adverso  
46cm., 18in  
£300-400

**407 A triple reeded rim dish Richard Mastead, circa 1670**  
hallmarks and ownership triad to rim, touch adverso  
42cm., 16½in  
£200-300

**408 A pewter Stegkanne or spouted flagon, by Josué Boyve of Bern Swiss, circa 1700**  
engraved with figures, cartouches and wrigglework bandings, the body of typical pear-shaped form with an 'arm' strut from the collar to the hexagonal spout, the lid with an erect thumbpiece, engraving possibly later, finial possibly lacking  
31cm., 12¼in high  
£1,000-1,500

**409 A pewter serving dish by Benjamin Blackwell circa 1740**  
the plain flat top with a reeded rim to the underside on three large ball feet, touch to underside (O.P.437A)  
43cm., 17in  
£200-300

**410 Three similar brass mounted tankards Johann Christian Gottespfennig and Jochim Adam Hecht of Rostock, late 18th century**  
each of cylindrical form with domed covers and brass domed finilas and ball handles raised on brass claw and ball feet, each engraved with Guild details and the names of Deputies dated 1783, 1787 and 1791 respectively each with touch to handle  
the tallest 25cm., 10in  
Ω £1,500-2,000

**411 A tureen and cover German, second half 18th century**  
of rococo swirled oval form with loop side handles on four foliate cast feet with urn finial, together with a matching rococo stand  
the stand 44cm., 17in wide  
Ω £300-500





416

414

415

**412 A near large pair of Roerkannes  
Jochim Daniel Gottespennig of  
Rostock, late 18th century**

of usual tapering form with domed covers and ball thumbpieces, each engraved with ownership details, ships and other motifs and dated 1793, makers touch dated 1788 on handles  
36cm., 14in

Ω £1,400-1,800

**413 An engraved flagon of sixteenth  
century design  
by the maker Weygang, circa  
1900**

with faceted foliate engraved panels and ownership inscriptions dated 1674  
29cm., 11½in

An identical flagon is illustrated in *ZINN NACH ALTEM VORBILD, Beitrag der familie Weygang* by Reto Niggli

Ω £200-300

**414 A wriggled work engraved  
hexagonal flask**

German, 18th century  
each side engraved with foliage,  
screw top and ring handle with  
touch to cover  
23cm., 9in

Ω £300-500

**415 A large cylindrical flask  
Johann Ludwig Kunst of  
Harburg, late 18th century**

engraved with flowers and  
inscriptions dated 1812 and 1847,  
screw top with ring handle, makers  
touch I.L.K. under base  
36cm., 14in

Ω £200-300

**416 A large hexagonal flask  
German, 18th century**

each side engraved with ownership  
inscriptions, a crown and dated  
1768, screw top with loop handle  
32cm., 12½in

Ω £250-350

**417 Two South German spouted  
stütze**

late 18th century  
of tapering cylindrical form with  
beak spouts and ball thumbpieces  
and heart shaped covers, with  
engraved decoration and  
ownership inscriptions, one dated  
1780 the other 1805  
31cm., 12¼in

Ω £250-400

**418 A porringer  
Continental, 18th century**

with pierced ears and touch on one  
one tip broken and a spouted lidded  
milk jug (2)  
20cm., 8in diam

Ω £150-250

**419 Three pewter flasks  
Continental, 19th century**

including a hexagonal flask dated  
1837 with wriggled work  
engraving, a tapering spouted flask  
with ring screw top dated 1804 and  
a cylindrical flask with hand and  
ring screw top (2)  
the latter 27cm., 10½in

Ω £300-400



412

413

412

- 420 Four pewter spoons**  
**Dutch, late 17th century**  
 including a trifold by the maker B B H with an angel touch and rat tail strengthener, 20cm., 8in; two further treflids and a stump end  
 £300-400

BRASS, COPPER AND METALWARE

- 421 A pair of brass five light chandeliers**  
**of Dutch 18th century design**  
 each with a ball and baluster stem supporting scrolled branches ending in dished drip trays and tulip shaped nozzles  
 42cm, 16½in (2)  
 † £400-600
- 422 A set of eight brass twin branch wall lights**  
*ensuite with the previous lot*  
 38cm, 15in wide (8)  
 † £400-600
- 423 A tinned metal six branch chandelier**  
**Continental, mid 18th century**  
 the stepped spherical body with a pineapple pendant finial supporting associated 'S' scrolled branches ending in dished drip trays, hung by three chains, inscribed '1759, I.H.S.Z. P.KB'  
 120cm, 47in high overall  
 £400-600
- 424 A near pair of brass candlesticks**  
**early 18th century**  
 each with canted square tapering stem on a dished stepped canted square base  
 22cm., 8¾in  
 £200-300
- 425 Two pairs of pierced brass candlesticks**  
**French, late 19th century**  
 together with a pair of Victorian brass candlesticks and 14 other miniature candlesticks and tapersticks; and a collection of six copper hunting horns, 19th century (26)  
 £200-300

- 426 A gilt brass Victorian Gothic chandelier**  
**circa 1880**  
 the cylindrical frame with enamel painted cast base and a pierced rim supporting twelve candle holders, hung by three chains  
 135cm., 4ft 5in high overall  
 £400-600

- 427 A pak tong chamberstick**  
**George III, circa 1810**  
 the circular sconce above a bulbous knopped stem with push ejector above a scissor aperture, the dished circular drip tray with a scroll handle  
 11.5cm high by 16.5cm diam.; 4½in by 6½in  
 Pak tong is a relatively uncommon alloy consisting of copper, zinc and some nickel, and was used to make a variety of domestic items because of its great similarity to silver.  
 £250-350

- 428 A brass Heemskirk candlestick**  
**Dutch, 17th century**  
 with a vase knopped stem and dished mid drip tray and domed base  
 19cm., 7½in  
 £150-250

- 429 A pair of Georgian brass ejector candlesticks**  
**1st half 18th century**  
 each with knopped cylindrical stem with side ejector on domed circular base  
 18cm., 7in  
 £400-600

- 430 A brass chandelier**  
**Dutch, late 19th century**  
 the bulbous stem supporting two graduated tiers of six scrolling candle arms, now converted to electricity  
 79cm; 31in high approx  
 £300-400



423



426



429

428

429

427