

GFD

British Ceramics, Furniture, Architectural Items, Treen, Works of Art, Textiles and Metalwork

Sale B00120

Auction: Tuesday 29 February 2000 at 10.30 am

Absentee Bids

This catalogue may be referred to as B00120

For bids only: Tel (01403) 833656 Fax (01403) 833696

Catalogue

£10 at the gallery, £11 by mail,
£12 overseas

Principal Offices Worldwide

London (20) 7293 5000

New York (212) 606 7000

Los Angeles (310) 274-0340

Chicago (312) 670 0010

Paris 33 (1) 53 05 53 05

Geneva 41 (22) 908 4800

Tokyo 81 (3) 3230 2755

Hong Kong (852) 2 524 8121

SOTHEBY'S

Summers Place, Billingshurst, West Sussex RH14 9AD



378

378 A collection of sixteen miniature terracotta figures of Indian men and women

late 19th century
including fourteen men, in various poses and in traditional dress, faults, each approx 19cm, 7½in high; together with an ebonised display cabinet, 19th century, the glazes door enclosing a shelf and flanked by fluted pilasters
60cm high by 94cm wide; 23½in by 37in

£500-800

379 A carved wood 'Goose-wing' knitting sheath

early 19th century
inscribed 'H.W. and with a turned handle, 28cm., 11in long; together with three coquilla nut articles, 19th century, including a nutmeg grater, pierced egg flask and a baluster castor and a straw-work oval flask, circa 1800, 10cm., 4ins (5)

£450-550

380 An ebony casket

Portuguese, late 17th century
the sides and lid intricately carved with tulips and flowerheads amidst interlacing foliate scrollwork, the hinged lid above the front with a drawer, on four bun feet, locks and hinges replaced
33cm., 13in. wide

£1,000-1,500

381 A lignum vitae goblet

19th century
the cylindrical body with fluted bandings, on a knopped turned stem and large spreading circular foot
19cm., 7½in high

£200-300

382 A pair of oak and brass bound buckets

1st half 19th century
each with a swing handle above tapering sides, one handle restored, the other lacking its base
26cm high by 33cm diam.; 10½in by 31½in

£300-500

383 A scrimshaw whales tooth

mid 19th century
one side engraved with a long tailed bird on a branch, the other with a scene of three women above another scene depicting two women with potted plants and a watering can
14cm., 5½in high

£200-300

384 A pair of straw work and paper pictures, depicting the Menai Straits and Conway Castle Caernarfonshire, mid 19th century

in unglazed maple frames, faults
67cm wide, 23in

£300-500

385 A child's castle Diorama

Victorian, mid 19th century
in a rectangular ebonised case applied with embossed wallpaper, filled with a castle façade, river, gate-houses, figures and soldiers and a hunt, all in various media
48cm high by 56cm wide, 19in by 22in

£300-400

386 Three small mannequin figures

French, late 19th century
each with carved wood hands and boots and upholstered linen bodies, together with a tailors dummy with body applied with decalomania prints on a cast iron stand, and a violin and a bow (6)

£300-500

387 A stone corbel

English 13th century
carved with a human head with bulging eyes, hair combed to the sides from the centre, 15cm high

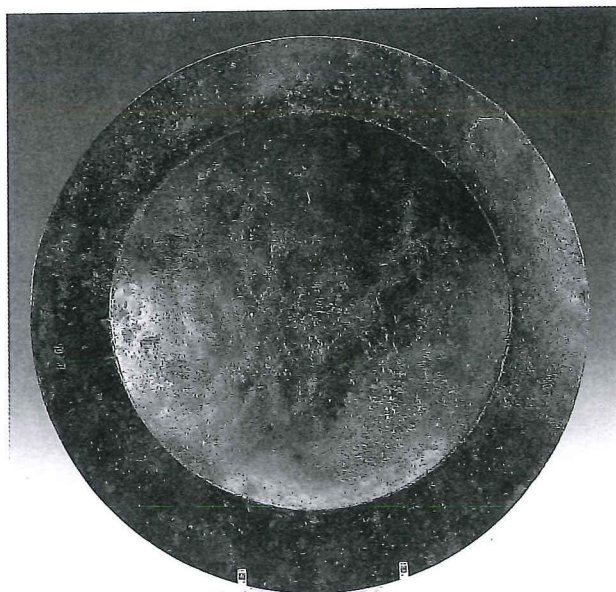
£400-600

PEWTER

388 A pair of single reeded rim deep dishes

Jonathan Ingles, early 18th century
touch marks adverso
33.5cm: 33½in

£250-300



393

**389 Seven assorted plates
late 18th century**

various makers including Ash & Hutton of Bristol, John Duncombe etc

23cm., 9in average

£200-300

**390 Two Edinburgh measures
19th century**

one by Robert Whyte of half pint capacity, *lacking cover*, another similar of squatter form, *lacking cover*, two others and a flask

£200-300

**391 A bud baluster measure
English, circa 1700**

with bands of turned decoration to body and cover, no apparant marks

15cm., 6in

£250-350

**392 A quart lidded tankard by
Samuel Cox
early 19th century**

with stepped domed cover and open chairback thumbpiece and a 'U' shaped body and row of hallmarks to top rim, double scroll handle

20cm., 8in

£250-350

7400



392

391

414

**394 Two miniature pieces of
Medieval pewter**

comprising a candlestick, late 13th/early 14th century, raised on a disc with stamped lettering representing two of the three Kings 'MLAHIORB*IASPAR?' on three fluted legs and spade feet, 5.5cm., 2in across; and a spoon with relief raised linear decoration to both sides of bowl and handle, 13th/early 14th century, 9cm., 3½in

Literature: Geoff Egan: *The Medieval Household, Daily Living c.1150-1450*, Museum of London, pages 137-139, Cat No. 375 for a similar candlestick and pages 246-248 fig 194 for the spoon. See also *Pewter, A celebration of the craft*, Museum of London fig 20, p. 55 for another candlestick and J Pewter Soc Autumn 1987 for discussion. The spoon in this lot has similarities in the raised linear decoration to a Medieval mirror case fig 10 and a pilgrim ampulla, fig 140 in *A celebration of the craft*.

£400-600

**395 A slip top pewter spoon
English, circa 1600**

the bowl with stamped initials 'TS' and touch of T.A. with crossed swords 16cm., 10in

for touch see Ronald Homer: *Five centuries of base metal spoons*, page 56 five from left on seventh row of the slip top spoon section

£200-300



394

**393 A Medieval pewter dish
English, second half 15th
century**

with sloping rounded sides and broad border, ownership initials 'r m' in Lombardic lettering struck on rim, *some old damages and blotchy patination with traces of natures gilding*

35cm., 13½in

It is more common to find plates from the 15th century with Lombardic lettering as opposed to dishes, see for example the Sandy Law sale at Phillips of Chester (various lots) and Sothebys Billingshurst 17th March 1998 lot 340 & 23rd June 1999 lot 525. See also *Pewter: A Handbook of selected Tudor and Stuart pieces*, The Pewter Society 1981, page 14 and 'Pewter, a celebration of the craft 1200-1700' page 57, fig 28

£1,500-2,000



397

401

403

- 396 Three pewter baluster measures** comprising a Scottish flat lidded pint measure from Leith, early 19th century; a Glasgow domed lidded gill measure with shell thumbpiece, early 19th century, and a James yates lidless baluster pint measure
£200-300
- 397 A small pewter lidded tankard**
Austrian, early 18th century
tapering cylindrical with ridged erect thumbpiece, the body embossed with ovals and engraved with foliage, three legs, touch on handle
10.5cm., 4½in
See Peter Hornsby: Pewter and the Western World p.268 fig 902 for another similar from Salzburg
£400-600
- 398 A pewter pot**
North West Europe, 17th century
of squat pear shape with a plain loop handle, raised relief disc in base, restored,
14cm., in 7in
£400-500
- 399 A relief decorated dish in the manner of Francois Briot, late 16th/early 17th century**
cast with Mannerist masks and stylised strapwork and scrolls, damages
45cm., 17¾in
£200-300
- 400 A Swiss pewter flagon**
Nicolas Paul of Genf, 18th century
of shouldered form with heart shaped cover with a sheep head finial and twin pomegranite thumbpiece
29cm., 11½in
touch Hintze 2071
£400-500
- 401 An unusual lidded tankard**
South German, 18th century
of spherical form on a waisted socle and circular foot, the domed cover with a lamb finial, plume thumbpiece, touch inside cover
16cm., 10in
£300-400
- 402 A pair of pewter rococo candlesticks**
German, late 18th century
with swirled dish base and squat swirled stem, 10cm., 4in; and a **pewter inkwell, Dutch, 18th century** with sand pot to one side and drawer below (3)
£200-300
- 403 A Hanse Kanne**
North West Europe, 15th/16th century
of squat pear shape with heart shape cover and shell thumbpiece, excavated condition
17cm., 6¾in
£300-500
- 404 A pewter coffee or water urn**
German, 18th century
the faceted pear shaped body on three scroll legs with foliate scrolled side handles mounted with grotesque masks
34cm., 13½in
£1,000-1,500
- 405 A pewter pichet**
French, 18th century
of pear shaped form and plain loop handle, no apparant marks
14cm., 5½in
£150-200
- 406 A collection of pewter**
Mostly 19th century
including two treasury type inkwells with double hinged flap tops, two spoons, salts, mugs and measures including a Glasgow gill baluster measure, lacking lid, and a lidded pint mug, a chamberpot, a German crusic oil lamp, a rococo style pot, etc (a lot)
£400-500
- 407 A triple reeded rim dish by the maker C.T. circa 1690**
hallmarks to rim and touch adverso (O.P.5968), together with a **triple reeded rim dish, circa 1690**, hallmarks to front and indistinct touch adverso, minor damages, and **two similar single reeded rim dishes, early 18th century**, with ownership triads and indistinct touchmarks, all now silvered all 42cm, 16½in diameter (4)
£400-600
- 408 A Normandy flagon**
19th century
of usual shouldered form with heart shaped cover and twin acorn thumbpiece, 27cm., 10½in; and a **Dutch flagon, late 19th century**, with domed cover and erect thumbpiece, 21.5cm., 8½in
£200-300
- 409 A rectangular pewter wall cistern**
German, mid 18th century
engraved with a marriage armorial and with the date 1757, cast handles and spout, the lid also decorated, 25.5cm., 10in high
£150-250

- 410 A pewter relief teller of Noah**
German, 17th/ 18th century
 'the central roundel depicting Noah before God, dated 1619, the rim with four scenes of Adam and Eve, with a cast Nuremberg makers touch, 17.5cm, 7in diam.; together with another example depicting Ferdinand III after Paulus öham, the central roundel and surrounding six panels depicting Ferdinand on horseback, 18.5cm, 7½in diam.,
 (2)

£300-500

- 411 Three pewter flasks**
Continental, 19th century
 including a hexagonal flask dated 1837 with wriggled work engraving, a tapering spouted flask with ring screw top dated 1804 and a cylindrical flask with hand and ring screw top (2)
 the latter 27cm., 10½in

Ω £200-300

- 412 A porringer**
Continental, 18th century
 with pierced ears and touch on one *one tip broken* and a spouted lidded milk jug (2)
 20cm., 8in diam

Ω £100-150

- 413 A tureen and cover**
German, second half 18th century
 of rococo swirled oval form with loop side handles on four foliate cast feet with urn finial, together with a matching rococo stand
 the stand 44cm., 17in wide

Ω £150-200

- 414 A wriggled work engraved hexagonal flask**
German, 18th century
 each side engraved with foliage, screw top and ring handle with touch to cover
 23cm., 9in

Ω £200-250

Illustrated p67



419

- 415 A large hexagonal flask**
German, 18th century
 each side engraved with ownership inscriptions, a crown and dated 1768, screw top with loop handle
 32cm., 12½in

Ω £150-200

- 416 A pewter lidded flagon**
German, late 18th/early 19th century
 of tapering form with two bands of reeding and engraved foliate decoration, fluted urn thumbpiece
 30cm., 12in

£400-600

BRASS & COPPER

- 417 A brass chandelier**
Dutch, 19th century
 the ball and vase baluster stem with two tiers of 'S' scrolled branches ending in wide drip trays and turned nozzles, pegged branches', artificial dark patina
 61cm., 24in

£700-1,000

- 418 A Gothic style brass chandelier**
German, 19th century
 the multi knopped stem with a bearded wild man finial and animal mask base supporting a tier of three peg-in scrolled branches with shell drip trays, and an upper tier of decorative scrolls
 43cm., 17ins

£400-600

- 419 A brass chandelier**
Dutch, 19th century
 the ball and vase stem supporting two tiers of six 'dolphin' scrolled arms ending in wide drip trays and turned nozzles, one peg replaced
 64cm., 25in

£600-900

- 420 A patinated brass chandelier**
Continental, 19th century
 the ball and vase stem with a projecting ring which support eight scrolled branches with wide drip trays and turned nozzles
 56cm., 22in

£250-350