

GFB

**Good British Pottery**  
Wednesday 14 September 2011 at 12pm  
Chester

**Oak Furniture, Pewter & Related Works of Art**  
Thursday 15 September 2011 at 10am  
Chester

**Bonhams**

New House  
150 Christleton Road  
Chester CH3 5TD  
bonhams.com

**Viewing**

Friday 9 September  
10am to 4pm  
Sunday 11 September  
10am to 2pm  
Monday 12 September  
10am to 4pm  
Tuesday 13 September  
10am to 4pm  
Wednesday 14 September  
10am to 4pm

**Bids**

+44 (0) 20 7447 7448  
+44 (0) 20 7447 7401 fax  
To bid via the internet  
please visit [www.bonhams.com](http://www.bonhams.com)

Please note that bids should be submitted no later than 4pm on the day before the sale.

New bidders must also provide proof of identity when submitting bids. Failure to do this may result in your bids not being processed.

**Sale Number:** 18924 & 18926

**Catalogue:** £15 (£18 by post)

Bonhams 1793 Limited  
Registered No. 4326560  
Registered Office: Montpellier Galleries  
Montpelier Street,  
London SW7 1HH  
+44 (0) 20 7393 3900  
+44 (0) 20 7393 3905 fax

**Bonhams 1793 Ltd Directors**  
Robert Brooks Chairman, Colin Sheaf Deputy Chairman,  
Malcolm Barber Group Managing Director,  
Matthew Girling CEO UK and Europe,  
Geoffrey Davies, Jonathan Horwich, James Knight,  
Patrick Meade, Caroline Oliphant, Hugh Watchorn.

**Bonhams UK Ltd Directors**  
Colin Sheaf Chairman, Jonathan Baddeley, Antony Bennett,  
Matthew Bradbury, Harvey Cammell, Simon Cottle, Paul  
Davidson, Jean Ghika, Charles Graham-Campbell, Miranda  
Grant, Robin Hereford, Mark Jones, Charles Lanning, Camilla  
Lombardi, Paul Maudsley,  
Gordon McFarlan, Andrew McKenzie, Simon Mitchell,  
Jeff Muse, Mike Neill, Charlie O'Brien, David Park,

Giles Peppiatt, Peter Rees, Julian Roup, Iain Rushbrook, John Sandon, Tim Schofield, Veronique Scorer, James Stratton, Roger Tappin, Shahin Virani, David Williams, Michael Wynell-Mayow.

**Bonhams Advisory Board.**  
Tony Adams, Robert Bensoussan, Frank Cohen, Pierre Malleveys, Moira Stuart, Harold Tillman, Lucia Van der Post.

**Enquiries**

Ceramics  
Adam Johns  
+44 (0) 1244 353129  
adam.johns@bonhams.com

Furniture, Pewter  
David Houlston  
+44 (0) 1244 353119  
david.houlston@bonhams.com

Works of Art  
Megan Wheeler  
+44 (0) 1244 353127  
megan.wheeler@bonhams.com

**Customer Services**

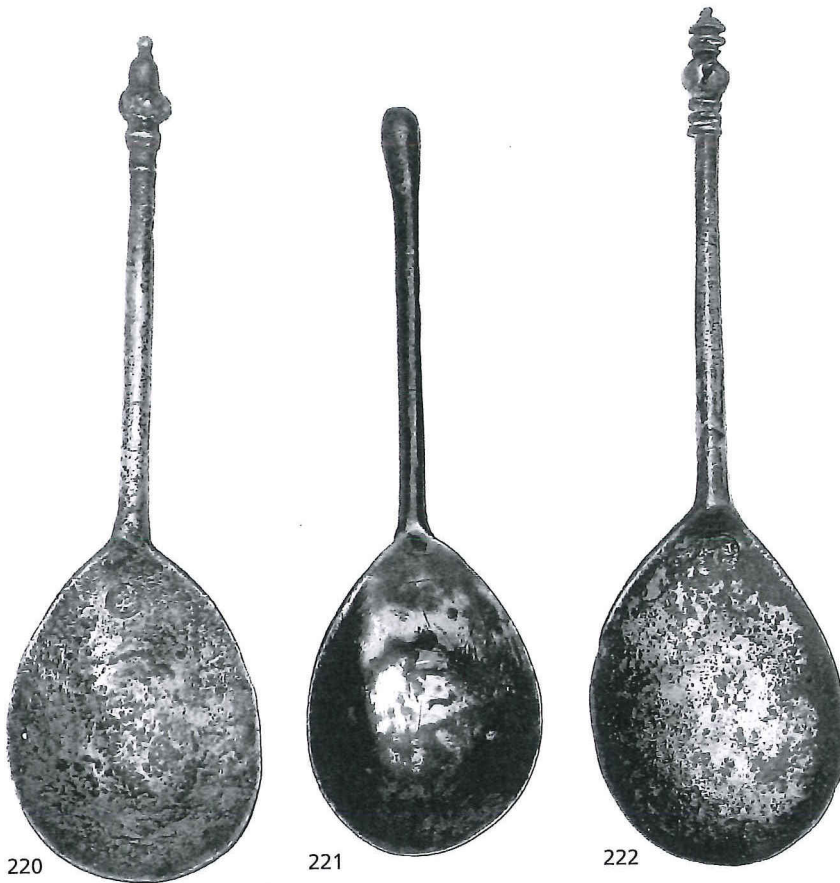
Monday to Friday 8.30am to 6pm  
+44 (0) 20 7447 7447

Please see back of catalogue  
for important notice to bidders

**Illustrations**

Front cover: Lot 626 (detail)  
Back cover: Lot 604 (detail)  
Inside front cover: Lot 282  
Inside back cover: Lot 260





## The Franklin Collection of Spoons

**220**  
A late 16th Century acorn-knop spoon  
With rounded hexagonal stem, touchmark to fig-shaped bowl of TP, (PS 7625), inventory no. 112, length 16cm  
£150 - 200

Provenance: Peal Collection, sold Sotheby's October 1981, lot 91.

A gadrooned baluster knob spoon by the same maker sold Christie's *The Little Collection*, May 2007, lot 133.

**221**  
A 16th/17th Century stump-end or blob-knop spoon  
The hexagonal stem broadening to the rounded stump-end, fig-shaped bowl, inventory no.127, length 14.4cm  
£150 - 200

Provenance: Peal Collection  
Illustrated *British Pewter & Britannia Metal for Pleasure and Investment*, C.A. Peal, p.97, fig. 32. The author described the spoon as *provincial*.

**222**  
A 16th Century gadrooned baluster-knop spoon  
With tapering hexagonal stem, touchmark to fig-shaped bowl, possibly 'RN', (OP 5818, PS 6894), inventory no.130, length 16.3cm  
£150 - 200

Provenance: Minchin and Peal Collections, sold Sotheby's October 1981, lot 94.

A similar spoon sold in these rooms, *The Homer Collection*, May 2009, lot 990.

**223**  
A 16th Century stump-end spoon  
With tapering rounded stem, the fig-shaped bowl stamped with a crowned rose, inventory no.123, length 15.4cm  
£200 - 300

Provenance: Peal Collection  
Illustrated *British Pewter & Britannia Metal for Pleasure and Investment*, C.A. Peal, p.65, pl.5.

**224**  
An early 17th Century seal-knop spoon, circa 1630  
The hexagonal stem and fig-shaped bowl with traces of nature's gilding; together with a 15th century style horned head-dress spoon, with rounded hexagonal stem and fig-shaped bowl, length 17cm. (2)  
£150 - 200

Provenance: Homer Collection, (Number 111), (seal knob only).  
Illustrated *Five Centuries of Base Metal Spoons*, R.F. Homer, p.39.

**225**  
A mid-17th Century baluster-knop  
With flattened hexagonal stem, indistinct touchmark of 'T' to fig-shaped bowl along with wriggle-work cross, length 16.3cm  
£100 - 150

Provenance: Peal Collection  
Illustrated *British Pewter & Britannia for Pleasure and Investment* p.97, fig. 32. The author describes the cross on the bowl as '*said to protect from the evil eye*'.





223



224



224



225

226

A baluster-knop spoon, circa 1600

With hexagonal stem, touchmark to re-stored fig-shaped bowl, length 14cm, inventory no.118; together with a part 17th century stump-end spoon, with hexagonal-type stem and replaced fig-shaped bowl, length 14.7cm. (2)

£120 - 180

Provenance: Peal Collection, (baluster knop spoon only).

Illustrated *British Pewter & Britannia for Pleasure and Investment* p.65, pl.5.

227

A latten Madonna and Child knop spoon

Possibly circa 1500

With four-sided stem, the fig-shaped bowl extensively tinned, inventory no.123, length 14.2cm

£150 - 200

Provenance: Excavated in Ireland.

228

A rare 16th Century spoon

With traces of gilding, the knop of pilgrim badge type in the form of a long-haired lady, hands on hips, wearing an open fretwork skirt, the stem with panels of hatched decoration, the oval bowl with zig-zag decoration, length 13cm,

£400 - 600

Provenance: Excavated from the Thames foreshore, 1979.

229

A rare 14th Century spoon

The 'mandolin' shaped bowl with cast decoration within beaded surround, the tapering triangular stem cast in Lombardic script *IESVS NAZARENVS*, length 9.8cm, £400 - 600

A similar stem, found at Billingsgate, reputedly in the collection of the Museum of London.

230

A late 17th Century trifold spoon

Maker's mark of IC (w.1684-?), (OP 5515), to rear of stem end, also stamped 'N' to front of stem, with oval bowl, length 19cm; together with a latten trifold spoon, maker's mark of 'R?' to oval bowl, tinned; and a latten slip-top spoon with flattened hexagonal tapering stem and fig-shaped bowl, length 14cm, (3)

£200 - 300

231

A late 17th Century trifold spoon

Maker's mark 'IB' to rear of stem, (possibly PS 1326), with broad trifold end, rat-tail to rear of oval bowl, tinned, length 20cm; together with a latten trifold spoon the end of stem with two simple incised grooves, maker's mark of GI(?) to oval bowl, length 16.5cm, (2)

£200 - 300

232

A late 17th Century latten 'puritan' spoon

The oval bowl with touchmark of Gabriel Grunwin, London, (w.1681-1713), (PS 4123), length 18.5cm; together with a latten trifold spoon, circa 1690, indistinct maker's mark to oval bowl, length 18cm, (2)

£200 - 300



226



226



227



228



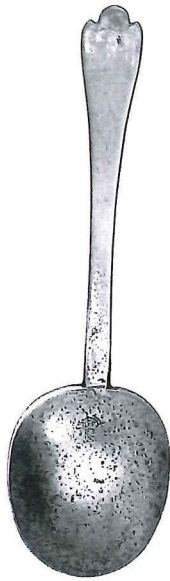
229



230



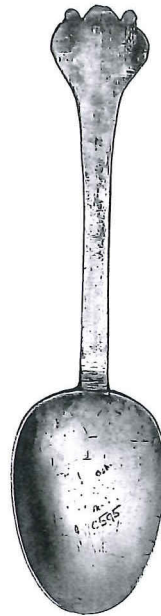
230



230



231



231



232



232

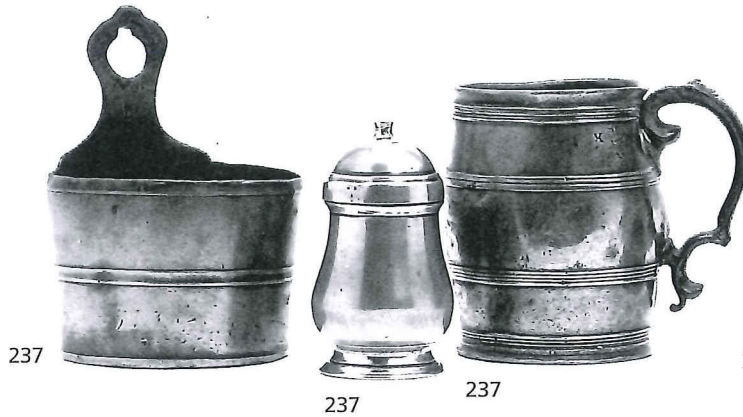


235

235



236



237

237

237

238



233

A miscellaneous group of pewter To include an early 19th century tulip-shaped quart mug, hallmark to rim of Bolton & Wylde, Wigan, (w.1822-1835); together with a Scottish quart concave-sided mug, with mark to rim of John McGlashan and Co., Glasgow, (w.1882-1917); a Birmingham straight sided mug, a Glasgow half-pint lidded baluster measure, a half-pint Irish haystack measure, and two Dutch spoons. (7)  
£200 - 300

234

A pap boat, circa 1800  
Probably Irish  
With harp touchmark inside base, length 10cm; together with another pap boat with solid handle and rubbed touchmark inside base, Richard Munday type label to reverse, length 12.5cm, (2)  
£150 - 200

235

A Scottish crested spouted laver  
The tapering drum with broad mid-fillet, flat urn-knopped lid, twin-lobed thumbpiece, single-curve handle with strut and diamond attachment, touchmark inside base of Graham & Wardrop, Glasgow, (w.1774-1814), (OP 1943, PS 46), height 26cm, together with a half-gallon spouted ale jug, circa 1800, the bulbous body engraved with monogram, dome lid, solid chair-back thumbpiece, double C-scroll handle, height 19.5cm, (2)  
£300 - 400

236

An early 19th Century West Country half-gallon harvester measure  
With lip to flared collar, single-curve handle with thumbrest, numerous Victorian verification marks to lip and top of body, body stamped ½ GALLON, height 22cm  
£200 - 300

237

A barrel-shaped mug, circa 1830  
Pint capacity, the body with four bands of multiple incised reeding, crowned mark to collar, double C-scroll handle with fish-tail terminal, height 11cm, a spice pot, circa 1800, of baluster form, with knopped dome screw-top and flared foot, height 9.8cm; and a mural container, circa 1800, possibly a Dutch soap dish, the main circular body with mid fillet, the integral back with pierced hanging aperture and touchmark, height 14.2cm (3)  
£200 - 300

238

An 18th Century dome-lid tulip shaped tankard, Bristol  
Touchmark inside base of Burgum & Catcott, Bristol, (w.1765-1779), (OP 708, PS 1182), body with two mid incised lines, dome-lid, scroll thumbpiece and S-shaped handle with fish-tail terminal, height 19cm  
£200 - 300





239

**239**  
A rare 18th Century candlestick, Newcastle-upon-Tyne  
With baluster stem raised on a domed foot, touchmark to foot of Robert Sadler, Newcastle-upon-Tyne, (w.1734-1778), (OP 4088, PS 82), along with crowned 'X' mark, ownership initials 'AC' to underside, *height 16.5cm*  
£300 - 400

Related literature: *Pewter of the Western World 1600-1850*, P. Hornsby, p.352, fig.1095.

**240**  
A Beefeater flagon, circa 1660  
The plain straight-sided body with ovolo base, beefeater-type lid with twin-cusped thumbpiece and single-curve handle, hallmarks to lid of 'RF', (MPM 55986, PS 3666), together with ownership initials 'B' 'R', *height 25.5cm*  
£1,000 - 1,500

**241**  
A rare 18th Century candlestick, Newcastle-upon-Tyne  
With baluster stem raised on a domed foot, crowned ownership initials 'U' to underside, *height 16cm*  
£200 - 300

Although there is no obvious maker's marks to this lot this style of candlestick is known only to have been made by two Newcastle pewterers; Robert Sadler, (w.1734-1778) and George Lowes, (w. 1725-1765).

Related literature: *Pewter of the Western World 1600-1850*, P. Hornsby, p.352, fig.1095.



240

**242\***  
An 18th Century O.E.W.S. pint double-volute baluster measure  
Touchmark of William Fasson, (w.1758-1800), (PS 3268), to collar, plain body, handle with ball terminal and diamond attachment, *height 14.5cm*.  
£150 - 200

**243\***  
An 18th Century O.E.W.S. half-pint double-volute baluster measure  
The body with three bands of twin incised lines, the flat-lid with crowned WR mark, the handle with ball terminal and diamond attachment, *height 12.7cm*.  
£100 - 150

**244**  
A group of spoons  
To include a Queen Anne portrait split-end spoon, circa 1705, cast with the bust of Queen Anne and initials 'AR' within crowned scrolling leaves, the bowl reverse cast with foliage surround rat-tail, ownership initials to rear of stem end, *length 17cm*; together with another scroll-cast decorated split-end spoon, of similar date, with elongated bowl and traces of nature's gilding, maker's mark to rear of stem, *length 19.5cm*; an acorn-knop spoon, circa 1500, maker's mark to fig-shaped bowl, *length 16cm*; and a 16th Century slip-top spoon, with hexagonal stem, maker's mark of NB (w.1550-?), (OP5445, PS1339) to fig-shaped bowl, *length 15.8cm*, (4)  
£200 - 300

241



245

245

245

**A 19th Century dome-lid tulip-shaped tankard**

Quart capacity, the plain body with indistinct hallmarks and crowned WR mark, rubbed touchmark inside base, the dome-lid with open chair-back thumbpiece, double C-scroll handle with fish-tail terminal, *height 20cm*, together with a pint dome-lid tulip-shaped tankard, with similar thumbpiece and handle, verification marks to collar, crowned X mark inside base, *height 16cm*, (2)

£200 - 300

246

**A 19th Century dome-lid concave-sided tankard**

Quart capacity, the body with skirt fillets, open chair-back thumbpiece and single curve handle, crowned X mark inside base, *height 21cm*, together with a spouted half-pint dome-lid tankard, touchmark inside base of Thomas Phillips II, (w.1832-1851), (OP 3652, PS 7326), the body with two bands of multiple incised lines, solid shaped thumbpiece, single-curve handle, *height 12.5cm*, (2)

£200 - 300

247

**A set of six 18th Century single reed plates, circa 1740**

Each with touchmark, hallmark and London label to reverse of Edward Box, Banbury, Oxfordshire, (w. 1718-1752), (OP 538, PS 887), together with the ownership triad IAM, *diameter 8 7/8in.*; together with another 18th century plain rim plate, *diameter 9in.*; and three spoons, each with elongated oval bowl, London label and crown X mark stamped to reverse of stem, ownership initials HG at the end of each stem, (10)

£200 - 300

The set of six Edward Box plates sold with an original receipt from *Robin Bellamy Antiques*, Witney, Oxfordshire, (£475).

248

**An early 19th Century wriggle-work dish, German, dated 1809**

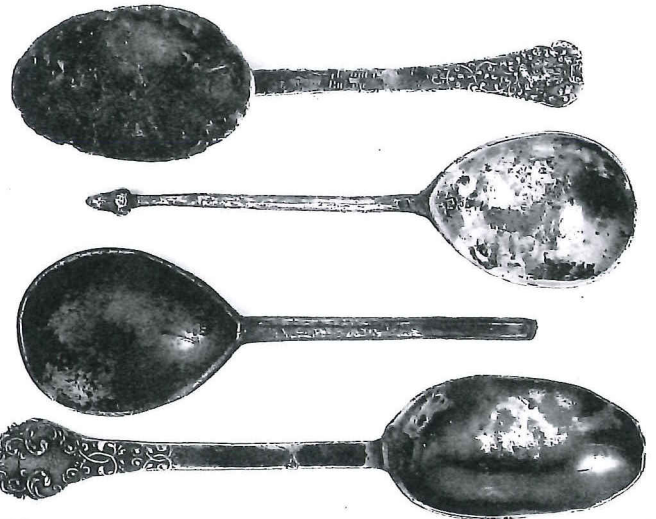
Decorated to the well with an embracing couple in a domestic setting, arch decorated border engraved with the initials 'GiP' and dated '1809', *diameter 12in.*

£150 - 200



246

246



244

249

**An 18th Century engraved dish**

The well decorated with a prominent stag's head and stylised castle, inscribed beneath *CLiderowe*, the rim engraved with meandering flowers, indistinct hallmarks and *hard metal* label to rear, *diameter 12 1/4in.*

£150 - 200

The engraving possibly relates to Clitheroe Castle and the Lords of Bowland.

250

**A set of five 18th Century plain rim plates**

Each with monogram to rim, touchmark and hallmark to rear of Alexander Cleeve II, London, (w.1715-1763), (OP 961, PS 1727), *diameter 9 3/4in.*; together with a set of six plain rim plates, each with ownership triad 'TME' to rim; indistinct hallmark and touchmark to rear, *diameter 9 1/4in.*; four 18th Century style plates with pseudo touchmark of Richard Norfolk, two European plates and one dish, (18)

£200 - 300





363

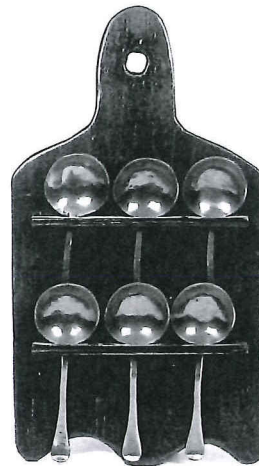


364



366

367



362



365

363  
A Charles II walnut and cane open armchair  
Circa 1675  
The caned back within a scroll carved pierced frame headed by cherubs supporting a crown and embraced by vase finial surmounted spiral uprights, the acanthus wrapped downswept open arms flanking a caned seat, raised on carved block and spiral legs joined by a conforming cresting stretcher and H-shaped spiral turned stretcher, ownership initials *EG* stamped to rear of one upright, 60cm wide x 54.5cm deep x 121.5cm high, (23.5" wide x 21" deep x 47.5" high)  
£300 - 500

Comparative literature: *Early British Chairs and Seats 1500 to 1700*, T.Jellinek, illustrates a similar English walnut caned armchair with the classic *boyes and crowne* cresting, p.159, pl.187. In the description the author makes particular reference to the *elegant vase finials and the simple but effective carved wild rose with leaves on the front of each of the squares of the front legs*; the same distinguished details are found on this lot.

364  
An oak dresser base, Circa 1700  
With boarded top above a pair of frieze drawers centred by a small drawer, scroll-cut apron, raised on silhouette baluster front supports, restorations, 138cm wide x 50cm deep x 75cm high, (54" wide x 19.5" deep x 29.5" high)  
£600 - 800

365  
A large sycamore or beech turned bowl  
Probably early 19th Century  
Of typical hemispherical form with shallow booge, multiple reeded rim and incised external banding, 8cm wide, (3" wide, 41.5cm (16") diameter x 8cm (3") high  
£200 - 300

366  
A very near pair of George I brass candlesticks  
Each with tapering nozzle on a balustroid and knopped stem, raised on a stepped octagonal base, 18.5cm high (2)  
£200 - 300

367  
A pair of mid-18th Century style brass tapersticks  
Each with flared nozzle and knopped columnar stem, raised on a domed petal base, 11.5cm high (2)  
£100 - 150