

GEX

THE ROBERT LANG AUCTION

DAY I : Wednesday, July 28, 1999

Session I : Early Metal - Session II : Lighting



Contact our office for catalogues and free brochures.
Route 201, Skowhegan Road
P. O. Box 830
Fairfield, ME 04937
E-mail: jjulia@juliaauctions.com

Website: www.juliaauctions.com

ME License #AR83
MA License #1406
NH License #3511
Tel: (207) 453-7125
Fax: (207) 453-2502

1358. **GROUP OF 5 BRASS ITEMS.** Brass Grater and Cast iron Kitchen pot, a muffineer, and a pierced brass stand, one meat tenderizer. 19th Century. 96-250 (100-150)
1359. **BRASS AND COPPER HANGING LAMP.** France, 19th/20th Century, with Swan and Star motif. 96-250 (100-150)
1360. **2 BRASS BILGE PUMPS.** 96-250 (100)
1361. **ASSORTMENT OF 10 ITEMS.** One flask brass and copper engraved "R. Lang 1886" who amassed this collection; 1 iron chestnut roaster, with wood handle iron button shoe, brass soap dish, 18th Century ale mug, 19th Century measure, a match holder in form of a shell presented to the Lord of Gloucester and Bristol from the Coristers of Oxford 1862, pair of 19th Century vestment holders, a wonderful miniature William and Mary style gold gilt brass engraved tankard. 96-250 (200-250)
1362. **LARGE BRASS WATERING CAN.** Probably Dutch 18th/19th Century. Height: approx. 19". 96-250 (100-150)
1363. **A BRASS FIELD WORKER'S FOOD WARMING OVEN.** 19th Century. 96-250 (100-150)
1364. **LOT OF BRASS ITEMS.** Approximately 20 items. 96-250 (100)
1500. **TWO FRENCH NORMANDY MEASURES. 21/2".** **CONDITION:** Good, but some rusting of the bases. 96-400 (200-300)
1501. **AMERICAN PEWTER SWING LAMP WITH CAMPHENE BURNER.** Size: height to top of the burners 63/4". **CONDITION:** Good, some patchy oxide. 96-400 (200-300)
1502. **AMERICAN PEWTER SWING LAMP WITH WHALE OIL BURNER.** Size: height to top of the burners 53/4". **CONDITION:** Good. 96-400 (300-400)
1503. **AMERICAN PEWTER SAUCER BASED WHALE OIL LAMP,** With tag stating # 508 Kerfoot Collection. Size: height to top of the burners 5". **CONDITION:** Good. 96-400 (300-500)
1504. **AMERICAN PEWTER SAUCER BASED CANDLESTICK.** Marked R. Gleason. Size: height to top of the burners 31/2". **CONDITION:** Good. 96-400 (300-500)
1505. **AMERICAN PEWTER WHALE OIL LAMP.** Marked F. Porter, Westbrook. Size: height to top of the burners 7". **CONDITION:** Good 96-400 (200-300)
1506. **AMERICAN PEWTER SAUCER BASED SWIVEL LAMP,** With camphene burner. Traces of gold-colored paint. Marked Capen & Molineux. Size: height to top of the burners 7". **CONDITION:** Fair. Burner not original. 96-400 (200-300)
1507. **AMERICAN PEWTER DOUBLE BULLS-EYE WHALE OIL LAMP.** Size: height to top of the burners 81/4". **CONDITION:** Good, except minor repairs to support for bulls-eye. As usual no marking. 96-400 (300-500)
1508. **ANOTHER LIKE 1508,** except the foot is the candlestick form. Size: height to top of the burners 83/4". **CONDITION:** Good. 96-400 (500-700)
1509. **A PAIR OF AMERICAN PEWTER WHALE OIL LAMPS** each with a single burner. Size: height to top of the burners about 4". **CONDITION:** Good. 96-400 (300-400)
1510. **THREE AMERICAN PEWTER LAMPS.** Sizes: height to top of the burners 73/4" to 3". **CONDITION:** All with faults. The largest with a replacement camphene burner, the next with a replacement whale oil burner. 96-400 (150-250)
1511. **AMERICAN PEWTER WHALE OIL LAMP,** by Capen and Molineux with relief cast floral decoration. Size: height to top of the burners 71/2". **CONDITION:** Slight corrosion, otherwise good. 96-400 (200-300)
1512. **AMERICAN PEWTER WHALE OIL LAMP,** by R. Gleason, with candlestick base. Size: height to top of the burners 101/4". **CONDITION:** Good. 96-400 (300-500)
1513. **A PAIR OF AMERICAN WHALE OIL LAMPS.** One has Kerfoot Collection #575. Size: height to top of the burners 51/2". **CONDITION:** Good. 96-400 (200-300)
1514. **AMERICAN PEWTER SAUCER BASED LAMP,** by Capen and Molineux. Size: height to top of the burners 31/4". **CONDITION:** Slight corrosion. 96-400 (200-300)
1515. **THREE PARTS OF AMERICAN PEWTER BULLS-EYE WHALE OIL LAMPS.** **CONDITION:** As found. 96-400 (50-100)
1516. **AMERICAN PEWTER SAUCED BASED WHALE OIL LAMP.** Marked Patent. Size: height to top of the burners 61/2". **CONDITION:** Good. 96-400 (200-300)
1517. **AMERICAN PEWTER WHALE OIL LAMP, SAUCER BASED,** with candlestick stem. Size: height to top of the burners 73/4". **CONDITION:** Good, except needs a little polish. 96-400 (200-300)
1518. **A COLLECTION OF FIVE AMERICAN PEWTER WHALE OIL LAMPS.** Sizes: height to top of the burners 2" to 7". **CONDITION:** Replacement burners and generally good condition. 96-400 (250-400)
1519. **TWO AMERICAN PEWTER LAMPS WITH CAMPHENE BURNERS.** One with a peg for mounting in a candlestick holder. Size: height to top of the burners approximately 7". **CONDITION:** Both good, except cap missing for one burner. 96-400 (200-300)
1520. **A PAIR OF EUROPEAN OIL LAMPS,** with one marked. Size: height to top of the burners about 10". **CONDITION:** Poor. 96-400 (200-300)
1521. **FOUR SIMILAR EUROPEAN OIL LAMPS.** Sizes: height to top of the burners about 10". **CONDITION:** Parts missing. 96-400 (200-300)



1500



1501



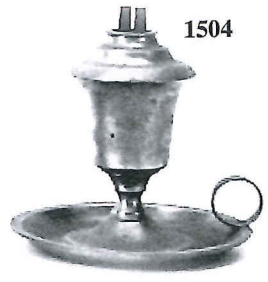
1501



1502



1503



1504



1505



1506



1507



1508



1509



1510



1510



1511



1512



1513



1514



1514



1515



1516



1517



1518



1519

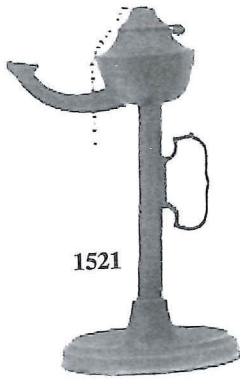


1519

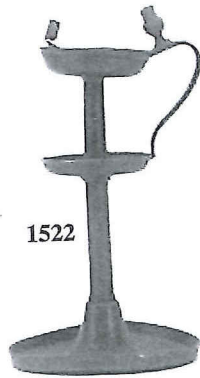
1522. **FIVE SIMILAR EUROPEAN OIL LAMPS.** One marked. Sizes: height to top of the burners 9" to 11". CONDITION: Some parts missing. 96-400 (200-300)
- 1523 **FOUR EUROPEAN OIL LAMPS.** All different. Sizes: height to top of the burners about 9". CONDITION: One appears to be complete, others parts missing. 96-400 (200-300)
- 1524 **FOUR EUROPEAN PEWTER OIL LAMPS,** with Glass Oil Reserves. Three with time gradations in Roman numerals. Sizes: height to top of the burners 13" to 17". CONDITION: One appears to be complete, the others have minor dents and corrosion. 96-400 (400-600)
- 1525 **FOUR EUROPEAN GLASS RESERVES FOR THE PREVIOUS TYPES OF OIL LAMPS.** Size: About 5". CONDITION: Good. 96-400 (50-100)
- 1526 **MAKE-DO AMERICAN PEWTER AND WOOD WHALE OIL LAMP.** Size: height to top of the burner 8 1/4". CONDITION: Good. 96-400 (200-300)
- 1527 **FRENCH PEWTER PUMP LAMP TOGETHER WITH ANOTHER.** The latter having a cut glass camphene peg lamp. Size: height to top of the burners about 11". CONDITION: Good. 96-400 (200-300)
- 1528 **LOT OF THIRTEEN ITEMS** (Maybe you'll get lucky). Miscellaneous European pewter lighting devices. CONDITION: Generally OK. 96-400 (200-300)
- 1529 **A LOT OF SIX PEWTER LIGHTING DEVICES.** Includes a late American camphene lamp, a spark lighting device. CONDITION: Some corrosion, but generally good. 96-400 (200-300)
- 1530 **A PAIR OF PEWTER CANDLESTICKS, MODERN,** with B & P hallmarks. Size: height 6 1/2". CONDITION: Good 96-400 (100-200)
- 1531 **A PAIR SIMILAR.** No marks, artificially oxidized. Size: height 6". CONDITION: Good. 96-400 (100-200)
- 1532 **THREE PEWTER CANDLESTICKS.** Each slightly different in form. All with hollow incurved conical bases. Size: height 6". CONDITION: Corrosion and damage. 96-400 (200-300)
- 1533 **PAIR OF EUROPEAN PEWTER CANDLE HOLDERS,** With domed feet. Uncertain age. Size: height about 7". CONDITION: Good. 96-400 (200-300)
- 1534 **A PAIR OF EUROPEAN CANDLESTICKS** (Probably Spanish or Portuguese). With domed foot and acorn stem. Casted initials B. R. underneath. Size: height 8". CONDITION: cracks and holes. 96-400 (300-400)
- 1535 **A LOT OF TWO PAIRS OF EUROPEAN PEWTER DOMED BASED CANDLESTICKS.** Almost pure lead. Size: Height 7". CONDITION: Poor. 96-400 (200-300)
- 1536 **A LOT OF FOUR SMALLER SIMILAR TO PREVIOUS LOTS CANDLESTICKS.** Sizes: height 5". CONDITION: Scratches, otherwise OK. 96-400 (200-300)
- 1537 **A PAIR OF PEWTER CANDLESTICKS, MODERN,** with B & P hallmarks. Size: height 6". CONDITION: Good, artificially oxidized. 96-400 (50-100)
- 1538 **PAIR OF FRENCH PEWTER OCTAGONAL BASED CANDLESTICKS.** Size: height 7". CONDITION: Major damage. 96-400 (200-300)
- 1539 **A FURTHER PAIR OF EUROPEAN CANDLESTICKS,** with octagonal bases and acorn stems, probably French. Size: height about 6 1/4". CONDITION: Some cracks. 96-400 (200-300)
- 1540 **A LOT OF TWO EUROPEAN CANDLESTICKS.** Different forms. Size: Height 5 1/2". CONDITION: Good, except some scratches and patchy oxide. 96-400 (200-300)
- 1541 **A LOT OF TWO EUROPEAN PEWTER LIGHTING DEVICES,** Both French. The first is a pump lamp. The second is Rococo style. CONDITION: Good on both. 96-400 (250-400)
1542. **EXCEPTIONALLY TALL PEWTER CANDLESTICK.** Cylindrical stem, round base. Size: height 15". CONDITION: Some very minor repairs. 96-400 (200-300)
- 1543 **LOT OF EIGHTEEN PEWTER LIGHTING DEVICES.** Includes five pairs of miniature candlesticks. CONDITION: Generally good. 96-400 (200-300)
- 1544 **A DOUBLE GIMBALLED WHALE OIL LAMP,** With weighted iron foot. Undoubtedly for maritime use. Size: height to top of the burners 5 3/4". CONDITION: Good. 96-400 (300-500)
1546. **MINIATURE LAMP.** S-I-23. Time Lamp. Clear glass bottom with white milk glass beehive shade. Lamp base is embossed "Time & Light Pride of America. Grand Vals Perfect Time Indicating Lamp" "Size 7". CONDITION: Excellent. 96-400 (150-250)
1547. **MINIATURE LAMP.** S-I-116. Fishscale pattern in amber glass. Acorn burner. Size: 5". CONDITION: Excellent. 96-400 (125-175)
1548. **MINIATURE STUDENT LAMP.** Brass lamp with white milk glass shade. Olmsted burner. Size: 8" to top of ring. CONDITION: Excellent. The shade is old but not the style generally found on this lamp. 96-400 (1000-1300)
1549. **PAIR OF MINIATURE LAMP SHADES.** S-1-369. Cranberry glass, Beaded Swirl pattern chimney shades. CONDITION: One shade has a 1/8" fishscale flake on the top edge of the shade. Both shades have an insignificant flake on the fitter edge. 96-400 (200-300)
1550. **FINGER LAMP.** T-I-197h. Berkshire Variant in cobalt blue glass with twin tube brass burner. Size: 3". CONDITION: Excellent. 96-400 (250-400)



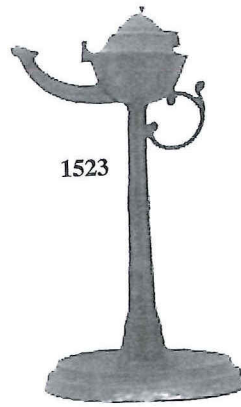
1520



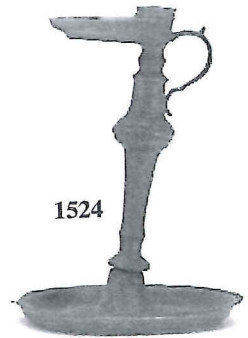
1521



1522



1523



1524



1525



1527



1528



1529



1526



1530



1531



1532



1533



1534



1535



1536



1537



1537



1538



1539



1055	300	1164	500	1276	875	1523	125	1654	100
1056	900	1165	3,550	1277	375	1524	800	1655	525
1057	3,300	1166	150	1278	500	1525	25	1656	175
1058	500	1167	50	1279	600	1526	200	1657	100
1059	250	1168	75	1280	200	1527	350	1658	350
1060	250	1169	150	1281	300	1528	225	1659	250
1061	350	1170	125	1282	600	1529	75	1660	150
1062	250	1171	200	1283	150	1530	45	1661	25
1063	225	1172	200	1284	350	1531	55	1662	125
1064	175	1173	600	1285	450	1532	150	1663	50
1065	850	1174	400	1286	350	1533	1,400	1664	300
1066	550	1175	100	1287	125	1534	1,300	1665	250
1067	700	1176	125	1288	275	1535	275	1666	50
1068	200	1177	50	1289	550	1536	250	1667	575
1069	85	1178	150	1290	400	1537	25	1668	30
1070	750	1179	100	1291	400	1538	40	1669	250
1071	800	1180	300	1292	500	1539	50	1670	450
1072	800	1181	75	1293	600	1540	50	1671	100
1073	350	1182	275	1294	850	1541	100	1672	200
1074	50	1183	225	1295	450	1542	150	1673	100
1075	225	1184	400	1296	850	1543	250	1674	300
1076	250	1185	600	1297	250	1544	175	1675	275
1077	450	1186	450	1298	1,300	1546	125	1676	500
1078	625	1187	950	1299	1,800	1547	75	1677	100
1079	275	1188	1,100	1300	800	1548	750	1678	200
1080	235	1189	600	1301	250	1549	50	1679	250
1081	500	1190	400	1302	1,100	1550	450	1680	200
1082	100	1191	450	1303	650	1551	75	1681	400
				1360	1,200	1552	10	1682	150
1135	150	1248	250	1361	175	1625	525	1966B	2,100
1136	175	1249	125	1362	400	1626	65	1967	4,000
1137	250	1250	400	1363	50	1627	125	1968	200
1138	250	1251	850	1364	175	1628	45	1969	275
1139	200	1252	300	1499	150	1629	45	1970	900
1140	500	1252A	1,500	1500	200	1630	100	1971	300
1141	100	1253	900	1501	150	1631	550	1972	400
1142	500	1254	700	1502	125	1632	50	1973	550
1143	100	1255	1,200	1503	250	1633	300	1974	350
1144	400	1256	1,200	1504	700	1634	150	1975	50
1145	350	1257	1,600	1505	200	1635	150	1976	2,750
1146	350	1258	1,000	1506	250	1636	350	1977	250
1147	500	1259	800	1507	400	1637	50	1978	350
1148	1,100	1260	1,350	1508	425	1639	300	1979	700
1149	100	1261	700	1509	250	1640	300	1980	75
1150	225	1262	800	1510	200	1641	35	1981	125
1151	150	1263	850	1511	225	1642	125	1982	95
1152	275	1264	250	1512	350	1643	200	1983	400
1153	150	1265	800	1513	225	1644	175	1984	150
1154	225	1266	550	1514	150	1645	150	1985	475
1155	100	1267	450	1515	100	1646	875	1985A	950
1156	100	1268	200	1516	450	1647	125	1986	350
1157	1,850	1269	225	1517	200	1648	50	1987	650
1158	1,000	1270	900	1518	400	1649	50	1988	300
1159	70	1271	1,300	1519	325	1650	125	1989	1,500
1160	450	1272	600	1520	100	1651	225	1990	900
1161	400	1273	500	1521	250	1652	125	1991	1,250
1162	325	1274	850	1522	275	1653	50	1992	325
1163	550	1275	50						