

GET

# Summers Place

Sale BH7019-21

*Auctions:* 18, 19 and 20 March 1997

## Absentee Bids

This catalogue may be referred to as BH7019-21

Fax for bids only: (01403) 785332

---

## Auctions

**Oak & Country Furniture,  
Treen & Works of Art**  
Tuesday 18 March at 10.30 am

**Textiles, Pewter & Metalwork**  
Blackdown Room  
Tuesday 18 March at 2 pm

**British Pottery & Porcelain**  
Cissbury Room  
Wednesday 19 March  
at 10.30 am. *There will be a  
short break during this sale*

**Tinplate & Diecast Toys,  
Trains & Soldiers**  
Wealden Room  
Thursday 20 March at 10.30 am

**Teddy Bears,  
Dolls & Dolls' Houses**  
Wealden Room  
Thursday 20 March at 2 pm

---

## On View

Friday 14 March 10 am to 4 pm  
Saturday 15 March 9.30 am to 12.30 pm  
Sunday 16 March 2 pm to 4.30 pm  
Monday 17 March 10 am to 4 pm

Friday 18 March 10 am to 4 pm  
Saturday 15 March 9.30 am to 12.30 pm  
Sunday 16 March 2 pm to 4.30 pm  
Monday 17 March 10 am to 4 pm

Saturday 15 March 9.30 am to 12.30 pm  
Sunday 16 March 2 pm to 4.30 pm  
Monday 17 March 10 am to 4 pm  
Tuesday 18 March 10 am to 4 pm

Saturday 15 March 9.30 am to 12.30 pm  
Monday 17 March 10 am to 4 pm  
Tuesday 18 March 10 am to 4 pm  
Wednesday 19 March 10 am to 4 pm

Saturday 15 March 9.30 am to 12.30 pm  
Monday 17 March 10 am to 4 pm  
Tuesday 18 March 10 am to 4 pm  
Wednesday 19 March 10 am to 4 pm

---

## Catalogue

£10 at the gallery

£11 by mail

£12 overseas

Front cover illustrations: Dinner service 690,  
set of seven jugs 671, Pearlware jug 639, Wemyss mug 875A  
Back cover: left to right; top 1029, 1020, 669;  
middle 1070, 849; bottom 1404, 1405, 853

## SOTHEBY'S

SUSSEX

Summers Place, Billingshurst, West Sussex RH14 9AD

Telephone: (01403) 783933

Fax: (01403) 785153

Sotheby's London: Registered at 34-35 New Bond Street, London W1A 2AA  
No. 874867

**This sale is subject to the Conditions of Business printed in this  
catalogue and to reserves**



*The Property of the Egremont Family, removed from Lord Percy's Dressing Room at Petworth House:*

- 348 **A PAIR OF WOOL TAPESTRY CURTAINS AND PELMET, 20th Century**, densely woven with a repeat design of trees with clearing, in varying shades of green, blue and browns, trimmed in blue, *the pelmet: 194.5cm drop, 164.5cm wide; the curtains, 249.5cm drop, 126cm wide (3)* £150-200
- 349 **TWO PAIRS OF NEEDLEWORK CUSHIONS, of early 18th Century design**, worked with mythical monsters and flowers on a sable ground, with green silk tasselled borders £200-300
- 350 **AFTER FOURIE: A WOVEN TAPESTRY HANGING, French late 19th Century**, showing figures in classical dress in a garden landscape setting, *152 by 182cm; 5ft by 5ft 10in* £200-300
- 351 **A PAIR OF NEEDLEWORK BELL PULLS, circa 1880**, worked with a design of crimson red lozenges and golden foliage against a fawn background with crimson and gold ornate rosette tops and tassels, *some damage to tassels, 244cm, 8ft* £300-500
- 352 **A MACHINE MADE TAPESTRY PANEL, circa 1880**, depicting an arcadian landscape scene with gentlemen on horseback, ladies, children and peasants, mainly in shades of brown, within four sided floral border, *186 by 210cm; 6ft 1in by 6ft 11in* £300-600
- 353 **AN AUBUSSON TAPESTRY FRAGMENT CUSHION, early 18th Century**, the fragment worked with part of a classical battle scene with horses; braided tassel fringe, *damages and repairs, 37 by 72cm; 14 1/2in by 28 1/2in* £150-250
- 354 **A MACHINE MADE TAPESTRY PANEL, circa 1920**, printed with a peacock, turkey, cockatoos and other birds against large scrolling foliage, in a woodland landscape and village beyond, within foliate floral border, *177cm; 6ft 10in square* £150-200
- 355 **LENGTH OF TENT-STITCH BORDER, 18th Century**, from the Bernheimer collection, worked in scrolling leafy design, *21 by 262cm; 8 1/2in by 8ft 7in, together with two fragments, 30cm; 1ft, and 38cm; 1ft 3in; a length of 18th Century border embroidered with roses with ribbons tied in a bow to each end, 26 by 193cm; 10 1/2in by 6ft 4in. Together with a piece of 18th Century crewel-work, 89 by 80cm; 2ft 11in by 2ft 7 1/2in, and a fragment of red silk damask (6)* £250-350
- 356 **A PAIR OF CHINESE EMBROIDERED SATIN WALL HANGINGS, circa 1860**, the red satin panels each worked with a dragon and scenes of children at play with flowering trees and butterflies, *distressed, 170 by 67cm; 5ft 7in by 2ft 2 1/2in* £150-250

357 **THREE ROLLS OF CREPE SILK FOR KIMONOS, circa 1900**, one with a pale cloud design embroidered with finches; two with floral prints on pastel grounds, *35cm; 1 1/4in wide, each in original waxed paper wrapping* £150-200

358 **FOUR PANELS OF ORIENTAL WOVEN SILKS, late 19th Century**, brown ground with allover Ying and Yang design in green, blue, silver and white, Japanese; a dragon design on blue cloud background, Chinese; an overall design of dianthus and morning glory on cinamon ground; a panel with an allover design of Buddhist emblems in gold, Chinese; *each approximately 66cm; 26in square; together with a larger piece with geometric tile design, 105 by 132cm; 3ft 5in by 4ft 4in (5)* £120-180

359 **A CHINESE SILK EMBROIDERED PANEL, mid 19th Century**, the terracotta field embroidered with two central figures above a frog and a fish with flowers above a seawave band within a black silk border, *80 by 72cm; 2ft 7 1/2in by 2ft 4in; a silk panel depicting Shoulao leaning on a staff hung with Taoist emblems accompanied by a boy on a deep blue background, 79 by 64cm, 2ft 7in by 2ft 1in, together with a pair of embroidered sleeve panels (4)* £80-120

360 **A FRENCH JACQUARD SHAWL, mid 19th Century**, the centre with two floral medallions halved in crimson and green, with a large fleur de lyn and scalloped lobed pattern in crimson, pale blue, pink and green, with patterned fringe panels, *335 by 165cm; 11ft by 5ft 5in* £200-300

361 **A PAISLEY PATTERN SHAWL, mid 19th Century**, the central arabesque medallion surrounded by scrolling arabesques and boteh in shades of red, blue, green and gold, with harlequin ends, *328 by 160cm; 10ft 9in by 5ft 3in* £200-300

362 **A KASHMIRI WOOL EMBROIDERED BEDCOVER, circa 1900**, the terracotta wool ground embroidered with a central medallion and allover floral design in coloured silks, *unfinished, 208 by 160cm; 6ft 10in by 5ft 3in* £250-300

*(For colour illustration see page 24)*  
363 **FIVE TURKISH TOWELS, second half 19th Century**, one linen towel with each end embroidered with a tree and pairs of storks, the other with the ends embroidered with various repeat patterns of vases of flowers in coloured silks and metalthread, *each approximately 23 by 210cm; 9in by 6ft 10in; another similar, cut and joined; together with a linen panel with a repeat pattern of flowers (7)* £200-300

364 **AN WOVEN SILK SHAWL, Indian, early 20th Century**, the fine cream silk woven with stripes of pinks, purple and lemon yellow; *170 by 165cm; 5ft 7in by 5ft 5in; a pair of Turkish silk embroidered purses, and a length of pink striped glazed cotton furnishing fabric (4)* £200-300

## BRITISH PEWTER

The following lots are from the collection of Kenneth Bradshaw, a former president (1973-5) and treasurer (1969-80) of the Pewter Society. In 1962 he arranged the successful exhibition of Pewter at the Usher Art Gallery, Lincoln. The collection is notable for its concentration of English pewter from the Tudor and Stuart periods and the fine condition and quality of most of the pieces. An earlier tranche from the Bradshaw collection was sold by Sotheby's London 13th June 1977

*(For colour illustration see page 24)*  
365 **A FINE AND LARGE CHARLES I FLAGON, by the maker E.G., circa 1630**, the tapering cylindrical drum with ovolo-moulded foot, the knopped 'bun' lidded cover with a bar and heart pierced thumbpiece, touch on scroll handle (O.P.5614A), *38cm; 15in overall* £4,000-6,000

Ex Christopher Peal Collection

*(For colour illustration see page 24)*  
366 **A CHARLES I FLAGON, by the maker E.G., circa 1630**, the tapering cylindrical drum with a knopped 'bun' lidded cover and ovolo moulded foot, bar and pierced heart thumbpiece, ownership initials S R over A C and touch to scroll handle (O.P. 5614A), *34cm; 13 1/2in* £3,500-5,000

*(For colour illustration see page 24)*  
367 **A JAMES I FLAGON, circa 1610-19**, with tapering cylindrical drum on a ovolo moulded foot, the knopped 'bun' lidded cover with large erect thumbpiece, engraved under base 'RP Botterels Aston, 1619', *36cm; 14in* £3,000-4,000

Exhibited Usher Gallery Lincoln, 1962, Cat No 34. Bottrells Aston Church is in Shropshire.

*(For colour illustration see page 24)*  
368 **A RARE BEEFEATER FLAGON, by Thomas Cooper, circa 1665**, the plain drum on a broad spreading domed foot engraved with the motto 'This is my Bloud, 1678' in a cartouche of scrolled mantling, the Beefeater style cover with a central raised boss and twin cusped thumbpiece, indistinct touch in base (O.P. 1111), *27cm; 10 1/2in* £3,000-4,000

Ex R.W.Cooper Collection. Formerly from St.George's Church, Barton-in-Fabis, Nottingham. This lot is sold together with the faculty to Mr Cooper dated 1951.

Exhibited Usher Gallery, Lincoln, 1962, Cat No 41. Illustrated in Kenneth Ulyett: *Pewter Collecting for Amateurs.*



(For colour illustration see page 47)

396 **A FINE BROAD RIMMED CHARGER**, made for Thomas Cottle (or Cotehele) circa 1600-30, the curving well with raised central boss, the broad rim slightly upcurved, onership initials 'T.C.' to rim and touch adverso of the maker T.M. with a heart over two birds (M.P.M. 5801a), 50cm; 19<sup>3</sup>/<sub>4</sub>in diam; the rim 8.6cm; 3<sup>3</sup>/<sub>4</sub>in £4,500-6,000

The ownership initials are those of Sir Thomas Cottle (or Cotehele) whose daughter Mary married Sir Richard Edgcumbe of Cotehele in 1615 or thereabouts. This charger came into her possession either as part of her marriage dowry or upon her father's death sometime before 1640.

Sold Sotheby's London: 1st June 1956, lot 9, when purchased by Ronald Michaelis. and re-sold 12th Nov 1973, lot 12.

Exhibited: Reading Museum, 1969, No.67. and Usher Gallery, Lincoln, 1962, No.235. See Ronald Michaelis: *Early Stuart Pewter from Cotehele, Co. Cornwall*, the Antiquae Collector, Feb, 1959.

(For colour illustration see page 47)

397 **A FINE PAIR OF SHALLOW BOWLS**, made for Thomas Cottle by Richard Glover, circa 1590-1600, each with a deep curving bowl with a raised central boss, the rims stamped with ownership initials 'T.C.' for Thomas Cottle (or Cotehele), each with touch adverso (O.P. 1894 and M.P.M. 5633a), 24.5cm; 9<sup>7</sup>/<sub>8</sub>in £3,000-5,000

See footnote to previous lot. These plates were part of the great collection from Cotehele House, Cornwall then in the collection of the Earl of Mount Edgcumbe. the initials stand for Sir Thomas Cotehele whose daughter Mary married Sir Richard Edgcumbe in 1615 or thereabouts. Sir Thomas was an eminent Antwerp merchant before coming to England in 1558.

(For colour illustration see page 46)

398 **A BROAD RIMMED PLATE**, by Nicholas Dolbeare of Ashburton, circa 1640-60, the flat rim with a faint reed to the edge engraved with the arms of Earl Mount Edgcumbe of Cotehele, Cornwall, and the hallmarks of the maker, the reverse struck twice with the touch of the maker (Peal M.P.M. 5551a), 25.5cm; 10<sup>1</sup>/<sub>4</sub>in diam £1,500-2,500

Sold Sotheby's London, 1st June 1956, lot 236. Another plate from this set was illustrated by Michaelis in his article *Early Stuart Pewter from Cotehele, Co. Cornwall*, in the Antiquae Collector in Feb 1959. Another was exhibited at the Usher Gallery, Lincoln 1962, No. 236.

(For colour illustration see page 50)

399 **A RARE BROAD RIMMED SAUCER**, by Edmund Dolbeare of Ashburton, circa 1640-60, the rim with incised reeded border stamped with the makers 'hallmarks' (Peal M.P.M. 5542) and the ownership initials 'M.E.' (Mount Edgcumbe), 15.4cm; 6in £1,500-2,000

Apparently one of three known saucers from Cotehele House, Cornwall.

Exhibited Usher Gallery, Lincoln, 1962, possibly Cat No.205. Illustrated in Ullyett's *Pewter Collecting for Amateurs* page 100.

A similar saucer was sold in the Michaelis sale lot 93, 11th Feb 1974.

(For colour illustration see page 46)

400 **A FINE BROAD RIMMED PLATE**, circa 1650-60, the rim engraved with the arms of Sir Edward Lake within Stuart mantling and the 'hallmarks' of the maker T.G., the reverse with touch of the same maker, 27cm; 10<sup>3</sup>/<sub>4</sub>in; the rim 6.5cm; 2<sup>1</sup>/<sub>2</sub>in £3,000-4,000

Sir Edward Lake achieved fame fighting for Charles I at Edgehill in 1642. With the Restoration in 1660 he was given a Baronetcy and subsequently became Chancellor of Lincoln Diocese, residing at the Priory, Minister Yard, he died July 1674 and was buried in Lincoln Cathedral.

Exhibited Usher Gallery, Lincoln, 1962, Cat No.200. (in Bradshaw Collection then); and Reading Museum, 1969, Cat No.80. For a fuller history and details of provenance see the *Pewter Society Journal* Vol 6, No.2, Autumn 1987, fig 6.

(For colour illustration see page 42)

401 **A FINE SET OF SIX CHARLES II BROAD RIMMED PLATES**, by William Mathews of London, circa 1680, each rim with a narrow raised reeded border engraved with the ownership triad 'W<sup>WE</sup>' within crossed plumes, and stamped with makers 'hallmarks', touch on reverse (O.P. 3140), also two struck with differing house-marks over the triads, 24cm; 9<sup>3</sup>/<sub>8</sub>in diam £6,000-8,000

Sold Sotheby's London, 28th March 1980, lot 76

A single example matching this set indicating that there was a larger garnish, was in the collection of Antonio de Navarro and later H.H. Cotterell illustrated by him in *Pewter down the ages* p.107 fig.63, described here as 'the rarest of all small English pewter plates, among the most difficult to find of all English Pewter'. This plate was subsequently acquired by A.H. Isher and thence to Bertie Isher from whence it passed to the Cheltenham museum.

(For colour illustration see page 46)

402 **A FINE AND EARLY TUDOR DISH**, circa 1480-1500, the curved well with a raised central boss, the rim struck with the crowned ostrich feather emblem of Arthur Prince of Wales, the silvery patina with traces of 'nature's gilding', 26.5cm; 10<sup>1</sup>/<sub>2</sub>in £2,500-3,500

Ex C.A. Peal Collection. Illustrated and discussed in his book *British Pewter*, page 87. For other examples see also the Museum of London Exhibition Catalogue 1989/90, Cat No.27., Michaelis: *Antique Pewter of the British Isles*, 1955, fig 18 and the Reading Museum 1969 catalogue Cat Nos.11-13.

This plate was one of a hoard of about twenty excavated in 1899 during extensions to Guy's Hospital, London, adjoining a Royal Residence of the Tudor period. They belonged to Prince Arthur who married Catherine of Aragon. Arthur died in 1502 and his widow then married Henry VIII who was Arthur's younger brother. The alloy probably contains nothing but tin and copper hence the silvery appearance.

(For colour illustration see page 47)

403 **A TUDOR BROAD RIMMED PLATE**, circa 1580, the curved shallow well with a central raised boss, the broad slightly raised rim with overall punched decoration of stylised floral motifs, damages, 27.7cm; 10<sup>7</sup>/<sub>8</sub>in diam; the rim 5cm; 2in £500-800

(For colour illustration see page 47)

404 **A RARE EARLY PLATE**, 16th Century or earlier, the rim with narrow raised border stamped with a quartered shield containing initials and devices, and stamped with a makers mark of an oval with the initials 'D.I.' (M.P.M. 5702), damages, 19cm; 7<sup>1</sup>/<sub>2</sub>in £500-800

It has been considered to be 14th Century or Medieval by Mr Bradshaw amongst others: see Reading Museum, 1969, Cat No.8. (also illustrated). Illustrated in Ullyett's *Pewter Collecting for Amateurs*, facing page 68.

However it was sold at Sotheby's London 13th Nov 1980 lot 80 where the punched D.I.mark was considered by Peal to be circa 1550. see M.P.M. 5702.

(For colour illustration see page 46)

405 **A WRIGGLED WORK TRIPLE REEDED RIMMED PLATE**, by William Howard of Drury Lane, circa 1669, the rim with makers 'hallmarks', ownership initials 'A.P' and inscription 'IN GOD IS ALL MY TRUST', the well with a row of three birds, two sets of ownership triad initials and the date 1669, touch adverso (O.P. 2426), 21.5cm; 8<sup>1</sup>/<sub>2</sub>in £1,000-1,500



(For colour illustration see page 46)

406 **A WRIGGLED WORK TRIPLE REEDED RIMMED PLATE**, by John Shorey, circa 1700-10, the rim engraved with the motto 'THE GIFT IS SMALL + THE LOVE IS ALL' together with makers 'hallmarks', the well engraved with a six petal flower, the reverse with touch (O.P. 4263), 23.5cm; 9<sup>1</sup>/<sub>4</sub>in £1,000-1,500

Exhibited Reading Museum, 1969, Cat No.126.

(For colour illustration see page 46)

407 **A FINE WRIGGLED WORK PLATE**, by Thomas Haward of London, circa 1671, the broad flat rim engraved with the motto 'HONOVR IS THE REWARD OF VIRTVE 1671' and in the well 'HONOVR VIRTVTIS PRAEMIVM' both inscriptions within bands of hatching, a flowerhead in the centre of the well, ownership initial 'S' and touch of the maker adverso (O.P. 2215 & 5683), 24cm; 9<sup>1</sup>/<sub>2</sub>in diam £3,000-4,000

Ex C. Peal Collection. Exhibited Usher Gallery, Lincoln, 1962, Cat No.247.

(For colour illustration see page 50)

408 **A TRIPLE REEDED RIMMED PATEN**, circa 1670-80, the rim with ownership initials 'A.P.' and 'S.K.' (presumably Churchwardens), the reverse with the touch of the maker C.B. dated 1670 in a circle (Peal M.P.M. 5417di), 17.2cm; 6<sup>3</sup>/<sub>4</sub>in £300-400

(For colour illustration see page 50)

409 **A STUART BROAD RIMMED PATEN**, circa 1660, the rim with gadrooned raised border and a row of four 'hallmarks', 13.5cm; 5<sup>1</sup>/<sub>4</sub>in diam; the rim 2.8cm; 1<sup>1</sup>/<sub>4</sub>in £700-1,000

Ex Isher Collection. See the Journal of the Pewter Society: Vol 6. No 2. Autumn 1987, fig 3.

(For colour illustration see page 50)

410 **A RARE SAUCER OR SPICE PLATE**, by Charles Flood of London, circa 1630, the curving well with a raised central boss, the curving rim stamped with the ownership initials 'E.I.', the reverse with maker's touch (O.P. 5575a), with traces of 'nature's gilding' overall, 11cm; 4<sup>1</sup>/<sub>4</sub>in diam £700-1,000

Ex Michaelis Collection. Sold Sotheby's London, 12th Nov 1973, lot 109.

Excavated in Wapping in 1925 and exhibited at the Guildhall Museum, London.

Exhibited at the Usher gallery, Lincoln, 1962, No.239 and at the Reading Museum, 1969, No.66.

(For colour illustration see page 50)

411 **AN EARLY SPOON, Roman**, perhaps 5th Century A.D. with a fig shaped bowl and a plain rounded handle with a flat reeded top, corroded, 13cm; 5in £100-200

Found at Byblos, Lebanon

(For colour illustration see page 50)

412 **A HORNED HEADDRESS SPOON**, circa 1450, with hexagonal stem and elongated bowl with traces of a touch and overall traces of 'nature's gilding', 15.5cm; 6in £300-500

Ex Cooper Collection. Exhibited Usher Gallery, Lincoln. For similar see Ronald Homer: *Five Centuries of base metal spoons* page 34. This spoon is unusual in having a touch mark.

(For colour illustration see page 50)

413 **A HORNED HEADDRESS SPOON**, mid 15th Century, the knop of finer definition than most similar, 15cm; 6in £300-500

(For colour illustration see page 50)

414 **A MAIDENHEAD SPOON**, 16th Century, the fig shaped bowl with the touch of a crowned H, the reverse with ownership initials 'A.F.' in Gothic script, 16cm; 6<sup>1</sup>/<sub>4</sub>in £300-500

(For colour illustration see page 50)

415 **A RARE APOSTLE SPOON**, circa 1600, the knop with a figure of St. Peter, 17cm; 6<sup>3</sup>/<sub>4</sub>in £300-500

Ex Isher Collection.

(For colour illustration see page 50)

416 **A DIAMOND POINT SPOON**, circa 1500, with pentagonal stem, unmarked, 14.5cm; 5<sup>3</sup>/<sub>4</sub>in £200-300  
for similar see the Worshipful Company of Pewterers Catalogue No. 459

(For colour illustration see page 50)

417 **AN ACORN KNOPPED SPOON**, 16th Century, touch of R.A. with two keys in a beaded circle, 13cm; 5in £300-400

Exhibited Usher Gallery, Lincoln, 1962.  
For touch see Ronald Homer *Five Centuries of Base Metal Spoons*, page 55 fifth from left in acorn section

(For colour illustration see page 50)

418 **A WRYTHEN KNOPPED SPOON**, circa 1500, unmarked, 16.5cm; 6<sup>1</sup>/<sub>2</sub>in £300-400

Exhibited Usher Gallery, Lincoln, 1962.

(For colour illustration see page 50)

419 **A FLUTED BALUSTER AND SEAL TOP SPOON**, late 16th Century, with hexagonal stem touch of R.H. in a beaded circle, 15cm; 6in £300-400

Ex Cooper Collection. Exhibited Usher Gallery, Lincoln, 1962.

(For colour illustration see page 50)

420 **A FLUTED BALUSTER KNOPPED SPOON**, circa 1570, touch of the maker B.W. in bowl, 14cm; 5<sup>1</sup>/<sub>2</sub>in £300-400

Ex Cooper Collection. Exhibited Usher Gallery, Lincoln, 1962. For similar see Homer: *Five Centuries of base metal spoons*, page 29.

(For colour illustration see page 50)

421 **A MELON KNOPPED SPOON**, 16th Century, the oval shaped bowl with a partial fleur-de-lys touch, 15.5cm; 6<sup>1</sup>/<sub>4</sub>in £300-400

(For colour illustration see page 50)

422 **A HEXAGONAL KNOPPED SPOON**, circa 1550, with hexagonal stem and touch of the maker N.B. inside bowl, 17cm; 6in £300-400

Ex Cooper Collection. Exhibited Usher Gallery, Lincoln, 1962.

For similar see Ronald Homer *Five Centuries of Base Metal Spoons*, page 32 and page 55 for touch, third from right in Hexagon section.

(For colour illustration see page 50)

423 **A SLIP TOP SPOON**, circa 1600, touch of the maker R.I. inside bowl (O.P. 5736), 16cm; 6<sup>3</sup>/<sub>4</sub>in £200-300

(For colour illustration see page 50)

424 **A PURITAN SPOON**, circa 1660, the end with a crowned 'T' ownership initial, the bowl with the touch of T.B. with a lion in a shield (O.P. 5472), 18cm; 7in £200-300

Ex Cooper Collection. Exhibited Usher Gallery, Lincoln, 1962.

(For colour illustration see page 50)

425 **A LARGE TRIFID SPOON**, circa 1680, covered in 'nature's gilding' with flat stem and trefoil end, rat tail on reverse of bowl, ownership initials 'K.B.' behind handle and touch mark in bowl of T.O. (O.P.5824), 19cm; 7<sup>1</sup>/<sub>2</sub>in £250-350  
Ex Michaelis Collection.

(For colour illustration see page 50)

426 **A RELIEF DECORATED CHOCOLATE SPOON**, circa 1690, of small size decorated with tulips and flowers and a female bust, trifid terminal, traces of a touch, 9.5cm; 3<sup>3</sup>/<sub>4</sub>in £200-300

For one similar see Hilton Price *Old Base Metal Spoons* page 44, fig 28.

427 **A BRONZE SPOON MOULD FOR A PEWTER DOG NOSE SPOON**, circa 1700-20, together with a pewter spoon, 20.5cm; 8in £150-250

Exhibited Usher Gallery, Lincoln, 1962.

Illustrated K. Ulyett's *Pewter Collecting for Amateurs*, facing page 100.



## 428 PEWTER REFERENCE

**BOOKS**, comprising H.H. Cotterell: *Old Pewter Its Makers and Marks*, Batsford 1963; Christopher Peal: *More Pewter marks*, 1976, and addenda 1977; Cotterell: *Bristol West Country Pewterers*, 1918 (4) £50-80

## 429 PEWTER AND OTHER BOOKS AND CATALOGUES

comprising Norman Gask: *Old Silver Spoons of England*, 1926; Catalogue of the Historic Plate of the City of London, Goldsmiths Hall 1951; Early English Portrait Miniatures in the collection of the Duke of Buccleuch; Catalogue of the Pewter Exhibition, Clifford's Inn, 1904; Pewter in America, The Currier Gallery, 1968; British Pewter, the Currier Gallery of Art, 1974; Pewterware with Royal associations, Pewterers Hall, 1974; Munday's Pewter Snippets; Pewter, Art Gallery of New South Wales, 1966; A short History of the Worshipful Company of London, 1968. (1 catalogue only.) (10) £80-120

## 430 PEWTER AND OTHER BOOKS

including R.F. Michaelis: *Antique Pewter of the British Isles and Old Domestic Base Metal Candlesticks*; Massé *The Pewter Collector* revised by Michaelis; Cotterell: *National Types of Old Pewter*; and *Pewter down the Ages*; Ullyett: *Pewter a guide for Collectors and Collecting for Amateurs*; Massé: *Chats on old Pewter* (two editions); Navarro: *Causeuses on English Pewter*; Christopher Peal: *British Pewter* etc (14) £80-120

## 431 FURNITURE REFERENCE

**BOOKS**, comprising Victor Chinnery: *Oak Furniture, the British Tradition*; Wolsey and Luff: *Furniture in England, the age of the Joiner*; Bernard Price: *The Story of English Furniture and English Furniture*, Arthur Negus talks to Max Robertson (4) £50-80

## 432 ANTIQUES AND HISTORY

**BOOKS**, comprising Harrison's History of England, leather bound with original prints; H. Avray Tipping: *English Homes*, period III vol I and period IV vol I covering the Tudor and Stuart periods; and the Connoisseur Period Guides, Tudor and Stuart periods (two volumes) (5) £100-150

## OTHER PROPERTIES

(For colour illustration see page 51)

433 **A GEORGIAN SPIRE FLAGON**, circa 1730-43, the tapering body with a high reeded moulded girdle, domed cover with urn finial, shield thumbpiece and broken scroll handle, on a spreading foot, the drum inscribed 'FRANCES GILBERT TIFFEILD 1743', 32.5cm; 12<sup>3</sup>/<sub>4</sub>in £800-1,200

Ex Michaelis Collection. Lot 77 Michaelis Sale 12th Nov 1973.

Illustrated in Michaelis: *Antique Pewter of the British Isles*, pl. XXV, fig 64. Exhibited Reading Museum, 1969, No. 182b. The late owner believed the word 'Tiffeild' in the inscription was engraved over the word 'Towcester'

## 434 A NARROW REEDED RIMMED

**PLATE**, circa 1680, with a row of 'hallmarks' in the well of eagles displayed (O.P. 5724), ownership triad to rim and indistinct touch of the maker I.I. adverso, 23.5cm; 9<sup>1</sup>/<sub>4</sub>in £200-300

Ex F. Jaeger Collection

(For colour illustration see page 51)

435 **A HALF PINT HAMMERHEAD BALUSTER MEASURE**, 16th/17th

**Century**, with makers touch ..B to lip, the body with no splayed foot rim, the hammerhead thumbpiece with unusually high wedge type connection to flat cover, 14cm; 5<sup>1</sup>/<sub>2</sub>in £500-800

## 436 A PAIR OF SCOTTISH

**BRITANNIA METAL CHALICES**, 19th Century, 2.5cm; 8<sup>1</sup>/<sub>2</sub>in; a matching lidded flagon, 32cm; 12<sup>1</sup>/<sub>2</sub>in, and a matching dish, each piece engraved 'Free Church of Scotland Banchory Fernan. 1843' (4) £200-300

## 437 THREE GEORGIAN PEWTER

**DISHES**, 18th Century, comprising a plain rimmed dish by Edmund Harvey, 38cm; 15in; a single reeded rimmed dish, unmarked, 43cm; 17in; and another similar, damaged (3) £150-200

438 **A LARGE CHARGER BY THOMAS COMPTON**, circa 1810, with plain rim and touch adverso (O.P. 1063), polished, 55.5cm; 21<sup>3</sup>/<sub>4</sub>in £400-600

439 **MISCELLANEOUS PEWTER**, 19th Century, comprising a 'Welsh hat' commode, 20cm; 8in; three assorted ice cream or jelly moulds and covers and four lidless baluster measures (8) £150-200

440 **A TRIPLE REEDED RIM DISH**, English late 17th Century, with a row of hallmarks of three shields and ownership triad to rim and rose and crown touch adverso, 42.5cm; 16<sup>3</sup>/<sub>4</sub>in £180-220

441 **TWO SINGLE REEDED RIM DISHES**, English early 18th Century, the larger 42cm; 16<sup>1</sup>/<sub>2</sub>in; and a reeded rim bowl by Townsend and Compton, circa 1805, 26cm; 10<sup>1</sup>/<sub>4</sub>in (3) £150-200

442 **AN UNUSUAL HEXAGONAL PLATE**, English late 18th Century, indistinct marks, 21cm; 8<sup>1</sup>/<sub>4</sub>in; a single reeded rim plate, by John Kent, circa 1720; and two porringers, circa 1700, both with losses to handles, the larger: 14cm; 5<sup>1</sup>/<sub>2</sub>in diam (4) £180-220

443 **A COLLECTION OF FIVE SPOONS**, English 17th Century, comprising three slip top spoons, different makers marks, damages, 16.5cm; 6<sup>1</sup>/<sub>2</sub>in; two rat tail trifold chocolate spoons, and three Queen Anne period pewter buttons (8) £200-300

444 **TWO ENGLISH BULBOUS TRENCHER SALTS**, circa 1710, each with everted foot and top rim, the larger 8cm; 3in diam; a Continental beaded and gadrooned capstan salt, 6cm; 2<sup>1</sup>/<sub>2</sub>in; and a pounce or spice pot, of straight sided cylindrical form with pierced screw top domed cover, 18th Century, 8cm; 3in (4) £150-200

445 **A NEAR PAIR OF PEPPER CASTORS**, Dutch or English, late 18th Century, of baluster form with urn finials to domed covers, 14cm; 5<sup>1</sup>/<sub>2</sub>in; a similar pepper; and a German rococo coffee pot, with swirled pear shaped body, 16.5cm; 6<sup>1</sup>/<sub>2</sub>in (4) £150-200

446 **A BROAD RIMMED DISH OF SEVENTEENTH CENTURY DESIGN**, the rim with engraved armorial and incised reeding, touch of a phoenix adverso (Robert Nicholson O.P. 3400), 36cm; 14<sup>1</sup>/<sub>4</sub>in £120-180

447 **A TRIPLE REEDED RIM DISH**, by the maker I.C., late 17th Century, with 'hallmarks' and ownership triad to rim, touch adverso, 42cm; 16<sup>1</sup>/<sub>2</sub>in £200-300

448 **THREE ENGLISH SINGLE REEDED RIM DISHES**, early 18th Century; one with rose and crown touch adverso, 46cm; 18in; one by Nicholas Jackman with 'hallmarks' and touch adverso, 42cm; 16<sup>1</sup>/<sub>2</sub>in; and one with indistinct 'hallmarks' and touch adverso, 34cm; 13<sup>1</sup>/<sub>2</sub>in; and a plate by Richard Alderwick, with touch and triad initials adverso (4) £300-400

449 **TWO TRIPLE REEDED RIM DEEP DISHES**, English circa 1690, one by the maker I.F. with a row of four 'hallmarks', ownership initials and indistinct touch adverso, 41cm; 16in; one by the maker W.B. with a row of 'hallmarks' and indistinct touch adverso, 41cm; 16in; and a triple reeded rim dish by Christopher Baldwin of Wigan, 38cm; 15in £500-700

450 **A NEAR SET OF FOUR SINGLE REEDED RIM DISHES**, English early 18th Century, indistinct touches adverso, 38cm; 15in; and two similar deep dishes or bowls, 36cm; 14in (6) £400-600

451 **A SINGLE REEDED RIM DEEP DISH**, English early 18th Century, apparently unmarked, 42cm; 16<sup>1</sup>/<sub>2</sub>in; another shallower, 42cm; 16<sup>1</sup>/<sub>2</sub>in; and a plain rimmed dish, 37cm; 14<sup>1</sup>/<sub>2</sub>in (3) £300-400

452 **MISCELLANEOUS DISHES AND PLATES**, including an oval hot water dish, circa 1810, 43cm; 17in; two hot water plates; a set of six reproduction plates, 20cm; 8in; six assorted plates or small dishes and five assorted reproduction Continental wavy edged plates (20) £250-350



452A **A SINGLE REEDED RIM DISH**, by Thomas Cave of Bristol, circa 1710, with 'hallmarks' and ownership initials to rim, 42.5cm; 16<sup>3</sup>/<sub>4</sub>in diam £250-300

453 **MISCELLANEOUS PEWTER, 19th Century**, including assorted pint and half pint tavern mugs, baluster measures, four peppers, three Britannia metal tea-pots, salts, spoons, etc (33) £200-300

454 **A PAIR OF PLAIN RIM PLATES BY JOHN SHOREY, circa 1720**, the rims engraved with a crest of a gloved hand holding a dagger, touch adverso (O.P.4263), 23.3cm; 9<sup>1</sup>/<sub>4</sub>in £150-250

(For colour illustration see page 51)

455 **A TWO HANDED 'LOVING' CUP, English circa 1720**, of campana form with a raised girdle and domed foot and everted rim with scrolled handles ending in ball terminals, crowned X mark in base, two holes, 21cm; 8<sup>1</sup>/<sub>4</sub>in across handles £150-250

For similar see Peter Hornsby: *Pewter of the Western World*, fig 1008

(For colour illustration see page 51)

456 **A TWO UNUSUAL CHINOISERIE PEWTER TEA CANISTERS, English 19th Century**, one cylindrical with raised cover, the other rectangular with sliding cover, both decorated with an inlay of brass and engraving, the taller 20cm; 8in £400-600

#### CONTINENTAL PEWTER

457 **A COLLECTION OF DISHES AND PLATES, Prague and Bohemia, 18th Century**, comprising a broad reeded rimmed dish, dated 1709 with ownership initials and mantling to rim, the reverse with Prague town mark and touch of a flagon with the initials I.C. 38cm; 15in; a pair of single reeded rim dishes with touches dated 1787 with makers initials, 29cm; 11<sup>1</sup>/<sub>2</sub>in; and a set of five plates with either Prob-zinn marks or Prague town marks, 21cm; 8<sup>1</sup>/<sub>4</sub>in (8) £400-600

458 **A DUTCH SPOON, 17th/early 18th Century**, with a round bowl and 'Puritan' style tapering rectangular handle, touch with worn makers initials and ownership initials to handle, 18.5cm; 7<sup>1</sup>/<sub>4</sub>in £100-200

459 **A SERPENTINE AND PEWTER MOUNTED LIDDED TANKARD, German, probably late 18th/early 19th**, the straight sided slightly tapering drum with reeded bands and a domed circular cover with spire finial, the scroll handle with indistinct makers marks, 15cm; 6in £450-600

460 **A BARREL SHAPED LIDDED TANKARD, Bohemian early 19th Century**, with bands of beading and stepped cover and urn shaped thumbpiece, probably later embossed with a cartouche of harvest produce in a grape vine and barley frame, 23cm; 9in £150-200

461 **A DUTCH PEWTER FLAGON, late 18th Century**, of pear shape with stepped domed cover and plain erect thumbpiece on a domed foot, 23cm; 9in £150-200

462 **A NORMANDY FLAGON BY N. LEFORT OF BAYEUX, late 18th Century**, of usual form with shouldered body and heart shaped cover (touch No 414 Boucaud) and twin acorn thumbpiece, damages, 27cm; 10<sup>1</sup>/<sub>2</sub>in; and another similar, unmarked (2) £150-250

463 **A COLLECTION OF CONTINENTAL DISHES AND PLATES, late 18th Century**, including a wriggled work dish, circa 1800, decorated with a flower in a vase, 43cm; 17in; two dishes and a set of five single reeded rimmed deep plates, 24cm; 9<sup>1</sup>/<sub>2</sub>in (8) £250-350

464 **A PAIR OF CANDLESTICKS, Portugese, 18th Century**, each with triform shell cast base and foliate feet rising to multi-baluster stem, nozzles and drip pans restored, 41cm; 16<sup>1</sup>/<sub>4</sub>in £200-300

465 **A LIDDED TANKARD, Austro-Hungarian, late 18th/early 19th Century**, the straight sided cylindrical body on a domed foot, the domed flat cover with ball thumbpiece and a scroll handle with cast trellis of foliage, ownership initials and date 1824 to cover, 28cm; 11in £150-200

(For colour illustration see page 51)

466 **A RELIEF CAST PLATE, after George Schmauss of Nurnberg, circa 1640**, decorated with Ferdinand II on horseback, the border with the eleven electors, touch of Schmauss (Hintze No.244) and a subsidiary touch of the maker F.E. in the border, the reverse with engraved ownership shields and initials dated 1640, 20cm; 8in £1,200-1,800

the original tellers by Schmauss which have been dated to circa 1630 did not carry subsidiary touch marks and it is reasonable to assume given the engraved date on the reverse that the maker F.E. used the original moulds only a few years later

467 **A HEXAGONAL WRIGGLED WORK AND REPOUSSE DISH, by Adam Christian Reichart of Breslau, late 17th Century with later embellishments**, decorated with a parrot in flower scrolls, the similarly decorated border with six raised portrait busts, the reverse with touch (Hintze Vol.4. 271), and date 1531, 33.5cm; 13<sup>1</sup>/<sub>4</sub>in £200-250

#### BRASS AND COPPER

468 **A DUTCH BRASS CHANDELIER OF EIGHTEENTH CENTURY DESIGN, late 19th Century**, with a multi baluster knopped stem supporting six slip-in scrolled branches ending in wide drip trays with screw threads to the nozzles, 33cm; 13in £300-500

469 **A DUTCH BRASS FOUR BRANCH CHANDELIER, circa 1900**, with ball and baluster stem supporting 'S' scrolled branches, 33cm; 13in £100-150

470 **A PAIR OF DUTCH BRASS THREE BRANCH CHANDELIERS**, each with ball and baluster stem, 33cm; 13in £200-300

(For colour illustration see page 51)

471 **A BRASS WAX JACK, Dutch circa 1770**, with a pierced and engraved petal base raised on three cabriole legs supporting a slender stem with hinged leaf shape clamp and a bird finial, 19cm; 7<sup>1</sup>/<sub>2</sub>in £800-1,200

For similar see Gentle & Feild: *Domestic Metalwork, revised edition by Belinda Gentle*, plates 8 & 9 on page 220

472 **A BRASS PRICKET CANDLESTICK, Continental early 18th Century**, with domed circular base and baluster knopped stem, high dished drip tray and pricket, restored, 22cm; 8<sup>1</sup>/<sub>2</sub>in £300-400

(For colour illustration see page 51)

473 **A PAIR OF BRASS TAPERSTICKS, circa 1740**, each with dished canted square base rising to double knopped baluster stem and moulded nozzle, 11.5cm; 4<sup>1</sup>/<sub>2</sub>in £1,200-1,600

474 **A MINIATURE PAIR OF BRASS 'HEEMSKERK' CANDLESTICKS, 19th Century**, each with well turned multi baluster stem and with mid wide drip tray, 11.5cm; 4<sup>1</sup>/<sub>2</sub>in £300-400

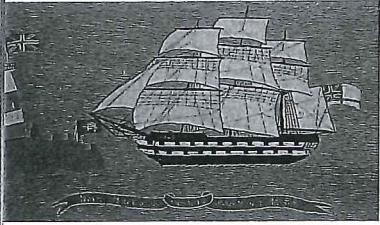
475 **A CAST BRASS TWIN BRANCH WALL SCONCE OF SEVENTEENTH CENTURY DESIGN, 19th Century**, in the form of a cartouche with the Royal cypher of Charles II surmounted by a shell and flanked by pierced foliage and cherubs supporting two scrolled branches with foliate cast nozzles, 44cm; 17<sup>1</sup>/<sub>4</sub>in £300-500

see Ralph Edwards: *The Dictionary of English Furniture*, Sconces fig III for one of the originals in Windsor Castle

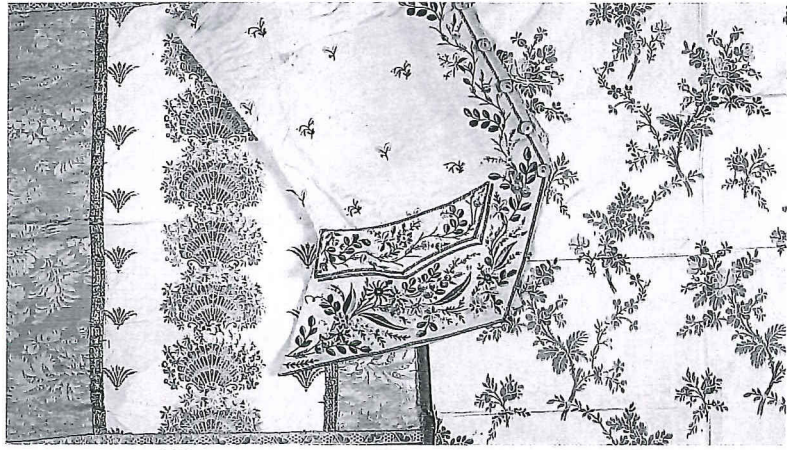
476 **A PAIR OF LATE GEORGIAN BRASS CHAMBER CANDLESTICKS, circa 1820**, each with dished circular base and moulded nozzle with side ejector handle, the two conical snuffers lacking attaching arms, 12.5cm; 5in; and a brass baluster stem candlestick, circa 1820 (5) £250-300

477 **A CONTINENTAL ENGRAVED BRASS PRICKET ALTARSTICK, of 18th Century design**, with triform engraved and foliate scrolled base and multi baluster knopped stem with high dished drip tray, the pricket replaced by a table lamp attachment, 46cm; 18in to drip tray £200-300





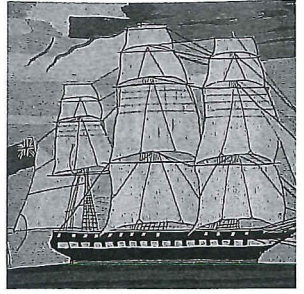
339



330

328

329



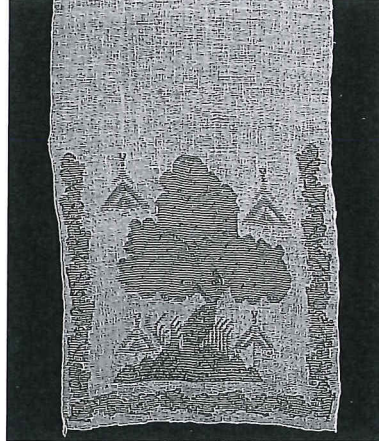
342



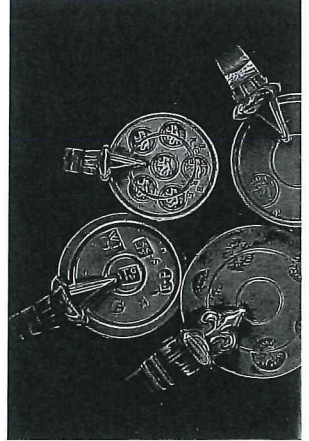
344



346



363



375

373

374

37



367



365



366



368





372

373

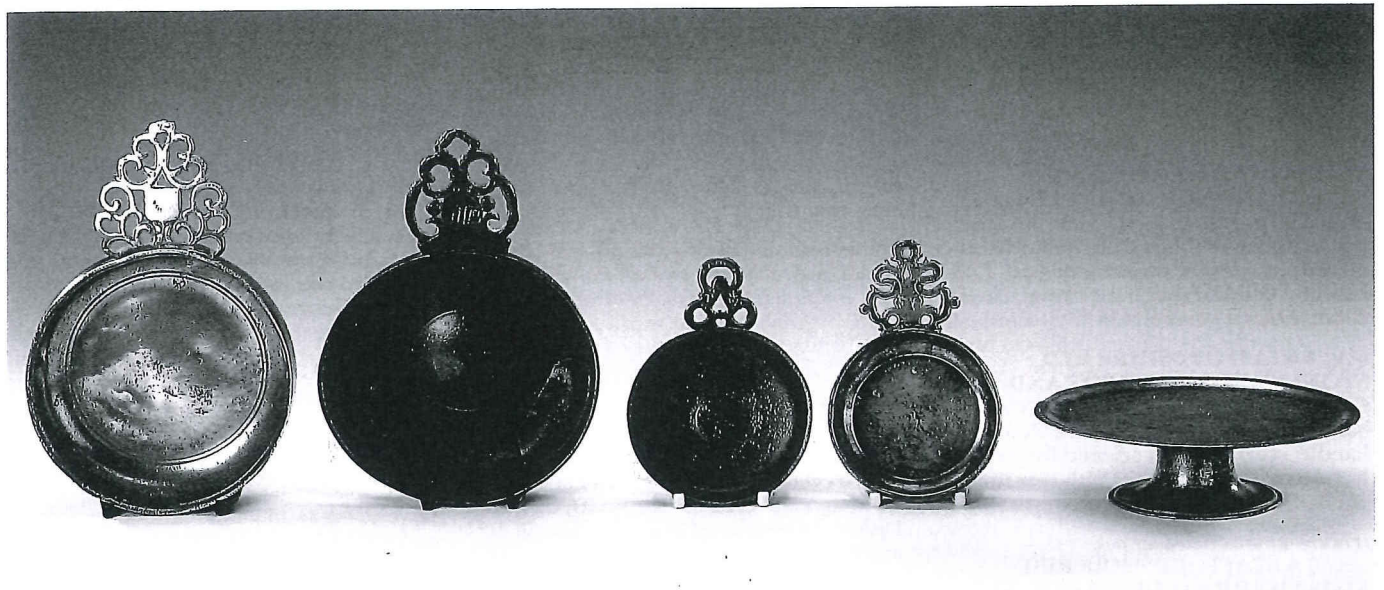
374

375

376

377

378



379

380

381

382

383



385

386

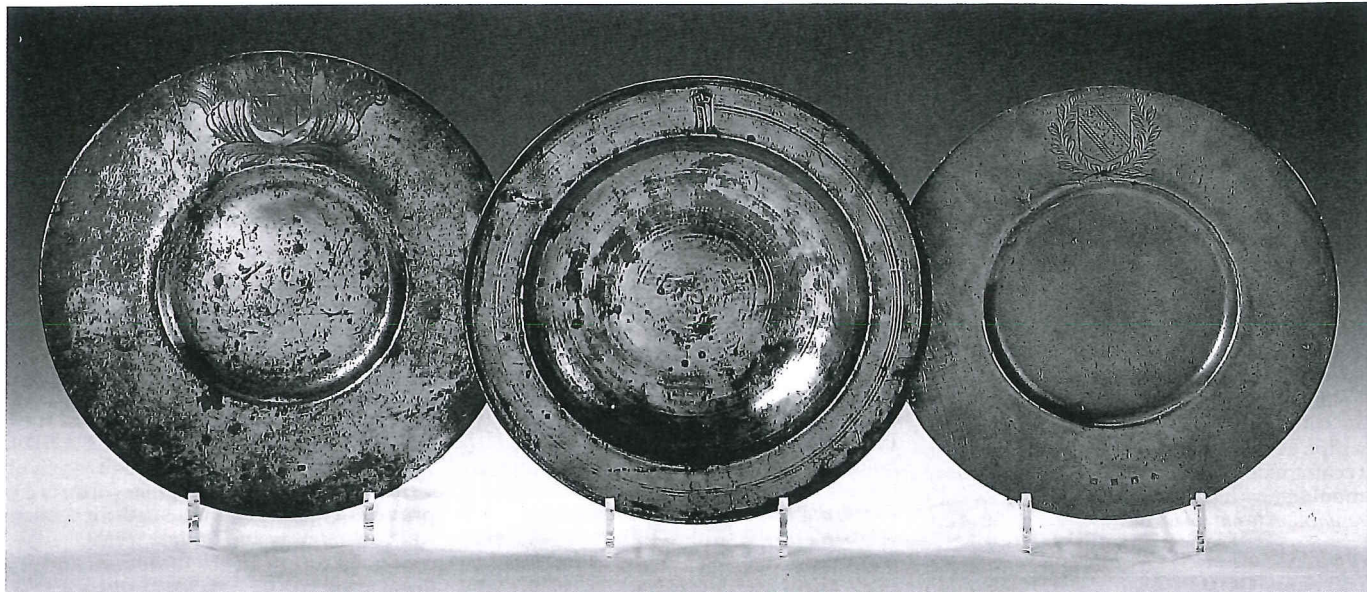
387

388

390

391

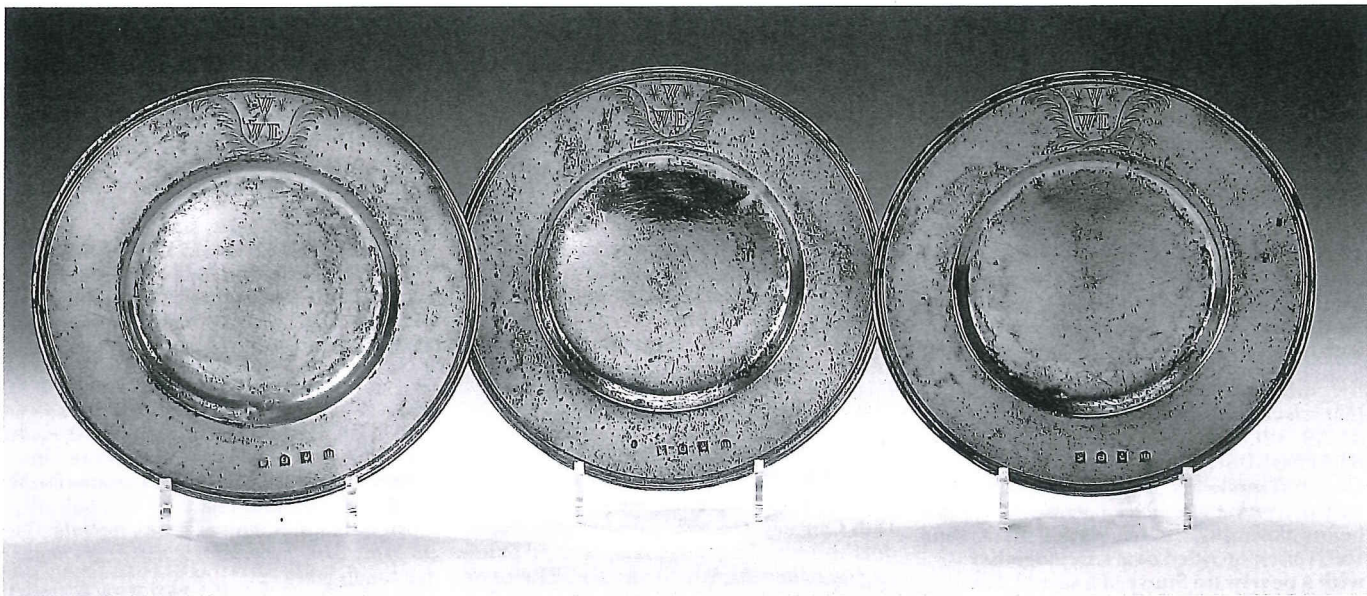




400

402

398



401 (three from a set of six)



405

406

407





403

404



370



389



371

384

369



394

395



396

397



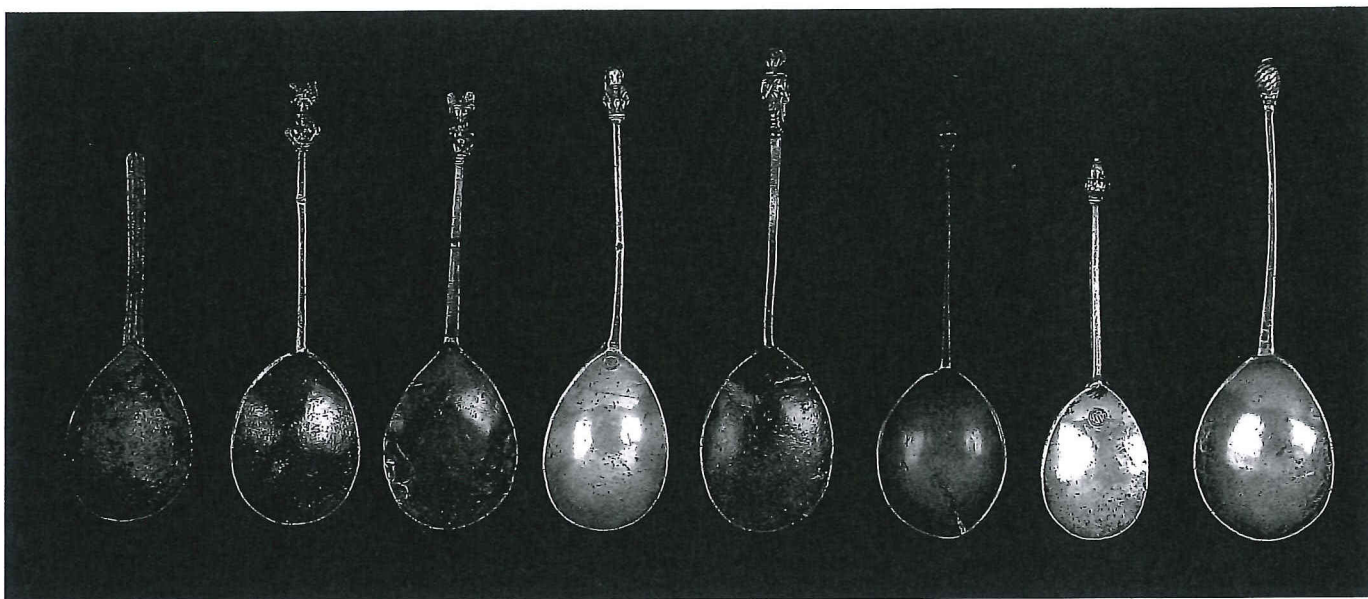


408

399

409

410



411

412

413

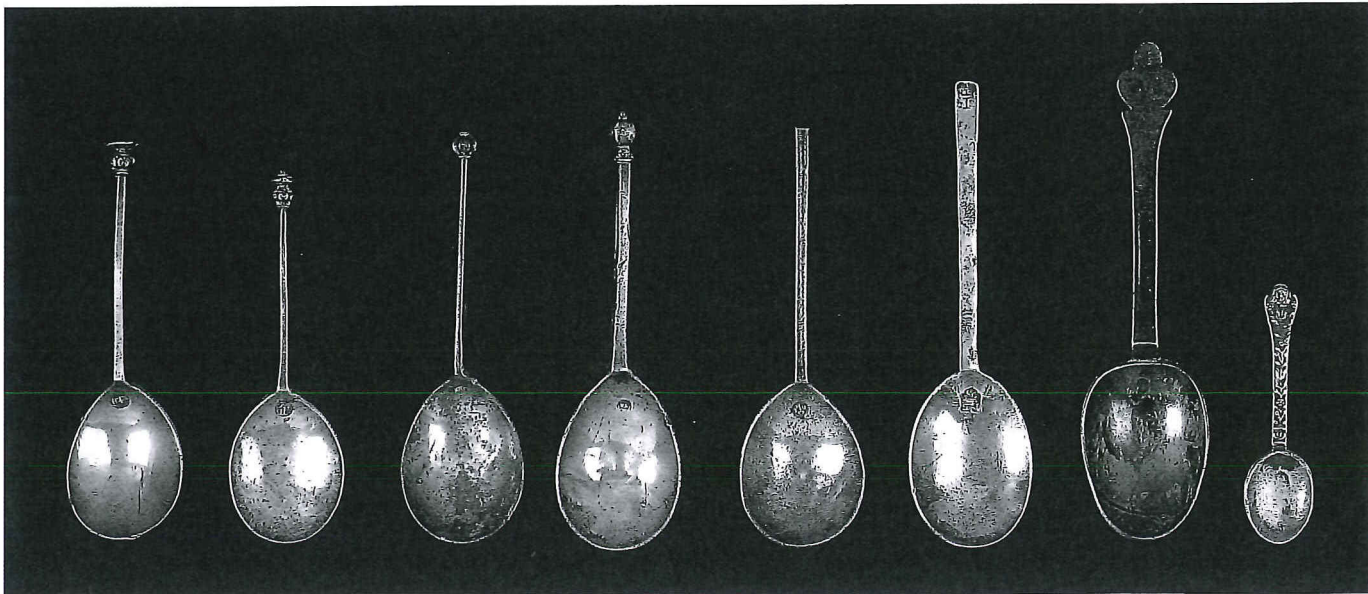
414

415

416

417

418



419

420

421

422

423

424

425

426





433 435 455 456



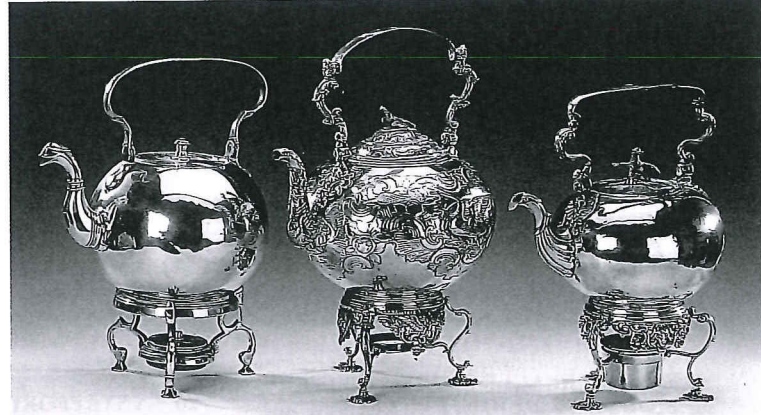
466



484 489 565



501 490 504 471 473



508 509 510



566



568



567



552 (one of a pair) 554 (one of a pair)



564



# SOTHEBY'S

FOUNDED 1744

SALE PRICE LIST PAGE: 1

PRICES INDICATED ARE THE HAMMER PRICE PLUS BUYER'S PREMIUM (ROUNDED DOWN)

SALE TITLE: FURNITURE		SALE DATE: 18 MAR 97 SALE NO. BH7019 SALE CODE NAME: MISSING									
		LOT	AGGREGATE	LOT	AGGREGATE	LOT	AGGREGATE	LOT	AGGREGATE	LOT	AGGREGATE
		301	£207	371	£2300	418	£460	487	£299	565	£368
		302	£172	372	£1667	419	£460	488	£414	568	£1322
		303	£80	373	£1150	420	£460	489	£736	569	£747
		305	£345	374	£1552	421	£299	490	£460	571	£3680
		306	£172	375	£1897	422	£460	493	£230	572	£322
		307	£287	376	£1380	423	£276	494	£207	573	£805
		308	£517	377	£437	424	£322	498	£230	574	£402
		309	£368	378	£276	425	£437	499	£161	575	£2300
		311	£322	379	£506	426	£253	500	£241	576	£460
		312	£460	380	£897	427	£460	501	£1782	578	£644
		313	£598	381	£805	428	£138	502	£253	586	£322
		314	£207	382	£782	429	£207	503	£391	587	£1265
		315	£1380	383	£1092	430	£218	505	£184	588	£414
		316	£1150	384	£5290	431	£86	506	£483	590	£287
		317	£1035	385	£805	432	£310	509	£437	591	£506
		317A	£3220	386	£2012	433	£1265	510	£517		
		319	£126	387	£1150	434	£230	511	£149		
		320	£241	388	£3680	435	£575	512	£195		
		321	£598	389	£1667	436	£322	517	£207		
		322	£230	390	£862	438	£747	519	£115		
		323	£207	391	£920	439	£172	520	£184		
		324	£977	392	£51	441	£149	521	£368		
		325	£713	393	£161	442	£391	526	£34		
		326	£575	394	£13800	443	£172	527	£345		
		329	£230	395	£10350	444	£218	528	£253		
		330	£253	396	£5175	445	£149	530	£299		
		331	£253	397	£4830	447	£345	532	£253		
		332	£345	398	£920	448	£345	533	£253		
		333	£276	399	£4255	449	£943	534	£299		
		334	£172	400	£4830	450	£437	535	£575		
		335	£460	401	£7590	453	£149	536	£126		
		337	£230	402	£4830	454	£172	537	£241		
		342	£1092	403	£713	455	£195	538	£230		
		344	£460	404	£598	459	£529	540	£126		
		346	£621	405	£805	461	£172	542	£299		
		347	£230	406	£1322	462	£184	544	£299		
		349	£184	407	£2645	463	£253	545	£172		
		355	£552	408	£828	467	£230	546	£207		
		357	£138	409	£2127	469	£57	548	£230		
		358	£172	410	£862	470	£115	549	£483		
		359	£184	411	£253	473	£1380	550	£483		
		365	£6210	412	£977	476	£253	551	£759		
		366	£3450	413	£368	480	£368	556	£195		
		367	£2645	414	£506	481	£172	557	£345		
		368	£8050	415	£391	483	£230	559	£241		
		369	£1725	416	£126	484	£391	560	£276		
		370	£4715	417	£414	486	£310	562	£598		
LOT	AGGREGATE										
252	£368										
254	£333										
255	£598										
256	£287										
257	£310										
259	£529										
260	£483										
265	£345										
267	£4140										
268	£529										
269	£103										
270	£529										
271	£414										
272	£69										
273	£172										
274	£230										
275	£287										
276	£345										
277	£230										
278	£529										
279	£333										
280	£230										
281	£241										
283	£345										
285	£805										
286	£207										
287	£230										
289	£414										
290	£506										
291	£172										
292	£356										
293	£368										
294	£115										
295	£345										
299	£345										
300	£207										

PLEASE NOTE THAT THE CURRENCY EXCHANGE RATES QUOTED ARE FOR GUIDANCE ONLY