

GER

Catalogue of the  
Outstanding Collections  
of  
17th and 18th Century  
Pewter, Treen, Bell-metal  
Brass, Copper, Glass, Silver  
and  
Furniture

Formed by  
the late Mr. A. T. (Bertie) Isher

Bruton, Knowles & Co.  
Gloucester

£25.00  
7

*By direction of the Trustees of the late Mr. A. T. Isher*

Catalogue of  
**THE OUTSTANDING  
COLLECTIONS**  
of  
Seventeenth and Eighteenth Century  
**PEWTER**

Flagons, candlesticks, tankards, chargers, plates  
Dishes, chalices, measures, porringers  
Bell-metal—MORTARS, SKILLETS, WOOL-WEIGHTS  
Treen—WASSAIL BOWLS, MORTARS, SPICE GRINDERS  
CAROLINE BRASS CANDLESTICKS, WARMING PANS, TAPER STICKS  
SOVEREIGNS, COINS, GLASS, ELIZABETHAN SILVER CHALICE  
AND

**FURNITURE**

WALNUT TOILET MIRRORS, CANDLE STANDS, CHESTS, BUFFET  
URN STAND, GATE-LEG TABLES, DOLE CUPBOARDS  
BUREAU BOOKCASE  
BRACKET CLOCKS BY JOHN KNIBB AND JOHN SEDDON  
TWO MODEL ENGINES AND A REFERENCE LIBRARY OF BOOKS  
WHICH

**BRUTON KNOWLES & Co.**

will sell by Auction at

**ST. PHILIP AND ST. JAMES PARISH CENTRE  
SUFFOLK SQUARE, CHELTENHAM**

on **TUES. and WED., 27th and 28th APRIL, 1976**  
commencing at 11 a.m. precisely each day

**Private View** : By Card only (obtainable from Auctioneers)  
Friday, 23rd April, from 10 a.m. to 4 p.m.

**Public View** : By Catalogue only  
Saturday and Monday, 24th and 26th April, 10 a.m. to 4 p.m.  
*The Auctioneers regret there will be no facilities for viewing on  
the Sale Days.*

**Catalogues** : Illustrated, Price £1.50 each (post free) of the  
Auctioneers, Albion Chambers, 55 Barton Street, Gloucester.  
Tel. 21267 (8 lines) ; or from branches at Cheltenham, Tewkes-  
bury and Cinderford.

## The Metalwork

### (Iron and Steel)

- 130 1 A pair of iron taper sticks on round bases,  $4\frac{1}{8}$  in. high  
(2)
- 90 2 Five pairs of snuffers, various (5)
- 800 3 TWO BURNISHED STEEL SNUFFERS AND STANDS, similar,  
each with two arms and each fitted cut steel  
snuffers (4)
- 20 4 An iron mortar,  $7\frac{1}{4}$  in. high,  $8\frac{1}{4}$  in. diameter at top
- 240 5 A wrought iron clockwork spit, the half-round brass  
band on the front inscribed *Ed . . . . mty, Witney,*  
*9 in. high overall*
- 30 6 A WROUGHT IRON KETTLE TILTER  
*see Lindsay, page 90, figure 24 A*
- 90 7 ANOTHER, more elaborate
- 90 8 A WROUGHT IRON GRISSET  
*see Lindsay, page 206, figure 7 B*
- 80 9 A 5-bar toaster with pierced brass top and turned  
wood handle
- 320 10 AN EIGHTEENTH CENTURY IRON RUSH-LIGHT AND  
CANDLE HOLDER on a ratchet, 22 in. long, and  
A POT HOOK AND CANDLE HOLDER on ratchet,  
 $15\frac{1}{4}$  in. long (2)
- 80 11 A wrought iron twin rush-light holder and candle-  
stick on circular arched base,  $11\frac{3}{4}$  in. high overall

- 160 12 A rush-light holder on turned oak base, 9 in. high overall, and a wrought iron pot hook on ratchet, 11 $\frac{3}{4}$  in. long (2)
- 85 13 A steel 'cat' with spiral arms, a steel sugar cutter and a wrought iron taper holder, on round oak base (3)
- 300 14 TWO PAIRS OF WROUGHT STEEL EMBER TONGS, various, 17 $\frac{1}{2}$  in. and 14 $\frac{3}{4}$  in. long (2)  
see Lindsay, page 172, figure 1 C
- 220 15 ANOTHER PAIR, the ends fashioned as hands, and TWO OTHER PAIRS, various, 14 $\frac{3}{4}$  in., 18 in. and 17 $\frac{1}{2}$  in. (3)
- 160 16 An iron plate warmer on tripod supports, having a revolving top with four slender spindles, 25 in. high
- 110 17 A miniature cut steel fender, 7 in. long, a ditto pair of tongs, a bronze pipe stopper, Nelson (formerly in the Redfern Collection), and an oval brass snuff box, inscribed John Llewellyn, Feb. 18th, 1903 (4)
- 25 18 Two steel long-handled tools for stamping leather (2)
- 19

e, 9 in. high  
: on ratchet,  
(2)

sugar cutter  
: round oak  
(3)

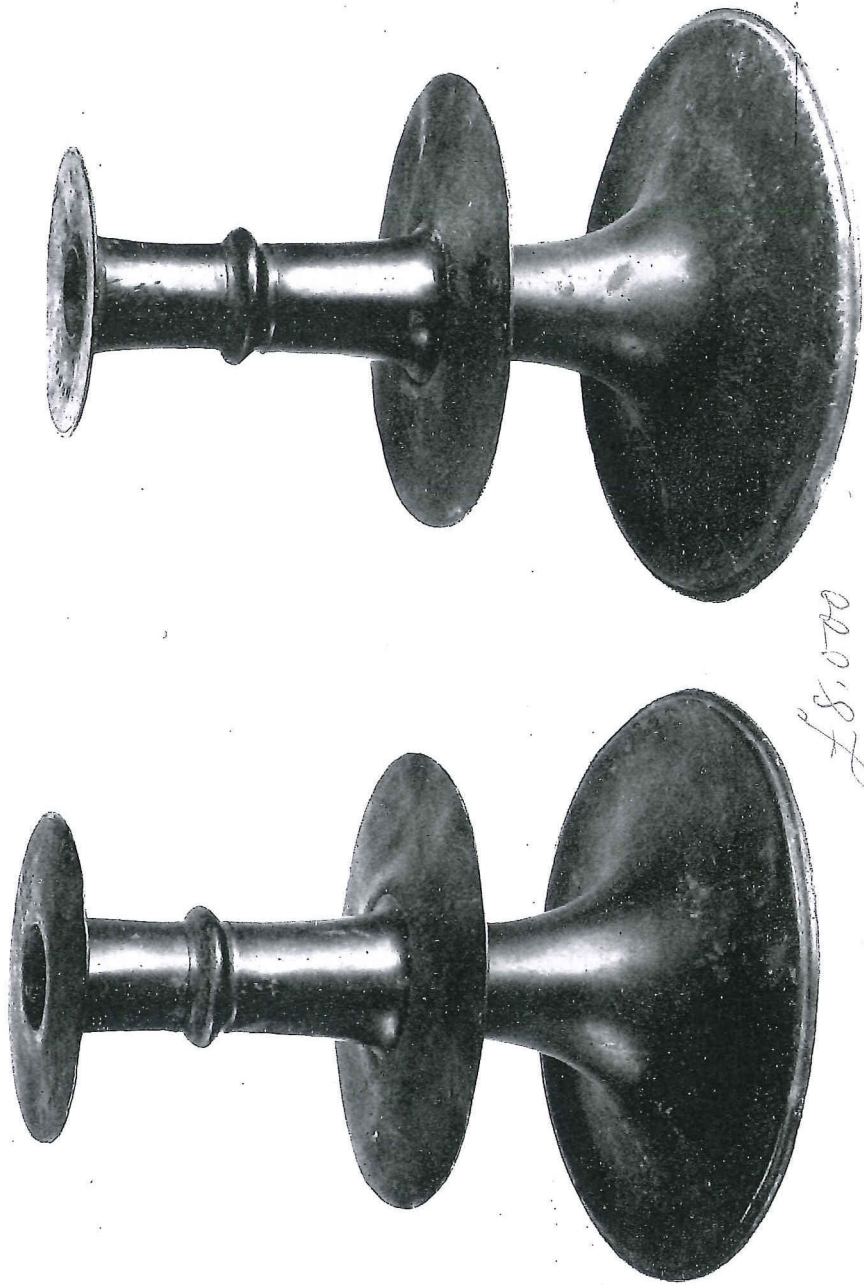
IGS, various,  
(2)

ls, and two  
and 17½ in.  
(3)

s, having a  
dles, 25 in.

litto pair of  
formerly in  
brass snuff  
, 1903 (4)

leather (2)



£8,000

Lor 21

# The Pewter

## (Seventeenth and Eighteenth Century)

### (a) Candlesticks

- 20 A FINE PAIR OF CANDLESTICKS ON SQUARE BASES WITH BALUSTER KNOPPED STEMS AND GADROONS ON THE BASES, by JONATHAN INGLES, each bears a Stuart period Coat of Arms on the top of the base and carries a loose circular sconce on top of the columns, also with gadroons and the touch mark I.I. and date 1670

2,400

one broken  
in half.

$8\frac{1}{4}$  in. high,  $6\frac{1}{4}$  in. square at base  
sconces  $3\frac{1}{4}$  in. diameter  
circa. 1675

(2)

see Cotterell 2525, L.T.P. 19

- 21 A FINE PAIR OF CANDLESTICKS WITH WIDE TRUMPET-SHAPED BASES, CIRCULAR DRIP TRAYS WITH RAISED FILLETS BETWEEN DRIP TRAY AND SCONCE, THE LOOSE CIRCULAR SCONCES WITH 'HALL MARKS,' each bears 'hall marks' and a Stuart Coat of Arms within mantling on top of the base (the sconces odd)

8,000

$9\frac{1}{2}$  in. high,  $8\frac{3}{4}$  in. diameter at base  
circa. 1650 - 1660

(2)

(see illustration)

- 22 A RARE SCALLOPED BASE CANDLESTICK WITH SCALLOPED SHIELD AND COLLAR—the column is fluted and there is a trace of a touch mark

1,000  
Belmont

$6\frac{1}{2}$  in. high,  $4\frac{7}{8}$  in. diameter at base  
circa. 1680

see Cotterell, page 91, plate d

3800  
~~28~~  
 Munday

- 23 A PAIR OF OCTAGONAL-BASE CANDLESTICKS—THE BASES WITH BEADED EDGES CARRYING CAST 'GRAPE-VINE' DECORATION ON THE UPPER PARTS, the collars struck with the owner's initials C.L.T.  
 $7\frac{1}{2}$  in. high,  $5\frac{1}{2}$  in. at base  
 circa. 1680 (2)

1,000  
 Bellamy

- 24 A RARE SCALLOPED-BASE CANDLESTICK WITH BANDS OF REEDING ON THE STEM, WITH DRIP TRAY AND COLLAR, the collar bearing *touch mark Crown over W*  
 8 in. high, 6 in. diameter at base  
 circa. 1680  
 (see illustration)

3,200

- 25 A PAIR OF CANDLESTICKS, THE OCTAGONAL BASES SHIELDS AND COLLARS WITH CABLE EDGES, there are reeded bands on the stems and cast 'grape-vine' decoration around upper part of base, the owner's initial *B* on top of collar with *touch mark W.H.*  
 $7\frac{1}{2}$  in. high,  $5\frac{1}{2}$  in. across base  
 circa. 1675  
 (see illustration)

550

- 26 A ROUND BASE CANDLESTICK WITH CIRCULAR DRIP TRAY AND COLLAR, having a matted decoration on the drip tray and base, *touch mark T.C. on collar*  
 $5\frac{1}{2}$  in. high,  $4\frac{1}{4}$  in. diameter at base  
 circa. 1690

1400

- 27 A CANDLESTICK WITH OCTAGONAL BASE, COLLAR AND SHIELD, WITH THREE BANDS OF REEDING ON THE STEM—THERE IS A 'MATTED' DECORATION ON THE BASE INSTEAD OF THE MORE USUAL GRAPE-VINE—the base bears the owner's initials *C.M.I.*  
 8 in. high,  $6\frac{1}{2}$  in. across base  
 circa. 1680  
 (see illustration)



KS—THE BASES  
' GRAPE-VINE '  
, the collars  
.T.

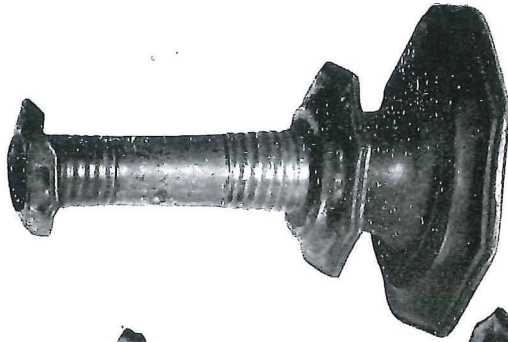
(2)

ITH BANDS OF  
P TRAY AND  
k Crown over

GONAL BASES  
ES, there are  
' grape-vine '  
, the owner's  
mark W.H.

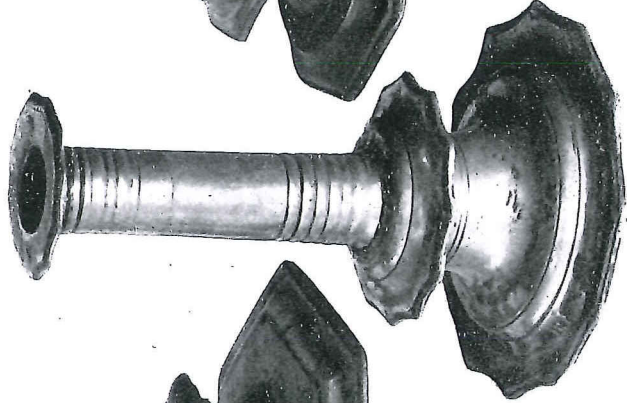
ICULAR DRIP  
ecoration on  
'C. on collar

COLLAR AND  
ING ON THE  
ION ON THE  
RAPE-VINE—  
.I.



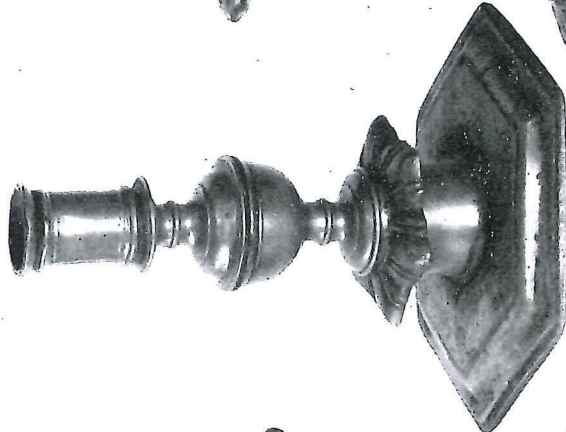
£3,200

Lot 25  
(pair)



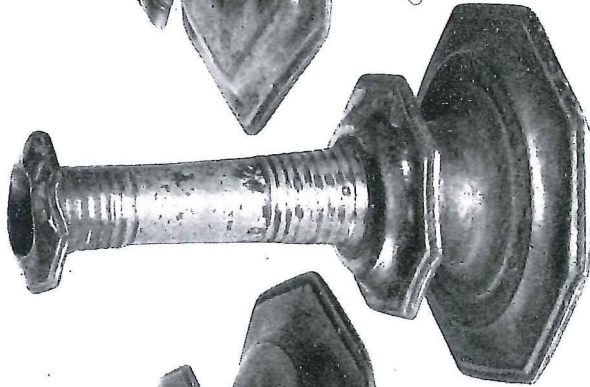
Lot 24

£1,000



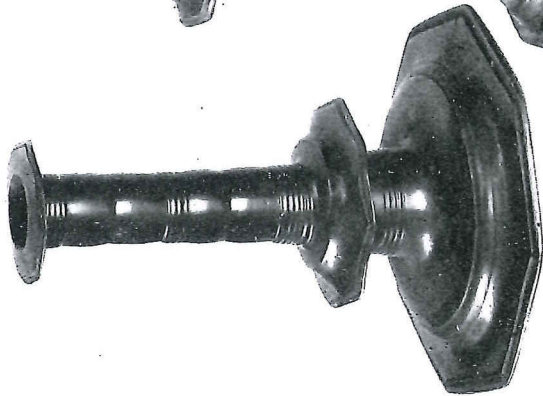
£1,800

Lot 30



Lot 25  
(pair)

£3,200



£1,400

Lot 27

- 900 ✓  
 28 A CANDLESTICK WITH ROUND BASE, DRIP TRAY AND COLLAR, HAVING TWO BANDS OF REEDING ON THE STEM AND REEDING ON THE DRIP TRAY AND BASE—  
*no marks*  
 $5\frac{3}{4}$  in. high,  $4\frac{1}{2}$  in. diameter at base  
 circa. 1660

- 1200 ✓  
 29 A PLAIN CIRCULAR CANDLESTICK WITH WIDE SPREADING MOULDED FOOT, LARGE BALL-KNOP STEM WITH DETACHABLE SCONCE, *bearing hall marks and owner's initials M.B.*  
 $8\frac{1}{4}$  in. high,  $7\frac{1}{4}$  in. diameter at base  
 circa. 1690

- 1800 ✓  
 Redony  
 30 A FINE CANDLESTICK WITH BALUSTER STEM AND GADROONED SHIELD ABOVE THE HEXAGONAL BASE, *touch marks beneath, James Forde with prancing horse,*  
 9 in. high, 7 in. across base

(see illustration)

- 2200  
 31 A CANDLESTICK WITH OCTAGONAL BASE, DRIP TRAY AND COLLAR, ALL WITH NARROW ROPED EDGES AND WITH CAST 'GRAPE-VINE' DECORATION ON THE BASE  
 $9\frac{1}{2}$  in. high,  $7\frac{1}{4}$  in. diameter at base  
 circa. 1680

- 70  
 32 TWO CANDLESTICKS, each on round bases,  $7\frac{1}{2}$  in. high, and a CYLINDRICAL BOX AND COVER,  $3\frac{3}{4}$  in. high (4)

- 15  
 33 A PAIR OF ART NOUVEAU CANDLESTICKS on round bases, 5 in. high (2)

## (b) Chalices

- 35 A CHALICE WITH STRAIGHT TAPERING SIDES, BALUSTER  
STEM AND ALMOST FLAT FOOT

6½ in. high, 3½ in. diameter at base  
circa. 1660

90

- 36 A CHALICE ON A VASE-SHAPED STEM, THE BOWL AND  
BASE ENGRAVED ALL OVER WITH WRIGGLED-WORK  
OF THISTLES AND FLOWERS, touch mark W.N. in a  
beaded circle twice under base

6⅝ in. high, 4 in. diameter at base  
circa. 1640

560

- 37 A CHALICE WITH 'TUMBLER CUP' TYPE SMALL BOWL  
ON A SINGLE KNOPPED STEM WITH WIDE FOOT, bear-  
ing touch mark C.S. with a flower in a beaded circle  
(Charles Sweeting or Charles Seddon)

5¼ in. high, 4 in. diameter at base  
circa. 1665  
see Cotterell 5917, L.T.P. 22

380

- 38 A SOMEWHAT SIMILAR CHALICE BUT WITH A WIDER  
KNOP AND SMALLER BASE

5¼ in. high, 3⅝ in. diameter at base  
circa. 1660

320  
Bradshaw

- 39 A CHALICE ON A SHAPED BALUSTER STEM AND WIDE  
FOOT HAVING THE BOWL WITH ITS ROUNDED BASE,  
TAPERING OUTWARDS TO THE TOP, touch mark T.B.  
with key (unrecorded)

6¼ in. high, 3⅝ in. diameter at foot  
circa. 1660

see Cotterell, page 97, plate a, for illustration of a  
similar chalice

180  
Mundy340  
Mundy

500

180

250  
Bellamy600  
Bellamy

600

LUSTER

- 340  
Mundy
- 40 A CHALICE WITH A 'TUMBLER-CUP' TYPE BOWL ON A SINGLE KNOPPED STEM WITH SLIGHTLY STEPPED FOOT, *touch mark under base illegible*  
6 $\frac{3}{8}$  in. high, 3 $\frac{7}{8}$  in. diameter at base  
circa. 1680

L AND  
-WORK  
J. in a

- 500
- 41 A CHALICE ON BALUSTER STEM WITH ROUND BASE, HAVING REEDING AT BASE, *C.S.W. engraved between a spray of flowers on face of bowl*  
7 $\frac{1}{2}$  in. high, 4 $\frac{3}{8}$  in. diameter at top  
circa. late Seventeenth Century

BOWL  
, bear-  
l circle

- 180
- 42 A CHALICE ON A SINGLE WIDE KNOPPED STEM AND DOME-SHAPED BASE, *unmarked, engraved within a cartouche St. Matthew, Chap. 26, verse 20 and 26 - 30*  
8 $\frac{3}{4}$  in. high, 5 $\frac{3}{8}$  in. diameter at base  
circa. 1700

WIDER

- 250  
Bellamy
- 44
- 43 A CHALICE ON BALUSTER STEM WITH ROUND FOOT  
6 in. high, 3 $\frac{1}{4}$  in. diameter at base  
circa. 1640  
(No. 153 in the Church Congress Exhibition)

WIDE  
BASE,  
: T.B.

## (c) Flagons

n of a

- 600  
Bellamy
- 45 A LARGE JAMES I FLAGON HAVING PLAIN ERECT TYPE SOLID THUMBPIECE, *touch mark (undecipherable)*  
14 $\frac{1}{4}$  in. high, 5 $\frac{1}{2}$  in. diameter at base  
circa. 1610

- 600
- 46 A LARGE CHARLES I FLAGON HAVING KNOPPED 'BUN-SHAPED' COVER, THE THUMBPIECE HEART-PIERCED AND ERECT  
14 $\frac{1}{4}$  in. high, 6 $\frac{7}{8}$  in. diameter at base  
circa. 1635  
(the base of this flagon is holed and damaged)

- 47 A JAMES I FLAGON WITH NOTCHED ERECT THUMBPIECE  
(no marks)  
11½ in. high, 4½ in. diameter at base  
circa. 1620

500  
Shimmell

- 48 ANOTHER FLAGON, ALMOST IDENTICAL TO THE LAST  
(no marks)  
11½ in. high, 5 in. diameter at base  
circa. 1620

650

- 49 A CHARLES II FLAGON, THE HINGED COVER OF 'BEEF-  
EATER'S HAT' TYPE WITH TWIN-CUSPED THUMB-  
PIECE, the flat cover *hall marked and bearing touch*  
*mark A.M. on handle (Anthony Mayers)*  
9¼ in. high, 5½ in. diameter at base  
circa. 1670  
see Cotterell 3160

600

- 50 A RARE LATE SEVENTEENTH CENTURY FLAGON, THE  
HINGED COVER OF 'BEEFEATER'S HAT' TYPE WITH A  
TRIPLE-CUSPED THUMBPIECE and a *touch mark inside*  
*base—an I with an Anchor*, the body is engraved  
and dated with Churchwarden's initials *W.D.*  
*and I.I.*, 1705  
12¼ in. high, 7½ in. diameter at base  
circa 1680

700  
Meady

- 51 ANOTHER RARE FLAGON, THE HINGED COVER OF 'BEEF-  
EATER'S HAT' TYPE WITH TWIN-CUSPED THUMB-  
PIECE, the cover and handle *bearing the touch mark*  
*of the maker, A.I. with the owner's initials I.M. on*  
*handle*  
9¼ in. high, 5½ in. diameter at base  
circa. 1670  
compare Cotterell 5700

600  
Shimmell

THUMBPIECE

TO THE LAST

R OF 'BEEF-  
'ED THUMB-  
*earing touch*  
s)

AGON, THE  
YPE WITH A  
*mark inside*  
s engraved  
tials *W.D.*

OF 'BEEF-  
D THUMB-  
*ouch mark*  
ls *I.M. on*



LOT 59

*£1,000*



LOT 56

*£1,200*

- 52 ANOTHER FLAGON, THE HINGED COVER OF 'BEEF-EATER'S HAT' TYPE WITH TWIN-CUSPED THUMBPIECE and a set of 'hall marks' on the cover—*no touch mark*

*9 1/4 in. high, 5 1/2 in. diameter at base  
circa. 1670*

*to go  
Shemmel*

- 53 A FINE JAMES I FLAGON, THE THUMBPIECE HEART-PIERCED AND ERECT with *touch mark on handle*

*13 1/4 in. high, 6 in. diameter at base  
circa. 1610*

*550  
USA*

- 54 A JAMES I FLAGON WITH 'BUN-SHAPED' HINGED AND KNOPPED COVER and solid erect thumbpiece—*no visible marks*

*14 in. high, 5 1/2 in. diameter at base  
circa. 1610*

*525  
Mandley*

- 55 A DITTO, very similar to the last lot, but with the solid erect thumbpiece ridged at top

*13 1/2 in. high, 5 3/4 in. diameter at base  
circa. 1610*

*650  
USA*

- 56 A CHARLES I FLAGON WITH A 'BUN-SHAPED' HINGED COVER, THE THUMBPIECE HEART-PIERCED AND ERECT, bearing *touch mark on handle—a human figure in an oval*

*13 1/4 in. high, 6 in. diameter at base  
circa. 1630*

*1200*

(see illustration)

- 57 A CHARLES I FLAGON WITH 'BUN-SHAPED' HINGED COVER, A FLAT SOLID THUMBPIECE AND SKIRT BASE  
 $13\frac{1}{4}$  in. high,  $6\frac{1}{2}$  in. diameter at base  
 circa. 1640

450  
 Lewis

62

1000 ✓

- 58 A DITTO FLAGON WITH KNOPPED HINGED COVER AND SOLID ERECT 'BAR AND HEART' THUMBPIECE  
 $10\frac{1}{4}$  in. high,  $5\frac{1}{4}$  in. diameter at base  
 circa. 1640

450  
 Bellamy

63

- 59 A CHARLES I FLAGON HAVING A SLIGHTLY DOMED KNOPPED COVER, A 'BAR AND HEART' THUMBPIECE WITH A MOULDED BASE and having raised fillets on the body, a maker's mark —N on the handle  
 $14$  in. high,  $6\frac{1}{2}$  in. diameter at base  
 circa. 1640

1000

600

(see illustration)

- 60 A SOMEWHAT SIMILAR FLAGON with touch mark R.C. on handle and with owner's initials I.P.C.  
 $13$  in. high,  $6$  in. diameter at base  
 circa. 1640

650

64

700

- 61 A FINE CHARLES I FLAGON WITH 'BUN-SHAPED' KNOPPED COVER, SOLID THUMBPIECE AND MOULDED OVOLU BASE with maker's touch mark E.G. with wine vessel star and flagon on handle  
 $11\frac{1}{2}$  in. high,  $6$  in. diameter at base  
 circa. 1635  
 see Cotterell 5614 (A)

£1000  
 VSA

6

Honor/20

6

300  
 Price-9/6

(see illustration)



PED' HINGED  
SKIRT BASE

D COVER AND  
PIECE

HTLY DOMED  
RT' THUMB-  
aving raised  
—N on the

h mark R.C.  
.C.

HUN-SHAPED'  
ND MOULDED  
k E.G. with

- 1000 ✓
- 62 A FINE STRAIGHT-SIDED 'YORK' FLAGON WITH MULTIPLE REEDING AT CENTRE OF BODY, HAVING A HINGED FLAT COVER WITH ORNAMENTAL DENTICULATIONS AT THE FRONT, A SPRAYED LEAF THUMBPIECE AND 'BOOT-HEEL' TERMINAL TO THE HANDLE *with touch marks on lid and side of handle—with a tulip engraved on the cover*  
9 $\frac{3}{4}$  in. high, 5 $\frac{3}{4}$  in. diameter at base  
circa. 1680

(see illustration)

- 600
- 63 A MID-EIGHTEENTH CENTURY FLAGON WITH DOUBLE-DOMED KNOPPED COVER, A 'CHAIR-BACK' THUMBPIECE AND 'BROKEN' DOUBLE SCROLL-SHAPED HANDLE AND A BAND OF MULTIPLE REEDING ABOVE THE PLAIN FLARED FOOT, *four hall marks at the top of body*  
12 $\frac{3}{4}$  in. high, 6 $\frac{1}{4}$  in. diameter at base  
circa. 1745  
(from Chawleigh Church, Devon)

- 700
- 64 ANOTHER, SIMILAR  
14 $\frac{1}{2}$  in. high, 6 in. diameter at base  
circa. 1745  
see Cotterell, page 110, plate d

- 65 THE BODY OF A BEEFEATER FLAGON (*lid and thumbpiece both missing*)  
9 in. high, 6 $\frac{7}{8}$  in. diameter at base
- Homer/20

- 300 ✓  
Price-Glover ✓
- 66 A FLAGON WITH DOUBLE-DOMED KNOPPED COVER, CORKSCREW THUMBPIECE AND 'BROKEN' HANDLE WITH BANDS OF MULTIPLE REEDING AT TOP OF BODY AND ABOVE THE MOULDED FLARED FOOT, *maker's touch mark I.P. in a shield on the body, and hall marks, the date 1723 stamped on handle*  
13 in. high, 6 $\frac{3}{8}$  in diameter at base  
circa. 1720

- 260
- 67 A JAMES I FLAGON WITH SOLID ERECT THUMBPIECE AND DOMED-KNOPPED LID (a spout has been added at a later date)  
 $14\frac{1}{4}$  in. high,  $5\frac{3}{4}$  in. diameter at base  
 circa. 1610

- 460  
 Hammond
- 68 A CHARLES II FLAGON WITH A FLAT COVER, S-SHAPED HANDLE WITH 'BOOT-HEEL' TERMINAL, A TWIN-LOBED THUMBPIECE WITH A WIDE FLARED FOOT, faint touch mark on handle  
 $13$  in. high,  $7\frac{1}{4}$  in. diameter at base  
 circa. 1680

- 540  
 Allom
- 69 A CHARLES II FLAGON, THE HINGED COVER OF 'BEEFEATER'S HAT' TYPE WITH TWIN-CUSPED THUMBPIECE, maker's touch mark A.I. with hall marks on lid  
 $12\frac{1}{2}$  in. high,  $7\frac{3}{8}$  in. diameter at base  
 circa. 1660

- 450  
 Bellamy
- 70 ANOTHER, SIMILAR TO THE LAST, with touch mark inside base and hall marks on lid and owner's initials R.E.S. stamped on the handle  
 $12\frac{1}{2}$  in. high,  $7\frac{1}{4}$  in. diameter at base  
 circa. 1660

- 1250  
 Munday
- 71 A RARE CROMWELLIAN FLAGON WITH TWO BANDS OF REEDING NEAR THE TOP OF THE BODY AND AROUND THE BASE HAVING A HINGED COVER OF 'BEEFEATER'S HAT' TYPE, A TWIN-LOBED THUMBPIECE, S-SHAPED HANDLE WITH 'BOOT-HEEL' TERMINAL AND WITH A VERY WIDE FLARED FOOT, touch mark I.B. and harp in a beaded circle  
 $9\frac{3}{4}$  in. high,  $7\frac{3}{8}$  in. diameter at base  
 circa. 1650

(see illustration)

UMBPIECE  
en added

S-SHAPED  
A TWIN-  
ED FOOT,

COVER OF  
N-CUSPED  
*with hall*

*mark inside*  
*'s initials*

BANDS OF  
D AROUND  
EFEATER'S  
S-SHAPED  
AND WITH  
*I.B. and*



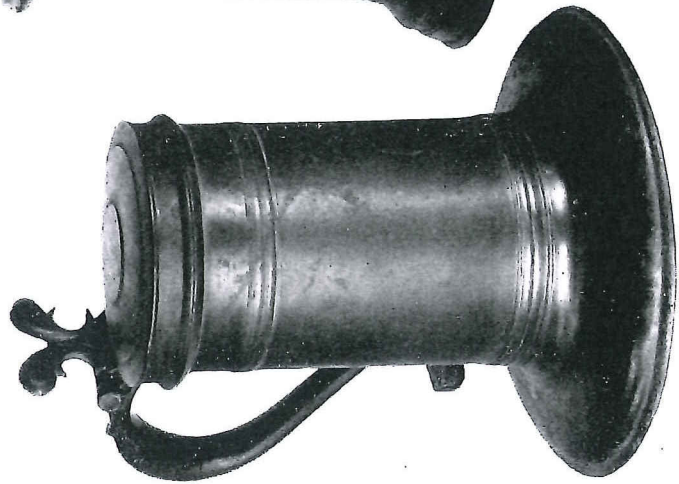
*£1,000*

Lot 62



*£1,000*

Lot 61



Lot 71

*£1,250*

- 1050  
Bellamy
- 72 A RARE PAIR OF FLAGONS WITH HINGED COVERS OF 'BEEFEATER'S HAT' TYPE AND TWIN-LOBED THUMBPIECES, each with hall marks of lions rampant on the the lids, one flagon has a touch mark inside, on the base  
 $9\frac{1}{2}$  in. high,  $5\frac{3}{4}$  in. diameter at base  
 circa. 1670 (2)

- 750  
Bellamy
- 73 A MID-SEVENTEENTH CENTURY FLAGON WITH A HINGED COVER OF 'BEEFEATER'S HAT' TYPE AND A RAM'S HORN THUMBPIECE, the cover and inside base with touch mark I.P. in a diamond lozenge  
 $9\frac{1}{4}$  in. high,  $5\frac{5}{8}$  in. diameter at base  
 circa. 1660  
 see Cotterell 5836

- 600
- 74 A DITTO FLAGON with a hinged cover of 'beefeater's hat' type and a twin-cusped thumbpiece, the covers bearing the hall marks of John Dolbeare of Ashburton  
 $9\frac{1}{2}$  in.,  $5\frac{1}{2}$  in. diameter at base  
 circa. 1660  
 see Cotterell 1407

- 150  
Homer
- 75 A FLAGON WITH TWIN-LOBED THUMBPIECE having wriggled-work of floral motifs all over the body  
 $9\frac{1}{2}$  in. high,  $5\frac{3}{4}$  in. diameter at base  
 circa. 1675  
 (lid missing)

- 550  
Hummel
- 76 A CHARLES II FLAGON WITH A HINGED COVER OF VERY FLAT 'BEEFEATER'S HAT' TYPE, A SCOTTISH TYPE THUMBPIECE WITH A WIDE FLARED FOOT—a touch mark inside, on the base  
 $10\frac{1}{2}$  in. high,  $6\frac{3}{4}$  in. diameter at base  
 circa. 1660

77. A RARE FLAGON HAVING A HINGED COVER with single front projection and a rams-horn type thumbpiece, the body has fine gadroons just beneath the top and above the base with *three hall marks on the cover, touch mark T.B. and chalice inside, on the base*  
 $9\frac{3}{8}$  in. high,  $4\frac{1}{2}$  in. diameter at base  
 circa. 1675

550  
 Lewis

300  
 Mundy

78. A LATE SEVENTEENTH CENTURY FLAGON HAVING A HINGED COVER OF 'BEEFEATER'S HAT' TYPE WITH A LEAF-SPRAY THUMBPIECE AND A FLARED FOOT, *hall marks on the cover*  
 11 in. high,  $6\frac{3}{4}$  in. diameter at base  
 circa. 1680

450  
 Shumel

210

79. A CHARLES I FLAGON WITH 'BUN-SHAPED' COVER, THE THUMBPIECE BAR AND HEART-PIERCED AND ERECT, *with touch mark E.G.*  
 $10\frac{1}{4}$  in. high,  $4\frac{3}{4}$  in. diameter at base  
 circa. 1635  
 see Cotterell 5614 (A)

900  
 Shumel

150  
 Shumel

80. A FINE CHARLES II FLAGON WITH A HINGED COVER OF 'BEEFEATER'S HAT' TYPE, a twin-lobed thumbpiece and a wide flared foot—*owner's initials T.I. on the handle*  
 12 in. high,  $8\frac{1}{2}$  in. diameter at base  
 circa. 1680  
 (lid loose).

450

460

81. A FLAGON WITH TWIN-CUSPED THUMBPIECE AND WIDE BASE WITH FOUR HALL MARKS ON LID, the body engraved with a COAT OF ARMS and 1805 and below : DRINK FAIR DON'T SWEAR  
 GOD SAVE THE KING  
 HERE'S DEATH TO BONEY  
 $9\frac{1}{4}$  in. high,  $6\frac{3}{4}$  in. diameter at base

450

440  
 Mundy

460

## (d) Measures

with single  
umbpiece,  
th the top  
rks on the  
ide, on the

300  
Mundy

- 83 A LATE SIXTEENTH OR EARLY SEVENTEENTH CENTURY  
'BALL AND WEDGE' TYPE BALUSTER MEASURE  
having touch mark T.B. and Harp (?) in beaded  
circle under the base  
7 $\frac{1}{4}$  in. high, 3 in. diameter at base

HAVING A  
PE WITH A  
ED FOOT,

210

- 84 A PINT SIZE DOUBLE-VOLUTE BALUSTER MEASURE WITH  
PROTHEROE STAMPED ON LID AND UNDER THE BASE  
—a touch mark of Father Time with illegible letter  
on lid  
6 in. high, 3 in. diameter at base  
circa. 1740

' COVER,  
CED AND

150  
Stummel

- 85 A GILL SIZE 'BUD' TYPE BALUSTER MEASURE with touch  
mark I.H. on lid  
4 in. high, 2 in. diameter at base  
circa. 1720

COVER OF  
1 thumb-  
initials T.I.

460

- 86 A QUART SIZE 'BUD' BALUSTER MEASURE with touch  
mark I.P. in a beaded circle on lip inscribed 'for ye  
use of New Rumley, 1683'  
8 $\frac{1}{2}$  in. high  
circa. 1683

AND WIDE  
the body  
1805 and

140

- 87 A SMALL 'BUD' BALUSTER MEASURE with W.P. on lid  
4 $\frac{3}{4}$  in. high  
circa. 1700

440  
Belway

- 88 A HALF-GALLON SIZE DITTO (unmarked)  
11 in. high  
circa. 1690

460

- 89 ANOTHER HALF-GALLON SIZE DITTO with crowned W.R.  
on lid  
10 $\frac{3}{4}$  in. high  
circa. 1690

700  
Bellamy

90 A GALLON-SIZE DOUBLE-VOLUTE BALUSTER MEASURE by  
I.F. (John Fasson)  
13 1/4 in. high  
circa. 1750

90  
Mun

150

91 A HALF-GALLON 'BUD' MEASURE  
10 3/4 in. high  
circa. 1760  
(lid missing)

750  
Bell Shumell

92 A GALLON-SIZE 'BUD' BALUSTER MEASURE  
13 1/4 in. high  
circa. 1700

550  
Mun

100

93 A GALLON SIZE 'HAMMERHEAD' BALUSTER MEASURE  
12 in. high  
circa. 1680

150

94 SIX PEAR-SHAPED SPIRIT MEASURES by various makers,  
1 pt. to 1/2 gill  
circa. 1840

28  
Mun

50

95 AN EIGHTEENTH CENTURY UNLIDDED MEASURE—  
similar in shape to a miniature Seventeenth  
Century leather Black Jack  
2 3/4 in. high

300

96 A SCOTTISH TAPPIT-HEN by A. FULLERTON OF PAISLEY,  
1/32 of Imperial gallon  
4 3/4 in. high  
circa. 1820

2  
Mun

97

1  
9

## (e) Miscellaneous

SURE by

- 98 A FINE CHARLES II LOVING CUP with two handles, the body engraved with tulips in 'wriggled-work' with an everted rim and moulded base  
*900 Mundy*  
 $9\frac{1}{2}$  in. across the handles,  $5\frac{3}{4}$  in. diameter at base  
 circa. 1670

- 99 A FINE CHARLES II LOVING CUP WITH TWO ORNAMENTAL SCROLL AND BEADED HANDLES AND PLAIN BULBOUS BODY—touch mark W.I. inside base  
*550 Aschmann*  
 $6\frac{1}{2}$  in. across handles,  $3\frac{3}{8}$  in. diameter at top and 3 in. high  
 circa. 1660

URE

see Cotterell, page 101, plate d, for illustration of almost identical cup

makers,

- 100 A CHARLES II CAUDLE CUP WITH SINGLE ORNAMENTAL SCROLL AND BEADED HANDLE, THE BOWL WITH AN EVERTED RIM—no maker's marks  
*280 Mundy*  
 $2\frac{1}{4}$  in. high,  $2\frac{1}{8}$  in. diameter at top  
 circa. 1680

URE—  
teenth

- 101 A LATE SEVENTEENTH CENTURY DITTO WITH SINGLE HANDLE, THE LOWER HALF OF THE BOWL WITH DIAGONAL GADROONING  
*210 Mundy*  
 $2\frac{5}{8}$  in. high, 2 in. diameter at base  
 circa. 1690

ISLEY,

see Cotterell, page 101, plate (a) for a similar cup

- 102 A LATE SEVENTEENTH CENTURY MINIATURE CAUDLE CUP WITH HALF GADROONED BODY  
*100 Mundy*  
 $2\frac{1}{8}$  in. diameter across top of cup



- 103 A JAMES II SALT OF SPOOL SHAPE, THE INCURVED BODY  
PLAIN WITH REEDING AT WAIST AND BASE  
3 in. high,  $4\frac{5}{8}$  in. diameter at base  
 $3\frac{7}{8}$  in. diameter at top  
circa. 1685

260  
Bellamy

cf. Cotterell, page 130, plates g and h  
(see illustration)

- 104 A PAIR OF QUEEN ANNE PLAIN CIRCULAR TRENCHER  
SALTS—no maker's mark  
 $1\frac{1}{4}$  in. high,  $2\frac{7}{8}$  in. diameter at base  
circa. 1710 (2)

150  
Mundy

cf. Cotterell, page 131, plate c  
(see illustration)

- 105 A SMALL QUEEN ANNE BULBOUS SALT, touch mark I.H.  
under base  
 $1\frac{1}{2}$  in. high,  $2\frac{1}{2}$  in. diameter across top  
cf. Cotterell, page 131, plate a

90

- 106 A LATE SEVENTEENTH CENTURY SALT OF SPOOL SHAPE,  
the incurved body plain with reeding at the waist,  
touch mark I.B. inside base  
3 in. high, 3 in. diameter at base  
circa. 1690

260  
Lewis

- 107 A LATE SEVENTEENTH CENTURY SALT OF SPOOL SHAPE  
WITH GADROONS—touch mark T.B. inside base  
 $2\frac{1}{4}$  in. high  
circa. 1685

300  
Mundy

- 108 AN EIGHTEENTH CENTURY CUBE-SHAPED INKSTAND  
HAVING REMOVABLE TOP ENCLOSING GLASS INKPOT  
WITH FOUR HOLES FOR QUILLS AND WITH TWO  
DRAWERS (ONE A SANDER) UNDER  
 $3$  in.  $\times$   $3$  in.  $\times$   $3\frac{1}{4}$  in., exclusive of cap  
see Cotterell, page 112, plate f

190  
Jellicock

CURVED BODY  
SE

- 50 109 A PAIR OF EARLY TWENTIETH CENTURY CIRCULAR  
INKWELLS with wide flat feet  
9 in. diameter across base (2)

R TRENCHER

- 100 110 A CHAMBER POT  
8 in. diameter bowl, 5 in. high  
circa. 1780

(2)

- 65 111 A 'WELSH HAT' LINER FOR A COMMODE by Birch and  
Villiers—mark on top of rim  
11½ in. diameter, 7½ in. high  
circa. 1800  
cf. Cotterell 430

h mark I.H.

- 55 112 A PAIR OF BULBOUS PEPPER POTS—unmarked  
4 in. high  
early Nineteenth Century (2)

POOL SHAPE,  
at the waist,

- 620 113 A SMALL GEORGE II BULLET TEAPOT WITH TURNED  
FINIAL TO THE LID—touch mark on base  
3¾ in. high overall, 2 in. diameter at base  
circa. 1730

POOL SHAPE  
de base

- 400 114 A GEORGE I TAPER STICK with a ball-turned stem,  
circular collar and spreading base, no maker's mark  
4 in. high, 3 in. diameter at base  
circa. 1720

INKSTAND  
ASS INKPOT  
WITH TWO

- 90 115 A SEVENTEENTH CENTURY LATTEN SEAL TOP SPOON,  
6¾ in. long, and a Fifteenth Century stem and  
knop (only) of a 'Horned Headress' spoon,  
4¼ in. long (2)

- 116 TWO EARLY SEVENTEENTH CENTURY SLIP-TOP SPOONS,  
*one with touch mark H.D. in a beaded circle, circa.*  
 1610,  $6\frac{1}{4}$  in. long, *THE OTHER with touch mark of*  
*three spoons, circa. 1620,  $6\frac{3}{4}$  in. long* (2)  
*cf. Hilton Price, page 41, fourth spoon second row*

120  
 Bellamy

- 117 A QUEEN ANNE TRIFID SPOON with decoration on face  
 of handle and rat-tail back, *by John Shorey*  
 7 in. long  
 circa. 1710  
*see Cotterell 4262*

100

- 118 A heavily corroded spoon with hexagonal knob, 6 in.  
 long, and a slip top spoon,  $6\frac{3}{4}$  in. long (2)

55  
 Bellamy

- 119 AN EIGHTEENTH CENTURY BARBER'S BOWL WITH FLAT  
 REEDED RIM AND HALF-CIRCULAR CUT-OUT FOR  
 NECK, *hall marks on rim*  
 $10\frac{1}{2}$  in. diameter, rim  $1\frac{3}{4}$  in.  
 circa. 1760  
*illustrated Cotterell, page 86, plate C*

220  
 Lewis

- 120 Three old pewter spoons and a ditto sauce ladle (4)

70

- 121 An Art Nouveau matchbox holder on round base  
 with floral decorations  
 $5\frac{3}{4}$  in. diameter at base  
*(Holland impressed below)*

6

SPOONS,  
le, circa.  
mark of  
(2)  
ond row

. on face  
y

op, 6 in.  
(2)

TH FLAT  
UT FOR

le (4)

nd base



£2,500  
Lot 200



Lot 104  
(pair)

Lot 285  
Lot 264

Lot 104  
(pair)

£150

£260  
Lot 103

(f) Plates, Patens, Dishes and  
Chargers

- 60  
133 A LATE SEVENTEENTH CENTURY PLATE with a double reeded rim bearing hall marks in shields, G.M. over lambs (twice) and a lion rampant (twice), stamped I.H. on face  
9 $\frac{1}{4}$  in. diameter  
circa. 1700

- 200  
Bellamy  
134 A SET OF FIVE PLATES WITH GADROON EDGES HAVING THE OWNER'S INITIAL W STAMPED ON FACE OF RIMS, touch mark on base, Jack or Jackson, indecipherable  
9 $\frac{1}{4}$  in. diameter, 1 $\frac{1}{4}$  in. rims  
circa. 1710 (5)

- 580  
Campbell?  
135 A RARE PLATE—THE RIM BEARS A STAMPED OSTRICH FEATHER SURMOUNTED BY A CROWN IN A LONG RECTANGULAR MARK (which may have been the mark of Arthur, eldest son of Henry VII)  
10 $\frac{1}{2}$  in. diameter  
circa. 1500  
This is believed to be one of a hoard of about twenty plates excavated on the site of Guy's Hospital, near London Bridge in 1899

- 200  
136 A BROAD RIM MULTIPLE REEDED PLATE with hall marks W.H. and stars on rim, owner's initials M.E. struck on face of rim  
9 $\frac{3}{4}$  in. diameter, 1 $\frac{5}{8}$  in. rim  
circa. 1660  
(This plate is one of a set from Cotehele in Cornwall from the Mount Edgcumbe Collection)

- 650
- 137 A DEEP WELL PLATE WITH A PLAIN NARROW RIM, touch mark R.G. with a gauntlet in a beaded circle on reverse  
9 in. diameter,  $3\frac{1}{4}$  in. rim  
circa. 1590

- 650
- 138 A BROAD RIMMED PATEN with hall marks on rim  
 $9\frac{3}{4}$  in. diameter, moulded rim  $2\frac{1}{4}$  in.  
circa. 1670  
Exhibited at the Usher Gallery, Lincoln, 1962.  
Illustrated in 'Country Life,' June 24th, 1949.  
This paten was formerly at Saxelby Church,  
Leicestershire, see page 300 'Church Plate of  
Leicestershire' by Revd. A. Trollope

- 450
- 139 A PAIR OF PLATES WITH BROAD RIMS bearing hall marks in four shields on rims  
 $10\frac{1}{8}$  in. diameter, 2 in. wide rims  
circa. 1660 (2)

- 120 ✓
- 140 A PLATE WITH SMALL MULTIPLE REEDED RIM, owner's initials M.K. on rim, touch mark on reverse C.R. with floral spray  
 $6\frac{7}{8}$  in. diameter  
circa. 1680

- 240
- 141 A PLATE WITH DEEP WELL AND MULTIPLE REEDED RIM, having two concentric circles at centre of bowl and hall marks in diamond-shaped shields, D.P. on face of rim  
 $8\frac{5}{8}$  in. diameter, 1 in. rim  
early Seventeenth Century

- 220  
Stammell
- 142 A PAIR OF HAMMERED PLATES WITH NARROW MULTIPLE REEDED EDGES, each bearing owner's initials I.N.S., touch mark on reverse (possibly by one of the Fly family)  
 $8\frac{1}{2}$  in. diameter,  $\frac{1}{2}$  in. rim  
circa. 1690 (2)

14:

100  
Shonel

14

160  
Bellamy

14

160  
Bellamy

1

300  
Wills340  
Bellamy750  
Jellin

IM, touch  
circle on

- 143 A PLATE WITH NARROW MULTIPLE REEDED EDGE and touch mark on reverse, by John Pennington of Tavistock  
8 $\frac{7}{8}$  in. diameter,  $\frac{1}{2}$  in. rim  
circa. 1690

100  
Shedd

im

- 144 A PAIR OF PLATES WITH NARROW MULTIPLE REEDED EDGES by Henry Hoskyn of Launceston, J.L. on reverse  
8 $\frac{5}{8}$  in. diameter,  $\frac{1}{2}$  in. rim  
circa. 1690 (2)

160  
Bellamy

in, 1962.  
th, 1949.  
Church,  
Plate of

- 145 A PLATE with hall marks and touch mark on face and reverse, by Nicholas Dolbeare of Ashburton, the Arms of the Mount Edgcumbe family engraved on rim  
7 $\frac{7}{8}$  in. diameter, 1 $\frac{1}{4}$  in. rim  
circa. 1740  
(the plate split)

160  
Bellamy

all marks

(2)

, owner's  
erse C.R.

- 146 A PLATE WITH MULTIPLE REEDED EDGE AND BROAD RIM bearing hall marks including A.I. (maker) in four shields on rim, the owner's initials G.G. on face  
8 $\frac{3}{8}$  in. diameter, 1 $\frac{5}{8}$  in. rim  
circa. 1660

300  
Willb

DED RIM,  
of bowl  
D.P. on

- 147 A PLATE WITH FLAT BROAD RIM bearing two engraved Coats of Arms on face with four hall marks on rim  
10 $\frac{1}{4}$  in. diameter, 2 $\frac{1}{4}$  in. rim  
circa. 1680  
(heavily corroded)

340  
Bellamy

MULTIPLE  
s I.N.S.,  
the Fly

- 148 A RARE PLATE WITH BROAD RIM, THE RIM ENGRAVED WITH THE ROYAL ARMS OF KING JAMES II, 1685 - 1688, unascribed touch mark on reverse, R.T. in a diamond shield and three other hall marks, owner's initials H.W. on reverse  
2 $\frac{1}{2}$  in. rim  
circa. 1685

750  
Jellinek

(2)

200 149 A PLATE WITH SINGLE REEDED EDGE, ENGRAVED ALL OVER WITH TULIP MOTIFS AND INSCRIBED THOMAS HYETT, CHURCHWARDEN, 1722  
 $8\frac{5}{8}$  in. diameter,  $1\frac{1}{8}$  in. rim  
 circa. 1720  
 (the plate split)

156

220 150 A PLATE WITH NARROW RIM ENGRAVED IN 'WRIGGLED-WORK' WITH TULIPS, ETC.  
 $8\frac{1}{4}$  in. diameter,  $\frac{5}{8}$  in. rim  
 circa. 1690

157

240 151 ANOTHER PLATE, PRACTICALLY SIMILAR TO THE LAST  
 circa. 1690

158

80 152 A PLATE BY SAMUEL DUNCOMB OF BIRMINGHAM WITH TOUCH MARK BENEATH and owner's initials W.H. on rim  
 $8\frac{1}{2}$  in. diameter  
 see Cotterell 1466

153 A PLATE with touch mark below,  $9\frac{5}{8}$  in. diameter, and ANOTHER WITH WAVY MOULDED BORDER and touch mark below,  $8\frac{1}{2}$  in. diameter (2)

15

154 A PLATE WITH NARROW REEDED RIM with four hall marks in the well G.M., the touch mark on the reverse of George Mower of Bristol and Gloucester  
 $8\frac{1}{2}$  in. diameter with  $\frac{1}{2}$  in. rim  
 circa. 1687  
 see Cotterell 3314

16

155 A PLATE WITH NARROW MULTIPLE REEDED RIM with the maker's mark mutilated with owner's initials T.R. and I.T. on back  
 $8\frac{1}{8}$  in. diameter with  $\frac{1}{2}$  in. rim  
 circa. 1700

16



D ALL  
HOMAS

- 156 A PLATE WITH MULTIPLE REEDED RIM *with four hall marks on face including maker's mark S.T., the owner's initials F.A.M. on face*  
9 $\frac{1}{4}$  in. diameter with  $\frac{3}{4}$  in. rim  
circa. 1690

INGLED-

- 157 A PAIR OF PLATES WITH MULTIPLE REEDED RIMS *having four hall marks on face, S.L., fleur-de-lys, lion and leopard's head and with owner's initials R.M.A. on face, possibly by Stephen Lawrance, London*  
8 $\frac{1}{2}$  in. diameter,  $\frac{3}{4}$  in. rim  
circa. 1710  
compare Cotterell 2865 (2)

LAST

WITH  
W.H.

- 158 A SET OF SIX PLATES WITH REEDED RIMS AND WITH FOUR HALL MARKS ON FACE AND TOUCH MARK ON REVERSE I.I., *flanking a baluster-shaped vase, owner's initials I.M.S. on each rim*  
8 in. diameter, 1 in. wide rim  
late Seventeenth Century  
possibly Cotterell 5724 (6)

, and  
touch  
(2)

- 159 A PLATE WITH A SINGLE REEDED RIM BY SAMUEL LEUETT OF BARNSTAPLE  
8 $\frac{1}{4}$  in. diameter, 1 in. wide rim  
circa. 1720  
see Cotterell 2926

r hall  
in the  
cester

- 160 ANOTHER PLATE, SIMILAR, BUT BY A. WILLIAMS OF BIDEFORD  
8 $\frac{1}{4}$  in. diameter, 1 in. wide rim  
circa. 1730  
see Cotterell 5165

th the  
T.R.

- 161 A plate with single reed on rim *by John Dolbeare of Ashburton, with touch mark on the reverse*  
9 $\frac{1}{2}$  in. diameter, 1 $\frac{1}{8}$  in. wide rim  
circa. 1740  
see Cotterell 1408

- 162 A PLATE WITH SINGLE REED ON RIM by *I. Tre . . . . .*  
*Falmouth*  
 9 $\frac{1}{4}$  in. diameter, 1 $\frac{1}{8}$  in. wide rim  
 circa. 1740
- 163 A PLATE WITH SINGLE REED ON RIM by *Sampson Hodge*  
*of Tiverton and with touch mark on the underside*  
 8 in. diameter,  $\frac{7}{8}$  in. wide rim  
 circa. 1710  
 see Cotterell 2356
- 164 A PATEN WITH A MATTED DECORATION AROUND THE  
 EDGE OF THE RIM AND IN THE WELL  
 4 $\frac{1}{2}$  in. diameter,  $\frac{1}{2}$  in. rim  
 circa. 1680  
 (needs repair)
- 70 165 A PATEN WITH A STRAIGHT BOOGE AND FLAT REEDED  
 RIM with touch work  
 3 $\frac{3}{4}$  in. diameter,  $\frac{1}{2}$  in. rim
- 480 166 A RARE PATEN OR SAUCER WITH BROAD RIM BEARING  
 HALL MARKS WITH THE MAKER'S INITIALS E.D. for  
*Edmund Dolbeare of Ashburton, the rim is also*  
*stamped M.E. (Mount Edgcumbe)*  
 (formerly in the Mount Edgcumbe Collection at  
 Cotehele in Cornwall)  
 6 in. diameter, 1 $\frac{1}{4}$  in. rim  
 circa. 1640
- 36 ✓ 167 A PATEN WITH BROAD FLAT RIM AND GADROON EDGE,  
*owner's initials D.W.W. on face, touch mark C.S.*  
*with flower, on reverse*  
 7 $\frac{1}{8}$  in. diameter, 1 $\frac{1}{2}$  in. rim  
 circa. 1640

168 A PATEN OR SAUCER WITH SHALLOW BOOGE AND REEDED  
EDGE (*holed*) with owner's initials *W.S.* stamped  
on rim, touch mark on reverse detrined  
6½ in. diameter, 1 in. rim  
circa. 1620

lodge  
inside

260  
169 A PLATE OR SAUCER WITH MULTIPLE REEDED RIM bear-  
ing touch mark and date under base *I.L.* 1698 with  
flower in a circle  
6½ in. diameter, ⅝ in. rim  
circa. 1700

THE

160  
170 A PLATE WITH DEEP BOOGE AND NARROW RIM with three  
hall marks including maker *H.P.* on rim  
6½ in. wide, ½ in. rim  
circa. 1690

EEDED

480  
171 A FOOTED PLATE WITH EDGE AND CAPSTAN BASE WITH  
GADROONS, illegible touch mark on reverse engraved  
with initials and date beneath the rim *A.P.* 1708  
7⅝ in. diameter, 2¾ in. high  
circa. 1695

RING  
for  
also

in at

600  
172 A FOOTED PLATE WITH MULTIPLE REEDED BORDER  
SUPPORTED BY FOUR EAGLES HEAD FEET ENGRAVED  
WITH A STUART COAT OF ARMS, on rim *John Cosey,*  
*Warden,* 1683, with hall marks on face, two con-  
taining a bell and two *I.P.*  
9¾ in. diameter, 1½ in. high  
circa. 1680

EDGE,  
C.S.

200  
173 A FOOTED PLATE WITH BROAD FLAT RIM RAISED ON  
THREE HEAVY BALL-SHAPED FEET with four hall  
marks on rim in shields, including *R.M.* (the maker)  
and *Buckland*  
10½ in. diameter, 2¾ in. rim  
circa. 1670

- 174 A FINE MARRIAGE PLATE with flat rim and reeded edge, engraved all over in 'wriggled-work' and inscribed "The Gifte is small, the love is all" with the date 1674, the well of the plate is finely engraved with the figure of a Unicorn, *touch mark* S.B. with the Arms of the Pewterer's Company  
 9½ in. diameter, 2 in. rim  
 circa. 1670  
 see Cotterell 5463

1800 ✓

- 175 A MINIATURE FOOTED PLATE, *unmarked*  
 2½ in. diameter, 1⅜ in. high  
 early Eighteenth Century

150

- 176 A DISH ENGRAVED ALL-OVER IN 'WRIGGLED-WORK' WITH TULIPS, ETC., and with the owner's initials G.B. on rim, C.C. on reverse  
 12 in. diameter, 1½ in. rim  
 circa. 1680

240

- 177 A PLATE WITH BROAD FLAT RIM *having touch mark* R.W. on reverse  
 11 in. diameter, 2 in. rim  
 circa. 1675  
 (hole in rim)  
 see Cotterell 6018A

220

- 178 AN ALMS OR ROSEWATER DISH HAVING A FLUTED BOOGE WITH A REGULAR SEQUENCE OF OVAL LOZENGES AROUND THE WELL AND AROUND THE RIM. IN ITS CENTRE IS A RAISED BOSS INSET WITH AN ENAMEL MEDALLION SHOWING THE ARMS OF CHARLES IN GOLD AND BLUE SUPPORTED ON OPPOSITE SIDES WITH THE INITIALS C.R. (CAROLUS REX)  
 17¾ in. diameter, 1⅞ in. rim  
 cf. Cotterell, page 121, plate c, for enamelled medallion

850

id reeded  
ork ' and  
re is all"  
e is finely  
ouch mark  
pany

ED-WORK '  
r's initials

uch mark

TED BOOGE  
LOZENGES  
M. IN ITS  
N ENAMEL  
HARLES IN  
SITE SIDES

enamelled



Lot 187

£1,400

80 179 A FOOTED PLATE WITH REEDED EDGE, unmarked  
 $7\frac{3}{4}$  in. diameter,  $\frac{3}{8}$  in. wide rim  
 circa. 1690

600  
 Roberts  
 180 A SET OF EIGHT PLATES WITH MULTIPLE REEDED RIMS,  
 having four hall marks on rims including maker's  
 initials I.T., owner's initials I.A.H. on face of  
 plates and touch mark of John Trout on reverse  
 $10\frac{1}{4}$  in. diameter with  $1\frac{1}{2}$  in. rim  
 circa. 1690  
 see Cotterell 4819 (8)

500  
 181 A SET OF FIVE PLATES WITH NARROW MULTIPLE REEDED  
 RIMS having four hall marks I.B., lion rampant,  
 harp and crowned Tudor Rose and the owner's  
 initials H.M. on face, the touch mark on the reverse  
 is of James Butcher Junr. of Bridgwater, Somerset  
 9 in. diameter,  $\frac{1}{2}$  in. rim  
 circa. 1695  
 see Cotterell 748 (5)

205  
 182 A BROAD PATEN WITH FLAT RIM having four hall marks  
 including T  
 8 in. diameter, 2 in. rim  
 circa. 1680

240  
 183 A DISH WITH BROAD RIM AND BUMPY BOTTOM having  
 owner's initials E.A. on face and touch mark of  
 I.K. with flagon on reverse  
 $15\frac{1}{4}$  in. diameter,  $2\frac{1}{2}$  in. rim  
 circa. 1680

600  
 184 AN EARLY DEEP WELL PLATE WITH CENTRAL BOSS AND  
 NARROW RIM bearing touch mark R.G. and a  
 gauntlet on reverse  
 9 in. diameter,  $\frac{3}{4}$  in. rim  
 circa. 1590  
 (formerly in the Mount Edgcumbe Collection at  
 Cotehele in Cornwall)

- 185 A PLATE WITH A REEDED RIM bearing touch mark R.D.  
and fleur-de-lys on reverse  
9 in. diameter with  $\frac{3}{4}$  in. rim  
circa. 1695  
see Cotterell 5553

40

190

- 186 A DISH WITH NARROW MULTIPLE REEDED RIM with four  
hall marks in well and having touch mark of Thomas  
King on reverse  
13 $\frac{3}{4}$  in. diameter with  $\frac{3}{8}$  in. rim  
circa. 1685  
see Cotterell 2752

340

300  
Willb

191

- 187 A FINE BROAD RIM CHARGER engraved with a Coat of  
Arms within Stuart mantling on face of rim—  
owner's initials M.S. on rim, unmarked  
21 $\frac{3}{4}$  in. diameter, 4 $\frac{1}{4}$  in. wide rim  
circa. 1675

1.400

Willb

192

(see illustration)

190

- 188 A MASSIVE BROAD RIMMED CHARGER with a thin band  
of incised reeding near the edge of the rim, the  
face of the rim is engraved with the Coat of Arms  
of Earl Beauchamp  
34 $\frac{1}{2}$  in. diameter, 7 $\frac{1}{4}$  in. wide rim  
circa. 1660

6500

THIS CHARGER, together with others, similar, at  
Glamis Castle, IS THE LARGEST ONE RECORDED  
see Note after No. 1, page 18—Catalogue of the  
Worshipful Company of Pewterers—early broad  
rimmed chargers of such massive proportions are  
extremely rare

193

500  
Robinson

194

140

## (g) Porringers

R.D.

four  
mast of  
n—and  
the  
rms

at

the  
oad  
are

- 190 A RARE AND EARLY SEVENTEENTH CENTURY TWO-HANDLED PORRINGER WITH WIDE FLEUR-DE-LYS SHAPED HANDLES, THE HAMMERED BODY WITH FLAT BASE TAPERING UPWARDS  
*300*  
*Wilb*  
 9 in. diameter across the handles  
 2½ in. diameter at base  
 circa. 1600

- 191 A RARE CHARLES II PORRINGER WITH A WIDE CURVED BOWL AND RAISED CENTRAL BOSS IN THE WELL and a double dolphin earpiece  
*200*  
*Lewis*  
 5¼ in. diameter, 2 in. deep  
 circa. 1675  
 (unmarked)

- 192 A CHARLES II TWO-HANDLED DEEP PORRINGER WITH PIERCED HANDLES OF GEOMETRICAL DESIGN, each handle bearing dated touch mark I.I. in a beaded circle with date 1666 and a Crown over T.  
*190*  
 11½ in. across the handles, curved bowl 2¾ in. high  
 circa. 1675  
 see Cotterell 5713 L.T.P. 116

- 193 A PAIR OF GEORGE I SMALL PORRINGERS WITH 'CORONET' PATTERN HANDLES bearing touch marks of Richard Going of Bristol on reverse of handles and crowned initials E.T. on face of handles and having curved bodies with central boss  
*500*  
*Robinson*  
 4½ in. diameter at top of bowl, 1½ in. high  
 circa. 1725  
 see Cotterell 1909

- 194 A MINIATURE PORRINGER OR WINE TASTER having a geometrical designed handle with a loop at the top  
*140*  
 3¼ in. diameter at top, 1¼ in. high  
 circa. 1690



- 195 AN EARLY TWO-HANDLED PORRINGER WITH FLEUR-DE-LYS SHAPED HANDLES, touch mark C.B. with a Bird in a beaded circle on one handle  
 $7\frac{3}{4}$  in. diameter across the handles,  $1\frac{1}{4}$  in. deep  
 circa. 1600

220  
380

- 196 A PORRINGER WITH RAISED CENTRAL BOSS, the pierced handle bearing owner's initial H, touch mark under base, H over key in a beaded circle  
 $5\frac{1}{4}$  in. diameter  
 circa. 1690

260  
Robinson

197

## (h) Tankards

- 198 A PLAIN TANKARD WITH FLAT LID AND 'YORK' TYPE SCROLL THUMBPIECE HAVING PIERCED DENTICULATIONS TO THE COVER, WITH MOULDED BASE AND 'RAM'S HORN' TERMINAL TO HANDLE, touch mark A with King's Head inside base  
 6 in. high,  $4\frac{1}{2}$  in. diameter at base  
 circa. 1670

750  
Shimmell

- 199 A DITTO, practically matching, but with touch mark L.S.  
 6 in. high,  $4\frac{1}{2}$  in. diameter at base  
 circa. 1670

1150  
Shimmell

- 200 A RARE PLAIN TANKARD WITH TWIN-CUSPED THUMBPIECE HAVING AN UNUSUAL LID WITH UPPER PART SLIGHTLY DISHED AND BEARING A RAISED MEDALLION OF A FLORAL DESIGN IN THE CENTRE AND A FINE SWEEPING HANDLE, touch mark G.C. under mounted figure  
 $5\frac{1}{4}$  in. high,  $4\frac{3}{4}$  in. diameter at base  
 circa. 1660

2500  
Mundy

(see illustration)

1,180  
Lewis

1,110

50

- 201 A LARGER TANKARD WITH FLAT LID and bombé thumb-piece with 'ram's horn' terminal to handle having pierced denticulations to the cover with 'wriggled-work' on the lid, *owner's initials C.M. on handle*, the body is engraved with 'wriggled-work' of stylised floral motifs, *touch mark inside base T.C. (?)*  
 $7\frac{1}{2}$  in. high, 5 in. diameter at base  
 circa. 1685

- 202 A TANKARD WITH FLAT LID AND TWIN-CUSPED THUMB-PIECE engraved all over with 'wriggled-work'  
 $4\frac{1}{2}$  in. high,  $3\frac{5}{8}$  in. diameter at base  
 circa. 1670

- 203 A MUG WITH TWO SHIPS, SIXTY-FOUR IN ONE, SEVENTY IN OTHER, ENGRAVED IN 'WRIGGLED-WORK' AND ENGRAVED THOMAS PIERCY, 1759, LE REASONABLE PRISE TO THE DORSETSHIRE  
 $4\frac{1}{2}$  in. high, 3 in. diameter across top  
 circa. 1756

- 204 A TAVERN QUART MUG, engraved underneath 'LORD MORPETH OLD FORD ROAD,' monogrammed *J.B.*  
 $6\frac{1}{2}$  in. high  
 early Nineteenth Century

- 205 An ogee-shaped pint mug, a squat mug, 3 in. high, a circular salt on shaped feet and a miniature porringer with two flat handles,  $4\frac{5}{8}$  in across (4)

206

BRUTON, KNOWLES AND CO.,  
ALBION CHAMBERS,  
55 BARTON STREET, GLOUCESTER.

PRICE LIST.

OUTSTANDING COLLECTIONS

27th and 28th April, 1976

Lot	£.	Lot	£.	Lot	£.
1	130.00	57	450.00	112	55.00
2	90.00	58	450.00	113	620.00
3	800.00	59	1,000.00	114	400.00
4	20.00	60	650.00	115	90.00
5	240.00	61	1,000.00	116	120.00
6	30.00	62	1,000.00	117	100.00
7	90.00	63	600.00	118	55.00
8	90.00	64	700.00	119	220.00
9	80.00	65	120.00	120	70.00
10	320.00	66	500.00	121	6.00
11	80.00	67	260.00	133	60.00
12	160.00	68	460.00	134	200.00
13	85.00	69	540.00	135	580.00
14	300.00	70	450.00	136	200.00
15	220.00	71	1,250.00	137	650.00
16	160.00	72	1,050.00	138	650.00
17	110.00	73	750.00	139	450.00
18	25.00	74	600.00	140	120.00
20	2,400.00	75	150.00	141	240.00
21	8,000.00	76	550.00	142	220.00
22	1,000.00	77	550.00	143	100.00
23	3,800.00	78	450.00	144	160.00
24	1,000.00	79	900.00	145	160.00
25	3,200.00	80	450.00	146	300.00
26	550.00	81	450.00	147	340.00
27	1,400.00	83	300.00	148	750.00
28	900.00	84	210.00	149	200.00
29	1,200.00	85	150.00	150	220.00
30	1,800.00	86	460.00	151	240.00
31	2,200.00	87	140.00	152	80.00
32	70.00	88	440.00	153	45.00
33	15.00	89	460.00	154	50.00
35	90.00	90	700.00	155	55.00
36	560.00	91	150.00	156	65.00
37	380.00	92	750.00	157	180.00
38	320.00	93	100.00	158	280.00
39	180.00	94	150.00	159	60.00
40	340.00	95	50.00	160	40.00
41	500.00	96	300.00	161	40.00
42	180.00	98	900.00	162	60.00
43	250.00	99	550.00	163	50.00
45	600.00	100	280.00	164	55.00
46	600.00	101	210.00	165	70.00
47	500.00	102	160.00	166	480.00
48	650.00	103	260.00	167	360.00
49	600.00	104	150.00	168	160.00
50	700.00	105	90.00	169	260.00
51	600.00	106	260.00	170	160.00
52	600.00	107	300.00	171	480.00
53	850.00	108	190.00	172	600.00
54	525.00	109	50.00	173	200.00
55	650.00	110	100.00	174	1,800.00
56	1,200.00	111	65.00	175	150.00

Holt-cat. in PS Library vermeldt:

27th and 28th April, 1976

Lot	£.	Lot	£.	Lot	£.
1	130.00	57	450.00	112	55.00
2	90.00	58	450.00	113	620.00
3	800.00	59	1,000.00	114	400.00
4	20.00	60	650.00	115	90.00
5	240.00	61	1,000.00	116	120.00
6	30.00	62	1,000.00	117	100.00
7	90.00	63	600.00	118	55.00
8	90.00	64	700.00	119	220.00
9	80.00	65	120.00	120	70.00
10	320.00	66	500.00	121	6.00
11	80.00	67	260.00	133	60.00
12	160.00	68	460.00	134	200.00
13	85.00	69	540.00	135	580.00
14	300.00	70	450.00	136	200.00
15	220.00	71	1,250.00	137	650.00
16	160.00	72	1,050.00	138	650.00
17	110.00	73	750.00	139	450.00
18	25.00	74	600.00	140	120.00
20	2,400.00	75	150.00	141	240.00
21	8,000.00	76	550.00	142	220.00
22	1,000.00	77	550.00	143	100.00
23	3,800.00	78	450.00	144	160.00
24	1,000.00	79	900.00	145	160.00
25	3,200.00	80	450.00	146	300.00
26	550.00	81	450.00	147	340.00
27	1,400.00	83	300.00	148	750.00
28	900.00	84	210.00	149	200.00
29	1,200.00	85	150.00	150	220.00
30	1,800.00	86	460.00	151	240.00
31	2,200.00	87	140.00	152	80.00
32	70.00	88	440.00	153	45.00
33	15.00	89	460.00	154	50.00
35	90.00	90	700.00	155	55.00
36	560.00	91	150.00	156	65.00
37	380.00	92	750.00	157	180.00
38	320.00	93	100.00	158	280.00
39	180.00	94	150.00	159	60.00
40	340.00	95	50.00	160	40.00
41	500.00	96	300.00	161	40.00
42	180.00	98	900.00	162	60.00
43	250.00	99	550.00	163	50.00
45	600.00	100	280.00	164	55.00
46	600.00	101	210.00	165	70.00
47	500.00	102	160.00	166	480.00
48	650.00	103	260.00	167	360.00
49	600.00	104	150.00	168	160.00
50	700.00	105	90.00	169	260.00
51	600.00	106	260.00	170	160.00
52	600.00	107	300.00	171	480.00
53	850.00	108	190.00	172	600.00
54	525.00	109	50.00	173	200.00
55	650.00	110	100.00	174	1,800.00
56	1,200.00	111	65.00	175	150.00

Holt-cat. in PS Library vermeldt:

Panster total £ 96.530

16 candles-ticks 27.450  
 39 flagons 23.435  
 5 tankards 7.300  
 13 measures 4.210  
 plates 23.375

Lot	£.	Lot	£.	Lot	£.
176	240.00	243	190.00	312	1,500.00
177	220.00	244	190.00	314	220.00
178	850.00	245	190.00	315	220.00
179	80.00	246	50.00	316	70.00
180	600.00	247	840.00	317	320.00
181	500.00	248	490.00	318	50.00
182	205.00	249	200.00	319	30.00
183	240.00	250	260.00	320	30.00
184	600.00	251	15.00	321	100.00
185	40.00	252	100.00	322	35.00
186	340.00	253	80.00	323	20.00
187	1,400.00	254	440.00	324	80.00
188	6,500.00	255	380.00	325	50.00
190	300.00	256	150.00	326	25.00
191	200.00	257	290.00	327	50.00
192	190.00	258	200.00	328	20.00
193	500.00	259	110.00	329	30.00
194	140.00	260	150.00	330	20.00
195	380.00	261	40.00	331	50.00
196	260.00	262	60.00	332	30.00
198	750.00	263	600.00	333	40.00
199	1,150.00	264	400.00	334	15.00
200	2,500.00	265	90.00	335	270.00
201	1,800.00	266	70.00	336	480.00
202	1,100.00	267	210.00	337	35.00
203	50.00	268	230.00	338	260.00
204	40.00	269	50.00	339	70.00
205	60.00	270	100.00	340	280.00
207	600.00	271	120.00	341	35.00
208	600.00	272	130.00	342	35.00
209	360.00	273	260.00	343	60.00
210	520.00	274	610.00	345	45.00
211	380.00	275	35.00	346	45.00
212	500.00	276	30.00	347	22.00
213	500.00	277	85.00	348	20.00
214	320.00	278	10.00	349	45.00
215	280.00	279	40.00	350	42.00
216	340.00	281	380.00	351	25.00
217	40.00	282	260.00	352	48.00
218	140.00	283	360.00	353	45.00
219	210.00	284	25.00	354	42.00
220	480.00	285	620.00	355	42.00
221	640.00	286	340.00	356	65.00
222	400.00	287	750.00	357	68.00
223	375.00	288	330.00	358	62.00
224	340.00	289	450.00	359	42.00
225	320.00	290	360.00	360	68.00
226	240.00	291	220.00	361	32.00
227	340.00	292	400.00	362	12.00
228	440.00	293	190.00	363	75.00
229	360.00	294	620.00	364	22.00
230	140.00	295	280.00	365	48.00
231	380.00	296	150.00	366	45.00
232	550.00	297	180.00	367	42.00
233	210.00	298	900.00	368	22.00
234	290.00	299	180.00	369	10.00
235	460.00	300	400.00	370	17.00
236	480.00	301	3,200.00	371	45.00
237	380.00	302	880.00	372	6.00
238	190.00	307	45.00	373	2.00
239	270.00	308	30.00	374	8.00
240	90.00	309	50.00	375)	
241	130.00	310	400.00	376)	130.00

6.5.76. Brown's Tunnel



Two 17th century treen wassail cups and three silver-mounted dipper cups, all in lignum wood, sold from the Isher collection for £2,160.



## 600 lots sold for £190,000

WHEN, in the leisurely early years of this century, young Bertie Isher rode pillion on his father's motor cycle, it was often to accompany him on yet another journey around the countryside in search of antiques.

Mr Isher, senior, was a keen collector. He had a love in particular of all types of early English pewter, iron and steel metalwork, and treen. And this at a time when the general image of a collector was that of someone just a little bit "odd." Pewter candlesticks, dull, grey; funny old bits of dark wood; iron rush holders, even rusty ones — how could these unlovely curios inspire enthusiasm in an age becoming ever more embroiled with up-to-date, mass-produced items?

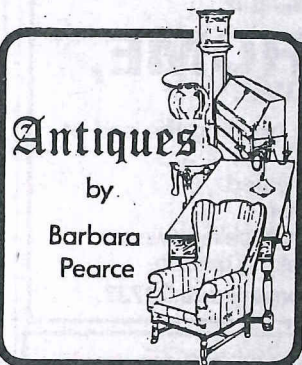
Nevertheless, the Ishers persevered. When the father died, the son continued, until his own recent death, adding to the family assemblage. And last week, their two-generation collection was quietly dispersed, in their home town of Cheltenham, by a firm of local fine-art auctioneers, Bruton, Knowles and Co., in what proved to be the most outstanding sale in my experience, and in the experience of many leading dealers and collectors in attendance to whom I spoke.

ally enough, reflected the rarity and sheer desirability of many of the items on offer. Like the single enormous pewter charger, 17th century, 34 inches in diameter, and engraved with the arms of the Earl of Beauchamp. This sold for no less than £6,500. It was bought by Bertie Isher in 1947 for under £60 from a local dealer! And 17th century pewter candlesticks selling between £2,000 and £4,000, the best pair going for a staggering £8,000.

Two fine brass-topped warming pans of Charles I period made £820, both engraved, one with a humorous "WHO BURNED YE BED NOBODE." A small lidded pewter tankard of Cromwellian date made £2,500, an old green glass wine bottle sealed and dated 1756, bearing "G. Jeffery, Vicar of Lincolnh," reaching £260.

Much of this fantastic Isher collection was previously packed away in old cardboard boxes. There simply wasn't room to display everything in the modest terrace house in Cheltenham where he and his father before him had lived. When the war came, a pit was dug at the rear of the house and much of the collection stored there for safety.

But there was always room to display some of Bertie's



times succumbing at the most improbable moments, and sending their bids to figures that left the saleroom gasping. A nice iron toasting fork, for instance, silver mounted at the handle, which rocketed to £360. Or the small hanging food cupboard, with a single narrow drawer, selling for no less than £1,800. And a pair of very late 18th century brass candlesticks at an amazing £600.

# 600 lots sold for £190,000

WHEN, in the leisurely early years of this century, young Bertie Isher rode pillion on his father's motor cycle, it was often to accompany him on yet another journey around the countryside in search of antiques.

Mr Isher, senior, was a keen collector. He had a love in particular of all types of early English pewter, iron and steel metalwork, and treen. And this at a time when the general image of a collector was that of someone just a little bit "odd." Pewter candlesticks, dull, grey; funny old bits of dark wood; iron rush holders, even rusty ones — how could these unlovely curios inspire enthusiasm in an age becoming ever more embroiled with up-to-date, mass-produced items?

Nevertheless, the Ishers persevered. When the father died, the son continued, until his own recent death, adding to the family assemblage. And last week, their two-generation collection was quietly dispersed, in their home town of Cheltenham, by a firm of local fine-art auctioneers, Bruton, Knowles and Co., in what proved to be the most outstanding sale in my experience, and in the experience of many leading dealers and collectors in attendance to whom I spoke.

Why "outstanding?" Simply because of the numbers of extremely rare items on offer. Seventeenth century pewter flagons by the score, candlesticks and tapersticks likewise, together with magnificent treen of the same period, and a host of other 17th and 18th century bell-metal, brass, iron and steel wares and choice antique furniture. In all, some 600 lots, sold in a two-day sale, in a packed church hall, for a staggering total of almost £190,000.

Such a collection will never be seen again under one roof. I was told by a leading pewter dealer that there is no collection anywhere in existence today — and never can be again — remotely comparable with the Ishers'.

The prices realised, natur-

ally enough, reflected the rarity and sheer desirability of many of the items on offer. Like the single enormous pewter charger, 17th century, 34 inches in diameter, and engraved with the arms of the Earl of Beauchamp. This sold for no less than £6,500. It was bought by Bertie Isher in 1947 for under £60 from a local dealer! And 17th century pewter candlesticks selling between £2,000 and £4,000, the best pair going for a staggering £8,000.

Two fine brass-topped warming pans of Charles I period made £820, both engraved, one with a humorous "WHO BURNED YE BED NOBODE." A small lidded pewter tankard of Cromwellian date made £2,500, an old green glass wine bottle sealed and dated 1756, bearing "G. Jeffery, Vicar of Lincolnh," reaching £260.

Much of this fantastic Isher collection was previously packed away in old cardboard boxes. There simply wasn't room to display everything in the modest terrace house in Cheltenham where he and his father before him had lived. When the war came, a pit was dug at the rear of the house and much of the collection stored there for safety.

But there was always room to display some of Bertie Isher's treen, with other selected and favourite items. Alongside his choice, rare pewter and other early metalwork, superb creations of the 17th century English wood turner took their rightful place. Engine-turned ornamented, of quite exceptional skill, wassail cups and covers in lignum wood, plus mortars, loving cups, spice mills, etc. And for sheer weight and impressiveness, among all the treen on offer, a handsome 17th century wine cistern, 14 inches wide and around 18 inches high, set with four silver plaques, took precedence. This sold for £4,400 to a London dealer.

As at all such outstandingly interesting sales, there were the odd attacks of auction fever, with vic-



Antiques

by

Barbara

Pearce

tims succumbing at the most improbable moments, and sending their bids to figures that left the saleroom gasping. A nice iron toasting fork, for instance, silver mounted at the handle, which rocketed to £360. Or the small hanging food cupboard, with a single narrow drawer, selling for no less than £1,800. And a pair of very late 18th century brass candlesticks at an amazing £600.