

GED

SOTHEBY'S

34 & 35 New Bond Street, London W1A 2AA

CATALOGUE OF  
BRITISH AND  
CONTINENTAL  
PEWTER  
AND METALWORK

Day of Sale  
Thursday, 15th November, 1979  
at 11 am precisely

CATALOGUE OF  
BRITISH AND CONTINENTAL PEWTER  
AND METALWORK

Day of Sale  
Thursday, 15th November, 1979 at 11 am precisely

ALL SALES SUBJECT TO THE CONDITIONS PRINTED  
IN THIS CATALOGUE

EUROPEAN PEWTER

1 A Continental Plate with single-reeded rim initialled IMP 1808, 19.5cm.; and a Plate with wavy-edged rim, 2.3cms., late 18th Century (2)

2 A Wall Pocket or 'Benitier', the moulded backplate with applied mask, the funnel-shaped bowl with cone knob, 21cm.; and another, the beaker-shaped pocket with reeded decoration, 15cm. (2)

3 A Continental Carafe, the fluted bulbous body with tall cylindrical neck and slip-on cover, 30.5cm. high, probably 19th Century (finial wanting)

4 A Central European Coffee Pot of cylindrical form, cast with a band of swags and palmettes, the domed cover with foliate decoration, 20.5cm., and another with two bands of similar decoration and faceted body, 19.5cm. overall, both first half 19th Century (2)

5 A Continental Dish with reeded border to the upcurved rim, the reverse engraved IMB 1769 together with makers marks, 38.1cm. diam., 2nd half 18th Century

6 A pair of Plates with reeded wavy-edged rims initialled BG on reverse, 22cm. diam.; another with touchmark of GAC, 21.5cm.; and two others, larger, 6.5cm., all 18th Century (5)

7 A Continental Oil Lamp with glass oil reservoir screwing into a faceted wick tray with small hinged cover, all raised on baluster stem, having side handle and saucer base, 35cm. high, 19th Century

8 Another Oil Lamp of similar outline but with reeded cylindrical stem on trumpet mouth base, 37.5cm. high, circa 1800

9 A late lidded Stitze raised on three winged cherub feet, the tapering body applied with pseudo-armorials and an arched recess below the spout containing a landsknecht with spear and crossbow, 34.5cm. overall

10 A Continental Altar Candleholder with knopped opposed baluster stem and triform base cast in relief with masks and monsters enclosing oval cartouches one engraved S.L. 1672, the whole raised on claw and ball feet, 40.5cm. high, late 17th Century (the pricket wanting, having been converted to electricity)

11 A North Italian Dish by BV, the rim richly embossed with fruit, the well chased with a mask within a border of interlace, 28.5cm., probably Venetian or Piedmontese, 18th/19th Century

12 A DUTCH FLAGON of bulbous form with cylindrical neck, the shallow domed lid with mascaron thumbpiece, 26cm., probably 18th Century

13 A Flemish Dish with single reeded rim stamped at top ADM\*AI\*1797, touchmarks on reverse, 32cm. diam., late 18th Century

14 A Flemish Tureen Base with cylindrical sides and rectangular handles, the base with owner's initials AMM and touchmark of the maker HIPC, 36cm. across handles, circa 1800

15 A Continental Dish with slightly upcurved rim initialled ?PT at top and reeded border, touchmarks ad verso, 38.3cm. diam., probably Low Countries, 18th Century

16 A small Swedish Plate with beaded border to the rim made by Carl Gustav Wigholm of Gäule, 16.2cm. diam., mid 19th Century; and a Spoon (2)

17 A flat circular Flemish Straining Plate pierced with holes in concentric rings and stamped with an indistinct Bruges maker's mark, 24.5cm., 18th Century

18 A PEAR-SHAPED WINE PITCHER with spout at front and dished cover with plain erect thumb-piece, touchmarks on base, 27cm. high, Flanders, circa 1800

19 A French Bowl with slight boss in centre, the single-reeved rim stamped with touchmarks dated 1749 together with owners initials IS, 23.3cm. diam., 18th Century

20 A similar Bowl, the rim inscribed P. Bouchet, 20cm. diam., 18th Century

21 A Normandy Pichet of quart capacity and typical shouldered form with heart-shaped cover and twin acorn thumbpiece, 21cm. overall, 18th Century

22 A cylindrical French metric Measure of double litre size by Albert (et Mulié ?) of Lilte, the circular cover (now adrift) numbered 1 and falling inside a sloping collar, initials VL at front, 25.5cm., mid 19th Century

23 A NORMANDY FLAGON of pot capacity and typical shouldered form, the heart-shaped cover with twin-acorn thumbpiece, 25.8cm. overall, circa 1800

24 A N.E. French Pitcher of baluster form with spout at front from the Artois or Flanders region, the domed cover with shell thumbpiece, the base with eagle touchmark, 24cm. high, circa 1800

25 A lidless Normandy Measure of  $1\frac{1}{2}$  pints (Jersey) capacity made for use in the Channel Islands, the shouldered body with heart-shaped collar bearing Jersey GR verification seal, 16.8cm., circa 1800

\*\* Illustrated and discussed by Woolmer, p. 63. Pl. XX, op. cit.

26 A FRENCH WINE PITCHER (or Broc de marchand de vin) tapering in toward the foot and neck and enlivened by bands of raised reeding at intervals, the D-shaped handle ribbed for hand grip on the inside, the lip stepped for a detachable cover (now wanting), 31.5cm., Paris, mid 19th Century

27 A SWISS FLAGON or Stitze of tapering form by Bernhard Wick of Basle, the heart-shaped lid centred by an embryo cone knob, the erect thumb-piece and handle both with ridged baluster terminals, 29cm., 1st half 18th Century

(See Plate I)

28 A NORMANDY (FALAISE) FLAGON or Pichet of quart size, the baluster-shaped body enlivened with bands of reeding around neck and upper waist, the heart-shaped cover stamped with owner's initials PM together with Falaise common quality mark dated 1778 and *maker's touchmark*, twin-acorn thumbpiece, 24.5cm., *last quarter 18th Century*

\*\* A pot capacity Pichet of similar type and by the same maker is illustrated fig. IV, p. 23 of S. Woolmer's *Pewter of the Channel Islands*

(See Plate I)

29 A NORMANDY PICHET of typical shouldered form and pot capacity, the heart-shaped lid with twin-acorn thumbpiece, 26.5cm., *late 18th Century*

30 A Swiss (Valais) Kelchkanne of typical shouldered form *probably by Alvazzi and Castel* (touch very indistinct), the heart-shaped lid with twin-acorn thumbpiece, 25cm., *early 19th Century*

31 A GOOD BERNESE STEGKANNE or SPOUTED WINE FLAGON *made by Abraham Ganting*, the bulbous body on hollow skirt base having incurved neck with cylindrical collar surmounted by a domed cover with acorn knob and plumed thumbpiece, the long frontal spout with small hinged lid and supported by a relief-cast arm attached to the collar, the cover stamped with touchmark, quality marks and shooting prize mark, the belly engraved: Vereht Wirt und Grichtsäs Jacob Lampen von St. Staffen; Gewünen Wacht-Mr. Peter Schletti von Zweisinen, 1741, 31cm. overall, *circa 1741*

\*\* The inscription seems to translate: "Presented by the host and judge Jacob Lampen of St. Staffen; won by sergeant-major Peter Shletti of Zweisinen."

(See Plate II)

32 A FRENCH PLATE by V. Corois of Paris, the semi-broad rim with raised double-reeded border stamped with initial R, the reverse with maker's touch dated 1662 and Paris control mark dated 1693, 24.5cm. diam., *late 17th Century*

33 A SWISS PLATE by Leonard I. Bourrelrier of Geneva, the semi-broad rim with single reeded border, the reverse with touch dated 1676, crowned quality mark and engraved owner's initials HT, 22cm. diam., *circa 1700*

34 A SWISS FLAGON OR MEASURE (Massartige Kanne) by the unnamed maker P.I.Z. of Martigny, the body of truncated cone shape with wider collar and heart shaped cover with twin acorn thumbpiece, the cover engraved IB . CR, 24.5cm. overall, *probably mid 18th Century*

35 A BULBOUS SWISS FLASK with long cylindrical neck and small screw-on lid stamped with touchmarks, *made by Franz Ludwig Naffzger of Thun*, the shoulder inscribed: +1 $\frac{3}{4}$ , 30cm. high, *2nd half 18th Century*

35A ANOTHER SWISS FLASK of similar general outline, but without lid, the neck flaring slightly towards lip and stamped with the touchmark of Heinrich Bosshart of Zürich, 26.8cm., *2nd half 18th Century*

36 A STITZE of typical tapering form with shaped spout at front and domed cover set with a relief-cast medallion, the drum engraved: Johann Christoph Wagner 1797 within floral sprays, the whole raised on three ringed ball feet and surmounted by thumbpiece *en suite*, touch on handleback, 34.3cm., *probably German or Austrian, late 18th Century*

37 An Altar Candleholder with knopped baluster stem and pricket at top, raised on shaped hollow triform base and scroll feet, *Probzinn touchmark*, 62cm., *probably Austrian, 2nd half 18th Century*

38 A SALZBURG GUILD TANKARD, dated 1783, cast with rococo straight-fold decoration and having wrythen thumbpiece, the lid now set with a gilt copper medallion depicting trade implements and the body inscribed with the names of six members with their towns of origin, a crowned double-headed eagle with sceptre mark struck on cover wedge, 23.5cm., 18th Century; together with a circular Base Plate engraved with similar trade implements, 15.5cm. diam., also 18th Century

\*\* Another Salzburg Tankard of similar shape is illustrated in Haedeke's *Zinn*, ill.438, p.302

(See Plate II)

39 AN AUSTRIAN FLAGON or Stütze by *CHS of Feldkirsch*, the tapering drum inscribed at front *HIG CRG* with date 1766, the heart-shaped cover later mounted with a baroque shield depicting a saint supported by an armoured figure, 36.5cm. overall, 18th Century

40 A Saxon Coffee Pot by *Johann Carl Breitfeld III of Annaberg*, the swelling body with long spout and high looped handle, the domed lid with acorn finial, 26cm., circa 1800

41 An oval plain-rimmed continental Serving Dish with fixed baluster-moulded handles, 51.8cm. long, probably North German, 2nd half 18th Century

42 A German Dish by *Carl Reutlinger of Frankfurt*, the centre of the well engraved with a basket of flowers, the single-reeded rim marked *F. S. Abt'ler*, 31.5cm. diam.; and a rimless Bowl, 20.9cm. diam., late 18th Century (2)

43 A Saxon Wall Salt by *Gottlieb Dostmann of Zschopau or his son* (Hintze: 1354, Vol. 1), the D-shaped container with hinged cover and moulded back plate engraved with floral motifs and crowned dated initials *SMR* 1795 at front, 24.8cm. high, 18th Century

44 A cylindrical German Tankard with domed lid inscribed: *C. B. Rutlof* 1763 and ringed ball thumbpiece, the drum engraved with winged cherubs supporting a crowned cartouche with inscription, *triple touchmark dated 170?* inside lid, 32.7cm. overall

45 A SAXON PRETZEL BAKER'S GUILD PLATE by *Daniel Gottlob Reinhard* of *Zittau*, the rim decorated with relief-cast rococo shell scrolls within a petal-lobed border and engraved at top with guild armorials together with a presentation inscription from the Master *Johann Weber* dated 1800, the names of further Masters below, 25cm. diam., circa 1800

\*\* Hintze records a very similar Baker's Guild Plate by *Reinhard* dated 1799 in the Stadtmuseum, *Zittau*

(See Plate I)

46 A SOUTH GERMAN TANKARD of slightly tapering form engraved at front in a wreath '*Andreas Putning Weinträger* 1769', the cover set with a relief-cast medallion showing the townscape of Nuremberg and having ringed ball thumbpiece, the hollow handle (now split) with shield terminal, 24cm., 2nd half 18th Century

47 A barrel-shaped Tankard with domed lid and pierced thumbpiece by *Schubert of Augsburg*, 17.2cm., late 19th Century

48 A NORTH GERMAN GUILD TANKARD most probably made by the widow of *Daniel Schleich of Eberswalde* (see Hintze, vol. 3, no. 390 & 391), the cylindrical drum engraved with members names and towns of origin dated 4th September 1723 and centred by the device of a carriage above an axe, the flat-topped cover with ball thumbpiece, 22.3cm. overall, circa 1723

(See Plate II)

49 Another German Tankard with plain cylindrical drum on ovolo-moulded foot, the stepped flat-topped cover engraved *ALP* 1789 and having ringed ball thumbpiece, traces of touchmark inside lid, 25cm., late 18th Century

PLATE I



27

45  
91

28

PLATE II



48		31		38
	144		145	
106		135		104

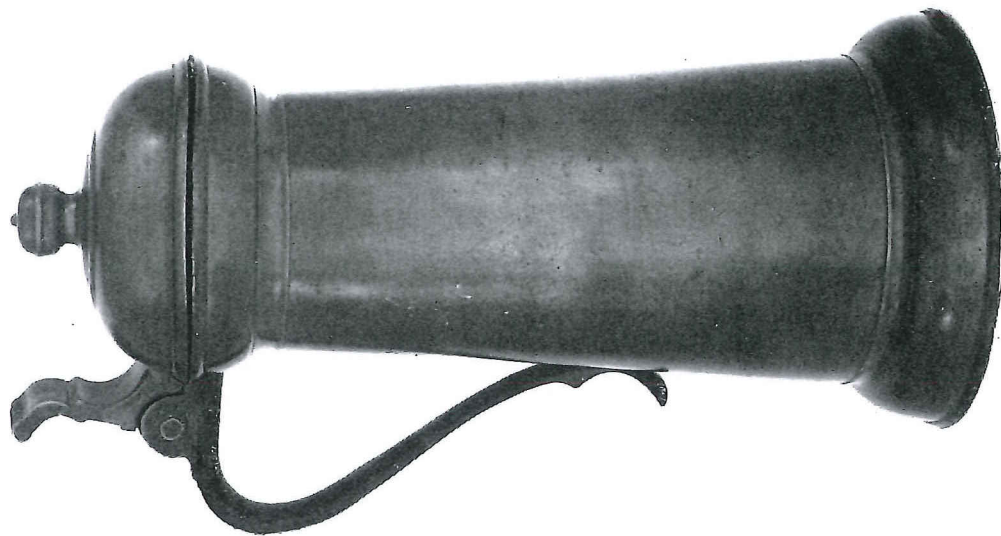




50



152



156



155

50  
by  
by 1  
cas  
Afr  
cas  
or  
dru  
the  
wo  
anc  
no.  
anc

\*  
E  
t  
r  
v

51  
rais  
pus  
Cer

52  
ster  
hig

53  
Dis

54  
rev  
Car  
squ  
6 $\frac{1}{4}$ in

55  
late  
mer

56  
6 $\frac{3}{4}$ in  
cap

50 A RELIEF-CAST ALLEGORICAL TANKARD made by *Jobst Sigmund of Nuremberg* after the model by the famous *Caspar Enderlein*, the tapering drum cast with three oval panels of the Continents: Africa, Europa and America, each panel being cast with the initials CE and depicting a seated or reclining female figure, the remainder of the drum cast with swags or fruit, masks and harpies, the domed lid with further masks and floral strap-work, the base engraved with owner's initials HIK and stamped with touchmark (Hintze vol. 2 mark no. 349), 18.3cm. overall, late 17th Century, (feet and thumbpiece wanting)

\*\* Only one other copy of this model by Enderlein is believed to exist. It was made by the 'Master with the Lily' and is now in the Kunstgewerbe Museum, Dresden. For reference see Hintze Nurnberger Zinngiesser vol. 2, no. 237a and 16lh

(See Plate III)

#### BRITISH PEWTER

51 A set of four baluster-stemmed Candlesticks raised on circular bases with moulded sockets and push-rod ejectors, 10 $\frac{1}{8}$ in. overall, 1st half 19th Century (4)

52 A pair of Candlesticks with tulip-knopped stems, roped borders and push-rod ejectors, 8 $\frac{3}{8}$ in. high, 1st half 19th Century (2)

53 An oval Britannia metal hot-water Meat Dish, 21in. long across handles, 19th Century

54 A plain-rimmed Dish with triad IHI on reverse, 14 $\frac{3}{4}$ in. diam., 2nd half 18th Century; a Candlestick with cylindrical column on stepped square base with London mark on underside, 6 $\frac{1}{2}$ in., circa 1800; and an Inkwell (3)

55 An early 19th Century quart Tavern Mug later amusingly engraved with animals to commemorate an 81st birthday, 6in. high

56 A concave-sided Victorian quart Tavern Mug, 6 $\frac{7}{8}$ in.; and another of similar size but reduced capacity, both 19th Century (2)

57 A George IV quart Tavern Mug of tapering form by *John Carruthers Crane of Bewdley*, 6 $\frac{3}{8}$ in.; a similar pint Mug by the same maker, 5in.; and another by *Yates & Birch*, 4 $\frac{1}{2}$ in., all 1st half 19th Century (3)

58 A VICTORIAN MEASURE of rare conical form and quart capacity, the narrow ovolo-moulded lip with verification stamp, 8in. high, 19th Century

59 An oval hot-water Meat Dish with plain rim by *Thomas Alderson*, the whole raised on capstan feet and having handles of baluster form, 21 $\frac{1}{8}$ in. long, circa 1790-1825

60 Another similar but smaller, 18 $\frac{1}{2}$ in. long; and another 14 $\frac{3}{4}$ in. long (one handle wanting), both by *Alderson*, circa 1790-1825 (2)

61 A plain rimmed Plate by *Nathaniel Barber*, initialled TB, 8 $\frac{3}{4}$ in. diam.; another of similar size by *R. Bush & Co.*, initialled DG; a hot-water Plate by *Jl of Bewdley*, 12 $\frac{1}{4}$ in. across handles, all circa 1775-1800; and a Britannia metal Teapot (4)

62 An unusual early oval Platter with gently sloping booge, the plain rim with engraved initials at top, LMS MHD, with a crowned rose stamp between and below stamped initials HSS MMD, the reverse with maker's touch of ?AR in a beaded circle, 18in. long, probably 17th or early 18th century

63 A circular Dish with single-reeded rim stamped at top with ownership triad TPH, the reverse with London mark, 16 $\frac{3}{8}$ in. diam., 1st half 18th Century

64 A pair of Plates with single-reeded rims by *John Langford Snr.*, each with stamped triad ICE ad verso, 8 $\frac{3}{8}$ in. diam.; and three other Plates of similar type, 9 $\frac{1}{4}$ in., all circa mid 18th Century (5)

65 A circular Dish with single-reeded rim, the underside with stamped initials MH, 16 $\frac{1}{2}$ in. diam., 18th Century

- 66 Two bulbous Trencher Salts,  $2\frac{1}{4}$ in. high, 19th Century (2)
- 67 A pair of Cup Salts in mid-Georgian style on concave stem and spreading moulded foot,  $3\frac{1}{4}$ in. high (2)
- 68 A deep Bowl with narrow single-reeded border made by Yates Birch & Spooner of Birmingham,  $12\frac{1}{2}$ in. diam., circa 1800
- 69 A bulbous Salt with everted lip and foot rim,  $2\frac{1}{4}$ in. high; and another with reeded lip and ovolo-moulded foot,  $2\frac{3}{8}$ in., 18th or early 19th Century (2)
- 70 A circular plain-rimmed Dish with various ownership or presentation initials on reverse,  $16\frac{1}{2}$ in. diam.; and another Dish, smaller,  $14\frac{3}{4}$ in.; both 18th Century (2)
- 71 A pair of plain-rimmed Irish Plates by Charles Clark(e) of Waterford, initialled ICB and verso,  $9\frac{3}{8}$ in.; and another by the same maker initialled IBM,  $9\frac{1}{4}$ in., all circa 1800
- 72 FLATWARE. A group of three plain-rimmed Dishes and three similar Plates all stamped with ownership triad ICM ad verso,  $16\frac{3}{8}$ in. diam., and  $9\frac{1}{4}$ in. diam., late 18th Century (6)
- 73 A Georgian Cup Salt on hollow base with stepped foot, 3in. high, circa 1750-80
- 74 A Dish with single-reeded rim by Samuel Duncombe,  $16\frac{1}{2}$ in. diam., mid 18th Century; and a Continental Whale Oil Lamp, 20.5cm., circa 1800 (the handle and wick holder wanting) (2)
- 75 A circular Bowl raised on slightly concave foot rim and having narrow rim stamped with owner's initials SC and 'hallmarks' of the maker, most probably Samuel Duncombe, 9in. diam., at top, probably late 18th Century
- 76 A group of twelve plain-rimmed Dinner Plates mostly by Samuel Duncombe including: a pair with stamped triad RVM on reverse: a set of six stamped MI on reverse: four others with various initials,  $8\frac{7}{8}$ in. to  $9\frac{1}{4}$ in. diam., mid 18th Century (faults) (12)
- 77 Two Dishes with single-reeded rims stamped HB at top, 15in. and  $16\frac{3}{8}$ in., mid 18th Century
- 78 Two further Dishes of similar type, the smaller with triad RSG on rim, the larger with MI on reverse,  $16\frac{1}{2}$ in. and  $18\frac{3}{8}$ in., mid 18th Century (2)
- 79 A plain-rimmed Deep Dish by John Duncombe, the reverse initialled EG,  $13\frac{3}{8}$ in., mid 18th Century
- 80 A pair of plain-rimmed Plates by Watts & Harton,  $9\frac{1}{2}$ in. diam., 19th Century; and a barrel-shaped Pitcher with shaped cover and open chair-back thumbpiece, the belly inscribed 'Henekeys Ltd. Established 1695',  $7\frac{1}{2}$ in. high, 19th Century (3)
- 81 Two baluster-shaped Pepper Casters with domed covers and acorn finials,  $5\frac{1}{4}$ in., 18th Century and two further Pepperettes,  $4\frac{1}{2}$ in., 19th Century (4)
- 82 A group of five bulbous lidless Victorian Tavern Measures from quart to half gill capacity; a similar quart Measure; and two gill Measures (one wanting handle),  $6\frac{1}{8}$ in. to  $2\frac{1}{4}$ in., 19th Century (8)
- 83† A George III West Country Measure of approx. quart capacity by Edgar, Curtis & Co. of Bristol, the body tapering in toward the neck and topped by a small everted lip, the tongued handle with ball terminal,  $6\frac{3}{4}$ in., circa 1800
- 84 A 'bud' baluster Measure of pint capacity (O.E.W.S.), the flat cover with stamped triad TWK and traces of maker's touch, the handle with splayed terminal,  $6\frac{1}{8}$ in., early 18th Century (repaired at handle joints)

85 A STUART DISH with plain broad rim bearing owner's initials MA together with 'hallmarks' of *John Cave of Bristol*, the reverse with an unrecorded touch of the three Leopards of England, 16 $\frac{3}{4}$ in. diam., 2nd half 17th Century

86 The African Jug. A late pear-shaped Jug with domed lid and shell scroll thumbpiece, probably made by *Gaskell & Chambers Ltd.*, 11 $\frac{1}{4}$ in.

87 A pair of uncommon narrow-rimmed Stuart Plates by *Roger Perkins of Bristol* (MPM 3621 or 3622), each stamped with ownership triad MWE and makers 'hallmarks' on face, touch on reverse, 8 $\frac{1}{2}$ in. diam., late 17th Century (2)

88 A MARRIAGE PLATE by *James Hitchman* (O.P. no. 2340), the well engraved in 'wriggled-work' with a peacock on a floral bough, the single-reeded rim with a border of wriggled lunettes, 8 $\frac{1}{2}$ in. diam., circa 1720; and a Plate by *J. & T. Cotton*, 9 $\frac{1}{4}$ in., circa 1750 (both heavily scaled) (2)

89 A large circular Dish with single-reeded rim stamped SR at top, traces of touchmark on reverse, 19 $\frac{1}{4}$ in.; and a plain rimmed dish with ownership triad WKM on reverse, 18 $\frac{3}{8}$ in., both 18th Century (2)

90 An oval Hot Water Meat Dish by *Jl of Birmingham*, the plain rim fitted with upcurving baluster handles, the whole raised on pad feet, 18in. long, circa 1775-1800

91 A SMALL GARNISH OF PEWTER SADWARE made by *Jl of Birmingham* and stamped with the Duncombe crest touchmark, each piece of plain rimmed type and stamped with ownership triad TFE on reverse, 2nd half 18th Century, comprising: A set of twelve Plates, 9 $\frac{1}{4}$ in. diam. A pair of Dishes, 12in. diam. A larger pair of Dishes, 14 $\frac{7}{8}$ in. diam. A larger pair of Dishes, 16 $\frac{1}{2}$ in. diam. A larger Dish, 18 $\frac{1}{4}$ in. diam. (19)

(See Plate I)

92 A SET OF SIX PLATES, also of plain-rimmed type by *John Duncombe of Birmingham*, each stamped with ownership initials IR on reverse, 9 $\frac{1}{4}$ in. diam., 18th Century (6)

93 An attractive barrel-shaped Spice Pot having domed slip-on cover with acorn finial, 4 $\frac{5}{8}$ in. high; and a Plate by *John Duncombe*, 9 $\frac{1}{4}$ in. diam., (damage to rim), both 18th Century (3)

94 A 'Welsh Hat' Commode Pot of slightly tapering form having everted single-reeded rim stamped with the 'hallmarks' of *Christopher Bancks of Bewdley*, 7 $\frac{3}{8}$ in. high, late 18th Century

95 A circular Dish by *Thomas Grame*, the multiple reeded rim stamped with triad IMM, 18 $\frac{1}{4}$ in. diam., early 18th Century

96 A Dish with single-reeded rim, maker's marks on reverse, 16 $\frac{1}{2}$ in. diam., 18th Century

97 A SET OF SIX PLATES with single-reeded rims stamped at top with owner's initials SF and on reverse with indistinct touch of a fir tree, 9 $\frac{1}{2}$ in. diam., 18th Century (6)

98 A pair of plain-rimmed Plates by *Samuel Duncombe* stamped with triad IRE at top, 9in. diam.; another with Duncombe crest, touch mark and triad EPM, 2 $\frac{1}{8}$ in. diam.; and another by *John Lawrence* with triad DBE, 2 $\frac{3}{8}$ in. diam., all 18th Century (4)

99 A Scottish pear-shaped pint Measure, the single domed cover with crowned verification medallion dated 1826 and shell thumbpiece, 6 $\frac{1}{4}$ in. high, 2nd quarter 19th Century

100 A Charles II Plate most probably by *Robert Banck(es)* of ? Galway, the semi-broad rim with triple-reeded border and stamped with 'hallmarks', touch *ad verso*, 2 $\frac{3}{8}$ in. diam., circa 1675

101 A Queen Anne Tankard, the straight sided drum with single fillet encircling lower waist and ovolo moulded foot, the handle with cut-card decoration at top and 'ram's horn' thumbpiece, 7in. overall, circa 1700-10, (the cover a later replacement)

102 A GOOD LARGE CHARGER, the plain rim engraved with owner's initials W.J., 21 $\frac{3}{4}$ in. diam., London touchmarks on reverse, circa 1800

103 AN ALE OR CIDER PITCHER of quart capacity and bulbous outline having spout with perforated grille at front, the domed lid with palmette thumbpiece, the handle of 'overlapped' type, 7 $\frac{1}{2}$ in. overall, 1st half 19th Century

104 A SCOTTISH CRESTED TAPPIT-HEN of typical form and Scots pint capacity (three pints Imperial), the collar engraved with owners initials IB over MW, 12in. overall, circa 1800

(See Plate II)

105 A Scots pear-shaped pint Measure with domed lid and spade thumbpiece, most probably by Robert Galbraith of Glasgow, whose initials are cast in relief on top of the handle, 6 $\frac{1}{8}$ in.; and a similar  $\frac{1}{2}$ -pint Measure with shell thumbpiece probably by the same maker, 5in. (hinge pin wanting), both circa 1840 (2)

106 A SCOTTISH TAPPIT-HEN of typical form, the plain domed cover inscribed with owners initials H\*G over I\*A, 11in. overall, circa 1800

(See Plate II)

107 A Georgian two-handled Loving Cup, the V-shaped bowl with thin band of incised reeding and trumpet-mouth foot, 6 $\frac{1}{8}$ in., 18th Century

\*\* Formerly the property of the late A. H. Isher of Cheltenham

108 A GEORGIAN TANKARD, the double-domed cover with solid chairback thumbpiece, the drum with single filet encircling lower waist, the handle with ball terminal, 6 $\frac{1}{8}$ in., first half 18th Century

109 A LATE STUART FLAGON of plain slightly tapering form with spout at front and narrow foot rim, the flat-topped cover with twin-cusped thumbpiece, the drum engraved at front: Walt Smith & James Tweddale Church Wardens, traces of indistinct touchmark inside base, 10 $\frac{1}{4}$ in. high, end 17th or early 18th Century

110 A Stuart broad-rimmed Charger having incised reeded border stamped with owners initials MT together with the 'hallmarks' of the maker AB, the whole of the well later embossed and chased with pseudo-armorials below a helm within foliate mantling, touchmark of a crown dated 16..? on reverse, 20 $\frac{1}{2}$ in. diam., circa 1670-80

111 A Slip-Top Pewter Spoon with owner's initials I.S. and maker's touch of WL all stamped in the fig-shaped bowl, 6 $\frac{1}{2}$ in., 16th/17th Century

112 Another, the distal end stamped with the initial L, the ovoid bowl with touch of EH with crossed spoons, 7 $\frac{1}{8}$ in., 17th Century

113 A Puritan Spoon with rounded bowl stamped with touch of HS, 6 $\frac{1}{2}$ in., 17th Century

114 A 'Pied-de-Biche' Spoon, the round bowl with dated touch, 7 $\frac{1}{2}$ in., continental, circa 1680

115 A Continental Trifid Spoon with stamped initial K on terminal, the oval bowl with touch on reverse, 7in., circa 1680

116 Another, initialled MW, with cast feather motif on reverse of bowl, 7 $\frac{1}{2}$ in.; and a 'Dog-nose' Spoon, 7 $\frac{3}{8}$ in., late 17th/early 18th Century (2)

117 A latten Seal-top Spoon with simple ball under the seal and fig-shaped bowl stamped with fleur-de-lis maker's mark, 6in., 16th Century

118 Another, similar, with maker's touch of RB stamped in the bowl, 6 $\frac{1}{4}$ in. long, 17th Century

111  
161  
  
120  
kn  
lor  
  
121  
cir  
  
122  
bo  
Ce  
  
123  
bo  
161  
  
124  
shc  
anc  
chr  
4 $\frac{3}{4}$ i  
  
125  
lat  
  
126  
mc  
7 $\frac{3}{8}$ i  
  
127  
HK  
8 $\frac{3}{8}$ i  
  
128  
pla  
wit  
File

119 Another similar, with indistinct touch, 6in., 16th Century

120 Another, with foliate baluster and gadrooned knob beneath the seal, rose touch in bowl, 7in. long, late 16th/early 17th Century

121 An uncommon latten 'Trifid' Spoon, 6½in., circa 1680

122 A latten 'Strawberry-knop' Spoon, the oval bowl with triple spoon touchmark, 6½in., 17th Century

123 A latten 'Apostle' Spoon with deep rounded bowl, the terminal depicting St. Andrew, 5in., 16th/17th Century

124 AN ALE JUG of rare small size, the shouldered bulbous body with cylindrical collar and spout at front, the domed cover with open chairback thumbpiece and 'overlapped' handle, 4½in., circa 1790

125 ANOTHER, larger, of similar type, 6in. high, late 18th/early 19th Century

126 ANOTHER, larger, the front engraved with monogram GJR, made by Gerardin & Watson, 7½in. high, early 19th Century

127 ANOTHER, larger, the front with monogram HK, the base with traces of ownership inscription, 8½in. overall, late 18th/early 19th Century

128 A pair of rare late 17th Century plates of plain-rimmed type, engraved at top with armorials within Stuart mantling and made by Richard Fletcher of London, 9½in. diam., 1690/1700 (2)

129 A BROAD-RIMMED DISH with slight boss in centre of the well, the rim with traces of 'hall-marks', 16¾in. diam., the rim 3in. wide, circa 1660-70

130 A pair of plain-rimmed Plates by Samuel Duncombe with ownership initials S\*P on reverse, 8¾in. diam.; and another pair of similar Plates by the same maker, 8½in. diam., second half 18th Century (4)

131 A set of four plain-rimmed Plates with owner's initials C\*J engraved on rim, probably by Harton & Sons, 9¾in. diam., circa 1860

132 A pair of Plates by John Wynn of London, each stamped with owner's initials H on reverse, 9¾in. diam., circa 1750-60; another pair of Plates with engraved triad WMM on reverse, 9½in. diam.; a Plate by Richard Going, 8½in. diam.; and a Plate by John Duncombe, 8¾in. diam., all 18th Century

133 A circular Deep Dish with single-reeded rim made by Leonard Terry of York, 13¼in. diam., first half 18th Century

134 A JERSEY FLAGON of pot capacity and typical baluster form made by John de St. Croix, the heart-shaped cover with twin-acorn thumbpiece and touchmark on underside, 27cm. overall, circa 1750 (handle joints repaired)

135 A GOOD GUERNSEY POT FLAGON of typical lidded form by Joseph Wingod, the collar stamped with rose and fleur-de-lis verification marks, the cover with twin-acorn thumbpiece, 29cm., mid-18th Century

\*\* An inexplicable feature is appearance of the IDx mark on the hinge pin. See Woolmer's 'Pewter of the Channel Islands', p. 36 & 37 (mark no. 1)

(See Plate II)

136 Two small Jersey Measures of typical baluster form, both  $4\frac{3}{4}$ in., late 18th Century (both wanting lids) (2)

137 A PAIR OF BULBOUS LIDLESS MEASURES probably made by Gaskell for Channel Island use being of less than  $\frac{1}{2}$ -gallon capacity (approx. 1950cc.), marked inside base with open hand touch alongside a crowned x, the handles with extended 'tail' and ball terminal,  $7\frac{3}{4}$ in., 19th Century (2)

138 A set of five bulbous lidless Tavern Measures from quart to  $\frac{1}{2}$ -gill capacities, 6in. to  $2\frac{1}{4}$ in., 19th Century (5)

139 A WIV pint Tavern Mug inscribed BH,  $4\frac{1}{2}$ in.; a similar quart Mug inscribed HJ, 6in.; a Scots copper Thistle Measure of pint size, 6in., circa 1860; and two pewter Inkwells (5)

140 A circular Dish with single-reeded rim by William de Jersey of London (O.P. 1349), the reverse stamped with 'hallmarks', touch and crowned owner's initials EBD,  $16\frac{3}{4}$ in. diam., circa 1755-1770

\*\* This dish is illustrated on the dust jacket of Pewter of the Channel Islands by Woolmer & Arkwright and the marks are illustrated on p. 123, Pl. LIX of this work where the nature of W. de Jersey's connections with Channel Islands is discussed

141 Another Dish of similar type by Thomas? Ingles (O.P. no. 2527), the rim engraved with initials EBN,  $16\frac{5}{8}$ in. diam., early 18th Century

\*\* This maker is discussed by Woolmer on p. 117 op. cit.

142 Another also of similar type by Hellier Perchard (O.P. no. 3611),  $16\frac{3}{4}$ in. diam., early 18th Century

\*\* This maker is also discussed p. 125, op. cit.

143 A plain-rimmed Dish by Robert Baldwin of Wigan,  $15\frac{3}{4}$ in. diam., 1st half 18th Century

144 A STUART DISH by G. Smith of London, the broad rim with reeded border stamped with maker's 'hallmarks' and ownership triad IHH, touch ad verso, 18in. diam., circa 1680

(See Plate II)

145 ANOTHER STUART DISH with plain broad rim by Thomas Barford (O.P. & MPM nos. 5473), ownership triad TBH and 'hallmarks' on rim, touch ad verso,  $16\frac{5}{8}$ in. diam., circa 1670-80

(See Plate II)

146 A GALLON BALUSTER MEASURE by John Fasson, the handle with shield terminal, maker's touch on lip,  $11\frac{3}{4}$ in., 1st half 18th Century (the cover and thumbpiece wanting)

147 A GEORGE III LIDLESS ALE FLAGON of gallon capacity with spout at front by Henry & Richard Joseph of London, the cylindrical drum raised on ovolo-moulded foot and inscribed above a band of reeding at waist: T Blackwell, George, Beckenham, Kent, the lip with WR verification stamp, the handle with engraved triad TBM at top,  $11\frac{3}{8}$ in. overall, last quarter 18th Century

148 A CROMWELLIAN OR CHARLES II FLAGON of typical cylindrical form raised on ovolo-moulded foot and having cover of 'Beefeater's hat' type with twin-cusped thumbpiece, the handleback initialled S over PETB, indistinct maker's touch . . . I . . . in beaded circle inside base,  $9\frac{1}{2}$ in., 2nd half 17th Century

149 A 'BUD' BALUSTER MEASURE of gill capacity with flat circular lid, 4in., 18th Century

150 A PINT BALUSTER MEASURE by John Fasson (O.P. no. 1635), with double-volute thumbpiece and ball handle terminal, 6in., circa 1730-60



151 A QUART BALUSTER MEASURE of similar type to the above, unmarked, 8in., circa mid-18th Century

152 A RARE GADROONED DOUBLE-HANDLED LOVING CUP AND COVER of William III or Queen Anne period, the lower half of the bowl encircled by a band of diagonal gadroons below a narrow roped fillet, the handles with 'cut-card' ornament at top, the separate domed lid with two bands of vertical gadroons centred by a finial springing from a relief-cast rosette, no marks, 5¼in. to lip, 7½in. overall, circa 1695-1705

(See Plate III)

153 A SMALL STUART DISH with 'wriggled-work' decoration, the well engraved with a pot of flowers and the rim with a continuous band of tulip heads within raised multiple-reeded border, owner's initials CC on reverse and GB on rim together with 'hallmark' of IS, 12⅞in. diam., circa 1680

\*\* Ex collection of the late A. T. Isher

154 A SMALL GARNISH OF FLATWARE made by Samuel Cox of London, each piece of plain-rimmed type and engraved at top RR, comprising: A set of seven circular Plates, 9¼in. diam.; A rectangular Meat Dish, 17¼in. long; Three larger Dishes of similar type, 21in. long; Another larger 22¼in. long

\*\* The owner's initials RR are believed to be those of Redmond of Rufford Abbey, Yorks

155 A RARE CHARLES II 'WRIGGLE-WORK' DISH engraved all over the well with the crest, arms and supporters of the Butchers Company of London and Exeter together with the name Sarah Cox, the broad rim decorated with lunettes through which runs a band of inscription: 'Preserve the Truth, Falshood defie, with Honnestie still live and die', dated 'Anno Domini 1664' and stamped with 'hallmarks' of the pewterer SB, 18⅜in. diam., the rim 3⅜in. wide, circa 1664

(See Plate IV)

156 A FINE JAMES I FLAGON of typical form by the makers EG and RA (clasped hands touch-mark, O.P. no. 5390), the body with slight entasis having ovolo-moulded lip and foot, the knopped bun cover with ridged erect thumbpiece, touch on handleback, 15in., circa 1610-20

(See Plate IV)

END OF SALE