

GDW

BRITISH AND EUROPEAN PEWTER

including

A very rare pair of Queen Anne relief-cast Porringers, *by John Quick, circa 1710-15*

Two plates and a Dish, decorated in "wiggled" work, *circa 1715-20*

A dome-lidded Tankard, *by Pitt & Dadley, circa 1780-1810*

A crested "Tappit-hen", *18th century*

A rare Saxon Tankard, *probably by Hans Wildt the younger of Joachimstal, circa 1590-1600*

which will be sold by auction

by

SOTHEBY PARKE BERNET & CO.

Auctioneers of Literary Property and Works Illustrative
of the Fine Arts

At their large galleries,
34 & 35 New Bond Street, London W1A 2AA
Telephone: 01-493 8080 Telex: 24454 SPBLON G

Day of Sale

Wednesday, 16th March, 1977, at 11 am precisely

In sending Commissions this Catalogue may be referred to as "QUICK"

On view at least two days previously (not Saturdays)

Illustrated Catalogue Price 30p

y
L
r
e
f
e
e
k
e
s
e
r
e
s
L
e
r
r
n
r
e
s
s
e
n
e
e
s
s
e
h
n
n
x
e
le
h
n
e
d
e
n
n
f
n
d
a
e
s
r

CATALOGUE OF
BRITISH AND EUROPEAN PEWTER

Day of Sale

Wednesday, 16th March, 1977, at 11 am precisely

ALL SALES SUBJECT TO THE CONDITIONS PRINTED
IN THIS CATALOGUE

Various Properties

BRITISH PEWTER

- 1 A rectangular hot-water Meat Dish with plain rim and fixed baluster handles *made by Samuel Cocks*, the well with shaped gravy depression and gallery, 21½in. long overall, circa 1820-40
- 2 A plain-rimmed Dish stamped with initials ^{ER}_{AS} and dated 1775, 16½in. diam., and another of similar size with single rim stamped ^{RB}_{AG} and dated 1777, both 18th Century
- 3 A Stuart Dish with multiple-reeded border to the rim and stamped with 'hallmarks', 15in. diam., circa 1690-1700
- 4 Two Dishes with single-reeded rims, unmarked, 15in. diam., 18th Century (2)
- 5 A similar but larger Dish, 16½in. diam., 18th Century
- 6 An oval Meat Platter by *John Hodges & Sons of Dublin*, the plain rim with a crowned mono-gram, 18¾in. long; a Salt with roped lip; a baluster-shaped Pepperette; and an urn-shaped continental Mustard Pot with high domed lid, 5½in., all early 19th Century (4)
- 7 A plain-rimmed Plate by *Benjamin Withers*, 9¾in. diam., circa 1740; two Plates of similar type; a Dish with Duncombe crest touch and initials AD on reverse, 12in. diam.; and a Flemish Plate, 8¾in., all 18th Century (5)
- 8 A Stuart Dish, with multiple-reeded border to the rim and stamped owner's initials KN, no maker's mark, 18¾in. diam., circa 1680-1700
- 9 A Victorian pint Measure with thickened lip rim and inscription at front, 4¾in.; a late Victorian pint Mug, a bulbous lidless GIV ½-pint Measure, 3¾in.; a similar Victorian gill Measure; all 19th Century; and the top of a hot-water Plate, circa 1800 (5)
- 10 An interesting Oil Lamp formed from an 18th Century Cup Salt with later added wick holder and strap handle with ball thumbgrip, the body engraved AJP 1854 and enriched with wriggled work, 2¾in., 18th/19th Century
- 11 An Oil Lamp of typical form with columnar stem on broad domed base and having mid-stem drip-catch joined to the oil bowl at top by a strap handle with ball thumbgrip, 8in., early 19th Century
- 12 Another Oil Lamp of similar type to the above but with dished base engraved underneath WH 1861, 10½in., 19th Century
- 13 A pear-shaped Water Carafe with everted lip *made by Thomas Compton* (Cott. no. 1063), 9½in. high, early 19th Century

14 An interesting large spun pewter Font Bowl inscribed around the rim: Presented to the Hooks Mills Orphanage Chapel by the Trustees of the Kingston Religious Trust. 5, Petty Cury, Cambridge. Nov. 1913, 19in. diam. at top, mounted in an iron stand (2)

15 A Shaving Mug with lidded spout, side handle and separate domed cover, 5½in. high, 19th Century

16 A Scottish thistle-shaped Mug with spout at front and scroll handle, 7in., circa 1840 (cracked at belly seam); and a Footed Cup with handle by Yates, Birch & Spooner, 5½in., early 19th Century (2)

17 A PEAR-SHAPED TANKARD with single file around waist and double-domed cover with heart-pierced chairback thumbpiece made by Allen Bright of Bristol, 7½in. overall, circa 1750

18 A round-end Spoon with oval bowl, the top of the stem cast with a rose-head and TP ad verso, 7½in., a Punch Ladle with 'hallmarks' in bowl and turned wood handle, 10¼in.; a Dutch round-bowl Spoon by H.L., 6⅝in., all 18th Century; and a tinned copper double-ended Spoon, 11in. (4)

19 A set of five late Victorian Tavern Mugs inscribed G. Cockerill, White Lion, Waddesdon, 4¾in. high (5)

20 A group of five bulbous lidless Tavern Measures from pint to approx. ¼ gill, 4¼in. to 1¾in.; 19th Century (5)

21 A handle-less pint Measure by Loftus, 4¾in., a quart Tavern Mug with monogram ECE at front, 6½in.; a ½-pint Mug, 3½in.; a Ladle by John Yates, 12in.; a baluster-shaped Pepperette, 4¼in.; and a German ¼-litre cylindrical Measure, 4½in., all 19th Century (6)

22 A pair of Plates by Edmund Harvey initialled IH and MH respectively, both later initialled WM, 8¾in.; and another, probably by the same maker, initialled EW, 8⅞in.; all 1st half 18th Century (3)

23 A small deep Dish with plain narrow rim, initials TP on reverse, 10½in.; a deep Plate by John Home, 9½in. diam.; and a pair of Plates with single-reeded rims, 7¾in. diam., all 18th Century (4)

24 A plain-rimmed Plate by John Home, the well engraved with a coat-of-arms, the rim with scrolling foliate band, 9¼in. diam., 2nd half 18th Century

** The arms are those of Mansel, Bt.

25 A circular Stuart Dish, the rim decorated with contemporary bands of punched rosettes and oak-leaf-with-acorn motifs together with the date 1672, owner's initials and 'hallmarks' of the maker, but later engraved with swags and ribbon ties and an inner border of crosses, the well also with later decoration of a dolphin embossed against a sunburst, 18½in., 17th Century, with later decoration

26 A pair of plain-rimmed Plates by Russell & Laugher of London, 9⅝in. diam., 2nd half 18th Century (2)

27 A set of three Plates by SH (as Cott. no. 5681), 9¾in. diam., 2nd half 18th Century (3)

28 A wavy-edged deep Plate, 9¼in. (faults); and a crested hot-water Plate by Jonas Durrand, 9in. diam., both 18th Century (2)

29 A group of three Dishes of graduated sizes made by John Duncombe, all with single-reeded rims and owner's initials AD engraved on reverse, 18½in., 15in. and 12½in., 1st half 18th Century (3)

30
pu
sir
Ce

31
an
in
Ce

32
Sc
M
pi
lid
Sa

33
di
18

34
di

35
Di
18:

36
no
on
file
wit
ber
(14

1
1

37
Co
cas
dia
by

s
1

30 A pair of baluster-stemmed Candlesticks with push-rod ejectors and loaded bases, $9\frac{1}{2}$ in.; and a single Candlestick of similar outline, $7\frac{1}{2}$ in., 19th Century (3)

31 A cylindrical Tobacco Jar with domed cover and lead presser, 6in., circa 1800-1820; and an interesting tulip-shaped Cuspidor, $4\frac{3}{4}$ in. high, 19th Century (2)

32 A concave-sided quart Mug, by T. & J. Birch, Scots verification on lip, $6\frac{1}{4}$ in.; a Victorian pint Mug, scroll handle, $4\frac{3}{4}$ in.; two straight-sided half-pint Mugs, by Compton, $3\frac{3}{8}$ in.; two bulbous lidless gill Measures, 3in.; and two footed Salts, 3in. diam., all 19th Century (8)

33 A plain-rimmed Dish, initialled AN, $16\frac{1}{2}$ in. diam.; and three Plates, $9\frac{1}{2}$ in. to $8\frac{3}{4}$ in. diam., all 18th Century (4)

34 A Deep Dish, with single-reeded rim, $14\frac{1}{2}$ in. diam., 18th Century

35 A Dish with single-reeded rim, by Samuel Duncombe, the reverse with crowned initials WS, 18in. diam., mid-18th Century

36 A double-handled Cup made by B & W (Cott. no. 740B), the body of inverted bell-shape raised on hollow domed foot and having single narrow flut around lower waist, the fluted strap handles with pointed terminals, 'Imperial' verification stamp beneath one handle and 'hallmarks' on lip, $5\frac{1}{2}$ in. (14cm.), circa 1830

** Illustrated by R. F. Michaelis in 'Antique Pewter of the British Isles', pl. XXII, fig. 59 and previously sold in these rooms 12th November 1973, lot 59

37 A 'wavy-edged' five-lobed Plate by Thomas Compton (Cott. no. 1063), the border of the rim cast with shells and foliate motifs, $9\frac{1}{2}$ in. (24.2cm.) diam.; and a deep Plate of similar size and type by the same maker, both early 19th Century (2)

** Also ex. collection of the late R. F. Michaelis sold in these rooms 12th November 1973 as lot 41

38 A pair of Serving Spoons by John Yates (Cott. no. 534A), 12in (30.5cm.), circa 1830; a baluster-shaped Pepper Caster, $5\frac{1}{2}$ in., circa 1800; and a pair of Britannia Metal Salts with beaded rims, 3in. diam., 19th Century (5)

39 A set of three $\frac{1}{2}$ -pint Tavern Mugs by Morgan & Gaskell, $3\frac{7}{8}$ in., circa 1840; and two further Mugs of similar size and type, 19th Century (5)

40 A pair of oval Meat Platters probably by Watts & Harton, the plain rims with thick filet on underside perhaps for locating in hot-water dishes, 16in. long, 19th Century (2)

41 A bulbous lidless quart Measure by James Yates, $6\frac{1}{4}$ in., circa 1830; the body only of a small baluster Measure of 'double-volute' type, $2\frac{1}{2}$ in., 18th Century; and a Victorian pint Mug with later inscription, $4\frac{3}{4}$ in. (3)

42 A group of seven bulbous lidless Measures from $\frac{1}{2}$ -pint downwards, $3\frac{3}{4}$ in. to 2in., mostly Victorian (7)

43 A plain-rimmed Dish with stamped triad W^FA at top, made by WT (Cott. no. 5988), $16\frac{1}{2}$ in. diam., circa 1750

44 A similar Dish by Samuel Ellis with triad W^BE on rim, $16\frac{1}{2}$ in. diam., circa 1750

45 Another, larger, with indistinct maker's mark *Orel* . . . on reverse, 18in. diam., 1st half 18th Century

46 A Dish with single-reeded rim by William Cooke, $18\frac{1}{4}$ in. diam., 18th Century

47 AN IRISH FLAGON with cylindrical body on spreading ovolo-moulded foot, having spout at front with boldly curved handle with swan's-neck upper attachment, the double-domed cover with scroll-topped purchase, the letter B stamped inside base, $11\frac{1}{2}$ in. overall, circa mid-18th Century

- 48 A RARE IRISH FLAGON, of slim befeater outline, with boldly curving handle, slightly domed top to the cover with central knob and tall twin-cusped thumbpiece, 12½in. high, maker's mark on handleback, circa 1700-1730
- 49 A Stuart Plate with triple-reeded border to the rim, indistinct touch and triad R^KS on reverse, 9½in. diam., circa 1690-1700
- 50 Two Dishes with single-reeded rims by Samuel Ellis, both stamped with crowned triad W^MW at top, 15in. and 16½in. diam., circa 1750 (2)
- 51 A Dish of similar type with triad A^TT at top and indistinct touch on reverse,, 16¾in. diam.; and another of similar size initialled SS at top, both 18th Century (2)
- 52 A similar Dish, unmarked, 16½in. diam., 18th Century
- 53 Another, with indistinct touch on reverse, 18¼in.; and another smaller initialled B^PE, 15in., both 18th Century (2)
- 54 A plain-rimmed Dish by Robert Bush, 15in. diam.; and a similar but smaller Dish by Samuel Duncombe, 12in. diam., both 18th Century (2)
- 55 Two plain-rimmed Plates with Duncombe crest touchmarks, 9¼in. diam.; and another with single-reeded rim by Henry Sewdley, 9¾in., all 18th Century (3)
- 55A A pair of Victorian straight-sided pint Mugs, by James Yates, 4½in. high, mid-19th Century (2)
- 55B A pair of Victorian half-pint straight-sided Mugs, by E. Cowles, inscribed: S. Pipkin, Foresters Arms, Hillingdon, 3½in. high, circa 1850 (2)
- 55C A Scottish waisted pint Mug, by Anderson Bros., Glasgow, 5in. high; and a similar half-pint Mug, 4in., mid-19th Century (2)
- 55D Three small Plates, with single-reeded rims, by William de Jersey, 7¾in. diam., circa 1760 (3)
- 55E A group of four bulbous lidless Tavern Measures, from half-pint to ¼-gill, 3½in. to 2in. high, 19th Century (4)
- 56 A plain rimmed Charger by John Alderson of Carnaby Street, 20¾in. diam., 2nd half 18th Century
- 57 A CHARGER with single-reeded rim having stamped triad R^PA at top, indistinct touch on reverse, 20¼in. diam., 1st half 18th Century
- 58 A STUART CHARGER with multiple-reeded border to the rim made by WR, the reverse with stamped triad E^WA and touchmark, 22in. diam., circa 1680-1710
- 59 A SET OF EIGHT PLATES of plain-rimmed type made by John Duncombe of Birmingham, all engraved at top with a crest, 24.4cm. diam., 18th Century (8)
- 60 A pair of deep Plates also by John Duncombe and engraved with a similar crest to the above, 24.1cm. diam., 18th Century (2)
- 61 A Stuart Plate with multiple-reeded border to the rim by WB (Cott. no. 5484), the rim stamped with 'hallmarks' and owner's initials AC, 23.5cm. diam., circa 1690
- 62 A Queen Anne or George I Dish by Edward Leapidge, Snr. (Cott. no. 2552), the multiple-reeded rim stamped with 'hallmarks', touch on reverse, 46.1cm., 1st quarter 18th Century

63
Bl

64
wi
16!

65
by
siz
dia

66
1st

67
ma
wit
rec
top

68
Na
well
MV
line

69
Lea
mul
the
heac
and

70
CAST
(Cot
ated
gutt
shap
initia
side,
:
Vi

63 A Dish of similar type and size by Benjamin Blackwell, 46cm. diam., circa 1690-1700

64 A smaller Dish also of similar type, the rim with 'hallmarks' of SS, 42.3cm. diam., circa 1690-1700

65 A Dish with single-reeded rim initialled $\kappa^S W$, by John Duncombe; and another Dish of similar size and type initialled $\tau^C S$ on reverse, both 34cm. diam., 1st half 18th Century (2)

66 A larger Dish of similar type, 46.4cm. diam., 1st half 18th Century

The Property of a Gentleman

67 A 'WRIGGLED-WORK' PLATE by Nicholas Jackman of London (Cott. no. 2552), the well engraved with a crown over a rose and thistle, the single-reeded rim stamped with owner's initials AG at top and MG at bottom, 23.8cm. diam., circa 1720

68 ANOTHER 'WRIGGLED-WORK' PLATE by ? Nathaniel Bartlett (indistinct touch on reverse), the well engraved with a thistle and owner's initials MW, the single-reeded rim with further 'wriggled' lines, 22.8cm. diam., circa 1715

69 A 'WRIGGLED-WORK' DISH by Edward Leapidge, Snr. of London (Cott. no. 2893), the multiple-reeded rim with a band of tulip motif, the well centred by a stylised plant bearing rose-heads, thistles and a tulip above the date 1715 and owner's initials MW, 38.2cm. diam., circa 1715

70 A VERY RARE PAIR OF QUEEN ANNE RELIEF-CAST PORRINGERS made by John Quick of London (Cott. no. 3807), the 'booged' bowl of each decorated with diagonal flutes or gadroons and having gutter and boss in the well, each having single shaped and fretted ear stamped with owner's initials MW and bearing maker's touch on underside, 18.4cm. across ear, circa 1710-15 (2)

** An identical Porringer by John Quick in the Victoria and Albert Museum is illustrated by

R. F. Michaelis in 'British Pewter', p. 54, where he records: 'No other similarly decorated porringer is known.'

See also 'English Pewter Porringers'—part IV (Apollo, 1949) by Michaelis, p. 100, fig. XIX, and the Catalogue of the Reading Exhibition of Pewter 1969, no. 149, for further illustrations and descriptions of the same porringer

(See Frontispiece)

*The Property of The Trustees of
Dr. L. M. Arnold of "Durlock"*

71 A bulbous $\frac{1}{2}$ -pint Measure with domed cover and palmette thumbpiece, 11.7cm., circa 1830-50; and a plain U-shaped Beaker, 10cm., early 19th Century (2)

72 A BALUSTER MEASURE of pint capacity with flat circular cover and bud thumbpiece, 16.3cm., 1st half 18th Century

73 A group of four Irish Baluster Measures from $\frac{1}{2}$ -pint to $\frac{1}{4}$ -gill sizes, including two gill specimens, 12.2cm. to 5cm., 1st half 19th Century (4)

74 A rectangular or 'Treasury' Inkstand with double-flapped cover and raised on paw feet, made by Richard Yates of London, 17.6cm. long, circa 1800

75 A pair of Candlesticks with knopped conical stems, waisted sockets and roped borders, 22cm., circa 1800 (2)

76 A Irish pint 'Haystack' Measure by Austen or the Munster Iron Co., with unusual GR and crown verification stamp near lip, 14.5cm.

77 A plain-rimmed Dish by Samuel Smith (Cott. no 4379), the reverse with stamped triad IRM, 16 $\frac{7}{8}$ in. (42.7cm.) diam., circa mid 18th Century

78 A similar Dish by *Samuel Duncombe* with stamped triad T^{LA} on reverse, 15in. (38cm.) diam., circa 1750

79 A similar Dish by *Samuel Taylor* (Cott. no. 4672), 16 $\frac{3}{8}$ in. (41.7cm.) diam., circa 1750; and a Dish with gently curving booge, touch on reverse (as Cott. no. 6040), 14 $\frac{3}{4}$ in. (37.5cm.) diam., 18th Century (2)

80 A Dish with single-reeded rim, 16 $\frac{5}{8}$ in. (42.3cm.) diam., circa 1730-50; a plain-rimmed Plate by *John Langford*, 9 $\frac{1}{4}$ in. (23.5cm.) diam., circa 1760; and another by *S. Cocks*, 9 $\frac{1}{2}$ in. diam., circa 1820 (3)

81 A pair of plain-rimmed Scottish Dishes by *Robert Whyte of Edinburgh*, 10 $\frac{3}{4}$ in. (27.3cm.) diam., early 19th Century (2)

82 A pair of Dishes with single-reeded rims by *Samuel Duncombe*, the reverse stamped with initials ET, 12 $\frac{3}{8}$ in. (30.9cm.) diam., circa 1750 (2)

83 A deep Dish with single-reeded rim by *John Jones of London* (Cott no. 2663), 13in. (33.1cm.) diam., circa 1750

84 A larger deep Dish of similar type to the above by *Samuel Ellis*, the rim initialled MS, 16 $\frac{1}{2}$ in. (41.7cm.) diam., circa 1750

85 A STUART CHARGER with multiple-reeded border to the rim by *Joseph King* (Cott. no 2746), the rim with 'hallmarks' and owner's initials EF, 22 $\frac{1}{4}$ in. (56.5cm.), circa 1680-1700

86 AN UNUSUAL FLAGON with plain tapering drum and spout at front raised on reeded flared foot, the cover of double-domed type with fluted thumbpiece and the handle with ball terminal, unmarked, 29.5cm. high, circa 1780

87 A RARE LARGE DOME-LIDDED TANKARD by *Pitt & Dadley* (Cott. no. 3694), the drum with a single raised filet around lower waist and traces of an erased monogram at front, the cover with scroll purchase and the handle with fishtail terminal, 22cm. overall, circa 1780-1810

*** For a similar type of Tankard see Cotterell's 'Old Pewter . . .' Pl. XLId

88 A baluster-shaped Scots pint Measure, the dished cover cast with capacity seal and having shell thumbpiece, 16.5cm., mid-19th Century

89 A similar $\frac{1}{2}$ -pint Measure by *Lowe of Glasgow*, 14cm., mid-19th Century

90 A pear-shaped Scots pint Measure with sealed domed cover and shell thumbpiece, the lip rim with Falkirk verification marks, 16cm., circa 1830

91 Two further Scots baluster Measures of $\frac{1}{2}$ -pint and gill size, 13.3cm. and 10.2cm., 19th Century (both with replacement lids) (2)

92 A PAIR OF SCOTS COMMUNION CUPS with deep bucket-shaped bowls raised on knopped stems and domed bases, 22.1cm. overall, circa 1830 (2)

93 AN IDENTICAL PAIR OF COMMUNION CUPS. (2)

94 A lidless Scots $\frac{1}{2}$ -pint baluster-shaped Measure with uncut hinge lug at top of handle, 11.4cm.; another, similar, with Aberdeen verification stamp on lip, 11.3cm.; and another of gill size with various verification marks including Aberdeen, 9cm., all circa 1830-50 (3)

95 A GOOD SCOTS CRESTED 'TAPPIT-HEN' of typical form, the body engraved at front with owner's initials ^{LB}EB, 30.2cm. overall, 2nd half 18th Century

96
typic
made
with
twin-
Cent

97
with
high,

98
pint
top a
dome
handl
19th

99
three
St., 1
addre
1840

100
but s
with
tavern
gram,

101
inscri
19th

102
body
palme

103
in ba
comp
long,
18th/.

96 A SCOTS COMMUNION FLAGON OR LAVER of typical tapering form with raised filet at waist made by *Stephen Maxwell of Glasgow*, the lip with stamped initials ^{RW}AC, the dished cover with twin-cusped purchase, 25cm. overall, late 18th Century

97 A SCOTS BALUSTER MEASURE of quart capacity with flat cover and embryo-shell thumbpiece, 20cm. high, circa 1820-30

98 A lidded Ale or Cider Pitcher of uncommon pint capacity, the shouldered body with collar at top and spout with perforated grating at front, the domed cover with solid chairback thumbpiece, the handle of 'overlapped' type, 6in. high, 1st half 19th Century

99 A LARGER ALE PITCHER of similar outline and three pint capacity by *C. Bentley of Woodstock St.*, the base inscribed Wingfield Brewery with address, the front with a monogram, 9in., circa 1840

100 ANOTHER ALE PITCHER of similar capacity but squatter form by *Grimes & Son*, the cover with open chairback thumbpiece, the base with a tavern inscription, the front engraved with monogram, 8in., circa 1820-40

101 A lidless Ale Jug of quart capacity, also with inscription and monogram, 6½in. high, 1st half 19th Century

102 A LIDDED ALE PITCHER of quart capacity, the body of baluster shape and the domed cover with palmette thumbpiece, 7¼in., 19th Century

103 A rectangular box-type Inkstand with drawer in base and hinged cover opening to reveal two compartments for ink and sand sprinkler, 5½in. long, late 18th Century; and a Wine Funnel, 6½in., 18th/19th Century (2)

104 A GEORGIAN DOME-LID TANKARD by *EG* (Cott. no. 5611), the slightly tapering body with a band of incised reeding around foot and lower waist, the double-domed cover with scroll thumbpiece, the handle with boot-heel terminal, 5½in. high, circa 1730

EUROPEAN PEWTER

105 A NORMANDY FLAGON or Pichet of typical form and quart capacity, the handleback inscribed *L. FOULNON*, 8¾in. (22.3cm.) high, circa 1800

Different Properties

106 A circular continental Dish with reeded wavy-edged rim, 14¾in. (37.5cm.) diam., French or Flemish, 18th Century

107 A continental Dish, the upcurved single-reeded rim stamped with initials *JFVAB*, 17in. (43cm.) diam., probably Low Countries, 18th Century

108 A pair of square-based Cup Salts, the lower section of the bowls cast with oak-leaf decoration, 2¼in. (5.8cm.), probably Swiss, early 19th Century

109 A wavy-edged Italian Plate engraved with a portrait of *Pasquale Cicogna* as Doges, the rim and border of the well with acanthus ornament, 9¼in. (23.4cm.), late 18th or early 19th Century

** *Pasquale Cicogna* was Doges from 1585-1595

110 A continental Milk Jug with ovoid body, wide spout and high looped handle, 7¼in. (18.5cm.), probably Friesian, early 19th Century; and a Chinese Tea Cannister, 6½in. (16.5cm.) high (2)

111 A set of five small plain-rimmed North Italian Plates with touchmarks on reverse, 7¾in. (18.5cm.) diam., 19th Century; and an English Plate with touch and owner's initials *IB* on reverse, 9¼in. (23.5cm.), 18th Century (6)

112 A circular Plate embossed with a grotesque mask by *Christian Schweiger of Nuremberg*, 9¼in. (23.5cm.); and a French demi-litre cylindrical Measure with circular cover falling inside a sloping collar by *Leclerc Humbert of Lille*, 6¾in. (17.3cm.), both 19th Century (2)

113 A continental Dish with upcurved single-reeded rim engraved all over with scrolling motifs, 15½in. (40cm.) diam., 18th Century, probably *Flemish*

114 An Hungarian Plate by *Beyerbach*, the rim with beaded border and engraved initials HIK, 9¾in. (23.9cm.); and a wavy-edged German Plate of similar size, both 18th Century (2)

115 AN AUSTRO-HUNGARIAN DISH decorated all over in wriggled work with scrolling floral motifs and centred by an half-length figure of a man holding a sprig, the rim with a cartouche inscribed IK. M. Christian Spies. 1703. CWS. and stamped with town and makers marks, 15in. (43cm.) diam., early 18th Century (some repair)

116 A TYROLESE FLAGON OR 'STITZEN' of typical tapering form with moulded spout and domed cover engraved GS with heart-shaped projection over spout and erect thumbgrip, maker's mark inside base, 10½in. (26.5cm.) overall, 18th Century

117 A NORMANDY FLAGON of pot capacity and typical shouldered form with heart-shaped cover and twin-acorn thumbgrip, 10½in. (25.5cm.), circa 1800

118 A continental Bowl with touch of AB on base, 5in. (13cm.) diam.; and a footed Bowl with two loop handles, 6½in. (16.5cm.), both 18th/19th Century; and a pair of Plates with maker's touch HDA on rims, 10½in. (24cm.) diam. (4)

119 A Flemish Dish by *Francis (? cus) de Cocq*, the single-reeded rim stamped ICV- 1881-FIVDB, 13¾in. (35cm.); and a Dish of similar size and type by *HIPG* initialled JJM-JBE, both 19th Century (2)

120 An attractive wavy-edged continental Salver engraved in wriggled work with a basket of flowers, the rim with a foliate band, 12¼in. (31cm.) diam., probably *French of Flemish*, 18th Century

121 A CHALICE with domed base and spreading foot rim, the bowl raised on cylindrical stem with large flattened knop in centre, 5¾in. (15cm.), probably *French or Flemish*, late 17th Century; and an associated Paten with shallow well and broad plain rim, 5¼in. (13.3cm.) diam. (2)

122 A Friesian Bowl with caryatid handles and relief-cast foot rim, the body engraved with flower-heads in wriggled work, 4in. (10cm.) high, 18th Century

** For an illustration of this type see H. H. Cotterell 'Pewter Down the Ages', fig. 92.

123 A SWEDISH TANKARD by *C. G. Wigholm or C. G. Wahlberg of Gävle*, the straight-sided body engraved with floral work above a band of swags, the domed cover set with a medallion showing King Oscar and having erect thumbpiece cast with cross hatching, 8in. (20.3cm.) high, circa 1857

124 ANOTHER SWEDISH TANKARD of similar general type but undecorated, the cover cast with a medallion of King Oscar and having plumed thumbpiece, maker's mark ? NEJ inside base, 7¼in. (18.5cm.) circa 1870

125 A SQUARE FLASK with circular screw-on cover and ring carrying handle, each side cast with half-length figure of Christ with orb and hand raised in blessing, one panel inscribed O. Infirmorum, 5¾in. (14.5cm.) overall, probably *German*, 17th Century

126 A circular German Dish with upcurved single-reeded rim by *Christoph Ruprecht of Augsburg*, the reverse engraved with owners' initials MAP, 13¾in. (34.8cm.) diam., circa 1730

127 A
decora
wood
initials

128 A
engrav
wood

129 A
II dep
with t
six mo
in oval
(faults)

130 A
the m
Ferdin
around
cartouc
(19.1cm)

131 A
'Tempe
a cent
baptism
beginni
the w
figures
and Sc

132 A
probabi
Joachin
the Cre
Eden b
by put
and ere
with str
1600 (ti

** A
Mory

127 A German rococo pear-shaped Coffee Pot decorated all over with spiral flutes and having wood handle, the front engraved with owner's initials IMB, $8\frac{1}{2}$ in. (22cm.) high, circa 1760

128 An identical Coffee Pot of smaller size also engraved IMB, $7\frac{1}{4}$ in. (18.5cm.), circa 1760 (the wood handle a later replacement)

129 A NUREMBERG KAISERTELLER by *Hans Spatz II* depicting Ferdinand III on horseback in centre with the mold maker's initials GH, the rim with six mounted figures of the Electors of the Empire in oval cartouches, $7\frac{1}{8}$ in. (18cm.) diam., 1630-1670 (faults)

130 ANOTHER KAISERTELLER from the mould of the master *L or AL* (1630-70) also depicting Ferdinand III on horseback with the six Electors around the rim, makers' mark *OW ?* stamped in cartouche depicting the Elector of Mainz, $7\frac{1}{2}$ in. (19.1cm.) diam.

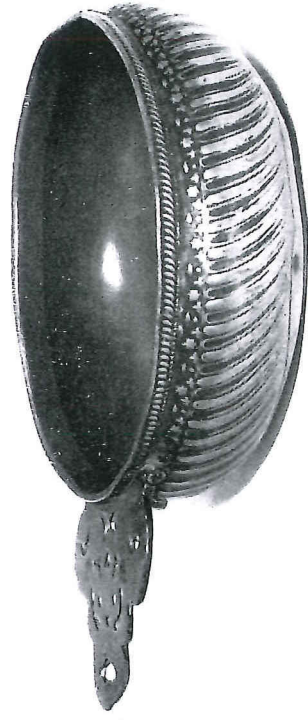
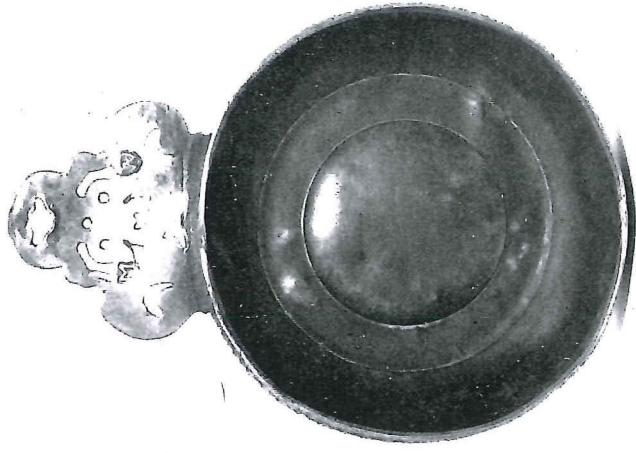
131 A RELIEF-CAST DISH mainly after the famous 'Temperantia' model by François Briot but having a central boss set with a medallion depicting a baptismal scene and incorporating the legend beginning, *Christus Sanctifica Vit Eclesia . . .*, the well with Cartouches depicting allegorical figures of the Elements and the rim with the Arts and Sciences, $17\frac{3}{4}$ in. (45cm.) diam.

132 A RARE SAXON RELIEF-CAST TANKARD most probably by *Hans Wildt the younger of Joachimstal*, the body with biblical scenes from the Creation to the Expulsion from the garden of Eden between borders of scrolling foliage inhabited by putti, the cover with further band of relief and erect ridged thumbpiece, the handleback cast with strapwork, $6\frac{1}{4}$ in. (15.8cm.) overall, circa 1590-1600 (the cover knop wanting)

** A similar Tankard is illustrated by Ludwig Mory in 'Schönes Zinn', pl 65

(See Frontispiece)

END OF SALE



70



132

Sotheby Parke Bernet & Co.

34-35 New Bond Street, London W1A 2AA

Sale of BRITISH AND EUROPEAN PEWTER

Wednesday, 16th March, 1977

"QUICK"

The price shown is the hammer price and subject to a 10% premium.

Lot	£	Lot	£	Lot	£	Lot	£
1	110.00	36	160.00	66	120.00	101	140.00
2	130.00	37	85.00	67	180.00	102	230.00
3	80.00	38	75.00	68	100.00	103	90.00
4	80.00	39	90.00	69	390.00	104	220.00
5	70.00	40	210.00	70	3000.00	105	320.00
6	150.00	41	80.00	71	140.00	106	150.00
7	130.00	42	110.00	72	210.00	107	55.00
8	165.00	43	65.00	73	95.00	108	48.00
9	85.00	44	55.00	74	100.00	109	55.00
10	80.00	45	95.00	75	80.00	110	45.00
11	145.00	46	100.00	76	100.00	111	140.00
12	150.00	47	340.00	77	130.00	112	65.00
13	130.00	48	460.00	78	65.00	113	80.00
14	110.00	49	45.00	79	150.00	114	80.00
15	120.00	50	125.00	80	110.00	115	100.00
16	85.00	51	190.00	81	95.00	116	150.00
17	160.00	52	85.00	82	180.00	117	175.00
18	40.00	53	95.00	83	95.00	118	65.00
19	100.00	54	95.00	84	140.00	119	130.00
20	110.00	55	80.00	85	460.00	121	260.00
21	120.00	55a	55.00	86	240.00	122	100.00
22	65.00	55b	55.00	87	340.00	123	230.00
23	55.00	55c	58.00	88	140.00	124	230.00
24	48.00	55d	95.00	89	70.00	125	305.00
25	70.00	55e	110.00	90	110.00	126	115.00
26	60.00	56	110.00	91	55.00	127	100.00
27	150.00	57	160.00	92	200.00	128	65.00
28	60.00	58	320.00	93	220.00	129	95.00
29	175.00	59	520.00	94	170.00	130	110.00
30	110.00	60	90.00	95	380.00	132	520.00
31	75.00	61	48.00	96	280.00		
32	150.00	62	170.00	97	360.00		
33	95.00	63	130.00	98	260.00		
34	75.00	64	110.00	99	320.00		
35	160.00	65	100.00	100	350.00		

In this sale the above lots were sold at the prices stated. Lot numbers which are omitted represent items which were withdrawn, passed, or unsold.

SPB4037/G