

GDD

CATALOGUE 4373

BOWMAN ET AL. PEWTER & FURNITURE

FEBRUARY 11, 12, 1938

SALE NUMBER 4373

PUBLIC EXHIBITION FROM SATURDAY, FEBRUARY FIFTH
[WEEKDAYS 9-6 P. M. • SUNDAY 2-5 P. M.]

EARLY AMERICAN PEWTER

THE NOTABLE COLLECTION FORMED BY

ALBERT C. BOWMAN

SPRINGFIELD, VERMONT

PROPERTY OF

MRS. ALBERT C. BOWMAN

SOLD BY HER ORDER

TOGETHER WITH

EARLY AMERICAN FURNITURE & DECORATIONS

PROPERTY OF

MRS. ALBERT C. BOWMAN

& OTHER OWNERS

SOLD BY THEIR ORDER

TO BE SOLD BY AUCTION

FRIDAY & SATURDAY AFTERNOONS

FEBRUARY ELEVENTH & TWELFTH

AT TWO O'CLOCK

**AMERICAN ART ASSOCIATION
ANDERSON GALLERIES · INC**

[MITCHELL KENNERLEY, PRESIDENT]

30 EAST 57TH STREET · NEW YORK

1938

THE ALBERT CHASE BOWMAN COLLECTION
OF EARLY AMERICAN PEWTER

THE popularity of early American pewter is nowhere more clearly manifested than in the records of such of our sales as have contained examples of this ware. Such is the esteem in which it is held today that it is no exaggeration to say that marked specimens of the work of American pewterers active prior to the American Revolutionary War, or during the two decades following it, are as eagerly sought for today as are the products of their aristocratic contemporaries who worked in silver. To the Pewter Collector's Club of America, in which Mr. Albert Chase Bowman held membership, much is due for their efforts directed towards the advancement of knowledge of this particular branch of Americana. To this body belongs the credit for the first national exhibition of pewter to be held in this country, which took place in the Public Library of the City of Boston in November and December, 1935. Another of the club's activities was the pewter exhibit which formed part of the Harvard Tercentenary Exhibition.

We believe this to be the first time that an important collection of marked American pewter has appeared at public sale in New York. The fact that it represents a long period of diligent and painstaking search on the part of Mr. Bowman is evident to anyone at all familiar with the subject. The collection comprises upwards of four hundred pieces, each piece bearing a maker's 'touch', and derives distinction from the large number of pieces by the so-called 'eight-inch plate men'. The later, or 'coffee pot era', leading up to the period which saw the final extinction of the art, is represented by a variety of objects which conform to our popular conception of what was considered fashionable in table ware approximately one hundred years ago. Aided by Mr. J. B. Kerfoot's *tour de force*, and those gently correcting *Notes* by Louis G. Myers, the catalogue endeavors to acquaint the reader with the merits of the individual pieces in the collection, with what success we may learn from Mr. Ledlie I. Laughlin's new book on American pewter.

C. P.

FIRST SESSION

THE ALBERT C. BOWMAN COLLECTION

OF EARLY AMERICAN PEWTER

NUMBERS 1-218

18
1750 1 PLATE NATHANIEL AUSTIN, BOSTON, MASS., 1741-1816
Superb touches. Kerfoot, fig. 70. Rare. *Diameter, 8 inches*

14
30
30
19
11-2 PLATE NATHANIEL AUSTIN, BOSTON, MASS., 1741-1816
Flat border with initials *D.M.* Kerfoot, figs. 70 and 71.
Diameter, 9½ inches

11-3 PLATE NATHANIEL AUSTIN, BOSTON, MASS., 1741-1816
Imperfection on border. Kerfoot, figs. 70 and 71.
Diameter, 12¼ inches

750 4 PLATE NATHANIEL AUSTIN, BOSTON, MASS., 1741-1816
Border partly detached. Kerfoot, figs. 70 and 71.
Diameter, 13½ inches

17-5 PLATE NATHANIEL AUSTIN, BOSTON, MASS., 1741-1816
With flat rim. Kerfoot, figs. 70 and 71. Rare. Good state.
Diameter, 15 inches

1750 6 PLATE NATHANIEL AUSTIN, BOSTON, MASS., 1741-1816
Good touches; has repair in cavetto. Kerfoot, figs. 70 and 71.
Diameter, 15 inches

15-7 BASIN NATHANIEL AUSTIN, BOSTON, MASS., 1741-1816
With eagle touch inside. Kerfoot, fig. 73. Good state.
Diameter, 8 inches

- 12⁵⁰ 8 **BASIN**
 RICHARD AUSTIN, BOSTON, MASS., W. [WORKED] 1773-1817
 In good condition. Dove-and-fox touch inside. Kerfoot, fig. 110. *Diameter, 8 inches*
- 15- 9 **PLATE** RICHARD AUSTIN, BOSTON, MASS., W. 1773-1817
 R. A. Boston touch; engraved fancy initials *M.F.* Kerfoot, fig. 112. *Diameter, 7 $\frac{3}{4}$ inches*
- 17⁵⁰ 10 **PLATE** RICHARD AUSTIN, BOSTON, MASS., W. 1773-1817
 Dove-and-fox touch. Kerfoot, fig. 110. Good state. *Diameter, 8 $\frac{1}{2}$ inches*
- 40- 11 **PLATE** RICHARD AUSTIN, BOSTON, MASS., W. 1773-1817
 Has Massachusetts coat of arms touch. Kerfoot, fig. 68. Good state. *Diameter, 12 $\frac{1}{4}$ inches*
- [SEE ILLUSTRATION OPPOSITE PAGE 16]
- 75- 12 **PLATE** RICHARD AUSTIN, BOSTON, MASS., W. 1773-1817
 Massachusetts coat of arms touch, with R. AUSTIN below. Kerfoot, fig. 67. No plate showing name with initial is listed by Kerfoot. Possibly unique. *Diameter, 13 $\frac{1}{2}$ inches*
- 17⁵⁰ 13 **PLATE** RICHARD AUSTIN, BOSTON, MASS., W. 1773-1817
 R. A. Boston touch. Kerfoot, fig. 112. *Diameter, 13 $\frac{1}{2}$ inches*
- 60- 14 **PLATE** RICHARD AUSTIN, BOSTON, MASS., W. 1773-1817
 Massachusetts coat of arms touch with initial of name obliterated. Kerfoot, fig. 67. Rare. *Diameter, 15 inches*
- 45- 15 **PLATE** RICHARD AUSTIN, BOSTON, MASS., W. 1773-1817
 R. A. Boston and dove-and-fox touch. Kerfoot, figs. 110, 111, and 112. Rare. *Diameter, 15 inches*

- 15- 16 **PLATE**
 Good state
- 10- 17 **PLATE**
 Rim damage
- 15- 18 **TWO PLATE**
 One cleaned
 figs. 146 and 147
- 15- 19 **PLATE**
 Touches shown
- 15- 20 **BOWL**
 FB and fleur-de-lis
 foot, fig. 46.
- 25- 21 **PLATE**
 Three good
- 7- 22 **PLATE**
 Touches shown
- 20- 23 **PLATE**
 Three touches
- 22⁵⁰ 24 **PLATE**
 Three touches

- 1817
fig.
ches
- 15-16 **PLATE** THOMAS BADGER, BOSTON, MASS., 1735-1809(?)
Good state and touches. Kerfoot, figs. 95 and 96.
Diameter, 13½ inches
- 1817
, fig.
ches
- 10-17 **PLATE** THOMAS BADGER, BOSTON, MASS., 1735-1809(?)
Rim damaged and torn. Kerfoot, figs. 95 and 96.
Diameter, 15 inches
- 1817
- 15-18 **TWO PLATES** B. BARNS, PHILADELPHIA, CIRCA 1812
One cleaned. Two versions of this pewterer's touch. Kerfoot,
figs. 146 and 149. *Diameter, 7⅞ inches*
- ches
- 1817
- 15-19 **PLATE** STEPHEN BARNS, PHILADELPHIA (?), CIRCA 1790
Touches somewhat rubbed. Not listed by Kerfoot.
Diameter, 7⅞ inches
- ood
ches
- 1817
- 15-20 **BOWL** FREDERICK BASSET, NEW YORK, N. Y., 1740-1800
FB and fleur-de-lis touch underneath. Bottom pierced. Ker-
foot, fig. 46. Scarce. *Diameter, 6½ inches*
- low.
sted
ches
- 25-21 **PLATE** FREDERICK BASSETT, NEW YORK, N. Y., 1740-1800
Three good touches. Kerfoot, fig. 48. *Diameter, 8½ inches*
- 1817
ches
- 7-22 **PLATE** FREDERICK BASSETT, NEW YORK, N. Y., 1740-1800
Touches somewhat rubbed. Kerfoot, fig. 48.
Diameter, 8½ inches
- 1817
iter-
ches
- 20-23 **PLATE** FREDERICK BASSETT, NEW YORK, N. Y., 1740-1800
Three touches. Kerfoot, fig. 48. Good state.
Diameter, 13½ inches
- 1817
111,
ches
- 22⁵⁰-24 **PLATE** FREDERICK BASSETT, NEW YORK, N. Y., 1740-1800
Three touches, somewhat rubbed. Kerfoot, fig. 48.
Diameter, 15 inches



[57]

[173]

[25]

235-25 **FLAT-TOPPED TANKARD**

FREDERICK BASSETT, NEW YORK, N. Y., 1740-1800
 Nearly cylindrical, with hinged flap cover, S-scroll handle,
 scrolled thumbpiece. F. B. mark inside. Very rare.

Height, 6¾ inches

Another version of Frederick Bassett's flat-topped tankard is
 illustrated by Kerfoot in *American Pewter*, fig. 20.

[SEE ILLUSTRATION]

60-26 **PORRINGER**

FREDERICK BASSETT, NEW YORK, N. Y., 1740-1800
 FB touch on back of handle. Kerfoot, fig. 46a.

Diameter, 5 inches

[SEE ILLUSTRATION OPPOSITE PAGE 18]

35-27 **PLATE** JOSEPH BELCHER, NEW LONDON, CONN., W. 1728-(?)
 Two touches. Kerfoot fig. 87. Good state.

Diameter, 8 inches

225-28 **PLATE** WILLIAM BILLINGS, PROVIDENCE, R. I., W. 1768-1813
 Three fine touches and good patina. Kerfoot, fig. 103.

Diameter, 8¼ inches

[SEE ILLUSTRATION OPPOSITE PAGE 16]

40-29 **PLATE**
 Good charge
 rary engra
 Rare.

30-30 **PLATE**
 Has deep
 Rare.

50-31 **PORRINGER**
 W.B. and a
 not listed in
 [s

40-32 **TEAPOT A**
 Of differen
 N. YORK.

35-33 **FOUR-PIE**
 Teapot, cov
 lion mark.

25-34 **PLATE**
 Good state

275-35 **FOUR PLA**
 BOAR
 By T. D. B
 Co. Some i
 [SEE I

20-36 **COMMUNI**
 Dome-toppe

40-29 **PLATE** WILLIAM BILLINGS, PROVIDENCE, R. I., W. 1768-1813
Good charger with superb touches. Deep cavetto, contemporary engraved initials, *T.B.(?)*, on back. Kerfoot, fig. 103.
Rare. *Diameter, 14¾ inches*

30-30 **PLATE** WILLIAM BILLINGS, PROVIDENCE, R. I., W. 1768-1813
Has deep cavetto, touches partly rubbed. Kerfoot, fig. 103.
Rare. *Diameter, 15 inches*

50-31 **PORRINGER**
WILLIAM BILLINGS, PROVIDENCE, R. I., W. 1768-1813
W.B. and anchor touch on face of handle. Mark apparently not listed in Kerfoot or Myers. Rare. *Diameter, 4¾ inches*

[SEE ILLUSTRATION OPPOSITE PAGE 18]

40-32 **TEAPOT AND WATER PITCHER**
BOARDMAN, HARTFORD AND NEW YORK, CIRCA 1830
Of different shapes; both have lion mark. Teapot marked N. YORK. *Heights, 7¾ and 10½ inches*

35-33 **FOUR-PIECE TEA SERVICE**
BOARDMAN, HARTFORD, CONN.(?), CIRCA 1830
Teapot, covered sugar bowl, coffee pot and cream jug, all with lion mark. Kerfoot, fig. 210.

25-34 **PLATE** BOARDMAN, HARTFORD, CONN.(?), CIRCA 1825
Good state and touches. Kerfoot, fig. 210. Scarce. *Diameter, 8½ inches*

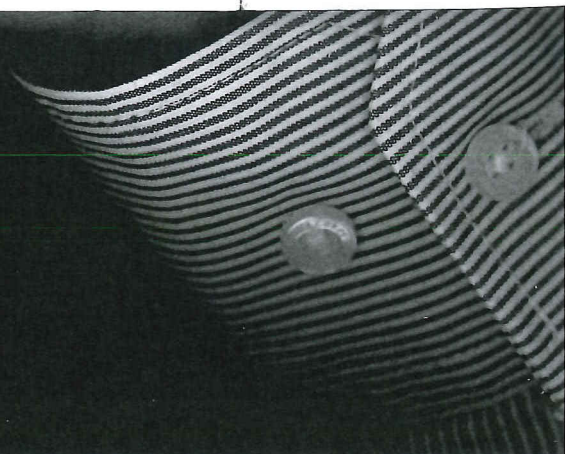
275-35 **FOUR PLATES**
BOARDMAN, HARTFORD AND NEW YORK, CIRCA 1820-1830
By T. D. Boardman, T. D. & S. Boardman, and Boardman & Co. Some imperfect. *Diameters, 6 to 9¼ inches*

[SEE ILLUSTRATION OF ONE OPPOSITE PAGE 16]

20-36 **COMMUNION FLAGON**
BOARDMAN & CO., NEW YORK, N. Y., CIRCA 1825
Dome-topped, with eagle touch under foot. Kerfoot, fig. 213. *Height, 9¼ inches*

- 25- 37 **COFFEE POT, TEAPOT, AND SUGAR BOWL**
BOARDMAN & CO., NEW YORK, N. Y., CIRCA 1825
All with eagle touch underneath.
- 15- 38 **TWO BASINS** BOARDMAN & CO., NEW YORK, N. Y., CIRCA 1825
One fine, with U. S. shield and eagle touch in the centre; the
other larger with rubbed touch. Kerfoot, fig. 215.
Diameters, 8 and 11½ inches
- 22⁵⁰- 39 **TWO BASINS** BOARDMAN & CO., NEW YORK, N. Y., CIRCA 1825
Eagle touch inside both. Kerfoot, fig. 216.
Diameter, 6½ inches
- 47⁵⁰- 40 **PORRINGER** BOARDMAN & CO., NEW YORK, N. Y., CIRCA 1825
Rococo acanthus and scrolled handle with good touch on face.
Kerfoot, fig. 213. *Diameter, 5 inches*
- 20- 41 **FLAGON** BOARDMAN & CO., NEW YORK, N. Y., CIRCA 1825
So-called half-domed lid without finial. Good eagle touch
underneath. Kerfoot, fig. 213. Very scarce.
Height, 7¾ inches
- 10- 42 **PLATE** BOARDMAN & CO., NEW YORK, N. Y., CIRCA 1825
Good state and touches. Kerfoot, fig. 217.
Diameter, 10¾ inches
- 30- 43 **TWO PITCHERS, MUG, AND PAIR OF BEAKERS**
BOARDMAN & HART, NEW YORK, N. Y., CIRCA 1830
22⁵⁰-43A A water pitcher, a measure, a mug, and a good pair of small
beakers. All marked. Kerfoot, fig. 222.
- 25- 44 **COFFEE POT AND TWO TEAPOTS**
BOARDMAN & HART, NEW YORK, N. Y., CIRCA 1830
Varying in shape. All marked. *Heights, 7½ to 11 inches*
- 80 45 **COMMUNION FLAGON**
BOARDMAN & HART, NEW YORK, N. Y., CIRCA 1830
Eagle touch under foot; also BOARDMAN & HART, N. YORK.
Scarce. *Height, 12½ inches*
- 10 46 **PLATE** BOARDMAN & HART, NEW YORK, N. Y., CIRCA 1830
Fairly deep cavetto and good touches. Kerfoot, fig. 222.
Diameter, 8⅞ inches

- 15- 47 **TWO PL**
One has g
188 and
- 7⁵⁰- 48 **PLATE**
Deep cav
- 9- 49 **PLATE**
Deep pla
- 12⁵⁰- 50 **PLATE**
Has deep
- 27⁵⁰- 51 **THREE**
22⁵⁰-57A Basins w
Kerfoot,
- 110- 52 **COMMUN**
Tall flag
shaped c
- 15- 53 **TWO TE**
Varying
- 45- 54 **TWO PA**
A fine pe
All mark



15- 47 **TWO PLATES**
THOMAS D. BOARDMAN, HARTFORD, CONN., 1784-1873
One has good touches, the other rubbed touches. Kerfoot, figs.
188 and 189. *Diameters, 7 $\frac{3}{4}$ inches*

750 48 **PLATE** THOMAS D. BOARDMAN, HARTFORD, CONN., 1784-1873
Deep cavetto, touches somewhat rubbed. Kerfoot, fig. 186.
Diameter, 9 $\frac{1}{4}$ inches

9- 49 **PLATE** THOMAS D. BOARDMAN, HARTFORD, CONN., 1784-1873
Deep plate with small repair at centre. Kerfoot, fig. 188.
Diameter, 11 inches

[SEE ILLUSTRATION OPPOSITE PAGE 16]

1250 50 **PLATE** THOMAS D. BOARDMAN, HARTFORD, CONN., 1784-1873
Has deep cavetto and good touches. Kerfoot, fig. 188.
Diameter, 13 inches

27581 51 **THREE BASINS AND A PORRINGER**
THOMAS D. BOARDMAN, HARTFORD, CONN., 1784-1873
225057A Basins with eagle touch inside. Porringer with T. D. B. mark.
Kerfoot, figs. 135 and 183. *Diameters, 3 $\frac{1}{2}$ to 8 inches*

110- 52 **COMMUNION SET**
T. D. & S. BOARDMAN, HARTFORD, CONN., 1830-40
Tall flagon, two eleven-inch deep plates, and two beaker-
shaped cups. Cups unmarked. Myers, p. 15.

15- 53 **TWO TEAPOTS AND A COFFEE POT**
T. D. & S. BOARDMAN, HARTFORD, CONN., 1830-40
Varying in shape. All marked. *Heights, 8 $\frac{1}{2}$ and 9 inches*

45- 54 **TWO PAIRS OF BEAKERS**
T. D. & S. BOARDMAN, HARTFORD, CONN., 1830-40
A fine pair of tall beakers; the smaller pair with flaring foot.
All marked. *Heights, 3 $\frac{3}{4}$ and 5 $\frac{1}{4}$ inches*

- 2 27⁵⁰ 55 **TWO MUGS AND TWO BASINS**
T. D. & S. BOARDMAN, HARTFORD, CONN., 1830-40
Quart mug and pint mug, and two five and three-quarter inch
basins. Kerfoot, fig. 230. All but one basin marked.
- 1 20-56 **TWO PORRINGERS**
T. D. & S. BOARDMAN, HARTFORD, CONN., 1830-40
Both with T. D. & S. B. mark on handle. Kerfoot, fig. 230.
Diameters, 4 1/2 and 5 inches
- 2 85-57 **DOME-TOP TANKARD**
T. D. & S. BOARDMAN, HARTFORD, CONN., 1830-40
Domed lid; tall tankard in mint state, marked underneath.
Myers, p. 15. Kerfoot, fig. 215. *Height, 8 1/4 inches*
[SEE ILLUSTRATION ON PAGE 4]
- 2 20-58 **PLATE** P. BOYD, PHILADELPHIA, CIRCA 1800
Scarce plate with eagle-and-stars touch. Kerfoot, fig. 117.
Diameter, 7 7/8 inches
- 1 80-59 **COMMUNION FLAGON AND FOUR CUPS**
WILLIAM CALDER, PROVIDENCE, R. I., 1792-1856
Flagon marked under foot. Beaker-shaped cups unmarked.
From the Baptist Church, Cornville, Maine.
- 3 40-60 **TEAPOT, PORRINGER, AND PLATE**
WILLIAM CALDER, PROVIDENCE, R. I., 1792-1856
Teapot pear-shaped; four and one-quarter inch porringer.
Both with eagle touch. Seven and seven-eighths inch plate,
with eagle touch. Kerfoot, fig. 203.
- 2 8 17⁵⁰ 61 **TWO WICK LAMPS AND A MUG**
WILLIAM CALDER, PROVIDENCE, R. I., 1792-1856
All marked CALDER.
- 1 12⁵⁰ 62 **TWO WICK LAMPS**
CAPEN & MOLINEUX, NEW YORK, N. Y., CIRCA 1850
Cabin lamp and a hand lamp. Marked underneath.
Heights, 7 1/2 and 8 1/2 inches

- 63 ENAMEL
60- Slightly ro
within a ra
gold leaf.
One of ap
pewter kno
at the Har
- 64 TWO TEA
12⁵⁰ Different
first grade
- 65 PLATE
17⁵⁰ A deep pla
fig. 192. (
- 66 BOWL
50⁵⁰ Good stat
One of Ke
- 67 PINT MU
15- Nearly cy
foot's first
- 68 PLATE
20- Two disti
98. One c
- 69 PLATE
15- Nicely pa
One of Ke
- 70 PLATE
7⁵⁰ Repaired
of Kerfoc

63 ENAMELED SNUFFBOX

GEORGE COLDWELL, NEW YORK, N. Y., CIRCA 1795

60-

Slightly rounded hinged lid embellished with cross-hatching within a raised oval border, in green enamel, embellished with gold leaf. Bottom stamped COLDWELL. *Length, 2 3/4 inches*

One of apparently only two pieces of American enameled pewter known. An enameled beaker by this maker was shown at the Harvard Tercentenary Exhibition.

64 TWO TEAPOTS

D. CURTISS, ALBANY (?), CIRCA 1825

102 50

Different in shape. Both marked inside. One of Kerfoot's first grade of rarities. *Heights, 7 1/2 and 8 inches*

65 PLATE

D. CURTISS, ALBANY (?), CIRCA 1820

17 50

A deep plate, in good state, with two distinct touches. Kerfoot, fig. 192. One of Kerfoot's first grade of rarities.

Diameter, 11 inches

66 BOWL

I. CURTISS, NEW YORK (?), CIRCA 1820

50 50

Good state with I. CURTISS mark inside. Kerfoot, fig. 206. One of Kerfoot's first grade of rarities. *Diameter, 6 inches*

67 PINT MUG

EDWARD DANFORTH, HARTFORD, CONN., 1765-1830

15-

Nearly cylindrical. Good state. Marked inside. One of Kerfoot's first grade of rarities.

68 PLATE

EDWARD DANFORTH, HARTFORD, CONN., 1765-1830

20-

Two distinct touches. Initials *M N* on border. Kerfoot, fig. 98. One of Kerfoot's first grade of rarities.

Diameter, 7 7/8 inches

69 PLATE

EDWARD DANFORTH, HARTFORD, CONN., 1765-1830

15-

Nicely patinated piece; has repair on edge. Kerfoot, fig. 98. One of Kerfoot's first grade of rarities. *Diameter, 12 1/4 inches*

[SEE ILLUSTRATION OPPOSITE PAGE 16]

70 PLATE

EDWARD DANFORTH, HARTFORD, CONN., 1765-1830

7 50

Repaired border and rubbed touches. Kerfoot, fig. 98. One of Kerfoot's first grade of rarities. *Diameter, 12 1/4 inches*

CONN., 1830-40
e-quarter inch
arked.

CONN., 1830-40
t, fig. 230.
1/2 and 5 inches

CONN., 1830-40
ed underneath.
ght, 8 1/4 inches

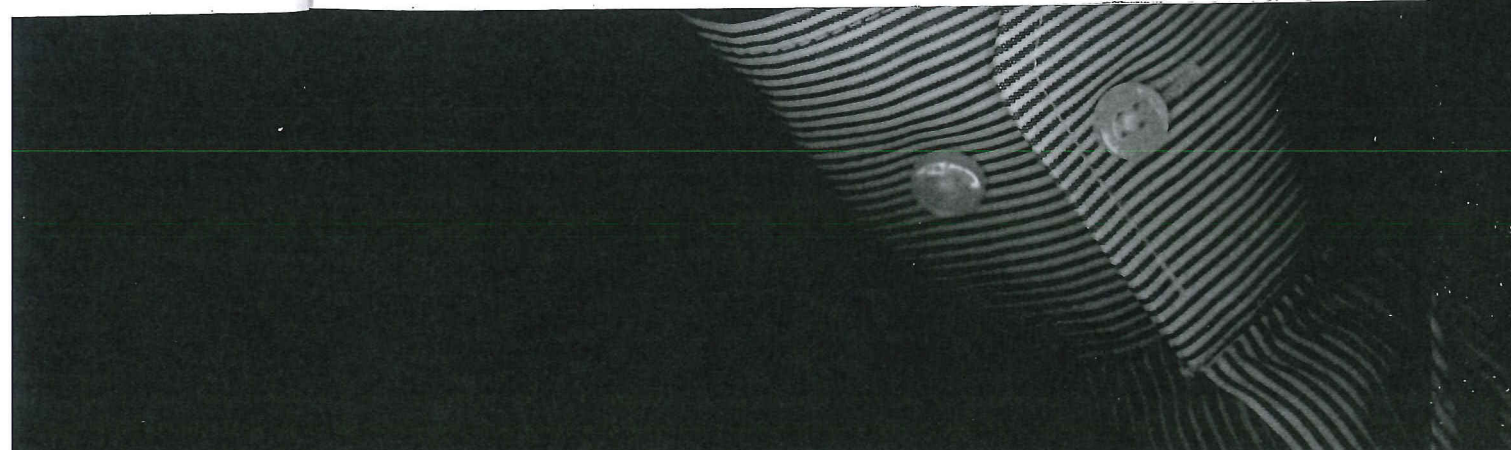
HIA, CIRCA 1800
ot, fig. 117.
eter, 7 7/8 inches

R. I., 1792-1856
os unmarked.

R. I., 1792-1856
inch porringer.
ths inch plate,

R. I., 1792-1856

I. Y., CIRCA 1850
eath.
and 8 1/2 inches



- 10 71 **PLATE** EDWARD DANFORTH, HARTFORD, CONN., 1765-1830
 Deep plate, with repair on rim. Kerfoot, fig. 98. One of Kerfoot's first grade of rarities. *Diameter, 13 $\frac{1}{4}$ inches*
- 10 72 **BOWL** J. DANFORTH, MIDDLETOWN, CONN., CIRCA 1825
 Splendid touch in centre of piece. Piece missing from rim. Kerfoot, fig. 200. One of Kerfoot's first grade of rarities. *Diameter, 7 $\frac{7}{8}$ inches*
- 25 73 **PLATE AND A LADLE**
 J. DANFORTH, MIDDLETOWN, CONN., CIRCA 1825
 Plate with two touches on the back. The ladle requires repairing. One of Kerfoot's first grade of rarities.
- 20 74 **COFFEE POT** J. DANFORTH, MIDDLETOWN, CONN., CIRCA 1825
 Bulbous body and domed lid. Good mark on bottom. One of Kerfoot's first grade of rarities. *Height, 11 $\frac{1}{2}$ inches*
- 25 75 **BOWL** J. DANFORTH, MIDDLETOWN, CONN., CIRCA 1825
 Mint condition. Partly rubbed eagle touch inside. Kerfoot, fig. 200. One of Kerfoot's first grade of rarities. *Diameter, 6 inches*
- 20 76 **TWO TEAPOTS**
 J. DANFORTH, MIDDLETOWN, CONN., CIRCA 1825
 Different in shape. J. DANFORTH mark underneath. *Heights, 6 $\frac{3}{4}$ and 8 $\frac{1}{2}$ inches*
- 30 77 **PORRINGER** J. DANFORTH, MIDDLETOWN, CONN., CIRCA 1825
 Fairly good mark on face of handle. Kerfoot, fig. 260. One of Kerfoot's first grade of rarities. *Diameter, 4 inches*

[SEE ILLUSTRATION OPPOSITE PAGE 18]

37⁵⁰ 78 **TWO PLA**
 Large pla

15 79 **PLATE**
 Deep cave
 Kerfoot, f

52⁵⁰ 80 **TWO PLA**

One with
 and hall 1

[SEE

37⁵⁰ 81 **COMMUN**

Unusually
 Kerfoot, 1

27⁵⁰ 82 **TWO PL**

Both with

50- 83 **SIX PLA**

Showing
 touch. K

35- 84 **TWO PO**

Showing
 handle. 1

37⁵⁰ 78 **TWO PLATES** JOHN DANFORTH, NORWICH, CONN., 1741-1799
Large plate with fine touches on back. Myers, p. 23.
Diameters, 9 $\frac{1}{4}$ and 13 $\frac{1}{4}$ inches

15 79 **PLATE** JOSEPH DANFORTH, MIDDLETOWN, CONN., 1758-1788
Deep cavetto. Good lion touches and 'hall marks' on back.
Kerfoot, fig. 42. *Diameter, 13 $\frac{1}{4}$ inches*

52⁵⁰ 80 **TWO PLATES**
JOSEPH DANFORTH, MIDDLETOWN, CONN., 1758-1788
One with flanged edge, one with plain border; lion touches
and hall marks. Kerfoot, fig. 42.
Diameters, 7 $\frac{3}{4}$ and 9 $\frac{1}{2}$ inches

[SEE ILLUSTRATION OF ONE OPPOSITE PAGE 16]

37⁵⁰ 81 **COMMUNION FLAGON**
SAMUEL DANFORTH, HARTFORD, CONN., 1774-1816
Unusually tall, with flaring base. Two touches under foot.
Kerfoot, figs. 133 and 139. Rare. *Height, 14 inches*

27⁵⁰ 82 **TWO PLATES**
SAMUEL DANFORTH, HARTFORD, CONN., 1774-1816
Both with two eagle touches on back. Kerfoot, figs. 133 and 135.
Diameters, 11 and 13 inches

50- 83 **SIX PLATES**
SAMUEL DANFORTH, HARTFORD, CONN., 1774-1816
Showing a variety of touches, including the rare spread eagle
touch. Kerfoot, figs. 134, 135, and 138.
Diameters, 7 $\frac{7}{8}$ and 6 inches

35- 84 **TWO PORRINGERS**
SAMUEL DANFORTH, HARTFORD, CONN., 1774-1816
Showing two varieties of this pewterer's touch on face of
handle. Kerfoot, figs. 133 and 138. *Diameters, 5 inches*

1250 85. **TWO BASINS**
SAMUEL DANFORTH, HARTFORD, CONN., 1774-1816
One perforated. Marked inside. *Diameters, 8 and 6½ inches*

3750 86 **TWO COMMUNION BEAKERS**
SAMUEL DANFORTH, HARTFORD, CONN., 1774-1816
One marked inside, one under foot. *Height, 5¼ inches*

5750 87 **TWO TEAPOTS**
SAMUEL DANFORTH, HARTFORD, CONN., 1774-1816
Almost a pair. Marked underneath. *Height, 8½ inches*

3750 88 **TWO PORRINGERS**
SAMUEL DANFORTH, HARTFORD, CONN., 1774-1816
One marked on handle, the smaller one marked inside. Kerfoot, fig. 136. *Diameters, 3¾ and 4¼ inches*

35 89 **PORRINGER**
THOMAS DANFORTH 2ND, MIDDLETOWN, CONN., 1731-1782
With lion rampant touch on back of handle. Kerfoot, fig. 126. *Diameter, 5 inches*

2250 90 **THREE BASINS**
THOMAS DANFORTH 2ND AND 3RD., CIRCA 1780-1810
Two by Thomas Danforth 2nd, of Middletown, Conn., with lion touch (one repaired). One by Thomas Danforth 3rd, of Philadelphia, Pa. Kerfoot, figs. 40 and 127. *Diameter, 7⅞ inches*

35-91 **FOUR PLATES**
THOMAS DANFORTH 1ST, 2ND, AND 3RD, CIRCA 1760-1840
Varying in size, the last a Danforth 1st plate with rampant lion touches and 'hall marks'. Kerfoot, figs. 38, 39, 129, and 130. *Diameters, 6 and 13 inches*

185 92 **PLATE**

Two eag
foot, figs
Mr. Bow
American

1774-1816
6½ inches

1774-1816
5¼ inches

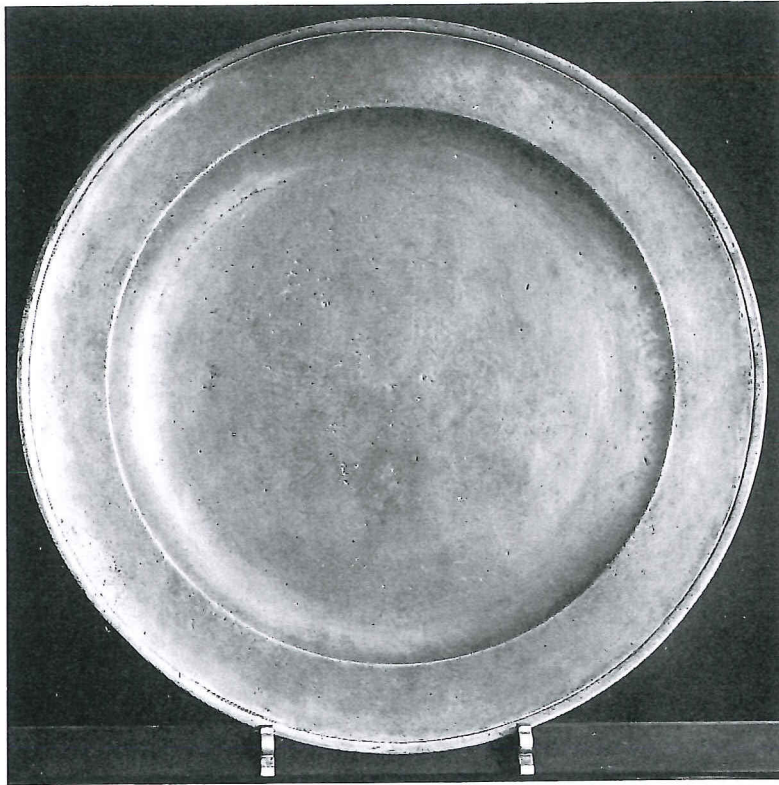
1774-1816
3½ inches

1774-1816
side. Ker-
1¼ inches

1731-1782
t, fig. 126.
c, 5 inches

1780-1810
mn., with
th 3rd, of
7/8 inches

1760-1840
rampant
129, and
13 inches



[NUMBER 92]

185 92 **PLATE OR CHARGER**

THOMAS DANFORTH, 3RD, PHILADELPHIA, 1756-1840
Two eagle touches and T. DANFORTH PHILAD on back. Ker-
foot, figs. 130 and 131.

Mr. Bowman considered this the only eighteen-inch marked
American plate known. None is listed by Kerfoot or Myers.

Diameter, 18 inches

[SEE ILLUSTRATION]

30 93 **TWO COFFEE POTS AND TWO WATER PITCHERS**
R. DUNHAM, PORTLAND, MAINE, 1830-40
All marked underneath and varying in shape. Kerfoot, fig. 69.

20 94 **CRUET, TWO CANDLESTICKS, AND TWO WICK LAMPS**
R. DUNHAM, PORTLAND, MAINE, 1830-40
All marked.

35 95 **COFFEE URN**
ROSWELL GLEASON, DORCHESTER, MASS., CIRCA 1830
Marked R. GLEASON under socle. Identical with urn illustrated by Kerfoot, pl. 71. *Height, 14 $\frac{3}{4}$ inches*

110 96 **COMMUNION SET**
ROSWELL GLEASON, DORCHESTER, MASS., CIRCA 1830
Tall flagon, a nine and one-quarter inch plate, and a pair of chalices. Flagon and plate marked, chalices unmarked. Kerfoot, figs. 234 and 235.

15 97 **TWO CRUETS, A SUGAR BOWL, AND A MUG**
ROSWELL GLEASON, DORCHESTER, MASS., CIRCA 1830
All marked.

15 98 **PAIR WICK LAMPS**
ROSWELL GLEASON, DORCHESTER, MASS., CIRCA 1830
Uncommonly good type for broad wick. Marked under foot. *Height, 8 $\frac{3}{4}$ inches*

90 99 **TWO WICK LAMPS**
ROSWELL GLEASON, DORCHESTER, MASS., CIRCA 1830
One for double wick, one with double magnifier. Marked underneath. *Heights, 8 $\frac{1}{2}$ and 9 $\frac{1}{2}$ inches*

17⁵⁰ 100 **TWO TEAPOTS AND A WATER PITCHER**
ROSWELL GLEASON, DORCHESTER, MASS., CIRCA 1830
Marked underneath. Varying in shape. *Height, about 8 $\frac{3}{4}$ inches*

20-101 **FOUR**
Varyin

25- 102 **WATE**
Bulbou
p. 32.

25- 103 **TWO I**
With g

20-104 **FOUR**
One pe

37⁵⁰ 105 **THRE**
Pair o
similan

15- 106 **TWO**
Differ

17⁵⁰ 107 **WATE**
Each 1

27⁵⁰ 108 **TWO**
25-108A One w
other

17⁵⁰ 109 **TWO**
One w
touch.

ERS
NE, 1830-40
Kerfoot, fig.

20-101 **FOUR CANDLESTICKS AND TWO WICK LAMPS**
ROSWELL GLEASON, DORCHESTER, MASS., CIRCA 1830
Varying in pattern. All marked. *Heights, 4 $\frac{3}{4}$ to 9 $\frac{1}{2}$ inches*

JK LAMPS
NE, 1830-40

25-102 **WATER PITCHER**
ROSWELL GLEASON, DORCHESTER, MASS., CIRCA 1830
Bulbous pitcher marked ROSWELL GLEASON underneath. Myers,
p. 32. *Height, 12 $\frac{3}{4}$ inches*

CIRCA 1830
illustrated
14 $\frac{3}{4}$ inches

75-103 **TWO PLATES** SAMUEL GREEN, BOSTON, W. 1798-1835
With good touches. Kerfoot, fig. 114.
Diameters, 8 $\frac{1}{4}$ and 13 $\frac{1}{2}$ inches

CIRCA 1830
d a pair of
arked. Ker-

20-104 **FOUR PLATES** A. GRISWOLD, MERIDEN, CONN., 1784-1853
One perforated, one with torn rim. Kerfoot, fig. 194.
Diameters, 7 $\frac{3}{4}$, 8 $\frac{1}{4}$, 11, and 13 inches

37⁵⁰-105 **THREE MEASURES AND A SPICE BOX**
A. GRISWOLD, MERIDEN, CONN., 1784-1853
Pair of horizontally reeded small beakers, another somewhat
similar. Circular spice box with hinged lid. Kerfoot, fig. 198.

CIRCA 1830

15-106 **TWO TEAPOTS** A. GRISWOLD, MERIDEN, CONN., 1784-1853
Different in shape. Marked inside.
Heights, 6 $\frac{1}{2}$ and 7 $\frac{1}{2}$ inches

CIRCA 1830
under foot.
8 $\frac{3}{4}$ inches

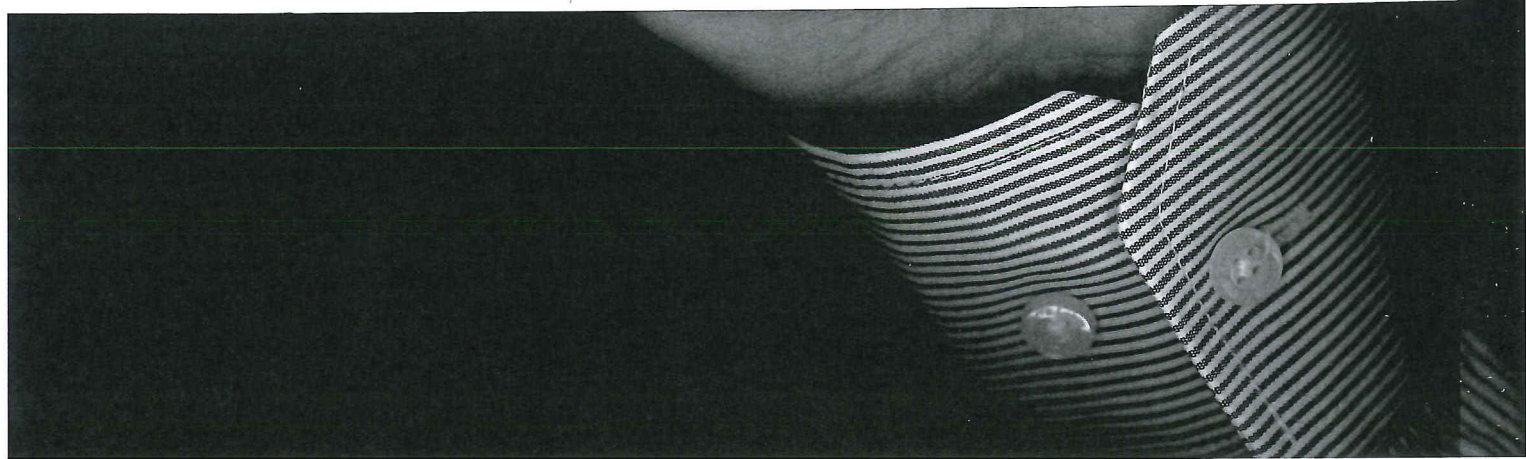
17⁵⁰-107 **WATER PITCHER AND TWO MILK PITCHERS**
HAMAN & CO., CINCINNATI, O., CIRCA 1840-50
Each piece marked on bottom. *Heights, 7 and 12 $\frac{1}{2}$ inches*

CIRCA 1830
r. Marked
9 $\frac{1}{2}$ inches

27⁵⁰-108 **TWO PORRINGERS**
SAMUEL HAMLIN, PROVIDENCE, R. I., 1774-1864
One with a rare spread eagle touch on face of handle, the
other with the profile eagle touch. Kerfoot, figs. 160 and 161.
Diameter, 5 $\frac{1}{4}$ inches

CIRCA 1830
8 $\frac{3}{4}$ inches

17⁵⁰-109 **TWO BASINS** SAMUEL HAMLIN, PROVIDENCE, R. I., 1774-1864
One with repair in centre. Two versions of this pewterer's
touch. *Diameters, 7 $\frac{3}{4}$ and 8 inches*



- 75-110 **FOUR PLATES**
 SAMUEL HAMLIN, PROVIDENCE, R. I., 1774-1864
 All with touches of this pewterer. Kerfoot, fig. 164.
Diameters, 8, 9 $\frac{1}{4}$, 13 $\frac{1}{4}$, and 15 inches
- 27⁵⁰-111 **PORRINGER** SAMUEL HAMLIN, PROVIDENCE, R. I., 1774-1864
 Eagle touch on face of handle. Good example. Kerfoot, fig. 162.
Diameter, 4 $\frac{1}{2}$ inches
- 55-112 **PLATE** C. & J. HERA, PHILADELPHIA, PA., CIRCA 1805
 Flat border and folded rim. Repair in marli. Two U. S. shield touches. Kerfoot, fig. 124. One of Kerfoot's first grade of rarities.
Diameter, 9 $\frac{1}{4}$ inches
- 37⁵⁰-113 **PORRINGER**
 GERSHOM JONES, PROVIDENCE, R. I., W. 1751-1809
 Good lion touch on face of handle. Myers, p. 12.
Diameter, 4 $\frac{1}{4}$ inches
 [SEE ILLUSTRATION FACING PAGE 18]
- 22⁵⁰-114 **PORRINGER**
 GERSHOM JONES, PROVIDENCE, R. I., W. 1751-1809
 Part of handle missing but shows good touch. Myers, p. 12.
 Rare.
Diameter, 5 inches
- 40-115 **PORRINGER**
 GERSHOM JONES, PROVIDENCE, R. I., W. 1751-1809
 Has good original surface and lion touch on face of handle.
 Myers, p. 12. Rare.
Diameter, 5 $\frac{1}{4}$ inches
- Out 116 **PLATE** GERSHOM JONES, PROVIDENCE, R. I., W. 1751-1809
 Two lion touches and 'hall marks' on back. Good state. Kerfoot, fig. 58.
Diameter, 8 $\frac{1}{4}$ inches
- 12⁵⁰-117 **PLATE** GERSHOM JONES, PROVIDENCE, R. I., W. 1751-1809
 Same touches as the preceding. Kerfoot, fig. 58.
Diameter, 8 $\frac{1}{4}$ inches

[SEE ILLUSTRATION]

1774-1864
64.
7 15 inches

1774-1864
erfoot, fig.
4 1/2 inches

CIRCA 1805
J. S. shield
t grade of
9 1/4 inches

1751-1809
4 1/4 inches

1751-1809
ers, p. 12.
r, 5 inches

1751-1809
of handle.
5 1/4 inches

1751-1809
tate. Ker-
8 1/4 inches

1751-1809
8 1/4 inches



AT LEFT, TOP TO BOTTOM : 35, 131, 119, 140, 11

AT RIGHT, TOP TO BOTTOM : 69, 49, 80, 28, 117



- 16-118 **PLATE** GERSHOM JONES, PROVIDENCE, R. I., W. 1751-1809
Shows eagle and anchor touches and 'hall marks'. Kerfoot,
figs. 56, 57, and 60. *Diameter, 8 $\frac{1}{4}$ inches*
- 17⁵⁰-119 **PLATE** GERSHOM JONES, PROVIDENCE, W. 1751-1809
In good condition and with good lion and 'hall mark' touches.
Kerfoot, fig. 58. *Diameter, 8 $\frac{1}{4}$ inches*
- [SEE ILLUSTRATION ON PRECEDING PAGE]
- 25-120 **PLATE** GERSHOM JONES, PROVIDENCE, R. I., W. 1751-1809
Three eagle, anchor, and rose touches, also 'hall marks'. Ker-
foot, figs. 56, 57, 59, and 60. *Diameter, 13 $\frac{1}{2}$ inches*
- 22⁵⁰-121 **PLATE** GERSHOM JONES, PROVIDENCE, R. I., W. 1751-1809
Two lion touches and 'hall marks'. Kerfoot, fig. 58.
Diameter, 15 inches

30-122 **LADLE AND SMALL PLATE**

40-122A RICHARD LEE, TAUNTON, MASS., CIRCA 1770
Ladle with three and one-half inch bowl, turned wood handle.
R. LEE mark inside. Five and one-quarter inch plate with two
tears on border, RICHARD LEE mark on back. One of Ker-
foot's first grade of rarities.

17⁵⁰-123 **BASIN** RICHARD LEE, TAUNTON, MASS., CIRCA 1770
With flanged rim and RICHARD LEE mark inside. Kerfoot,
fig. 64. One of Kerfoot's first grade of rarities.
Diameter, 6 inches

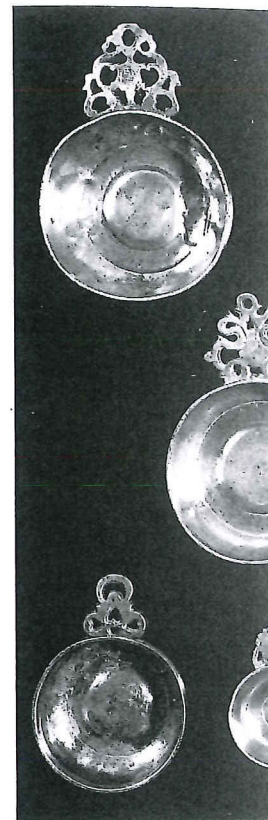
30-124 **TWO PORRINGERS**

40-124A RICHARD LEE, TAUNTON, MASS., CIRCA 1770
One has R. LEE on face of handle. The other with fleur-de-lis
mark on face of handle. One of Kerfoot's first grade of
rarities. *Diameter, 2 $\frac{1}{4}$ inches*

[SEE ILLUSTRATION]

65-125 **PORRINGER** RICHARD LEE, TAUNTON, MASS., CIRCA 1770
Stag head mark on face of handle. One of Kerfoot's first
grade of rarities. *Diameter, 2 $\frac{1}{4}$ inches*

[SEE ILLUSTRATION]



[127]

[128]

309
ot,
les
309
es.
les
309
er-
les
309
les
70
le.
wo
er-



70
ot,
les
70
lis
of
les

[127]

[125]

[136]

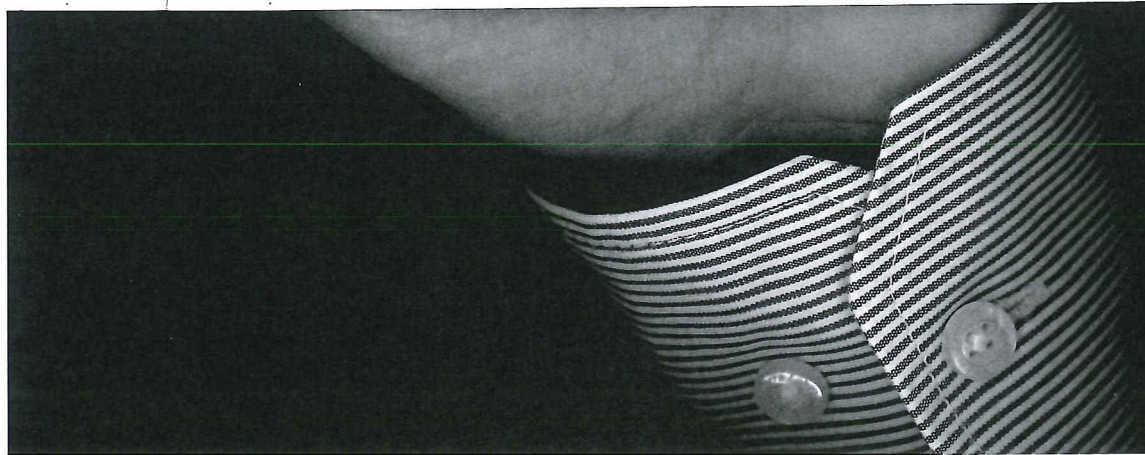
[126]

[128]

AT TOP, LEFT TO RIGHT: 31, 124, 124, 26

70
st
les

AT CENTRE, LEFT TO RIGHT: 77, 129, 113



53- 126 TWO PORRINGERS

20-126A

RICHARD LEE, TAUNTON, MASS., CIRCA 1770

One has R. L. mark on face of handle. The other unmarked, but with characteristic basin-shaped bowl. One of Kerfoot's first grade of rarities. Diameter, 2 3/4 inches

[SEE ILLUSTRATION ON PRECEDING PAGE]

32-50

127 PORRINGER

RICHARD LEE, TAUNTON, MASS., CIRCA 1770

RICHARD · LEE mark on back of handle. Kerfoot, fig. 64. One of Kerfoot's first grade of rarities. Diameter, 3 1/4 inches

[SEE ILLUSTRATION ON PRECEDING PAGE]

42-50

128 PORRINGER

RICHARD LEE, TAUNTON, MASS., CIRCA 1770

Basin-shaped bowl in good state. RICHARD · LEE mark on face of handle. Kerfoot, fig. 64. One of Kerfoot's first grade of rarities. Diameter, 3 3/4 inches

[SEE ILLUSTRATION ON PRECEDING PAGE]

135-

129 PORRINGER

RICHARD LEE, TAUNTON, MASS., CIRCA 1770

Nearly mint state. Fleur-de-lis and R. LEE marks on face of handle. Museum piece. One of Kerfoot's first grade of rarities. Diameter, 6 inches

Obtained by Mr. Bowman from the great-granddaughter of Richard Lee.

[SEE ILLUSTRATION ON PRECEDING PAGE]

17-50

130 BOWL

RICHARD LEE, TAUNTON, MASS., CIRCA 1770

Well executed repair in bottom. RICHARD · LEE mark inside. Kerfoot, fig. 64. One of Kerfoot's first grade of rarities. Diameter, 7 3/4 inches

Diameter, 7 3/4 inches

27-50

131 PLATE

RICHARD LEE, TAUNTON, MASS., CIRCA 1770

Cleaned piece with RICHARD · LEE mark on back. Kerfoot, fig. 64. One of Kerfoot's first grade of rarities. Diameter, 8 inches

Diameter, 8 inches

[SEE ILLUSTRATION OPPOSITE PAGE 16]

132 THREE

15-

Slightly Church,

35- 133 TWO PI

With go

25-134 BASIN

'In God

20- 135 THREE

Two wit 'hall ma:

45-136 PORRIN

With su fig. 82.

35 137 PORRIN

Identical different

25 138 TWO PI

Showing foot, fig.

A 1770
arked,
rfoot's
inches

15- 132 **THREE COMMUNION CHALICES**
LEONARD, REED & BARTON, TAUNTON, MASS., 1835-45
Slightly different in shape; one unmarked. From Christ
Church, High Street, Skowhegan, Maine.
Heights, 6 and 7 inches

A 1770
. One
inches

35- 133 **TWO PLATES**
GEORGE LIGHTNER, BALTIMORE, MD., C. 1790-1812
With good eagle touches. Kerfoot, fig. 142-3.
Diameters, 7³/₄ and 8³/₄ inches

A 1770
n face
de of
inches

25- 134 **BASIN** D. MELVILLE, NEWPORT, R. I., 1755-1793
'In God We Hope' mark in centre. Good state. Kerfoot, fig. 84.
Diameter, 8 inches

A 1770
ace of
' rari-
inches
ber of

20- 135 **THREE PLATES** DAVID MELVILLE, NEWPORT, R. I., 1755-1793
Two with the NEWPORT touch; another, larger, with different
'hall marks'. Kerfoot, figs. 84 and 85.
Diameters, 8 and 14 inches

1770
nside.
nches

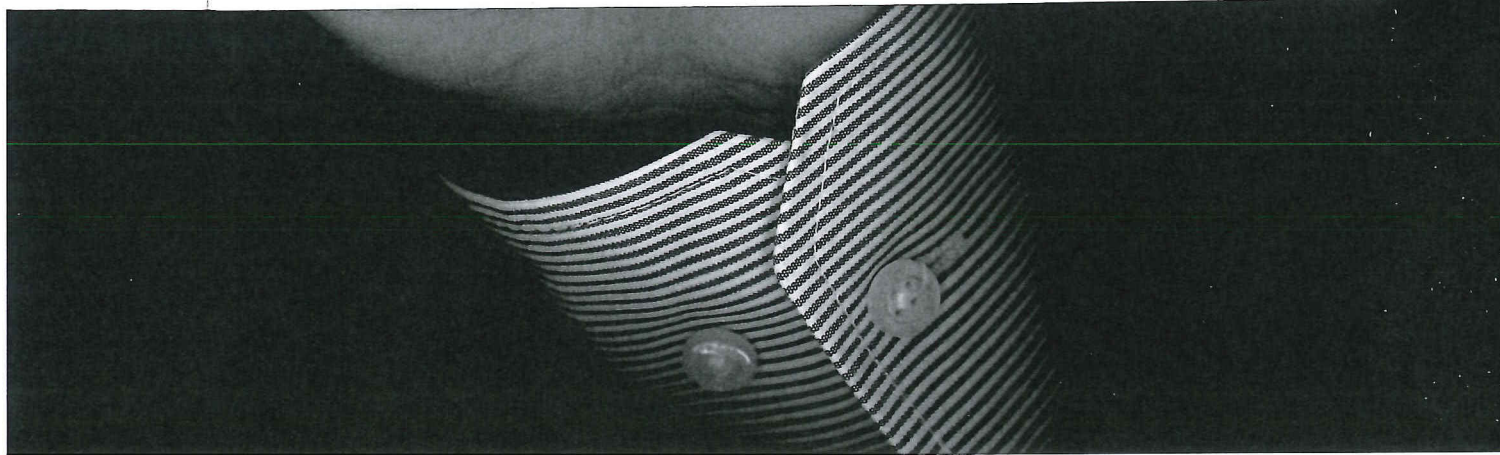
45- 136 **PORRINGER** DAVID MELVILLE, NEWPORT, R. I., 1755-1793
With sunburst and star mark on face of handle. Kerfoot,
fig. 82. *Diameter, 5 inches*

[SEE ILLUSTRATION OPPOSITE PAGE 18]

1770
t, fig.
nches

35- 137 **PORRINGER** THOMAS MELVILLE, NEWPORT, R. I., W. 1795
Identical with porringer illustrated in Kerfoot, p. 33, but with
different mark on face of handle. Rim torn.
Diameter, 5 inches

25- 138 **TWO PLATES**
SAMUEL PIERCE, MIDDLETOWN, CONN., CIRCA 1820-30
Showing maker's eagle and initial touches. Good state. Ker-
foot, fig. 101. Myers, p. 62. *Diameter, 8 inches*



22⁵⁰ 139 **BOWL** SAMUEL PIERCE, MIDDLETOWN, CONN., CIRCA 1820-30
Good state. Partly rubbed touch at centre. *Diameter, 8 inches*

25- 140 **PLATE** SAMUEL PIERCE, MIDDLETOWN, CONN., CIRCA 1820-30
Two touches on back. Kerfoot, fig. 101. *Diameter, 11¼ inches*
[SEE ILLUSTRATION OPPOSITE PAGE 16]

20- 141 **PLATE** SAMUEL PIERCE, MIDDLETOWN, CONN., CIRCA 1820-30
s. p. touch on back. Also partly rubbed eagle touch. Kerfoot,
fig. 101. *Diameter, 13¼ inches*

12⁵⁰ 142 **WICK LAMP AND TEAPOT**
A. PORTER, SOUTHTON, CONN., 1830-40
Both marked. Teapot of early design.
Heights, 7 and 8½ inches

25- 143 **WATER PITCHER, TWO CANDLESTICKS
AND TWO WICK LAMPS**
F. PORTER, WESTBROOK, CONN., 1825-40
All marked. Kerfoot, fig. 385.

20- 144 **TEAPOT, MILK JUG, AND THREE WICK LAMPS**
(?) PUTNAM, 1825-40
Uncommonly small wick lamps. All marked. Locality not re-
corded in Kerfoot.

15- 145 **TEACUP, CRUET, AND PORRINGER**
REED & BARTON, TAUNTON, MASS., 1845-55
All marked. Cruet unusually large.
Heights, 6½ to 16 inches

17⁵⁰ 146 **WATER PITCHER** REED & BARTON, TAUNTON, MASS., 1845-55
Bulbous body and hinged dome lid. Called by Kerfoot the
finest type evolved by the 'coffee pot era'. *Height, 13 inches*

50- 147 **HURRI**
Well-me
ney. Ra

10- 148 **TWO W**
Each pi

12⁵⁰ 149 **WATER**
With tv
fig. 307.

30- 150 **TWO W**
Covered
without

37⁵⁰ 151 **COVER**
Identical
with id

83- 152 **COFFE**
Coffee
marked

15- 153 **WATER**
Wick l
fig. 316

A 1820-30
; 8 inches

50- 147 HURRICANE LAMP

REED & BARTON, TAUNTON, MASS., 1845-55
Well-made piece of good design with snuffer and glass chimney. Rare. *Height, 15 inches*

A 1820-30
1/4 inches

10- 148 TWO WICK LAMPS, AND A PITCHER

REED & BARTON, TAUNTON, MASS., 1845-55
Each piece marked. Pitcher of uncommon shape.

A 1820-30
Kerfoot,
1/4 inches

125- 149 WATER PITCHER AND TEAPOT

G. RICHARDSON, CRANSTON, R. I., 1820-30
With two versions of the G. RICHARDSON only mark. Kerfoot, fig. 307. *Heights, 7 and 7 1/2 inches*

., 1830-40

30-150 TWO WATER PITCHERS

G. RICHARDSON, CRANSTON, R. I., 1820-30
Covered pitcher with Kerfoot's frontispiece marks; pitcher, without cover, with another version of the marks. *Heights, 8 and 9 inches*

1/2 inches

., 1825-40

57- 151 COVERED SUGAR BOWL

G. RICHARDSON, CRANSTON, R. I., 1820-30
Identical with frontispiece of Kerfoot's *American Pewter* and with identical marks. *Diameter, 5 inches*

'S
t, 1825-40
ty not re-

80- 152 COFFEE POT, TEAPOT, AND SUGAR BOWL

G. RICHARDSON, CRANSTON, R. I., 1820-30
Coffee pot and teapot marked G. RICHARDSON; sugar bowl marked G. RICHARDSON WARRANTED, CRANSTON, R. I. NO. 3. *Heights, 5 to 11 inches*

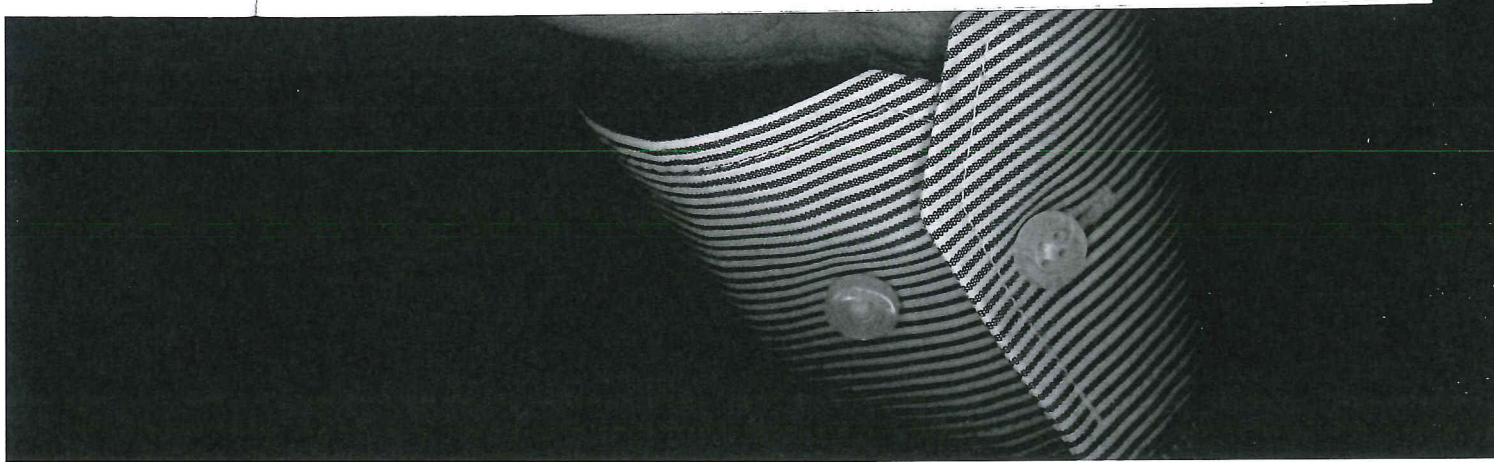
., 1845-55

16 inches

15- 153 WATER PITCHER AND WICK LAMP

SELLEW & CO., CINCINNATI, OHIO, 1830-40
Wick lamp of good design; large water pitcher. Kerfoot, fig. 316b.

., 1845-55
rfoot the
13 inches



- ¹⁷⁵⁰ 154 **COMMUNION FLAGON**
 SHELDON & FELTMAN, ALBANY, N. Y., CIRCA 1825-35
 Molded horizontal double rib at centre. Wide flaring foot.
Height, 10½ inches
- ¹⁷⁵⁰ 155 **THREE PLATES** JOHN SKINNER, BOSTON, MASS., 1733-1813
³²⁵⁰ ~~1534~~ All marked; the last perforated. Myers, p. 65.
Diameters, 7⅝, 9¼, and 12 inches
- ¹⁰⁻ 156 **TWO TEAPOTS** E. SMITH, BEVERLY, MASS., 1825-35
 Different in shape. Both marked on bottom.
Height, about 7 inches
- ¹²⁵⁰ 157 **TWO WICK LAMPS, A CANDLESTICK
 AND TWO CRUETS** E. SMITH, BEVERLY, MASS., 1825-1835
 All marked. *Heights, 7 to 9 inches*
- ¹⁰⁻ 158 **TEAPOT AND COFFEE POT**
 SMITH & CO., CONN. (?), 1825-35
 Different in shape. Both marked on bottom.
Heights, 6½ and 8 inches
- ²²⁵⁰ 159 **PAIR WICK LAMPS, CANDLESTICK, AND A MUG**
 SMITH & CO., CONN. (?), 1825-35
 Pair of acorn-shaped double-wick lamps of good design. All
 marked.
- ¹²⁵⁰ 160 **THREE WICK LAMPS** SMITH & CO., CONN. (?), 1825-1835
 Different in shape. Marked under foot.
Heights, 7½ and 8½ inches

- ³⁵ 161 **PLATE**
 Good pl
- ³²⁵⁰ 162 **FOUR**
 Pair of
 lamps.
- ²²⁵⁰ 163 **COFFE**
 Fluted
- ¹⁷⁵⁰ 164 **TWO (**
 Similar
- ¹⁰⁻ 165 **TWO (**
 All ma
- ¹⁰⁻ 166 **COFFI**
 Differ
- ³⁵⁻ 167 **THRE**
 Small
- ⁵⁰⁻ 168 **THRE**
 Two a

RCA 1825-35
ing foot.
10½ inches

~~35~~ 161 **PLATE** S. STAFFORD, ALBANY, N. Y., 1770-1844
Good plate with good marks. Kerfoot, fig. 160.
Diameter, 13½ inches

s., 1733-1813
nd 12 inches

~~32~~⁵⁰ 162 **FOUR CANDLESTICKS AND TWO WICK LAMPS**
TAUNTON BRITANNIA MFG. CO., TAUNTON, MASS., 1830-40
Pair of candlesticks of good design; smaller pair; two hand
lamps.

ss., 1825-35
out 7 inches

~~22~~⁵⁰ 163 **COFFEE URN**
TAUNTON BRITANNIA MFG. CO., TAUNTON, MASS., 1830-40
Fluted baluster shape with loose lid. *Height, 13½ inches*

., 1825-1835
7 to 9 inches

~~17~~⁵⁰ 164 **TWO COFFEE URNS**
TAUNTON BRITANNIA MFG. CO., TAUNTON, MASS., 1830-40
Similar in shape excepting the foot, which varies.
Height, 12 inches

(?), 1825-35
nd 8 inches

10-165 **TWO CRUETS AND A WICK LAMP**
I. TRASK, BEVERLY, MASS., 1786-1867
All marked. *Height, 9½ inches*

MUG
(?), 1825-35
design. All

10-166 **COFFEE POT AND TEAPOT**
I. TRASK, BEVERLY, MASS., 1786-1867
Different in shape. Both marked on bottom.

), 1825-1835
l 8½ inches

~~35~~ 167 **THREE BEAKERS AND A SANDER**
I. TRASK, BEVERLY, MASS., 1786-1867
Small reeded beaker or measure, and a rare sand pot.
Heights, 2½ and 3¼ inches

~~50~~ 168 **THREE BEAKERS** O. TRASK, BEVERLY, MASS., CIRCA 1820-30
Two almost a pair, one somewhat similar. Marked inside.
Height, 5¼ inches

275-

169 COMMUNION SET AND BAPTISMAL BOWL

OLIVER TRASK, BEVERLY, MASS., 1825-35

Tall flagon, two chalices, a ten and one-half inch deep plate, and large footed bowl or font. Marked O. TRASK; chalices unmarked.

From the church in Greenville, Maine.

[SEE ILLUSTRATION]

30-

170 BASIN, CANDLESTICK, TWO MUGS, AND A LADLE

J. WEEKS, NEW YORK, N. Y. (?), 1825-35

All marked. Kerfoot, fig. 328.

20-

171 THREE PLATES

JACOB WHITMORE, MIDDLETOWN, CONN., CIRCA 1790

One imperfect. Myers, p. 67. *Diameters, 8 and 12 inches*

35-

172 PLATE

HENRY WILL, NEW YORK, N. Y., C. 1736-1802

Good condition with rose and 'hall mark' touches. Myers, p. 68. One of Kerfoot's first grade of rarities.

Diameter, 8 7/8 inches

240-

173 FLAT-TOPPED TANKARD

HENRY WILL, NEW YORK, N. Y., C. 1736-1802

Nearly cylindrical; with hinged flap cover, pierced thumb-piece, and S-scroll handle. Marked inside on bottom. Myers, p. 70. One of Kerfoot's first grade of rarities.

Height, 7 1/4 inches

[SEE ILLUSTRATION ON PAGE 4]

10-

174 TWO TEAPOTS

H. YALE, WALLINGFORD, CONN., 1825-40

Different in shape. Both marked inside.

Heights, 7 and 8 inches

275

175 TWO WICK LAMPS AND TWO BEAKERS

YALE AND CURTIS, NEW YORK, N. Y., CIRCA 1860

Double burner lamp of good design, another of simple form, and two small beakers.



[176]

325-35
plate,
as un-

E
325-35

1790
inches

3-1802
Myers,
inches

3-1802
numb-
Myers,
inches

325-40
inches

1860
form,

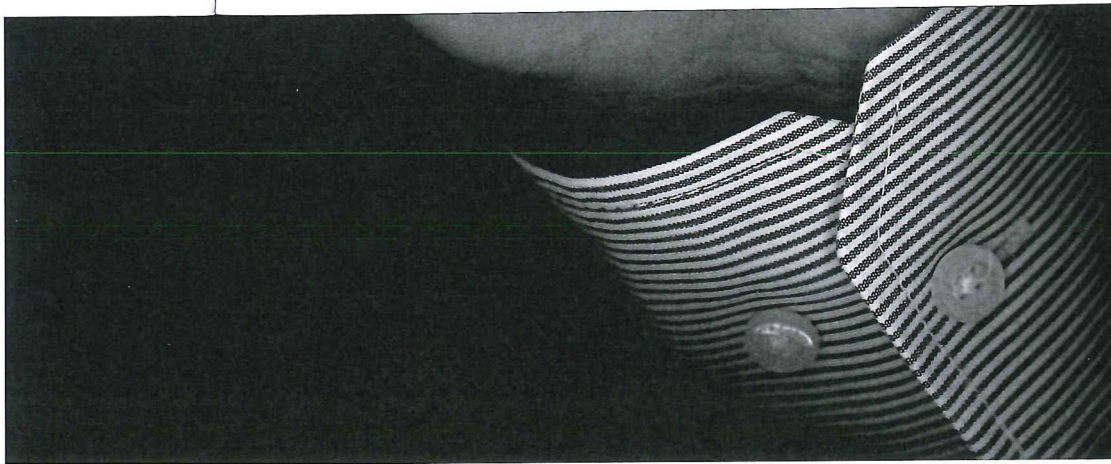


[176]

[169]

[176]

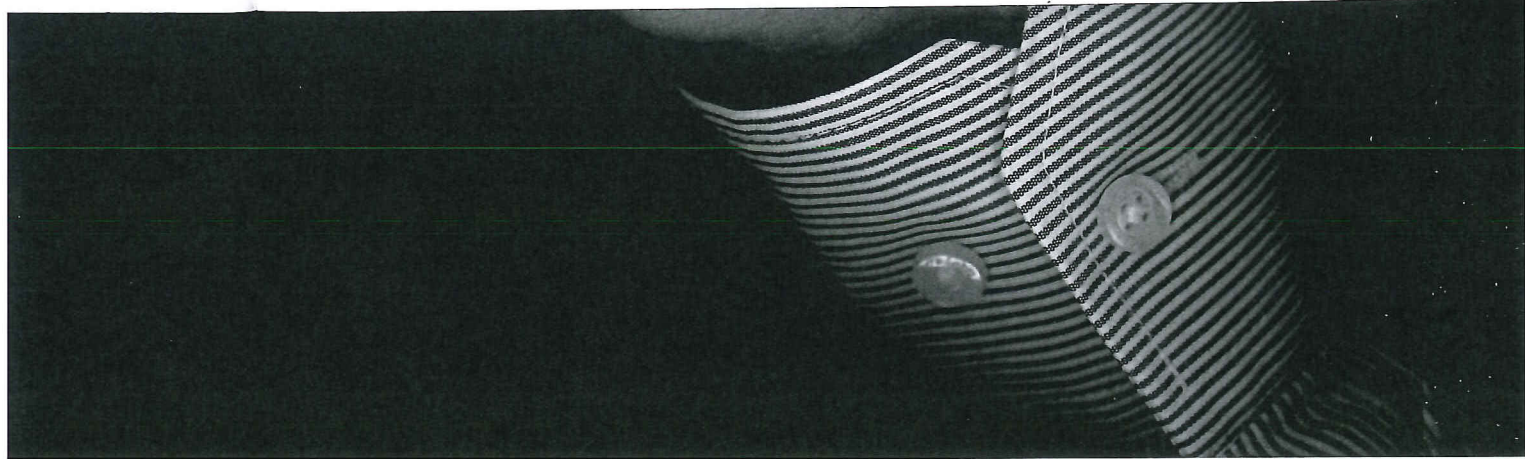
AT TOP: NUMBER 169



- 160 176 PAIR COMMUNION CHALICES
 PETER YOUNG, ALBANY, N. Y., 1748-1814
 Tapered bowl on fine turned socle and domed foot. P. Y. mark under foot. Rare. *Height, 8½ inches*
 [SEE ILLUSTRATION ON PRECEDING PAGE]
- 22⁵⁰ 177 TWO PLATES AMERICAN, CIRCA 1820
 One by William Danforth, Middletown, Conn.; the other by R. Palethorp, Jr., Philadelphia, Pa. Kerfoot, figs. 120 and 154. *Diameter, 8 inches*
- 10- 178 TWO TEAPOTS AMERICAN, 1830-45
 One by L. L. Williams of Philadelphia; the other by Taunton Britannia Mfg. Co. *Heights, 7½ and 8 inches*
- 12⁵⁰ 179 COFFEE POT, TEAPOT AND SYRUP JUG
 AMERICAN, 1830-50
 A shaped coffee pot by Reed and Barton, Taunton, Mass.; a teapot by Morey and Smith, Boston; and a syrup jug by Homan & Co., Cincinnati. *Heights, 8, 9, and 10½ inches*
- 85- 180 THREE QUART TANKARDS AMERICAN, CIRCA 1810-1830
 One by Samuel Danforth of Hartford, Conn., one by Samuel Hamlin of Providence, and one by Thomas Danforth 3rd, of Philadelphia. Myers, p. 33, and Kerfoot, fig. 164.
- 15- 181 TWO COFFEE POTS AMERICAN, 1825-45
 One by I. Trask of Beverly, Mass.; the other by H. Yale, Wallingford, Conn.
- 162⁵⁰ 182 TWO TEAPOTS AND A COFFEE POT AMERICAN, 1825-1845
 By William McCullen, Boardman & Hall, and I. C. Lewis. *Heights, 8½ to 10½ inches*
- 25- 183 THREE PLATES AMERICAN, CIRCA 1800-1820
 Two by Thomas Badger, Boston, Mass., and a plate with "Semper Eadem" touch; the latter repaired. Kerfoot, figs. 92, 95, and 96. Myers, p. 3. *Diameters, 7¾, 8½, and 13½ inches*

- 10- 184 TWC
 One
 Mass
- 75 185 SEV
 40 185A By
 B. &
 mon
- 10 186 TWC
 One
 Rich
- 12⁵⁰ 187 TWC
 One
 son,
- 10 188 TEA
 Tea
- 20 189 THL
 Var
 ano
- 45 190 FIV
 35 190A Pin
 R.
 by
- 12⁵⁰ 191 TW
 On
 Cal
 Ha
 Gr
- 27⁵⁰ 192 FT
 Va

- 18-1814
mark
inches
- 10- 184 **TWO TEAPOTS** AMERICAN, 1825-40
One by Smith and Morey; the other by E. Smith of Beverly,
Mass. *Heights, 7 and 7½ inches*
- 75
40 185A 185 **SEVEN PLATES** AMERICAN, 1800-1840
By James Porter of Baltimore, G. Richardson of Boston,
B. & J. Harbison, W. & S. Yale of Meriden, Conn., J. D. Rich-
mond, and Reed & Barton. *Diameters, 7¾ to 10 inches*
- 10 186 **TWO COFFEE POTS** AMERICAN, 1820-30
One by G. Richardson, Cranston, R. I.; the other by George
Richardson, Boston. *Height, 11½ inches*
- 125 187 **TWO COFFEE POTS** AMERICAN, 1825-40
One by F. Porter of Westbrook, Conn.; the other by J. Mun-
son, Boston (?). *Height, about 10½ inches*
- 10 188 **TEAPOT AND COFFEE POT** AMERICAN, 1825-40
Teapot by Charles Yale, New York; coffee pot by S. Simpson.
Heights, 10 and 8½ inches
- 20 189 **THREE COFFEE POTS** AMERICAN, 1830-50
Varying in shape; one by Sheldon and Feltman of Albany,
another by H. B. Ward, and another marked G. S. & Co.
Heights, 9 and 10 inches
- 45
35 190A 190 **FIVE MUGS** AMERICAN, 1810-30
Pint mug by Thomas Danforth, one by Robert Boyle, one by
R. Palethorp, and one by Morey and Over; and a small mug
by J. D. Woodbury.
- 125 191 **TWO COFFEE POTS** AMERICAN, CIRCA 1830-40
One by Charles Yale of New York; the other by William
Calder of Providence, R. I., and engraved with the initials of
Hannah Hagadorn Wells, who married the Rev. Charles
Grosvenor, April 8, 1838. *Height, about 11½ inches*
- 275 192 **FIVE TEA AND COFFEE POTS** AMERICAN, 1825-1850
Various makers. All marked. *Heights, 7¼ to 9½ inches*



20 193 **TWO BASINS** AMERICAN, 1810-1830
One by W. & S. Yale of Meriden, Conn.; the other, with un-
identified eagle touch, was used in the Baptist Church at
Starks, Maine. Myers, p. 74, and Kerfoot, fig. 173.
Diameters, 7 $\frac{3}{4}$ and 8 inches

125 194 **TWO COFFEE POTS** AMERICAN, 1830-50
One octagonal by Reed and Barton, Taunton, Mass.; the other
by R. Gleason, Dorchester, Mass. *Heights, 11 and 13 inches*

275 195 **MOLASSES 'GATE' AND TWO INKPOTS**
G. & J. FENN, NEW YORK, N. Y., 1830-1840
125 195A
All heavy pieces. All marked.

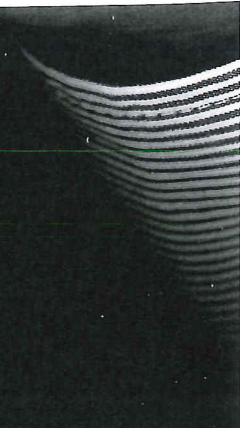
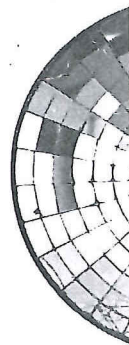
20 196 **THREE TEAPOTS** AMERICAN, 1820-1840
One pear-shaped, probably by Samuel Pierce; another sim-
ilar, by Hale of New York; the third probably by E. Capen.
Height, about 7 $\frac{1}{2}$ inches

175 197 **CUSPIDOR, CANDLESTICK, AND WICK LAMP**
H. HOPPER, NEW YORK, N. Y., 1840-1850
All marked.

110 198 **SIX PEWTER-FRAMED PORTRAIT SILHOUETTES OF
THE PARK FAMILY OF FAYETTEVILLE, VERMONT**
AMERICAN, 1820-1850
The name of each subject is inscribed on the back, together
with *Fayetteville* and the date. Mounted in a circular narrow
frame of pewter. Exceedingly rare. *Diameter, 3 $\frac{1}{4}$ inches*
Fayetteville, now Newfane, Vermont, was started about 1768
when Jonathan Park built the first frame house. In 1825 the
Park family donated land for a town common. The towns-
people offered in turn to name the town Parksville, but the
donor objected, and at the suggestion of General Field the
town was named Fayetteville in honor of General Lafayette,
who had visited America the previous year. The change from
Fayetteville to Newfane is as yet unexplained.

[SEE FRONTISPIECE]

65 199 **TWO I**
Forme
form c
socket
Very r



10-1830
with un-
arch at

inches

1830-50
the other
inches

1830-1840

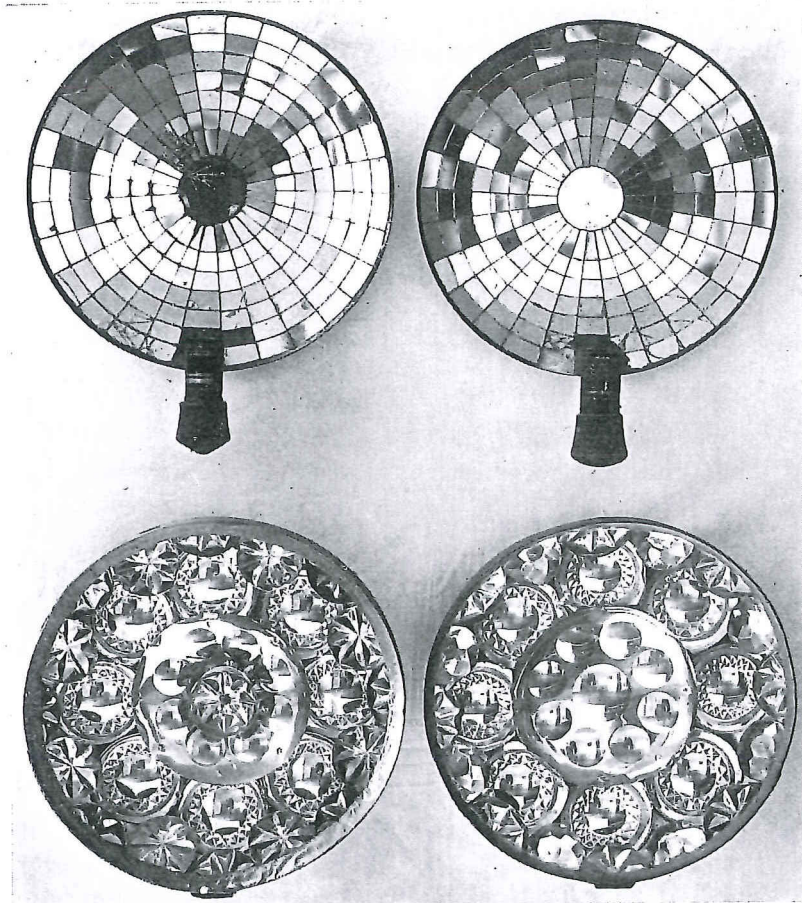
1830-1840
the sim-
Capen.
inches

1830-1850

OF
ANT

1830-1850
together
narrow
inches

at 1768
1825 the
towns-
out the
cayette,
e from



[NUMBER 200]

[NUMBER 201]

AT TOP: NUMBER 199

65 199 TWO REFLECTOR SCONCES

AMERICAN, EARLY XIX CENTURY

Formed of small segments of mirror glass arranged in the form of a sunburst on a backing of tin or pewter; in front a socket for a candle. Piece of glass missing from one sconce. Very rare.

Diameter, 9½ inches

[SEE ILLUSTRATION]

- 45- 200 **REFLECTOR SCONCE** AMERICAN, EARLY XIX CENTURY
Circular sconce composed of a number of pieces of polished thin pewter arranged in rosette form and mounted under glass. Very rare. *Diameter, 9½ inches*
[SEE ILLUSTRATION ON PRECEDING PAGE] 12⁵⁰ 209
- 40- 201 **REFLECTOR SCONCE** AMERICAN, EARLY XIX CENTURY
Somewhat similar to the preceding. Very rare. *Diameter, 9½ inches*
[SEE ILLUSTRATION] 17⁵⁰ 210
- 25- 202 **REFLECTOR SCONCE** AMERICAN, EARLY XIX CENTURY
Simpler version of the preceding. Very rare. *Diameter, 9¼ inches* 12⁵⁰ 211
- 50- 203 **REFLECTOR SCONCE** AMERICAN, EARLY XIX CENTURY
Unusual arched-shape composed of round pieces of polished pewter in design of cabochons. In front a tray to hold two candles. Rare. *Height, 10¾ inches* 10 213
- 22⁵⁰ 204 **TWO REFLECTOR SCONCES** AMERICAN, EARLY XIX CENTURY
Composed of segments of mirror glass mounted on backing of tin or pewter; one imperfect. *Diameters, 8½ and 9 inches* 15 214
- 12⁵⁰ 205 **TWO COFFEE POTS** AMERICAN, 1825-40
One by Oliver Trask, Beverly, Mass.; the other by E. Smith, Beverly, Mass. *Height, about 11 inches* 22⁵⁰ 215
- 12⁵⁰ 206 **TWO COFFEE POTS** AMERICAN, 1830-40
One by A. Porter, Southington, Conn.; the other marked PUTMAN. Similar in shape. *Height, about 11½ inches* 20-216
- 15 207 **THREE WICK LAMPS** AMERICAN, 1820-1840
One by Morey and Over, one marked *Brook Farm*, and the third by Ostrander & Morris. *Heights, 5½ to 8 inches* 302/18
- 20 208 **THREE BED WARMERS** AMERICAN, CIRCA 1810-30
One by S. Stafford of Albany, N. Y., another by Boardman & Co., New York, N. Y.; another by Thomas D. Boardman, Hartford, Conn. All well marked. Myers, p. 90; Kerfoot, figs. 216 and 157. *Diameters, 10½ to 12 inches* 30-217
- 32⁵⁰ 218

X CENTURY
of polished
ated under
9½ inches

12⁵⁰ 209

THREE TEAPOTS

AMERICAN, 1825-1845

By Whitlock of Troy, N. Y., Gage & Beebe, and W. Humiston
of Troy. *Height, about 7½ inches*

X CENTURY

17⁵⁰ 210

FIVE SMALL WICK LAMPS

AMERICAN, 1820-1840

Two ship's cabin lamps and three others. Various makers.
Heights, 2½ to 5 inches

9½ inches

12⁵⁰ 211

TWO COFFEE POTS

AMERICAN, 1830-40

One by J. B. Woodbury of Philadelphia; the other by R.
Gleason, Dorchester, Mass. *Height, 11½ inches*

X CENTURY

12⁵⁰ 212

POCKET FLASK, SNUFFBOX, AND MINIATURE

AMERICAN, XIX CENTURY

Flask by G. & J. W. Hawkesley; oblong snuffbox probably by
G. Gerhardt; lithographs of President Zachary Taylor and
Vice-president Millard Fillmore in pewter frame.

9¼ inches

X CENTURY
of polished
o hold two
.0¾ inches

10 213

COFFEE POT AND TWO TEAPOTS

AMERICAN, 1825-1850

By T. S. Derby, J. B. Grave, and Crossman, West & Leonard.
All marked. *Heights, 8½ and 11½ inches*

X CENTURY
backing of
nd 9 inches

15 214

TWO COFFEE POTS

AMERICAN, 1825-45

One by A. Griswold, Waterbury, Conn.; the other by S. Simp-
son, New York, N. Y. *Height, 12 inches*

AN, 1825-40
E. Smith,
t 11 inches

22⁵⁰ 215

TWENTY-NINE SPOONS AND TWO LADLES

AMERICAN, XIX CENTURY

Different sizes and makers.

AN, 1830-40
er marked
11½ inches

20-216

MISCELLANEOUS PIECES

AMERICAN, XIX CENTURY

Four candlesticks, two milk jugs, a creamer, a cruet, and a
shaving mug. Various makers.

1820-1840
n, and the
to 8 inches

30-216A

30-217

THREE PORRINGERS

Unidentified pieces. Back of rococo handles initialed as fol-
lows: *I. G.*, *R. G.*, and *W. M.* *Diameter, 4½ inches*

DA 1810-30
ardman &
Boardman,
; Kerfoot,
o 12 inches

32⁵⁰ 218

THREE PORRINGERS

Unidentified pieces. Handles initialed as follows: *R.*, *E. C.*,
and *S. G.* *Diameters, 3¼, 3½, and 5¼ inches*

1st Session # 7556-