

GDB

6/89

CATALOGUE  
OF  
**TREEN**  
**GOOD PEWTER**

INCLUDING

A FINE GARNISH OF ARMORIAL PEWTER  
A RARE ENGLISH BALUSTER-SHAPED WINE MEASURE, *circa* 1600  
AN OCTAGONAL-BASED STUART CANDLESTICK  
A WILLIAM AND MARY TANKARD AND THREE GERMAN GUILD FLAGS,  
*of 17th Century date*

**CLOCKS**

INCLUDING

A GOOD QUARTER-STRIKING BRASS ALARUM CARRIAGE CLOCK,  
*by Le Roy and Fils, Paris*  
A GEORGE II EBONY-VENEERED BRACKET CLOCK, *by Humphrey Sellon*

**ENGLISH AND CONTINENTAL FURNITURE**

INCLUDING

A GEORGE III MAHOGANY BREAKFAST TABLE  
A SET OF NINE GEORGE II MAHOGANY DINING CHAIRS  
A SET OF EIGHT WILLIAM IV MAHOGANY DINING CHAIRS  
AN ITALIAN PIETRA DURA AND EBONY CABINET ON STAND

INCLUDING

*The Property of Miss C. J. M. DAVIS*

WHICH WILL BE SOLD BY AUCTION

BY MESSRS.

**SOTHEBY & CO.**

WILSON A. R. A. HOBSON A. J. B. KIDDELL T. H. CLARKE C. GRONAU R. J. RICKETT  
H. POLLEN G. D. LLEWELLYN R. P. T. CAME M. J. WEBB LORD JOHN KERR  
OF WESTMORLAND J. L. MARION (U.S.A.) H. M. ROBINOW P. M. R. POUNCEY J. M. LINELL  
B. DAY H. J. RICKETTS M. J. STRAUSS D. J. NASH T. E. NORTON (U.S.A.)  
BELES P. D. THOMSON D. ELLIS-JONES R. J. DE LA M. THOMPSON D. E. JOHNS  
LANDRIGAN III (U.S.A.) A. J. STAIR (U.S.A.) M. D. RITCHIE A. M. KAGAN (U.S.A.)  
A. HOLLOWAY D. J. CROWTHER SIR PHILIP HAY, K.C.V.O., T.D.

*Associates:*

JOHN CARTER, C.B.E. N. MACLAREN H. A. FEISENBERGER J. F. HAYWARD  
P. J. CROFT A. MAYOR

AFFILIATED COMPANY: PARKE-BERNET GALLERIES INC., NEW YORK  
NEW YORK REPRESENTATIVE SOTHEBY'S OF LONDON LTD. PRESIDENT: P. M. H. POLLEN

**Auctioneers of Literary Property and Works illustrative of the Fine Arts**  
AT THEIR LARGE GALLERIES 34 & 35 NEW BOND STREET, W.1.  
*Telephone: 01-493 8080*

**Day of Sale:**

**Friday, 28th November, 1969**

AT TEN-THIRTY A.M. PRECISELY

On View at least two days previously (not Saturdays)

Catalogue Price 5/- (25p)

A Printed List of all Prices and Buyers' Names at this sale can be supplied  
for 3/- (15p), and for all sales at low subscription rates

	\$	Lot	
)	240		
)	96		
)	120	Total	£33,
5	156		
)	144		
5	228		
)	600		
)	72		
)	288		
)	360		
)	600		
)	216		
)	144		
)	120		
5	132		
)	528		
)	288		
)	168		
)	648		
)	576		
)	576		
)	1176		
)	288		
)	144		
)	728		
0	240		
0	528		
0	768		
0	458		
5	60		
0	504		
0	264		
5	300		
0	408		
5	108		
0	408		
5	228		
5	228		
0	864		
0	72		
5	204		
0	408		
0	912		
0	168		
0	168		
0	168		
0	2520		



CATALOGUE  
OF  
ENGLISH AND CONTINENTAL FURNITURE  
GOOD PEWTER, TREEN  
AND  
CLOCKS

Day of Sale:

Friday, 28th November, 1969

AT TEN-THIRTY A.M. PRECISELY

ENGLISH PEWTER

Various Properties

1 A tulip-shaped Tankard of 1-quart capacity with double-scrolled handle,  $6\frac{1}{4}$ in. high, circa 1830; two 1-quart Tankards of tapering form standing on incurved foot and with rectangular handles,  $6\frac{1}{2}$ in.; a pair of 1-pint Tankards of similar type, 5in.; and two others of similar general outline by *Loftus*, mostly mid-19th Century; three 1-pint Tankards with slightly tapering cylindrical drums on moulded foot,  $4\frac{1}{2}$ in., circa 1830; a bulbous lidless Tavern Measure of  $\frac{1}{2}$ -pint capacity; and a pair of late plain-rimmed Plates, 9in. diam. (12)

2 A set of four Plates by *John Duncomb(e)*, (Cott. No. 1045), the plain rims with owner's initials WN,  $9\frac{1}{2}$ in. diam., circa 1750; a set of three similar Plates by *Samuel Duncomb(e)*, (Cott. No. 1046) with owner's initials on reverse,  $9\frac{1}{4}$ in. diam., circa 1760; a Dish with single-reeded rim by *John de St. Croix*, (Cott. No. 1360), 15in. diam., circa 1740; a quart Tavern Mug by *James Yates*; and a footed Cup of 1-pint capacity, both 19th Century (10)

3 A circular Dish with single-reeded rim and maker's mark on reverse, 17in. diam.; a William IV tulip-shaped Tankard of 1-quart capacity with double-scrolled handle; a cylindrical 1-pint Tankard, both circa 1830; four bulbous lidless Tavern Measures of  $\frac{1}{2}$ -pint and 1-gill capacities, dating from 1820; and four other items (11)

4 A circular plain-rimmed Plate by John Dolbeare (Cott. No. 1408); a similar Plate by John Watts (Cott. No. 4991), both  $9\frac{1}{4}$ in. diam.; another Plate by Edmund Harvey (Cott. No. 2185),  $8\frac{3}{4}$ in. diam., and another by Thomas Swanson (Cott. No. 4593), 9in. diam., all circa mid-18th Century (4)

5 A set of three plain-rimmed Plates by John Home (Cott. No. 2393),  $9\frac{1}{2}$ in. diam., circa 1750; and another set of three Plates of similar type by Nicholas Jackman (Cott. No. 2552),  $9\frac{1}{4}$ in. diam., circa 1730, all six plates bearing owner's initials ILA on reverse (6)

6 A series of four bulbous lidless Tavern Measures, from 1-quart to 1-gill capacity, dating from 1840; an Edinburgh Measure of 1-gill capacity with dished lid,  $3\frac{3}{4}$ in.; and a Glasgow Measure with single-domed cover,  $4\frac{1}{4}$ in., both early 19th Century (6)

7 Four plain-rimmed Plates by Samuel Duncomb(e) (Cott. No. 1046),  $9\frac{1}{4}$ in. diam., circa 1750; an English plain-rimmed Dish, with touchmark on reverse,  $13\frac{1}{4}$ in. diam., circa 1750; a late 1-quart Tankard with spout, circa 1860; and a  $\frac{1}{2}$ -pint Tankard, circa 1820 (7)

8 A pair of plain-rimmed Plates by Yates, Birch & Spooner (Cott. No. 5349), the rims engraved with date 1845,  $9\frac{1}{4}$ in. diam., circa 1800; another pair of Plates by Samuel Smith (Cott. No. 4379),  $8\frac{3}{4}$ in. diam., circa 1760; three English Plates of a similar type,  $8\frac{3}{4}$ in. to  $9\frac{1}{2}$ in. diam., circa 1760-80; and another Plate with single-reeded rim, circa 1750 (8)

9 A plain-rimmed Dish with touch (as Cott. No. 6049) on reverse,  $16\frac{1}{2}$ in. diam.; a smaller Dish of similar type, unmarked,  $14\frac{3}{4}$ in. diam.; another  $13\frac{1}{2}$ in. diam., all circa 1760; a Dish with single-reeded rim by Timothy Cloudesley (Cott. No. 992), 15in. diam., circa 1730; another of similar type,  $16\frac{1}{2}$ in. diam., circa 1740; and a reproduction Dish, stamped Harris (6)



10 A pair of pewter Cup Salts, the plain bowl of each standing on short stem and slightly domed foot with multiple-reeded borders,  $3\frac{1}{4}$ in. high, circa 1750-1780 (2)

11 A George IV Tankard of 1-quart capacity by *John Carruthers Crane*, with spout and perforated grating at front; another of 1-pint capacity by *Yates, Birch & Spooner*; another of  $\frac{1}{2}$ -pint capacity by the same maker; another of similar type but without spout, all circa 1820; two pairs of baluster-stemmed Candlesticks with push-rod ejectors, 8in., 19th Century; and four other items (12)

12 A quantity of bulbous lidless Tavern Measures from 1-pint to  $\frac{1}{8}$ -gill capacities, including several repetitions of some sizes, dating from 1820 (15)

13 A circular Plate with triple-reeded rim, 10in. diam., circa 1690; a pair of hot-water Plates by *Thomas Compton* (Cott. No. 1063),  $10\frac{1}{4}$ in. diam. across handles; and another by *J. Yates*; a pair of baluster-stemmed Candlesticks with push-rod ejectors, 9in. high; and three tapering cylindrical Tankards, of 1-quart, 1-pint and  $\frac{1}{2}$ -pint capacity, the larger two by *M. Fothergill of Bristol*, all early 19th Century (9)

14 A set of twelve plain-rimmed Plates stamped on the reverse with owner's initials and indistinct 'hallmarks' of BS, possibly by *Bartholomew Shorey* (Cott. No. 4261),  $9\frac{3}{4}$ in. diam., circa 1750 (12)

15 A set of five pewter hot-water Plates with ring handles by *J. Townsend & R. Reynolds* (Cott. No. 4797), 9in diam.; a pair of similar Plates by *John Home* (Cott. No. 2393), all circa 1770; and three 1-pint Tankards with double-scrolled handles; and a Balsam Inhaler (lacking cover), all early 19th Century (11)

16 A set of three English Dishes with plain rims and owner's initials RDA on reverse, otherwise unmarked; and two similar Dishes both with traces of a touch on reverse, one bearing initials PP, all 15in. diam., circa 1760 (5)

17 A plain-rimmed Dish by *Richard Yates* (Cott. No. 5344); and four similar Dishes with various owners' initials on reverse, two bearing traces of 'hallmarks', all  $16\frac{1}{2}$ in. diam., circa 1760-1770 (5)

18 A circular Dish with single-reeded rim; another similar, both 15in. diam.; another, larger, with traces of a touchmark on reverse,  $16\frac{1}{2}$ in. diam.; another, the rim stamped with initials and dated 1784,  $18\frac{1}{4}$ in. diam., all circa 1750; and a late plain-rimmed Plate, the well engraved with a pseudo coat-of-arms,  $9\frac{1}{2}$ in. diam., circa 1800 (5)

19 A good pair of English circular Dishes by *William Smith(e)*, (Cott. No. 4402), his touch and 'hallmarks' on reverse, the single-reeded rims bearing owner's initials M.R., 15in. diam., circa 1740

20 A Scottish Tappit-Hen Measure of three pint (imperial) capacity, with domed and crested cover, the collar engraved with owner's initials <sup>W</sup><sub>E</sub><sup>R</sup><sub>M</sub>, 12in. high, circa 1800

21 A plain-rimmed Plate by *Samuel Cocks* (Cott. No. 1004); a similar Plate by *Richard Norfolk* (Cott. No. 3409),  $9\frac{1}{2}$ in. diam., circa 1750; a good pair of pewter Sugar Casters,  $6\frac{1}{2}$ in.; another,  $5\frac{1}{2}$ in.; six Pepperettes of various shapes (some Britannia Metal); and a late Tavern Mug by *Burley*, all 18th/19th Century (12)

22 A Victorian Tankard of 1-pint capacity by *C. Bentley* (Cott. No. 407), 5in., circa 1840; a  $\frac{1}{2}$ -pint Tankard of somewhat similar type; three bulbous lidless Tavern Measures of various small capacities; an oval lead portrait Plaque; and a circular 'Billie and Charlie' Medallion cast in 'cock metal', all 19th Century (7)

23 A circular Dish with single-reeded rim by *Edward Box* (Cott. No. 538),  $16\frac{1}{2}$ in. diam.; a deep Dish also with single-reeded rim, the reverse bearing the touchmark of *John Duncomb(e)* (Cott. No. 1465),  $14\frac{1}{2}$ in. diam., both circa 1730-1740; and a flat, circular Bed-pan with single, screw-on, pewter handle, the reverse with a London touchmark, 12in. diam., late 18th Century (3)



24 An attractive pair of oval Dishes by *Joseph Spackman & Co.* (Cott. No. 4443), with four-lobed 'wavy-edge' rims,  $12\frac{3}{4}$ in. by 9in., late 18th Century (2)

25 An interesting pewter Plate with stepped and beaded rim by *James Leatherbarrow* (Cott. No. 2924), the reverse engraved *Steeple Gidding*,  $7\frac{1}{2}$ in. diam., circa 1690

\*\* This was originally a footed plate, as illustrated in Cotterell 'Old Pewter . . .' p. 127, pl. LIX, figs. a and b, the base having become separated later

26 A Victorian Tankard of 1-quart capacity with incurved foot, spout at front and double-scrolled handle,  $6\frac{1}{2}$ in.; another of 1-pint capacity; a 1-quart Tankard by *Villers & Wilkes* with tapering cylindrical drum, 6in.; another of similar type; a Tankard of 1-pint capacity by *John Warne*,  $5\frac{1}{4}$ in.; four others of similar type and capacity; and a brass-rimmed Measure of 1-pint size by *James Yates*, all first half 19th Century (9)

27 A GOOD GEORGIAN LIDDED TANKARD by *William Eddon (or Eden)*, (Cott. No. 1503), the cylindrical drum with a single fillet around the lower section and moulded foot rim, the double-domed cover with solid chairback thumbpiece and single-scrolled handle with ball terminal, the maker's mark inside base, his 'hallmarks' and a William IV Excise Seal on the lip, the front engraved with an elaborate heraldic device enclosing a monogram, 7in. overall, circa 1730

28 Another Georgian Tankard of similar general outline, the neck bearing 'hallmarks' of *Thomas Carpenter*, inside the base an indistinct touch-mark, 7in. overall, circa 1750; and a lidless Tankard of  $\frac{1}{2}$ -pint capacity, 4in., circa 1830 (2)

29 A circular pewter Baptismal Bowl by *Graham & Wardrop of Glasgow* (Cott. No. 1943), with narrow single-reeded rim, 10in. diam.,  $2\frac{3}{4}$ in. deep, late 18th Century

30 A Scottish Tappit-Hen Measure, of 3-pint (Imperial) capacity, with hinged, domed and crested cover, 12in. overall, 18th Century

31 An English pear-shaped Tankard with hinged, double-domed cover, open chairback thumbpiece and double-scrolled handle, indistinct 'hallmarks' on lip,  $7\frac{3}{4}$ in. overall, second half 18th Century

32 A circular plain-rimmed Plate by John Langford (Cott. No. 2824),  $9\frac{1}{4}$ in. diam.; a similar Plate by Henry Sewdley (Cott. No. 4193),  $9\frac{1}{2}$ in. diam., both circa 1750; a circular hot-water Plate by Samuel Cocks (Cott. No. 1004); and a pair of brass-rimmed Measures of  $\frac{1}{2}$ -pint capacity, early 19th Century (5)

33 A circular English Dish with cast multiple-reeded rim by Thomas Peisley of London (Cott. No. 3598),  $16\frac{1}{2}$ in. diam., circa 1700

34 A circular Dish with single-reeded rim by Richard King of Gracious Street (Cott. No. 2750); another Dish of similar type with touchmark on reverse, both  $16\frac{1}{2}$ in. diam., circa 1745 (2)

35 A Scottish Tappit-Hen Measure of Scots pint capacity (three pints Imperial) with plain, hinged and domed cover, 11in. overall, 18th Century; and a Flemish cylindrical Measure of 1-litre capacity with spout at front, hinged cover and shell thumbpiece,  $8\frac{3}{4}$ in., 19th Century (2)

36 A quantity of bulbous, lidless Tavern Measures, including two specimens of each capacity from 1-pint to  $\frac{1}{4}$ -gill, dating from 1820 (11)

37 A large oval Dish with plain rim by Richard Yates of Shoreditch (Cott. No. 5344), 23in. by 18in., circa 1780; a pewter Inkstand of Treasury type, lacking interior fittings,  $8\frac{1}{2}$ in. by 5in.; a Candlestick with knopped baluster stem and push-rod ejector, 9in.; a glass-bottomed Rowing Trophy with double-scroll handles,  $7\frac{1}{2}$ in.; a Britannia Metal hot-water Plate; a Ladle; and two other items (8)

38 A series of six bulbous lidless Tavern Measures of 1-quart to  $\frac{1}{4}$ -gill capacity, the larger sizes bearing the mark of James Yates, 6in. to  $1\frac{1}{2}$ in., early 19th Century (6)



39 An English lidded baluster Measure of  $\frac{1}{2}$ -gill capacity, with double-volute thumbpiece,  $3\frac{1}{4}$ in. high, mid-18th Century; a quart Tankard, 6in., circa 1830; a group of four Britannia Metal  $\frac{1}{2}$ -pint Tankards, the tapering drums ornamented in low relief with hunting and shooting scenes, 4in.; two small bulbous lidless Measures; a tea-glass holder; and a late continental Wine Can,  $9\frac{1}{2}$ in. high

40 A set of three Plates by *Jonas Durand* (Cott. No. 1476), the plain rims engraved with a monogram; a similar Plate by the same maker, the rim bearing a crest; and two other Plates, unmarked, all  $9\frac{1}{2}$ in. diam., circa 1750 (6)

41 A large oval Dish by *Thomas Chamberlain* (Cott. No. 873), the plain rim engraved at top with a crowned initial C,  $22\frac{3}{4}$ in. by  $17\frac{3}{4}$ in., circa 1750

42 A circular plain-rimmed Plate and a pair of deep Plates, all by *Thomas Chamberlain*, from the same service as the previous lot; and a pair of Plates by *S. Spateman* (Cott. No. 4448), the plain rims engraved with a coat-of-arms, all  $9\frac{1}{2}$ in. diam., circa 1750 (5)

43 A pair of circular Dishes by *Allen Bright* (Cott. No. 574), the single-reeded rims bearing ownership initials MT, 15in. diam., circa 1740 (2)

44 A circular English Dish by the pewterer *WF* (Cott. No. 5605) with cast multiple-reeded rim; and another Dish with incised multiple-reeded rim bearing 'hallmarks' of the maker *RD*, both  $18\frac{1}{4}$ in. diam., circa 1680 (2)

45 A circular English Dish with cast multiple-reeded rim bearing 'hallmarks'; and a similar Dish, the reverse with the date 1672, both 15in. diam., circa 1680 (2)

46 A group of three Scottish pear-shaped Measures of Glasgow single-domed type, from 1-pint to 1-gill capacity,  $6\frac{3}{4}$ in. to  $4\frac{3}{4}$ in. high, early 19th Century (3)

47 A Scottish Tappit-Hen Measure with plain domed cover of Scots pint (three Imperial pints) capacity,  $11\frac{1}{4}$ in. overall, late 18th Century

48 A circular single-reeded Dish with touchmark on reverse,  $15\frac{3}{4}$ in. diam., circa 1740; and a deep Dish also with single-reeded rim, by Thomas Alderson (Cott. No. 40),  $14\frac{3}{4}$ in. diam., circa 1790 (2)

49 A series of six bulbous lidless Tavern Measures, from 1-quart to  $\frac{1}{4}$ -gill capacity,  $6\frac{1}{4}$ in. to  $2\frac{1}{2}$ in. dating from 1820 (6)

50 A William IV cylindrical Tankard, of 1-quart capacity, standing on incurved foot rim with double-scrolled handle and spout at side, 6in.; a similar Tankard of 1-pint capacity, 5in.; a group of three  $\frac{1}{2}$ -pint Tankards of similar outline but without spout; and another similar of 1-pint size, all early to mid-19th Century (6)

51 A pewter Tankard of 1-quart capacity by James Yates, the tapering cylindrical drum encircled by a single fillet and standing on moulded foot; three others similar,  $5\frac{3}{4}$ in. to 6in.; a group of four similar Tankards of 1-pint capacity,  $4\frac{1}{2}$ in.; and a further group of four Tankards of  $\frac{1}{2}$ -pint capacity, mostly early 19th Century (12)

52 A plain-rimmed English Dish by William Cook(e) of Bristol (Cott. No. 1095), 15in. diam., circa 1790; and a larger Dish of similar type by the maker SP,  $16\frac{1}{2}$ in. diam., circa 1750 (2)

53 A circular deep Dish, the single-reeded rim engraved with a band of foliate creeper, the well with a pseudo royal coat-of-arms within mantling, probably Scottish, 18th Century

54 A circular Stuart Dish with incised multiple-reeded rim by I. Horton of London (Cott. No. 5667 records the mark but not the name), the surface displaying a regular series of hammermarks, 18in. diam., circa 1685





55 A good English Dish by the pewterer WS (Cott. No. 5961), the plain broad rim bearing his unrecorded 'hallmarks',  $17\frac{3}{4}$ in. diam., circa 1660-70

56 A good circular Dish by John Raymond (Cott. No. 3851), the cast multiple-reeded rim with 'hallmarks', his touch on reverse,  $16\frac{1}{2}$ in. diam.; and a similar, slightly smaller Dish by the same maker, 15in. diam., both circa 1690 (2)

\*\* The obscure marks recorded by Cotterell as No. 5889 are those of John Raymond

57 A RARE ENGLISH CANDLESTICK with cylindrical column encircled by a single fillet and set upon a hollow ball knob which rises from a circular beaded base, the whole on octagonal foot with reeded border,  $6\frac{1}{2}$ in. high, circa 1690

\*\* For an example of this type see Cotterell's Pewter down the Ages, fig. 98 (centre)

58 A good Stuart Dish with incised multiple-reeded rim, by Henry Frewen of Reading (unrecorded), the rim bearing 'hallmarks' and ownership initials  $w^N_E$ , 20in. diam., circa 1680

59 Another Stuart Dish with cast multiple-reeded rim bearing 'hallmarks' and ownership initials WH, the touchmark on reverse of a heart pierced by an anchor in a beaded circle with initials EE,  $19\frac{1}{2}$ in. diam., circa 1685

60 A GOOD STUART CHARGER with incised triple-reeded rim bearing 'hallmarks' and ownership initials  $w^C_M$ , the reverse with a touchmark,  $23\frac{3}{4}$ in. diam., circa 1685

61 A RARE AND EARLY ENGLISH MEASURE of slender, baluster form, the flat, hinged cover with wedge and ball thumbpiece, a maker's mark IB (similar to Cott. No. 5440) at top of handle,  $6\frac{1}{8}$ in. overall, circa 1600

(See ILLUSTRATION)



The Property of Mrs. Swendoline Smith of Leicester

62 A RARE ENGLISH BALUSTER-SHAPED WINE MEASURE of 1-gallon capacity (Old English Wine Standard), the flat hinged cover with 'bud' thumbpiece and bearing ownership initials WP and T<sup>R</sup>s, the curved handle with shield terminal, traces of maker's mark on lip, 11in. to lip, 13in. overall, circa 1690

\*\* An example of this type is illustrated in the catalogue of pewter-ware belonging to the Worshipful Company of Pewterers, no. 252, p. 56 and pl. 27 (centre)

63 Another baluster-shaped Wine Measure (a reproduction of an earlier type), the flat cover with 'hammerhead' thumbpiece, of 1-gallon capacity, the bulbous body encircled by two bands of reeding, 11in. to lip, 13in. overall

64 An attractive Dutch Beaker of slightly tapering cylindrical form, with flared lip and moulded foot-rim, the whole engraved in 'wriggled' technique with two oval panels containing half-length portraits of William III and Mary, a maker's mark on base, 6 $\frac{3}{4}$ in. high, circa 1690

65 Another, almost identical, 6 $\frac{3}{4}$ in., circa 1690

66 A RARE WILLIAM III TANKARD of tapering cylindrical form on spreading moulded foot, the drum engraved all over in wriggled technique with flowers and foliage centred by an oval panel containing a half-length portrait of William III above monogram 'W.R.', the handle bearing ownership initials IB and terminating in a rare and finely cast horse's head with shield, a maker's mark IS inside base, 4 $\frac{1}{2}$ in. to lip, circa 1690, cover and hinge wanting

(See ILLUSTRATION)

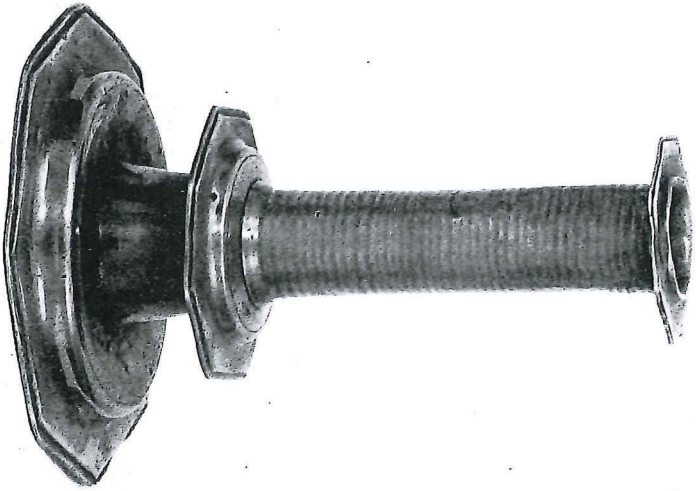
\*\* Another Tankard by IS, also displaying this rare handle terminal, is in the Moyse's Hall Museum and was illustrated and described by Capt. A. Sutherland-Graeme in an article on Fine Pewter in Local Museums, *Connoisseur*, June 1949

67 A GOOD LIDLESS TAVERN MUG of late Stuart period, the tapering cylindrical body encircled by two narrow hooped bands, the curved handle with splayed terminal, a maker's mark inside base, crowned WR at lip, 5 $\frac{1}{2}$ in. high, circa 1690-1700

(See ILLUSTRATION)



67



70



66





71



72

68 A RARE WILLIAM AND MARY TANKARD of tapering cylindrical form, the flat-topped hinged cover with denticulated frontal projections, 'ramshorn' thumbpiece and engraved with a wriggled-work design, the drum similarly decorated with two roundels containing separate outline portraits of William III and Mary with monograms, the swan-neck handle with 'boot-heel' terminal, *the maker's mark, TN in a beaded circle (unrecorded), inside base, 6½ in. overall, circa 1690*

69 A RARE ENGLISH CANDLESTICK of 17th Century period, the cylindrical column centred by three shallow bands of reeding and set upon a hollow ball knob which rises from a depressed, circular foot, a wide flange to the sconce (repaired), *6½ in. high, late 17th Century*

\*\* A similar candlestick is illustrated by Cotterell, 'Old Pewter . . .' pl. XXIIa

70 A FINE STUART OCTAGONAL-BASED CANDLESTICK, the cylindrical column decorated with bands of horizontal reeding, the sconce, drip-guard and slightly domed base all of octagonal form with reeded edges, *a maker's mark SB stamped on column beneath sconce, 8½ in. high, circa 1675*

\*\* For another example of this type see Cotterell, *op. cit.*, pl. XXIIIc

(See ILLUSTRATION)

71 A FINE AND ATTRACTIVE MONTEITH, the scalloped rim embellished with cherubs' heads and scrolls in high relief, the bowl with two jointed handles pendent from relief-cast lion's head masks, the front engraved with a coat-of-arms, a fleur-de-lis within heraldic mantling, *10 in. diam. overall, 5½ in. high, mid-18th Century*

(See ILLUSTRATION)

#### The Property of a Gentleman

72 AN ENGLISH PROVINCIAL FLAGON, the body of plain cylindrical form with broad skirted base and handle with shield terminal, the cover of 'beefeater's hat' type with an unusual thumbpiece likened to splayed feathers, an unrecorded mark of the maker *John Webber of Barnstaple* (Cott. No. 5016) in shaped outline inside base, *9 in. to top of cover, 10 in. overall, mid-17th Century*

(See ILLUSTRATION)



The Property of Mrs. J. Beresford

THE FOLLOWING LOTS CONSIST OF A FINE ARMORIAL TABLE SETTING (OR GARNISH) OF PEWTER, IN EXCEPTIONAL CONDITION, made by the London pewterer, Thomas Chamberlain, who is recorded as of King Street, corner of Greek Street, Soho. Thomas Chamberlain was given leave to strike his touch in 1734 and is mentioned up to 1806. He was Master of the Pewterers' Company in 1765. See Cotterell's 'Old Pewter, its Makers and Marks', No. 873

(See ILLUSTRATION)

*The arms are probably those of Fraser, of Lovat, co. Inverness*

73 Twelve wavy-edged (five-lobed) Dinner Plates with shallow wells and multiple-reefed borders,  $9\frac{1}{2}$ in. diam. (12)

74 Twelve similar Plates (12)

75 Twelve wavy-edged Plates of identical type, but with deeper wells,  $9\frac{1}{2}$ in. diam. (12)

76 Four oval Meat Dishes with wavy-edged (four-lobed) rims,  $11\frac{1}{4}$ in. by  $8\frac{1}{2}$ in. (4)

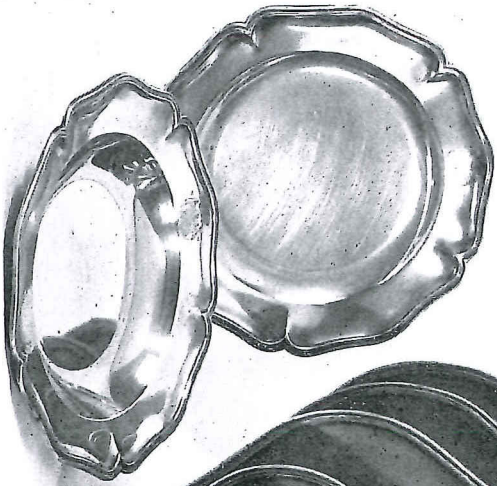
77 Four similar, but larger, 14in. by  $10\frac{1}{2}$ in. (4)

78 Two similar, but larger, 17in. by  $12\frac{1}{2}$ in. (2)

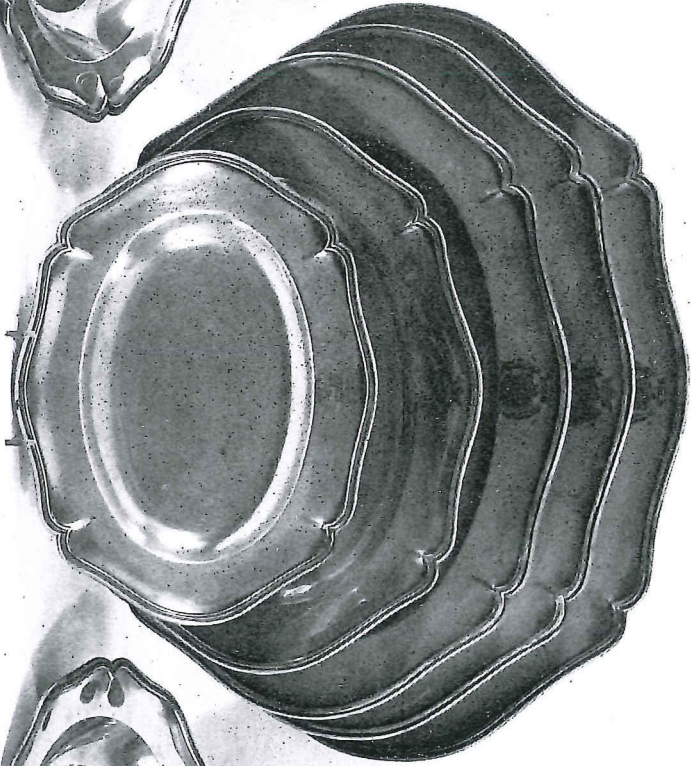
79 Two similar, but larger, 19in. by 14in. (2)

80 Two similar, but larger, 21in. by  $15\frac{1}{2}$ in. (2)

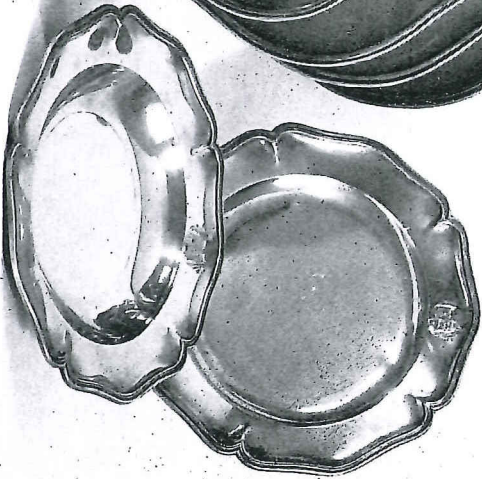
\* \* \* Another fine armorial Garnish of pewter by Thomas Chamberlain, the property of the Trustees of the Earl of Mount Edgcumbe, was sold in these rooms on 1st June, 1956, lots 40-56



73 75



80  
79  
78  
77  
76



75 74



## CONTINENTAL PEWTER

## Various Properties

81 An attractive continental Alms Dish, the single-reeded rim decorated in punched work with a continuous band of oak leaves and other motifs, the well engraved with the Evangelist Mark accompanied by a winged lion, the reverse bearing ownership initials G.T., 14½ in. diam., 18th Century

82 A German lidded Tankard, the cylindrical drum engraved with a man and a woman in contemporary dress, the hinged cover encircled by two bands of relief-cast beading and engraved with owner's initials and date 1812, the whole with double-curved handle and ball thumbpiece, 9½ in., early 19th Century; and a small bulbous-bodied Wine Cruet with spout and hinged cover, 4¼ in., 17th/18th Century (2)

83 A bulbous-bodied Swiss Wine Measure standing on incurved foot, the heart-shaped hinged cover with twin sycamore-seed thumbpiece resting on wide collar and incurved neck, maker's mark on cover, 10 in. overall, 18th Century; and a late Porringer with one ear replaced, 7¼ in. overall (2)

84 A Flemish lidded Jug or Measure, the bulbous body on incurved foot with hinged domed cover, shell thumbpiece and spout at front, maker's marks on base, 9½ in.; another of similar general outline with double-curved handle, 10½ in., both late 18th Century; a Flemish cylindrical Measure of 1-litre capacity with stepped cover, shell thumbpiece and spout at front by *Jacq. Dekeghel*; and another similar by *I. B. Duvivier*, both 9 in. high, 19th Century (4)

85 An attractive continental Chocolate Pot with hinged domed cover and spout at front, the whole decorated with wrythen flutes in rococo style, 8 in. high, probably German, circa 1780; a wavy-edged Dish with engraved bordered, the reverse bearing date 1792, owner's initials and a maker's mark, 12½ in. diam., late 18th Century; a French cylindrical lidless Measure of 1-litre capacity; and a pair of similar Measures of demi-litre capacity, all 19th Century (5)

86 A Channel Islands (Guernsey) Measure of slightly unusual form, the plain neck and bulbous body standing on uncurved foot rim, the heart-shaped hinged cover stamped *Ns. L. Ct., Guernesey* between two roses and bearing owner's initials MBT,  $8\frac{3}{4}$ in. overall; and another, similar but smaller, the lip rim stamped with a fleur-de-lys and a flower-head in separate punches, 7in., both 18th Century (2)

87 A Flemish Flagon of slim bulbous form with hinged domed cover, shell thumbpiece and short handle, a maker's mark on underside of base,  $9\frac{1}{2}$ in. to top of cover; and a similar Flagon or Measure with spout at front and shell thumbpiece (the hinged cover wanting),  $9\frac{1}{2}$ in. to rim, both late 18th Century (2)

88 A Flemish Measure or Flagon, the body slightly more bulbous at base, with hinged domed cover and plain erect thumbpiece, the maker's mark on underside of cover,  $8\frac{3}{4}$ in. to top of cover, late 18th Century

89 A set of five French cylindrical lidless Measures, of 1-litre to demi-decilitre capacities (two faulty),  $7\frac{1}{2}$ in. to  $2\frac{3}{4}$ in. high; an English  $\frac{1}{2}$ -pint Tankard with double-scrolled handle, 4in.; two other Tankards of similar capacity; and a pair of Britannia Metal Salts, all 19th Century (10)

90 A series of three Flemish Measures from double-litre to demi-litre capacity, the cylindrical bodies with spout at front and rectangular handles, the stepped cover with shell thumbpiece, maker's marks on base, 10in. to 6in., 1st half 19th Century (3)

91 A German lidded Wine Can of flared cylindrical form with spout at front, erect thumbpiece and relief-cast handle terminal, a maker's mark inside cover, 11in. overall, early 19th Century

92 A SWISS OCTAGONAL PEWTER WINE CAN by *Johann Ulrich Bauer*, with hinged spout at front and screw-on cover surmounted by large ring handle, the body engraved with trelliswork containing panels depicting bears in uniform, the front two panels with armorials, initials VG and the date 1789, 11in. overall, Swiss, late 18th Century

\*\*  
\* Johann Ulrich Bauer was active Master from the year 1757 in the town of Chur. The initials and armorials are probably those of the von Graffenried family of Bern



93 A SET OF THREE ALTAR CANDLEHOLDERS with multi-knopped and wrythen-fluted stems supporting deep drip-pans centred by iron prickets, each standing on triangular base cast with shell motifs around a blank cartouche applied on one side with a small shield bearing a bishop's coat-of-arms and date 1752, *centre stick 32in. high, remaining two 27½in. high, Flemish, circa mid-18th Century* (3)

94 A pair of Altar Candleholders of similar general outline to the preceding lot, *22½in. high, Flemish, mid to late 18th Century* (2)

95 A further Candleholder with baluster-knopped stem supporting grease-pan and iron pricket, the whole on triangular base cast with winged cherubs' heads, *20½in. high (faulty); and another standing on similar base with multi-knopped stem, 21in. high, both Flemish, circa mid-18th Century* (2)

96 A series of six French cylindrical Measures from double-litre to demi-decilitre capacities, the hinged cover resting on a sloping collar, some stamped *A. Mulot, 3in. to 10in. high, 19th Century; and a reproduction continental Wine Measure* (7)

97 A pair of circular continental Dishes, the single-reeded rims bearing college marks, the reverse with town and maker's marks, *13in. diam., circa 1750* (2)

98 An interesting German Tankard (Pechkrug) of tapering cylindrical shape, the wood drum inlaid with engraved pewter in a design of two stags amidst foliage and centred by a crowned oval panel bearing an inscription, the slightly domed cover with a relief-cast medallion of Frederick the Great, the handle surmounted by a large ball thumbpiece, maker's marks inside cover, *10¼in. overall, first half 19th Century*

99 A small German Wine Can of flared form, with slightly dished cover and erect thumbpiece, the handle terminating in a relief-cast cherub's head, the front of the drum engraved with the owner's initials MF and KF within a wreath, *7¼in., late 17th or early 18th Century*

100 An attractive Swiss Wine Measure, the bulbous body with angular shoulder, thin neck and wide collar, the heart-shaped hinged cover with twin sycamore-seed thumbpiece and stamped with maker's mark, 8in. overall, 18th Century

101 A Normandy Flagon of conventional form with hinged, heart-shaped cover and twin-acorn thumbpiece, 10in. high, 18th Century

102 A Swedish Tankard, the drum tapering outwards slightly towards the top with a band of multiple reeding around the lower section, and standing on an ovolo moulded foot, the double-domed hinged cover with an inset portrait medallion of Charles XII and an erect fluted thumbpiece, the handle of unusual double-curved form with shield terminal, maker's mark on base, 8in. overall, mid to late 18th Century

103 A French helmet-shaped Ewer (Aiguière en Casque), the cylindrical neck with large spout at front, the body bulging out toward the base and fitted with ornamental handle, the whole on squat stem and domed moulded foot, 10½in. overall, mid-18th Century; and a continental Flagon with spout at front, the body of pear-shape with raised moulding at belly and ovolo foot rim, the hinged, domed cover with central knob, 8½in. overall (2)

104 An early French Plate with broad plain rim and deep well with slight boss in centre, the front of the rim punched with maker's and town marks (one dated (?) 1608), 7½in. diam., early 17th Century

105 Two South European Candlesticks (almost a pair), the columns of baluster form with inverted acorn knob standing on bulbous base with grease depression at top and ovolo-moulded foot rim, 5in. and 4½in. respectively, early 18th Century (2)

106 A pair of South European Candlesticks of similar form to the preceding lot, 6in. high, early 18th Century (2)

107 Another pair of South European Candlesticks of similar form but larger, engraved around the bulbous bases Das Almas Dos Anjos, 6in. high (originally probably 7in.), early 18th Century, some faults (2)



108 A Spanish Candlestick with knopped and flanged sconce on short annular-knopped stem rising from a broad cylindrical drum base with everted and moulded foot rim,  $4\frac{1}{2}$ in. high, early 18th Century; and another of the same general character but less ornamented, 5in. high, late 18th Century (2)

109 A continental pewter Passover Plate, the single-reeded rim engraved in Hebrew characters with the order of the Passover Eve service, the well decorated with a ewer and basin above a large ten-pointed star within a border of flowering creeper and further inscriptions, the reverse bears the touchmark of *Borgarde Klust?*, 17in. diam., probably German, 18th Century

110 A continental (probably German) Wine Can of flared form, the drum encircled with incised bands of multiple reeding and surmounted by a heart-shaped hinged cover engraved with date 1784 and initials of the owner, the whole with short curved handle bearing maker's and town marks and erect thumbpiece, 13in. overall, 18th Century

111 A continental pewter Saucepan with bulbous sides, narrow collar and spout at side, a touchmark inside base and owner's initials underneath,  $5\frac{3}{4}$ in. diam. overall, 18th Century (wood handle wanting)

112 A FINE GUILD FLAGON of flared form, originally the property of a Miner's Guild, the lip and foot rim of the otherwise plain body decorated in punched work with stylised flowerheads and acanthus leaves between bands of multiple reeding, the hinged domed cover centred by a lion sejant supporting a brass-faced shield applied with the tools of the craft and engraved with date 1621, the whole with short curved handle and standing on three lion sejant feet, 19in. high, probably Saxon, 17th Century

113 A DECORATIVE CONTINENTAL ROSE-WATER DISH, the broad plain rim engraved with tulips and other floral motifs and the initials GVR, the shallow well engraved around the edge with repeated acanthus leaves and having a raised central boss in the form of a stylised flowerhead, maker's and town mark on reverse of rim,  $14\frac{1}{2}$ in. diam, early to mid-17th Century

114 AN EARLY GERMAN FLAGON with tall cylindrical body in three sections, the top and bottom section engraved between bands of scrolling foliage with the inscription: Diese Kanne haben die beiden Gebrüder als Herman Hüge und Iurgen Hüge wieder reparieren lassen wegen ihres Grossvatters Iohan Hüge, 1674, the polyhedral centre section with seven panels enclosing floral and other motifs, the front panel depicting an early housemark, the septagonal cover set with a fine circular relief-cast medallion and erect thumbpiece, the short curved handle bearing marks, 12in. overall, probably late 16th Century (the body repaired and inscribed in 1674

(See ILLUSTRATION)

114

The Property of Miss C. J. M. Davis

115 A GERMAN WINE CAN of flared form, the heart-shaped hinged cover surmounted by a relief-cast dolphin, the short curved handle with large ball thumbpiece, the body engraved at front with a wreath containing the initials IGM repeated and date 1757 between two raised bands and further incised bands of reeding, 13½in. overall, mid-18th Century

\*\* This example is illustrated by Cotterell, in *National Types of Old Pewter*, p. 7, fig. 24

116

116 A FINE AND ATTRACTIVE GERMAN PEG TANKARD of tall cylindrical form, the drum encircled by three well-engraved landscape panels depicting scenes from the hunt; in the centre panel three huntsmen accompanied by hounds attack bears with their pikes, above and below hounds are shown harassing a boar and a stag, on the hinged cover a further scene of hounds pursuing a hare centred by an inset gilt medallion, the short angular handle bearing indistinct marks (repeated thrice) of a lion supporting a ewer in an oval border, the whole surmounted by an onion-shaped thumbpiece, 12in. overall, mid-17th Century

\*\* Illustrated by Cotterell in *National Types of Old Pewter*, p. 7, fig. 26

(See ILLUSTRATION)



114



116







118



117



119



119 117 A GOOD GERMAN GUILD CUP, with fine patina, in the form of a tall covered Goblet, formerly the property of a Needlemaker's Guild; the bowl of double globular form with raised inverted tear-drop panels engraved with inscriptions relating to Guild members and alternating with applied lion masks pierced for medallions (now missing), the whole supported on the head and upraised arm of a putti standing on circular base, the separate slightly domed cover centred by a standing figure of a journeyman supporting a shield engraved *Dieser Schenkstock Ist Durch Meister Und Gesellen Der Nadler Aufgerichtet Worden*, a maker's mark GF and town mark inside cover, and the date November 1696 in one of the tear-drop panels, 15in. overall, late 17th Century

(See ILLUSTRATION)

117 118 A FINE SAXON GUILD FLAGON by *Christoph Dürr of Annaberg*, the tapering cylindrical drum engraved in three sections with flowers and foliate scrolls between bands of multiple reeding, the central section further engraved with the names of four Guild members within a wreath, the hinged domed cover centred by a figure (missing) supporting a shield inscribed: *Die Kanne Des Löblichen Handwercks Der Bosamentmacher* (Lace or Fringe makers) In Thum 1680, the whole with short curved handle surmounted by an erect thumbpiece and standing on three bun feet, 14in. to lip, 18in. overall, second half of the 17th Century

\*\* The pewterer Christoph Dürr of Annaberg, whose family continued the craft until the late 18th Century, became Master in 1650 and died in 1682. His touchmark is recorded in 'German Pewterer's and their Marks', by Erwin Hintze, Vol. 1, p. 11, no. 49. This particular example of his work is illustrated by Cotterell in 'National Types of Old Pewter', p. 37, fig. 206

(See ILLUSTRATION)

118 119 A FINE GERMAN GUILD FLAGON of tall cylindrical form with hinged double-domed cover and short curved handle bearing maker's and town marks, the drum engraved between two bands of reeding with the coat-of-arms and member's names of a Swordmaker's Guild above the inscription: *Dit Is Der Repper Gesellen Ehr Schenk Kan* and date 1645, an aperture for a tap (now filled in) at base of drum, 15½in. overall, circa mid-17th Century

\*\* This flagon is illustrated by Cotterell, *op. cit.*, p. 10, fig. 37

(See ILLUSTRATION)

**The Property of a Gentleman**

120 A MASSIVE SWISS BRONZE-MOUNTED WINE CAN, the bulbous pewter body of inverted acorn shape on short stem and domed spreading base with hinged 'bun' cover at top, the whole encircled at intervals with bands of multiple reeding and mounted in bronze with a crowned bird's head spout at front, a swing handle composed of spouting dolphins supported on the heads of melusines and a shield cast with the coat-of-arms of Lucern, the foot-rim and cover finial also of bronze, inside the base a relief-cast pewter crucifixion medallion, 22in. (56cm.) high including handle, Lucern, late 17th Century

\* \* Twelve similar wine cans (Luzerne Kannen), made by Caspar Traber on the occasion of the renewal of an alliance between Lucern and the canton of Wallis in 1687, are in the Historisches Museum in Lucern. One of them is illustrated and described by Dr. Gustav Bossard in *Die Zinngiesser der Schweiz und ihr Werk*, Vol. 2, p. 37 and pl. 5 (2)

(See ILLUSTRATION)





6/89

CATALOGUE

**SOTHEBY & CO.**

34/35, New Bond Street, London, W.1.

Sale of

ENGLISH AND CONTINENTAL  
FURNITURE  
GOOD PEWTER, TREEN AND CLOCKS

Friday, 28th November, 1969

**PRICE LIST**

Lot		£	\$	Lot		£	\$
1	Baer, H.	110	264	34	Bellman	32	76
2	Osborne, T.	85	204	35	Lewis, S.	75	180
3	Mundey	40	96	36	Wolsey	40	96
4	Mundey	25	60	37	Wellby, H.S.	45	108
5	Wolsey	65	156	38	Osborne, T.	28	67
6	Baer, H.	45	108	39	Osborne, T.	60	144
7	Osborne, T.	55	132	40	Mundey	65	156
8	Lewis, S.	42	100	41	Mundey	90	216
9	de Waart	55	132	42	Mundey	80	192
10	Lewis, S.	35	84	43	de Waart	55	132
11	Lewis, S.	55	132	44	Pepperell, Mrs.	100	240
12	de Waart	60	144	45	Tamworth Corporation	50	120
13	Osborne, T.	48	115	46	Mundey	35	84
14	Wolsey	135	324	47	Lewis, S.	50	120
15	Mundey	15	36	48	Wolsey	45	108
16	Wolsey	85	204	49	Mundey	38	91
17	de Waart	85	204	50	Wolsey	60	144
18	de Waart	40	96	51	Wolsey	125	300
19	de Waart	40	96	52	Tamworth Corporation	28	67
20	Buckell, H.W.L.	105	252	53	Casimir	34	81
21	Svensson	60	144	54	Mundey	20	48
22	Bellman	30	72	55	Lewis, S.	70	168
23	Lewis, S.	28	67	56	Michaelis	40	96
24	Mundey	55	132	57	Buckell, H.W.L.	105	252
25	Bellman	18	43	58	Bellman	42	100
26	Baer, H.	70	168	59	Bellman	35	84
27	Mundey	65	156	60	Mundey	165	396
28	Lewis, S.	50	120	61	Mundey	220	528
29	Lewis, S.	35	84	62	Mundey	210	504
30	Jensen	85	204	63	Allison, Miss	100	240
31	Mundey	35	84	64	Mundey	120	288
32	Lewis, S.	28	67	65	Pepperell, Mrs.	140	336
33	Lewis, S.	25	60	66	Bradley, R.E.	200	480



Terms of Sale by Auction

				2.							
Lot		£	\$	Lot		£	\$	Lot		£	\$
67	Bradley, R.E.	200	480	112	Pepperell, Mrs.	180	432	155	Dombey		
68	Bellman	210	504	113	Wolsey	65	156	156	Graus Antiques		
69	Bradley, R.E.	120	288	114	Pepperell, Mrs.	150	360	157	Rubin		
70	Bradley, R.E.	390		115	Bellman	85	204	158	Brown, C.L.		
71	Simmons, E.	250	600	116	Neuhaus, D.	500	1200	159	Brown, C.L.		
72	Thomas, S.E.	220	528	117	Scott, L.	280	672	160	Neilson, B.		
73	Wolsey	340	816	118	Pepperell, Mrs.	250	650	161	de Waart		
74	Mundey	280	672	119	Wellby, H.S.	260	624	162	Svensson		
75	Mundey	270	648	120	Wolsey	1000	2400	163	Hyde Park		
76	Simmons, E.	160	384	121	Tayan, Miss C.F.	15	36	164	Pearson, M.		
77	Mundey	240	576	122	Brampton	25	60	165	Wilson, O.		
78	Mundey	190	456	123	Nowell	16	38	166	Pearson, I.		
79	Mundey	200	480	124	Farley	30	72	167	Pearson, I.		
80	Mundey	260	624	125	Lewis, S.	32	76	168	Smith, Pa.		
81	Hyde Park Trading Co.	28	67	126	Nowell	15	36	169	Withdrawn		
82	Pepperell, Mrs.	35	84	127	Tayan, Miss C.F.	15	36	170	Pearson,		
83	Wolsey	85	204	128	Nowell	22	52	171	Nowell		
84	Maxwell, W.S.	130	312	129	Nowell	25	60	171a	Varga, M.		
85	Pepperell, Mrs.	45	108	130	Darnell	36	86	172	Waller, C.		
86	Lewis, S.	90	216	131	Allison	20	48	173	Smith, P.		
87	Jensen	40	96	131a	Walker, J.	100	240	174	Pacchera,		
88	Baer, H.	40	96	132	Walker, J.	48	115	175	Eademan		
89	Mundey	45	108	133	Graus Antiques	240	576	176	Nowell		
90	Demetter	105	252	134	Darnell	35	84	177	Quinneys		
91	Blandy	25	60	135	Walker, J.	58	139	178	Greffier		
92	Wolsey	145	342	136	Graus Antiques	220	528	179	Pearson,		
93	Lewis, S.	210	504	137	Walker, J.	45	108	180	Duncan,		
94	Mundey	120	288	138	de Waart	140	336	181	Smith, F.		
95	Bath, M.	55	132	139	Graus Antiques	180	432	182	Smith, I.		
96	Wolsey	95	228	140	Margetts, J.H.	50	120	183	Helverto		
97	Baer, H.	25	60	141	Temple Brooks	500	1200	184	Podd, A.		
98	Pepperell, Mrs.	65	156	142	Temple Brooks	48	115	185	Kerin		
99	Pepperell, Mrs.	25	60	143	Lord Murray of Newhaven	100	240	186	Gordon,		
100	Baer, H.	70	168	144	Ossowski	45	108	187	Lemmer		
101	Baer, H.	70	168	145	Brown, C.R.	75	180	188	Frederic		
102	Scott, L.	90	216	146	Dombey	85	204	189	Rubin		
103	Mundey	35	84	147	Jacobus & Co.	145	348	190	Hilliard		
104	Pepperell, Mrs.	30	72	148	Nowell	75	180	191	Wilson,		
105	Michaelis	32	76	149	Walker, J.	75	180	192	Withdra		
106	Bellman	55	132	150	Camerer Cuss	60	144				
107	Bellman	40	96	151	Walker, J.	75	180				
108	Allison	35	84	152	Darnell	110	264				
109	Pepperell, Mrs.	90	216	153	Dombey	420	1008				
110	Hyde Park Trading Co.	35	84	154	Floyd, J.P.	65	156				
111	Lewis, S.	10	24								

In accordance to reserves, the (who n

NOTE: For 2.40 dollars t