

GCR




Bonham

A Cotswold Legacy 1932 - 2008
The Property of H.W. Keil
Saturday 25 October 2008
To be sold on the premises

A Cotswold Legacy

1932 - 2008

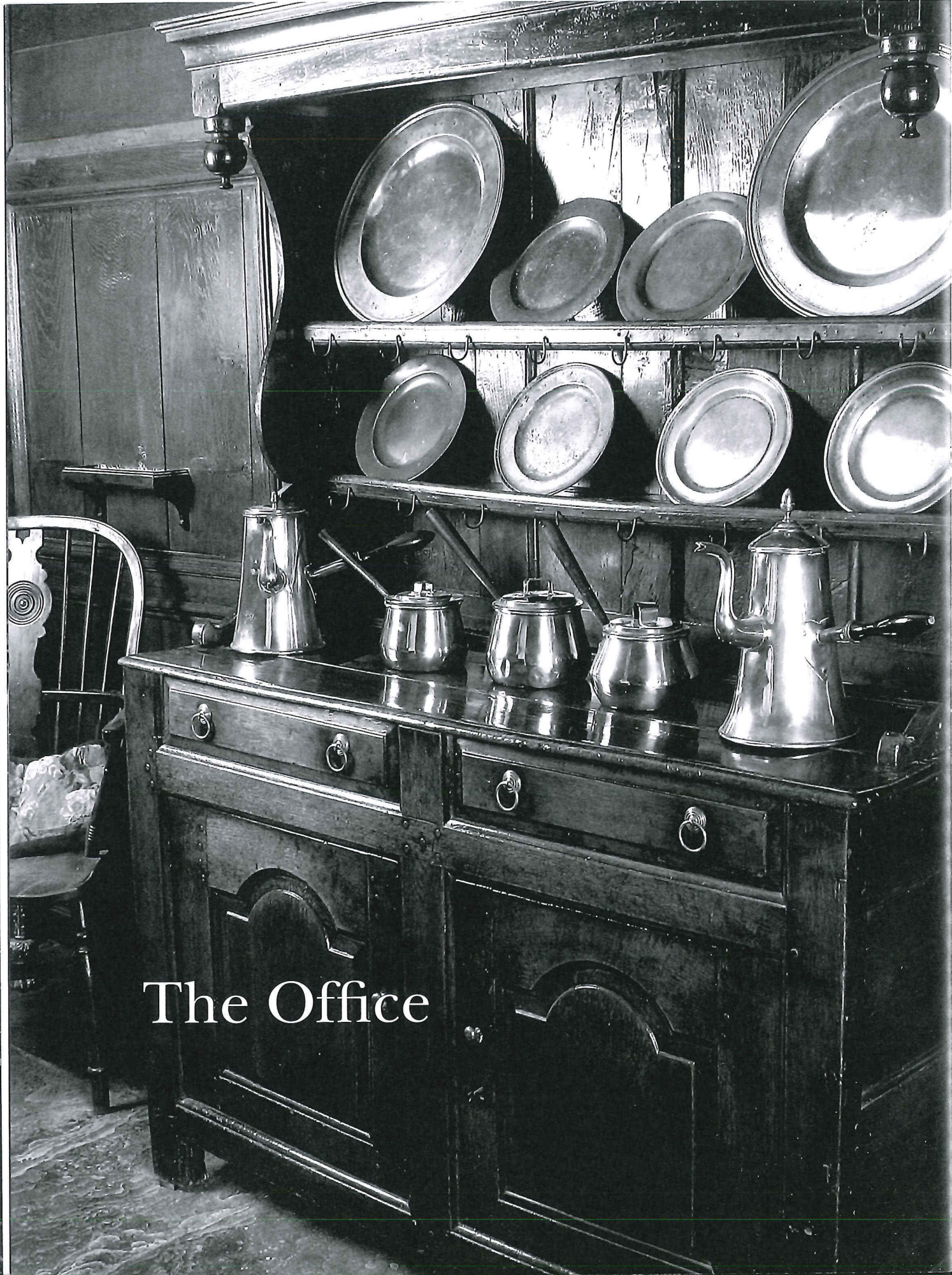


H. W. Keil, known as Bill, established his business in Broadway in the 1930s, trading in fine English furniture and works of art. It was this antique business that was amongst the first to give the Cotswolds its unique reputation for the selling of fine art and antiques that exists to this day.

Positioned at the top of the High Street, the four stories of Tudor House look down on the picturesque village of Broadway. Essentially built in the 17th century of typically Cotswold stone with leaded mullioned windows, oak floors and grand fireplaces, no better stage could have been conceived to display the very best English oak and vernacular furniture. Linked to the adjacent properties, the twelve showrooms now provide fitting settings for both Georgian and Regency furniture. Throughout the property, portraits and landscape oil paintings

complement the furniture, together with fine and interesting items of copper, brassware, iron and a significant collection of English pewter. A small library is found at the heart of the building with several hundred reference books covering most aspects of antique collecting and furniture history.

After the death of Bill, the management of the company passed firstly to his son Peter, and in recent years, to John, both of whom had run successful antique furniture businesses in Cheltenham and London respectively. Over the last seven years the business has had to be rationalised and the contents of the stores and other showrooms have already formed two sales. It is this sale, that can be previewed within Tudor House and sold adjacent to the premises, which marks the final chapter of a remarkable and influential business.



The Office

54

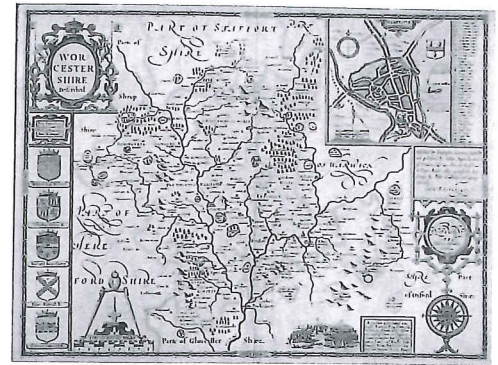
A George II oak canopy high dresser, circa 1740, North Wales

Of diminutive proportions, the panelled rack with projecting moulded cornice and pendant hung frieze above a pair of hook embellished shelves flanked by 'pot-belly' sides, the lower section with a pair of fielded drawers above a pair of arched fielded panelled cupboard doors, on extended stile supports, 133cm wide x 53.5cm deep x 184.5cm high, (52" wide x 21" deep x 72.5" high)

£5,000 - 8,000



54



56

55

A pair of William and Mary oak back stools, circa 1695, Cheshire/Lancashire

Each with arched fielded panelled back with arch shaped top rail embraced by rectangular section pyramid finial surmounted uprights, the panelled seat raised on block and baluster turned front legs joined by a baluster turned front stretcher and multiple rectangular section stretchers, 45.5cm wide x 50cm deep x 110cm high, (17.5" wide x 19.5" deep x 43" high) (2)

£1,000 - 1,500



55

56

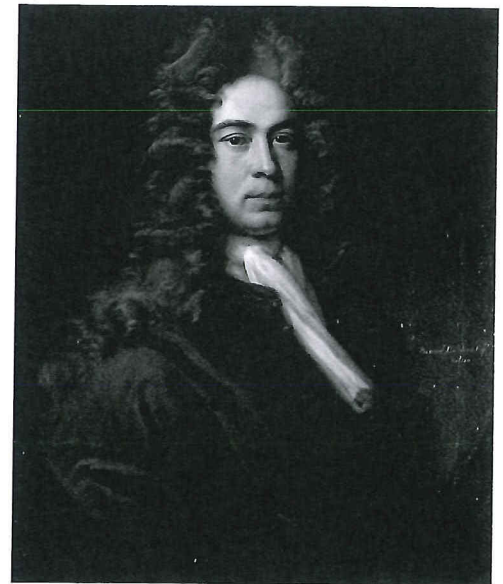
John Speed

Worcestershire described, hand coloured engraving, 40 x 53cm (15 3/4 x 20 7/8in), £200 - 300

57

Thomas Gibson

Portrait of Bernard Hutchings Esq, bust length, oil on canvas, 73 x 60.5cm (28 3/4 x 23 13/16in), £2,000 - 3,000



57

58

A 19th Century copper coffee pot

Of conical tapering form, the hinged lid with acorn finial with turned ebonised handle, 33cm wide, 31cm high (12.5" wide, 12" high) £100 - 150



59

59

A pair of embossed brass octagonal base candlesticks

Repoussé decorated with stylised fruit and spiral twist column, 26cm high, 21cm diameter, (2) £200 - 400

60

A small 19th Century copper coffee pot

With hinged lid and turned handle, 23cm wide, 19cm high (9" wide, 7" high) £80 - 120



60

61

A 19th Century ginger bread mould

The three carved sections each depicting a merchant with tall hat seated on a horse, 11cm wide, 46cm high (4" wide, 18" high) £150 - 220



61



The Pewter Room



216

216
 Attributed to Clarkson Stanfield
 Coastal scene,
 indistinctly signed and dated 1860, oil on canvas,
 37.5 x 60cm (14 3/4 x 23 5/8in).
 £1,200 - 1,800



219



221

221
 A 16th Century capstan brass bell base candlestick, possibly
 Spanish
 Of diminutive size with wide drip pan, height 8.5cm x diameter 8.5cm
 £150 - 250



224

222
 A pair of 18th Century turned fruitwood candlesticks
 Of diminutive size, on broad circular base, height 13cm. (2)
 £120 - 180



223

223
 A mid-18th Century tinder pistol or strike a light
 With shaped walnut pistol handle matchbox with hinged door, the steel
 mechanism with frizzen T-bar stand and candle support to one side.
 £400 - 600

217
 An 18th Century turned sycamore bowl
 Of shallow form with moulded rim and foot, diameter 43cm
 £100 - 150

218
 A carved silver giltwood candle stand
 With reeded, fluted and leaf carved column on tripod base, converted to
 a table lamp, height 68cm
 £120 - 180

219
 An 18th Century oak and elm spoon rack with drawer,
 The shaped 'swan-neck' back surmounted above two rails and a well,
 the under-drawer with brass ring pull, together with twelve brass and
 pewter spoons, 34 wide, 16cm deep, 60cm high (13" wide, 6" deep,
 23.5" high)
 £250 - 350

220
 A 17th Century veined marble mortar
 With brass pestle, 13cm high x 23cm diameter. (2)
 £50 - 70

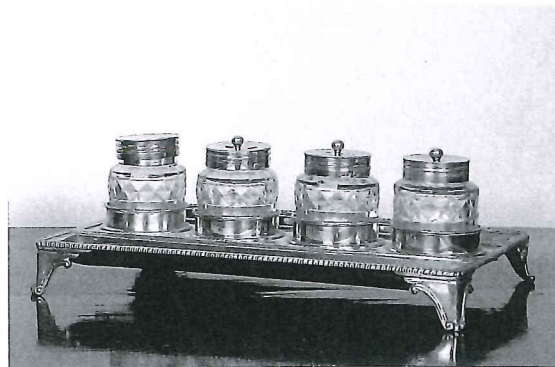
224
 A Victorian mother-of-pearl and abalone shell tea caddy
 With bowed front, the hinged lid enclosing two lidded compartments,
 on turned bun feet, 23 wide, 13cm deep, 12cm high (9" wide, 5" deep,
 4.5" high)
 £200 - 300

225
 A pair of 17th Century turned egg cups
 And other minor items of treen. (7)
 £200 - 300

226
 Two pairs of late 18th Century brass candlesticks
 Each with knopped column and circular foot. (4)
 £100 - 150



227



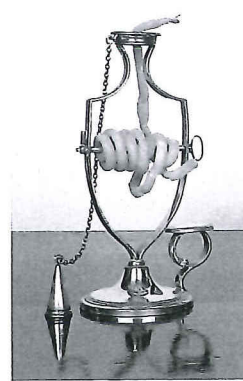
230



234



235



233

227
A pair of 19th Century silver plated wine coasters
And a single example, of circular form with pierced gallery, (3)
£100 - 150

228
A pair of silver plate wine coasters
With convex sides and gadrooned rim, (2)
£100 - 150

229
An early 18th Century silver todody ladle
With spiral twist ebony handle.
£50 - 70

230
A George III silver desk stand
With four bottles and two pen trays of rectangular form raised on
splayed scroll feet, London 1798
£400 - 600

231
A pair of mid-18th Century brass candlesticks
With side ejectors and circular base, together with a pair of octagonal
base candlesticks. (4)
£150 - 250

232
A 19th Century copper chocolate pot
Of circular waisted form with turned handle, 21cm tall.
£80 - 120

233
A 19th Century silver plate wax jack
On circular foot, 18cm tall.
£80 - 120

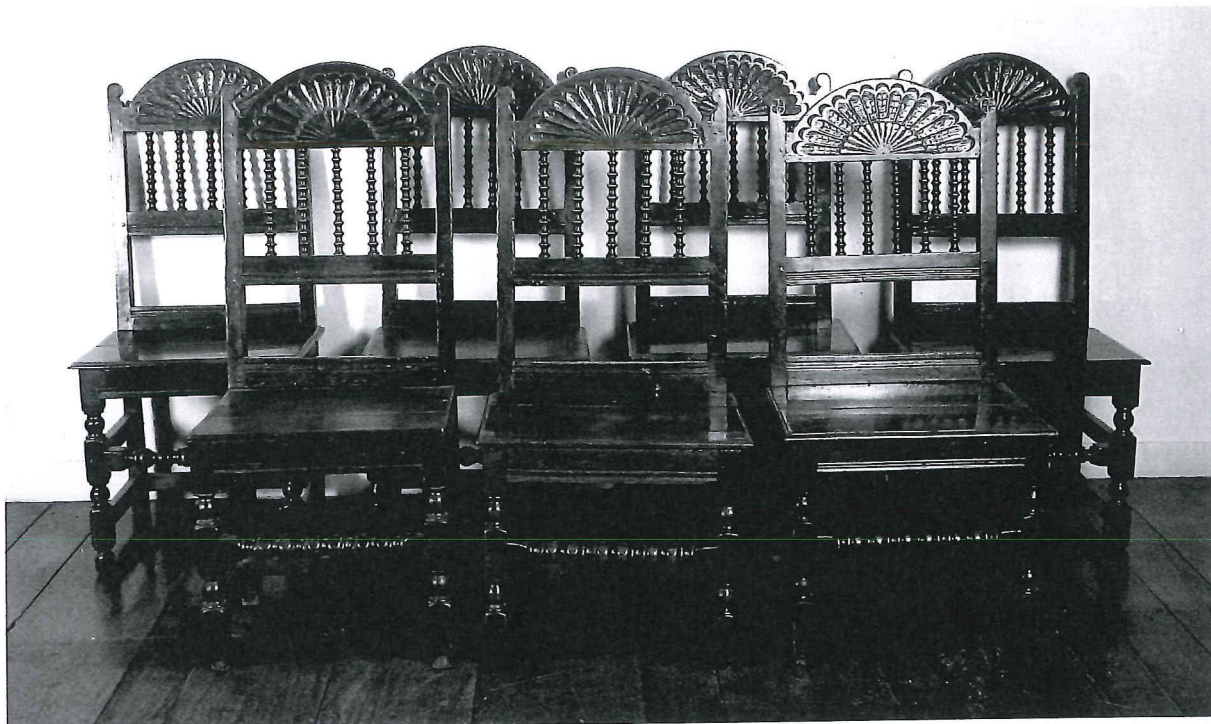
234
A Sheffield plate chamberstick
And a similar example, each with snuffer. (2)
£80 - 120

235
A 18th Century bronze spoon mould
19.5cm.
£150 - 200

236
A small 19th Century brass lace iron, together with an iron
example.
(2)
£70 - 100

The Yellow Room





380

379

A Charles I oak joint stool, circa 1640

The rectangular moulded top above channel moulded scroll cut friezes, raised on baluster and turned supports joined by rectangular section stretchers, 46cm wide x 29.5cm deep x 49.5cm high, (18" wide x 11.5" deep x 19" high)

£500 - 700

380

A set of seven Charles II oak joint backstools, circa 1680, South Lancashire/ North Cheshire

Each with arched nulled fan carved cresting above reel turned spindles, embraced by scroll finial surmounted uprights, the solid seat raised on block and ball turned front legs joined by a ball and reel turned stretcher and multiple rectangular section stretchers, 49cm wide x 39cm deep x 103.5cm high, (19" wide x 15" deep x 40.5" high) (7)

£7,000 - 10,000

These chairs are illustrated in David Knell, 'English Country Furniture', pl.76, p.324



377



398

392
A large copper riveted log bin
On three brass paw feet, 38cm high x 56cm
diameter.
£250 - 350

393
A 19th Century brass preserve pan
With swing iron handle, 24cm high x 38cm
diameter
£40 - 60

394
A wrought iron revolving hearth spit
With long handle and four legs, 56cm wide,
27cm deep, 17cm high (22" wide, 10.5" deep,
6.5" high)
£150 - 200

395
A pair of 18th Century Italian style gesso
altar candlesticks converted to lamps
The knopped column on tri-partite plinths,
(139cm high, 54.5" high), (2)
£300 - 500

396
A pair of cast iron fire dogs
With bearded male torso funnels, together
with a wrought iron fire basket, 45cm wide,
58cm high (17.5" wide, 22.5" high) (3)
£200 - 300

397
A turned early 19th Century treen bowl
12cm high x 37cm diameter
£120 - 180



396



397

398
A George II oak high dresser, circa 1750
The horizontally banded rack with projecting
cornice above three shelves, the lower section
with three fielded drawers above a waist
moulding and a pair of fielded panelled
cupboard doors centred by a conforming
panel, with base moulding, on extended stile
supports, 186.5cm wide x 55.5cm deep x
206.5cm high, (73" wide x 21.5" deep x 81"
high)
£4,000 - 6,000



392



394



560, 576

576

A Charles I oak refectory table, circa 1640

The cleated twin plank top above strapwork carved fringes, raised on a rising baluster, peg and ball legs joined by a channel moulded foot stretcher, 250cm wide x 71.5cm deep x 75.5cm high, (98" wide x 28" deep x 29.5" high)

£5,000 - 8,000

577

An 18th Century-style Dutch brass centre light

The ten branches of S-shape in two tiers, with central column of large sphere and drop finial, height 85cm x diameter 66cm

£400 - 600

578

A large copper and steel bound log bin

With swing handle, height 48cm x diameter 48cm

£120 - 180

579

A 19th Century copper coal scuttle

With swing handle and circular foot, 50 wide, 33cm deep, 45cm high (19.5" wide, 12.5" deep, 17.5" high)

£100 - 150

580

A pair of 17th Century iron firedogs

With caryatid finials of Gothic style, 47 wide, 52cm high (18.5" wide, 20" high) (2)

£250 - 350

581

Three similar wrought iron adjustable fire hooks.

(3)

£100 - 150

582

A reproduction wrought iron fire basket and a wrought iron fire screen.

(2)

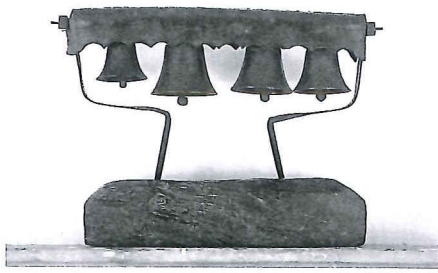
£150 - 200

583

A 19th Century copper 'helmet' coal scuttle

With swing handle and circular foot, 42 wide, 34cm deep, 34cm high (16.5" wide, 13" deep, 13" high)

£80 - 120



590



577



579, 580, 581, 582, 583

584

A pair of 18th Century Continental brass pricket candlesticks
With broad sconce and stepped circular base, *33cm high*, (2)
£250 - 350

585

A 19th Century twin-handled shallow copper pan
Together with a similar example. (2)
£150 - 200

586

A 19th Century copper twin-handled pan
Stamped 'E.W.', of cylindrical form, *height 20cm x diameter 32cm*
£70 - 100

587

An 18th Century Dutch or German brass alms dish
With embossed and stamped decoration, *diameter 44cm*
£250 - 350

588

A wrought iron centre light
Of circular form with four candle sconces,
£70 - 100

589

A pair of large Continental bell metal pricket candlesticks
With dished sconce and knopped column, on trefoil base, *height 69.5cm*, (2)
£300 - 500

590

A set of four late 18th Century horse bells
Mounted on a wooden block, *56 wide, 20cm deep, 40cm high (22" wide, 7.5" deep, 15.5" high)*
£120 - 180

591

A large brass bowl
With flared rim and booge, *height 10cm x diameter 45cm.*
£150 - 200

Pewter



592

A Georgian plain rim plate

Hallmarks to reverse, *diameter 9¼in*; two further plain rim plates of similar size; two European 18th century single reed plates, *diameter 9½in*; together with a European 'folded-rim' charger, *diameter 16¾in*, (6)
£60 - 80

593

An Irish plain rim dish, circa 1800

Touchmark and hallmarks to rear of Charles Clark(e), Waterford, (Cott 925), *diameter 16½in*.
£100 - 150

594

A Georgian single reed deep bowl, circa 1770

Touchmarks to rear of Stynt Duncomb(e), (Cott 1466), *diameter 17¾in*.
£180 - 250

595

A pair of late Georgian single reed dishes

Each with ownership initial MB to rim and worn touchmarks to rear, *diameter 16½in*.
£140 - 180

596

A Stuart triple reed dish, circa 1690

Hallmark to rim and touchmarks to rear of Edward Kent, London, (Cott 2713), ownership initials T.C. to rim, *diameter 15 1/8in*.
£150 - 250

597

A Georgian spire flagon, circa 1790

The tapering drum with mid fillet on flared foot, double dome knopped lid, open chair back thumbpiece and double scroll handle with fish-tail terminal, hallmark of Ingram & Hunt, Bewdley, to collar, (25.5cm high, 10" high)
£600 - 800

598

An early 19th Century straight sided French flagon

Litre capacity, lid stamped L.6.L., erect thumbpiece with numerous verification marks, angular handle, drum stamped 'Litre', touchmark of Humbert Leclerc, Lille, France, to underside, *height 22cm*.
£100 - 150

Literature: D. Stara, 'Pewter Marks of the World', No. 319

599

A Georgian plain rim dish, circa 1750

Touchmarks and hallmark to reverse of Samuel Ellis, (Cott 1547), *diameter 16¼in*.
£120 - 180



604, 665, 648

600

A Stuart triple reed charger, circa 1700

Hallmarks to rim and reverse of 'T Bayliss', *diameter 18 1/8in*
£300 - 400

601

A Georgian triple reed bowl, circa 1810

Bearing touchmark of Thomas Compton, London, (Cott 1063), *diameter 10 1/8in*.
£50 - 80

602

Two Georgian plain rim oval dishes, circa 1800

Each with letter 'S' wrigglework to rim, one being touchmark and hallmarks for Yates, Birch & Spooner, (Cott 5349), *diameter 17in and width 12¾in*, (2)
£100 - 150

603

A Flemish metric '5-litre' spouted measure, circa 1800

With cylindrical body, the lid engraved with monogram, solid thumbpiece and rectilinear handle, touchmarks to underside of base, *height 36.5cm*.
£400 - 600

For a similar example see P. Hornsby, 'Pewter of the Western World', pl.809, p.240.

604

A Georgian Scots pint tappit hen, circa 1800

The shouldered body of typical form with incised line decoration, lid with engraved initials 'I.M.' plowk mark inside, *height 28cm*.
£400 - 600



597



603



641, 663, 686, 610



640, 662, 614, 702, 673



633, 613, 645



696, 606

605

A set of six Georgian plain rim plates, circa 1810
Each bearing hallmark of T & W Willshire, Bristol, (Cott 5203), to rear, *diameter 15in.* (6)
£600 - 800

606

A Georgian ale jug, circa 1830
With fillet to bulbous spouted body, double dome lid, palmette thumbpiece and C-scroll overlap handle, *height 21cm.*
£200 - 300

Literature: For a similar example see V. Brett, 'Phaidon Guide to Pewter', p. 62

607

A Georgian single reed plate, circa 1775
Numerous initials and date '1775' to rim, touchmark to rear of Stynt Duncomb(e), Birmingham, (Cott 1466), *diameter 15in.*
£60 - 80

608

A single reed narrow rim deep bowl, circa 1790
Ownership initials stamped to side, traces of touchmark inside base, *diameter 10in.*
£60 - 80

609

A Georgian plain rim charger, circa 1770
Ownership triad to rim, hallmarks to rear, *diameter 18 3/8in.*
£120 - 180

610

A rare Stuart O.E.W.S. half pint, hammerhead baluster measure, circa 1670
Touchmark of I.W. (?) to collar, ownership initials S.B. to lid, simple curve handle with strut attachment, Cotterell guarantee label No.1330 to underside of lid, *height 13 cm*
£1,500 - 2,000

611

A single reed dish
Bearing hallmark of John Duncomb(e) to rear, *diameter 16 1/2in.*
£60 - 80

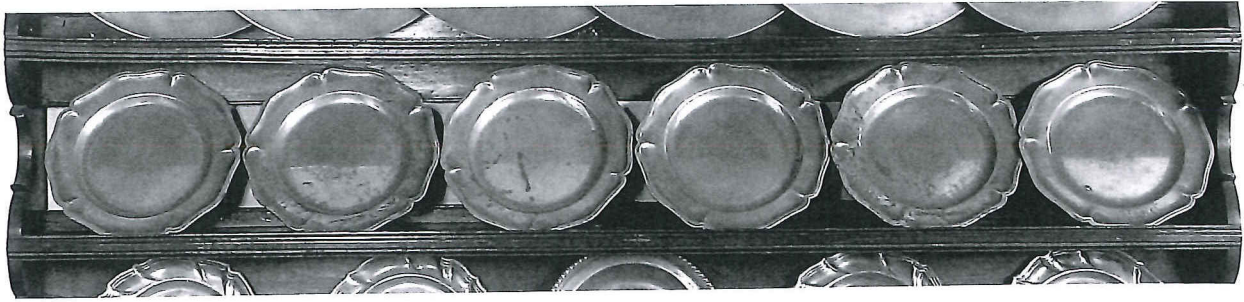
612

A pair of Georgian plain rim dishes, circa 1750
Each bearing ownership initials M.P. to rim and touchmark of Allen Bright, Bristol and Colwell, Herefordshire, (Cott 574), to rear, *diameter 15in.* (2)
£100 - 200

613

An 18th Century German wriggle-work Prisenkann flask
The seven sided spouted body decorated with stylised foliage, the circular lid with swing handle and touchmark, (post 1724) of Johann Ferdinand Renz, Munich.
£200 - 300

Literature: For similar decorated flasks see P. Hornsby, 'Pewter of the Western World', pl.859, pg.253 and for a similar spouted example pl.866, p.255.



619

614
A Georgian quart capacity Jersey measure, circa 1750
The plain body of typical form with heart shaped lid and twin acorn thumbpiece, simple curve handle with ownership initials 'I.A.', touchmark of John de St. Croix, (Cott. 1360), to underside of lid, 21cm high, 8" high
£250 - 300

615
A late Stuart triple reed dish, circa 1710
Hallmarks to rim and touchmarks to reverse of Edward Leapidge (Cott 2893), diameter 15in.
£120 - 180

616
An early Georgian inhaler, circa 1810
Touchmark of Compton, (Cott 1063), inside base.
£70 - 100

Used to treat chest infections. For an extremely similar example see. P. Hornsby, 'Pewter of the Western World', pl.294, p.121.

617
A pair of 19th Century European candlesticks
Each with gadrooned and beaded socket, on fluted and reeded stem, raised on a dome beaded base, touchmarks to underside, diameter 11cm x height 19cm, (2)
£70 - 100

618
A French capstan type salt, circa 1700
The shallow circular bowl raised on an incised line decorated spreading foot on an octofoil domed foot, diameter 8cm x height 6.5cm
£200 - 300

619
A set of six Georgian wavy edge plates, circa 1770
Each of five lobed double reeded form and bearing the full arms of Sackville Dukes of Dorset, touchmark of Thomas Chamberlain (Cott 873), to rear, diameter 9 3/4in, (6)
£800 - 1,200

Lionel Sackville, 10th Earl of Middlesex was created Duke of Dorset in 1720 and died in 1765. His son Charles died without issue in 1769 and was succeeded by his nephew John, the 3rd Duke, who died in 1799.



744, 615, 705



617, 618, 616

620
A late Stuart style gadroon edged plate
Bearing touchmark of Thomas Arnott, (Cott 113) to rear, diameter 8 1/8in.
£80 - 120

621
A set of four 18th Century German rococo wrythen wavy edged plates, circa 1780
Each bearing touchmark of Johan Casper Ritter, Innsbruck, to rear, diameter 9 1/2in., (4)
£80 - 120

622
A pair of Georgian plain rim bowls, circa 1800
Each with crest and coronet of Lord Ward to rim, touchmark to reverse of Yates, Birch and Spooner, Birmingham, (Cott 5349), diameter 9 1/2in, (2)
£80 - 100



623

623
An early Georgian plain rim plate, circa 1720
Of unusual size, arms engraved to rim, touchmark of Robert Nicholson, London, (Cott 3400) to rear, diameter 10 7/8in.
£50 - 80



627, 628, 670



660, 718, 629



625



659, 626

624
A large 18th Century European single reed deep bowl
Hallmarks to rear, *diameter 17½in.*
£100 - 150

625
A pair of Stuart triple reed chargers, circa 1695
Each with hallmarks to rim and touchmarks to reverse of Samuel Smalley, London, (Cott 4326), *diameter 18¼in, (2)*
£600 - 800

626
A French Normandy flagon, circa 1800
The typical shouldered body with incised line decoration on flared foot with 'heart' shaped lid and twin acorn thumbpiece, the simple curved handle engraved 'I - Lechartier', *height 26.5cm*
£200 - 300

627
A Georgian Scottish tappit hen, circa 1800
Mutchkin capacity, the body of typical shouldered form with incised bands, erect thumbpiece, *height 17.3cm*
£400 - 600

628
A Georgian Scottish tappit hen, circa 1800
Scots pint capacity, the body of typical shouldered form with incised bands, lid with engraved initials DB/BR, erect thumbpiece, plowk mark inside.
£400 - 600

629
A late 18th Century German rococo wrythen coffee pot
The spouted body of baluster form with knopped double dome lid, on flared foot, with ornate scroll handle, *height 25.5cm*
£100 - 150

Literature: for similar example see P. Hornsby, 'Pewter of the Western World', pl.527/528, p.172.

630

An early 19th Century North European wrigglework spouted flagon, dated 1832, possibly from Strasbourg

With dome lid and heart shaped spout, the flared drum decorated with stylised foliage centred by initials J.G.E. and date 1832 within a heart,
£150 - 200

Literature: For flagons of similar form see P. Hornsby, 'Pewter of the Western World', pp.208 - 211.

631

A Georgian single reed dish, circa 1740-50
Hallmark and touchmarks to reverse of Henry Little, London, (Cott 2948), diameter 16½in.
£70 - 100

632

A Georgian single reed charger
Indistinct hallmarks to rear, diameter 18 1/8in.
£60 - 80

633

A George III tulip-shaped tankard, circa 1800
O.E.W.S. quart capacity, monogram to body with double dome lid and open chair-back thumbpiece, double curve handle with fish-tail terminal, worn hallmarks to collar, possibly of Bristol origin, height 20cm.
£400 - 600

634

A Swiss 'Schenkkanne', dated 1827
The bulbous body with fillet to waisted neck, on flared foot, the 'heart' shaped lid with touchmark, the twin acorn thumbpiece stamped '1827', height 22cm
£100 - 150

Literature: For a similar example see P. Hornsby, 'Pewter of the Western World', pl.721, p.217.

635

An early 19th Century Normandy flagon,
The shouldered body with incised line decoration, the 'heart' shaped lid with twin acorn thumbpiece, height 19cm
£150 - 250

636

A pair of Victorian twin-handled footed cups, circa 1840
height 16.5cm, (2)
£80 - 120

637

A Stuart triple reed dish, circa 1680
Hallmarks to rim of I.T. (Cott 5977) and ownership initials AP, diameter 15in.
£200 - 300



642

638

A pair of Georgian single reed dishes, circa 1790
Indistinct touchmarks and London label to rear, diameter 13½in. (2)
£80 - 120

639

A Georgian O.E.W.S. half pint double volute measure, circa 1800
Of bulbous form, the handle with ball terminal and diamond attachment, height 12cm
£250 - 300

For a similar example of a 'bulbous' double volute baluster measure see P. Hornsby, 'Pewter of the Western World', pl.817, p.242.



635, 644, 634

640

A Georgian quart capacity Jersey measure, circa 1750
The plain body of typical form with heart shaped lid and twin acorn thumbpiece, single curve handle with ownership initials MRN, touchmark of John de St. Croix, (Cott 1360), to underside of lid, height 21cm
£250 - 300

641

A rare Stuart pint O.E.W.S. hammerhead baluster measure, circa 1670
Touchmark of C.B. (within beaded circle) to collar, ownership initials 'C.L.' stamped to simple curve handle, height 16.5cm
£1,200 - 1,800

642

A group of four Irish haystack measures
Quart, pint, half pint and noggin capacity, each bearing touchmark of Austen & Son, Cork, to underside of base. (4)
£300 - 500



699, 630



598, 649, 651



643

643
Four similar 19th Century bulbous measures

Quart, pint, half pint and gill capacities, each with fillet and multiple incised lines to body, each with Carlisle city verification mark to collar, possibly by Abbott, (4)
£80 - 120

644

An 18th Century Normandy flagon, French
The plain shouldered body with footed rim, the 'heart' shaped lid, with twin acorn thumbpiece, touchmark to lid and underside of base, together with a Rouen quality control mark dated 1742, 23cm high, 9" high)
£200 - 300

645

A late George III spouted Scottish flagon, circa 1770
The tapering drum with broad central fillet, twin lobed thumbpiece with hollow back, single curve handle with boot-heel terminal, touchmark in base of 'John Brown', Edinburgh, (Cott 628), height 28cm.
£500 - 700

646

A Georgian single reed dish, circa 1780
Ownership triad to rim, touchmarks to rear, diameter 16¾in.
£70 - 100

647

A Georgian single reed dish, circa 1770
Touchmarks and hallmarks to rear of 'Joseph Dafforn', diameter 16½in.
£80 - 120

648

A Georgian Scots pint tappit hen, circa 1800
The body of typical shouldered form with incised line decoration, engraved initials 'I.L. E.H.' to collar, plowk mark inside, height 29cm.
£500 - 800

649

An 18th Century French flagon
The collared tapering drum with incise line decoration, the 'heart' shaped thumbpiece with touchmark, twin acorn thumbpiece and single curve handle, height 24cm.
£200 - 300

650

A Stuart triple reed charger, circa 1690
With indistinct hallmarks to rim, cleaned, diameter 20in.
£200 - 300

651

A Victorian Scottish quart tulip shaped spouted measure
Stamped Rt. Galbraith, Glasgow, (Cott 1802), to collar, touchmark inside base, double scroll handle with fish-tail terminal, height 16cm.
£100 - 150

652

A Georgian single reed charger, circa 1720
Hallmarks to rim and touchmarks to reverse, see Cott 5923 and John Shorey (Cott 5923a), diameter 20¼in.
£400 - 600

653

A 17th Century European broad rim dish
With gentle booge and pronounced boss, touchmark to rim, ownership initials 'J.A.D.' incised to rear, diameter 12¼in.
£70 - 100

654

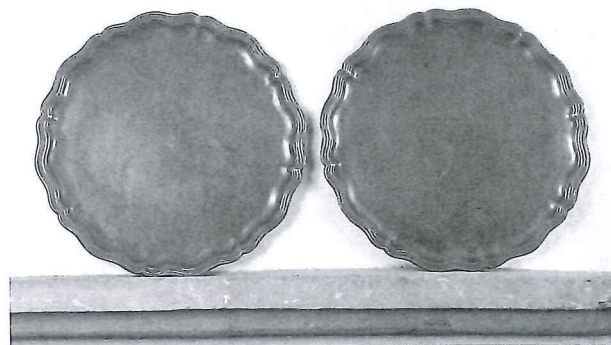
A Georgian O.E.W.S. pint double volute baluster measure
The body with twin incised lines, bud type handle with oval strut attachment, (lid and thumbpiece probably associated), 16cm high, 6" high)
£150 - 200

655

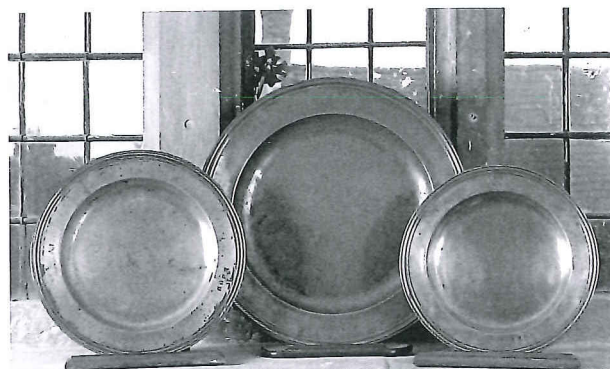
A set of six Georgian plain rim bowls
Each engraved 'Prestwold Hall' to rim, touchmark of Stynt Duncomb(e), Birmingham (Cott 1466) to rear, diameter 9½in., (6)
£150 - 250



661, 701, 639, 654



656

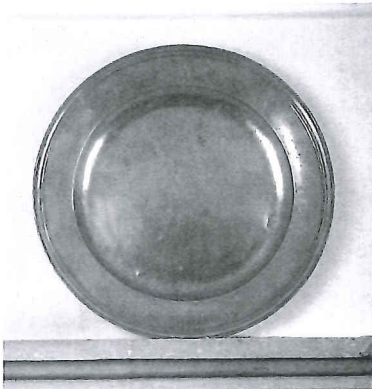


637, 707, 667

- 656**
An unusual pair of Georgian wavy edge salvers, circa 1770
Each of lobed reeded form, hallmark and touchmark of Humphrey Evans, Exeter, (Cott 1586), to rear, *diameter 10 1/4 in.*
£300 - 400
- 657**
A set of four Georgian plain rim plates, circa 1780
Each with ownership initials and touchmark of Stynt Duncomb(e) to rear, *diameter 9 1/4 in.* (4)
£70 - 100
- 658**
A pair of early 19th Century wavy edge plates, German
Each with five reeded lobes, touchmark to rear of Johann Georg Neef, Frankfurt, *diameter 9 3/4 in.*, (2)
£50 - 80
- 659**
A French Normandy flagon, circa 1800
The typical shouldered body with incised line decoration on flared foot with 'heart' shaped lid and twin acorn thumbpiece, *height 26.5cm*
£200 - 300
- 660**
A late 18th Century German rococo wrythen coffee pot, circa 1780-1800
The spouted body of baluster form with knopped dome lid, on a flared foot, simple curve handle, *height 19.5cm*
£80 - 120
- Literature: For a similar example with a similar spout see P. Hornsby, 'Pewter of the Western World', pl.527, p.172.
- 661**
A Georgian O.E.W.S. half pint double volute baluster measure, circa 1760
Plain body, the handle with ball terminal and diamond attachment, *height 12cm*
£250 - 300
- 662**
A Georgian Jersey quart capacity measure, circa 1780
With high fillet to body, heart shaped lid with twin acorn thumbpiece, incised ownership initials to simple curve handle, *height 21.5cm*
£250 - 300
- 663**
A hammerhead baluster measure
Capacity 3.5fl.oz, the body with three bands of twin incised lines, simple curve handle with strut attachment, *height 9.5cm.*
£300 - 400
- 664**
A single reed plate, circa 1710
Hallmarks to rim and touchmarks to reverse, *diameter 9 in.*
£60 - 80
- 665**
A Georgian Scots pint tappit hen, circa 1800
The shouldered body of typical form with incised line decoration, lid engraved with the initials 'R M K R', plowk mark inside, *height 28cm.*
£400 - 600
- 666**
A late 18th Century European single reed narrow rim dish
Touchmarks to rear, *diameter 13 1/2 in.*
£60 - 80
- 667**
A Stuart triple reed dish, circa 1680
Hallmarks to rim of John Cave, Bristol, (Cott 857), *diameter 13 1/2 in.*
£200 - 300
- 668**
A pair of Georgian plain rim plates, circa 1830
Each probably bearing touchmark of Watts and Harton, London, (Cott 4996), to rear, *diameter 9 in.*, (2)
£50 - 80



720, 674, 703, 719



675



676

669

A pair of Georgian plain rim dishes, circa 1730
Each with touchmark and hallmark to reverse of James Spackman, (Cott 4437) *diameter 16 1/4 in.*, (2)
£120 - 180

670

A Georgian Scottish tappit hen, circa 1800
Chopin capacity, the body of typical shouldered form with incised bands, erect thumbpiece, *height 23.5cm*
£400 - 600

671

A near pair of early 19th Century baluster knopped candlesticks
Each with ejector, (2)
£50 - 70

672

A pair of Georgian plain rim dishes, circa 1770
Each bearing the touchmarks of Stynt Duncomb(e), Birmingham, (Cott 1466), *diameter 14 7/8 in.*, (2)
£80 - 120

673

A Georgian Jersey half pint capacity measure, circa 1780
With incise line decoration to body, heart shaped lid and twin acorn thumbpiece, crown GR mark to collar, *height 14cm*
£200 - 300

674

A Stuart tazza, circa 1685
The circular plate with gadrooned edge raised on a spreading foot with gadrooned base rim, ownership triad ETI to plate, bearing touchmark of Robert Banks, Galway, (Cott 232), to underside, *height 8cm, diameter 20.5cm.*
£200 - 400

675

A rare Stuart triple reed charger, circa 1700
Hallmarks to rim and touchmarks to reverse of Sir John Fyers, (Cott 1791), *diameter 18 1/8 in.*
£500 - 700

Literature: The Journal of the Pewter Society, Autumn 1995, pgs.63-67 for a discussion of Sir John Fryer Baronet.

Sir John Fryer was the Master of the Worshipful Company of Pewterers in 1710 and 1715. He was one of only three pewterers to become Lord Mayor of London in 1720.

Very few pieces made by Sir John Fryer are recorded, including a spire flagon and a triple reeded rim plate, sold 'The Little Collection', Christie's May 2007, lots 70, 71.

A fine wrigglework charger by Fryer was bequeathed by Stanley Shemmell (Collection sold Bonhams, Chester, October 2006) to the Museum of London.

676

A Georgian oval plain rim dish with contemporary strainer,
Both with engraved monogram to rim, the strainer with pierced geometric design bearing the touchmark of A Nicholson, (Cott. 3397) to rear, *width 22 in., depth 17 in.* (2)
£200 - 300

Literature: for a similar example see P. Hornsby, 'Pewter of the Western World', pl.362, p.136.

677

A Georgian plain rim charger, circa 1770
Hallmarks and touchmark to reverse of Thomas Giffin II, London (Cott 1861), *diameter 18 in.*
£150 - 200

678

An early Georgian single reeded deep dish
Ownership triad to rim and indistinct hallmark to rear, *diameter 17 7/8 cm.*
£100 - 150

679

A large Stuart triple reed charger, circa 1690
Indistinct hallmarks to rim, touchmark to rear, *diameter 23 7/8 in.*
£800 - 1,200

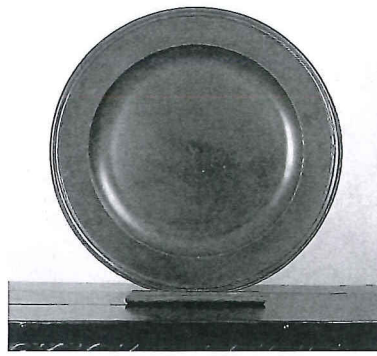
680

An 18th Century European flagon, possibly Hungarian
With flat and double domed lid, erect thumbpiece, scroll handle with touchmark, bands of incised decoration to flared body, *height 31.5cm.*
£150 - 200

Literature: for a similar flagon see P. Hornsby, 'Pewter of the Western World', pl.684, p.208 and pl.688, p.209.



687



679



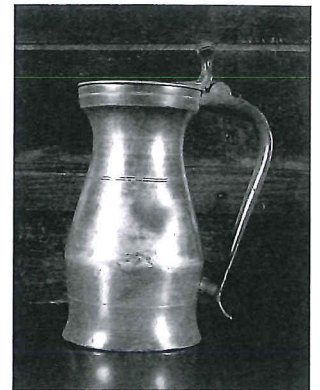
691



692



680



681

681

A George I half gallon O.E.W.S. bud baluster measure, circa 1720

The typical body with three bands of incised line decoration, replaced lid and thumbpiece attachment, repairs, height 26.5cm
£200 - 300

682

Two Irish haystack measures

Noggin and half noggin capacity, each bearing mark for Joseph Austen, Cork, (Cott 152), height 9.3cm and 7.7cm respectively, (2)
£50 - 80

683

A group of five 19th Century French straight sided measures

Litre to centilitre capacity, the body stamped with metric measurement and 'rations', various touchmarks to underside of base, (5)
£60 - 80

684

A pair of Georgian plain deep dishes, circa 1790

No marks, diameter 14¾in, (2)
£200 - 400

685

A set of six Georgian plain rim plates, circa 1720

Crest to rim, touchmark of Robert Nicholson, (Cott 3400), to rear, diameter 9 5/8in (6)
£250 - 350

686

A rare Stuart O.E.W.S. gill hammered baluster measure, circa 1670

Touchmark to collar, simple curve handle with strut attachment, height 10cm.
£1,200 - 1,800

687

A Georgian plain rim plate, circa 1720

The well engraved with large armorial device, touchmark of Thomas Ridding, diameter 9 5/8in, together with a late Georgian plain rim plate by John Langford, (Cott 2824), diameter 9¾in, and another plain rim plate, diameter 8¾in. (3)
£60 - 80

688

A late Georgian single reed plate

Touchmark and hallmark of Bush & Perkins, Bristol (Cott 740) to rear, together with another single reed plate, diameter 14¾in. (2)
£60 - 80

689

A group of Georgian plain rim plates

Mostly 9in. diameter; one bearing Irish touchmark of IN, seven other examples; together with a Georgian 11in. plain rim plate. (9)
£80 - 100

690

A group of mostly early Victorian measures

To include a quart truncated cone stamped Aulton Brewery to the underside, another pint example, a quart tulip shape by James Yates, Birmingham, two pint, one half pint and a gill bulbous measures, together with a twin handled footed cup.

691

A pair of candlesticks

Each on trefoil base, probably 18th century Dutch, height 44cm. (2)
£200 - 300

692

A deep bowl, circa 1800

With reeded edge, on foot rim, diameter 10in.
£60 - 80

693

A pair of pricket candlesticks

(2)
£200 - 300



698



698 (detail)

694

A triple reed dish, circa 1710
Hallmarks to rim of John Barlow, London (Cott 256), ownership initials 'B.W.' to rim, diameter 15in.
£180 - 250

695

A Georgian single reed plate, circa 1790
Worn touchmarks to reverse, diameter 15in.
£60 - 80

696

A Georgian gallon ale jug, circa 1830
With fillet to bulbous spouted body, double dome lid, palmette thumbpiece with C-scroll overlap handle, height 27cm
£400 - 600

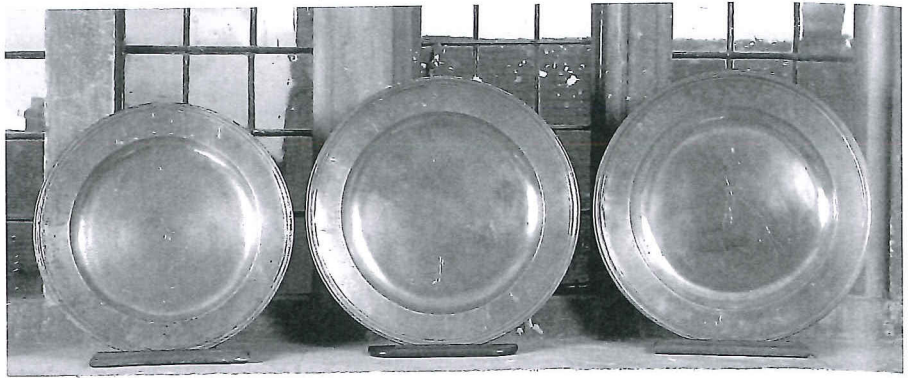
Literature: For a similar example see V. Brett, 'Phaidon Guide to Pewter', p. 62

697

A Britannia metal gadroon edged dish, circa 1800
No marks, diameter 9½in.
£80 - 120

698

A Stuart broad rim charger, circa 1670
With mantling to rim, along with four sets of initials, bearing hallmarks of S.B., (Cott 5464), touchmark to reverse, diameter 20in, rim diameter 3½in, (31%)
£800 - 1,200



706, 723, 704

699

An 19th Century European spirit flask
Of rectangular form with ribbed sides and relief decorated with meandering flora, swing handle to screw lid, on four flattened feet, 10.5cm wide x 7cm deep x 21.5cm high, (4" wide x 2.5" deep x 8" high)
£80 - 100

700

A Georgian plain rim dish, circa 1800
Bearing hallmark and touchmark of T & W Willshire, Bristol, (Cott 5203) to rear, diameter 14 7/8in.
£50 - 70

701

A Georgian O.E.W.S. quart double volute baluster measure, circa 1760
The body with incised line decoration, handle with diamond strut attachment, handle possibly later, height 20.5cm
£200 - 300

702

A Georgian Jersey pint capacity measure, circa 1780
With incise line decoration to body, heart shaped lid and twin acorn thumbpiece, crown GR mark to collar, height 16.5cm
£200 - 300

703

A 19th Century Dutch standish
With ink and pounce circular pots within dished rounded rectangular tray, on turned feet, hallmark to underside, 22.5cm wide x 12cm deep x 9cm high, (8.5" wide x 4.5" deep x 3.5" high)
£120 - 180

Literature: For similar example see P. Hornsby, 'Pewter of the Western World', pl.1164, p.338.

704

A Stuart triple reed charger, circa 1690
Hallmarks to rim and touchmark to reverse, hallmarks as per Cotterell OP 5432, diameter 20½in.
£400 - 600

705

A Stuart incised rim charger, circa 1680
The rim with twin incised lines to edge and hallmark of William Fly, (Cott 1705), touchmarks to reverse, diameter 18½in.
£300 - 400

706

A Stuart triple reed charger, circa 1690
Hallmarks to rim and touchmarks to reverse of William Howard, London, (Cott 2426), diameter 18½in.
£300 - 400

707

A Stuart triple reed charger, circa 1680
Touchmarks to rim and hallmarks to reverse of Lawrence Dyer, (Cott 1480), diameter 20in.
£400 - 600

708

An early Georgian plain rim dish
Touchmarks to reverse possibly of John Duncomb(e), Birmingham, (Cott 1465), diameter 17¾in.
£80 - 120

709

A half gallon Irish haystack measure
Bearing touchmark of Munster Iron Co. Cork, (Cott 3334), to underside, stamped ½ GALLON to body, height 25.5cm
£70 - 100

710

Two stand dishes
One of rectangular twin flap form, one flap stamped 'Grove', enclosing a pen tray and triple divided interior, on turned feet, height 6cm, width 21cm, depth 13cm, the other with hinged rectangular lid enclosing pounce pot and inkwell, with pen tray below, height 7cm, width 21cm, depth 9.4cm, (2)
£150 - 200

711

Four late Georgian single reed chargers, circa 1820
Each with ownership initials M I stamped to rim, worn touchmarks to reverse, diameter 16½in (4)
£200 - 400

712
A pair of Georgian plain rim plates, circa 1780
Each with touchmark and hallmark of Stynt Duncomb(e), Birmingham, *diameter 14³/₄in*; together with a *16¹/₂in* example, (3)
£200 - 400

713
An 18th Century European single reed dish
Ownership initials to rim, touchmarks to reverse, *diameter 14³/₄in*
£60 - 80

714
A pair of 18th Century European wavy edge plates
Each with five reeded lobes and a six lobe example with touchmark to rear, *diameter 9in*, (3)
£60 - 80

715
A group of Victorian measures
To include truncated cone, concave sided, tulip bulbous and footed examples, quart to half pint capacities, including one spouted example. (16)
£150 - 250

716
A miscellaneous group of pewter
To include a Georgian standish, an 18th Century Continental sauce boat, a large circular inkstand, a Victorian bulbous salt, a Britannia metal salt, a German plate with wrythen rococo edge, *diameter 14¹/₄in*, a funnel, a reproduction porringer, three small bowls, each with crest, two table spoons, a Victorian lidded entrée dish and an 18th Century narrow rim deep bowl. (15.)
£150 - 250

717
A Stuart triple reed charger
With crowned ownership triad and hallmark of I.G., (Cott 5619), to rim, touchmarks to rear, *diameter 20in*.
£600 - 800

718
A mid-18th Century German rococo wrythen ewer
The spouted body with mid fillet on a domed foot, ornate scroll handle, *height 19.5cm*
£70 - 100

Literature: For an extremely similar ewer, see. P. Hornsby, 'Pewter of the Western World', pl.799 p.238.

719
A large late 17th Century Dutch wrigglework beaker, circa 1690
Of flared form decorated with a pair of oval portraits of William and Mary within scroll work borders, touchmark to underside of base, *height 17.3cm*.
£500 - 800

720
A Georgian strawberry dish, circa 1750
The scallop edge dish with touchmark to underside, *diameter 8in*.
£250 - 350

721
A Stuart triple reed charger, circa 1670
Hallmarks to rim and touchmark to rear of I.P. (Cott 5835), *diameter 18¹/₄in*.
£300 - 400

722
An early Georgian plain rim charger
Crest to rim, unidentified touchmark and hallmarks to rear, *diameter 20³/₈in*.
£200 - 300

723
A Stuart triple reed charger, circa 1700
Hallmarks to rim of Martha Fly, (Cott. 1703a), *diameter 20in*.
£300 - 400

724
A Georgian single reed dish, circa 1730
Hallmark to rear of Edward Box, (Cott 538), *diameter 16¹/₂in*.
£60 - 80

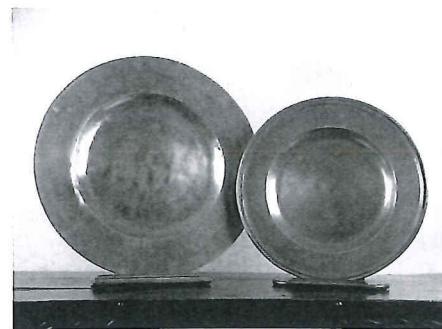
725
A Stuart triple reed dish, circa 1690
Hallmarks to rim and touchmark to rear of Edward Kent, (Cott 2714), *diameter 16¹/₂ in*.
£200 - 300

726
A 19th Century pint ale jug
With a pair of fillets to spouted bulbous body, stamped 1 pint to collar, simple curve handle, *height 11.5cm*.
£50 - 80

727
An impressive Stuart triple reed charger, circa 1680
With coat of arms and crossed palm leaf mantling to rim, four lion rampant lozenge hallmarks to rim, *diameter 22in*.
£1,200 - 1,800

728
A Georgian plain rim dish
Hallmarks and touchmarks to rear, *diameter 15in*.
£60 - 80

729
A Georgian plain rim deep dish, circa 1780
Hallmarks and touchmarks to reverse, (Cott 5725), *diameter 16¹/₄in*.
£80 - 120



733, 721



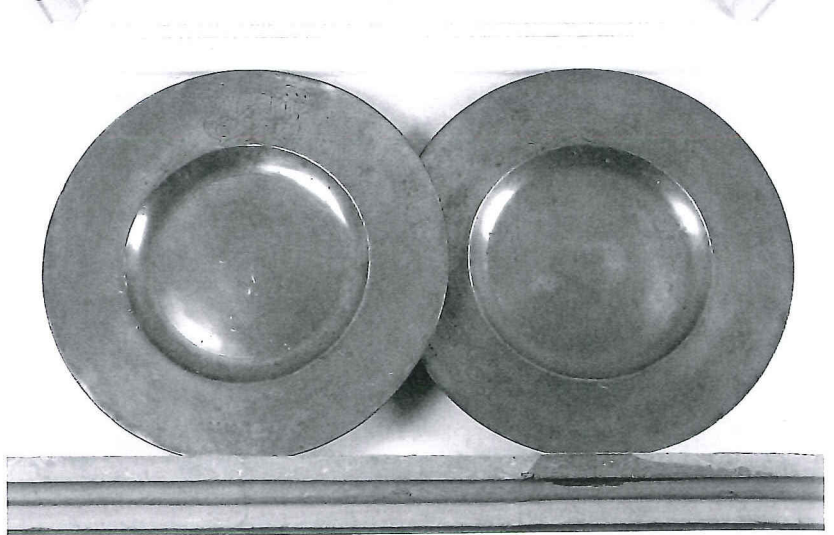
727 (detail)



727



730



731



734



731 (detail)

730
A Stuart flat lid tankard, circa 1680
The plain straight sided body with swan-neck handle ending in boot-heel terminal, the flat lid with denticulations and ownership initials 'J.V.', double C thumbpiece with cast diamond to rear, touchmark inside base and hallmark to lid, height 17cm.
£2,500 - 3,500

731
A rare pair of Stuart broad rim chargers, circa 1670
Each with engraved arms within mantling to rim, hallmarks to rim and touchmark to rear of T.B., (Cott 5468), diameter 20¼in, rim 4in (39%), (2)
£2,000 - 3,000

732
An early Georgian plain rim charger
Hallmark and touchmarks to reverse of John Duncomb(e), Birmingham, (Cott 1465), diameter 22in.
£300 - 500

733
A Stuart broad rim charger, circa 1660
Hallmarks to rim and touchmark to reverse of 'WH', (Cott 5694), cleaned, diameter 22in, and rim diameter 3¾in, (34%).
£500 - 800

734
An exceptionally large Stuart triple reed charger, circa 1690
Five 'eagle' hallmarks to rim and touchmark to rear, diameter 25¼in.
£800 - 1,200

735
A Georgian ale jug, circa 1800
Quart capacity, fillet to body and engraved Marston beneath a crown, grate to spout, double C overlap handle, Derby verification mark to collar, height 15cm
£100 - 150

736
Three Irish haystack measures
Pint, half pint and gill capacities, two bearing mark for Joseph Austen, Cork, (Cott 152), height 15.5cm, 12.5cm and 9.5cm respectively, (3)
£60 - 80

737
A group of six Victorian bulbous measures
Quart to gill capacity, some by Yates & Birch, Birmingham, (6)
£70 - 100

Prices realised

A Cotswold Legacy 1932 - 2008: The Property of H.W.Keil, 25 Oct 2008, Venue: Tudor House, Broadway

Sale No: 16977

Premium Included - no. Currency - GBP. Lot numbers which are omitted were withdrawn or did not sell.

We are not responsible for typographical errors or omissions.

Lot	Price	Lot	Price	Lot	Price	Lot	Price
1	1900	45	3200	82	550	120	400
2	1600	46	400	83	900	121	135
4	1900	47	240	84	750	122	95
6	550	48	650	85	8500	123	600
7	1200	49	75	86	400	124	1300
8	2100	50	380	88	500	125	1100
9	170	51	1900	89	3800	126	110
10	900	52	180	90	1200	127	4000
11	2400	53	260	91	950	128	300
12	7000	54	8800	92	1500	130	50
13	5800	55	1600	93	5000	131	3100
14	900	56	340	94	160	132	750
15	3000	57	1400	95	3000	133	750
17	450	58	90	96	550	134	380
18	950	59	280	97	100	135	190
19	420	60	280	98	2300	136	700
20	280	61	260	99	260	137	1500
21	50	62	80	100	300	138	8200
22	1000	63	160	101	110	141	2700
23	200	64	80	102	700	142	260
24	100	65	190	103	380	143	800
25	120	66	100	104	200	144	200
26	600	67	220	105	260	145	340
27	420	68	550	106	190	146	1300
29	150	69	280	107	240	147	8000
30	350	70	240	108	320	148	5600
32	40	71	90	109	95	150	1000
33	180	72	900	110	300	151	3200
34	160	73	1000	111	110	152	2700
35	12000	74	750	112	130	153	1500
36	80	75	240	113	340	154	2000
38	1200	76	190	114	5000	156	1700
39	450	77	340	115	300	157	400
40	1700	78	340	116	350	158	250
41	1700	79	1800	117	10000	159	300
43	3800	80	380	118	80	160	150
44	1300	81	700	119	600	162	3200

Prices realised

A Cotswold Legacy 1932 - 2008: The Property of H.W.Keil, 25 Oct 2008, Venue: Tudor House, Broadway

Sale No: 16977

Premium Included - no. Currency - GBP. Lot numbers which are omitted were withdrawn or did not sell.

We are not responsible for typographical errors or omissions.

Lot	Price	Lot	Price	Lot	Price	Lot	Price
163	6500	201	880	240	280	277	210
164	50000	202	160	241	2000	278	420
165	650	203	40	242	2200	279	720
166	650	204	380	243	720	280	4200
167	1800	205	100	244	850	281	520
168	2500	206	75	245	1800	282	2600
169	8000	207	85	246	95	283	1600
170	4000	208	480	247	880	284	400
171	10000	209	6000	248	1000	285	90
172	21000	210	170	249	180	286	350
173	2300	211	90	250	170	287	150
174	2200	212	5200	251	280	288	120
175	800	213	580	252	160	289	1300
176	1600	215	1900	253	100	290	700
177	1900	216	1200	254	420	291	220
178	340	217	60	255	35	293	240
179	1500	218	190	256	2600	294	1200
180	950	219	1000	257	350	296	400
181	750	220	110	258	700	297	2200
182	400	221	320	259	700	298	200
183	2500	222	360	260	580	299	1400
184	180	223	280	261	420	300	1300
185	100	225	160	262	85	301	150
186	80	226	120	263	170	302	1450
187	520	227	190	264	70	303	1850
188	4200	228	160	265	100	304	8600
189	1400	229	85	266	1600	305	420
190	1900	230	680	267	350	306	1400
191	3800	231	150	268	1450	308	400
192	340	232	130	269	400	309	170
193	1100	233	140	270	2900	310	200
194	3400	234	110	271	300	311	360
195	3000	235	160	272	400	312	3400
197	1000	236	95	273	800	313	2100
198	150	237	200	274	1600	314	300
199	1000	238	45	275	550	316	1000
200	650	239	1700	276	720	317	1900

Prices realised

A Cotswold Legacy 1932 - 2008: The Property of H.W.Keil, 25 Oct 2008, Venue: Tudor House, Broadway

Sale No: 16977

Premium Included - no. Currency - GBP. Lot numbers which are omitted were withdrawn or did not sell.

We are not responsible for typographical errors or omissions.

Lot	Price	Lot	Price	Lot	Price	Lot	Price
318	750	355	620	393	70	430	130
319	1900	356	800	394	240	431	160
320	420	357	1100	395	420	432	600
321	1000	358	400	396	780	433	150
322	1000	359	5200	397	220	434	750
323	140	360	160	398	3100	435	180
324	220	361	400	399	420	436	380
325	170	362	3500	400	5600	437	700
326	80	363	2500	401	120	438	200
327	75	364	4600	402	130	439	300
328	20	365	5800	403	200	440	220
329	90	366	7800	404	170	442	550
330	620	367	350	405	110	443	1400
331	90	368	410	406	420	444	400
332	90	369	425	407	40	445	60
333	140	370	140	408	220	446	550
334	40	371	300	409	450	447	1400
335	70	372	340	410	260	448	3000
336	50	373	2900	411	900	449	220
337	110	374	1500	412	700	451	130
338	2300	375	1500	413	1100	452	450
339	90	376	2100	414	200	453	1500
340	380	377	3000	415	170	454	3200
341	580	378	3000	416	850	455	2100
342	170	379	850	417	240	456	2500
343	550	380	5500	418	240	457	700
344	24000	381	4200	419	340	458	3600
345	6200	382	2900	420	600	460	360
346	3600	383	6000	421	150	461	6200
347	2300	384	1100	422	70	462	750
348	450	385	150	423	550	463	20000
349	8400	386	1500	424	600	464	1600
350	2400	387	160	425	160	465	60
351	1050	388	2300	426	150	466	420
352	1300	390	25	427	220	467	2400
353	1300	391	200	428	2900	468	2600
354	3400	392	520	429	2000	469	2200

Prices realised

A Cotswold Legacy 1932 - 2008: The Property of H.W.Keil, 25 Oct 2008, Venue: Tudor House, Broadway

Sale No: 16977

Premium Included - no. Currency - GBP. Lot numbers which are omitted were withdrawn or did not sell.

We are not responsible for typographical errors or omissions.

Lot	Price	Lot	Price	Lot	Price	Lot	Price
471	700	511	120	553	2900	595	120
472	1600	512	90	554	650	596	150
473	420	513	140	555	600	597	1100
474	1400	514	160	556	4500	598	65
478	320	515	220	557	3000	600	500
479	1200	516	220	558	900	601	50
480	1500	518	1300	559	3400	602	200
482	600	519	100	560	1800	604	300
483	1500	520	320	561	400	605	400
484	800	523	170	562	3400	606	190
485	1300	524	130	563	550	607	40
486	850	525	75	564	1800	608	85
487	280	526	350	565	3800	609	85
488	1500	527	480	566	2100	610	1050
489	200	528	400	568	85	611	55
490	420	529	3400	570	1500	612	150
491	1100	531	1600	571	120	613	150
492	950	532	600	572	120	614	240
493	100	533	4000	573	600	615	95
494	150	534	900	574	160	616	110
495	220	535	1500	575	110	617	70
496	180	536	400	576	7000	618	130
497	55	537	650	577	650	620	95
498	60	538	320	578	340	621	80
499	300	539	1200	579	100	622	55
500	75	540	650	580	300	623	100
501	45	541	500	581	75	624	70
502	380	542	1800	583	120	626	200
503	5000	543	480	584	280	627	400
504	420	544	400	585	100	628	300
505	200	545	5800	586	50	629	110
506	360	546	3600	587	280	630	140
507	100	547	2800	588	160	631	65
508	400	548	360	589	300	632	90
509	200	549	1500	590	240	633	380
510	320	550	4200	592	95	634	200
510A	70	552	950	594	130	635	140

Prices realised

A Cotswold Legacy 1932 - 2008: The Property of H.W.Keil, 25 Oct 2008, Venue: Tudor House, Broadway

Sale No: 16977

Premium Included - no. Currency - GBP. Lot numbers which are omitted were withdrawn or did not sell.

We are not responsible for typographical errors or omissions.

Lot	Price	Lot	Price	Lot	Price	Lot	Price
636	90	676	150	726	40	765	280
637	90	678	75	727	1200	766	140
638	90	679	850	728	60	767	320
639	180	680	130	729	65	768	450
641	800	681	280	730	1850	769	1000
642	540	682	110	732	200	770	100
643	160	683	120	733	550	771	600
644	300	687	50	734	2600	772	420
645	550	688	95	735	80	773	1200
646	80	689	140	736	220	774	400
647	80	690	85	737	110	775	800
648	520	691	220	738	50	776	2300
649	220	692	170	739	90	777	550
650	150	694	150	740	90	778	2000
651	130	695	65	741	75	779	320
652	260	696	280	742	120	780	1300
653	160	698	850	743	150	781	300
654	200	699	60	744	100	782	600
655	140	700	40	745	520	783	650
657	95	701	220	747	1250	784	110
658	55	702	340	748	350	785	1100
659	140	704	350	749	700	786	240
660	60	707	300	750	1100	787	160
662	440	708	80	751	420	788	110
663	200	709	260	752	360	789	140
664	50	710	260	753	300	790	340
665	500	711	230	754	1600	791	380
666	40	712	170	755	1600	792	70
667	150	713	55	756	750	793	70
668	50	715	180	757	580	794	80
669	80	716	130	758	1400	795	260
670	420	718	90	759	130	796	60
671	65	719	500	760	700	797	560
672	85	720	200	761	600	798	1300
673	380	721	200	762	420	799	70
674	150	723	240	763	1700	800	320
675	360	724	70	764	500	801	150

Prices realised

A Cotswold Legacy 1932 - 2008: The Property of H.W.Keil, 25 Oct 2008, Venue: Tudor House, Broadway

Sale No: 16977

Premium Included - no. Currency - GBP. Lot numbers which are omitted were withdrawn or did not sell.

We are not responsible for typographical errors or omissions.

Lot	Price
802	70
803	70
804	450
805	260
806	160
807	320
808	220
809	100
810	100
811	30
812	210
813	70
814	130
815	70
816	70
817	40
818	260
820	70
822	70
823	70
824	100
825	40
826	520