

S O T H E B Y ' S
FOUNDED 1744

SUMMERS PLACE, BILLINGSHURST, WEST SUSSEX RH14 9AD - (0403) 783933

SALE RESULTS

STERLING =
1.00 = .182 FF

OAK AND COUNTRY FURNITURE, TEXTILES, METALWORK AND WORK

SF
DM
LIRE
YEN

21 JUN 94

(SALE NUMBER BH4843)

SALE STATUS: CLS

1. THE FOLLOWING LOTS WERE SOLD AT THE PRICES STATED.
2. LOT NUMBERS WHICH ARE OMITTED REPRESENT ITEMS WHICH WERE WITHDRAWN, PASSED, OR UNSOLD AS OF THE PUBLICATION OF THIS LIST.
3. PRICES INCLUDE THE BUYER PREMIUM.

LOT	STERLING	LOT	STERLING	LOT	STERLING
0499	552	0552	218	0593	299
0500	437	0554	471	0594	368
0501	448	0555	115	0595	299
0502	713	0555A	299	0596	368
0503	759	0555B	287	0597	299
0504	264	0555C	149	0598	218
0505	1,552	0556	264	0599	379
0506	57	0558	149	0600	299
0507	368	0559	207	0601	391
0508	207	0562	230	0602	425
0509	172	0563	92	0603	379
0510	322	0565	368	0604	310
0512	161	0566	264	0605	287
0513	184	0568	920	0606	414
0514	115	0569	598	0607	322
0518	241	0571	529	0608	552
0518A	46	0572	529	0610	172
0519	299	0574	322	0611	103
0520	195	0574A	172	0612	230
0521	552	0575	149	0613	431
0522	805	0575A	345	0614	333
0523	207	0576A	138	0615	195
0524	471	0577A	207	0616	368
0528	253	0579	184	0619	2,530
0529	230	0583	3,220	0620	4,140
0531	172	0584	207	0621	299
0532	161	0586	207	0622	161
0533	598	0586A	126	0623	356
0535	299	0586B	126	0624	184
0538	782	0586C	86	0625	149
0539	195	0587	264	0626	80
0546	575	0588	483	0627	690
0547	713	0589	471	0628	195
0549	161	0590	483	0629	1,380
0550	345	0591	299	0630	276
0551	218	0592	356	0631	793

529 **A GEORGIAN BOXWOOD GUINEA SCALE CASE**, 18th Century, with stamped rounded rectangular case with hinged cover bearing trade label of Henry Neale and with brass and steel scales stamped H.N. and three weights, the case 13.5cm.; 5¼in wide £200–300

530 **A LARGE LIGNUM VITAE PESTLE**, English 17th Century, with tapering cylindrical handle and bulbous end, 35cm.; 13¾in £180–220

531 **A PARQUETRY WOOD RECTANGULAR GAMES BOARD**, early 19th Century, inlaid with different cubes of wood within raised gallery, 21cm.; 8¼in square £150–200

532 **THREE FRUITWOOD KNITTING SHEATHS**, North Country early 19th Century, one in the form of a rifle with bone and brass piqué inlay, 26cm.; 10in; two with chip carved plants and figures, and a relief carved coconut half-shell, circa 1800, carved with a heart and flowering plants, 11.5cm.; 4½in (4) £150–250

533 **AN ENGLISH TREEN MEASURING STICK**, 1724, of tapering rectangular form chip-carved overall with rosettes and tooth edges, the handle with three balls in a rope-twist frame with ball finial, dated 1724 and with ownership initials, 84cm.; 2ft 9in; and another similar with a handle finial, (2) £300–400

534 **A DUTCH WOOD GINGERBREAD MOULD**, early 19th Century, carved in relief with a column of five figures on horses, 50cm.; 19½in tall; and another with two pairs of figures, 24cm.; 9½in (2) £150–200

535 **A FRENCH BOXWOOD SPOON**, 18th Century, hinged at joint of bowl and handle, the handle carved in relief with Christ on the cross and dated 1714, 14cm.; 5½in £120–180

The spoon is presumably a travelling Christening spoon used by a country priest

(For colour illustration see page 43)
536 **A COPPER AND WOOD SAILING BOAT WEATHERVANE**, late 19th Century, the two masted vessel with six sails and deck rail and shaped hull, 101cm.; 3ft 4in high overall £500–800

(For colour illustration see page 43)
537 **A HIGH-RELIEF CARVED PAINTED WOOD PANEL**, probably Continental early 19th Century, carved with a procession of figures through a town in an oak leaf and acorn border, the reverse with inscription label relating to the Gunpowder plot, 42 by 67cm.; 16½ by 26½in overall £400–600

(For colour illustration see page 43)
538 **AN AMERICAN CARVED AND PAINTED WOOD EAGLE WALL PLAQUE**, early 19th Century, carved in relief above the 'Union' flag with fourteen stars, 43cm.; 17in £400–600

Provenance: formerly on loan to the John Judkyn Memorial Museum, Freshford Manor, Bath, and exhibited in touring exhibitions of American Art around the country. The John Judkyn Memorial who have links with the American Museum in Bath restored the eagle to its original polychrome finish and removed later layers of paint some 10 to 14 years ago.

539 **A PRESSED PAPERWORK RELIEF PICTURE**, late 19th Century, depicting mounted Arab horsemen on a Tiger hunt, glazed composition frame, 44 by 53cm.; 17½ by 21in including mount £200–300

(For colour illustration see page 43)
540 **AN EDWARDIAN DISPLAY CABINET OF A TAVERN SCENE**, circa 1910, depicting painted composition wood and card figures outside a tavern, glazed rectangular frame, 38cm.; 15in wide overall £300–500

541 **THREE CUT CARD SILHOUETTE PICTURES**, French late 18th Century, each painted and cut-out with street figures in a brick arched frame, 24cm.; 9½in £200–300

542 **FOUR NAILSEA GLASS ROLLING PINS**, 19th Century, including a blue glass pin painted with gilt poems and cartouches, 79cm.; 2ft 7in; a smaller blue and gilt pin; and two white glass rolling pins, (4) £200–300

543 **A PAIR OF PAINTED WOOD DECOY DUCKS**, 41cm.; 16in and 36cm.; 12in £150–200

544 **A TÔLE PEINTE HANGING LETTER RACK**, 19th Century, with arched back, three compartments and drawer below, 31cm.; 12in wide £200–250

545 **A CARVED WOOD NAÏVE GROUP**, mid 19th Century, in the form of a pair of figures on a domed base carved in relief with animals supporting a lobed dish top, possibly for holding candles, 35cm.; 14in £400–500

546 **A RELIEF CARVED SHIP'S NAMEPLATE PANEL**, 18th/19th Century, depicting a press gang in a tavern, the inscription indistinct, traces of paint, 59cm.; 23½in wide £250–400

(For colour illustration see page 43)
547 **A SWISS WALNUT 'FOX' COAT HOOK**, circa 1880, with glass eyes and wearing hunting coat and hat set with horn leg hooks, 46cm.; 18in £250–350

(For colour illustration see page 43)
548 **A PAIR OF EMBOSSED CARD PICTURES OF PIGEONS**, mid 19th Century, each bird embossed from the rear set in a barn interior in gilt-wood frame, 29.5 by 37cm.; 11½ by 14½in overall £400–600

BRITISH AND CONTINENTAL PEWTER

(For colour illustration see page 43)
549 **A GEORGIAN TWIN HANDLED LOVING CUP**, circa 1760, the tapering body with an engaved top band and a raised lower band with scroll side handles with spade terminals on tuck-in foot, 19cm.; 7½in diam across the handles; illustrated £150–250

550 **A COLLECTION OF TAVERN MUGS**, second half 19th Century, comprising six similar pint mugs with tapering reeded sides and scroll handles, and two similar quart mugs, (8) £150–200

551 **MISCELLANEOUS TAVERN MUGS AND MEASURES**, 19th Century, comprising six assorted tavern mugs of different styles and capacities, seven assorted measures (two with brass rims), an inkwell, a strainer and an ice-cream container, (16) £150–200

552 **A CHARGER**, English early 18th Century, indistinct touches, rim restored, 45cm.; 18in; two hot-water plates, a pair of plates by Henry Little, 18th Century, 22cm.; 8½in; a Continental plate and two porringers, (8) £150–200

553 **A PAIR OF BRITANNIA METAL CANDLESTICKS**, circa 1840, each with octagonal base and baluster stem engraved with foliage, 23cm.; 9in; and a Norwegian lidded tankard, early 20th Century, with ball thumbpiece and claw and ball feet, 15cm.; 6in; two English quart measures and a pint mug, (6) £250–350

554 **A SET OF FIVE PLATES BY THOMAS SPENCER**, early 18th Century, each with plain rim with ownership initials M.L. touch adverso (O.P.4453), 22cm.; 8¾in; a set of six plates, mid 18th Century, each with touch of a unicorn issuing from a crown, (O.P.5639 & 6047), 23cm.; 9in; another plate and two reproduction plates, (14) £300–400

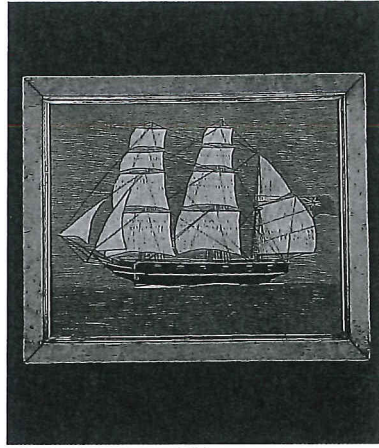
555 **AN OVAL TOBACCO JAR AND COVER BY RICHARD PITTS**, circa 1780, the domed cover with vase finial above body with beaded rims, inner liner, 13.5cm.; 5¼in £100–150



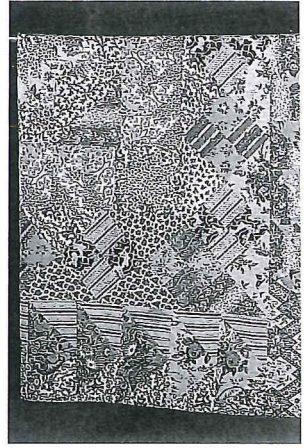
358



358



364



390



407



437 506



508 395



413 412A 414



467 (2) 440



443 436 433



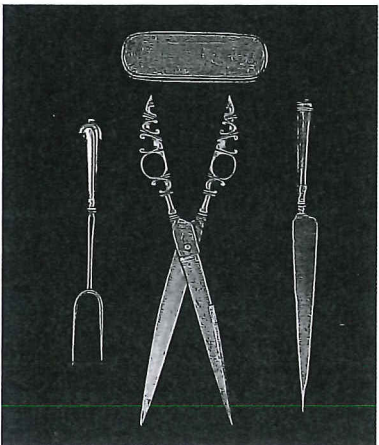
444 461



455 495 498 499 451



500



527 520 524 527



540



563

555A A CHARGER BY NEHEMIA CLOUDSLEY, circa 1700, the triple reeded rim with 'hallmarks' and ownership traïd initials, touch adverso (O.P.991), 51.5cm.; 20¹/₄in £300-400

555B THREE GRADUATED MEASURES WITH BRASS RIMS, English, late 19th Century, each of straight sided tapering form with reeded bands, the Quart by Davidson with tavern inscription underneath, the pint and half-pint by Loftus, (3) £150-200

555C THREE BALUSTER MEASURES, late 18th/early 19th Century, comprising a Scottish lidded baluster with ball thumbpiece, 9.5cm.; 3³/₄in; an English lidless baluster, 10cm.; 4in; and a North Country or Scottish lidless baluster with ball handle terminal, 9cm.; 3¹/₂in £200-300

556 FIVE ASSEMBLED GRADUATED POT BELLIED LIDLESS MEASURES, circa 1830 and later, from Quart to Gill with WM IV and VR stamps, various makers, £200-300

557 A PAIR OF PEWTER CANDLESTICKS, circa 1830, each with domed circular base and baluster stem, 25cm.; 9³/₄in; and a similar smaller pair, polished and restored, (4) £200-250

558 AN UNUSUAL PINT POT TAVERN MUG BY ROBERT STANTON, early 19th Century, with ebonised wood handle, hallmarks to rim (O.P.4483), two quart pot bellied lidless baluster measures and a similar pint measure, (4) £150-250

559 A COLLECTION OF TAVERN MUGS AND MEASURES, 19th Century, comprising three quart pot bellied lidless measures, a similar ½ pint measure, and five straight sided tapering tavern mugs including a quart, two pint and two ½ pint, (9) £180-220

560 A COLLECTION OF MISCELLANEOUS PEWTER, 19th Century, including four quart tavern mugs, three pint tavern mugs, assorted styles, four baluster measures, one conical measure, and a pair of Britannia metal beakers, (14) £180-180

561 A PAIR OF PEWTER CANDLESTICKS, circa 1830, with domed beaded circular base, push-eject and baluster stem, 25cm.; 10in; and another pair with ball and baluster stem, polished and restored, (4) £200-250

562 A DOMED LID ALE JUG, early 19th Century, of usual squat pear shaped form with palmette thumbpiece and front spout, 19cm.; 7¹/₂in £200-250

563 A COLLECTION OF SEVEN PEWTER PEN BOXES, mid 19th Century, each with hinged lid, and miscellaneous items including a ladle, a plate, a twin handled bowl, a pair of Chinese vases, two peppers and an oval salt, (15) £100-150

564 A SET OF THREE GRADUATED TAVERN MUGS, each of straight sided tapering reeded form with a number of capacity verification stamps, from quart to ½ pint; and two similar pint tavern mugs each with tavern inscription under base, (5) £150-200

565 A JERSEY LIDDED MEASURE, late 18th Century, of usual pear shaped form with heart shaped lid and twin acorn thumbpiece, stamped with a crowned G.R. 11cm.; 4¹/₄in; and another similar smaller, stamped twice with a crowned G.R. 8cm.; 3¹/₄in (2) £200-300

566 A SET OF THREE GRADUATED TAVERN MEASURES, circa 1840, each of straight sided tapering form with thick brass rims comprising quart, pint and half-pint, inscribed 'Imperial measure' and with VR stamps and ownership details under base £150-200

(For colour illustration see page 43)

567 A GERMAN PEWTER TWIN BRANCH OIL LAMP, early 19th Century, in the form of a standing figure on a domed base inscribed and dated 1815, 21.5cm.; 8¹/₄in £300-400

(For colour illustration see page 43)

568 AN ASSEMBLED SET OF SEVEN GRADUATED MEASURES BY JOSEPH AUSTEN OF CORK, circa 1830/40, comprising gallon, ½ gallon, quart, pint, ½ pint, gill and ½ noggin, touches under base, condition variable, the largest 30cm.; 12in £600-900

569 A SIMILAR SET OF SIX ASSEMBLED GRADUATED MEASURES, circa 1830/40, from ½ gallon to ½ noggin, the largest 25cm.; 10in £400-600

570 A SIMILAR SET OF FIVE ASSEMBLED GRADUATED MEASURES, circa 1830/40 from ½ gallon to noggin, £350-500

571 TWO PAIRS OF DISHES BY CHARLES CLARKE OF WATERFORD, circa 1800, each with plain rim, polished, touch adverso (O.P.925), 42cm.; 16¹/₂in £250-400

(For colour illustration see page 43)

572 A GEORGIAN DOMED LID TANKARD, circa 1720, the tapering body with scroll handle and ram's horn thumbpiece, handle terminal broken, 24cm.; 9¹/₂in £400-600

573 A PAIR OF ROCOCO SWIRL BASE CANDLESTICKS, German, circa 1750, each with swirled baluster stem and broad domed base, 18cm.; 7in; and a pair with circular bases and plain baluster stems, 19th Century, (4) £200-300

(For colour illustration see page 43)

573A TWO SIMILAR SWISS OR EAST FRENCH LIDDED FLAGONS, early 19th Century, each with heart shaped cover above reeded neck and bulbous body, one with acorn thumbpiece, the other with erect thumbpiece, 24cm.; 9¹/₂in £300-400
One illustrated.

574 A WATER CISTERN, French, late 18th Century, corner mounted with shaped front and domed cover with urn finial, tap at base, 42cm.; 16¹/₂in £200-300

574A MISCELLANEOUS PEWTER, 19th Century, including an oil lamp with urn reservoir and three spouts on tall stem, 36cm.; 14in; an inkwell and pounce pot, a mould in the form of a sheep, a glass and pewter twin bottle oil and vinegar set and three graduated food containers (7) £150-250

575 THREE ASSORTED WATER BOTTLES, Continental, 19th Century, comprising an ovoid flask, 30cm.; 11³/₄in; a globular flask with female masks and loop handle, 20cm.; 8in; and another (3) £150-250

(For colour illustration see page 43)

575A TWO SIMILAR NORMANDY LIDDED FLAGONS, early 19th Century, each with heart shaped lid and twin acorn thumbpiece above shouldered body, 28 & 27cm.; 11 & 10¹/₂in £300-400
One illustrated.

576 A SET OF SIX METRIC MEASURES, French, 19th Century, each with straight sides and angular side handle, from litre to centilitre, an English Quart tavern mug with spout and a Britannia metal lidded trophy mug, (8) £200-300

(For colour illustration see page 43)

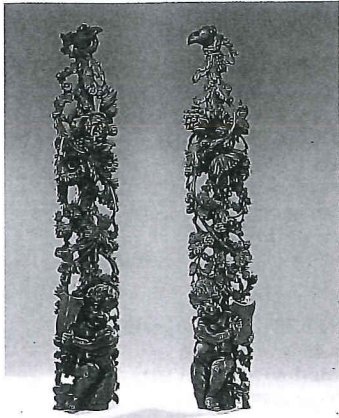
576A A NORMANDY LIDDED FLAGON, early 19th Century, the heart shaped cover with twin acorn thumbpiece above shouldered body, 29cm.; 11¹/₄in £150-250

577 A PAIR OF WATER BOTTLES, Southern Europe, circa 1800, of bulbous form with loop side handles with human mask terminals rising to tall cylindrical spouts with screw-on tops with chains, 31cm.; 12in £200-300

(For colour illustration see page 43)

577A A DOMED LID JUG, probably Flemish, 19th Century, with front spout and pierced cover, 16cm.; 6¹/₄in; and a lidded flagon, probably Swiss, with twin acorn thumbpiece and shouldered body, 18cm.; 7in (2) £200-300

578 A TWIN HANDED TUREEN AND COVER, circa 1800, the tapering body on domed foot with angular side handles and domed cover with acorn finial, stamped F. CANE, 27cm.; 10³/₄in £200-250



505



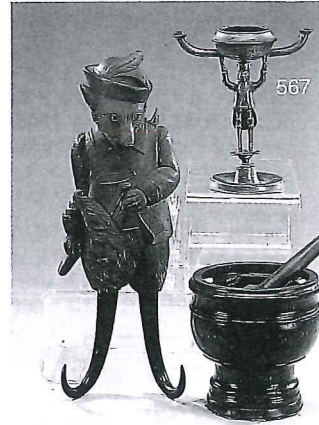
511

512

509

525

510



547

517



522

521



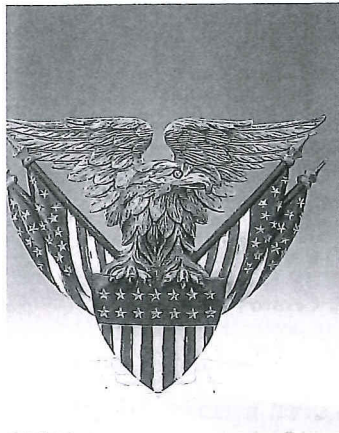
526



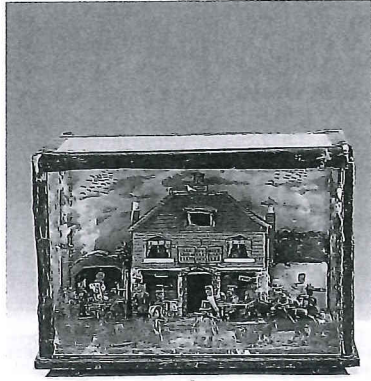
536



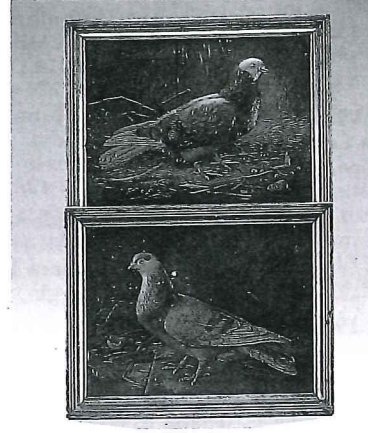
537



538



540



548



568

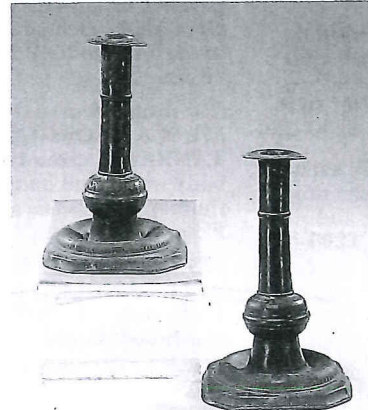


572

549



577a



583



613

619

613

579 **MISCELLANEOUS PORRINGERS AND ECUELLES, Continental, 18th/19th Century**, including a two handles ecuelle bowl with rococo cast handles, 31cm.; 12in diam; a similar smaller ecuelle; a pair of Italian flat eared porringers; a wavy edged oval sauce bowl by C. H. Schneider in S. Waldt, 23cm.; 9in; a pierced ear porringer; and a single eared porringer bearing the touch of George Bacon of England, (7) £200-250

580 **THREE SIMILAR OVAL REEDED RIM DISHES, Continental, late 18th Century**, one later embossed with a shield, 37cm.; 14½in; one by G. B. Metra; and another similar smaller. 32cm.; 12¼in; together with two reeded wavy edged bowls, both 18th Century, (5) £300-400

581 **A BROAD REEDED RIM DISH, circa 1680**, engraved with a coat-of-arms, condition poor, 37cm.; 14½in; a Continental scale plate, 18th Century, with gadrooned raised rim, touch of the maker W. G. 31cm.; 12in, a smaller plate by Sartoris with raised rim, 24cm.; 9½in; a set of three plates by Gioseppi Mireti, 23cm.; 9in; and a dish by Della Biancha, (7) £350-500

582 **A COLLECTION OF SEVEN WAVY EDGED PLATES AND DISHES, Continental, 18th Century**, including a pair with Grenoble touch marks, 36cm.; 14¼in; a pair with the touch of a phoenix, 26cm.; 10in; and a set of three by the maker A.L., 22cm.; 8½in £400-600

(For colour illustration see page 43)

583 **A PAIR OF BALL KNOPPED CANDLESTICKS, English circa 1690**, each with canted square base with an ovolo moulded grease depression gadrooned on the outside, supporting a tapering cylindrical stem with a low ridged ball knob and upper swelling moulded band and drip tray connected to the stem by a lobed band, both with W.M.W triad initials under base, one depressed with consequential cracking around base ring, 16.5cm.; 6½in £2,500-3,500

For a similar candlestick see Michaelis: 'Antique Pewter of the British Isles' fig 47

584 **A ROCOCO EWER, German circa 1750**, the flared shaped fluted body with bulbous base and scroll handle threaded onto a waisted socle and domed foot, 21cm.; 8¼in; and a George IV Quart baluster tavern mug with spout and scroll handle, (2) £200-300

585 **A SWISS HEXAGONAL FLASK, circa 1800**, with ring top and screw-on cover above a body with a tall spout with hinged flap engraved with flowers and initialed A.L., 34cm.; 13½in; and a French brass rococo candlestick circa 1750, with fluted baluster stem and domed base, 24cm.; 9½in (2) £350-500

586 **A TRIPLE-REEDED RIM DISH BY ROBERT CLOTHYER, circa 1700**, hallmarks and ownership triad to rim, touch adverso, (O.P.989), split around booge, 43.5cm.; 17½in £150-200

586A **COTTERELL: 'OLD PEWTER', Charles Tuttle 1963**, Peal: 'More Pewter Marks', 1976; The Worshipful Company of Pewterers Catalogue 1968 and supplementary catalogue 1979; Tardy: 'Poincons d'Etain'; Stara: 'Pewter marks of the World'; and two further, (8) £80-120

586B **MISCELLANEOUS PEWTER BOOKS**, including Homer & Hall: 'Provincial pewterers'; Woolmer: 'Pewter of the Channel Islands'; Price: 'Old Base Metal Spoons'; and further books and Exhibition catalogues and pamphlets including titles by Michaelis, Massé, Peal and others (23) £80-120

586C **GENTLE & FIELD: 'English Domestic Brass', Paul Ellek, 1975**; Schiffer: 'The Brass Book', Homer: 'Five Centuries of base metal spoons' and four further books or pamphlets, (7) £80-120

BRASS & COPPER

The following lots comprise the Vera Muggeridge collection of West Country Friendly Society Poleheads. They date from the late eighteenth Century to the third quarter of the nineteenth Century and were used by the Friendly Societies as poleheads on their annual feast days. Although Friendly Societies, which were self-help societies, were found all over England, the use of brass poleheads is unique to the West Country. It is probable that most were made in Bristol which had a thriving brass industry and were made with specific designs for specific Friendly Societies. Margaret Fuller's book 'West Country Friendly Societies' 1964, is the standard text, and identifies almost all of the Muggeridge poleheads. For this reason the Margaret Fuller catalogue No is used in the following cataloguing using the abbreviation M.F.

(For colour illustration see page 47)

587 **THE HAMBROOK HORSE, Gloucestershire**, flat brass with engraved detail, incised member's number '9' and maker 'Hale & Co, Bristol', (M.F. 152), 20cm.; 8in £200-250

(For colour illustration see page 47)

588 **GILWERN, Monmouthshire**, modelled as a scythe, and Cullompton, Devon, modelled as a cast hand, 15cm.; 6in; (M.F. 260 & 261), (2) £200-300

589 **SHERBORNE, Dorset**, pierced S.O.F.S. 1761, 18cm.; 7in; Chelynych and Doultling, Somerset, 38cm.; 15in; West Monkton, Somerset and Goathurst, Somerset, (M.F.25, 81, 273, 292) (4) £200-300

(For colour illustration see page 47)

590 **HUNTSPILL, Somerset**, modelled as a crowned oak leaf; Frampton Cotterell, Glos, incised with member's number '26'; Bishop Sutton, Somerset and Kingsbury Episcopi, Somerset, (M.F. 121, 15, 51, 284) (4) £300-400

591 **HENSTRIDGE, Somerset, 24cm.; 9½in**; Street, Somerset, Curry Rivel, Somerset and Combe St. Nicholas, Somerset, the two former as flat brass the latter two rounded brass, (M.F. 12, 135, 213, 262) (4) £200-300

(For colour illustration see page 47)

592 **GLASTONBURY, Somerset**, carved wood and brass modelled as an acorn (M.F.298), and another unidentified modelled as a sickle, (2) £150-200

(For colour illustration see page 47)

593 **HIGH LITTLETON, Somerset**, flat brass incised with name 'Edwd Dunford M', 26cm.; 10¼in; Shirehampton, Glos; Zeals, Wilts and Stapleton, Bristol, the three former flat brass the latter as a bell, (M.F.9, 33, 43, 249), (4) £200-300

(For colour illustration see page 47)

594 **THE PANBOROUGH LION, Somerset**, flat brass with engraved detail, (M.F. 154), 24cm.; 9½in £200-250

(For colour illustration see page 47)

595 **THE CHEDZOY LION, Somerset**, flat brass with engraved and raised detail, (M.F. 156), 23cm.; 9in £200-250

(For colour illustration see page 47)

596 **HALBERTON, Devon**, modelled as clasped hands in a crowned circle, 21cm.; 8¼in; West Pennard, Somerset; Officer's brass incised with initials I. P.; Ansford and Ditchat, Somerset, incised with initials J. B.; and one unidentified of an eagle on a column, 21cm.; 8¼in (M.F.267, 56, 94) (4) £200-300

(For colour illustration see page 47)

597 **DOWLISH WAKE, Somerset**, pierced with initials D.F.S. 24cm.; 9½in; Studley, Wilts, in the form of a sunburst, Portishead, Somerset and Wrington, Somerset, (M.F. 42, 166, 6, 192) (4) £200-300

(For colour illustration see page 47)

598 **WEST STOUR, Dorset**, flat brass engraved with a ship, 31cm.; 12in; and Siston, Glos, modelled as a horseshoe, (M.F. 95 & 108) (2) £150-200

(For colour illustration see page 47)

599 **WEMBDON, Somerset**, modelled as a swan on a ball, 22cm.; 8½in; Long Ashton, Somerset; Westbury-sub-Mendip, Somerset, initialed R.F. and Axbridge, Somerset, (M.F.278, 137, 31, 265) (4) £200-300