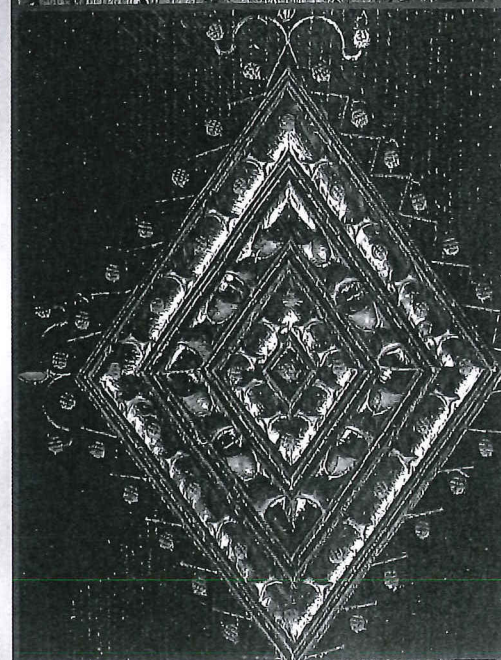
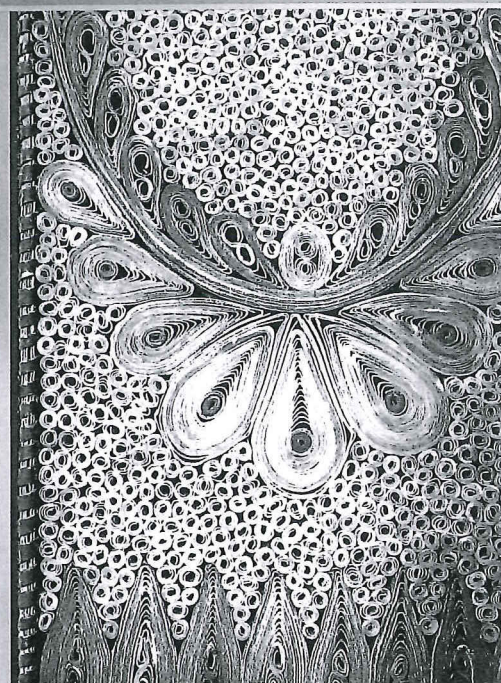
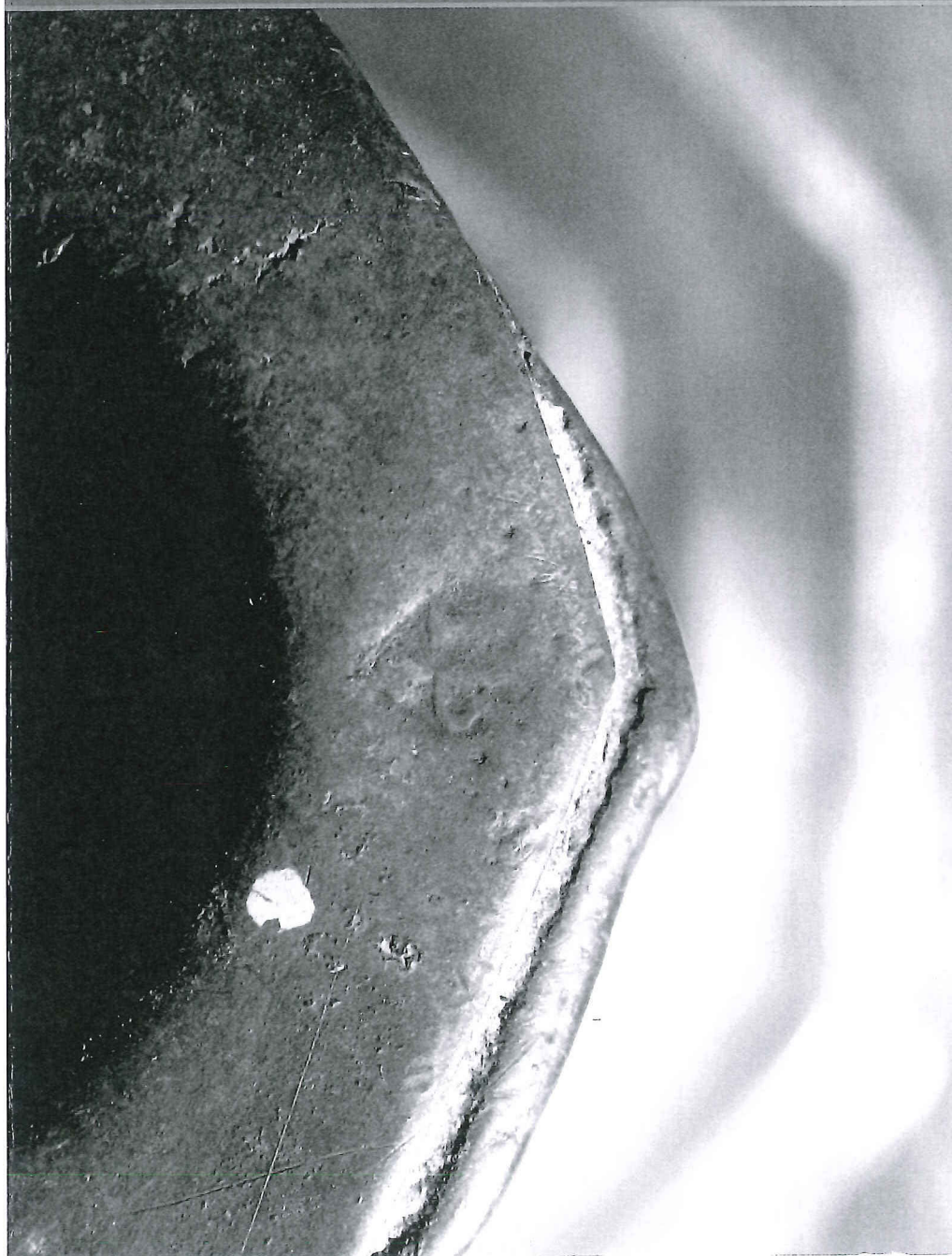


GBP

Bonhams¹⁷⁹³

Good British Pottery,
Fine Oak Furniture, Pewter
and Related Works of Art

Tuesday 8 and Wednesday 9
January 2008
Chester



Fine Oak Furniture, Pewter
and Related Works of Art
Wednesday 9 January 2008
at 10am
Lots 300- 731





302



303

Pewter



304

300

A pair of half pint beakers, circa 1800 Each with hallmark of Yates, Birch & Spooner, Birmingham (Cott 5349), another by Sir George Alderson; another with touchmark in base; together with a pair of 19th Century footed beakers, a pair with incised lines to body, another with single mid fillet and a half pint footed cup. (10)
£100 - 150

301

An early 19th Century standish The twin hinged rectangular lid containing an ink and pounce divided interior and a quill compartment, on domed feet, together with a capstan inkwell, another, a pair of salts modelled as swans, a pair of 19th Century pheasant hearth decorations, small quantity of flatware, (a lot).
£100 - 150

302

An 18th Century lidless baluster measure of gill O.E.W.S. capacity, circa 1740 S-shaped handle with ball terminal and diamond attachment. 8.4cm high 3" high)
£180 - 220

303

A mid 18th Century footed plate The 10½in diameter reeded plate raised on a domed waisted foot. 3cm high 1" high)
£250 - 350



307

304

A 19th Century Scottish Chalice Flared bowl, engraved 'ASSote CONn MIDD-CALDER', stepped stem on dome foot. Height 22.5cm
£180 - 220

305

A pair of 19th Century petal base type candlesticks Each with tapering stem on domed base, loaded. Height 25.5cm
£80 - 120

306

A two handled cup, circa 1820 Single fillet on body, S-shaped handles with ball terminal, domed foot.
£100 - 150

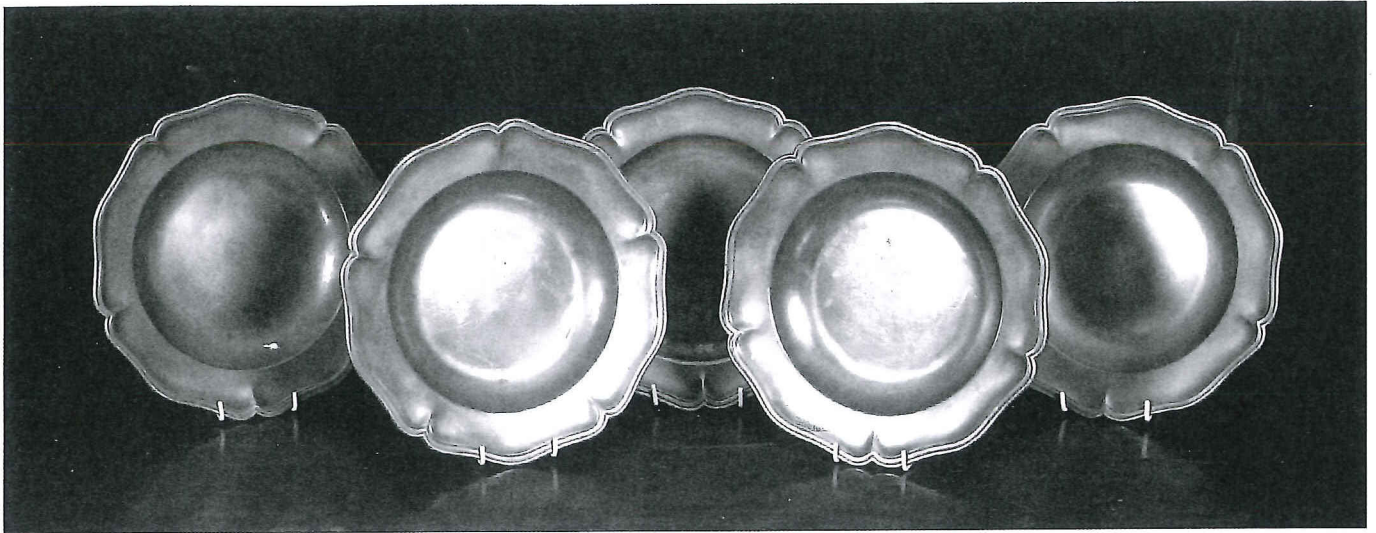
A similar cup illustrated Cotterell' Old Pewter ITS Makers and Marks' plate XXXIVc. page 102.

307

A pair of early 19th Century bulbous salts Probably by George Alderson (Cott 38), (2). diameter 3in.
£100 - 150

308

An 18th Century German box The circular knopped lid with anthemion style engraved border, similar decoration to drum, touchmark to underside of box, height 7.3cm a French example, the screw lid with worn inscription, tapering line incised body and flared foot, height 5cm, a hinged lidded box in the form of a prayer book, a 19th Century French wine taster with scallop shell handle and heraldic shield device to well of bowl, (4)
£120 - 180



309

309
A set of four 18th Century wavy edge dishes
Each with six reeded lobes, bears touchmark of Johnson Chamberlain (Cott 872) to rear, together with a matching plate, (5)
diameter 9¾in
£200 - 300

310
An 18th Century Russian Chrismatory
Surmounted by a winged angel, the sliding front centred by an icon type device, lower section with detachable lid and touchmark enclosing a twin divided interior with sliding back, sides decorated with icon devices, on paw feet.
height 23cm x width 12.5cm x depth 7cm.
£500 - 800

311
A lidless Jersey measure
Crown 'G.R.' marks stamped to rim, pint capacity.
height 14.5cm
£200 - 300

312
A pair of 19th Century baluster candlesticks
Each with ejector, domed base, (2).
height 24.5cm
£80 - 120

313
A late 18th Century spouted lidded ale jug
Plumette thumbpiece, double C over-lap handle, fillets to body, grill to spout.
height 24cm
£300 - 500

314
An early 19th Century twin handled cup
With tulip shaped bowl, scroll handles with fish-tail terminal, engraved '1806' to underside.
height 12.5cm
£100 - 150

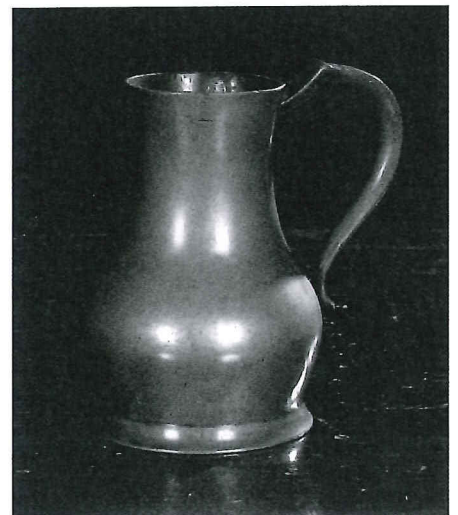
315
An Irish haystack measure
Of quart capacity, stamped to underside 'Austen and Son, Cork, North Main Street'.
height 19cm
£120 - 180

316
A late 18th Century tobacco jar,
Touchmark of TP to base, knopped lid and presser, another 19th Century circular example, together with an oval example dated 1862, a mid 20th Century example by Dunhill, and a 19th Century lidless example, (5)
£80 - 100

317
A pair of German candlesticks, circa 1828
Of tapering fluted form, one engraved 1828, the other 1829, maker G.F. Rother, Attenburgh; together with three pairs of 19th Century English baluster type candlesticks, (8)
£120 - 180



310



311



313



318



321



326

318

A late 17th/early 18th Century 'crested' gadroon edged plate
Bears label to reverse stating the crest of the 'Talbot Family, West Bower this plate found 1928 during an excavation Corn Exchange, Bridgewater, Devon', bears touchmark of Jonas Durand (Cott 1475) to rear of rim.
diameter 9 3/4 in
£200 - 300

319

A multi reeded plate
Bearing hallmark to reverse, *diameter 9 1/2 in*, an 18th Century plain rim charger bearing hallmarks of 'L.H.' to reverse, *diameter 16 1/2 in*; together with an early 19th Century hot water plate by Samuel Cocks, (Cott 1004) (3)
diameter 9 1/2 in
£70 - 100

320

An early 19th Century scale plate
Bears touchmark of Samuel Cocks (Cott 1004) to centre.
diameter 9 in.
£70 - 100

321

A late 17th Century narrow rim plate, circa 1680
Rim with reeding, touchmarks of Robert Banck(e)s (Cott 232) to rear.
diameter 9 1/2 in
£200 - 300

322

A group of 20th Century pewter to include measures
Royal Commemorative plates, plaques. (a qty)
£50 - 60

323

A late 17th Century triple reed dish
Bears hallmarks to rim of 'L.H.', label to rear states a correction to Cott 5666 and that these are the hallmarks and touchmarks to rear of John Harvey.
diameter 16 1/2 in.
£200 - 300

324

A bleeding bowl
With pierced ear, scale lines to bowl.
length 19.5cm
£80 - 120

An almost identical bowl is illustrated A. North 'Pewter at the V & A Museum', plate 213, pg. 136.

325

A pair of early 19th Century baluster type candlesticks
Each with ejector, on domed foot. (2)
height 22cm
£70 - 100

326

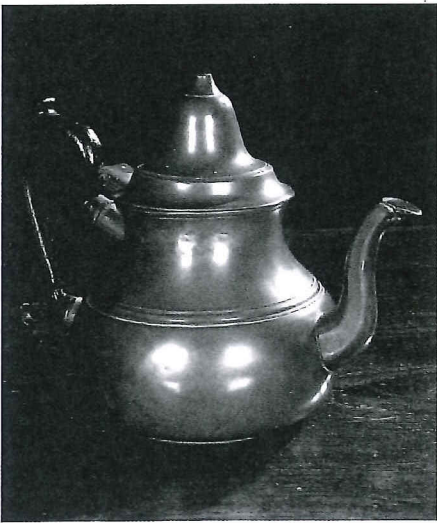
A pair of cut corner candlesticks, probably early 18th Century
Each with baluster knopped stem, wax depression in the square cut-corner base.
height 16cm 2
£300 - 500

327

An 18th Century pear shaped teapot
English or Dutch, possibly made for export to America, dome lid, wooden scroll handle, touchmark base of 'J.F.', possibly John Ferris, Exeter.
height 18cm
£200 - 300

328

An 18th Century twin handled chamber pot
With fold-over rim, single curve handles, later engraved '1757' and stamped ownership initials 'AVE' to base.
height 12cm x width 28.5cm
£70 - 100



327



331

329

An 18th Century 'Welsh Hat'

With reeded rim, tapering drum with bands of multi-reeds, flared foot.

height 22cm x 29.5cm

£70 - 100

330

A pair of early 19th Century baluster candlesticks

Each with ejector, on domed base.

£70 - 100

Reputedly from a vicarage in the West Country.

331

An early 18th Century French lidded porringer

The lenticulated knopped lid with scroll and banded decoration, bowl with a pair of pierced ears, touchmarks to lid and bowl.

height 11cm x width 29cm.

£300 - 500

Bears later inscription to the underside of the lid, illustrated in Adolphe Riff 'Les Aiguleries en Casque', touchmarks referred to as T.26 T.129 (Riff)

332

An early 19th Century spouted jug

The tapering drum engraved 1827, single curve handle with upper reinforcement, bears inscription to base 'From The Earl Fitzwilliam Collection, Wentworth'. Cat. No. 61A/0

£100 - 150

333

A large early 19th Century deep narrow rim bowl

Bears hallmark and touchmark of Townsend & Compton (Cott 4800) to base.

diameter 11in.

£70 - 100

334

A mid 18th Century plain rim plate

Armorial device to rim, possibly the arms of the Ellis Family, Merionethshire, touchmark of George Holmes, London, (Cott 2383) to rear.

diameter 9³/₄in.

£60 - 80

335

A 19th Century snuff box, circa 1830

The hinged lid with central monogram within a thistle, rose and grape vine border, underside of lid engraved 'Miss Sarah Price the Gift of a Friend' 1830, reputedly by Shaw Fisher of Sheffield, length 7cm; another rounded rectangular example engraved F. Salter Esq. to hinged lid, length 7.7cm, an oval line engraved example length 8.5cm, a rectangular example, the lid engraved with a pair of doves, with floral sides length 6cm, a sextagonal shaped snuff box, the lid set with a medallion of George III, length 8.5cm containing four 'tokens'; and a miniature snuff box with Neoclassical design. (10)

£100 - 150

336

A 19th Century oval strainer

A 19th Century quarter gill measure of unusual form, a 1/3 gill conical measure by Gaskell & Chambers, a quarter gill measure of shouldered form, a spirit measure and two funnels, (7).

£100 - 120

337

A miscellaneous group of 19th Century measures

To include a quart truncated cone marked 'Watkins' to base, a spouted example by Sir George Alderson, London, together with straight sided, bulbous, tulip and concave sided measures pint to quarter gill, a 19th Century Christening mug with bands of reeded decoration engraved Thomas, (10).

£100 - 120



332



340



338

A 17th Century English banded tavern pot, by James Donne,
London, circa 1685
(422 LTP) touchmark inside base, hallmarks to lip, re-shaped, repairs,
capacity 30 fl.oz.
£1,000 - 1,500



339

339
An 18th Century cup salt, circa 1790
Depression to flared foot.
height 5.3cm x width 7.8cm.
£100 - 150

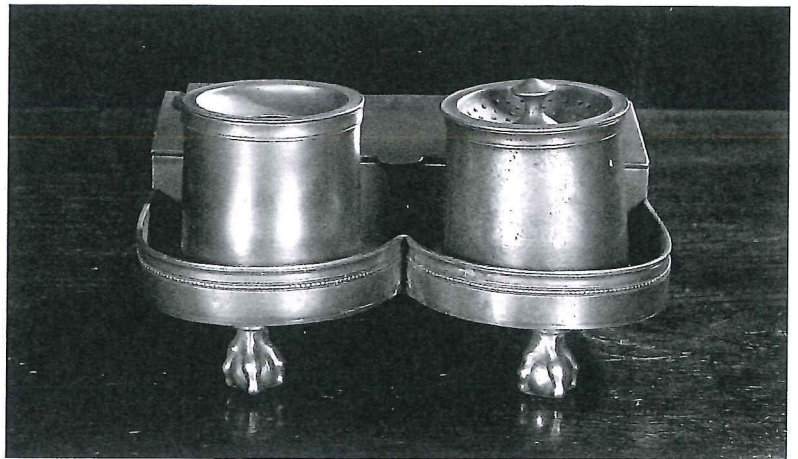
An almost identical salt is illustrated A.V. Sutherland Graeme 'Old British Pewter from 1500 to 1800', The Connoisseur Booklets, No.25 , page 33.

340
An 18th Century Continental wrigglework beaker
Of flared form with bands of line decoration, wrigglework initials HB and touchmark to underside of base.
height 11cm
£60 - 80

341
An 18th Century broth bowl
A large mid 18th century footed cup salt, an early 19th century bulbous salt, a cup salt, a salt on three lion paw feet, together with a collection of seven pepperettes,(12)
£150 - 200

342
A 19th Century chalice, in the 18th Century style
The bowl with mid fillet, knopped stem and domed foot, engraved to bowl 'Presented to Rev. Henry Parish Simonds by the members of the Hoxton Baptist Chapel where he was Pastor 1847 to 1854', *height 22cm*
£50 - 80

343
An early 19th Century scale plate
Bears touchmark of burchfield.
diameter 11in.
£100 - 150



345

344
A French 19th Century holy-water benetier
Written inscription to rear.
height 20cm width 8cm.
£100 - 150

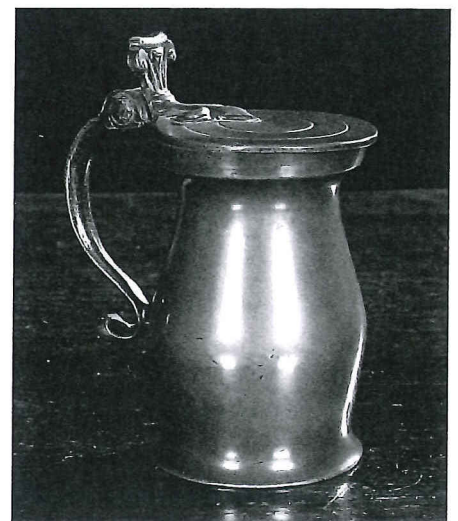
345
A mid 19th Century standish
The lidded quill compartment before circular ink and pounce pots, on ball and claw feet, bears label stating 'N.A. Santesson, Copenhagen, Sweden'.
length 19½cm.
£70 - 100

346
An 18th Century German coffee pot
Of rococo written form, knopped domed lid, touchmark inside base, *height 23cm*, a 19th century example, a tyg bearing touchmark of W.J. Englefield, London to base, a quart footed measure, mark in base of Buckley & Beach, Chelsea, a filleted footed cup, Continental canister, French double deci litre lidded measure, a demi deci litre open measure, an Italian oval trinket box, bell and a candle snuff, (11).
£120 - 180

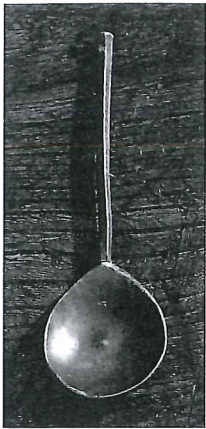
347
A 19th Century snuff box
Engraved with a central flowerhead within scroll design *length 7cm*, an example centred by a shield, *length 6cm*, another centred by a heart, *length 4cm*, a Victorian snuff box in the form of a shoe, *length 8cm*, a circular example engraved 'Wm Herbert Dulboro. 1863' within an anthemion border, *diameter 6cm*, a lidded round box with scrolling acanthus engraving *diameter 7cm*, a caddy spoon bearing maker's initials T.Y., a Cornish spoon rest, a pair of Rocco style knife rests, a whistle, a pair of beaded shoe buckles with brass ball decoration, a shoe 'pin cushion'. (14)
£150 - 200



348



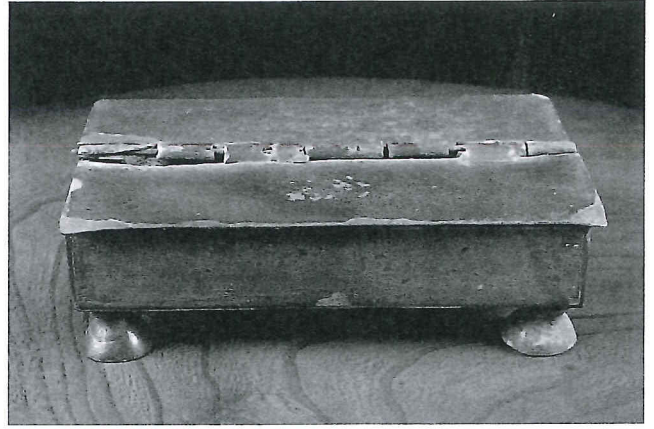
350



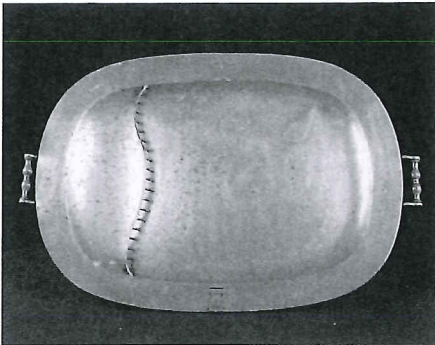
354



355



357



358

348

A Stuart flagon, circa 1700

With reeding to lower end of drum, the dome lid with denticulations and rams-horn variant thumbpiece, simple curve handle,(a/f). Height 29cm

£700 - 1,000

349

A 17th Century French broad rim dish

Initialed and dated '1698' to rim, touchmark to rim, inscription to rear reads 'from Vernay Voltaire'.

diameter 10 $\frac{3}{4}$ in.

£50 - 80

353

A set of four 19th Century hot water plates

Each bearing hallmarks, together with the touchmark of John Duncombe, diameter 8 $\frac{3}{4}$ in., together with a single reed plate bearing hallmarks and touchmark to rear, diameter 9 $\frac{1}{2}$ in., two tulip shaped mugs by James Yates, Birmingham and a quart example. (8)

£100 - 120

354

A 16th Century hexagonal stem spoon

The rounded bowl with touchmark of D.C. (?) within crowned rose to bowl. length 17.5cm

£100 - 150



359



360

350

A half pint O.E.W.S. double-volute baluster measure, circa 1740

The plain body with flat lid, double volute thumbpiece with fleur-de-lys attachment, S-shaped handle with ball terminal and diamond attachment stamped 'W.R' or 'W.F' to collar. 13.3cm high 5" high)

£400 - 600

351

A 19th Century Continental wine taster

With heraldic shield to well and simple loop handle. 8.5cm high (3in high)

£60 - 70

355

A late 17th Century triple reed dish

Bears hallmarks of John Tubb, London (Cott 4821) to rim. diameter 16 $\frac{1}{2}$ in.

£150 - 200

356

An 18th Century single reed dish

diameter 16 $\frac{1}{2}$ in ; together with two similar dishes; another with pseudo hallmarks to rim, three plain rim dishes, diameter 15in; two single reed Continental dishes, diameter 14in and a late 18th Century hot water plate bearing touchmark of John Home (Cott 2393) to reverse. (10)

£200 - 300



361

352

A narrow rim deep bowl

With armorial device to centre of well, the rim engraved 'THE FREEDOM OF ENGLAND BY GODS BLESSING RESTORED 1661' 'R. WICKS, BATH' London label and touch to base. diameter 10 $\frac{1}{2}$ in.

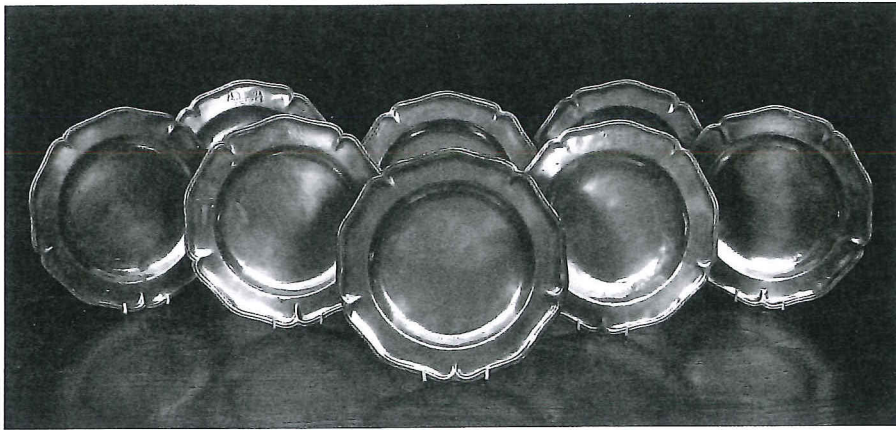
£70 - 100

357

An 18th Century standish

Of typical rectangular twin hinge lidded form, containing a compartmentalized interior, on domed feet. 16.5cm wide x 11cm deep x 5cm high,(6" wide x 4" deep x 1.5" high)

£80 - 100



364



364 (detail)

358

An early 19th Century hot water serving dish
Of twin handled oval form, bearing touchmark of Thomas Alderson (Cott 40) to underside.
length 65cm.
£100 - 120

359

A chalice, possibly 17th Century
The cup with reeded decoration to lip, raised on a knopped stem and domed foot.
Height 16.2cm
£400 - 600

360

An 18th Century holy-water benetier, possibly German
Of typical crucifix form, crown X stamped to cross.
height 24.5cm x width 212.5cm
£100 - 150

361*

A set of six mid 18th Century plain rim plates
Each bearing touchmark of John Duncombe and ownership triad. *Diameter 9½ in., (6)*
£100 - 150

362*

An early 19th Century lidded ale jug
With dome lid, palmette thumbpiece and single curve handle. *20cm high, 7.5" high)*
£200 - 300

363

A late 17th/early 18th Century twin reeded charger
diameter 18½in; together with three plain rim plates each with monogram to rim, bearing touchmark of Thomas Compton, London, (Cott 1063) *diameter 9½in. (4)*
£150 - 200

364

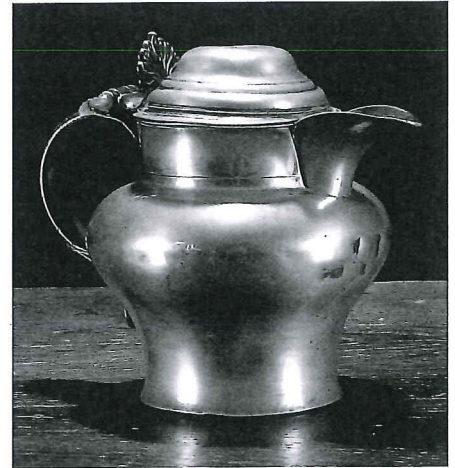
A set of eight five lobed wavy edge plates
Each with armorial device to rim, the dexter side possibly the arms of Breton of Hertfordshire, touchmark of Thomas Chamberlain, London (Cott. 1755) to rear, *diameter 9.5ins. (8)*
£600 - 800

365

An 18th Century twin handled porringer
Solid ears, possibly French. *diameter 25.5cm.*
£80 - 120

366

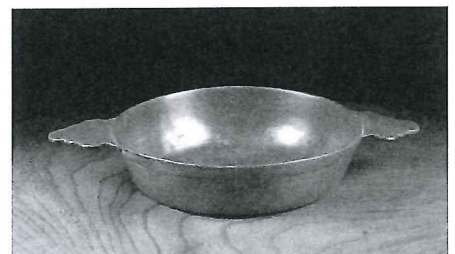
A pair of 18th Century plain rim dishes
An 18th Century plain rim plate bearing touchmarks of Alexander Cleeve (Cott 961) to rear, another plain rim plate with touchmarks of Robert Patience (Cott 3549), another by John Jupe (Cott 2693). (5)
diameter 9¾in
£100 - 150



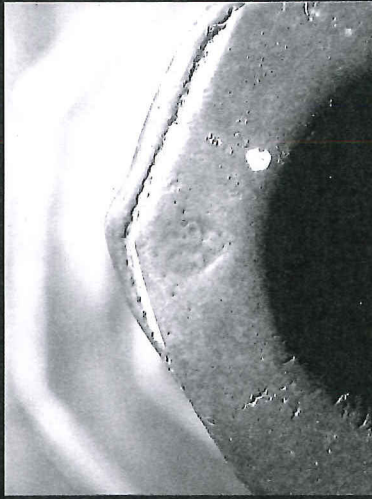
362



363 (part)



365



367

An octagonal base candlestick, circa 1680

Ribbed stem and octagonal scone, drip tray and base, base with cast flower decoration, maker's mark 'IB' in a lozenge to scone, ownership initials 'E.M' to underside, 14cm base wide, 18cm high (5.5" wide, 7" high)

£10,000 - 12,000

A similar candlestick is in the collection of The Worshipful Company of Pewterers, London and illustrated in the supplementary catalogue, 1979, fig. 603. Maker 'IB' A similar candlestick illustrated 'British Pewter and Britannia Metal for Pleasure and Investment', p. 104, fig.38. Sold in these rooms 'The Shemmell Collection', lot 307, 26th October 2006.

A similar candlestick sold 'The Little Collection', Christies, King Street, 1st May 2007, £11,000.00. A tankard with the same maker's mark, sold lot 74, same collection.

Literature:

Michaelis 'Antique Pewter of the British Isles', fig.48.

E. Koldeweij 'The English Candlestick 1425-1925', Cat.34., pg.68.

368 - 399

No lots

The Kenneth Gordon Pewter Collection
Wednesday 7 May 2008
Chester
Entries now invited



We are currently accepting pewter to be offered for auction along side this collection. Closing date for entries Friday 21 March 2008

Enquiries

David Houlston
+44 (0) 1244 313 936
david.houlston@bonhams.com

Catalogue

To order a catalogue, or for further information about catalogue subscriptions, please contact
+44 (0) 1666 502 200
+44 (0) 1666 505 107 fax
subscriptions@bonhams.com

Illustrated:

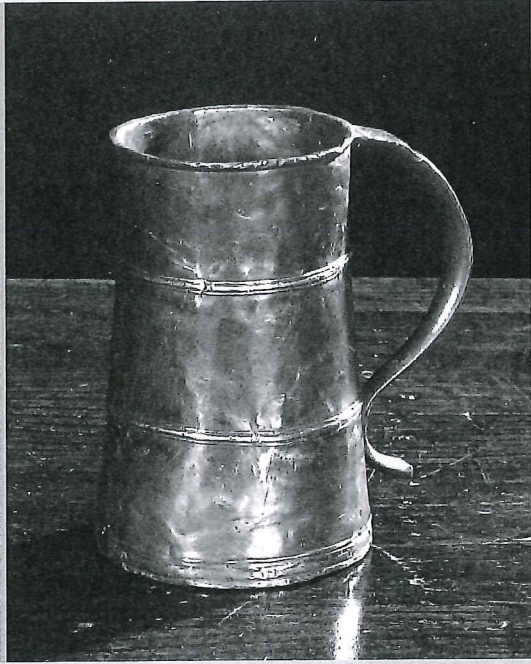
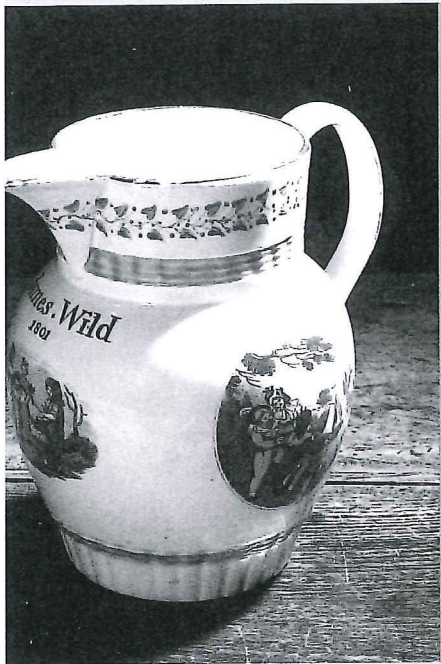
A selection from The Kenneth Gordon Pewter Collection

Bonhams

New House, 150 Christleton Road, Chester, CH3 5TD
+44 (0) 1244 313 936
+44 (0) 1244 360 028 fax
www.bonhams.com/chester



London · New York · Paris · San Francisco · Los Angeles · Hong Kong · Melbourne · Dubai



Bonhams

101 New Bond Street
London W1S 1SR
+44 (0) 20 7447 7447
+44 (0) 20 7447 7400 fax
www.bonhams.com