



**The Oak Sale including Pewter**  
**Friday 17 January 2003**  
**11am**

Bonhams  
New House, 150 Christleton Road  
Chester CH3 5TD

**Viewing**

Sunday 12 January 10am - 1pm  
Monday 13 January 10am - 4pm  
Tuesday 14 January 10am - 4pm  
Wednesday 15 January 10am - 4pm  
Thursday 16 January 10am - 4pm  
Friday 17 January 9am - 10.45am

**Enquiries**

David Houlston (Furniture)  
david.houlston@bonhams.com  
Simon Chesters-Thompson (Works of Art)  
simon.chesters-thompson@bonhams.com

**Sale number: 10012**

**Internet: [www.bonhams.com](http://www.bonhams.com)**

**Cover illustration: Lot 35**

**Bids**

01244 313936  
01244 340028 fax (enquiries only)  
01244 341269 fax (bids only)  
bids@bonhams.com  
(e-mail bids will only be accepted at this postal address and must include the bidders full name and postal address).

**Catalogue: £10 (£12 by post)**

Bonhams 1793 Limited  
Registered No. 4326560  
Registered Office: Montpelier Galleries  
Montpelier Street, London SW7 1HH  
Incorporated in England  
+44 (0)20 7393 3900 +44 (0)20 7393 3905 fax



392

392  
A large early 17th Century leaded bronze mortar, the fluted convex rim over cast "ceiling" type decoration, flanked by twin clenched fist handles, *7½in. 19cm. high.*  
£3,000 - 5,000  
see illustration

393

A pair of Welsh wood sugar tongs, with pierced heart decoration and claw holders; together with a turned and carved wood needle case, (2)  
£100 - 150  
see illustration

394

A late 17th Century oak chest of drawers, with four long twin mitre moulded graduated drawers, on later bun feet, *100 x 104 x 56cm.*  
£600 - 800

395

A late 17th Century oak coffer, the hinged rectangular lid above a triple geometric mitre panel front, raised on extended stile supports, *71 x 128 x 55cm.*  
£200 - 300

396

An early 18th Century oak coffer, the hinged rectangular top above a quadruple panelled front, each panel carved with interlaced leaves centred by a flowerhead, carved rails, on extended stile supports, *70 x 147 x 59cm.*  
£400 - 600

397

A late 17th Century oak coffer, the hinged rectangular top chip and punch decorated to edge, above a triple panelled front incised carved with stylised leaves and flowers, with scroll carved rails.  
£300 - 500

## Pewter

410

Three mid 18th Century single reed dishes, one bearing touchmark of Allen Bright, Bristol to rear (Cott. 574), *diameter 38cm* (3)  
£100 - 150

411

A late 18th Century oval plain rim plate, and four smaller examples *length 38.5 and 27.5cm respectively*, together with an early 19th Century plate warmer bearing touchmark of Compton, Townsend (Cott. 1065), two plain rim *9¼inch* plates, a pepperette and a Britannia metal flat dish, (10)  
£100 - 150

412

A late 17th Century triple reed charger, hallmarks and ownership initials to rim, touchmark of Samuel Jackson, London (Cott.5741) to rear, *diameter 18in. 46cm.*  
£200 - 300

413

A pair of mid 18th Century cup salts, (see Cotterell page 131 illustration 'L' for similar example), and a 19th Century sugar castor: (3)  
£200 - 300

414

A 17th Century style broad rim wrigglework charger, engraved to the well with profile of Sancroft, Archbishop of Canterbury and dated 1688, the rim with conforming portraits of bishops within roundels surrounded by moon and star motifs, touchmark to rear, *diameter 18in.*  
£300 - 400

415

A pair of mid 18th Century plain rim plates, each bearing touchmark of Thomas Chamberlain (Cott.873), *diameter 9¾"*, together with four other plain rim plates. (6)  
£70 - 100

416

Three 18th Century single reed chargers, various indistinct marks. *diameter 18", 18", 16½"* respectively  
£140 - 160

417

An early 18th Century German spouted flagon, of baluster shape with ball thumbpiece, and dragon head spout, inscribed to body, *height 34cm.*  
£80 - 120

418\*\*

A Scottish ball and bar baluster measure, of mutchkin capacity, handle and lid reattached, *height 11.3cm.*  
£50 - 70

419\*\*

A gill O.E.W.S bud baluster measure, with plain body, *height 10.5cm.*  
£80 - 100

420

A 19th Century Scottish lidded bulbous measure, gill, with dome lid bearing Crown Imperial mark, *height 11cm.*  
£30 - 40

421

An early 18th Century large single reed charger, circa 1720 hallmarks and touchmarks to reverse of Timothy Fly, London (Cott. 1702), *diameter 22", 56cm.*  
£500 - 600

422

An early 18th Century single reed charger, circa 1720, ownership initialed W.G.E. to rim, hallmarks of Edward Gregory, Bristol (Cott. 2001) to rear, *diameter 20", 51cm.*  
£300 - 400

423

A mid 18th Century half pint double volute baluster measure, plain body with touch marks of 'IF' to rim, lid with ownership initials 'I.S.', handle with ball terminal and diamond attachment, height 13cm. £300 - 400

424

A mid 18th Century pint double volute baluster measure, plain body with touchmark of 'IF' to rim, ownership initials 'IS' to lid, handle with ball terminal and diamond attachment, height 15.5cm. £500 - 700

425

An early 19th Century large oval plain rim dish, touchmark of Thomas Alderson, London (Cott.40) to rear, diameter 26", 66cm. £80 - 100

426

A group of 19th Century measures, to include bulbous examples (quart to gill capacity), truncated straight sided examples (quart to half pint capacity) spouted measures (quart and pint capacity) and six half pint measures. (28) £150 - 200

427

A collection of pewter, to include wriggle work flared flagon, a flat lid tankard, Normandy style flagon with twin acorn thumbpiece, a spouted flagon, a bottle feeder, ice-mold, dishstand, salts, (a lot). £200 - 300

428

An 18th Century single reed charger, circa 1730, touchmark of Edward Leapidge (Cott. 2894) to rear, diameter 20", 51cm. £300 - 400

429

An early 18th Century reeded dish, circa 1710, hallmarks to rim and touch to rear of Christopher Baldwin, Wigan (Cott. 210), diameter 14<sup>3</sup>/<sub>4</sub>", 37.5cm. £350 - 450

Christopher Baldwin's will, proved at Chester in 1725.

430

A group of six early 19th Century platewarmers, diameter 9<sup>1</sup>/<sub>2</sub>", 24cm. £50 - 60



431

A collection of spoons and spoon fragment, to include a 17th Century baluster knob example (bowl Worn). (8) £50 - 60

432

A pair of 19th Century baluster knob candlesticks, and a pair of smaller knopped candlesticks with lifters, height 25", 15cm, respectively. £50 - 60

433

A group of five 18th Century reeded dishes, to include a pair bearing touchmark of William Smith, York, (Cott.4402), diameter 15", 38cm. £80 - 120

434

An 18th single reed charger, hallmark of I.H. to rim and indistinct touchmark to reverse, dia 18", 46cm, together with two plain rim chargers 18", 46cm, and with a plain rim dish bearing hallmarks of S.E. to reverse, diameter 13<sup>1</sup>/<sub>4</sub>", 33cm. (4) £60 - 80

435

A group of five 18th Century elongated and oval plain rim dishes, various marks. (5) £70 - 100

436

A 19th Century gallon bulbous measure, with added spout, stamped 'gallon' to rim, height 26cm. £500 - 600



517

519

459

437  
An early 19th Century tobacco box, circa 1800, of plain oval form, with knob to lid, height 13cm, width 14cm. £120 - 150

438  
A late 18th Century bottle drainer, the baluster body with upper 'cage' of three legged ring, (ring replaced), height 23cm. £100 - 120

439  
A group of sixteen 18th Century mostly 9" single reed and plain rim plates, to include an example by John Home (cott 2393), two bearing Samuel Ellis touchmark (Cott. 1547). (16) £100 - 200

440  
A single reeded wrigglework plate, circa 1720, the well decorated with crown lion rampant, ownership initials M.W. and London mark to rear, 8½", 21cm dia. £80 - 100

441  
An 18th Century plain rim dish, with leaf wrigglework decoration to rim and well, well centred by fleur-de-lys and flowerhead heraldic style shield touchmark of John Townsend (Cott. 4795) to reverse. £100 - 150

442  
A group of eight 18th Century and later Continental dishes, various relief and wrigglework designs. (8) £120 - 150

443  
Two mid 18th Century single reed deep bowls, 9" and 8" diameter, a later wavy edge example and two plain rim dishes. (5) £40 - 60

444  
A circular tapering lidded vessel, with scroll handle and turned finial, lacking spoon, height 10cm. £40 - 60

Ex. Sandy Law Collection. (lot 142 sold Phillips, Chester September 1997.)

445  
A part 17th Century Heemskerck type candle stick, with baluster knob, central drip pan and flared base, height 18cm. £40 - 60

Ex. Sandy Law Pewter Collection.

446  
An early 18th Century half pint lidless baluster measure, and a gill example. height 10cm, 8cm, respectively. (2) £60 - 80

447  
A mid 19th Century half gallon bulbous measure, Middlesex County, Victorian verification mark to rim, height 21cm. £600 - 800  
see illustration

448

A late 18th Century baluster water vessel, a hexagonal base salt, a faceted knopped and hexagonal stepped candlestick height 24cm, a late 17th Century triple reed charger diameter 43cm, three plain rim 18th Century plates and a reeded example. (8) £120 - 180

449

A Mid 18th Century plain rim plate, touchmark and hallmark of Robert Powell, Cork Ireland to reverse (Cott. 3748) diameter 9¾", 24.5cm and two with hallmark to reverse possibly William Davison, Dublin (O.P 5562) diameter 9¾" 24.5cm (2) £80 - 120

450

An early 18th Century single reed dish, touchmarks to reserve probably Richard Goring, Bristol (Cott 1909) diameter 15", 38cm. £60 - 80

451

A pair of early 19th Century single reed plates, bearing touchmark of Thomas Compton (Cott. 1063) to reverse, diameter 9¾, 24.5 cm; together with a five lobed wavy edge dish again touchmark of Thomas Compton to reverse, diameter 9½, 24cm. (3) £80 - 120

452

An 18th Century plain rim bowl, Scottish, unidentified hallmark to reverse, an early 18th Century single reed plate bearing touchmark of Timothy Fly, London (Cott. 1704) to reverse and a 20th Century wavy edge plate. (3) £60 - 80

453

An 18th Century plain rim copper bowl, possibly Irish, rear folded rim, dia 32.5cm. £60 - 80

454

A group of thirty 19th Century measures, to include bulbous examples, pint to quarter gill capacity, and truncated straight sided examples, quart to half pint capacity, tulip shaped and spouted examples. (30) £120 - 180

455

An early 19th Century half pint lidless baluster measure, Aberdeen, circa 1830, with incised lines to body, stamped 'Imperial Half Pint DG' to underside of base, together with an unusual Scottish pint measure of concave form, with double scroll handle, Edinburgh verification mark. (2) £150 - 200  
see illustration

456

A group of eighteen 19th Century measures, including bulbous and straight sided examples. (18)  
£100 - 150

457

Two 19th Century copper haystack measures, pint and half pint capacity, a pewter teapot with wooden handle a baluster candlestick and a pair of scallop shell cast salts. (6)  
£40 - 60

458

A 19th Century quart lidded tankard, with dome lid and open chair-back thumbpiece, multi reeded body, handle with fish-tail terminal, mark of Yates and Birch, together with a similar pint tulip measure. (2)  
£100 - 150

459

A late 18th Century spire flagon, with knopped domed lid, solid chair back thumbpiece above a slender drum, handle of characteristic double curve form, *height 28cm.*  
£500 - 700  
see illustration

460

An 18th Century Jersey measure, of shouldered form, heart shaped lid with twin acorn thumbpiece, handle engraved 'E.I.D.2', paper sticker to base stating, Woolmer collection, *height 28cm.*  
£200 - 300

461

A late 19th Century pint and half pint measure, each with folded re-inforced lip, by E. Cowles of Hounslow. (2)  
£100 - 150

462

A mid 18th Century quart unlidded baluster measure, *height 18cm.*  
£200 - 300  
see illustration

463

A mid 18th Century chalice, with ring turned stem on domed foot, *20cm.*  
£100 - 150



518

460

497

498

464

A mid 18th Century quart measure, of tulip shape, the handle with hooded ball terminal, an O.E.W.S pint example and an early 19th Century quart tulip measure with fish tail terminal and touchmark of George Alderson to base (Cott. 38) hallmarks to rim, paper label stating Ex Peel collection to base. (3)  
£80 - 120

465

An early 19th Century standish, with rectangular hinged cover enclosing a triple divided interior, with drawer below, paper label to base stating Reading Exhid, 1969 No 189, *height 5cm, length 19.5cm.*  
£60 - 80

466

A wrigglework footed bowl, the body with stylized flowerhead decoration and two seahorse handles, touchmark to centre of bowl, *height 11.5cm, dia 20cm.*  
£300 - 400

467

An early 19th Century standish, circa 1800, of rectangular form with trim flap lid, on bun feet, *length 17.5cm*, another with knopped domed well covers embracing a hinged compartment with tray to front, on bun feet, *length 23cm.* (2)  
£70 - 100

468

Three 19th Century lidded tobacco jars, one of oval form with ivory knob, stamped Alderson to base, with presser, one of circular form with cast head finial presser, the other of circular form with crown knob, the sides decorated with panels of shamrocks, roses and thistles, crowned G mark to inside base. (3)  
£80 - 120

469

A narrow rim single reed saucer, circa 1700, *diameter 6 1/4", 15.5cm.*  
£200 - 300  
see illustration

470

An early 18th Century single reed narrow rim plate, touchmark of John Carpenter to rear, incised crowned GR to front of rim, *diameter 8 1/2", 22cm.*  
£70 - 100

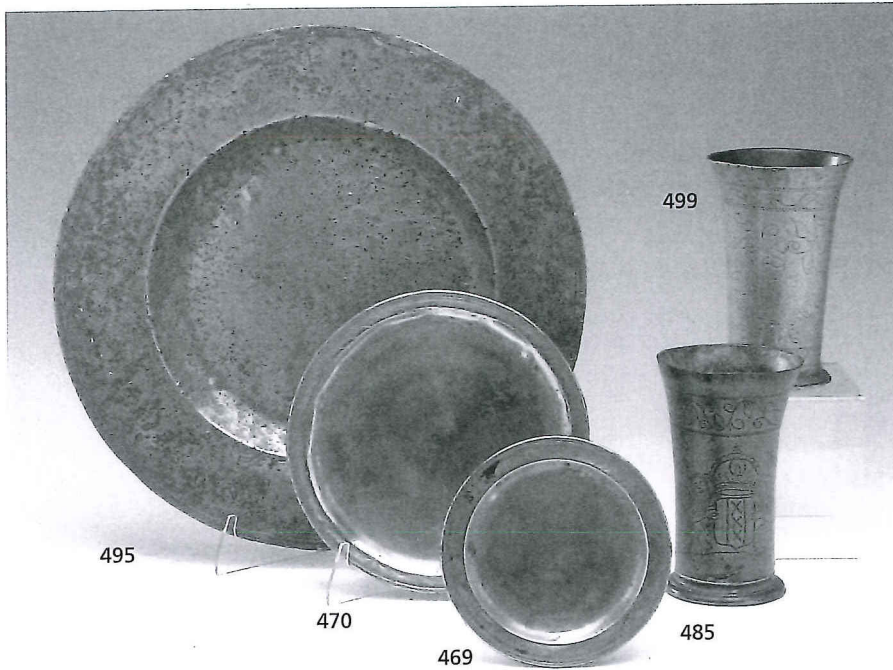
John Carpenter was pewterer to Royal Hospital Chelsea.  
see illustration

471

A mid 19th Century quart bulbous measures, Edgar & Son, Bristol; together with a straight sided measure by Peter Llewellyn of Bristol. (2)  
£120 - 150

472

An 18th Century plain rim plate, with crowned crest to rim and engraved Sts.Inn C.I. to rear, label to rear stating crest to be that of Charles Pratt Baron Camden (pre 1786 when he became Earl Camden). Sargents Inn, formerly in Chancery Lane from 1758 (see Sutherland-Graeme, Connoisseur December 1941). Ex Carvick-Webster Collection, *diameter 9".*  
£70 - 100



**473**  
An early 18th Century single reed plate, touchmark of Alexander Webber Jrn (Cott. 5015) to reverse, *diameter 9"*, *23cm*, together with an early 18th Century single reed plate, with touchmarks and hallmarks to reverse, possibly those of John Shorey (Cott. 4263), *diameter 9½"*, *24cm*. (2)  
£60 - 80

**474**  
A late 18th Century large oval plain rim dish, touchmark to rear of John Townsend (Cott. 4801) *diameter 21"*, *53cm*.  
£80 - 120

**475**  
A 19th Century pint truncated cone measure, Wigan, hallmarks possibly of George Bolton to rim, another with various marks to rim, another and four beakers. (7)  
£50 - 60

**476**  
Three 19th Century bulbous measures, Liverpool  
pint, half pint and gill capacity. (3)  
£50 - 60

**477**  
A 19th Century pint bulbous measure, Wigan, a U-shaped quart measure, possibly by Richard Pitt (Cott. 3697), a brass rim half pint bulbous measure, a gill bulbous measure and a pint and quarter pint bulbous measure with oval crowned plaque to body. (6)  
£50 - 80

**478**  
A pint lidded ale jug, with dome lid, plumette thumbpiece, fillet to body, double C-overlap handle, rubbed mark to base.  
£50 - 80

**479**  
A brass seal top spoon circa 1600, with fig shaped bowl, flattened stem with circular seal knob, maker's mark to bowl, together with an Apostle knob spoon, makers mark to fig shaped bowl. (2)  
£100 - 150  
see illustration

**480**  
A 16th Century slip top spoon, the fig shaped bowl on slender hexagonal flattened stem, fleur de lys mark to fig shaped bowl, another with maker's mark to handle, traces of nature's gilding, *length 17"*, *14.5cm respectively*. (2)  
£100 - 200  
see illustration

**481**  
A collection of spoons, to included two seal top style examples, four Dutch style examples, two 18th Century rat tail examples.  
£50 - 60  
see part illustration

**482**  
A late 19th Century patent self-pouring teapot, by James Dixon & Sons, a Britannia metal coffee pot, a pint measure by T & J Birch circa 1862-64, a quart measure by Ashley of London, circa 1850. (4)  
£50 - 100

**483**  
A collection of 19th Century measures, to include a straight sided pint, five half pint bulbous examples, a gill and quarter gill, a pint and gill tulip measure, a beaker, pepperette, plated measure and small pot. (14)  
£100 - 150

**484**  
An early 19th Century gallon bulbous measure, circa 1800, verification mark to rim, mark of Yates, Birch & Spooner, Birmingham, *length 27.5cm*.  
£600 - 800  
see illustration

**485**  
A late 18th early 19th Century wrigglework beaker, Dutch of flared form with elaborate wrigglework decoration of scrolling foliage above a pair of lion rampant holding a crown, *height 17cm*.  
£500 - 600  
see illustration

**486**  
A group of seven pint handled footed cups, two single reed dishes, a plain rim dish, a 20th Century saucer, an Arts and Crafts influenced dish, a musical tankard and a modern straight sided measure. (13)  
£40 - 60

**487**  
A late 17th Century triple reed dish, hallmarks to rim and touchmarks to rear of Henry Wiggin, London (Cott. 5136), *diameter 15"*, *38cm*.  
£200 - 300

**488**  
A late 17th Century triple reed dish, hallmarks to front of rim and touchmark to rear, *diameter 16¾"*, *42.5cm*.  
£150 - 200

489

A late 17th Century triple reed dish, hallmarks of John Barlow (Cott. 256) to rim and traces of touchmark to rear, diameter 16¾", 42.5cm. £150 - 200

490

A late 17th Century wrigglework triple reed charger, the rim decorated with scrolling flora, the well with stag, hound and exotic bird within floral surround, hallmark of 'IG' to rim, diameter 18", 46cm. £800 - 1,200 see illustration

491

An early 18th Century single reed dish, indistinct touchmark and ownership initials WBMI to rear, diameter 16½", 42cm. £80 - 120

492

A mid 18th Century plain rim charger, touchmarks and hallmarks of Robert Bush Snr., Bristol, to rear, (Cott. 737), diameter 19½", 49cm. £200 - 300

493

An 18th Century plain rim dish, touchmark of Maxwell to rear, (see Cott. 3153 for similar mark), diameter 15", 38cm. £80 - 120

494

An 18th Century plain rim dish, superfine and London marks to rear, diameter 16¾", 42.5cm, together with a pair of 9" plain rim plates bearing hallmark of John Duncombe to rear. (3) £100 - 150

495

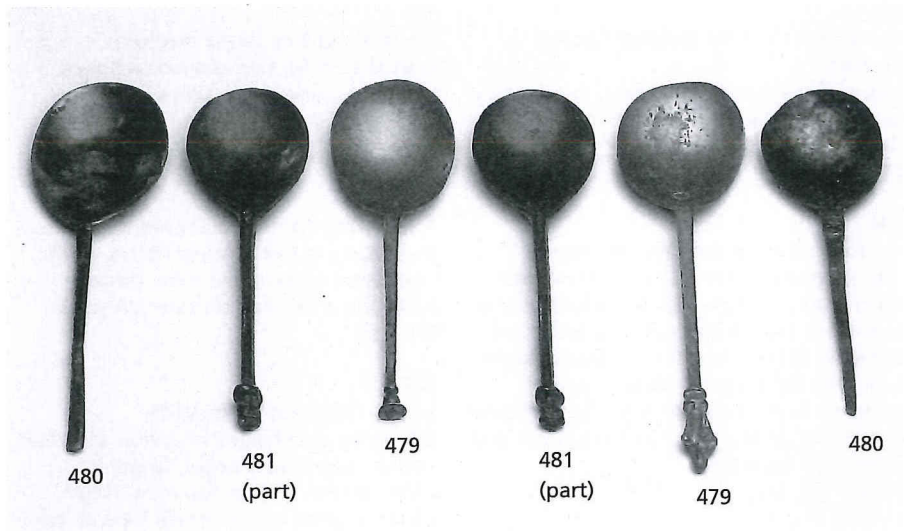
A 17th Century single reed broad rim dish, diameter 15¾", 39cm; rim 2¾", 7cm (35%). £100 - 200

496

A late 17th Century broad rim charger, hallmarks to rim of John Cave, Bristol (Cott. 857) and touchmark to rear, diameter 18½", 47cm; rim 8.5cm (36%). £400 - 600 see illustration

497

A Scottish crested lidded tappit hen, circa 1800, 'plowk' mark to inside of rim, of Scottish pint capacity, incised ownership initials ATIC to base, height 30cm. £400 - 600 see illustration



498

A Scottish tappit hen, circa 1800, verification mark to rim, mutchkin capacity, height 19cm. £300 - 400 see illustration

499

A late 18th/early 19th Century wrigglework beaker, Dutch, of flared form, decorated with exotic birds and scrolling flora, height 18cm. £200 - 300 see illustration

500

Six 18th Century Continental wavy edge plates, diameter 9" and 11", a repousee wavy edge plate, a reeded 9" plate, a single reeded dish and an embossed oval shaped dish. (10) £100 - 120

501

Four late 17th Century Continental broad rim dishes, one engraved 'HAS 1687', three each with maker's mark to rim, diameter 32cm. (4) £100 - 120

502

A late 17th Century Continental wrigglework dish, decorated with floral bands centred by fleur-de-lys over winged eagle, ownership initials SMMD to rear, diameter 34.5cm. £100 - 120



- 503  
Three 18th Century spouted flagons, German, each with ball knob thumbpiece, heart shaped spout, tapering cylindrical drum initialled and dated with flared base. (3)  
£100 - 120
- 504  
An early 18th Century lidded flagon, with knopped domed lid, mask thumbpiece, handle cast with flora, tapering cylindrical drum with flared base, *height 29cm*, together with two early 19th Century German lidded flagons, each with ball knob thumbpiece, one of cylindrical form, the lid set with circular figural plaque, the other of baluster form, *25cm and 28cm high respectively*.  
£100 - 120
- 505  
A mixed group of Continental pewter, to include four teapots, a Rococo coffee pot and jug, two oval bowls and a single reeded dish. (14)  
£100 - 120
- 506  
A mixed group of pewter, to include an Irish handleless pint measure, a pair of mid 18th Century cupsalts, an inkwell, pepperettes and castor, an eight sided wavy edge plate. (16)  
£100 - 120
- 507  
A pair of repousée decorated dishes, each embossed with geometric band, *diameter 13½", 34.5cm*.  
£80 - 120
- 508  
A large 17th Century broad rim dish, indistinct hallmarks and ownership initials 'BI' to rim, *diameter 16¾", 42.5cm, rim 7cm (32%)*.  
£120 - 180
- 509  
A set of ten early 18th Century plain rim plates, each with armorial device to rim and touchmarks to rear of John Shorey, Jnr, London (Cott. 4263), *diameter 9¼", 23.5cm*.  
£250 - 350
- 510  
An 18th Century Jersey measure, heart shaped lid, twin acorn thumbpiece, touchmark under lid of John De St. Croix (Cott.1360), *height 28cm*.  
£200 - 300
- 511  
A mid 18th Century plain rim oval dish, touchmarks to rear, diameter 51cm, a five lobed wavy edge reeded plate, *diameter 22cm* and a flat dish, *diameter 27cm*. (3)  
£40 - 60
- 512  
A late 18th Century standish, with rectangular hinged lid enclosing a fitted interior, with drawer below, *length 17cm*, another of twin flap form, *length 25cm*, together with a circular tobacco box with figural head knob. (3)  
£70 - 100
- 513  
A group of ten 19th Century footed beakers, half pint capacity. (10)  
£60 - 80
- 514  
A group of fourteen tulip shaped measures quart to half pint capacity. (14)  
£100 - 150
- 515  
A pair of late 19th Century baluster knob candlesticks, three with gadroon dome bases and a later pair. (7)  
£100 - 120
- 516  
A mid 18th Century cup salt, together with three pap boats, two castors and a lidded vessel. (7)  
£40 - 60
- 517  
An unusual late 18th Century gallon measure, of cylindrical form, with reinforced collar, handle with fish-tail terminal and re-inforced attachment, bearing written inscription 'formerly at Longleat', *height 11½", 29cm*.  
£600 - 800  
see illustration
- 518  
A mid 18th Century spire flagon, with stepped domed lid, tapering cylindrical drum with three broad fillets, raised domed skirt, handle of characteristic double curve form with hooded ball terminal, maker's mark of Allan Bright, Bristol (Cott. 574) to inside base, *height 30cm*  
£800 - 1,200  
  
Previously sold Sotheby's 'British Folk Art Sale', 22nd November 1988, lot 1366.  
see illustration
- 519  
A straight sided York Flagon, circa 1690-1700, with domed lid, heart and leaf spray thumbpiece, maker's mark of Edmund Harvey, York (Cott. 2185) to inside base.  
£4,000 - 6,000  
  
Ex Port Collection Ex Sutherland Graeme Collection Illustrated and described by Charles G.J.Port in an article entitled 'Some uncommon pieces of pewter', Part II, Connoisseur, December 1917. Exhibited Daily Telegraph Exhibition, Olympia, 1929. Illustrated Apollo, July 1933. Exhibited Usher Gallery, Lincoln, 1962 (No.73) Previously sold Sotheby's 3rd June 1965, lot 83; 3rd July 1972 lot 156.  
see illustration
- 520  
Three 18th Century plain rim plates, *9½ins diameter*, a reproduction *12ins* example and two smaller plates (3)  
£100 - 150
- 521  
A pair of early 20th Century wavy edge dishes, *diameter 14½ins, 37cm* (2)  
£70 - 100
- 522  
Four early 19th Century plate warmers, *9½ins, 24cm diameter* (4)  
£100 - 150
- 524  
Four similar five-sided wavy edge plates, *9ins diameter*, a large and smaller example, one by William Wright, London circa 1770 (6)  
£120 - 180
- 525  
Two Britannia metal lidded flagons, both with tapering drums, one spouted, *height 30cm* (2)  
£60 - 80

526

Four 20th Century 'pot-bellied' lidded measures (4)  
£80 - 100

527

Approximately twenty 19th/20th Century measures, straight, concave and bulbous variety, quart to quarter gill capacity (a lot) qty.  
£120 - 150

528

A pair of chalices, together with a pair of baluster knob candlesticks, a lidded measure, pepperettes, a lot qty.  
£140 - 160

529

An 18th Century plain rim charger, ownership triad IPA to rim, another with damaged rim, *diameter 18 ins, 46cm* (2)  
£120 - 180

530

Three 18th Century plain rim chargers, indistinct touchmarks to rear, *18 ins*, together with two *15 ins* plain rim dishes, a large plate warmer, a smaller example and two *9 ins diameter* plates (9)  
£200 - 300

531

A reproduction campaign cutlery set, in leather pouch, containing two trefoil spoons, a fork, a knife and Dutch type spoon (5)  
£100 - 150

532

L. Ingleby Wood  
"Scottish Pewter-Ware and Pewterers",  
Simpkin, Marshall & Co. Ltd.  
£40 - 60

End of Sale