

GBI

GOOD ENGLISH AND CONTINENTAL

**Furniture**  
**Works of Art**  
**Pewter and Metalware**  
**Eastern Carpets and Rugs**

*To be Sold by Auction*

On **TUESDAY, FEBRUARY 16th, 1982**  
**Green Room** **11 a.m.**

**Sale No. 23,748**



*Members of the Society  
of Fine Art Auctioneers*

Blenstock House, 7 Blenheim Street  
New Bond Street, W1Y 0AS  
Telephone: 01-629 6602

*Telegrams: "Auctions, London, W.1"*  
*Telex No. 298855 BLEN G*

**PHILLIPS, SON & NEALE**

Founded 1796

- 112\* An attractive Pair of brass Pricket Candleholders with knopped baluster stems and domed spreading bases each stamped with initials MG NG NF IB, *43.5cm. overall*, 17th/18th Century
- 113\* A Pair of small brass Ice Pails of plain form with shell ears at lip, *11cm.*, 18th/19th Century (2)
- 114\* A bell-metal two-branch Candleholder with knopped stem and low spreading base, the branches cast with trefoils and having turned finial, *28.5cm.*, 17th Century
- 115\* A rare brass revolving Serving Ring, *38cm. diam.*, 18th Century
- 116\* A Dutch brass Brazier Stand on plate base embossed with floral swags, *28cm. diam.*, 18th Century, and a Scandinavian repoussé brass Chalice and Cover, *27.5cm.* (2)
- 117\* A pierced and repoussé brass Corner Mount in the form of a winged angel blowing a trumpet, his other hand resting on a skull, *36cm. high*, probably Dutch, 17th Century
- 118 A Dutch brass Tobacco Box with low relief scenes from the Gospels on lid and base, *15.6cm. long*, 18th Century
- 119 A cylindrical French Litre Measure by Leclerc of Lille, with circular cover falling inside a sloping collar, *21.5cm.*, 19th Century
- 120 A Pair of Iberian Candlesticks in the style of circa 1700, having squat baluster stems and cylindrical sockets raised on bulbous bases with tuck-in feet, *14cm. high* (2)
- 121 A set of six French lidless cylindrical Measures from ½-litre to centi-litre capacities all by the maker RG, *14.5cm. to 4.2cm.*, 2nd half 19th Century (6)
- 122 A Flemish Dish with single-reeded rim by the maker FDK, *29.8cm. diam.*, early 19th Century, the reverse with a presentation military inscription dated 1944

- 123 A Continental Plate engraved around the top of the rim with a consecration inscription in Greek dated 1780, *26.6cm.*, 18th Century
- 124 A Normandy pot Flagon of typical shouldered form, the heart-shaped lid with twin-acorn thumbpiece, *26.5cm. high*, circa 1800
- 125\* An Iberian pewter Flagon of baluster form with enclosed spout at front and plain domed cover with erect thumbpiece, *20.3cm. overall*, early 18th Century
- 126\* Another of similar general outline but without spout, *20cm. high*
- 127\* A small broad-rimmed deep Bowl with gadrooned border, *15cm. diam.*, probably Spanish, 18th Century
- 128 A set of three George IV ribbed Tavern Measures, having brass rims, from quart to half pint capacity, early 19th Century (3)
- 129 A circular Dish with single-reeded rim initialled M at top, *46.4cm. diam.*, a plain-rimmed Dish with touchmark and owner's initials MC on reverse, *46.1cm. diam.*, and a smaller plain-rimmed Dish with deeper booge, initialled MH on rim, *37.2cm.*, all 18th Century (3)
- 130 A glass-bottomed Tankard by Watts & Harton with domed cover and palmette thumbpiece, the front inscribed as a Rowing Trophy dated 1850, *20.5cm.*, and another of similar general type, *20cm.* (dented cover), both mid-19th Century
- 131 A Dish with single-reeded rim by John Duncombe stamped with owner's initials at top, *46cm. diam.*, 18th Century
- 132 An oblong hot-water Serving Dish with baluster handles made by Samuel Cocks, *55cm. long*, and two circular hot-water Plates by the same maker, *20cm. diam.*, circa 1820 (3)
- 133 A Pair of Plates with single-reeded rims initialled <sup>ss</sup> by the maker William Birch (?en) Shaw (touch as Cott. no. 549)<sub>ps</sub>, *23.5cm. diam.*, circa 1750, and a Continental Plate by an Antwerp maker, *24cm.*, 18th/19th Century (3)

- 134 A plain-rimmed Dish by Stynt Duncumbe, initialled T<sup>WA</sup> ad verso, 33.7cm. diam., a Plate by the same maker, 23cm., both 18th Century, and two Plates probably by Watts & Harton, 24cm. and 24.6cm., 19th Century (4)
- 135 A plain-rimmed Dish inscribed A1 at top, indistinct touch on reverse, 46cm. diam., 18th Century
- 136 A Stuart Dish with multiple-reeded border to the rim by the maker IP (compare with Cott. no. 5871), 46cm. diam., circa 1680-1700
- 137 A Queen Anne Tankard of cylindrical form with ovolo-moulded foot rim, the double-domed cover with ram's-horn thumbpiece and 'cut card' decoration to the handle top, maker's touch of TB with a lion inside base, 17.8cm. overall, circa 1700-1715
- 138 A baluster-shaped Wine Measure of quart capacity with flat circular cover and 'bud' thumbpiece, the lip stamped with maker's touch of GM, 21.4cm. high, circa 1700-1730
- 139 A Dish with single-reeded rim initialled SS at top, made by Nehemiah Cloudesley, 38cm. diam., circa 1700
- 140 A circular plain-rimmed Dish with stamped triad T<sup>RM</sup> ad verso, 33.5cm., and another larger with crowned initials ET ad verso, 37.5cm., both circa mid-18th Century (2)
- 141 A lidless baluster-shaped Ale Jug with cylindrical collar and spout at front, 15.5cm., early 19th Century, a U-shaped quart tavern Mug with scrolled handle, 17cm., and a similar pint Mug, 12.7cm., 19th Century (3)
- 142\* A large double-handled Posset or Wassail Cup of bucket-shape with narrow reeded foot and flared lip, one side applied with a cast medallion bearing the arms of James II, the handles with turned down terminals, 17cm. high

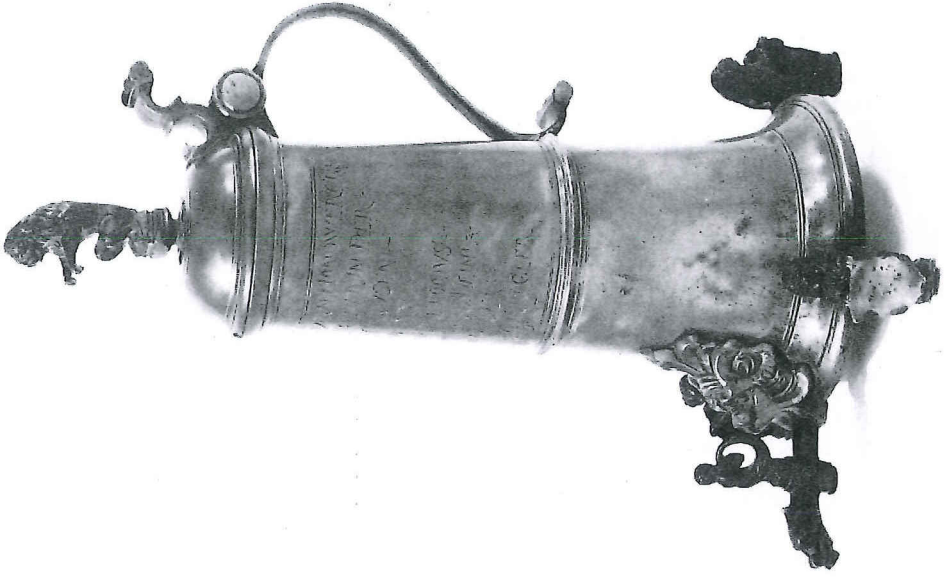
- 143 A FINE LARGE GERMAN GUILD FLAGON by the Master Christoph Marx of Nuremberg (see Hintze vol. 2, no. 339), the domed lid with baluster-moulded 'bent-back' thumbpiece, the tapering drum having moulded girdle and a relief-cast bronze tap in the form of a mermaid riding a sea monster issuing from the mouth of an applied grotesque mask at base, the whole raised on three lion feet bearing shields and having cover knob en suite, the drum inscribed with names of members of the Creüssen guild of Signmakers with the date (of incorporation?) 1609, 63cm. overall, circa late 17th Century (shield on cover wanting)

*(See Illustration)*

END OF SALE



106



143