

Days of Sale

WEALDEN ROOM

Oak and Country Furniture

Tuesday 31st March 1992 at 10.30 am

WEALDEN ROOM

Textiles, Metalwork and Works of Art

Tuesday 31st March 1992 at 2.00 pm

On View: Friday 27th March 1992, 10.00 am–4.00 pm,
Saturday 28th March 1992, 9.30 am–12.30 pm and Monday 30th March 1992, 10.00 am–4.00 pm

CISSBURY ROOM

Good Glass, British and Continental Ceramics

Wednesday 1st April 1992 at 10.30 am

On View: Saturday 28th March 1992, 9.30 am–12.30 pm,
Monday 30th March 1992, 10.00 am–4.00 pm and Tuesday 31st March 1992, 10.00 am–4.00 pm

WEALDEN ROOM

Oriental Carpets and Rugs

Tuesday 7th April 1992 at 10.30 am

On View: Friday 3rd April 1992, 10.00 am–4.00 pm,
Saturday 4th April 1992, 9.30 am–12.30 pm and Monday 6th April 1992, 10.00 am–4.00 pm

CISSBURY ROOM

Doulton and Worcester

Wednesday 8th April 1992 at 10.30 am

On View: Saturday 4th April 1992, 9.30 am–12.30 pm,
Monday 6th April 1992, 10.00 am–4.00 pm and Tuesday 7th April 1992, 10.00 am–4.00 pm

which will be sold

by

SOTHEBY'S
FOUNDED 1744

Sussex

Summers Place, Billingshurst, West Sussex RH14 9AD

Telephone: (0403) 783933

Fax: (0403) 785153

Illustrated Catalogue £10.00

Sotheby's London: Registered at 34-35 New Bond Street, London W1A 2AA
No. 1222607

Front Cover: Lot 72 Back Cover: Lots 345, 346, 347



359

357

358

344 **A STRAW-WORK RECT-ANGULAR CASKET, French Prisoner of War, circa 1800**, the lid decorated with a basket of flowers, the interior with architectural views, 26cm.; 10¼in. wide; together with two relief carved coco-demer Shells, 23cm.; 9in. wide £300-500

(For colour illustration see back cover)

345 **A COLLECTION OF FOUR OCTAGONAL TEA CANISTERS, English, 19th Century**, each painted with gilt Chinoiserie decoration on a green ground and numbered 1, 2, 5 and 6, 44cm.; 17½in. £1,000-1,500

(For colour illustration see back cover)

346 **A SIMILAR LOT**, numbered 7, 8, 9, 10, 44cm.; 17½in. £1,000-1,500

(For colour illustration see back cover)

347 **A SIMILAR LOT**, numbered 11, 14, 16, 17, three with maker's stamp of John A. Gilbert & Co., London, 44cm.; 17½in. £1,000-1,500

348 **A TIN OCTAGONAL LANTERN, Persian, 19th Century**, with glass panels and domed cover pierced with foliage, 92cm.; 36in. £300-400

349 **A STEEL INLAID RECT-ANGULAR CASKET, Continental, 19th Century**, decorated with putti in foliate borders and mounted winged caryatids, 18cm.; 7in. wide; together with a pierced rectangular Casket, Continental, 19th Century, each panel decorated with vine leaves, 20cm.; 9in. £300-500

350 **AN IVORY GROUP OF A LION AND A SNAKE, Continental, 18th Century**, formerly a finial, 8cm.; 3in. £400-600

351 **AN ARMORIAL STAINED GLASS PANEL, English, 16th Century**, painted with the arms of the Earls of Salisbury surrounded by the inscription William Longespee and Earl of Salisbury 1226, 30.5cm.; 12in. £300-500

352 **A GILT-BRASS CROSS, German, 15th/16th Century**, now set with a relief of the Virgin and Child with pierced crowns at each end, 39cm.; 15½in. £300-400

353 **A MOTHER-OF-PEARL DISH, Ottoman, early 18th Century**, of segmented form with petal rim, some minor damages, 17.5cm.; 7in. diam. £400-600

For a similar dish see lot 368 sold in these rooms 4th February 1992.

354 **TWO EMBROIDERED BARK CARD CASES**, the largest 10.5cm.; 4¼in.; and a bone Abacus Frame £60-100

355 **A STRAW-WORK AND OIL PAINT PICTURE, Venetian School, 18th Century**, depicting figures and townscapes in a pastoral setting, in 'japanned' frame, on canvas, 42 by 57cm.; 16½ by 22½in. £400-600

356 **A STAINED AND LEADED GLASS RECTANGULAR PANEL, German, 16th Century**, depicting 'The Agony in the Garden', Christ flanked by two sleeping Disciples looking towards an angel proffering a chalice, minor damages, 67 by 51cm.; 26½ by 20in. £150-200

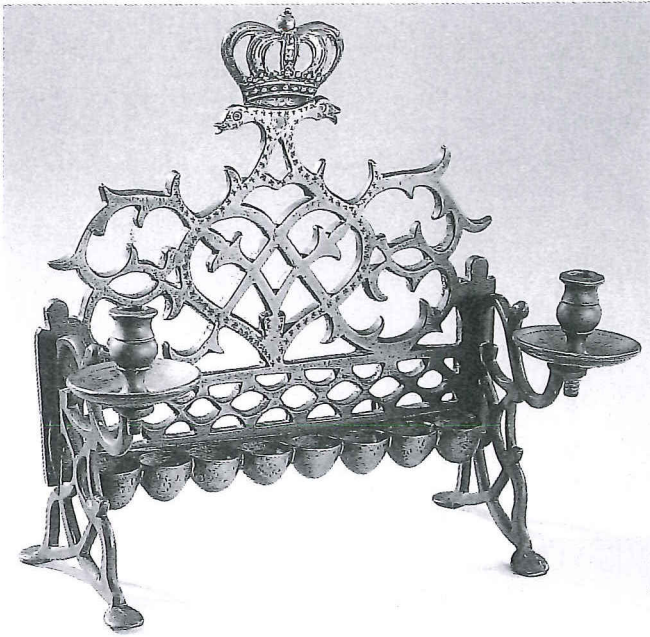
PEWTER

357 **A POT-BELLIED LIDDED MEASURE, Scottish, circa 1700**, of usual shape, the body with engraved ownership initials, the domed lid possibly replaced, the inside of the base inscribed in high relief IOHN ROSS MADE BE, AR (sic), 25cm.; 9¾in. £500-700

For a similar set of measures see lot 788 sold in these rooms 11th November 1991.

358 **A COMMUNION FLAGON, Scottish, circa 1800**, by Wm. Scott of Edinburgh, of usual tapering cylindrical form, 25cm.; 10in. £200-300

359 **A LIDDED MEASURE, French, 18th Century**, of shouldered form with heart-shaped lid and twin acorn thumbpiece, the rim stamped with a crowned AB and crowned touch of ND with a hammer, 24cm.; 9½in. £200-300



377

360 **A COLLECTION OF PLATES AND DISHES, Continental, 19th Century**, comprising: sixteen side plates by various makers, 21cm.; 8¹/₄in. average diam., and three bowls, 29cm.; 11¹/₂in. average diam.; and a reproduction Candlestick (20) £300-400

361 **A SINGLE REEDED RIM CHARGER, English, 18th Century**, ownership initials *E.S.* to rim, 51cm.; 20in. diam. £150-200

362 **TWO JELLY MOULDS, Victorian, circa 1880**, each with fruit basket tops, 16cm.; 6¹/₂in. £150-200

363 **A POUNCE POT, German, late 18th Century**, with baluster body and domed lid, 13cm.; 5in.; together with a pair of Holy Water Cruets, *Continental, late 18th Century*, 12cm.; 4³/₄in. (3) £120-180

364 **A DOUBLE-DOMED LID TANKARD, Georgian, circa 1750**, with pear-shaped body and open chair-back thumbpiece, 19cm.; 7¹/₂in. £150-200

365 **A LIDDED ALE JUG BY SANDERS & SONS, Georgian, circa 1800**, of usual bulbous shape with double volute thumbpiece, 18cm.; 7in. £180-220

366 **A LIDDED QUART CAPACITY TANKARD, Georgian, circa 1800**, the plain cylindrical body with the touch of the maker *S.C.*, 20cm.; 8in. £150-200

367 **A LIDDED FLAGON, Belgian, early 19th Century**, by the maker *I.W.*, 25cm.; 10in.; a Coffee Pot, *Continental*, 21cm.; 8¹/₄in.; two Plates; a Pepper; and a Mustard (6) £250-350

368 **A PORRINGER BY PAULO GUISEPPE MACIAGO, Visp, Switzerland**, with twin pierced ears, 24cm.; 9in. wide overall £150-200

See Erwin Hintze, 2401.

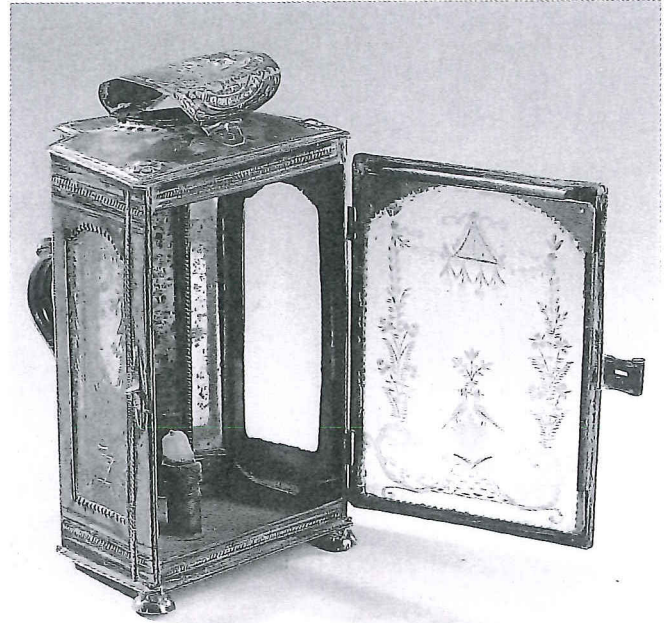
369 **A DISH BY STYNT DUNCOMBE OF BEWDLEY, circa 1760**, 33cm.; 13in.; another by *William Smith, damaged rim*, 38cm.; 15in.; and three further assorted Dishes or Plates (5) £150-250

370 **A FLAGON BY W. BALDWIN OF WIGAN, 18th Century**, the slightly tapering body with a single raised fillet and 'hallmarks' (*Cott. O.P. No. 213*), the domed cover with eagle thumbpiece and the handle with unusual raised mask and heart terminal, on wide foot, 33cm.; 13in. £1,000-1,500

For a similar example see Peter R. G. Hornsby, *PEWTER of the Western World*, plate 677.

371 † **A COMMUNION FLAGON BY THE MAKER M.C., Scottish, late 18th Century**, of usual form with flat lid and tapering body, with single girdle, touch mark in base, 26cm.; 10in. £150-200

372 **A PAIR OF CHARGERS BY SAMUEL ELLIS, circa 1730**, the plain rims with ownership triad initials, 46cm.; 18in. diam. £400-600



389

BRASS, COPPER AND OTHER METALWORK

373 **A SET OF FOUR BRASS WALL BRACKETS, Dutch, 19th Century**, each with ball and baluster backplate supporting scrolled branches, 38cm.; 15in. £200-300

374 **A PAIR OF BRASS CANDLESTICKS, French or English, circa 1720**, each with hexagonal base and faceted baluster stem, 16.5cm.; 6¹/₂in. £200-300

375 **A BRASS ALMS DISH, German, 17th/18th Century**, of plain circular form with flowerhead boss, 49cm.; 19¹/₂in. £200-300

376 **A BRASS ALMS DISH, German, 17th/18th Century**, with flowerhead punched rim and stylised boss, 38.5cm.; 15¹/₄in. £200-300

377 □ **A BRASS HANUKAH LAMP, Polish, 18th Century**, with a row of eight oil reservoirs flanked by candle nozzles, with a pierced backplate surmounted by a crown, 28cm.; 11in. £500-700

378 **A PAIR OF BRASS CANDLESTICKS, Scandinavian, early 19th Century**, each with tapering cylindrical stem, applied with two bands of guilloche, 25cm.; 10in. £100-200

379 □ **A PAIR OF BRASS CANDLESTICKS BY THE MAKER E.K., Georgian, circa 1750**, each with knopped stem and petal base, 20cm.; 7³/₄in. £300-400