

E 1-702

Oak, Country Furniture, Folk Art and Works of Art

Wednesday, 5 November 1997 at 1.00 p.m.

In sending commissions or making enquiries, this sale should be referred to as **FRN-7781**

Viewing:

Saturday	1 November 1997	10.00 a.m. - 1.00 p.m.
Monday	3 November 1997	9.00 a.m. - 7.30 p.m.
Tuesday	4 November 1997	9.00 a.m. - 5.00 p.m.
Wednesday	5 November 1997	9.00 a.m. - 1.00 p.m. (restricted)

Enquiries for this sale:

Specialists

Nic McElhatton (Works of Art)	0171-389 2794
Simon Green (Furniture)	0171-389 2793

Client Services

Victoria Wolcough	0171-321 3111
-------------------	---------------

Accounts

Frank Haas (Credit Control)	0171-321 3305
Louise Croucher (Vendors)	0171-321 3259

Automated Results 0171-321 3221

Commission Bids and Results 0171-321 3225

(an automated queueing system operates on these lines and clients are put through as quickly as possible)

Bids Office Fax Number 0171-581 1403

Front cover illustration: lot 908

Back cover illustration: lot 825

† (daggered) lots indicate that VAT at the prevailing standard rate is payable by the buyer on the final bid price (hammer price), plus buyer's premium.

* (starred) lots indicate that VAT at the reduced rate of 2.5% is payable on the final bid price (hammer price), plus buyer's premium.

Internet:

For more information about Christie's Services and Forthcoming Sales, you can use the Internet at Address <http://www.christies.com>

LotFinder:

This is a new service for buyers. For more information please see page 3

Christie's South Kensington

85 Old Brompton Road, London SW7 3LD
Telephone: 0171-581 7611 Fax: 0171-321 3321



634

634

A pair of Charles II style pewter candlesticks, early 20th century

the square column shafts each with twin gouged parallel channels running vertically to each side, intersected by central banded knobs below everted flat rims to the sockets, on flanged and stepped moulded bases, the underside of each base applied with a printed paper lable inscribed *THE GENUINENESS OF THIS PIECE GUARANTEED BY MR HOWARD H. COTTERELL*, and numbered in ink 1361 — 8½in. (21.6cm) high, the bases — 6½in. (15.6cm) sq
See Illustration. (2)

LITERATURE:

Howard Herschell Cotterell, *Great Pewter Collections II-Treasures in the Rollason Collection (Part I)*, Apollo, April 1934. See fig.IV.

£400-600

635

A pewter footed plate, possibly late 17th or early 18th century

with triple reeded rim, on a capstan-shaped support above a further reeded base — 8in. (20.3cm) diam
See Illustration.

Provenance:

Ex Bertie Isher Collection, Bruton Knowles, April 1976, lot 179.

£400-600

636

A large James I straight sided pewter flagon, circa 1600

of typical form, with 'erect' thumbpiece and knopped lid, the owner's initials *P.P.* punched to the back of the thumbpiece — 13¾in. (35cm) high, to top of the thumbpiece, diameter at base — 5¾in. (14.6cm); the inside of the lid applied with a printed paper lable inscribed *THE GENUINENESS OF THIS PIECE GUARANTEED BY MR HOWARD H. COTTERELL*, and numbered in ink 1253; and with a certificate of authenticity inscribed and signed and dated by Howard H. Cotterell, 1 Jan 1933.
See Illustration.

£600-1,000

636
635637
638

637

A Victorian pewter bowl

in the style of an earlier period, with everted rim, the underside of the bowl applied with a printed paper lable inscribed *THE GENUINENESS OF THIS PIECE GUARANTEED BY MR HOWARD H. COTTERELL*, and numbered indistinctly in ink — 10½in. (25cm) diam
See Illustration.

638

A Stuart style flat lidded tankard

of typical form, with triple cusp thumbpiece — 6½in. (16.5cm) high
See Illustration. (3)

£200-300

639

A pair of Commonwealth style trumpet base pewter candlesticks, early 20th century

the cylindrical banded knob shafts, with single reeded mid drip pans, of circular dished form, below flat everted rims to the sockets, on spreading circular bases, the underside of each applied with a printed paper lable inscribed *THE GENUINENESS OF THIS PIECE GUARANTEED BY MR HOWARD H. COTTERELL*, and numbered in ink 1351 — 8½in. (21.5cm) high
See Illustration. (2)

LITERATURE:

Howard Herschell Cotterell, *Great Pewter Collections II-Treasures in the Rollason Collection (Part I)*, Apollo, April 1934. See fig.V.

£300-500

634



890

890

An oak dresser, North Wales, mid 18th century

the boarded plate-rack with moulded cornice and plain frieze, above three open shelves and two small cupboards with central oval decorative motif, the breakfront base with four central drawers between reeded angles high-lighted with chequer inlay and with shaped dentil type frieze, flanked by a drawer and cupboard door with outer brass-mounted quarter-column angles, on square feet — 70in. (178cm.) wide

See Illustration

The breakfront dresser is typically associated with the island of Anglesey and this example displays particularly fine embellishments, note the decorative technique of burning the inlay to achieve a striped effect within the ovals on the small cupboard doors.

£3,000-5,000

VARIOUS PROPERTIES

891

A set of three Victorian graduated pewter and brass rimmed measures

of tapering form, from quart to half pint capacity; two further brass rimmed pewter baluster measures, by *W.R. LOFTUS* of half and quarter gill capacity; and a Victorian pewter goblet, of half pint capacity

(6)

£200-400

892

892

An oak dresser, North Wales, early 18th century

the boarded plate-rack with moulded cornice and serpentine frieze

above shaped sides and three shelves, the base with moulded rim and plain frieze above three small central drawers flanked by a pair of twin-fielded panel doors, all with moulded edges to the raised panels, on stile feet — 64½in. (164cm.) wide

See Illustration

£4,000-6,000

893

A Channel Islands lidded pewter measure, 18th century

with double acorn thumbpiece — 10½in. (26.5cm) high; and another Channel Island pewter measure, the thumbpiece damaged

(2)

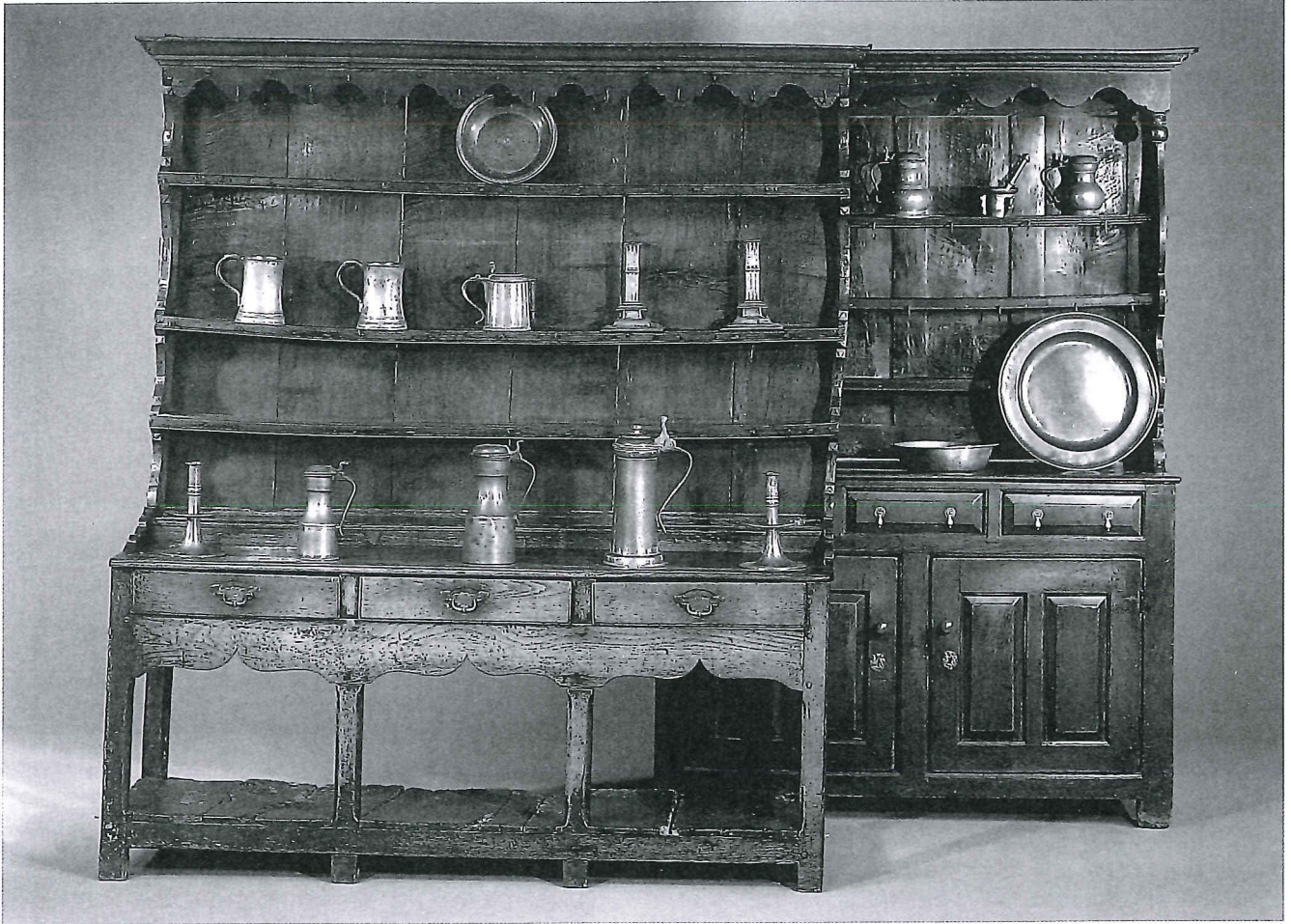
£200-400

894

A pair of Victorian pewter tankards

by James Yates, of pint capacity, waisted outline; and a collection of nine pewter plates, 19th century

(11)



895

898

895

An oak dresser, South Wales, late 18th century

the boarded plate-rack with moulded cornice and serpentine frieze, above three shelves with moulded fronts and metal hooks, one shelf with a spoon-rack, the base with a raised channelled superstructure above three frieze drawers and ogee arched apron, on square faceted legs joined by a potboard — 70in. (178cm.) wide

See Illustration

£3,000-5,000

898

An oak dresser, North Wales, early 18th century

the boarded plate-rack with moulded cornice and serpentine frieze with drop pendants, the shaped sides with three shelves with metal hooks and displaying wedged tennons to the sides, the base with three frieze drawers, the outer two with concealed catch for locking, above a pair of twin fielded panel doors, on stile feet — 57in. (145cm.) wide

See Illustration

Please see note prior to lot 854

£3,000-4,000

896

A French pewter food container, 18th century

of bucket-shape, with incised and raised reeded ornament, cherub masks to the rim supporting the swing handle — 7in. (17.7cm) diam

897•

A collection of eleven various pewter chargers, late 18th and early 19th century

the largest — 18½in. (46cm) diam; the smallest — 14in. (35.5cm) diam (11)

£300-500

899

A pewter bowl, mid 18th century

by Humphrey Evans, with reeded rim, maker's touch to the base — 11½in. (28.2cm) diam; two pewter bellied and lidded tankards, 19th century; and a bronze lugged mortar and pestle, early 17th century (5)

£150-250