

GAJ

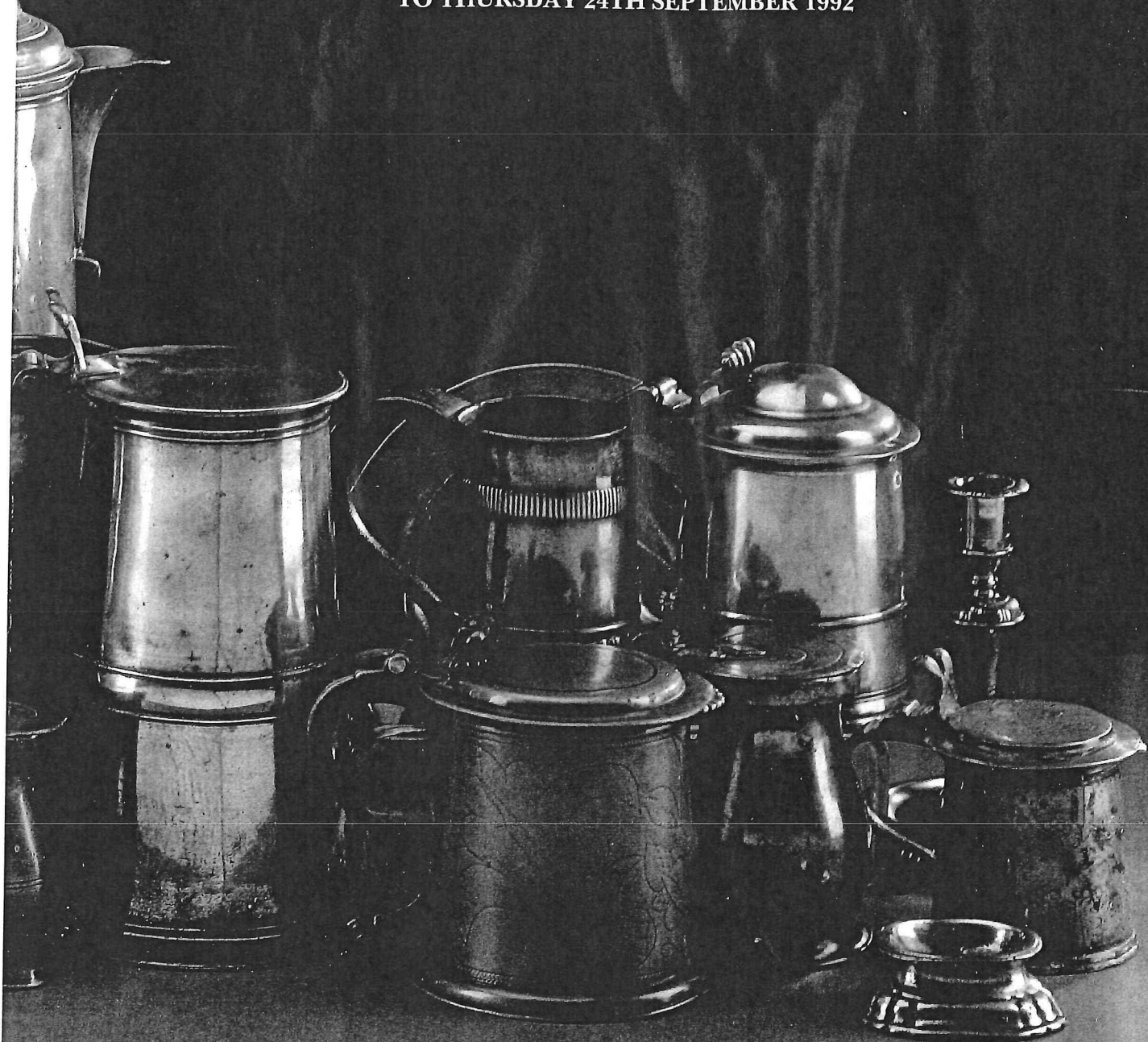
SOTHEBY'S

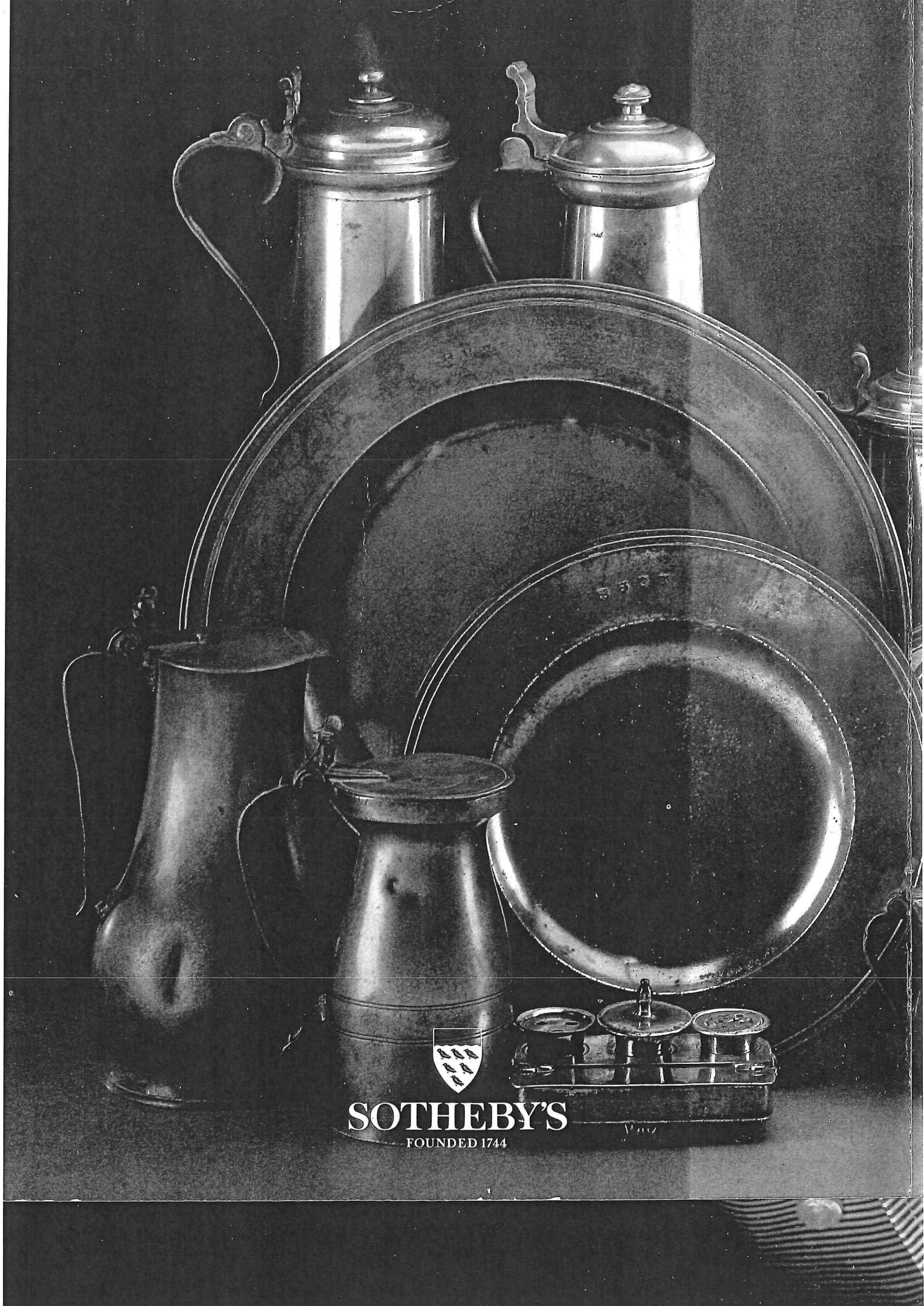
FOUNDED 1744

Oriental Carpets and Rugs, Doulton and
Worcester, Oak and Country Furniture,
Textiles and Works of Art, Metalwork
and Pewter, Glass and Ceramics

SUSSEX

TUESDAY 15TH SEPTEMBER 1992
TO THURSDAY 24TH SEPTEMBER 1992





SOTHEBY'S
FOUNDED 1744

Metalwork and Pewter

TUESDAY 22ND SEPTEMBER 1992 AT 2.00 PM

Expert in charge: MARK STEPHEN (0403) 783933

All lots offered subject to the Conditions of Business printed in the back of this catalogue and to reserves.

▣ = See illustration ⊠ = See colour illustration



1172

1173

1174

BRITISH AND CONTINENTAL PEWTER

THE COLLECTION OF RALPH BOOCOCK ESQ. REFERENCE BOOKS

1167 **COTTERELL H.H.: OLD PEWTER, its makers and marks,** Batsford 1929; Peal C.A.: *More Pewter Marks*, 1976; and addenda, 1977 (3) £70-90

1168 **INGLEBY WOOD L.: SCOTTISH PEWTER-WARE AND PEWTERERS,** Massé H.J.L.J.: *Pewter Plate*, Bell 1904; Antonio de Navaro: *Causeries on English Pewter*; Cotterell H.H.: *National types of old Pewter 1925 and 1972 revised edition*, and *Pewter down the ages with marks pamphlet*. (7) £100-150

1169 **MASSÉ H.J.L.J.: CHATS ON OLD PEWTER, 1919;** and the pewter collector, 2nd edtn; Malcolm Bell: *Old Pewter 1913*; *The Church Plate of Essex, 1926*; Michaelis R.P.: *Antique Pewter of the British Isles*; Gale E.S.J.: *Pewter and the amateur collector 1910*. (6) £80-120

1170 **MISCELLANEOUS BOOKS AND PAMPHLETS,** including: Hatcher and Barker: *A History of British Pewter*; Massé: *The Pewter Collector*, revised editn. etc. (18) £70-100

1171 **HORNSBY P.: Pewter of the Western World;** Michaelis R.F.: *Old Domestic Base-Metal Candlesticks*; Peal C.: *Pewter of Great Britain*, Gifford 1983, **Homer, R.F.:** *Five Centuries of base metal spoons* (unbound copy); and three further books (8). £50-80

1172 ▣ **A JAMES I FLAGON, circa 1610,** with knopped 'bun' cover, ridged erect thumbpiece stamped with the initials H L P, on domed ovolo moulded foot, 29cm.; 11½in. £1,500-2,000

1173 ▣ **A JAMES I FLAGON, circa 1615,** with knopped 'bun' cover, and erect thumbpiece, corrosion, 29cm.; 11¼in. £800-1,200

1174 ▣ **A CHARLES I FLAGON BY THE MAKER E.G. circa 1635,** with knopped 'bun' cover and erect heart-pierced thumbpiece, on spreading moulded foot (O.P. 5614A), 29cm.; 11¼in. £2,000-2,500

1175 ▣ **A DOMED LID FLAGON, circa 1720,** with unusual palmette and mask thumbpiece, tapering body engraved with a ribbon-tie swag and dated 1732 & 1733, touch on handle T.B. (O.P. 5469, and M.P.M. 5466A) on a domed tapering foot, 28cm.; 11in. £1,200-1,600



1175

1176

1177



1179

1178

1180

1181

1176 □ A CHARLES II 'BEEFEATER' FLAGON, circa 1660, the flat cover with a row of hallmarks and with a twin cusped thumbpiece, on wide moulded foot, indistinct makers touch in base, 24.5cm.; 9½in. £1,500–2,000

Illustrated in Cotterell O.P. XXXVIIa. Cotterell attributes the flagon to Robert Marten (3092), although the indistinct makers touch does not appear to be particularly similar.

1177 □ A WILLIAM & MARY OR QUEEN ANNE FLAGON, circa 1700, with straight sided tapering hammered body, scroll thumbpiece and domed cover, the cover with a large hole and other damage, 29cm.; 11½in. £500–800

1178 □ A GEORGIAN SPIRE FLAGON, third quarter 18th Century, with knopped domed cover, spouted tapering body and domed foot, engraved under base 'The gift of Mr Tho^s Owen for the use of Queen Street Chapel', 35cm.; 14in. £500–800

1179 □ A GEORGIAN SPIRE FLAGON, third quarter 18th Century, similar to the preceding lot but with acorn finial, beaded lower rim and hallmarks in base, 29cm.; 11½in. £400–600



1186

1191

1190

1188

1188



1183

1182

1184 A NORMANDY FLAGON, 19th Century, of usual shouldered form with heart shaped lid and twin acorn thumbpiece, 26cm.; 10¹/₄in. and a similar smaller flagon, 20cm.; 8in. (2) £250-350

1185 A SIMILAR LOT OF TWO NORMANDY FLAGONS, 19th Century, each with inscribed ownership to handle, 27cm.; 10¹/₂in; and 22cm.; 8¹/₂in. £250-350

1186 □ A NORMANDY LIDDED MEASURE, late 18th Century, of shouldered form with heart shaped lid with twin acorn thumbpiece, touch of A.F. and ownership initials A H D 23cm.; 9in. £150-250

1187 □ A JERSEY MEASURE BY JOHN DE ST.CROIX, 18th Century, touch under lid (O.P.1360), and ownership initials to handle, 36 fl oz capacity, 20.5cm.; 8in. £300-500

1188 □ A SWISS GLOCKENKANNE, late 18th Century, the cylindrical body with a band of relief cast grape vines, screw on ring top and cylindrical front spout, 36cm.; 14in; and a smaller similar flask, 28cm.; 11in. £600-900

1189 A GERMAN TAPERING LIDDED FLAGON, late 18th Century, with ball thumbpiece and three winged angel mask feet, 30cm.; 12in. £150-250

1190 □ A FRENCH LIDDED MILK CAN, 18th Century, the heart shaped lid with indistinct touch and date 1722, above tapering body, 25cm.; 9³/₄in. £200-300

1180 □ A FLAGON BY JOHN NEWHAM, early 18th Century, with knopped domed cover and scroll thumbpiece, touch under base (O.P. 3372), 34cm.; 13¹/₂in. £400-600

1181 □ A GEORGIAN FLAGON, late 18th Century, with open chairback thumbpiece and acorn finial, on wide domed foot, 35cm.; 14in. £500-800

1182 □ A SCOTTISH COMMUNION LAVER BY GRAHAM & WARDROP, circa 1790, with twin-cusp thumbpiece, tapering moulded girdle body, engraved ownership initials and touch in base, 25cm.; 9³/₄in. £400-600

1183 □ A SCOTTISH COMMUNION LAVER BY ROBERT KINNIBURGH, circa 1800, of similar form, 27cm.; 10¹/₂in. £400-600



1192

1193

1194

1191 **□ A SWISS LIDDED MEASURE, 18th Century**, the heart shaped lid with the touch of Pierre Machin and a stamp of two crossed muskets crowned, and twin pomegranite thumbpiece, 23cm.; 9in. £200-300

1192 **□ A DOMED LID TANKARD BY RICHARD GOING, early 18th Century**, the brim with ownership initials A.W. and scroll thumbpiece, the straight sided body with a single girdle, touch in base (O.P. 1909) 15cm.; 6in. £1,000-1,500

1193 **□ A TULIP SHAPED LIDDED TANKARD BY INGRAM AND HUNT, circa 1780**, with palmette thumbpiece, touch in base I & H (O.P.5708), 19cm.; 7½in. £500-800

Homer and Hall: Provincial pewterers, plate 29.

1194 **□ A DOMED LID TANKARD, early 18th Century**, the straight sided tapering body with a single girdle, and rams horn thumbpiece, touch in base of a bird possibly that of Adam Banck (O.P. 222A). 19cm.; 7½in. £1,000-1,500

1195 **□ A QUEEN ANNE TAVERN POT, circa 1705**, the tapering body with two raised bands, ownership initials E H to handle and later engraved cartouche, with a crowned W capacity stamp?, 12.5cm.; 5in. £700-1,000



1195

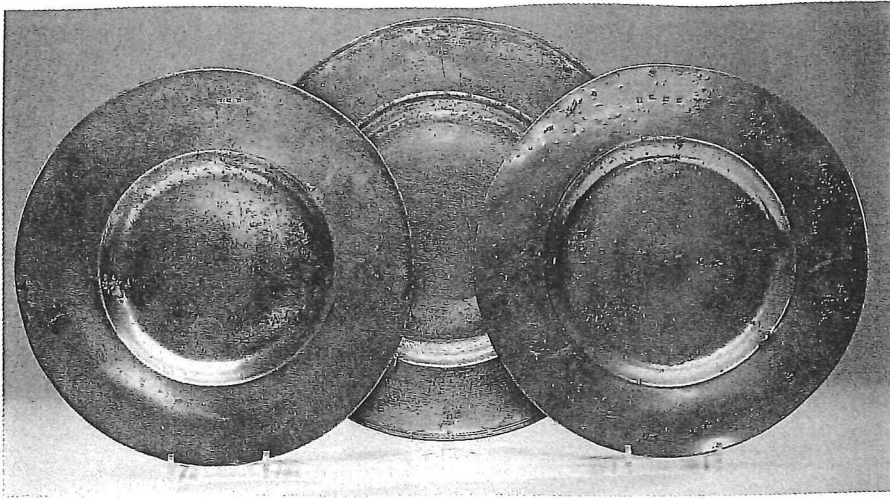
1196

1196 **□ A QUEEN ANNE TAVERN POT BY WILLIAM HUX, circa 1705**, the tapering body with a reeded upper band and gadrooned lower band, William III capacity mark, ownership initials H.I. to handle, touch in base (O.P. 2498), restored at top front rim, 13cm.; 5in. £1,500-2,000

1197 **A LIDLESS TAVERN MUG, late 18th Century**, straight-sided body with a town stamp, and handle with ball terminal, 9cm.; 3½in.; and a similar ½ pint mug with Wm III, Wm IV and VR capacity stamps £300-400

1198 **A SMALL REEDED TAVERN MUG, late 18th Century**, the straight sided tapering body inscribed Adam Thwaite, 7cm.; 2¾in.; a barrel shaped mug by Warne & Co; 9cm.; 3½in.; a miniature straight sided tapering mug with VR capacity stamp; and two wide squat mugs, circa 1800 (5) £150-200

1199 **A COLLECTION OF TAVERN MUGS, 19th Century**, comprising a straight sided Quart, a tulip shaped pint by I Banck? (O.P.227), another by James Yates, and two further pint mugs (5). £200-300



1202

1201

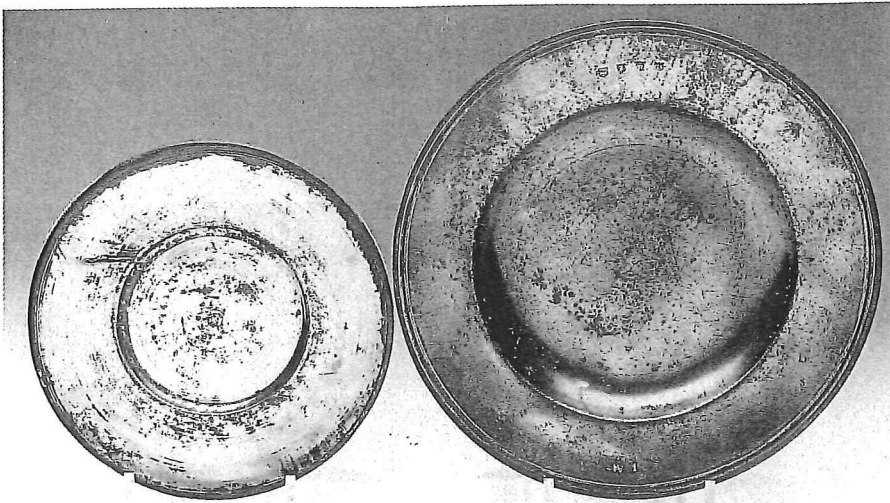
1200

1200 □ A CHARLES II BROAD RIM DISH, circa 1670, by the maker M N, hallmarks to rim and indistinct touch adverso, 42cm.; 16½in.; the rim 8cm.; 3in. £300-500

1201 □ A CHARLES II CHARGER BY JOHN CAVE, circa 1670, hallmarks and initials E S to rim and touch adverso (O.P.857), 46.5cm.; 18¼in., the rim 8cm.; 3¼in. £400-600

1202 □ A CHARLES II BROAD RIM DISH, circa 1670, indistinct hallmarks to rim, 42.5cm.; 16¾in.; the rim 9cm.; 3½in. £300-500

1203 □ A BROAD RIM PLATE BY GEORGE SMITH, circa 1681, hallmarks to reeded rim and initialed I M, touch adverso (O.P. 4347), 31cm.; 12in. £400-600



1204

1203

1204 □ A CONTINENTAL BROAD RIM PLATE BY CLAUDE MORANT, 23cm.; 9in.; the rim 5cm.; 2in. £200-300

1205 □ A NARROW REEDED RIM PLATE BY JOHN DOLE, circa 1700, hallmarks and ownership triad to rim, 23cm.; 9in. £200-250

1206 □ A TRIPLE-REEDED RIM DISH BY W. BALDWIN, circa 1700, the narrow rim with hallmarks, and touch adverso (O.P.213), 31cm.; 12¼in. £200-300

1207 □ A LATE STUART NARROW RIM PLATE, circa 1690, triple reeded rim with hallmarks of the maker W P and ownership initials E B, 24cm.; 9½in. £200-250

1208 □ AN UNUSUAL BOWL WITH SINGLE REEDED RIM AND BUMPY BOTTOM, touch appears to be that of Richard White 1695-1750 (O.P.5097) although the bowl would appear to be earlier, 26.5cm.; 10½in. £250-350

1209 □ A BOWL BY SAMUEL COCKS, early 19th Century, with multiple reeded rim inscribed 'UNDER SOUTH GALLERY begins at WEST END' (O.P.1004) 25cm.; 9¾in. £200-300

1210 □ A BROAD RIM BUMPY BOTTOM DISH, 17th Century, ownership R S to rim and indistinct touch adverso, 27.5cm.; 10¾in. £300-500

1211 A STUART BROAD RIMMED DISH, circa 1670, with engraved coat of arms damages, 32cm.; 12½in.; another by the maker B.T. (O.P. 5468), damages 34.5cm.; 13½in.; and a broad rim plate of Stuart design, 25.5cm.; 10in. (3). £300-500

1212 A TRIPLE-REEDED RIM DISH BY JOHN BARLOW, circa 1700, hallmarks to rim and touch adverso, 34cm.; 13½in., £250-350



1205

1206

1207



1208

1209

1210

1213 A SET OF FOUR NARROW REEDED RIM PLATES BY JOHN HULLS, circa 1700, each with ownership initials W S, and touch adverso (O.P.2452), 21.5cm.; 8½in. £400-600

1214 A STUART TRIPLE REEDED RIM PLATE BY THE MAKER I D, circa 1680, hallmarks and ownership R P to rim, touch adverso (O.P. 5550), 22cm.; 8¾in. and another similar by Richard Smith (O.P.4374), (2). £300-400

1215 A SET OF FIVE PLATES BY EDWARD NASH, circa 1720, hallmarks, touch and ownership adverso (O.P. 3347), 23.5cm.; 9¼in. and a similar plate by George Grimes (6). £250-350

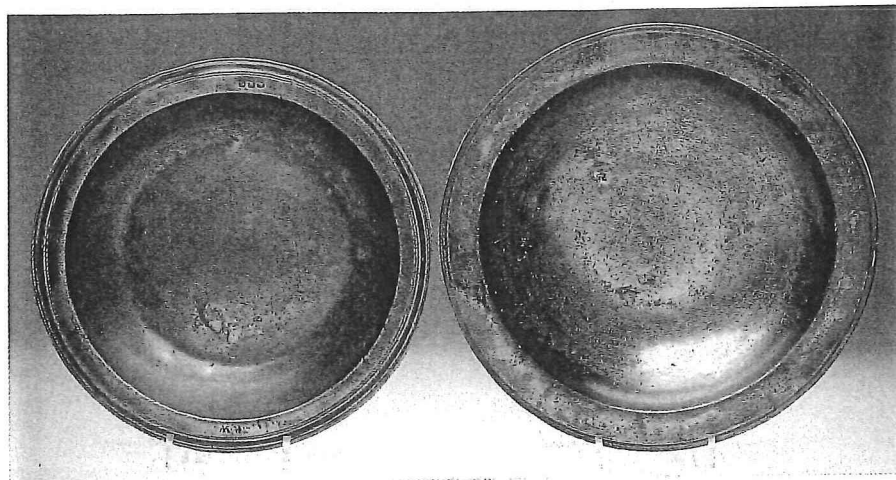
1216 A STUART NARROW RIM PLATE, circa 1680, with hallmarks by the maker R T, 23cm.; 9in; and another similar, damaged, 23cm.; 9in. (2). £200-300

1217 A STUART NARROW REEDED RIM PLATE, circa 1680, touch of the maker T.S.(O.P.5951), 21cm.; 8in; and another similar, 20cm.; 8in. £250-350

1218 A TRIPLE REEDED RIM DISH, circa 1700, indistinct hallmarks to rim, 30cm.; 11¾in; and a narrow reeded rim flat dish 32.5cm.; 12¾in. (2) £300-500

1219 A TRIPLE REEDED RIM BOWL, circa 1690, indistinct hallmarks and ownership R W to rim, 35cm.; 14in. £200-300

1220 A REEDED RIM BOWL, circa 1690, the rim with a row of four hallmarks of the maker I.B., 38cm.; 15in. £200-300



1219

1220

1221 A COLLECTION OF FOUR PLATES, 18th Century, comprising one by Thos. Collett, 25cm.; 9¾in; another by Samuel Smith, 21cm.; 8¼in; a reeded rim plate and a plain plate (4) £120-180

1222 A PAIR OF WAVY EDGED PLATES BY THOMAS ALDERSON, circa 1800, each with touch adverso, 24cm.; 9½in. £200-300

1223 A PAIR OF PLATES BY BOURCHIER CLEEVE, circa 1750, engraved crest to rim, and touch adverso (O.P.962), 25cm.; 9¾in; and a plate with similar crest by Henry Maxted (3) £100-200

1224 A RECTANGULAR DISH BY THOMAS ALDERSON, circa 1820, the reeded rim inscribed 'Larder', 61cm.; 24in wide £300-500

Alderson made the pewterware for the coronation banquet of George IV.

1225 A GEORGE IV CORONATION PLATE BY THOMAS ALDERSON, circa 1820, 25cm.; 9¾in, and a plate by Thomas Groce, circa 1740, 18cm.; 7in (2) £200-300

1226 A PLATE WITH GREAT YARMOUTH TOWN STAMP TO RIM, 18th Century, 23cm.; 9in; a plate by John Ingram of Bewdley inscribed 'Milton Chapel', 24cm.; 9½in. and a small plate by James Hitchman with touch in front centre, 20cm.; 8in. (3). £150-250



1227 Part

1228

1229



1233

1227 □ AN APOSTLE 'TELLER' IN THE STYLE OF HANS SPATZ OR PAUL OHAM OF NUREMBERG, cast with the resurrection within border of apostles, 19cm.; 7½in.; and another similar later teller (2). £500-800

1228 □ A CONTINENTAL ENGRAVED DISH, early 18th Century, with gadrooned and beaded rim, decorated with flower scrolls and a chalice, three touches of angel with deer and scales possibly a Worms maker 30cm.; 11¾in. £300-500

1229 □ A WRIGGLE-WORK PLATE, circa 1700, decorated with a flowering plant within single reeded rim, 21.5cm.; 8½in. £300-500

1230 A CONTINENTAL EMBOSSED PLATE, decorated with the Baptism of Christ within a gadrooned and star stamped rim, 26.5cm.; 10½in. £200-300

1231 A COLLECTION OF THREE BOWLS, late 18th/early 19th Century, the largest 23.5cm.; 9¼in.; and a commode pot, 24cm.; 9½in (4) £200-300

1232 A TUREEN BY SAMUEL COCKS, early 19th Century, oval on claw and ball feet, two engraved crests to rim and touch under base (O.P.1004), 34cm.; 13½in. £300-400

1233 □ A WILLIAM III BEADED TAZZA, circa 1690, the stem with a single girdle, the rim and foot with beaded decoration, 22cm.; 8¾in diam. £300-400

1234 A NAROW RIMMED TAZZA, circa 1720, with domed foot and touch of William ?, 26cm.; 10in diam. £200-300



1239

1237

1238

1236



1246

1245

1244

1244

1246

1241

1235 A DOMED FOOT TAZZA, circa 1700, stamped G R B to rim, on gadrooned knopped stem and domed foot, 21cm.; 8¹/₄in diam; and another similar, damaged, 21.5cm.; 8¹/₂in. (2) £300-500

1236 □ A 'BUD' BALUSTER MEASURE, early 18th Century, of Quart capacity, the lid with the touch of G.Lowes and a crowned GR capacity stamp and ownership initials G B (O.P.3001), 21.5cm.; 8¹/₂in. £500-700

1237 □ A 'BUD' BALUSTER MEASURE, early 18th Century, of pint capacity, touch on rim by maker T M (O.P.5800), 16.5cm.; 6¹/₂in. £250-400

1238 □ A SIMILAR 'BUD' BALUSTER MEASURE, early 18th Century, indistinct touch to rim and ownership W I to lid, 16.5cm.; 6¹/₂in. £250-400

1239 □ A 'BUD' BALUSTER MEASURE, circa 1700, of half pint capacity, 14cm.; 5¹/₂in. £200-300

1240 TWO 'BUD' BALUSTER MEASURES, circa 1700, of Quart and half pint capacity, both with the makers touch I L, the Quart with crowned HR, the Quart lacking lid and thumbpiece. £300-500

1241 □ A 'DOUBLE-VOLUTE' BALUSTER MEASURE, mid 18th Century, of Quart capacity, 20cm.; 8in. £350-500

1242 A SIMILAR QUART BALUSTER MEASURE, mid 18th Century, 19.5cm.; 7³/₄in. £350-500

1243 TWO 'DOUBLE-VOLUTE' BALUSTER MEASURES, mid 18th Century, of pint and half pint capacities, the pint 15cm.; 6in. £300-500



1249

1249

1249

1247

1244 □ TWO SIMILAR MEASURES, mid 18th Century, the pint by the maker W F, the half pint by the maker I F, the pint 15cm.; 6in. £300-500

1245 □ A SIMILAR GILL MEASURE, mid 18th Century, with crowned William III verification to lid, 10cm.; 4in. £100-150

1246 □ A 'DOUBLE-VOLUTE' BALUSTER MEASURE, mid 18th Century, of pint capacity with HR capacity mark and ownership C W to lid, and a matching gill measure with similar marks (2). £300-500

1247 □ A QUART UNLIDDED BALUSTER MEASURE, circa 1760, touch under base by the maker M.R. (Peal M.P.M. 5898B), 19cm.; 7¹/₂in. £200-300

1248 A PINT UNLIDDED BALUSTER MEASURE, late 18th Century, the rim with GR stamp, and a half pint measure, 13cm.; 5¹/₄ to 10cm.; 4in. £180-220

1249 □ THREE UNLIDDED BALUSTER MEASURES, late 18th Century, comprising pint, half pint and gill, 13cm.; 5in to 8cm.; 3in. £200-300

1250 THREE FURTHER SIMILAR MEASURES, the pint with town mark? of three castle turrets £200-300

1251 FOUR BALUSTER MEASURES, late 17th/early 18th Century, comprising a Quart, two pint and a gill, all missing lids, one pint still with 'bud' thumbpiece, the quart 19cm.; 7¹/₂in. £400-600

1252 A COLLECTION OF NINE IRISH LIDLESS MEASURES, 19th Century, comprising seven of baluster form, two half pint, four gill, half gill and two straight sided 1/4 gill. £250-350

1253 A COLLECTION OF TEN MEASURES, 19th Century, comprising six pot bellied lidless measures, the tallest 8cm.; 3in; a straight sided tapering half gill, 7cm.; 2³/₄in; and three further small measures. £150-200



1255

1259

1258

1187

1261 part



1262

1263 part

1263 part

1262

1262

1254 **A JERSEY UNLIDDED NOGGIN MEASURE**, circa 1800, 4 fl oz capacity, 9.5cm.; 3³/₄in. and two unlidded baluster measures, 18th Century, 11cm.; 4¹/₄in and 6cm.; 2¹/₂in. (3). £200–300

1255 **A SCOTTISH POT-BELLIED LIDLESS MEASURE**, early 18th Century, of usual form, lid lacking, 14cm.; 5¹/₂in. £200–300

1256 **THREE IRISH HARVEST MEASURES BY JOSEPH AUSTEN OF CORK**, circa 1830, of pint, half pint and gill capacities, the pint 15cm.; 6in. £300–500

1257 **A HALF GALLON WEST COUNTRY HARVEST MEASURE**, 19th Century, together with a matching Quart measure, the larger 20cm.; 8in. £400–600

1258 **A LIDDED ALE JUG**, early 19th Century, of usual form with engraved crest and domed lid, 19cm.; 7¹/₂in. £180–220

1259 **A SIMILAR SMALLER JUG**, early 19th Century, 15cm.; 6in. £120–180

1260 **A LIDLESS ALE JUG**, early 19th Century, of spouted baluster form of pint capacity, 11cm.; 4¹/₄in; and another with straight sided tapering body with banded base, 15cm.; 6in. (2) £180–220

1261 **A CONTINENTAL JUG**, early 19th Century, with relief cast foliate and beaded decoration to handle, touch under base 'ALEGRE. AN' ? with a triple headed eagle, 18cm.; 7in. £120–180

1262 **A DUTCH COFFEE POT**, late 18th Century, with stop-fluted cylindrical body and beaded cover, 20cm.; 8in; and a similar smaller, 17cm.; 6³/₄in; and a wrythen chocolate pot with wooded side handle, 9cm.; 3¹/₂in. (3). £300–500

1263 **A COLLECTION OF FOUR TEA OR COFFEE POTS**, Dutch late 18th/early 19th Century, three of pear shape, and one with straight sided body, 17cm.; 6³/₄in on average, £250–350

1264 **A PAIR OF IRISH CHALICES**, early 18th Century, each with thick knopped stem, 21.5cm.; 8¹/₂in. £350–500

1265 **A PAIR OF CHALICES**, Georgian 1736, each with ring turned stem and engraved inscription dated 1736, 16cm.; 6¹/₄in. £300–500

1266 **A BALL-KNOPPED CHALICE**, North Country of Scottish, circa 1700, damages, 21cm.; 8¹/₄in; and a chalice with ring turned stem on domed foot, 20cm.; 8in; (2) £250–400

1267 **A CONTINENTAL CHALICE**, with domed foot and screw-in ball knopped stem, 16.5cm.; 6¹/₂in; and a small Continental chalice, 17th Century, with touch of hammer flanked by initials L.?.9cm.; 3¹/₂in. (2). £200–300



1264

1266

1266

1264



1265

1268 A GEORGIAN CHALICE, circa 1800, with plain cup shaped bowl engraved with ownership initials, 14cm.; 5½in.; and a 'U' shaped beaker or chalice, 13cm.; 5in. (2) £200-300

1269 A BLEEDING BOWL BY MAW & SON, early 19th Century, of cup form with loop side handle and three gradations, the bowl 13cm.; 5in diam; and another taller 11cm.; 4¼in high. (2). £250-350



1270

1270 □ A LATE STUART PORRINGER, circa 1680, with single pierced ear stamped with four owners initials, and touch under base of an anchor flanked by initials I ? , and inscribed 'John Archer died 1740', the bowl 13cm.; 5in diam. £200-300

1271 A TWIN EARED PORRINGER, Continental, circa 1700, touch of I ? H R above a rose, both ears damaged, the bowl 13cm.; 5in diam. £150-250

1272 A TWIN HANDLED LOVING CUP, 18th Century, indistinct hallmarks to body, 8cm.; 3in; and two later loving cups each with scroll handles, the taller 16cm.; 6¼in. (3) £150-250



1279

1280

1282

1281

1278

1282

1279

1281


1280




1273

1274

1273

1273  A PAIR OF RING TURNED BEAKERS BY THE MAKER T.I. of half pint capacity each with touch and hallmarks (Peal, M.P.M. 5742B), 9cm.; 3 1/2in. £150-200


1274  A DUTCH WRIGGLE-WORK TEA CADDY, 18th Century, of tapering form decorated with flowers, 13cm.; 5in. £200-250


1275 A SWISS BOWL BY GOLDNER OF LAUSANNE, early 19th Century, with a band of relief cast leaf decoration, 10.5cm.; 4 1/4in; a half pint cup with single loop handle, and a cup shaped bowl on foot 15cm.; 6in. (3). £150-200


1276 A COLLECTION OF SEVEN WINE CUPS OR EGG CUPS, A pair inscribed Thompson 1805, 6.5cm.; 2 1/2in; and five further of similar shape each on foot, 7 to 4.5cm.; 2 3/4 to 1 3/4in. £200-300

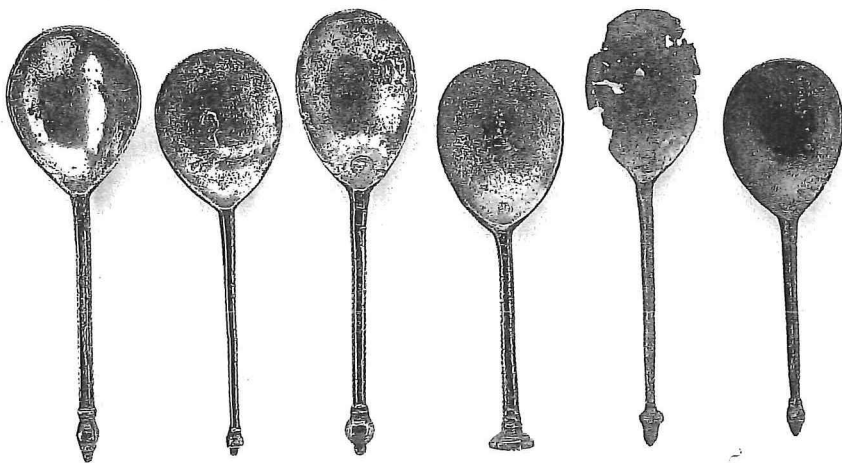
1277 THREE WINE CUPS OR SALTS, circa 1800, each on domed foot with reeded rim, 7cm.; 3 3/4in; and a double ended cup measure ? 8cm.; 3in. (4) £100-150

1278  AN OVAL TRENCHER SALT, circa 1700, on rounded domed canted base, 9cm.; 3 1/2in wide. £200-300
Part illustrated

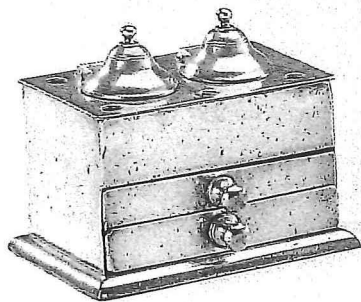
1279  A COLLECTION OF FIVE CUP SALTS, circa 1770-1800, each with waisted socle on domed foot with reeded rim, 8cm.; 3in high on average. £250-350
Part illustrated

1280  A COLLECTION OF BULBOUS SALTS, 18th Century, each on a shallow domed foot, 6.5 to 5cm.; 2 1/2 to 2in. (5)
Part illustrated £120-180

1281  A CYLINDRICAL FOOTED CAPSTAN SALT, early 18th Century, 8cm.; 3in wide; a bulbous salt by the maker R.J. 4cm.; 1 3/4in high, a similar salt, and two small shallow cup salts (5) Part illustrated £120-180



1285



1296



1295




1297

1282  A PAIR OF CUP SALTS BY W.J.ENGLEFIELD, early 20th Century, 4cm.; 1 1/2in high; three octagonal base cup salts, and a pair of round base cup salts, 6cm.; 2 1/4in. (7) £200-300
Part illustrated

1283 A DUTCH TOBACCO JAR AND COVER, early 19th Century, canted rectangular with domed cover and urn finial on four rococo swirl feet, 16.5cm.; 6 1/2in. £200-300


1284 A COLLECTION OF SEVERN PEPPERS OR CASTORS, 18th/19th Century, 13 to 10cm.; 5 to 4in.; and two holy water cruets, 12cm.; 4 3/4in.; (9). £300-500

1285  A COLLECTION OF SIX SPOONS, 16th/early 17th Century comprising an acorn knopp, two urn and acorn knopps, a hexagonal knop, a seal top and a baluster top, three with indistinct touch marks, the tallest 16.5.; 6 1/2in. £300-400

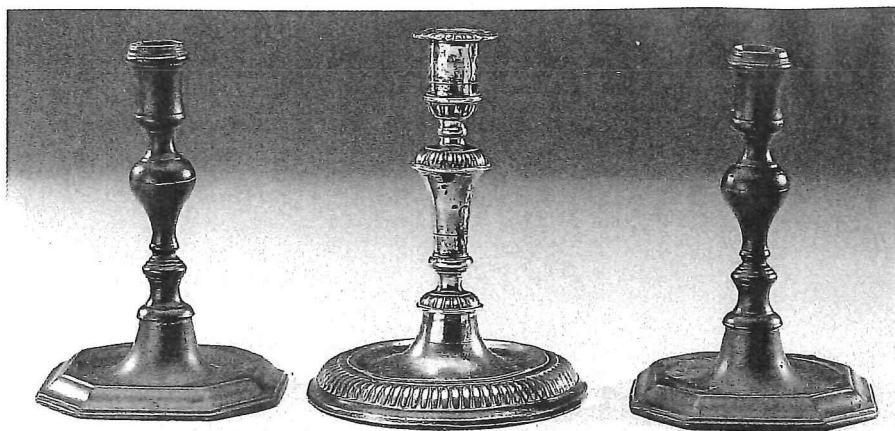
1286 A COLLECTION OF SPOONS, Dutch and English, 17th Century, including three slip tops, three stump tops and a puritan spoon, all with touch marks, the tallest 18cm.; 7in. (7). £200-300

1287 A PAIR OF WALL LIGHTS, each with pierced confronting lion backplate supporting a scrolled candle branch, 31cm.; 12 1/4in. £200-300

1288 A PAIR OF BALUSTER STEM CANDLESTICKS, circa 1830, each with circular base, 22cm.; 8 3/4in.; and a pair of ball-knopped column candlesticks, circa 1830, 19cm.; 7 1/2in. £120-180

1289  A PAIR OF BALUSTER STEM CANDLESTICKS, early 18th Century, each with canted rectangular dished base 16cm.; 6 1/4in. £300-500

1290 A BELL-BASED CANDLESTICK OF DUTCH 17TH DESIGN, with vase shaped stem, 24cm.; 5 1/2in. £100-150



1289

1293


1289

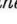
1291 A CONTINENTAL CANDLESTICK, 18th Century, with faceted domed base and octagonal vase stem, 18cm.; 7in.; and a faceted stem candlestick with later foot, 20cm.; 8in. (2). £200-300


1292 A PAIR OF CORINTHIAN COLUMN CANDLESTICKS OF GEORGE III DESIGN, 24cm.; 9 1/2in.; and a pair of tapersticks each with baluster stem, circa 1840, 10cm.; 4in. (4) £200-300

1293  A GADROONED BASE CANDLESTICK, Continental 18th Century, with gadrooned vase knopped stem, 17cm.; 6 3/4in. £200-300

1294 A GERMAN OIL LAMP, the domed dished base dated 1847, supporting slender stem with mid drip pan and reservoir top, 23cm.; 9in. £100-150

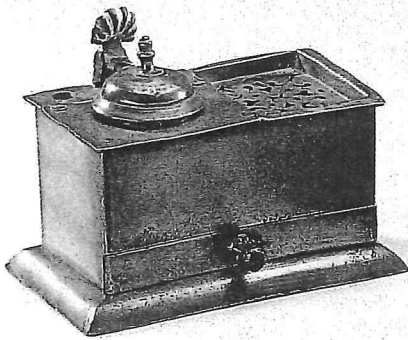
1295  A LARGE RECTANGULAR STANDISH, circa 1790, the dished base supporting three lidded pots raised on ball feet with one long drawer below, 28.5cm.; 11 1/4in. wide. £400-600

1296  A RECTANGULAR INKSTAND BY JAMES STANTON, early 19th Century, with two domed well covers above body with two drawers (O.P.4480), 10cm.; 4in. £200-300

1297  A SIMILAR INKSTAND, circa 1800, with single domed well cover and two drawers, 10cm.; 4in. £150-200

1298 A RECTANGULAR INKSTAND, 19th Century, with three domed well covers and body with one drawer on plinth base, 16.5cm.; 6 1/2in. wide. £100-150

1299 A RECTANGULAR INKSTAND, early 19th Century, with three covers, one inscribed 'black', on half ball feet, 16cm.; 6 1/4in. wide. £100-150



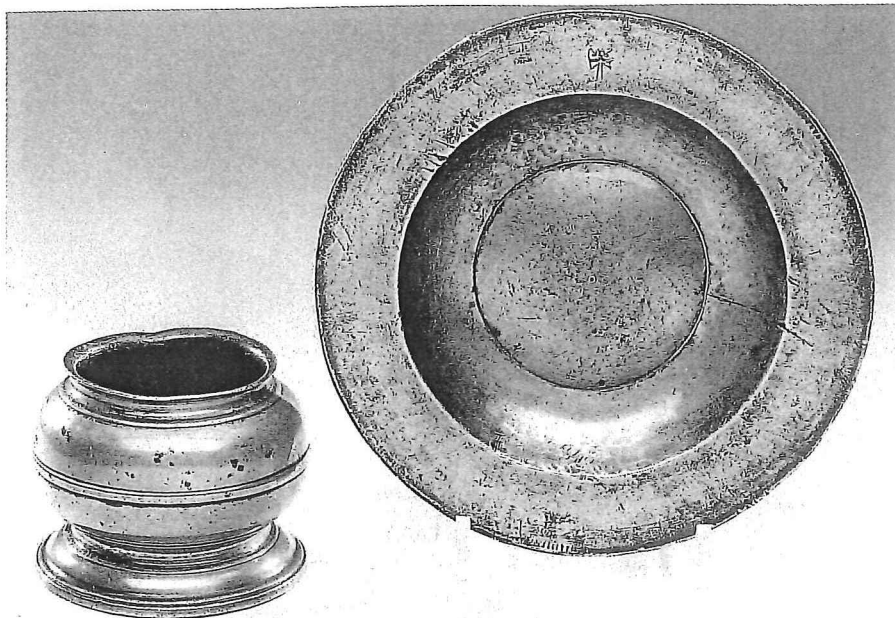
1304



1305
1306



1303



1313

1314

1300 A TREASURY TYPE INKSTAND, English circa 1800, with double hinged flap top on half ball feet. 21cm.; 8 1/2 in. wide. £200-300

1301 TWO SIMILAR SMALLER TREASURY INKSTANDS, circa 1800, 16cm.; 6 1/2 in. wide. £250-400

1302 A DUTCH STANDISH BY THE MAKER A I, Amsterdam, mid 18th Century, with single well and domed cover, a sand pot and a drawer on plinth base, 13cm.; 5 in. wide. £150-200

1303 A SIMILAR INKSTAND, Amsterdam, mid 18th Century, £150-250

1304 A SIMILAR INKSTAND, Dutch, mid 18th Century, by the maker L.B.?, 13cm.; 5 in wide. £150-250

1305 A DUTCH INKSTAND, 18th Century, rectangular with swelling baluster body, one well and sand pot, touch of maker W.L. 6cm.; 2 1/2 in.; and a similar cylindrical inkstand, 8cm.; 3 1/4 in diam. £300-500

1306 A DUTCH STANDISH, late 18th Century, the body with single flap on three scroll feet supporting three containers, 14cm.; 5 1/2 in wide. £300-400

OTHER PROPERTIES

1307 AN OVAL BRITANNIA METAL HOT-WATER DISH, circa 1840, with turned wood side handles, 53cm.; 21 in.; and an oval pewter dish, 40cm.; 16 in. (2). £150-200

1308 A SET OF SIX PLATES BY A. NICHOLSON, circa 1730, each with engraved coat-of-arms (O.P.3397), 24.5cm.; 9 3/4 in.; and four further plates, three by John Duncombe (10) £400-600

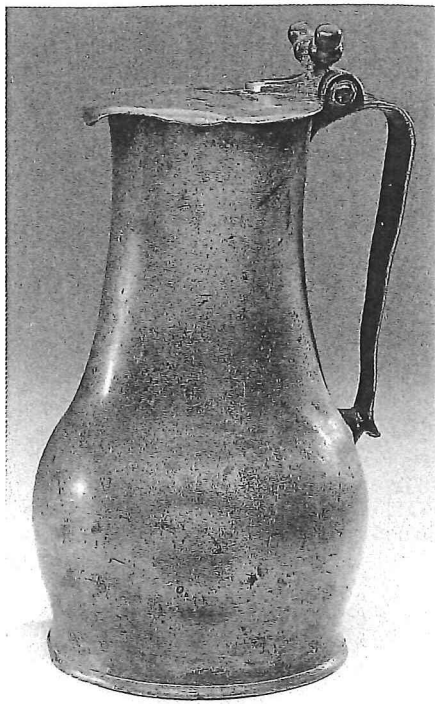
1309 A COLLECTION OF EIGHT POT-BELLIED LIDLESS BALUSTER MEASURES, 19th Century, assorted from pint to 1/4 gill. £150-250

1310 A PAIR OF TRIPLE-REEDED RIM DISHES BY THE MAKER R M, circa 1690, hallmarks to rim and touch adverso (O.P. 5791), 42cm.; 16 1/2 in. £400-600

1311 A QUART CAPACITY TAVERN MUG, Victorian, of straight sided tapering form; a lidded Quart trophy tankard with glass bottom; and a lidded small tankard with the hallmarks of the maker S.C. circa 1800, 13cm.; 5 in. (3) £200-300

1312 A NORMANDY LIDDED FLAGON, early 19th Century, of usual shouldered form with twin acorn thumbpiece, 26cm.; 10 in.; and another similar (2) £350-450

1313 A LARGE BULBOUS FOOTED SALT, circa 1730, the body with single raised girdle, 9.5cm.; 3 3/4 in high £300-500



1322

1314 **■ A BUMPY BOTTOM PLATE, English circa 1480**, with rowel and spur mark to the rim, 23.5cm.; 9 1/4in.

£1,000-1,500

1315 **A GEORGIAN CHALICE, circa 1780**, tapering with single girdle on a ball knopped stem, 19cm.; 7 1/2in.; and a double-sided conical measure, 8cm.; 3 1/4in. (2)

£150-200

1316 **A DOUBLE-VOLUTE BALUSTER MEASURE, late 18th Century, restored foot rim**, 20cm.; 7 3/4in.

£200-300

1317 **A CRESTED TAPPIT HEN, probably late 18th century**, of usual shouldered form, 31cm.; 12in.

£350-450

1318 **A PAIR OF CHARGERS, Georgian 18th Century**, each with single-reeded rim, indistinct touch and initials to rim, 42cm.; 16 1/2in.

£150-200

1319 **A SET OF SIX QUART TAVERN MUGS, mid 19th Century**, by George Farmiloe & Sons, each straight-sided tapering with single raised girdle, inscribed with monogram F W and 'The Railway tavern, Strand',

£300-400

Provenance by repute: purchased by Judge Watts from the Railway tavern, Strand, Charring Cross, and thence by descent.



1323

1320 **A TRIPLE-REEDED RIM DISH BY ADAM BANCKES, circa 1680**, hallmarks to rim and touch adverso, 34.5cm.; 13 1/2in.; and another similar by George Smith, 38cm.; 15in. (2).

£300-500

1321 **A NORMANDY LIDDED MEASURE, late 19th Century**, 23cm.; 9in.; and a similar smaller measure (2)

£200-300

1322 **■ A JERSEY LIDDED MEASURE BY JOHN DE ST CROIX, circa 1780**, of usual form with touch under lid and ownership S D C to handle, 27cm.; 10 7/8in. Also see back cover

£250-400

1323 **■ A GOOD CHARLES II 'WRIGGLE-WORK' FLAT-LIDDED TANKARD, circa 1675**, the domed cover with a flowering plant and love-bird thumbpiece and denticulated brim, the body with a tulip flanked by two leaves, touch of the maker G.F. in base (Peal M.P.M. 5580C) 15cm.; 6in. See also front cover

£4,000-6,000

For a wriggled-work tankard with similar proportions and thumbpiece see 'The Worshipful Company of Pewterers catalogue of pewterware' plate 19 (No.171)

1324 **A PEWTER WINE BOTTLE DRAINER, English circa 1770**, of baluster form with openwork neck raised on three struts, 23cm.; 9in.

£300-500

See the Worshipful Company of Pewterers Supplementary Catalogue of Pewterware, 1979, page 93, and Hornsby: Pewter of the Western World plate 1238.

1325 **A CHARGER BY JOSEPH SPACKMAN, late 18th Century**, with plain rim, 51.5cm.; 20 1/4in.; and an oval dish by Townsend and Compton, 52cm.; 20 1/2in.; (2)

£250-350



1331

1326 **MISCELLANEOUS PEWTER, 19th/early 20th Century**, including a reproduction tappit hen, two pot bellied lidless measures, three tavern mugs, a hot water jug, a teapot, two flasks, a jelly mould and other items (15)

£200-250

1327 **THREE PLATES BY JOHN DUNCOMBE, 23cm.; 9in.**; six small reproduction plates, two hot-water plates and a rectangular hot-water dish (12).

£150-200

1328 **A SET OF SEVEN METRIC MEASURES, French 19th Century**, each of straight-sided lidded form, from double litre to centilitre, touch of C or F le Seigneur ú Caen 1806, 25.5 to 6cm.; 10 to 2 1/2in.

£300-400

1329 **A COLLECTION OF TWELVE SPOONS, 19th Century**, and a French painted wood spoon rack (13).

£150-200

1330 **A PAIR OF CANDLESTICKS, late 19th Century**, each with vase and beaded plinth base, 24cm.; 9 1/2in.

£150-200

1331 **■ A RARE PUNCH DECORATED FLAT-LIDDED TANKARD BY LAWRENCE ANDERTON OF WIGAN, circa 1655-60**, with twin-cusp thumbpiece and stylised floral punch decoration to lid and body, touch in base of L.A. (O.P.5386), 12cm.; 4 3/4in.

£4,000-6,000

See also front cover

EX A.T. Isher Collection, lot 202, Apr 27/28 1976 Bruton Knowles. See the Journal of the Pewter Society vol 8, No 3, 1992, photo 13. Punch decorated hollow-ware is extremely scarce, for a discussion see Thomas C Campbell: Rare examples of decorated English Pewter, 'The Antique Collector' April 1983.



1333

1332 A WILLIAM III SPOON BY STEPHEN BRIDGES, circa 1696, the 'trifid' end with relief cast portrait bust of the monarch and a crowned W R amidst foliate scrolls, similar foliate decoration to back of bowl, 18cm.; 7in £150-200

Recovered from the shipwreck Henrietta Marie sunk of the coast of Jamaica in 1701.

1333 □ A WILLIAM AND MARY WRIGGLE-WORK TANKARD, circa 1690, decorated with twin portraits and a crowned monogram within leaf scroll border, lid lacking, base possibly replaced, indistinct touch in base, solder repairs to handle, 13cm.; 15in. £800-1,200

BRASS & COPPER

1334 A BRASS FIVE BRANCH CHANDELIER, Dutch 18th Century design, the ball and baluster stem supporting scrolled branches, 42cm.; 16½in. £300-500

1335 A COPPER OCTAGONAL WALL SCONCE, Dutch, possibly circa 1700, embossed with foliage, lacking candle branches, 53cm.; 21in. £200-300

1336 A BRASS CYLINDRICAL JARDINIÈRE, Dutch circa 1800, with lion mask ring handles and applied copper coats-of-arms, 28cm.; 11in. £200-300

1337 A BRASS ALMS DISH, German 19th Century, embossed with Hercules and the Nemean lion, 43cm.; 17in.; and another smaller (2) £250-350

1338 A PAIR OF BRASS AND GLASS SHIP'S LANTERNS BY DAVEY & CO, circa 1900, each of 'lobster pot' form with oil burners, 40cm; 16in £300-500



1339

1339 A COLLECTION OF EIGHT COPPER HARVEST MEASURES, 19th century, usual bulbous form, graduated from 2 gallon to ½ gill, the largest 33cm; 13in £500-600

1340 A COPPER GRAPE PANIER, French 19th century, of tapering cylindrical form with arched hood, 81cm; 32in £260-300

1341 A DUTCH BRASS EIGHT BRANCH CHANDELIER, 19th century, the ball and baluster stem supporting scrolled branches, 88cm; 35in £1,500-2,000

1342 A REGENCY COPPER AND BRASS MOUNTED HOT WATER URN, circa 1820, spherical body with ring side handles and ball finial, 46cm; 18in £200-300

1343 A BRASS GRAPE PANIER, the tapering cylindrical body embossed with a scene from classical mythology, 81cm; 32in £200-300

1344 A DUTCH BRASS AND COPPER ASHBIN, circa 1800, with cylindrical tapering body on three ball feet, 38cm; 15in £200-300

1345 AN EMBOSSED BRASS CIRCULAR TRAY, Continental 19th century, decorated with a coat of arms within a foliate border, 76cm; 30in diam; together with an engraved copper Islamic tray (2) £300-500

1346 A SET OF SIX COPPER HARVEST MEASURES, 19th century, graduated from 4 gallon to 1 pint capacity, the largest 38cm; 15in £500-800

1347 A BRASS PRESERVING PAN WITH IRON HANDLE, 36cm; 14in diameter £80-120

1348 A COPPER AND BRASS MOUNTED TEA URN, Victorian circa 1840, the bulbous body with foliate side handles with domed cover on shaped base with ball feet, 40cm; 16in £200-300

1349 A BRASS FOOTMAN TRIVET, circa 1840, the heart pierced top with bow front pierced apron and steel cabriole legs, 36cm; 14in wide £150-250

1350 A COLLECTION OF THREE COPPER BOWL SHAPED PRESERVING PANS, 51cm; 20in diameter £180-250

1351 A BRASS FOOTMAN TRIVET, circa 1840, the rectangular top with shaped apron and cabriole legs, 53cm; 21in wide £250-350

1352 A LARGE COPPER COFFEE POT, circa 1800, the tapered cylindrical turned body with side handle, 35cm; 14in £200-300

1353 A CANTED RECTANGULAR ENGRAVED TOBACCO BOX, Dutch 18th Century, engraved with scenes from the old testament, and the apostles, 15cm.; 6in long. £250-350

1354 AN EMBOSSED CYLINDRICAL JARDINIÈRE, 19th Century, with lion mask ring handles, 33cm.; 13in; a brass preserve pan, and a copper fying pan and lid (3). £150-200

1355 A SHEET IRON TRIVET, early 19th Century, with a radiating pierced top on cabriole legs, 33cm.; 13in; and a Victorian brass trivet, 33cm.; 13in. (2). £180-220

1356 A CAST-BRASS TRIVET, Victorian, circa 1840, the plain rectangular top with side cast handles, above cabriole legs, 28cm.; 11in. £150-200

1357 □ A COLLECTION OF TWELVE ENGRAVED BRASS DOOR LOCKS, late 19th Century, engraved in the Georgian style with flower scrolls, each lock with a sliding bolt and a locking bolt, with door handles, keys and rebates, six with silvered metal spandrels and escutcheons 19.5 by 11cm.; 7¾ by 4¼in; and six 17.5 by 10cm.; 6¾ by 4in. £1,500-2,000

1358 A BRASS AND STEEL MOUNTED PEAT BELLOWS, 19th Century, on mahogany rectangular base, 76cm.; 2ft 6in long overall. £200-300

1359 A GEORGIAN COPPER COFFEE POT, circa 1800, tapering cylindrical with turned wood side-handle, 23cm.; 9in; and another similar (2). £200-300

1360 AN OVAL COPPER SAUCEPAN, early 19th Century, with iron side handle, 38cm.; 15in diam; and another smaller saucepan (2). £150-200

Collection of Ralph Boocock

22 Sept 92.

Hammer prices in GBP
excluding buyer's premium.

1167	85	1213	340	1256	520
68	150	14	260	1257	500
69	90	15	240	58	200
1170	85	16	—	59	150
71	80	17	—	1260	150
72	1,450	18	250	61	140
73	680	19	270	62	280
74	1,800	20	280	63	260
75	1,550	21	160	64	950
76	1,750	22	280	65	820
77	—	23	150	66	340
78	500	24	600	67	—
79	360	25	180	68	—
1180	600	26	360	69	260
81	750	27	600	1270	360
82	360	28	300	71	—
83	720	29	520	72	130
84	—	1230	170	73	220
85	—	31	—	74	—
86	190	32	520	75	—
87	300	33	260	76	—
88	—	34	—	77	—
89	140			78	420

74 1220
 75 -
 76 -
 77 -
 78 420
 79 -
 1280 100
 81 120
 82 -
 83 -
 84 460
 85 340
 86 170
 88 120
 89 300
 1290 500
 91 -
 92 -
 93 320
 94 85
 95 500
 96 400
 97 320
 98 100
 99 85

Taken over

31 -
 32 520
 33 260
 34 -
 35 -
 36 700
 37 250
 38 220
 39 160
 1240 240
 41 320
 42 280
 43 270
 44 340
 45 210
 46 290
 47 210
 48 160
 49 210
 1250 200
 51 -
 52 250
 53 240
 54 210
 55 170

88 500
 89 140
 1290 220
 91 240
 92 860
 93 700
 94 -
 95 1,280
 96 3,100
 97 170
 98 180
 99 -
 1200 400
 01 320
 02 440
 03 230
 04 200
 05 230
 06 260
 07 -
 08 -
 09 420
 1210 250
 11 210
 12

22 Sept 92.
Collection of Ralph Boocock

Hammer prices in GBP
excluding buyer's premium.

1167	85	1213	340	1256	520
68	150	14	260	1257	500
69	90	15	240	58	200
1170	85	16	—	59	150
71	80	17	—	1260	150
72	1,450	18	250	61	140
73	680	19	270	62	280
74	1,800	1220	280	63	260
75	1,550	21	166	64	950
76	1,750	22	280	65	820
77	—	23	150	66	340
78	500	24	600	67	—
79	360	25	180	68	—
1180	600	26	360	69	260
81	750	27	600	1270	360
82	360	28	300	71	—
83	720	29	520	72	—
84	—	1230	170	73	130
85	—	31	—	74	220
86	190	32	520	75	—
87	300	33	260	76	—
88	—	34	—	77	—
89	140	35	—	78	420
1190	220	36	700	79	—
91	240	37	250	1280	100
92	860	38	220	81	120
93	700	39	160	82	—
94	—	1240	240	83	—
95	1,280	41	320	84	—
96	3,100	42	280	85	460
97	—	43	270	86	340
98	170	44	340	87	170
99	180	45	210	88	120
1200	—	46	290	89	300
01	400	47	210	1290	500
02	320	48	160	91	—
03	440	49	210	92	—
04	230	1250	200	93	320
05	200	51	—	94	85
06	230	52	250	95	500
07	260	53	240	96	400
08	—	54	210	97	320
09	—	55	170	98	100
1210	420			99	85
11	250				
12	210				

Turnover

	1300	—		
	01	—	1332	310
	02	—	33	—
	03	130	34	—
	04	170	35	170
	05	250	36	—
	06	340	37	250
	07	150	38	—
OTHER PROPERTIES	08	520		
	09	150		
	1310	440		
	11	280		
	12	400		
	13	190		
	14	2,200		
	15	110		
	16	150		
	17	—		
	18	130		
	19	460		
	1320	330		
	21	260		
	22	260		
	23	—		
	24	300		
	25	280		
	26	130		
	27	—		
	28	300		
	29	150		
	1330	—		
	31	3,600		