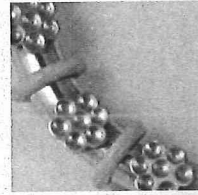
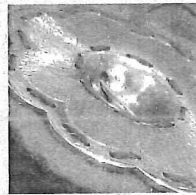


GAG

# PEWTER LIVE

The future and the perfect present



2006 CATALOGUE

- 90 -

Eigendom  
Nederlandse Tinbibliotheek

*M.M.B.M.*

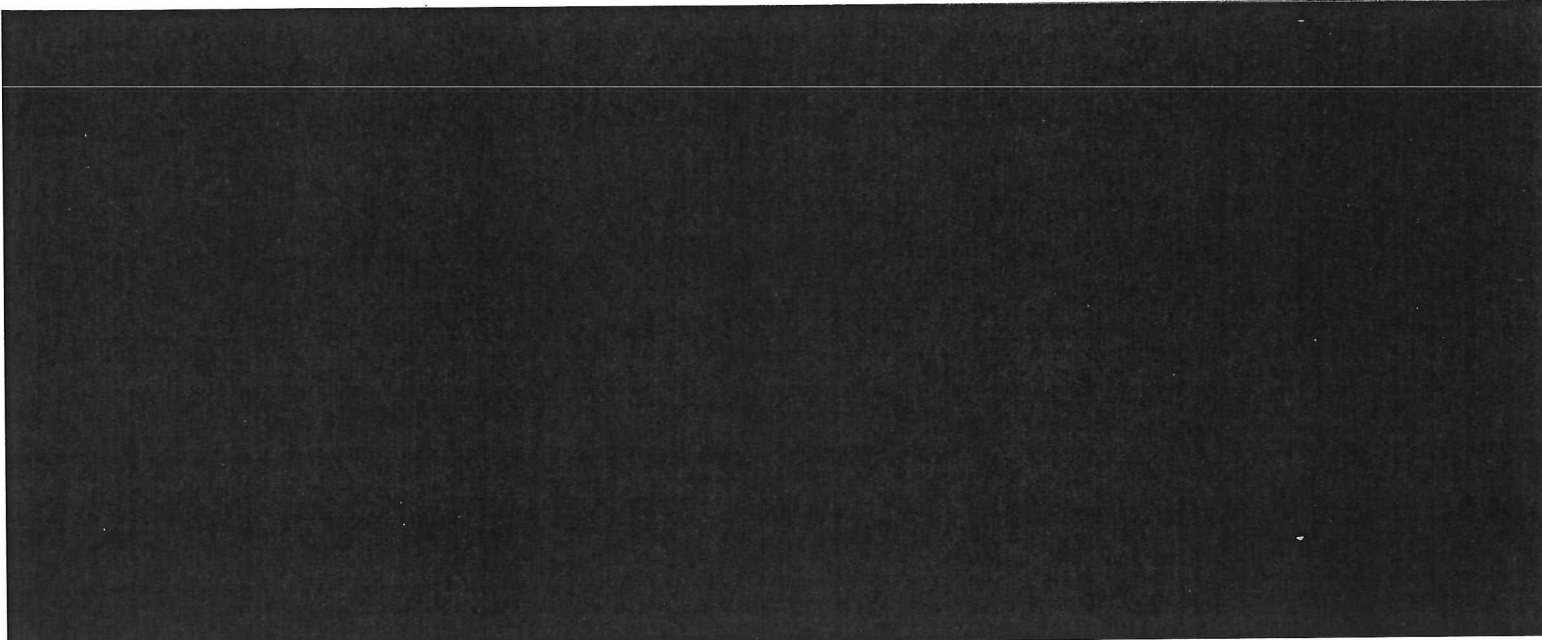
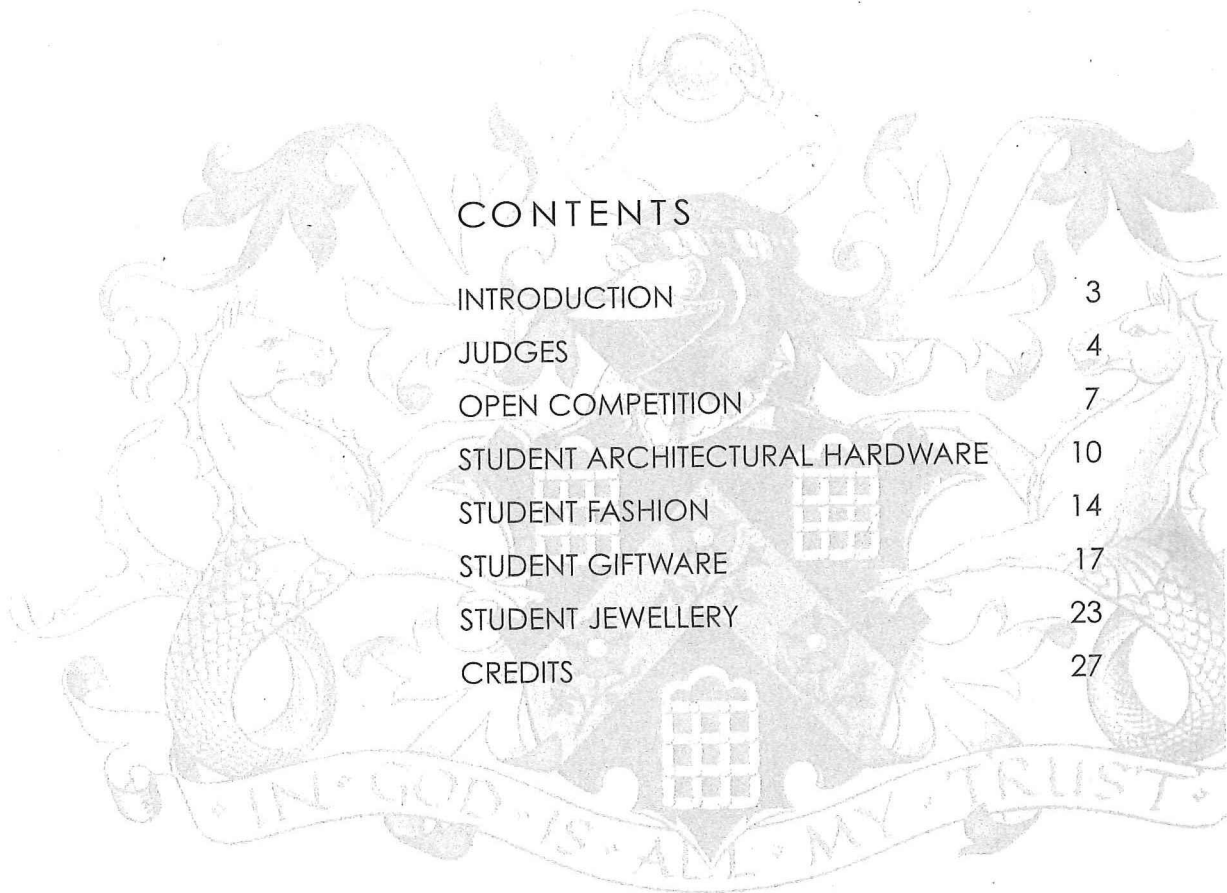
PEWTER

LIVE

2006

CONTENTS

INTRODUCTION	3
JUDGES	4
OPEN COMPETITION	7
STUDENT ARCHITECTURAL HARDWARE	10
STUDENT FASHION	14
STUDENT GIFTWARE	17
STUDENT JEWELLERY	23
CREDITS	27



# CONRAN & PARTNERS

PRODUCT DESIGN ARCHITECTURE INTERIOR DESIGN GRAPHIC DESIGN

## SUPPORTING PEWTER LIVE 2006



DESIGNERS OF:

**COQ d'ARGENT**

NO. 1 POULTRY, LONDON EC2R 8EJ  
T: 020 7395 5000

THE BUTLERS WHARF  
**Chop House**

36E SHAD THAMES, LONDON SE1 2YE  
T: 020 7403 3403

**PATERNOSTER  
CHOP HOUSE**

WARWICK COURT, PATERNOSTER SQUARE,  
LONDON EC2M 7DX  
T: 020 7029 9409

# PEWTER LIVE

The aim of Pewter Live is to revive interest in the use of pewter as the material of choice for domestic and interior products, jewellery and personal accessories and also to raise standards of design in the general category of giftware and corporate gifts. A new fashion category was introduced in 2006 as the judges believe that pewter is an ideal material to complement, and enhance, many contemporary fashion items.



JASPER CONRAN

Presenter of the prizes for Pewter Live 2006, at Pewterers' Hall, 7 June 2006.

In 2006 there are eight designers competing for the Pewter Product of the Year Award and eight colleges taking part with 43 students shortlisted for final judging across four categories: architectural hardware, fashion, giftware and jewellery.

For 2006 the student briefs were set by college tutors with the result that the students really have developed ideas and concepts for pewter which stretch its use into new realms. In fashion there are handbags and gladrags; the architectural hardware includes a bird bath and 'bog standard' signs; decorative and practical gifts including verdigris vessels, salt and pepper cellars and jewellery which stretches the mind as well as the material.

The softness and versatility of pewter lends itself to the design of smooth, almost sensuous products which have a tactile quality far softer and warmer than silver or other precious metals. Modern pewter contains no lead; it is an alloy of tin with other metals such as copper and antimony. The beauty of this is that it requires very little maintenance and 'polished' pewter will retain its shine if simply cleaned with a soft cloth.

Pewter Live is organised by the Worshipful Company of Pewterers with the support of the Association of British Pewter Craftsmen. In centuries past most artisan trades were supported by a Livery Company. The pewter trade is fortunate in having the continuous support of The Worshipful Company of Pewterers since 1348 when 'the goodfolk, makers of vessels of pewter' sought approval from the Mayor and Aldermen of the City of London for the Articles of their Trade.

## THE JUDGES

Pewter Live 2006 was judged by an independent panel chaired by Sebastian Conran. The Worshipful Company of Pewterers is extremely grateful to Sebastian and all the judges for the time they devoted to this competition and the enthusiasm with which they undertook the judging process.



**SEBASTIAN CONRAN**  
Director, Conran & Partners

Sebastian studied design at the Central School of Art and Design, and in 1979 joined Wolff Olins corporate/brand identity consultancy. In 1986 he founded Sebastian Conran Associates, successfully collaborating with leading international businesses on a wide range of projects. In 1999 the studio merged with the Conran Group to form Conran & Partners, where Sebastian is now the director responsible for the product and graphics work.

Sebastian's technical innovations and inventions have been involved in dozens of patents and the studio's work has received many design awards. Sebastian has written books on design, was founding contributor to Blueprint magazine, has taught furniture design at the RCA, lectures frequently and was also a founding trustee of the Design Museum. He is a Freeman of the Worshipful Company of Pewterers.



**JULIA CLARKE**  
Retailer, Hester Clarke Jewellers

Julia is a fourth generation Jeweller, having started as a Saturday girl in the family retail business she worked her way up to becoming Director. Julia is qualified as a Fellow of the Gemmological Association (FGA), and has attained her Retail Jewellers Diploma (R J Dip). To maintain and build on her expertise she attends conferences and seminars. With the family background in London, Wilson & Gill, Regent Street, Julia has maintained high standards which are applied to the business in Aylesbury. She is a Liveryman of the Worshipful Company of Clockmakers, Freeman of the Worshipful Company of Goldsmiths, and maintain a long-standing family connection with its trade association, the National Association of Goldsmiths (NAG).



**CHRIS HUDSON**  
Pewterer, Chimo Holdings

Chris is Team Principal of Chimo Holdings, a leading Sheffield manufacturer of cutlery, corporate gifts and design-led products supplying major UK Companies and overseas markets. Chris is a passionate believer in combining traditional skills with modern technology/thinking and innovative design. He has been involved with various universities in lecturing and supporting student projects that help promote an awareness of the opportunities and challenges facing today's Small and Medium size Enterprises (SMEs).

Chris is a member of the Association of British Pewter Craftsmen and a Freeman of the Worshipful Company of Pewterers.



**SUE BONHAM**  
Fashion Designer

Sue graduated with Distinction at the London College of Fashion in 1981. Her graduation collection being bought by Harrods. In the 1980s she worked with Simon Napier-Bell making clothes for his bands such as Wham! and Japan. She also worked with Terence Donovan styling for some of his photo shoots. Between the mid 80s and mid 90s Sue worked as a freelance fashion designer; taught design and manufacturing at Lucie Clayton Finishing School; lectured part time at the London College of Fashion, and showed at London Fashion Week and Paris Fashion Week under her own label. Since the late 1990s Sue has made a name for herself as a couture designer for both women and menswear showing at her own shows in London's West End. She designs and makes stylish clothes for all occasions, and has an expanding list of high profile clients, including HRH The Countess of Wessex.



**RHODA PARRY**  
Editor, Country Homes and Interiors

Rhoda is the editor of Country Homes & Interiors, an IPC SouthBank magazine. She was appointed editor in May 2004, having previously edited SouthBank's sister home interest title, 25 Beautiful Homes, for two years. Prior to that Rhoda worked on Ideal Homes and Creating Beautiful Homes, and was also the editor of Practical Parenting's Complete Guide to Pregnancy, also published by SouthBank. This year is the 20th anniversary of Country Homes & Interiors. The magazine offers inspirational county homes, decorating, shopping advice and ideas, and frequently showcases new and established British designers, crafts people and their work. The magazine's January 2006 issue featured stunning pewter items by master craftsman Keith Tyssen and Pewter Live 2005 winners Loretta Harmer and Tim Parsons.



**LAILA ZOLLINGER**  
Director, Wildshaw Limited

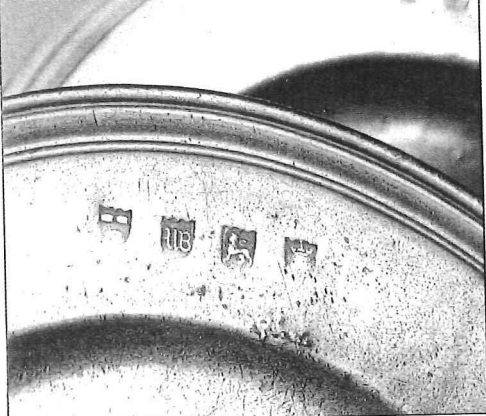
Laila is a Director of Wildshaw Limited, the worldwide sales agent for Minsur SA, Peru (who produce about 40,000 tonnes tin metal annually). Laila has worked in the metal industry all her working life and takes a keen interest in all things tin related, from mine to finished products. Laila is Norwegian by birth and pewter has long been a particular favourite. Due to its versatility and beauty, the Viking's metal of choice can be found in numerous guises in her family home – from cutlery and wine goblet stems to kitchen cabinet furniture. The promotion of pewter is an ongoing challenge, and one of Laila's long-term aims is to promote the development of the pewter industry from its current fragmented state into a component of mainstream culture.

## WHAT IS PEWTER?

Pewter is an alloy of tin with other metals such as copper and antimony. Tin mining has little or no effect on the environment and Pewter is therefore environmentally friendly. As Pewter is not plated there is no danger of surface flaking. It will retain its shine or patina if cleaned properly with a damp cloth.



The marks produced here are used to guarantee products on which they are stamped. The two marks on the top left are owned by the Association of British Craftsmen and are found on articles made by Association members, the middle being used to identify Pewterware of fine quality. The third mark is owned by the European Pewter Union (of which the ABPC is a member) and is stamped by Association members on their pieces under licence from the EPU.



# BUZZACOTT

*We are pleased to support  
Pewter Live 2006 Catalogue*

Buzzacott are established as one of the market leaders in advising livery companies, providing audit, and taxation compliance services. We provide proactive and pragmatic solutions to the varied issues that livery companies are presented with.

**Please contact us to find out how  
we can help you:**

**Buzzacott Chartered Accountants**

12 New Fetter Lane, London EC4A 1AG

T: 020 7556 1200

F: 020 7556 1212

E: [enquiries@buzzacott.co.uk](mailto:enquiries@buzzacott.co.uk)

[www.buzzacott.co.uk](http://www.buzzacott.co.uk)

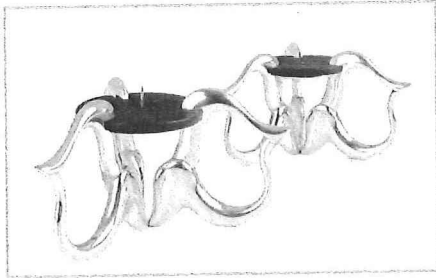
Registered to carry out audit work by the Institute of  
Chartered Accountants in England and Wales.



## OPEN COMPETITION

PEWTER PRODUCT OF THE YEAR 2006

FIRST – £4,000 SECOND – £2,000 THIRD – £1,000



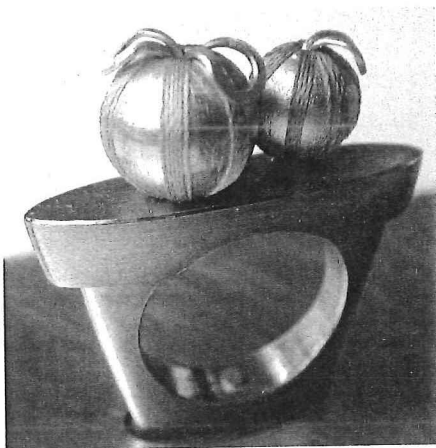
### FLEUR GRENIER

The inspiration for this design came from the graceful movements of a ballet dancer. As one element can be applied to various designs, on its own it elegantly holds a serviette, but when combined into groups it can be made into candlesticks or a wine bottle stand.

[design@fleurgrenier.co.uk](mailto:design@fleurgrenier.co.uk)  
[www.fleurgrenier.co.uk](http://www.fleurgrenier.co.uk)

### ANNIE PAYNE

This pewter necklace is designed for formal and informal wear. Original inspiration came from microscopic images of cellular structures of bone and wood. The pendant was cast in pewter from a silver master, reticulated and fused to create layers. The beauty of pewter is in its amazing casting properties. Silver wire finishes the piece.  
[annie\\_p\\_78@hotmail.com](mailto:annie_p_78@hotmail.com)

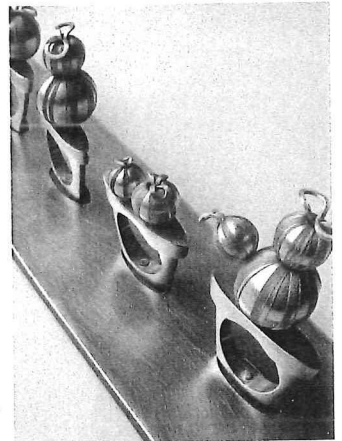


### NUTRE ARAYAVANISH

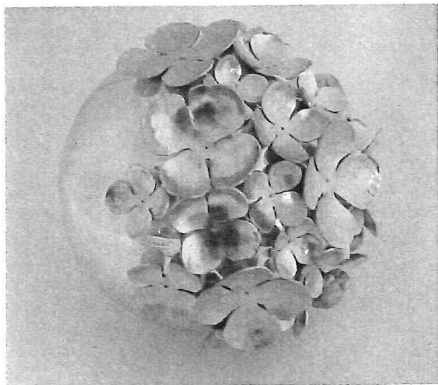
#### Secret Garden Rings and Table Decoration

I believe that we all have a secret space somewhere where we can really relax, and that we think of it in difficult times. This idea is transferred to my secret garden rings and table decoration; users can decorate their personal space with this table decoration and bring one or more of these rings with them everywhere.

[nutre.arayavanish@rca.ac.uk](mailto:nutre.arayavanish@rca.ac.uk)



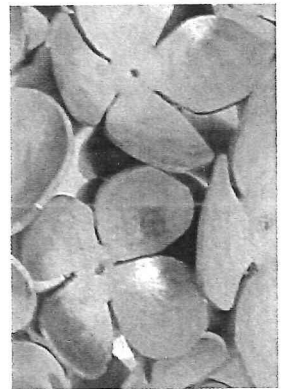
## OPEN COMPETITION



### LORETTA HARMER

This table-top sculpture is inspired by my love of nature, in particular the cluster of flowers on a hydrangea. I want the piece to be delicate, tactile and pleasing to look at. The main body is a pewter sphere with the flowers cut from sheet pewter. If mass produced a choice of colours could be applied for added visual appeal.

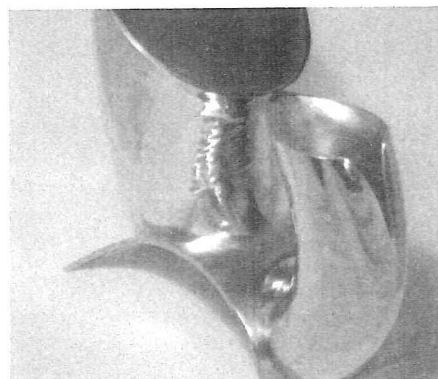
[loretts@ntlworld.com](mailto:loretts@ntlworld.com)



### SADIE RICE

These pieces are designed for growing herbs and to bring some of the outdoors inside. The main piece is pewter with coloured felt inlay and is strung into place with matching coloured wire. The containers are stylish, contemporary and add a bit of fun to the kitchen.

[ricenspicey@hotmail.com](mailto:ricenspicey@hotmail.com)



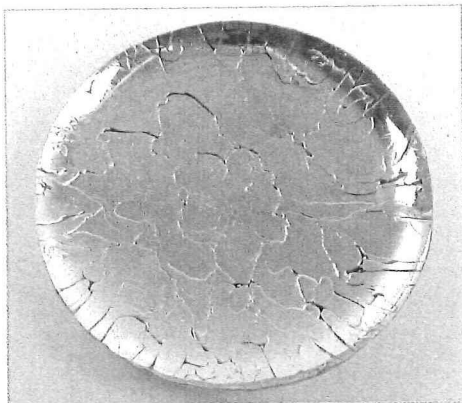
### BEAULAGH CHAPMAN-BROOKS

The water jug is produced through innovative anti-clastic raising techniques, allowing graceful curves in all directions. Water droplet shapes are echoed throughout the piece and heightened by the rippled exterior surface, which emulates the vessel's intended contents. The design may also be cast or pressed in sections for production purposes.

[bscdesignco@aol.com](mailto:bscdesignco@aol.com)



## OPEN COMPETITION



### TIM PARSONS Drip-Cast Bowl

The decorative flow patterns on the surface of the Drip-Cast bowl are made by drips of molten pewter fusing together. This intriguing random surface pattern is framed by a crisp rim. The pattern on each bowl will be different, achieving a rare 'manufactured uniqueness'. The bowls will retail for under £100.

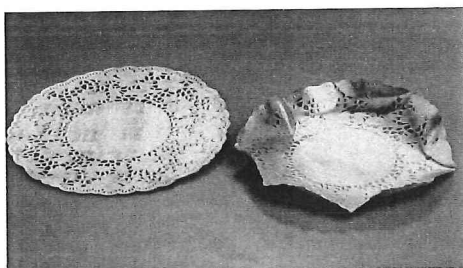
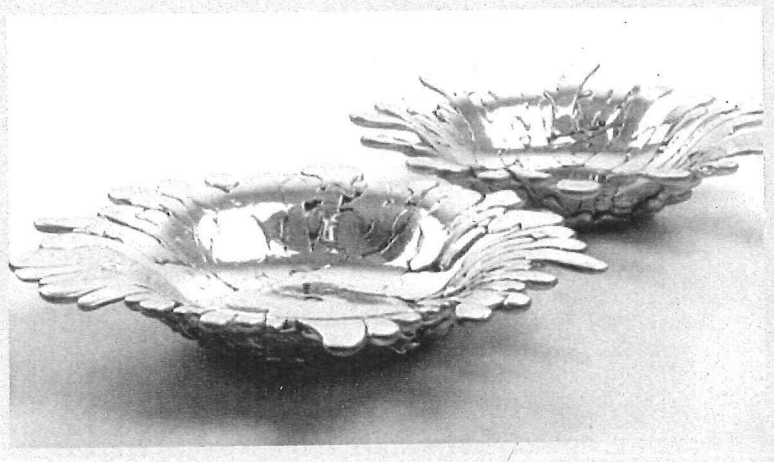
[t.parsons@mmu.ac.uk](mailto:t.parsons@mmu.ac.uk)  
[www.timparsons.info](http://www.timparsons.info)



### TIM PARSONS Splash Bowl

The form of the Splash bowl reflects its manufacturing process of using pewter in its molten state. Dripping pewter over a convex steel tool and allowing it to flow and solidify creates the unusual form and surface. Each piece is quick to make, repeatable, and yet unique, and can be retailed for under £100.

[t.parsons@mmu.ac.uk](mailto:t.parsons@mmu.ac.uk)  
[www.timparsons.info](http://www.timparsons.info)



### SIAN MATTHEWS

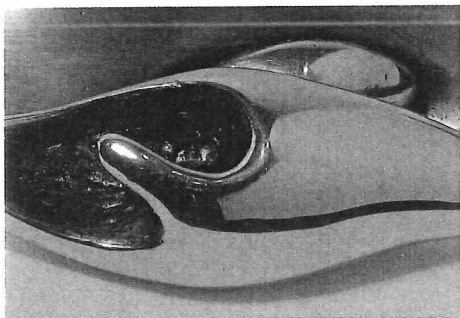
The pewter Doily is a functional decorative container; it explores the value of a disposable object and the versatility of a precious material. Made exclusively of pewter the Doily exploits the pliable qualities of the metal. Sold flat, the Doily can be bent into the owner's desired form — perhaps into an elegant container for cakes, or dramatically folded over a shelf.

[sianmatthews@hotmail.co.uk](mailto:sianmatthews@hotmail.co.uk)

## STUDENT ARCHITECTURAL HARDWARE

THE PRIZES FOR THE STUDENT ARCHITECTURAL HARDWARE CATEGORY  
ARE SPONSORED BY CONRAN AND PARTNERS

FIRST – £500 SECOND – £350 THIRD – £150



**THERESA NGUYEN**  
University of Central England  
**Stratus**

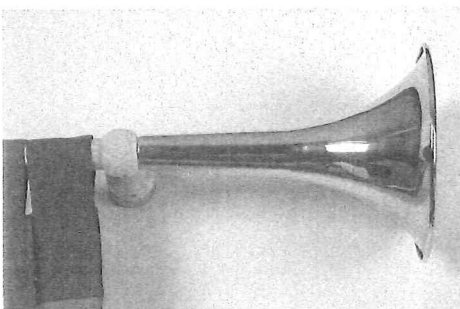
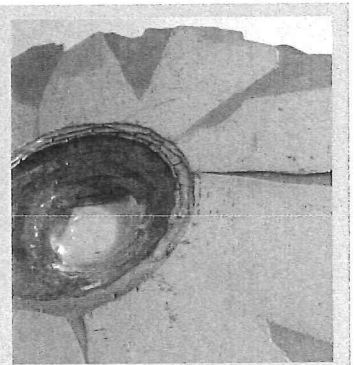
Stratus depicts a surreal skyline that landscapes the interior walls of restaurants and public buildings. The strengthened pewter hangers, which can be used in different ways, are soldered directly onto the brass wall panels. The texture inside the hanger is cold enamelled to echo the bronze in the wall panel.

[theresa-nguye88@hotmail.com](mailto:theresa-nguye88@hotmail.com)

**JENNY GRACIE**  
South Devon College  
**Bird bath**

My work is inspired by nature's textures and patterns together with an interest in designs that blend with an outdoor environment. The etched pewter surrounds a cast glass bowl that nestles in its own slate nest. I feel the piece can function at different scales – large scale as a garden feature such as the bird bath; medium scale as a decorative table centre piece and small scale as a pot for a dressing table or trinkets.

[jasgracie@aol.com](mailto:jasgracie@aol.com)

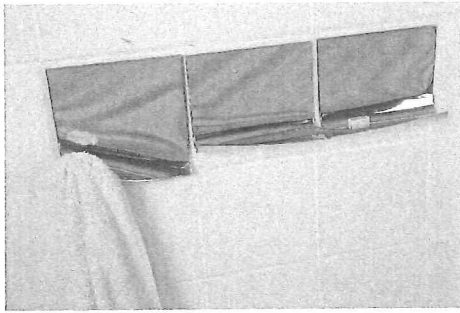


**DARREN McCONNELL**  
Buckinghamshire Chilterns University College  
**Curtain finial**

My curtain finial is designed for large rooms with high ceilings, such as hotel lounges and lobbies. Certain shapes found in plants and insects outside the window inspired the design. The highly polished finish reflects light entering the room, whilst matt finish ridges inside the funnel resemble the texture of some beetles.

[dazmcconnell@hotmail.co.uk](mailto:dazmcconnell@hotmail.co.uk)

## STUDENT ARCHITECTURAL HARDWARE



**ELLA McINTOSH**

**Buckinghamshire Chilterns University College**

**Pewter bathroom tiles**

My pewter bathroom tiles are 3-dimensional, multi-functional items that look as though they are peeling from the wall. They fix onto existing tiles with super-strength Velcro fastenings and can be used as towel hooks or shelves for toothbrushes and razors. The clean, mirrored finish is ideal for any bathroom.

[ellamcintosh@hotmail.com](mailto:ellamcintosh@hotmail.com)

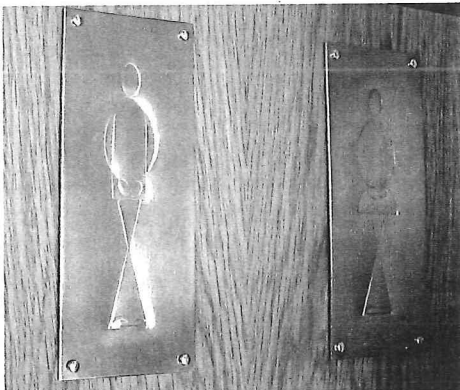
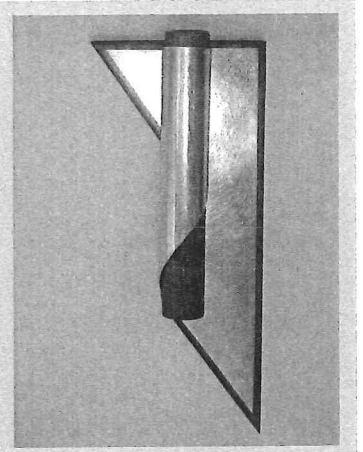
**TIM PHILLIPS**

**University College for the Creative Arts at Rochester**

**Pewter door handle and push-plate in pewter and English walnut**

Drawing inspiration from the discarded newspapers of commuters found on public transport and recycling them back to the boardroom. Beautiful and functional pieces that make the most of the malleability and aesthetic of modern pewter.

[timmo3p@hotmail.com](mailto:timmo3p@hotmail.com)



**THOMAS McDOWELL**

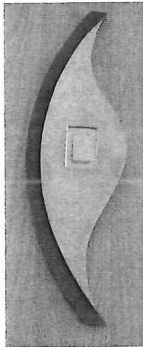
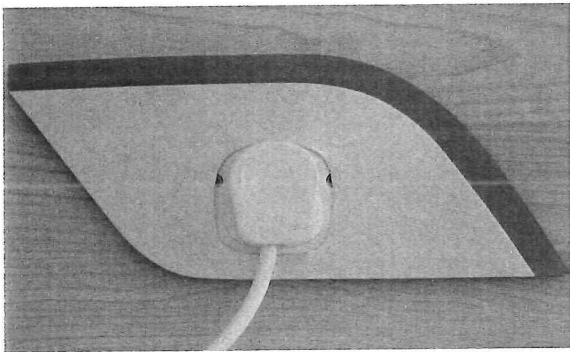
**Buckinghamshire Chilterns University College**

**Bog standard signs**

I decided to bring humour to often mundane toilet signs. My idea for the male and female figures came from exaggerating the act of desperately needing the loo! I hope that people will become more aware of their aesthetic value as well as their function, bringing life to a dull surrounding.

[wagatdubdidi@hotmail.com](mailto:wagatdubdidi@hotmail.com)

## STUDENT ARCHITECTURAL HARDWARE



**HANNAH BROOKS**

University College for the Creative Arts  
Rochester

### Switch housings

Mixing old and new, the ancient tradition of pewter with contemporary plastics, these housings are inspired by the stylised shapes found in eastern fabrics for use in the home for individuality, style and function.

[Littleone\\_squeak@hotmail.com](mailto:Littleone_squeak@hotmail.com)

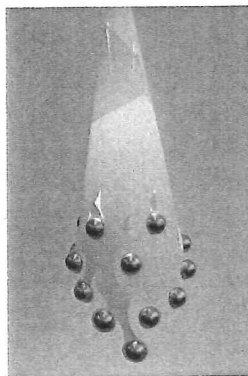
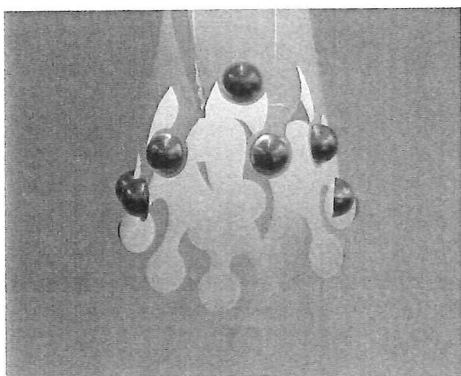
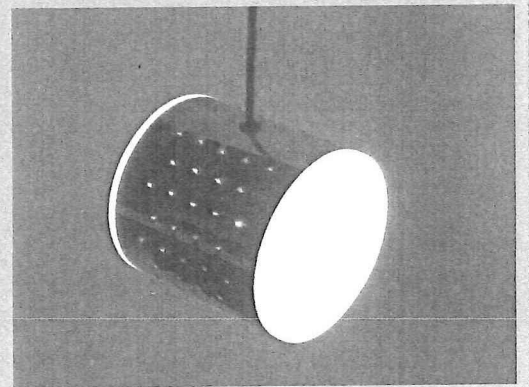
**CHARLOTTE TOLLYFIELD**

### Mood light

Buckingham Chilterns University College

The inspiration for this mood light came from my practical research into punching and cutting into flat surfaces to create pattern with light. The pewter casing has been punched with small holes to create patterns of light with a soft, warm glow creating a pleasant mood suitable for the living, dining and bedroom areas. The light can be placed on a table top, the floor or hung from a hook in the wall.

[charlotte-tollyfield@yahoo.co.uk](mailto:charlotte-tollyfield@yahoo.co.uk)



**STEPHANIE ALLEN**

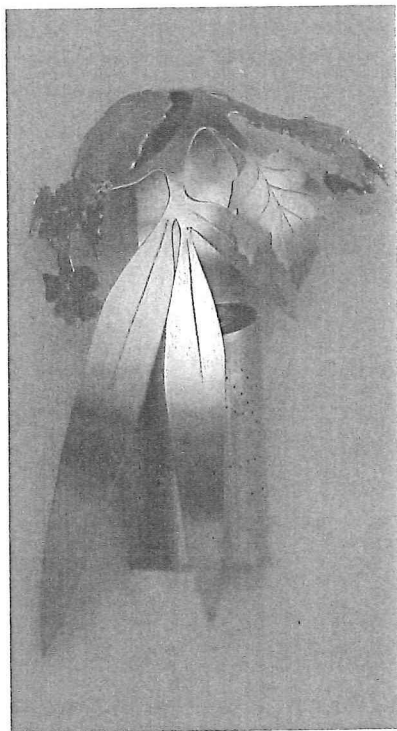
University College for the Creative Arts  
at Rochester

### Interior decorative light

Pewter has traditionally been fashioned into vessels and trinkets, but with a modern approach it is possible to create a stylish and bold interior design statement suitable from the trendiest of hotels and bars to the comfort of the home environment.

[bubblewrap\\_24@hotmail.com](mailto:bubblewrap_24@hotmail.com)

## STUDENT ARCHITECTURAL HARDWARE



**MARIANE HARDING**  
University College for the  
Creative Arts at Farnham  
Plant light

I was struck by the plain starkness of conventional outdoor lighting and decided to create a light that is a piece of sculpture as well as a useful object. The subtle and organic character of my plant light design was inspired by mixing a variety of familiar plants to form the canopy.  
[k.r.harding@ntlworld.com](mailto:k.r.harding@ntlworld.com)

**POLLY HORWICH**  
University College for the  
Creative Arts at Farnham  
Door handle

'Outside the box' is a door handle for commercial or institutional buildings. The design is based on corrugated cardboard, expressing the concept that the building is the external package of the corporate entity within. The cover plate may be customised with corporate imagery or text and applied to the basic handle.  
[Phorwich@aol.com](mailto:Phorwich@aol.com)

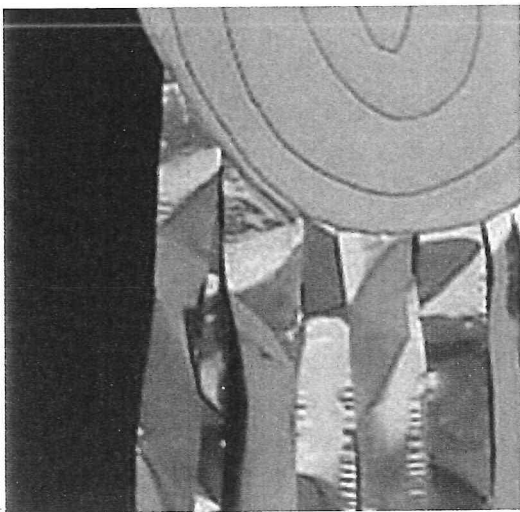


**MIRIAM HANID**  
University College for the  
Creative Arts at Farnham  
Door handle

My aim for this door handle was to use the lustrous qualities of pewter in a subtle way. I wanted to echo the raw aspects of a painter's studio and bring it into the public eye. The act of squeezing paint out of a tube is thus transferred into a public experience.  
[mizhanid@yahoo.co.uk](mailto:mizhanid@yahoo.co.uk)

## STUDENT FASHION

THE PRIZES FOR THE STUDENT FASHION CATEGORY  
ARE SPONSORED BY THE WORSHIPFUL COMPANY OF HABERDASHERS  
FIRST – £500 SECOND – £350 THIRD – £150



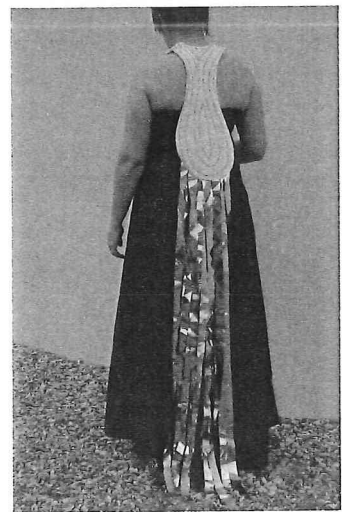
### POPPY PORTER

University College for the  
Creative Arts at Farnham

#### Red carpet ribbons

Red carpet ribbons is a dramatic special occasion garment inspired by the glamour of a film premiere. It is designed to flow behind the wearer, and uses pewter to emulate ribbons. These are polished to a reflective sheen and attached to the quilted fabric part of the design.

[poppy.porter@btinternet.com](mailto:poppy.porter@btinternet.com)



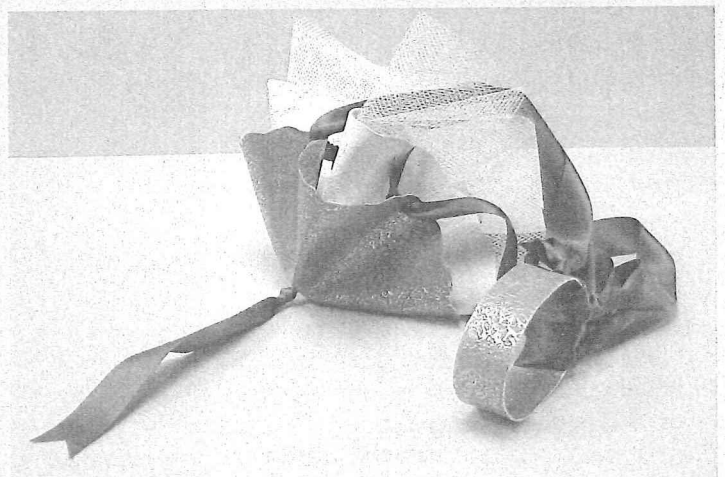
### POPPY PORTER

University College for the Creative  
Arts at Farnham

#### Miss Muffet goes to town

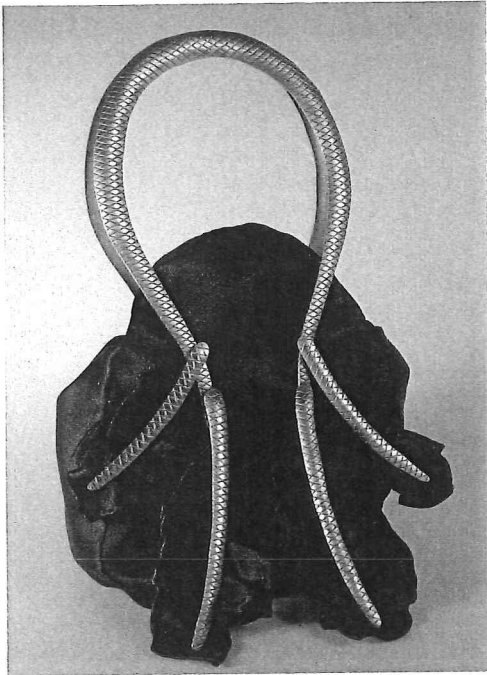
My 'handbag to be worn from the wrist' was inspired by the fashion of the 1950s. It is kitsch and lacy, for the fairy tale country girl to take out on the town! The pewter bag is lined with leather and tulle and attached to the bracelet with simple knots of ribbon.

[poppy.porter@btinternet.com](mailto:poppy.porter@btinternet.com)





## STUDENT FASHION

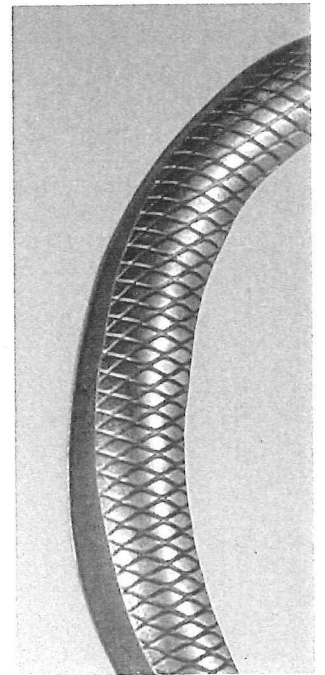


**RUTH GOLDING**

**University of Central England**  
**Satin feathers**

'Satin feathers' is a small, elegant evening bag with pewter handles and feathers, inspired by crushing, pleating and crinkling fabric to create texture. Ideas for the form and shape originate from the structure of a feather. The elegant look and feel of satin makes it popular for evening wear and handbag designs.

[meg@golding83.freeserve.co.uk](mailto:meg@golding83.freeserve.co.uk)



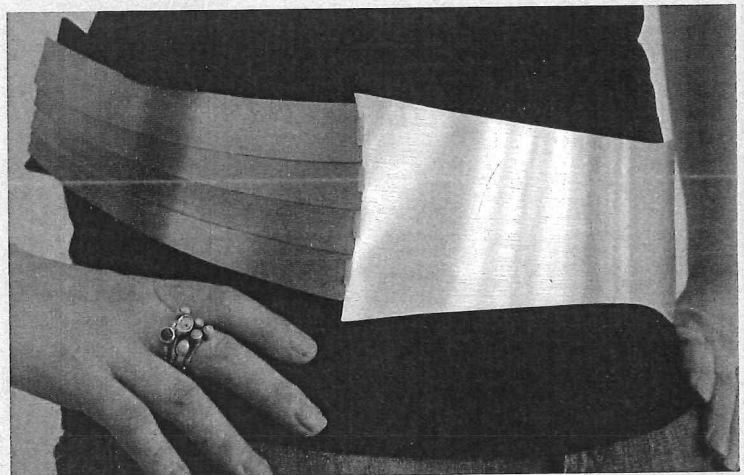
**SARAH SEELEY**

**University College for the Creative Arts at Rochester**

**Belt**

I looked at armour from the past and wanted to bring it to the future. Fashion is the armour of today and with that in mind this belt, complemented with coloured titanium, echoes pewter's historic past.

[sgseeley@hotmail.com](mailto:sgseeley@hotmail.com)



## STUDENT FASHION



**JOSEPHINE SAMUEL**  
South Devon College  
Handbag

The most important accessory for any woman is her handbag but sometimes she wants to be a little frivolous rather than totally practical. My handbag is obviously for a fun occasion, a night out. The design is classical in the blend of black satin and silver but also whimsical and flamboyant with its white ostrich feathers.

[jolovesben@hotmail.com](mailto:jolovesben@hotmail.com)

**JADE MEEHAN**

University College for the Creative Arts at Rochester  
Shoe charms

These pewter shoe charms are influenced by Art Deco architecture, using small geometric shapes. They can be worn on everyday lace-up shoes, or tied with ribbon around a leg to captivate an evening audience. Although simple in design and function, the shoe charms allow the wearer to express their individuality through a traditional material but a modern aesthetic.

[jademeehan@msn.com](mailto:jademeehan@msn.com)



**JOANNA REED**  
University of Central England  
Handbag

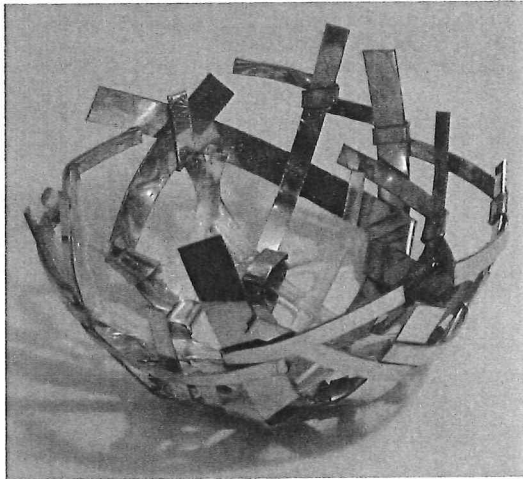
This handbag with pewter button is designed to complete a delicate, feminine look, embellishing a simple outfit with its eye-catching detail and intricacy. Ribbons and shimmering fabric frame the pewter button, which was inspired by the lace itself. Tiny holes drilled into the pattern reflect the decorative qualities of lace.

[missjoreed@hotmail.co.uk](mailto:missjoreed@hotmail.co.uk)

## STUDENT GIFTWARE

THE PRIZES FOR THE STUDENT GIFTWARE CATEGORY  
ARE SPONSORED BY SPEECHLY BIRCHAM

FIRST – £500 SECOND – £350 THIRD – £150

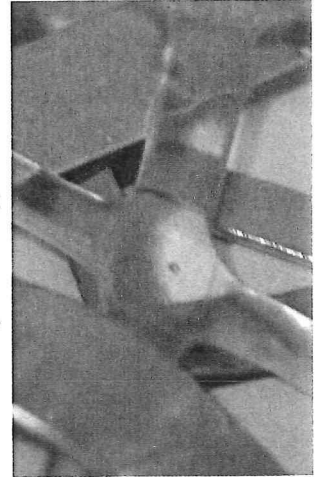


**SARAH HOARE**  
Manchester Metropolitan  
University

### Bowls

The designs I chose are simple yet effective. I took my inspiration from fireworks and related it to the celebration brief. One design is made purely from pewter strips that are entwined together in a random form. The other is made in the same way but linked with glass.

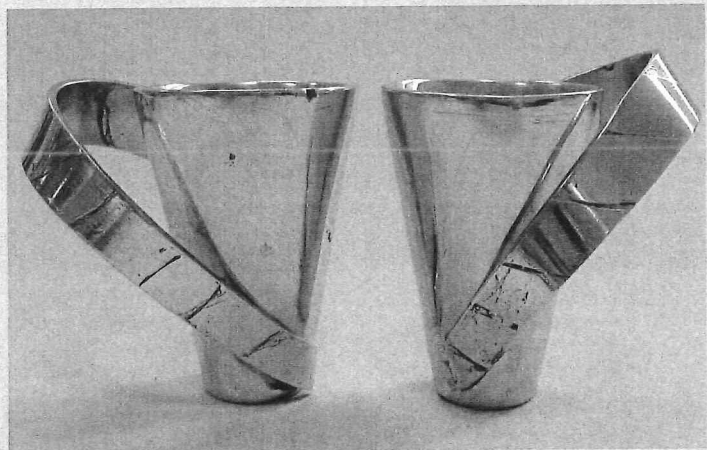
[sarah\\_be\\_bad@hotmail.co.uk](mailto:sarah_be_bad@hotmail.co.uk)



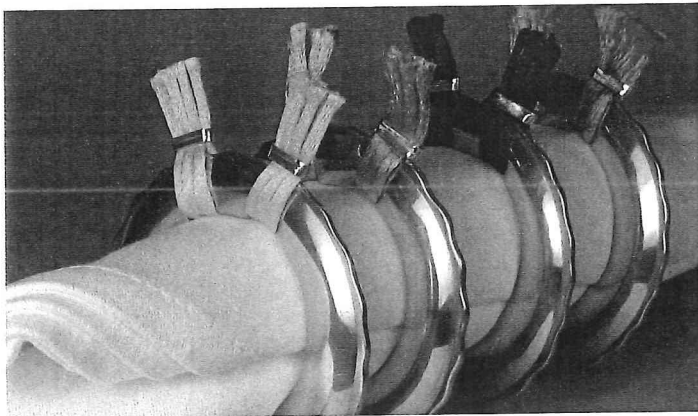
**SHANE TUBBY**  
South Devon College  
Love cups

The design is influenced by a combination of early and contemporary pewterware – a pair of cast and polished 'love cups' each with slightly textured handles that form an abstract heart shape when placed together. A gift for weddings, anniversaries, Valentine's Day or any celebration of unity.

[j-magic-moore@hotmail.co.uk](mailto:j-magic-moore@hotmail.co.uk)



## STUDENT GIFTWARE



**CLAIRE BEVAN**

University of Central England

**Napkin rings**

Inspiration for this set of four napkin rings was initially drawn from inflatables. By extracting certain elements of this subject I have designed contemporary, yet elegant and playful, napkin rings that are also hardwearing. The distinct textile component adds another element of excitement, enhanced by the variations in colour.

[clairebevan57@hotmail.com](mailto:clairebevan57@hotmail.com)

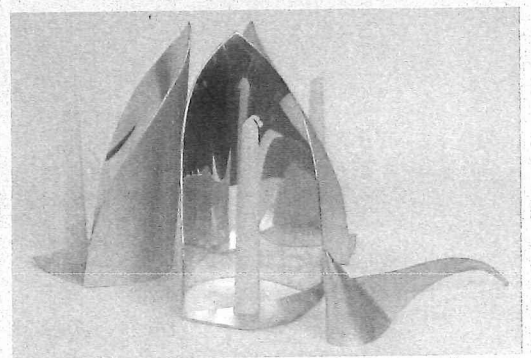
**ANN WOODS**

Truro College

**Candle holders and snuffer**

My product — three candle holders and snuffer — is designed to bring elegance and atmosphere into the home, or to add ambience in a small restaurant. It is based around the image of three sail-like triangles seen suspended in a company window: 'I saw three ships a-sailing'.

[Annj-woods@yahoo.co.uk](mailto:Annj-woods@yahoo.co.uk)



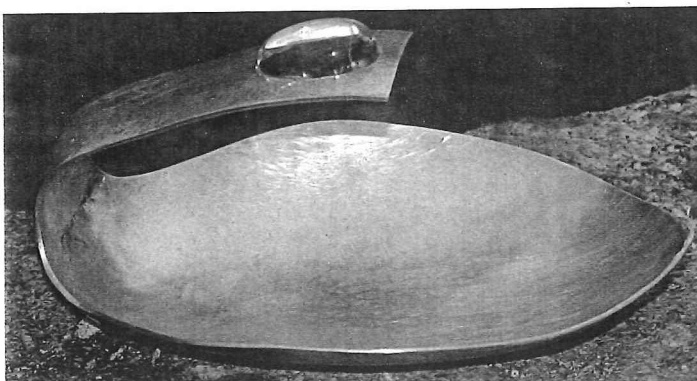
**DENISE FROST**

Truro College

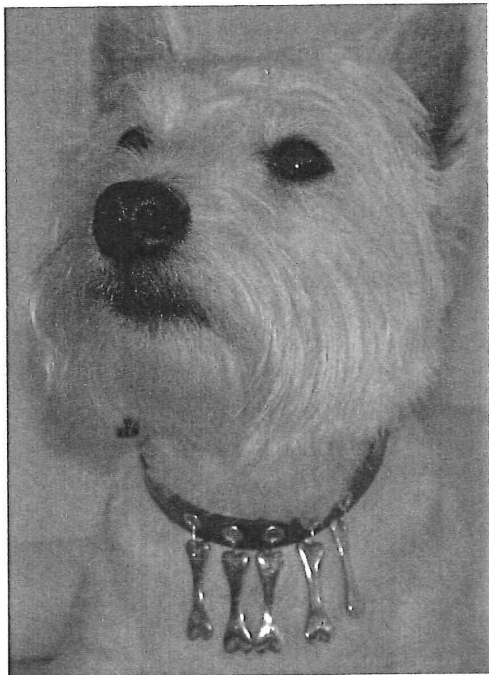
**The Viewing plate**

The viewing plate is designed as a graduation present. Quotes or messages chosen by the giver are inscribed on the plate and then viewed through the rock crystal lens, which magnifies the words. My aim was to remind educated minds that looking for the obvious often leads to the answer.

[colonelherbert@aol.com](mailto:colonelherbert@aol.com)



## STUDENT GIFTWARE



**SARAH HINSCLIFF**

University College for the  
Creative Arts at Rochester

### Dog charms

My chosen designs are intended for the ever increasing market of canine accessories. These individual and stylish charms move away from the high street and into the boutique. Using pewter in a modern way, with a variety of finishes, enables both the dog and owner a chance to step out in matching style.

[sara.hinscliff@talk21.com](mailto:sara.hinscliff@talk21.com)

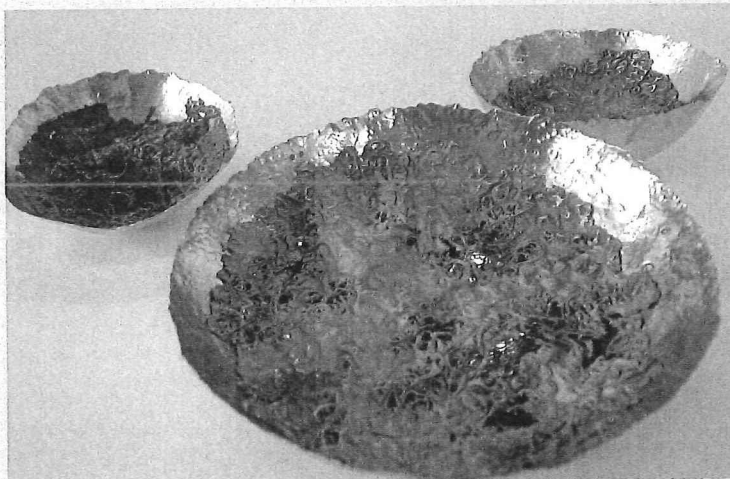


**GRUG JONES**

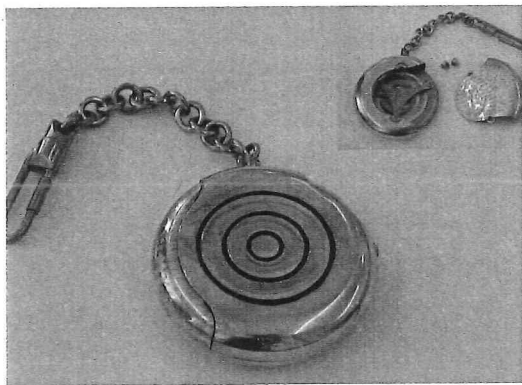
Hereford College of Art and Design  
Vessels

My decorative domed vessels — combining pewter, copper and verdigris — are inspired by living in the country and near the sea. What especially fascinates me is the surface patterning and texture that occurs in things as varied as accretions on water, worn stones, and the miniature galls on the backs of leaves.

[grug\\_jones@hotmail.co.uk](mailto:grug_jones@hotmail.co.uk)



## STUDENT GIFTWARE



**FRED WYVER**

**University College for the Creative Arts at Rochester**  
**Pocket watch**

The current dandyish revival in the men's fashion world brings into question the currency of men's accessories. The pocket-watch, a time honoured symbol of affluence, would be an ideal object for the fashionable young man today. Remodelled in the gunmetal gray of pewter, with brass fittings and a classic British 'target' motif it would be a stylish addition to any wardrobe.

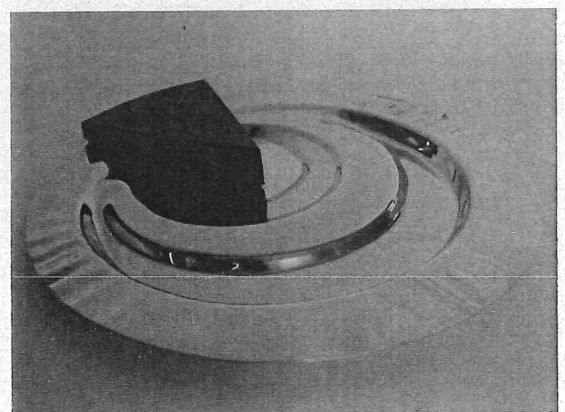
[ollelta8582@hotmail.com](mailto:ollelta8582@hotmail.com)

**SARA BRINKHURST**

**University College for the Creative Arts at Rochester**  
**Serving platter**

A modern take on a pewter serving platter, suitable for wedding or tenth (tin) anniversary gift. As seafood is often used for canapés, this is reflected with a 'sea' theme of sand ripples around stone or driftwood, with sea-foam and sea-glass decoration. Different levels can display the selection, or simply allow the eye to flow around the plate as water flows over the beach or rock pools.

[sara.brinkhurst@virgin.net](mailto:sara.brinkhurst@virgin.net)



**MATTHEW MARSTON**

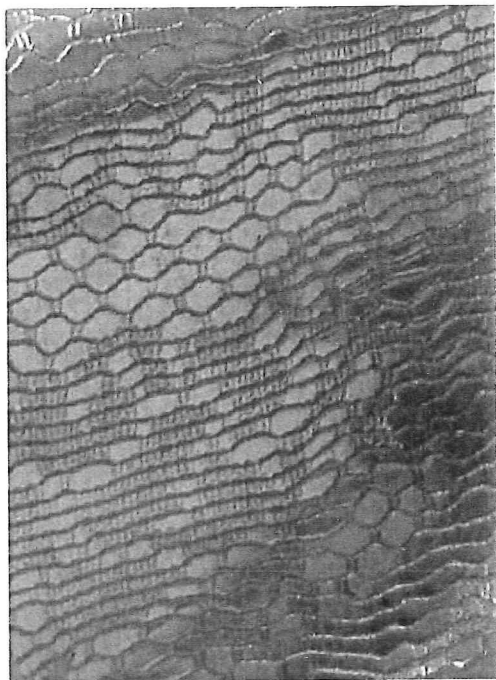
**Truro College**  
**Gravy boat**

I was in a restaurant that had a display of old metal fuel cans and oil dispensers. My design for a gravy boat was inspired by these characteristic shapes. The conical shaped body (albeit upside down) uses the pouring spout as a handle with an 'oil' blob at the end.

[matthew.marston@tiscali.co.uk](mailto:matthew.marston@tiscali.co.uk)



## STUDENT GIFTWARE



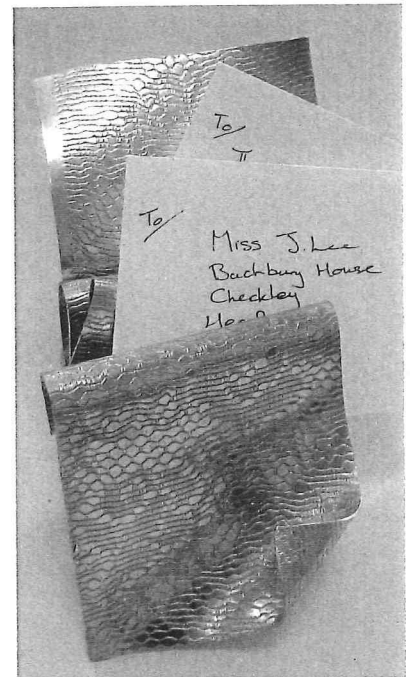
**JENNY LEE**

**South Devon College**

**Letter rack**

Desk furniture is often quite masculine in design and I wanted to produce something feminine as well as functional. The pewter is embossed with lace to mimic the drapery of fabric and sits on the edge of a shelf or desk, allowing stationary, such as letters, notes and business cards, to slot within its folds.

[luv-you55@hotmail.com](mailto:luv-you55@hotmail.com)



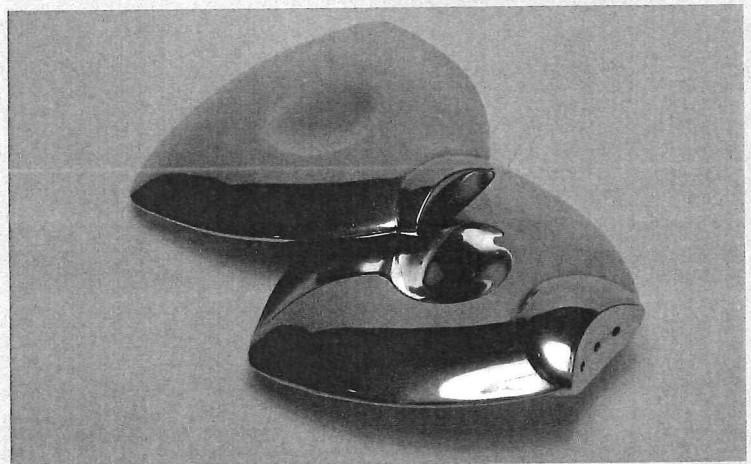
**NOBUKO OKUMURA**

**University of Central England**

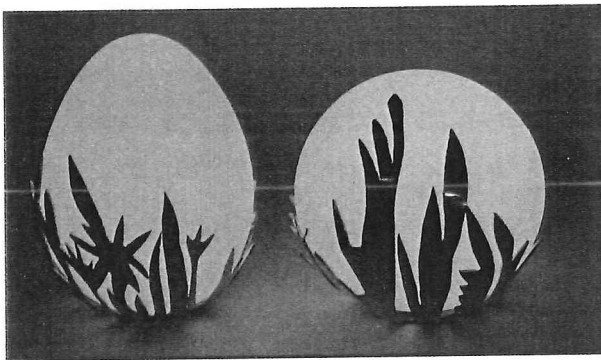
**Salt and pepper**

I wanted to create ergonomic pieces that can be touched and used, rather than just objects of beauty. The shape of my salt and pepper cellars was inspired by tailors' chalk, which fits into the hand perfectly. They are ideal as a wedding gift or business incentive, as well as for daily use.

[nino2875@hotmail.com](mailto:nino2875@hotmail.com)



## STUDENT GIFTWARE



**LAURA SAVAWAN**

University of Central England

**Light**

I wanted to create a decorative outdoor light that combines pewter with modern materials for urban living. The battery operation and floral embossed stencil form enable the light to be camouflaged well amongst garden foliage, or to be placed proud beside a pond to cast its own reflections.

[louzieabee85@hotmail.com](mailto:louzieabee85@hotmail.com)

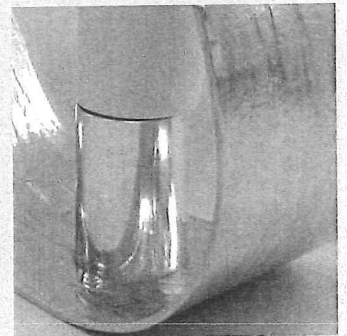
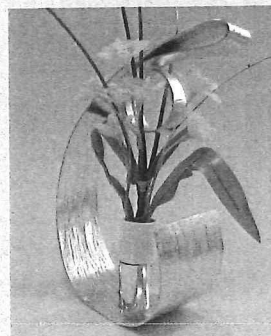
**PAULINE TALBOT**

South Devon College

**The big six oh**

I wanted to make a celebration piece for a sixtieth anniversary or birthday. The embossed pewter is formed to represent the numbers six and zero, with the central decoration falling in front of the zero. It works equally well with flowers or a candle.

[paulinestalbot@yahoo.co.uk](mailto:paulinestalbot@yahoo.co.uk)



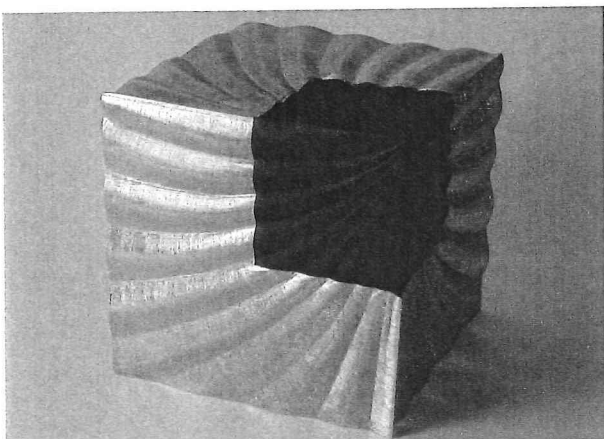
**JONATHAN OLLIFFE**

University of Central England

**Money box**

My pewter moneybox also includes a contrasting black lacquered wooden block to emphasise the beauty of the pewter. The structure is influenced by modern architecture, whilst the wave pattern is based on the tension of a stretched canopy and shows different reflections as the light falls onto the surface.

[jonolliffe@hotmail.co.uk](mailto:jonolliffe@hotmail.co.uk)





## STUDENT JEWELLERY

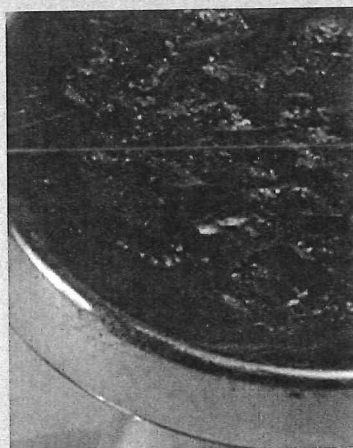
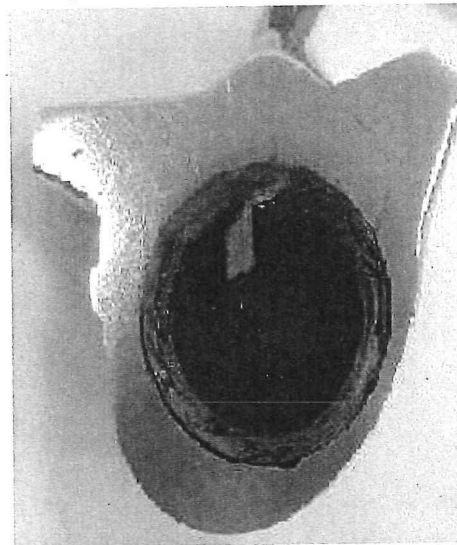
THE PRIZES FOR THE STUDENT JEWELLERY CATEGORY:  
ARE SPONSORED BY THE NATIONAL ASSOCIATION OF GOLDSMITHS  
FIRST – £500 SECOND – £350 THIRD – £150



**JAMES ISON**  
South Devon College  
Next to my heart

A contemporary take on the idea of the keepsake in the form of a heart locket. The heart is a representation of one's own heart with a window on the reverse that contains a personal memento, in this case a lock of hair that is worn against the breast, reminiscent of the Victorian locket. The design is non gendered. A perfect Valentine gift.

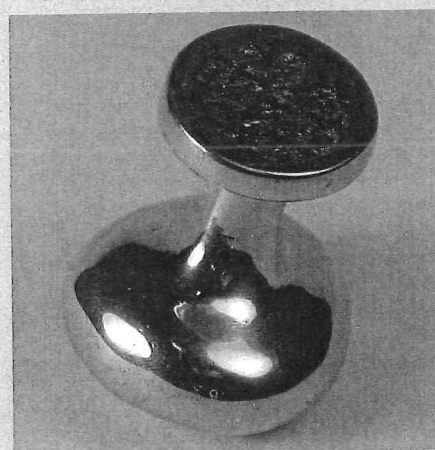
[doomfairy@hotmail.co.uk](mailto:doomfairy@hotmail.co.uk)



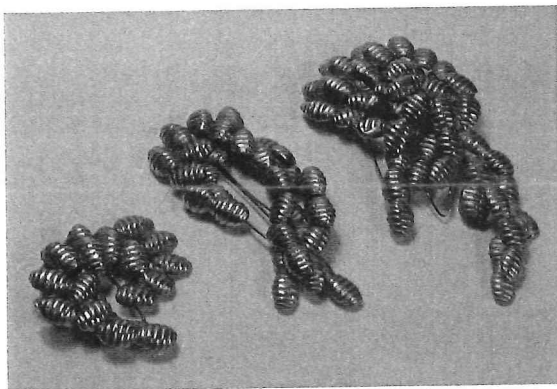
**MIKYLLA LAW**  
University of Central England  
Hand piece

I wanted to design a personal and unique piece of jewellery that could be worn in times of stress or frustration. The ring fits between middle and index fingers. The top has a decorative pattern, whilst the tactile pebble sits hidden in the palm of your hand and demands to be held!

[mikylla@hotmail.com](mailto:mikylla@hotmail.com)



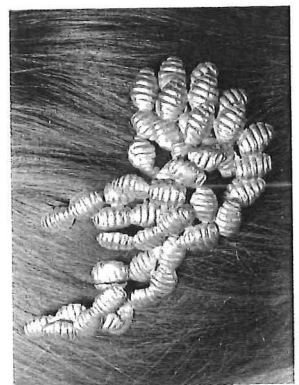
## STUDENT JEWELLERY



**GEORGINA KETTLE**

**University of Central England  
Hairclips**

I created my set of three hairclips as costume jewellery for young women. They are designed to keep the fringe swept back, and can be worn either during the day or in the evening as a statement piece.  
[georgekettle@hotmail.com](mailto:georgekettle@hotmail.com)

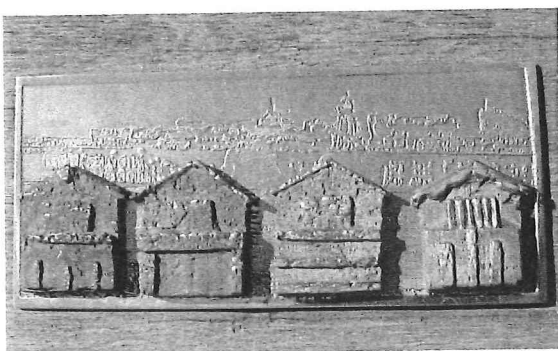
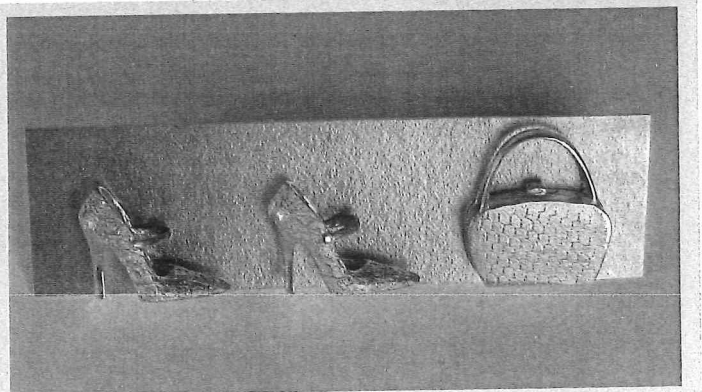


**STEPHANIE OVERTON**

**University of Central England  
Icon brooch**

I have designed a range of brooches after initial research into the traditional charm bracelet. Brooches with different combinations of iconic images can be collected over a number of years to suit individual people at particular times in their lives. The qualities of pewter are ideal for fun costume jewellery.

[louzieabee85@hotmail.com](mailto:louzieabee85@hotmail.com)



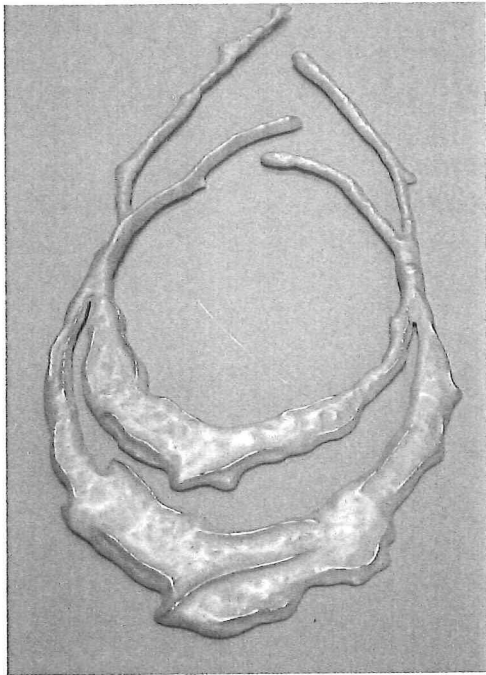
**MIA JONES**

**University College for the Creative Arts at Farnham  
Beach huts brooches**

My most precious memories are of the seaside as a child, and this inspired my beach hut's brooches. Each brooch has a photographic seaside scene rolled onto the pewter. The magnetic huts, which are patinated to give them individuality and a worn, wooden effect, can be added singularly or in groups.

[sparklebunny@hotmail.com](mailto:sparklebunny@hotmail.com)

## STUDENT JEWELLERY

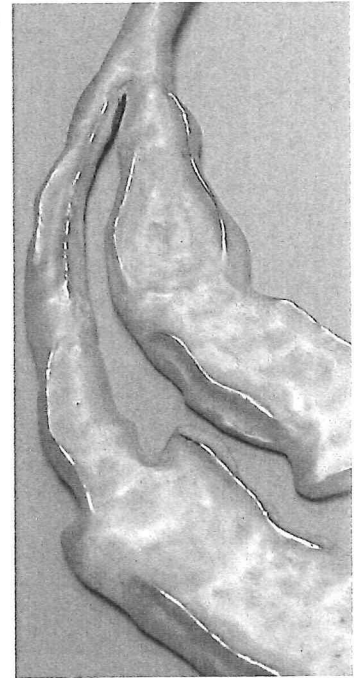


**AMY HUBBARD**

**University College for the  
Creative Arts at Farnham**

**Neckpiece**

My 'ripple sculptural' neckpiece is inspired by the movement of water. It can be worn as an elaborate necklace or simply admired as a striking sculpture. It is not designed for everyday wear, but rather to make a bold statement at a glamorous evening event or on the catwalk.  
[missamyx.jewellery@yahoo.co.uk](mailto:missamyx.jewellery@yahoo.co.uk)



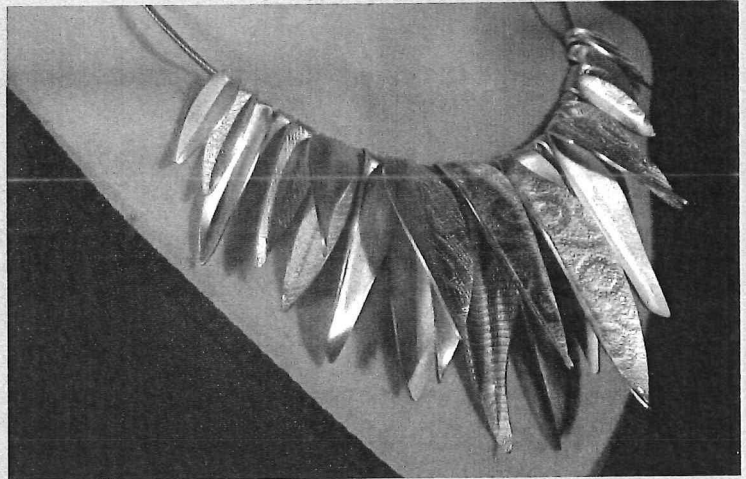
**MELISSA TURNBULL**

**Truro College**

**Neckpiece**

The symbol of the 'tree of life' — representing an holistic vision of life — was inspiration for my neckpiece. The delicate, textured leaves move with the wearer, tinkling gently or clinking softly. I hope that the piece, as a metaphor, will serve as a reminder to the wearer of the preciousness of life.

[melissaturnbull@hotmail.com](mailto:melissaturnbull@hotmail.com)



## STUDENT JEWELLERY



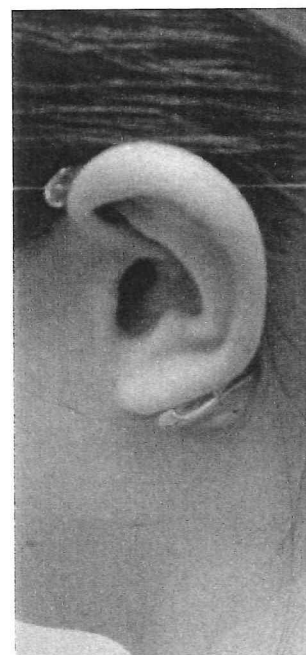
**BERENICE CLARK**

University College for the Creative Arts at Farnham

**Earpiece**

I was inspired by Rachel Whiteread to make a negative casting of a hidden, delicate and sensual area of the body to create a piece which seems more precious without drawing attention away from the pewter. I therefore decided on a cast of 'behind the ear' as glimpse of the item could be seen but it would still be hidden.

[berrymumblebee@gmail.com](mailto:berrymumblebee@gmail.com)



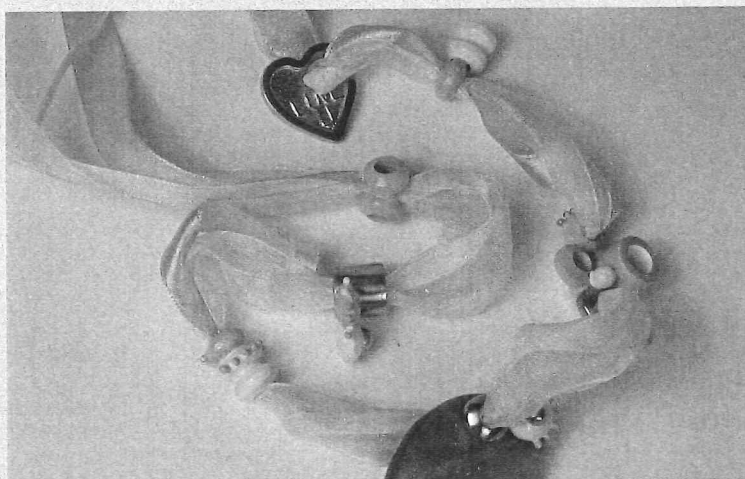
**TESSA COLE**

University of Central England

**Candy necklace pic 'n' mix**

The last sweet, a bag of candy — and the reluctance to share. In designing this candy necklace, with its chocolate box ribbons, I explored something I find precious and captured it within pewter as a wearable object. This inedible string of candy both excites and frustrates me!

[candyskulls@hotmail.com](mailto:candyskulls@hotmail.com)



# PEWTER LIVE SPONSORS

The Worshipful Company of Pewterers would like to thank TIN TECHNOLOGY and WILDSHAW LIMITED for the corporate sponsorship of Pewter Live 2006.

Our thanks go also to the main sponsors:

CONRAN & PARTNERS

NATIONAL ASSOCIATION OF GOLDSMITHS

SPEECHLY BIRCHAM

THE WORSHIPFUL COMPANY OF HABERDASHERS

and to those Companies and Organisations that provide additional prizes and support:

City and Guilds

Giftware Association

Goldsmiths' Company

Hopeman Associates

Alex and Patricia Neish

Pewter for the competition kindly provided by Turret Pewter Products, agents for Alpha Fry. [gfarrell@turret-brazing.com](mailto:gfarrell@turret-brazing.com)

Pewter for the lathe and casting demonstrations kindly donated by Laminati Preziosi Srl. [info@tinality.com](mailto:info@tinality.com)

Wine for the City Evening and the Prizegiving kindly donated by Cadman Fine Wines. Support from the trade is key to the success of Pewter Live and our thanks go to Association of British Pewter Craftsmen Members, Alchemy Pewter, Edwin Blyde & Co Ltd, AR Wentworth (Sheffield) Ltd, A E Williams, DJH Engineering and St Justin, for arranging visits for students to gain a greater understanding of the various manufacturing processes.

## CF DAY LTD

of 705 High Road  
North Finchley  
London N12 0BT  
Property Management Experts

Wish the Worshipful  
Company of Pewterers' every  
success at

**Pewter Live 2006**

Pewter Live could not be run without the participation of the colleges and universities from around the U.K. Once again our thanks go to the tutors and second-year students for their tremendous support and enthusiasm:

**Buckinghamshire Chilterns  
University College  
Faculty of Design**  
Queen Alexandra Road  
High Wycombe  
Bucks  
HP11 2JZ  
Tutor: Chris Green  
cgreen01@bcuc.ac.uk  
Company judges: Paul Wildash  
and John Donaldson

**Hereford College of Art &  
Design**  
Folly Lane  
Hereford  
HR1 1LT  
Tutor: Clive Hickinbottom  
c.hickinbottom@hereford-art-  
col.ac.uk  
Company judge: Peter Hamblin

**Manchester Metropolitan  
University  
Faculty of Art & Design**  
Ormond Building  
Lower Ormond Street  
Manchester  
M15 6BX  
Tutor: Tim Parsons  
artdes.fac@mmu.ac.uk  
Company judge: Richard Abdy

**South Devon College  
Arts Academy**  
Vantage Point  
Long Road  
Paignton  
Devon TQ4 7EJ  
Tutor: Trish Woods  
thwoods@blueyonder.co.uk  
Company judge:  
Richard Wildash

**Truro College**  
College Road  
Truro  
Cornwall TR1 3XX  
Tutor: Martin Page  
martinp@truro.ac.uk  
Company judge:  
Richard Wildash

**University of Central England**  
Birmingham Institute of Art  
and Design  
Victoria Street  
Birmingham B1 3PA  
Tutor: Terry Hunt  
terry.hunt@uce.ac.uk  
Company judge:  
David Moulson

**University College for the  
Creative Arts at Farnham**  
Falkner Road  
Farnham  
Surrey GU9 7DS  
Tutor: Susie Fortune  
sfortune@ucreative.ac.uk  
Company judge: Sarah Targett

**University College for the  
Creative Arts at Rochester**  
Fort Pitt  
Rochester  
Kent ME1 1DZ  
Tutor: Brian Hill  
bhill@ucreative.ac.uk  
Company judges: Michael  
Gibbs and Lyn Williams



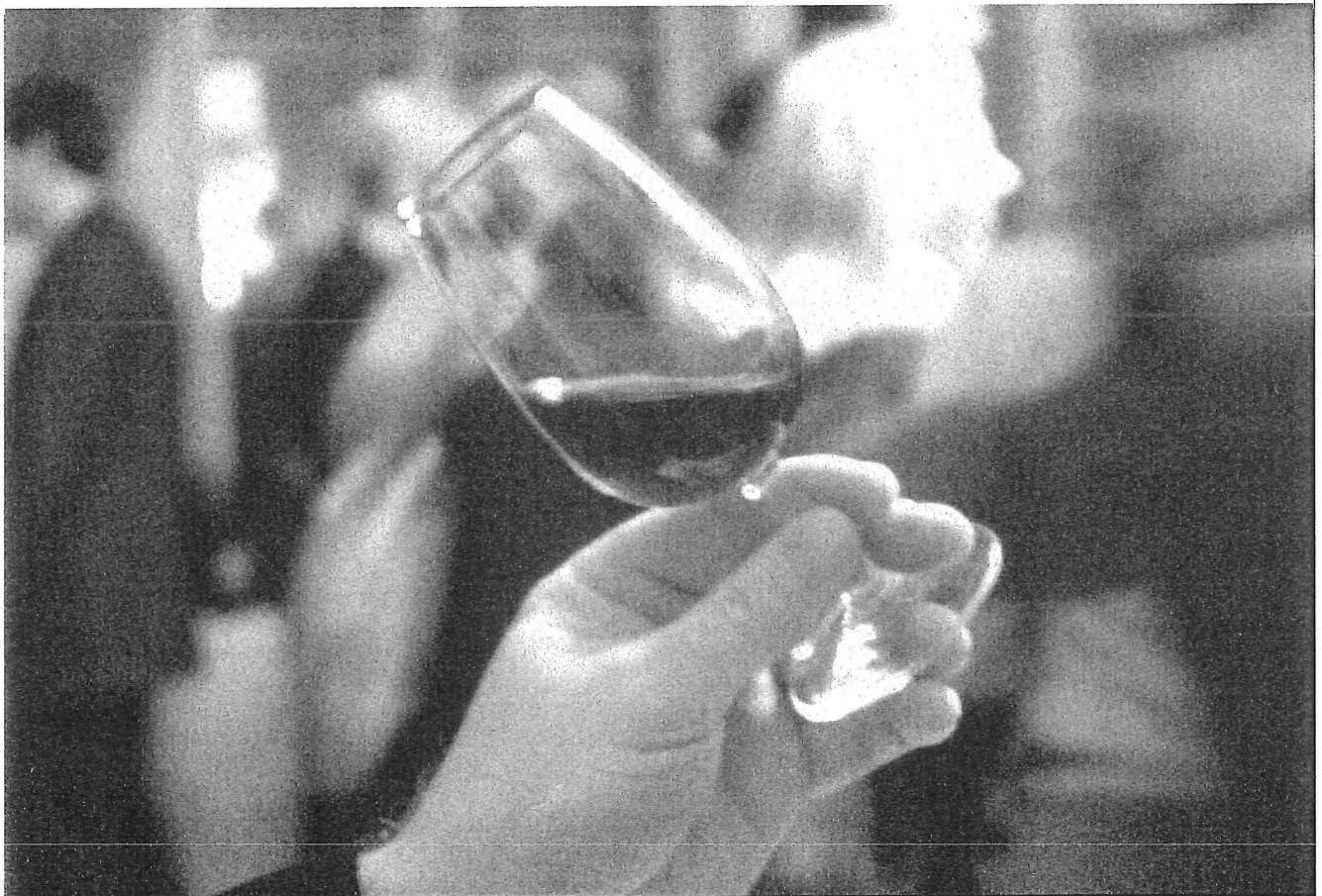
TIN TECHNOLOGY  
FOR A CLEANER FUTURE

# Global Innovation in Tin

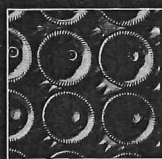


Unit 3, Curo Park, Frogmore, St. Albans, Herts, AL2 2DD  
Tel: +44 (0)1727 87-55-44  
Fax: +44 (0)1727 871-341  
[www.tintechnology.com](http://www.tintechnology.com)  
[www.itri.co.uk](http://www.itri.co.uk)

A membership based organisation committed  
to an innovative and sustainable tin industry.  
For more information please contact: [info@tintechnology.com](mailto:info@tintechnology.com)



Passionate about fine wine.



CADMAN  
FINE WINES

[www.cadmanfinewines.co.uk](http://www.cadmanfinewines.co.uk)

To order:

Telephone 0845 121 4011 Fax 0845 121 4014  
[www.cadmanfinewines.co.uk](http://www.cadmanfinewines.co.uk) email: [sales@cadmanfinewines.co.uk](mailto:sales@cadmanfinewines.co.uk)



# Special Introductory Offer

The Plates have been made by Edwin Blyde & Co of Sheffield from the original plates, dated 1661, and owned by the Pewterers' Company. They are individually boxed and contain a History of the Plates as well as a numbered, signed and dated certificate from the Master of the Worshipful Company of Pewterers.

Pewter Marriage Plates were popular in the 17th century when it was the delightful custom for the bride and groom to commemorate their Wedding Day by exchanging specially engraved Pewter Plates.

The groom's gift to his wife has the engraving around the rim 'WHEN THIS YOU SEE REMEMBER MEE' and depicts a horse, a faithful friend, holding oak leaves and acorns in his mouth, signifying long life and fecundity, and with his tail tied in a love knot. The bride's gift to her husband has the engraving around the rim 'IN GOD IS ALL MY TRUST' and shows a swan, depicting grace, purity and fidelity until death. Further love knots or flowers are engraved on each plate.

The special introductory price of £125 for the pair of plates; or £65 for a single plate (plus £6.50 p&p in each case) is open to readers of Pewter Review.

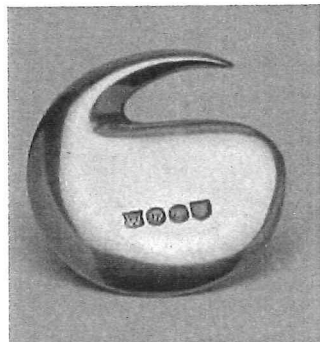
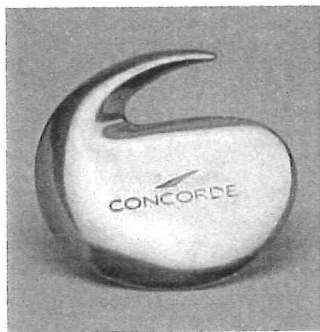
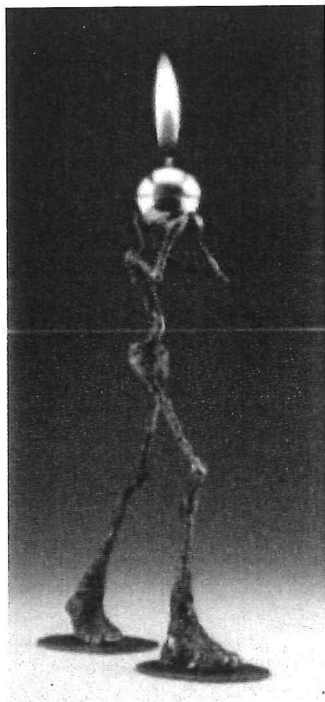
Plates can be purchased by sending a cheque for £131.50 for a pair of plates or £71.50 for a single plate made payable to British Pewter Designs and sent to:

The Clerk, The Worshipful Company of Pewterers,  
Pewterers' Hall, Oat Lane, London EC2V 7DE

Information on credit card payment from  
clerk@pewterers.org.uk  
telephone 0207 3978190

[www.pewterers.org.uk](http://www.pewterers.org.uk)

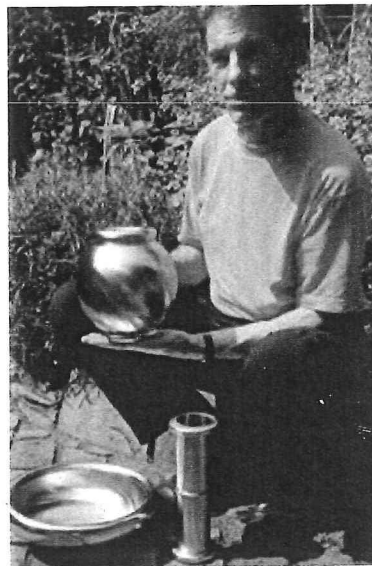
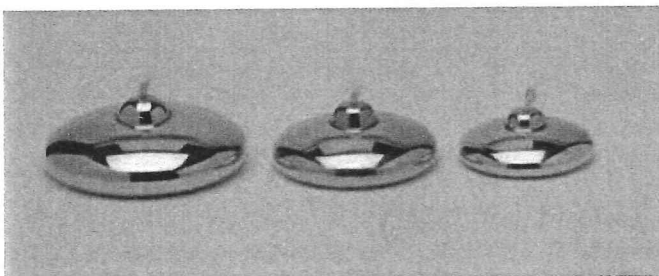
The Worshipful Company of Pewterers is pleased to offer for sale a limited edition of these specially commissioned replica Marriage Plates.



## shop@pewterlive

A new venture for Pewter Live 2006 is shop@pewterlive which will sell a range of selected products manufactured by members of the Association of British Pewter Craftsmen and past winners of Pewter Live. There will be a comprehensive selection of products including previous Pewter Live designs as well as traditional tankards and quaiches, jewellery, mirrors, boxes, tableware, accessories and even a pocket ashtray. Prices range from £2.00 to several hundred pounds and the choice of merchandise is such that there really is pewter for the whole family. At the time of going to press orders for the shop have been placed with AE Williams, Edwin Blyde, DJH, Wentworths, Alchemy, Glover & Smith, Bonnie Mackintosh, Pageant Pewter and Fleur Grenier. The Marriage Plates and other items from the Pewterers' Company will also be on sale.

See left for a selection of products which will be on sale.



In addition to shop@pewterlive, leading repoussé pewter company, Partners in Pewter, and internationally acclaimed pewter craftsman, Keith Tyssen, will have special displays of their popular designs.

Public opening times are 2.00 – 7.00 on Wednesday 7 June and 10.00 – 7.00 on Thursday 8 June 2006.

£5.00

THE WORSHIPFUL COMPANY OF PEWTERERS, PEWTERERS' HALL, OAT LANE, LONDON EC2V 7DE