

G AA





36

36

An early 19th century pewter laver, Scottish, circa 1810-30  
The spouted tapering drum with typical broad central fillet, the flat-lid with locating flange and urn-shaped knob, twin-lobed thumbpiece, the single-curved handle with cylindrical strut and diamond-shaped attachment, touchmark inside base of James Wylie, Glasgow, (working 1786-1840), (PS10386, OP5323), 26cm high  
£300 - 400

37

A pair of Queen Anne pewter single-reeded narrow rim plates, Devon, circa 1700  
Each with hallmarks to rim and touchmark to rear of John Webber II, Barnstaple, (w.1694-1735), (OP 5017, PS 86), together with the ownership triad TSM, diameter 8¾in, (2)  
£600 - 800

Provenance: Sold *Sotheby's*, Hall House, near Barnstable, Devon, 11 November, 1996. (A further pair from the same service sold *Christie's*, The Little Collection, May 2007, lot 130). Ex Michael Boorer Collection, sold *Bonhams*, 22 November, 2012.

38

An early 18th century pewter triple-reeded dish, circa 1700-20  
With hallmarks to the front rim and faint touchmark to rear, possibly of John Barlow, London, (working 1698-1744), (OP 256, PS 447), 16 5/8in diameter  
£250 - 350



37

39

A Late 17th century pewter triple-reeded plate, Oxfordshire, circa 1690  
Hallmarks to the rim and faint touchmark to rear of John Cave I, Banbury, (working 1674-1703), (PS 1591, OP 857), ownership triad RMA also to rim, 13½in diameter  
£200 - 300

40

An oak tester bed  
Incorporating 17th/18th century timbers  
The multiple panelled tester with plain and lozenge run-moulded panels, the headboard with two plain panels over a Queen Anne period rail attributed to the lake District with typical S-scroll carving centred by a single flower-head and the date 1703, an arrangement of nine panels below, the simple turned end-posts joined by a twin panelled footboard, 134cm wide x 213cm deep x 191cm high, (52 1/2in wide x 83 1/2in deep x 75in high)  
£800 - 1,200

41

A Charles II oak coffer, South Lancashire, circa 1680  
Having a twin panelled lid, the front with a pair of panels each carved with a stylized mythical beast, each with hooked nose, doe-eyes, elongated ear and simple coiled body, the mouth issuing stylized carved leaves, a similar pair of beasts carved to the top-rail with the end of each body forming meandering flora, plain spandrels, raised on extended stile supports, 113cm wide x 53.5cm deep x 72.5cm high, (44in wide x 21in deep x 28 1/2in high)  
£800 - 1,200





32



35

29

A late 17th century triple-reeded pewter charger, Oxfordshire, circa 1690

Hallmarks to the rim of John Cave I, Banbury, (working 1674-1703), (PS 1591, OP 857), together with the ownership triad *IHM*, 18in diameter  
£200 - 300

30

A late George III pewter spouted spire flagon

Having a slender tapering drum with reeded-fillet and reeded flared base, knopped domed-lid and open chair-back thumbpiece, the double-curved handle with fish-tail terminal, 37cm high  
£200 - 300

31

A pewter dome-lidded flagon

The cylindrical tapering drum with a high band of twin incised-lines on a spreading foot, knopped domed-lid, ram's-horn thumbpiece, double-curved handle with shield terminal, touchmark inside base, 26.5cm high  
£200 - 300

Provenance: Ex Cyril Minchin Collection. Inscribed *286 MINCHIN TM3330A* to the underside of the base; suggesting that the touchmark may refer to the maker Munden & Grove, (PS6626, OP330a), (working 1760-1773).

32

An early 19th century pewter bulbous measure of gallon capacity and a half-gallon example

Each with verification marks to collar, repairs, (2)  
£200 - 300

33

An early 19th century pewter ale jug, circa 1825

The bulbous body with single mid-fillet, large spout and curved-handle with *boot-heel-type* terminal, together with six George III pewter beakers, each with ownership triad *LJA* engraved to the plain body, below a pronounced collar, a crowned X mark inside each base and an engraved number to the underside, (7)  
£250 - 350

34

A 19th century pewter dome-lidded tankard, circa 1830

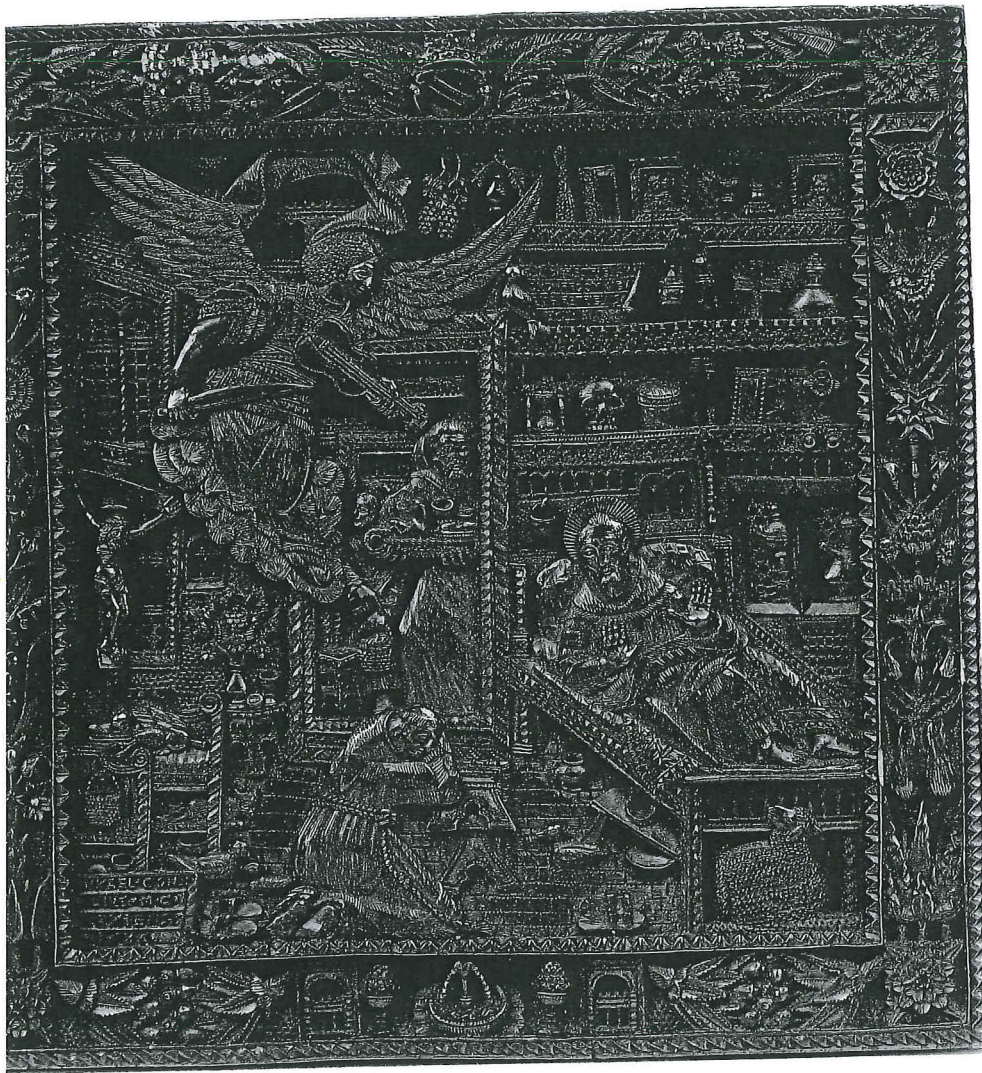
Having a single-fillet to the U-shaped body and engraved monogram *HCD*, an engraved boar crest to the dome-lid, open chair-back thumbpiece and double-curve handle with fish-tail terminal, hallmarks to rim of Susannah Cocks (working 1820-1847), (PS 1779), capacity 38 fl.oz., 20.5cm high  
£100 - 150

35

A Charles II pewter broad-rim dish, Oxfordshire, circa 1674

Hallmarks to rim and touchmark to rear of Anthony Matthews, Oxford, (working 1674-1706), (PS 6273), the rim also dated 1674 below the hallmarks and opposed by a set of four shield enclosed initials, 16¾in diameter, 3¼in rim, (38.5%)  
£400 - 600





ery carved boxwood plaque, *The Death of*  
*St. Francis*, dated 1680, by Mikael Condopidius of

market  
 a to his raised hands, reclining on a bed, a sheep  
 kneeling before an overturned boarded stool  
 rvariant with a tray of food and a servant boy in a  
 an angel playing a viol above, the room lined  
 various objects, to include religious paintings, a  
 an hour glass, a skull, a pair of scissors, and a  
 the prayer 'QUID RETRIBUAM DNO PRO OMNIEV  
 sic), signed to the lower left corner 'MIKAEL  
 . / NAXIENSIS / 1680', all within a finely carved  
 edge centred by a crowned armorial cartouche,  
 deep x 16cm high, (6in wide x 0 1/2in deep x 6in

ed plaque by Mikael Condopidius of Taxos, dated  
 ie mosque of Sultan Suleyman in Constantinople,  
 ril 2011, Lot 398 [£18,750].

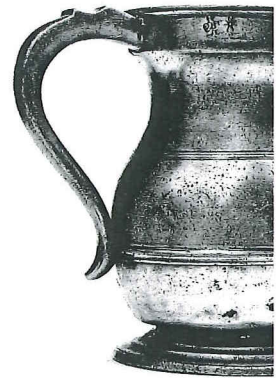
s after an anonymous 16th century Flemish  
 'St. Francis.

The second edition of *A Guide to the Early Christian & Byzantine Antiquities in the Department of British and Medieval Antiquities* printed by the British Museum in 1921 lists under the heading 'Wall Cases 1 & 2': 'a carved wooden panel signed by Michael Condopidius of Naxos, representing the illness of St. Francis' and notes that it 'illustrates the work of a Greek under Italian influence'.

Saint Francis of Assisi (b. 1181/1182 – d. 1226) was an Italian Catholic friar and preacher. He founded the men's Order of Friars Minor, the women's Order of St. Clare, and the Third Order of Saint Francis. Though he was never ordained to the Catholic priesthood, Francis is one of the most venerated religious figures in history.

In 1224, he received the stigmata, making him the first recorded person to bear the wounds of Christ's Passion. He died during the evening hours of October 3, 1226, while listening to a reading he had requested of Psalm 140.

On July 16, 1228, he was proclaimed a saint by Pope Gregory IX. He is known as the patron saint of animals, the environment, and is one of the two patron saints of Italy. It is customary for Catholic and Anglican churches to hold ceremonies blessing animals on his feast day of October 4. He is also known for his love of the Eucharist, his sorrow during the Stations of the Cross, and for the creation of the Christmas crèche or Nativity Scene.



32

29  
 A late 17th century triple-rimmed  
 circa 1690  
 Hallmarks to the rim of John (1591, OP 857), together with  
 £200 - 300

30  
 A late George III pewter sp  
 Having a slender tapering dru  
 base, knopped domed-lid anc  
 curved handle with fish-tail te  
 £200 - 300

31  
 A pewter dome-lidded flag  
 The cylindrical tapering drum  
 a spreading foot, knopped dc  
 curved handle with shield ter  
 £200 - 300

Provenance: Ex Cyril Minchin  
 TM3330A to the underside o  
 may refer to the maker Munc  
 1760-1773).

32  
 An early 19th century pewt  
 and a half-gallon example  
 Each with verification marks t  
 £200 - 300



# Bonhams



## **The Oak Interior including Textiles**

Tuesday 3 June 2014  
Oxford