

6916

PARKE-BERNET GALLERIES, INC.

30 EAST 57 STREET
NEW YORK



Public Auction Sale

March 17, 18, 19, and 20

Collection of the Late MARY MARGARET YEAGER

Wilkes Barre, Pa.

Historical Blue Staffordshire and 'Gaudy Dutch' Pottery

AMERICAN AND ENGLISH
FURNITURE

This historic china is in superb condition and contains many complete assembled sets as well as rare historic single items. Among the many rarities are examples of *Landing of Lafayette*; a complete set of Adams American views in pink with all plates in dozens and some platters in duplicate; in the *Arms of States* series there are Pennsylvania, New Jersey and Delaware platters; New York, South Carolina and Rhode Island plates and a Maryland basin and ewer. Over 150 pieces of 'Gaudy Dutch' including 60 in the *War Bonnet* pattern alone.

Many fine pieces of American and English furniture are included in the sale, as well as Worcester, Derby and Chelsea porcelain, Toby jugs and about 40 *millefiori* glass paper weights.

ON EXHIBITION FROM MARCH 13

Illustrated Catalogue \$1.00

SWISS PEWTER FOR LAMP BASES

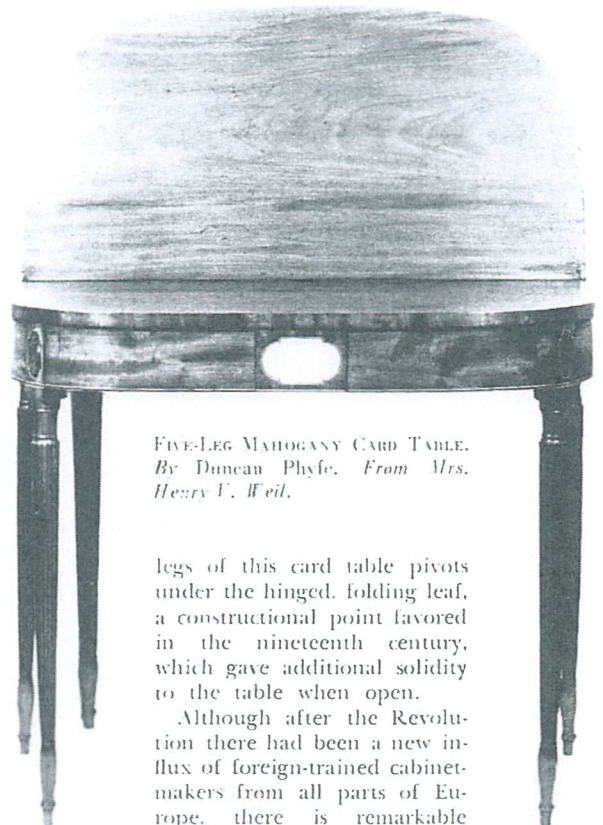
Three lamp bases formed of pieces of eighteenth-century Swiss pewter were noted recently at the galleries of Ward & Rome. Their texture and color as well as interesting form make them especially adaptable for this purpose as they can be used either in period rooms or modern interiors. The flagon in the center is a typical Zurich *goeken-kannen* or bell-can and on the right is a hexagonal *pitsche*, or wine can, such as was used by the peasants. One of these (*left*) shows the partly obliterated mark of Schaffhausen. The bell-can in the center is dated 1780 and has the punched initials *MVK* over *MBSH*. The punched pattern around the spout is an attractive addition to an otherwise severely designed piece. The hexagonal can with a spout, dated 1720, like the *pitsche*, is an unusually pleasing form as the vertical lines emphasize the fine quality of the surface of old pewter.



CONTINENTAL PEWTER FLAGONS (eighteenth century). Used for lamp bases. From Ward & Rome.

NEW YORK CARD TABLE (c. 1810)

The reeding and construction of a five-leg card table with folding top which is shown by Mrs. Henry V. Weil is of the type associated with the name of Duncan Phyfe as it conforms to the high standards of workmanship and points of design of known pieces. It is, however, impossible to venture definite attributions to the name of Phyfe, if only because he had competitors who produced works of similar quality and employed the same style motifs. One of the



FIVE-LEG MAHOGANY CARD TABLE.
By Duncan Phyfe. From Mrs.
Henry V. Weil.

legs of this card table pivots under the hinged, folding leaf, a constructional point favored in the nineteenth century, which gave additional solidity to the table when open.

Although after the Revolution there had been a new influx of foreign-trained cabinetmakers from all parts of Europe, there is remarkable homogeneity in the furniture styles followed all along the Atlantic coast. The furnituremakers were sharing in common the designs of Hepplewhite, Sheraton, and Shearer. Among the newcomers none had a more successful career than the Scotch Duncan Phyfe.