

6902

(Collectors' notes, continued from page 52)

G. Coldwell in a fan

HERE'S ONE for the pewter collectors: a touch that isn't in any of the books (yet), on a form that is rare, if not unique, among surviving pieces by its maker. The form is a pint pot, the maker is George Coldwell (w. New York 1787-1811), and the mark is in the shape of a fan with G. COLDWELL across the top and a simple foliate design below. The only marks firmly assigned to Coldwell until this appeared were COLDWELL or G. COLDWELL in serrated rectangle.

This addition to the pewter record came to our attention in a slightly roundabout fashion. To begin with, the owner of the pint pot, Michael K. Brown, brought it with him one evening to Beatrice Rosenblum's class in "Studying History through Antiques" at the Orange County Community College in Middletown, New York. His idea was to show the pot (it has been in his family for many generations) to that evening's guest lecturer, John J. D. Feyko. Mr. Feyko is a pewter collector who knows his touches, and he recognized this one right off the bat as a "hitherto unrecorded" belonging to a particularly colorful and somewhat mysterious New York pewterer. He immediately reported his find to the authority on American pewter, Ledlie I. Laughlin (for more about Coldwell see Laughlin, *Pewter in America*, Vol. 2, 1969, pp. 23-26 and Vol. 3, 1971, pp. 111-113), and Mr. Laughlin generously suggested that he share it with us. So here it is, with our thanks to all concerned.



Pewter pint pot by George Coldwell (w. New York 1787-1811). Height 4½; diameter at lip, 3¾; diameter at base, 4 inches. Collection of Michael K. Brown.



Mark inside the Coldwell pint pot.

Michael Allison

IN HIS *American Furniture The Federal Period* (New York, 1966, p. 352) Charles F. Montgomery says, "Perhaps no furniture is so typical of New York cabinetmaking of the second decade of the nineteenth century as the pedestal form of tables with long, concaved legs and urn shaft made by Duncan Phyfe and his contemporaries." Mr. Montgo-

(Continued on page 142)



A mahogany roll-top child's bureau on square tapering legs, having four front drawers and five cubicles and two drawers inside. Ca.1780-90. 23¾" high, 21½" wide, 10½" deep.

In our London stock

Otto M. Wasserman

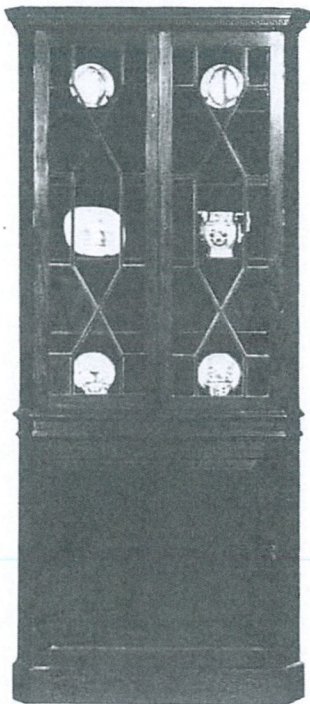
Antiques and Works of Art

Box 2224, Palm Beach, Florida 33480

Telephone: (305) 655-4895

Member of the Art and Antique Dealers League of America, Inc.

SPECIALIZING IN
CHINESE EXPORT PORCELAIN — SINCE 1926



Antique English corner cabinet, mahogany, circa 1800.

Height: 7 ft. 2 in.
Front: 3 ft.,
side: 2 ft.

SARAH POTTER CONOVER, INC.

17 EAST 64TH STREET
NEW YORK, N.Y. 10021
(212) UN 1-0515