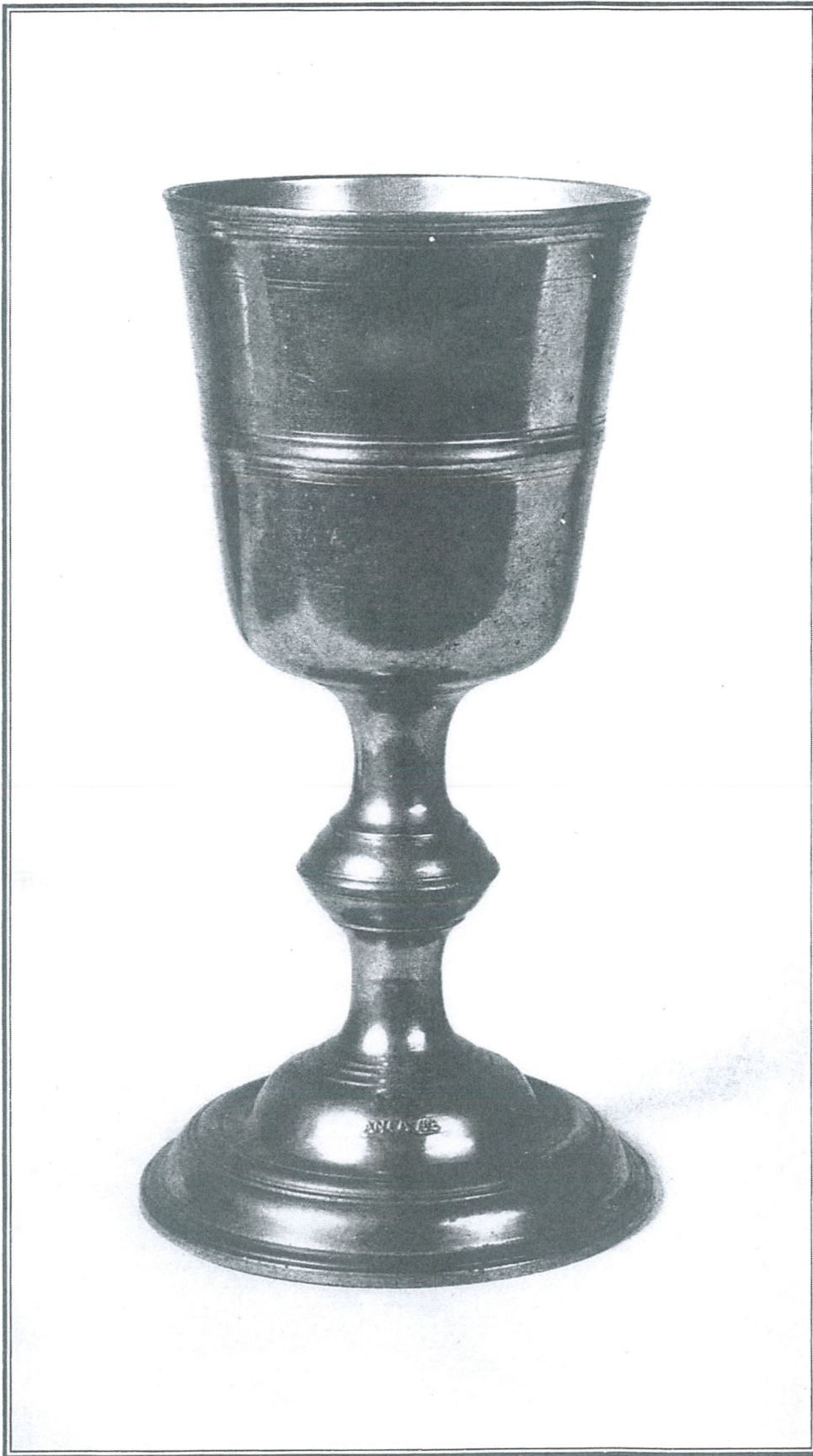


6 of December 1939?



AMERICAN PEWTER CHALICE (c. 1765-1780)

Marked ICH LANCASTER

From the collection of John W. Poole

This rare piece was made by the pewterer John Christoph Heyne, who was born in Saxony in 1715 and died in Pennsylvania in 1781, having come to this country about 1761. The relatively few known examples of Heyne's work are exceptionally interesting in showing the smith's susceptibility to the English influence with which he came in contact in the new world, while the German tradition in which he had been trained still remained dominant. Concerning Heyne and his work, see *ANTIQUES* for September 1931 (pp. 145, 150) and January 1935 (p. 23), where his style is discussed.

This handsome cup closely resembles a covered chalice by the same maker in the collection of Leditia I. Laughlin, illustrated in *ANTIQUES* for September 1931. The slight differences of detail suggest that this may be the later piece. The knob of this stem is flatter and sharper-edged than that of Mr. Laughlin's piece; the portions just above and below the knob are smooth instead of molded; the dome of the foot is somewhat higher; and there is slight variation in the moldings around the foot and around the rim. Height, $8\frac{3}{4}$ inches; diameter of top, 4 inches; diameter of base, $4\frac{1}{2}$ inches. In the same order the dimensions of Mr. Laughlin's chalice are $8\frac{15}{16}$, $4\frac{3}{16}$, and $4\frac{1}{2}$ inches