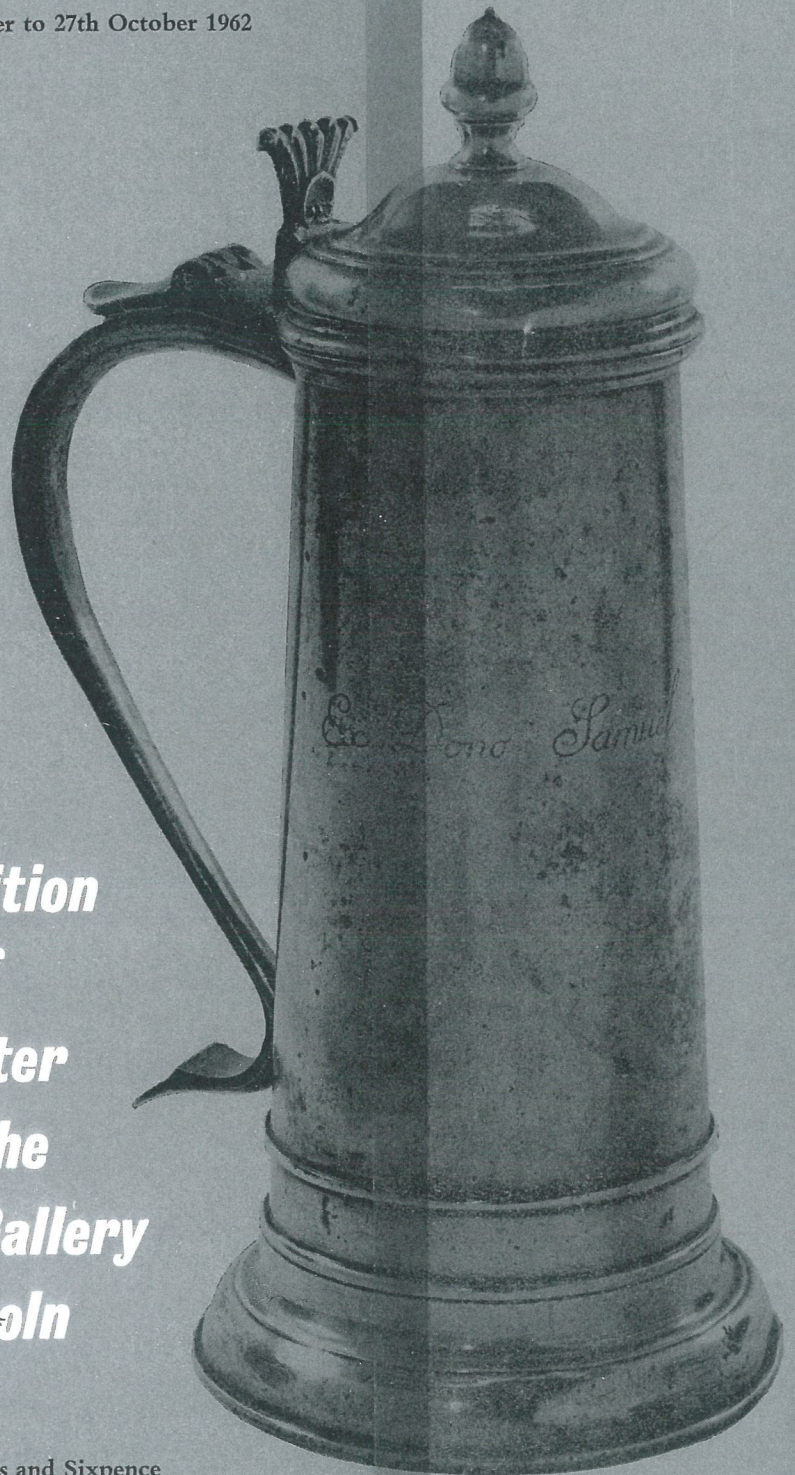


29th September to 27th October 1962

***Exhibition
of
Pewter
in the
Usher Gallery
Lincoln***

Two Shillings and Sixpence



Exhibition of Pewter

*Arranged in association with
the Society of Pewter Collectors*

City of Lincoln Usher Gallery

29th September to 27th October, 1962

Foreword

Pewterware has not received the attention it should command in Museum collections. There have been few opportunities to see the wide range of commodities produced in pewter that were in general use in the homes of this country during the 17th and 18th centuries. When it is remembered that most of the commonplace articles that are now made in porcelain, glass, aluminium and plastics were then made in pewter its importance may be clearly seen. A glance at the exhibition now arranged shows immediately the interest and variety of products of this craft: plates, dishes, drinking vessels, candle-sticks, porringers, measures, flagons and ecclesiastical pieces such as chalices and patens. Pewter was first made and used by the Romans and it is interesting to note that the tin from Cornwall, which with copper formed the alloy known as pewter, was mined and exported to Rome before the Claudian invasion of Britain. In the third century, after the closure of the Spanish mines, the British tin industry developed and pewter vessels became better known. A fine example of a Roman pewter dish found at Tallington, near Stamford, Lincs. is in the collections at the City and County Museum, Lincoln.

Though there are references to pewterers in the 11th and 12th centuries, it was not until the 14th, 15th and 16th centuries that pewter became widely used and the formation of Pewterers' Guilds in London (1348), York (1498), Bristol (1456) and in Edinburgh (1496), where a Guild of Hammersmen included pewterers in their membership, gave the craft official standing and the production and sale of pewter wares increased. In 1473 the craft received its first charter and was able to take its place among the City Livery Companies as the Worshipful Company of Pewterers. In many provincial centres groups of pewterers attached themselves to other trade guilds and the picture by the 17th and 18th centuries was of an industry widespread and flourishing in the country.

This is the first exhibition of fine examples of British pewter to be brought together in a provincial gallery. The idea developed through the enthusiasm of Mr. Kenneth Bradshaw, a Lincoln member of the Society of Pewter Collectors. We are grateful to him and to the officers and members of the society who have so readily lent their finest pieces for this exhibition. We are indebted also to the Victoria and Albert Museum and the Dean and Chapter of Lincoln Cathedral for choice pieces from their collections. Individual lenders are acknowledged in the catalogue.

On this occasion also we welcome the members of the society who gather in Lincoln for their autumn meeting. It is our hope that the meeting and exhibition will do much to stimulate an interest in pewterware among collectors and galleries.

F. T. Baker

Notes

The following abbreviations are made in the text:

ca.—circa, *cy.*—century, *D.*—diameter, *H.*—height, *in.*—inches, *L.T.P.*—London Touch Plates still in the possession of the Worshipful Company of Pewterers at Pewters' Hall, City of London, *W.*—width.

Glossary

Beefeater: A flagon having a lid somewhat resembling the headdress of the Yeoman of the Tower of London.

Booge: that part of a plate or dish between the rim and the base—the shoulder.

Bossed: dishes, plates and chargers with the centre of the well domed.

Gadroon ornament: convex curves radiating from a common centre to form a pattern.

Mutchkin: a little cap, probably the Scotsman's "nighcap". Denotes capacity and equal to half a chopin.

Tappit-hen: a type of Scottish measure. Corruption of old French word *topynett*—a quart.

Wriggled-work: decoration executed by a rocking motion of the tool.

Bibliography

Cottrell, Howard H.: *Old Pewter, its makes and marks*, Batsford, London, 1929.

Michaelis, Ronald F.: *Antique Pewter of the British Isles*, G. Bell and Sons, London, 1955.

The Concise Encyclopaedia of Antiques, Volume 1. Compiled by "The Connoisseur", 1956.

Catalogue of Exhibits

BEAKER

- 1 H. 5½ in. James I. Body of flared formation on ovolo foot. The drum ornamented with bands of running "grapevine" decoration in four positions; at top are roundels containing Prince of Wales feathers and motto with initials H and P and crown on Tudor Rose for Henricus Princeps relating to Henry, son of James I who was created Prince of Wales 1610 and died 1612.

BLEEDING BOWL

- 2 *ca.* 1760. No maker's mark. Graduated in 4, 8, 12 and 16 ozs.

CANDLESTICKS

- 3 H. 7½ in. W. at base 5½ in. Pair. Maker J.B. Octagonal flat rim at top, base and grease tray, all edged with cable mould ornamented round base with roses and grapevine.
- 4 H. 7¾ in. W. at base 5¾ in. *ca.* 1680. Moulded stem with knob. T.M. undecipherable. Octagonal flat rim at top, base and grease tray all edged with cable mould ornamented round base with roses and grapevine. Found 1899, St. John's Street, Nottingham during excavations for new LNER railway station.
- 5 H. 7 in. W. at base 5½ in. *ca.* 1690. Maker unknown. Baluster stem with moulded octagonal base.
Nos. 3-5 illustrated in *The Concise Encyclopaedia of Antiques* plate 78, A. B. and C.
- 6 H. 5¾ in. W. at base 3¾ in. *ca.* 1680. Maker T.B. Knopped stem, gadrooned octagonal moulded base. Illustrated Michaelis, plate XV, fig. 47.
- 7 H. 7¼ in. D. at base 4¾ in. *ca.* 1680-1700. Maker T.B. Plain banded stem and fine knob. Gadrooned circular base and knob.
- 8 H. 6 in. D. 4¾ in. Late 17th *cy.* Maker unknown. Octagonal base and drip tray.
- 9 H. 4 in. D. of bases 3½ in. *ca.* 1670-80. Extremely rare pair of Stuart Tapersticks on octagonal bases.

- 10 H. 7½ in. D. of base 5½ in. *ca.* 1680. Stuart candlestick. Octagonal base. Maker's mark detrited.
- 11 H. 8¾ in. D. of base 6½ in. *ca.* 1680. Maker's mark I.F. in lozenge. Stuart candlestick. Octagonal base.
- 12 H. 7½ in. D. of base 5½ in. *ca.* 1680. Maker's mark I.B. Stuart candlestick. Grapevine decoration around octagonal base.
- Plate 1 13 H. 10¼ in. D. of base 8 in. *ca.* 1630-5. Unique pair large candlesticks. Original sconces, from Cotehele, Cornwall. Arms are of Mary Glanville, second daughter of Sir John Glanville of Broad Hinton, Wilts. who married Piers Edgcumbe, son of Sir Richard Edgcumbe in 1636. Possibly earliest datable pair of candlesticks known. Fully described and illustrated in *Antique Collector*, February 1959.
- 14 *ca.* 1670. Touch mark R.B. Unique piece. Decorated base. Cotterell 5452.
- Plate 1 15 *ca.* 1590. No maker's mark. Very rare bell based candlestick. Magnificent specimen; only one or possibly two others recorded.
- 16 *ca.* 1680. Grape and vine decoration. Lip has been replaced. No maker's mark.
- 17 *ca.* 1710-20. 2 pairs. Maker (1) G. Lowes, Newcastle (see Cotterell 3001). One by : R.E. (2) Marks almost undecipherable. Tyneside types. N.B. Candlesticks between 1690-1780 very rare.
- 18 H. 7¾ in. D. of base 5¼ in. D. of lip 2¼ in. *ca.* 1675. By —B. Touch on nozzle —B with fleur-de-lys. Octagonal base, drip shield and nozzle. Circular stem with two bands of reeding. From Llanfabon, Glamorgan. Illustrated and described in Cotterell. *National Types of Old Pewter*, fig. 156; *Connoisseur*, Dec. 1933. *Country Life*, 24th June, 1949. *Antiques*, U.S.A., June 1946.
- 19 H. 9½ in. D. at base 5½ in. Dated 1616. Flat circular base cast in relief with oblong and circular panels containing Royal arms and those of Pewterers Company of London, crowned Tudor roses, sprays of thistle and oak, name Wiliam Granger and date ANO. D. 1616. The baluster stem bears a lily pot twice repeated. Cylindrical nozzle with flanged lip, decorated with scrolls bearing large rosettes. Victoria and Albert Museum, N. M210-1925. (Purchased in Stuttgart). C. T. P. Bailey, "A Historic Pewter Candlestick", *The Burlington Magazine*, November, 1925, page 245; Victoria and Albert Museum picture-book, *British Pewter*, Plate 22.

CAUDLE CUP

- 20 *ca.* 1690. No marks. Rare item. Lower part of body decorated with modified fluting.

WINE CUPS

- Plate 4 21 H. 3¾ in. D. at top and base 2¾ in. Mid 17th cy. Maker's mark C.R. with dot above and below within diamond-shaped lozenge. Footed wine cup. Egg-cup shaped bowl engraved in wriggled work floral ornamentation, on plain stem with spreading foot. Maker's mark beneath foot. Dug up in London.
- Plate 4 22 Similar footed wine cup. Wriggled-work engraving. Foot flange bears cast diagonal gadrooning. No maker's mark.

CHALICES

- 23 H. 8½ in. Pair. *ca.* 1700. Maker unknown.
- 24 H. 6¼ in. Date uncertain. Fine base and knop.
- 25 D. 4½ in., paten 5 in. 13th cy. Chalice and Paten. Single knopped baluster stem, foot slightly damaged. Found in tomb in Lincoln Cathedral, of Simon De Barton, Archdeacon of Stow who died *ca.* 1280.
- 26 D. 4 in. 13th cy. Single knopped baluster stem. Amazing specimen there being no trace of corrosion, oxidisation or discolouration of metal, being almost in same condition as when it left the pewterers shop nearly 700 years ago.
- 27 D. 3½ in. 13th cy. Elaborate decorative applied collar on stem. Foot missing. From an unknown grave.

COMMUNION CUP

- 28 H. 3 in. *ca.* 1650. No marks. Travelling Communion Cup.

FLAGONS

- 29 H. 11¼ in. *ca.* 1640. Maker E.G. Bun lidded, double knop, tapering body and flat base. Cotterell 5614 (a).
- 30 H. 11 in. W. at base 7¼ in. *ca.* 1730. Maker unknown. Double domed lidded flagon, with hollow base and tapering body. Fleur-de-lys thumb-piece with face incorporated. Engraved with leaf and spray design, 1732 and 1733.

- 31 H. 11½ in. Dated touch mark of John Emes 1675 on the handle. Rare "Beefeater" flagon. Hall marks on lid L.T.P. 244. Very few of these flagons recorded. Engraved on body "Benington, Hertfordshire" John Emes was Master of the Pewterers' Company in 1700, the year of his death.
- 32 H. 9¾ in. *ca.* 1640. Maker C.S. possibly of Barnstaple origin. Bun lidded flagon, pierced heart thumbpiece, hall marks on lid.
- 33 H. 11 in. *ca.* 1640-50. Early knopped bun lidded flagon with rare type of thumbpiece, a dated touch RC 1637 in a beaded circle stamped underneath the base.
- 34 H. 14½ in. *ca.* 1610. James I knopped, bun lidded flagon from Bottrells Aston Church, Shropshire.
- 35 H. 11½ in. *ca.* 1680. Late 17th cy. flagon. Flat cover with lace-like frontal projection and sprayed leaf thumbpiece.
- 36 *ca.* 1680. Scottish Pot-bellied flagon, mutchkin size, from Chapel of Mansion House, Aberdeen. Touch mark I.S. on handle.
- 37 H. 11¾ in. *ca.* 1635. Maker E.G. Bun lidded. Cotterell 5614 A.
- 38 H. 13⅝ in. *ca.* 1610. Double knopped.
- 39 H. 9⅜ in. *ca.* 1625. Bun lidded with hollow moulded skirt. Nos. 37-39 illustrated in *The Concise Encyclopaedia of Antiques*, plate 77, b, c, a.
- 40 H. 12⅞ in. *ca.* 1625. Maker E.G. Knopped bun lidded flagon. Cotterell 5614 a.
- 41 H. 9½ in. *ca.* 1660. Maker Thomas Cooper. Beefeater flagon. Engraved with lobe decoration surrounding "This is my Bloud 1678". From Barton in Fabis Parish Church, Notts.
- 42 H. 8⅞ in. *ca.* 1660. Maker Francis Seagood of Lynn. Beefeater flagon. Cotterell 4168.
- 43 H. 11⅜ in. *ca.* 1630. Maker T.P. Knopped "full" bun lidded flagon. Fully moulded base.
- 44 H. 8⅞ in. *ca.* 1700. Maker W.W. Pair flat lidded flagons. Ribbon edged rim.
- 45 *ca.* 1610. Tall knopped bun lid. Erect thumbpiece.
- 46 H. 10¾ in. *ca.* 1675. Volute thumbpiece, unusual lid, like Beefeater with a dome. Trace of touch mark on handle. From Devon.
- 47 H. 11½ in. *ca.* 1690. Touch S.B. inside base. Stuart. Sprayed leaf thumbpiece.
- 48 H. 11½ in. *ca.* 1668. Maker Wm. Wetter, London. Beefeater flagon. Hall marks on lid. Twin cusped thumbpiece. Formerly in Plymtree Church, Devon. A silver flagon purchased in 1697, probably replaced this one. L.T.P. 78. Cotterell 6030.
- 49 H. 9 in. *ca.* 1670. Initials I.L. and T.B. punched within shields on handle. Beefeater flagon. Tapering body and unusual tapering lid. Twin cusped thumbpiece. Formerly in Defford Church, Worcs. John Lewis and Thomas Bough were Churchwardens there in 1672.
- 50 *ca.* 1720. Flagon and footed paten by John Newham L.T.P. 581. Cotterell 3372.
- 51 H. 12 in. *ca.* 1760. Touch of Burroughs of Dublin, inside base. Irish flagon. Appears earlier than many Irish flagons. Cotterell 716.
- 52 H. to lip 9½ in. D. of base 5⅝ in. *ca.* 1690. William and Mary flat lidded flagon. From Suckley Church, Worcestershire.
- 53 H. to lip 9½ in. D. of base 6⅝ in. *ca.* 1690-1710. Maker's mark B.L. and a fox. Lidded with shallow flat lid. Twin cusps to handle terminal.
- 54 H. to lip 8 in. D. of base 6¾ in. *ca.* 1730. Maker Humphrey Evans of Exeter. Unusual lidded flagon.
- 55 H. to lip 8¾ in. D. of base 5½ in. *ca.* 1630. Unmarked. Bun lidded flagon.
- 56 H. to lip 8⅞ in. D. of base 5⅜ in. *ca.* 1630. Maker's mark on handle. Bun lidded.
- 57 H. to lip 11¼ in. D. of base 6⅞ in. *ca.* 1690. Maker's mark G.K. with dove and olive branch.
- 58 H. to lip 8 in. D. of base 6¾ in. Maker's mark R.R. with anchor and date 1670. Beefeater flagon.

- Cover illustration 59 H. to lip $9\frac{3}{4}$ in. D. of base $5\frac{1}{2}$ in. *ca.* 1680. Lidded flagon inscribed "EX DONO SAMUEL SYMONDS, GENT". Mark detrited.
- 60 H. of chalice $7\frac{3}{4}$ in. D. of base $5\frac{3}{8}$ in. H. of flagon to lip $9\frac{1}{2}$ in. Mid 18th cy. Maker Thomas Carpenter. Flagon and Chalice. Cotterell 811.
- 61 H. $9\frac{1}{2}$ in. D. of base $5\frac{3}{8}$ in. *ca.* 1740. No maker's mark. Lidded York flagon "acorn" type. Inscribed on drum "MAURICE SEARLE, Churchwarden TETNEY PARRISH 1788" (a gift to the Church at a later date.)
- 62 H. to lip 10 in. D. of base $6\frac{7}{8}$ in. *ca.* 1760. Maker Allen Bright, Bristol. Lidded flagon. Arms on drum with initials A.T.B.
- 63 H. to lip $6\frac{7}{8}$ in. D. of base $5\frac{1}{8}$ in. *ca.* 1710. Maker I.N. Rare small lidded flagon.
- 64 H. to lip $6\frac{3}{4}$ in. *ca.* 1685. Touch mark I.F. in diamond. Banded flagon. Roughly inscribed "1585". Reputed to be date of silver communion vessels part of which this replaced. Probably from Devon.
- 65 *ca.* 1610. No marks. James I knopped bun lidded flagon. Rather squat for type.
- 66 *ca.* 1645. Maker C.N. Rare button-dome on lid. Cotterell 5809.
- 67 *ca.* 1730. Touch mark E.Q. and : Bishop. Hall marks illegible.
- 68 H. $7\frac{1}{4}$ in. to lip. *ca.* 1715. Mark illegible. Two inscriptions dated 1715 and 1833.
- 69 *ca.* 1760. No touch mark. Hall marks indistinct.
- 70 H. to lip $7\frac{1}{4}$ in. *ca.* 1750. No marks. York flagon.
- 71 *ca.* 1740. Maker's mark I.H. York flagon. Inscribed "Bought at the expence of the Parish of St. Saviours and St. Andrews, Richd Cussons and Robt. Cundall Churchwardens" 1750.
- 72 H. to knop $10\frac{1}{4}$ in. H. to lid $9\frac{1}{2}$ in. D. of base $5\frac{1}{4}$ in. *ca.* 1635. Maker E.G. an unknown maker. Catalogued by Cotterell under 5614(a). [possibly Edward Gilbert, Cotterell 1862].
- 73 H. to top of dome $9\frac{3}{4}$ in. H. to lip $8\frac{1}{4}$ in. *ca.* 1710. Maker Edward Harvey, Wigan. Straight sided York flagon. Cotterell 2185.

- 74 H. $13\frac{1}{4}$ in. D. at base 6 in. Dated 1639. Maker's touch I.E. (F) and unicorn. Cylindrical body, tapering slightly to top, with moulded bands at top and bottom and spreading moulded base. Spout embossed in lip, probably in 18th cy. Domed lid, hinged to handle, with plain raised medallion in centre and thumbpiece with heart-shaped piercing. Engraved round body Willyam Hunt Arter Dauson Church Wardanes of Fosdick Anon dom 1639. From Fosdyke Church, Lincolnshire. Victoria and Albert Museum, No. 511-1901 (Purchased from the Shoppee Collection). Victoria and Albert Museum picture-book British Pewter, plate 16a.

INKSTANDS OR STANDISHES

- 75 $11\frac{1}{2}$ in. x $6\frac{3}{8}$ in. x $4\frac{1}{2}$ in. *ca.* 1740. Maker unknown. Tray on elongated ball feet. Drawer under, 2 concave inkpots and one matching container with lid.
- 76 $7\frac{3}{4}$ in. x 5 in. Mid 18th cy. No marks. Treasury Ink stand.
- 77 $8\frac{1}{4}$ in. x $5\frac{1}{2}$ in. Early 18th cy. No marks. Claw and ball feet. The pounce pot contains some flakes of pounce.

POSSET OR TOASTING CUPS

- 78 H. $4\frac{7}{8}$ in. D. at lip 7 in. *ca.* 1685. Maker Richard Meddom. Two handled posset cup. Handles with female heads with plaited coils of hair and attenuated curved bodies. L.T.P. 212 Cotterell. 3188.
- 79 H. $4\frac{1}{8}$ in. D. of base $2\frac{5}{8}$ in. early 18th cy. Maker unknown. Two handled posset cup.
- 80 H. to lip $4\frac{1}{8}$ in. D. of bowl $4\frac{1}{4}$ in. D. across handles 7 in. *ca.* 1700-10. Queen Anne. Two handles and two thin bands of incised lines around the neck.
- 81 H. $5\frac{1}{4}$ in. D. at lip 6 in. Late 17th cy. Maker's touch F under pellet in heart-shaped shield. Circular with narrow everted lip and low foot; around lower half broad band of alternating spiral fluting and gadrooning below band of beading. Handles of double-C form ornamented with raised beading; upper and lower finials each terminate in globular knob. Victoria and Albert Museum No. M45-1945. (Alfred Yeates Bequest). Cotterell, *Old Pewter*, Plate 33e; A. B. Yeates, "Old English Pewter. A Collector's Notes, I". *Old Furniture*, July 1927, page 107; Victoria and Albert Museum picture-book, *British Pewter*, Plate 116.

- 82 H. 2½ in. D. at lip 3¼ in. Late 17th cy. Initials MD, with possibly touch or other initials (indecipherable) between. Circular bulbous body with slightly everted lip. Handles of scrolling double-C form with knob at top of each. Victoria and Albert Museum No. M46-1945 (Alfred Yeates Bequest). Cotterell, *Old Pewter*, Plate 33d; A. B. Yeates, "Old English Pewter. A Collector's Notes, I". *Old Furniture*, July 1927, page 101.

LOVING CUPS

- 83 H. 7 in. D. of base 4½ in. *ca.* 1770. Marks detrited. Two handled cup showing arms of the See of Westminster.
- 84 H. 6 in. D. across handles 10 in. *ca.* 1720. No maker's mark. Two handled wassail bowl.

BALUSTER MEASURES

- 85 H. 5¼ in. *ca.* 1675. Maker unknown. Pint hammer-head measure.
- 86 H. 5½ in. Maker R.B. with dated touch mark 1671. Bud-measure with numerous owners marks on cover.
- 87 H. 4¾ in. Maker Nathaniel Marston with dated touch mark 1687. Bud-measure with bear six times on cover and H.R. crowned on neck. Illustrated Michaelis Plate XI, fig. 37. Cotterell 3091.
- 88 H. 4 in. *ca.* 1700. Maker unknown. DV measure with sphere and J.E.B. stamped five times on the cover.
- 89 H. 5 in. *ca.* 1700. Maker J.F. with a bishop's mitre over Watton in beaded circle stamped three times on cover.
- 90 H. 4¼ in. *ca.* 1700. Stamped cover as last item.
- 91 H. to lip 5¾ in. Overall h. 6¾ in. Mid 17th cy. One pint hammer-head baluster measure.
- 92 *ca.* 1690.
1. Half pint bud measure with excise mark of James II.
2. Pint bud measure with excise mark of William III.
- 93 *ca.* 1750. Three measures with plain bodies, double volute thumbpieces. Sizes: gill, half pint and pint.
- 94 H. 11 in. Late 17th cy. No maker's mark. One gallon bud measure.

- 95 H. 9 in. Mid 18th cy. Maker W. Fasson. Half gallon volute measure. L.T.P. 977. Cotterell 1639.
- 96 H. 7 in. Late 17th cy. Maker's mark T.I. Quart bud measure.
- 97 H. 5 in. Early 18th cy. Maker J. Fasson. Pint bud measure. Cotterell 1636 or 1637.
- 98 H. 4½ in. Late 17th cy. No maker's mark. Half pint bud measure.
- 99 H. 3¼ in. Late 17th cy. No maker's mark. Gill bud measure.
- 100 H. 2¾ in. Late 17th cy. No maker's mark. Half gill bud measure.
- 101 Early 17th cy. Touch mark DB with : flaming heart. Quart wedge measure. Housemark: bull branded inside base.
- 102 *ca.* 1600 or earlier. Maker's touch of "T" in beaded circle. Pint wedge measure. Housemark Saracen's head with T.D. struck three times. Heavily gilded.
- 103 *ca.* 1650. No maker's mark. Half pint ball measure. Housemark struck three times—indistinct. Heavy scale all over one side. HR on lip.
- 104 *ca.* 1730. Mark indistinct. Sprayed thumbpiece, mutchkin size. Very rare piece.
- 105 Three early Scottish measures:
1. *ca.* 1690. Mutchkin size
2. *ca.* 1730. Half mutchkin
3. *ca.* 1730. Scots Gill
 [I.H. in heart] } marks illegible.
- 106 *ca.* 1760. Mark illegible. Halfpint "D.V." measure. Housemark very well formed Tudor monarch with Sceptre struck three times.
- 107 *ca.* 1710. No maker's mark. Quart bud measure. HR. on lip. Housemark beautiful die, goblet with foliage surround with B/BA struck six times. One side perfect, the other burned.
- 108 Three small half gill English ball measures, *ca.* 1740:
1. By A Hincham (who may be East Anglian).
2. "Pip" on thumbpiece, found on some hammerheads and buds.

3. Found at Ipswich. Marked EQ.

Slight evidence for East Anglian provenance but only five of these recorded, all of which are in half gill size. In view of rarity of half gill buds these may be an alternative form.

- 109 ca. 1685. Maker's mark Spread Eagle and "6". Half pint hammerhead measure. Very thin hammer.
- 110 ca. 1680. Maker's mark indistinct in small beaded circle on lid. Pint size hammerhead measure.
- 111 ca. 1710. Maker's mark RW in diamond. A.R. crowned. Excise mark. Gill hammerhead.
- 112 ca. 1750. Maker's mark inside base with letters M & W. Gallon capacity.
- 113 Late 17th cy. or early 18th cy. Maker's mark on outside of rim illegible. Mark inside base including date 168-. Unlidded Tappit-hen, possibly from Aberdeen. Capacity 8 ozs.

PORRINGERS

- 114 D. of bowl $6\frac{3}{8}$ in. D. $8\frac{7}{8}$ in. 16th cy. Two eared, with curved well and bossed centre. Two ears of crude "trefoil" formation cast in one piece with body. On face of one ear is punched Gothic initial K or R. Dug up in London.
- 115 D. $7\frac{3}{8}$ in. D. of bowl $4\frac{5}{8}$ in. 16th cy. Two eared, with trefoil ears (one a replacement). Ears cast in one piece with body.
- 116 D. $5\frac{7}{8}$ in. D. of bowl $4\frac{1}{2}$ in. Early 17th cy. Deep cup-shaped bowl, separately cast ear of shell design affixed with wedge-shaped bracket. Dug up in London.
- 117 D. $4\frac{7}{8}$ in. D. of bowl $3\frac{1}{4}$ in. Depth $\frac{5}{8}$ in. Mid 17th cy. Maker's touch mark WM and crescent in small beaded circle, William Mabbott, London, a freeman in 1636. Miniature porringer or wine taster. Flat base, bossed centre and outward sloping sides with ornamental ear, pierced with four hearts, separately affixed with a wedge-shaped bracket. Dug up in London. Cotterell 3029.
- 118 D. $6\frac{3}{8}$ in. D. of bowl $4\frac{1}{4}$ in. Depth $1\frac{1}{2}$ in. Mid 17th cy. Flat base, small centre boss and outward sloping sides, with ornamental pierced ear, separately affixed with wedge bracket. Ownership initials GPD on front of ear.



250



15

13





162



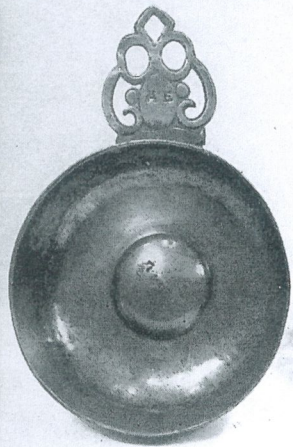
174

218



195





119



124



132



21



22

Plate 4

- 119 D. $7\frac{1}{4}$ in. D. of bowl $5\frac{1}{2}$ in. Depth $1\frac{3}{8}$ in. *ca.* 1660. Maker's mark (partly detrited) beneath bowl. Centre boss, curved sides and cast ear separately affixed. Ownership initials AE on front of ear.
- 120 D. $7\frac{1}{4}$ in. D. of bowl 5 in. Depth $1\frac{7}{8}$ in. *ca.* 1660-70. Maker's mark R.S. beneath a crown on underside of boss. Flat bossed base, outward sloping sides. Ornately cast ear in form of two dolphins and shield. Cotterell 5940.

WINE TASTERS

- 121 D. of bowl $2\frac{3}{4}$ in. Outward sloping sides and ornamental ear separately affixed. In centre of base is cast ornamental boss in form of Tudor Rose. Initials C.R. (for Carolus Rex) on ear. D. overall $4\frac{1}{8}$ in. Depth $\frac{13}{16}$ in. *ca.* 1640-50. Dug up in London. Illustrated Michaelis, Plate XXXVIII, fig. 87.
- 122 D. $4\frac{1}{8}$ in. D. of bowl $2\frac{1}{2}$ in. Depth 1 in. *ca.* 1650. Maker's mark E.W. in small beaded circle appears on reverse of ear (unrecorded). Slightly booged body and boss with surrounding "gutter" in base with cast ornamental ear separately affixed. Dug up in London.

PORRINGERS

- 123 D. 6 in. D. of bowl $4\frac{1}{8}$ in. Depth $1\frac{3}{8}$ in. *ca.* 1660. Deep cup-shaped bowl, everted lip and large foot-rim. Ownership initials C.I. appear on front of fretted ear. Dug up in London.

Plate 4

- 124 D. $6\frac{3}{8}$ in. D. of bowl $3\frac{7}{8}$ in. Depth $2\frac{1}{8}$ in. *ca.* 1670. Ornamental ear with initials N/TE and at top maker's mark A.R. with anchor between in small beaded circle (unrecorded).
- 125 D. $8\frac{1}{2}$ in. D. of bowl $5\frac{7}{8}$ in. Depth $1\frac{7}{8}$ in. *ca.* 1670-80. Makers' mark R.C. in shield (unrecorded) in centre of base. Booged sides, flat base, standing on small foot rim with large fretted ornamental ear similar to previous item. Ownership initials P.B. punched on front of ear.
- 126 D. $7\frac{5}{8}$ in. D. of bowl $5\frac{3}{8}$ in. Depth 2 in. *ca.* 1675. Maker's mark C.B. in a shield, in centre of base with "X" quality mark. Pierced ear ornamented with crescents and crosses. Cotterell 5419.
- 127 D. $6\frac{1}{4}$ in. D. of bowl $4\frac{1}{8}$ in. Depth $1\frac{3}{8}$ in. *ca.* 1675. Different type of pierced ear, punched with ownership initials E.L.

- 128 D. $6\frac{3}{8}$ in. D. of bowl $4\frac{1}{2}$ in. Depth $1\frac{5}{8}$ in. *ca.* 1680. Maker's mark I.B. in diamond lozenge (unrecorded) in centre of bowl. Booged body, circular gutter and large boss in base with narrow slightly everted collar to rim and pierced ear, variant of the foregoing. Ownership initial P punched on front of ear.
- 129 D. 5 in. D. of bowl $3\frac{3}{8}$ in. Depth $1\frac{1}{8}$ in. *ca.* 1680. Miniature porringer. Similar form but another variant of ear in two foregoing items. Ownership initials E.C. on front of ear.
- 130 D. $7\frac{1}{2}$ in. D. of bowl $4\frac{7}{8}$ in. Depth $1\frac{7}{8}$ in. *ca.* 1695. Maker's mark on reverse of ear C.M. and barrel (or Tun) of Charles Middleton, London. Similar body but different pattern of pierced ear, punched with ownership initials R and S. Cotterell 3214.
- 131 D. $7\frac{1}{2}$ in. D. of bowl $4\frac{7}{8}$ in. Depth $1\frac{7}{8}$ in. *ca.* 1695-1700. Maker's mark of Lawrence Childe, London on reverse of ear and hallmarks set in base with X quality mark. Ear punched with ownership initials L and W. Cotterell 908.
- Plate 4 132 D. $7\frac{1}{8}$ in. D. of bowl 5 in. Depth $1\frac{7}{8}$ in. *ca.* 1702. Maker's mark I.K. with stars and crescent of Joseph King, London on reverse of ear. Unique type of ear, cast and pierced with crown over initials A.R. (Anne Regina). Cotterell 2746.
- 133 D. $7\frac{3}{8}$ in. D. of bowl 5 in. Depth $1\frac{7}{8}$ in. *ca.* 1707-10. Maker's mark of Barrel (or Tun) crowned, of Henry Hammerton, London on reverse of ear. Booged sides, wide incurved collar to rim and large pierced ornamental ear. Cotterell 2105.
- 134 D. $6\frac{1}{4}$ in. D. of bowl $4\frac{1}{4}$ in. Depth $1\frac{3}{8}$ in. *ca.* 1765-70. Maker's mark of Burgum and Catcott, Bristol struck on medallion in centre of ear. Smaller porringer of normal booged type with gutter, centre boss and ear of cast ornamental type in form of coronet with floreate scrolls. (This particular porringer was made for export to America when use of this type of vessel had practically ceased in England. Purchased in United States and brought back to this country in 1958.)
- 135 D. $7\frac{3}{8}$ in. D. of bowl $5\frac{1}{8}$ in. Depth $1\frac{3}{4}$ in. *ca.* 1720-25. Maker's mark of John Langford, London on reverse of ear. Bowl of type used much earlier with straight sides and flat base and ornamental ear cast in one piece with body. Cotterell 2823.

- 136 D. across ears $10\frac{1}{4}$ in. D. of bowl $5\frac{3}{8}$ in. *ca.* 1695-1702. Maker's mark of Samuel Lawrence, London (unrecorded) who took his freedom in London Pewterers' Company in 1687. Two-eared porringer, base with boss bearing cast ornamental portrait of William III and two plain fretted ears. Illustrated Michaelis, Plate XXXVIII, fig. 88.
- 137 D. across ears $10\frac{7}{8}$ in. D. of bowl $6\frac{1}{8}$ in. *ca.* 1689-94. Two eared, base with boss bearing cast ornamental medallion depicting William III and Mary. Two ears with cast decoration in form of two dolphins, each with ownership initial B.
- 138 *ca.* 1695. Maker W.B. Excellent condition, workmanship and rarity make this very fine piece.
- 139 H. 3 in. D. 6 in. Late 17th cy. Touch of John Waite, London on underside of one of pierced handles (given leave to strike 1673/4). Bulbous body with two pierced handles. Flattened cover with turned knob, latter a modern replacement. Cover and inside of body decorated with cast design of conventional flowers enclosing profile portrait busts of William and Mary with crowned cipher. In centre of base and cover—Tudor rose. Victoria and Albert Museum No. M51-1945 (Alfred Yeates Bequest). Cotterell, *Old Pewter*, Plate LXI d-f; A.B. Yeates, "Old English Pewter. A Collector's Notes, II". *Old Furniture*, August, 1927, page 211; Cotterell, "Further Notes on Commemorative Porringers", *Antiques*, July 1928, pages 39-41; R. F. Michaelis, "Royal Portraits and Pewter Porringers", *Ibid.*, January, 1958, pages 59-63.
- 140 H. $2\frac{7}{8}$ in. D. at lip 6 in. Late 17th cy. Touch of Samuel Lawrence, London. Bulbous body, two pierced handles. Cast in relief in centre of bottom, portrait bust of William III. Flattened cover with cast relief design introducing Garter, arms of England, Scotland, Ireland and France, profile portrait busts of William and Mary and ciphers with royal crown supported by two amorini. Mounted on cover three cast figures of sejant lions designed to act as handles or feet when cover was used as stand. Victoria and Albert Museum No. M52-1945 (Alfred Yeates Bequest). Cotterell, *Old Pewter*, Plate LXI a-c. Also as under previous item, plus Victoria and Albert Museum picture-book, *British Pewter*, Plate 10.

SALTS

- 141 H. $2\frac{7}{8}$ in. D. $3\frac{3}{8}$ in. *ca.* 1690. Capstan salt. Maker unknown.
- 142 H. $1\frac{1}{2}$ in. D. $2\frac{3}{4}$ in. *ca.* 1680. Trencher salt. Maker unknown.

- 143 H. 1½ in. L. 3¼ in. Trencher salt.
- 144 H. 1¾ in. D. 2¾ in. *ca.* 1710. Pair Trencher salts. Maker unknown.
- 145 H. 2¾ in. D. 3¼ in. *ca.* 1730. Large cup salt. Maker unknown.
- 146 Similar item.
- 147 H. 2¼ in. D. 3¼ in. Maker —B, dated touch mark 1698 with flowers in beaded circle. Capstan salt. Illustrated Michaelis, Plate XVII, fig. 49, (right hand side.)
- 148 H. 1½ in. D. 2¾ in. *ca.* 1700. Maker? J.B. J.F. J.P. Pair Trencher salts.
- 149 H. 1¾ in. L. 3½ in. *ca.* 1700. Maker unknown. Illustrated Michaelis, Plate XVII, fig. 49 (centre).
- 150 H. 1¾ in. D. 2¾ in. *ca.* 1700. Maker unknown. Trencher salt.
- 151 H. 2¾ in. D. 3 in. *ca.* 1680. Maker R.B. Plain Capstan salt. Illustrated Michaelis, Plate XVII, fig. 49 (left hand side).
- 152 H. 1½ in. D. 2¾ in. *ca.* 1680. Maker R.B. Trencher salt.
- 153 Two Capstan salts:
1. Gadrooned, *ca.* 1705, mark T.L.
2. Plain, *ca.* 1690, no mark.
The plain type is earlier and more rare than gadrooned type.
- 154 *ca.* 1690. Maker's mark A.C. and star. Spool salt. Very rare type. Cotterell 960.
- 155 *ca.* 1670. No mark. Collared salt. Some fakes of this type but this appears to be unique specimen.
- 156 Two Bulbous Trencher salts:
1. *ca.* 1700, mark illegible.
2. *ca.* 1705, mark G. Lowes, Newcastle. Cotterell 3001.
- 157 Three Trencher salts:
1. *ca.* 1710, no mark.
2. *ca.* 1715, no mark.
3. *ca.* 1720, no mark.

TANKARDS

158. H. 5¼ in. *ca.* 1700. Maker William Hux. Excise mark W.R. Unlidded, with gadrooned body, wide swept handles. Similar to Cotterell LXXI (c). L.T.P. 574. (Cotterell 2498).
- 159 H. 6 in. Double domed lidded tankard, rams horn thumbpiece, fish tail handle. Maker Richard Going. Cotterell 1909.
- 160 H. to lip 4½ in. H. overall 6 in. *ca.* 1675. Maker's touch L.A. with fleur-de-lys in heart inside base. Small Stuart flat lidded tankard, cover engraved with wriggled work, drum engraved with bird and tulips, "swan's neck" handle with boot heel terminal. Illustrated and described in Apollo, February 1934.
- 161 H. 6½ in. H. to lip 5 in. *ca.* 1680. Touch mark inside base of Samuel Billing of Coventry. Stuart tankard, flat cover engraved with tulip, twin love birds thumbpiece and frontal projection to rim, "swan's neck" handle and boot heel terminal. Drum engraved with tulips. [Samuel Billing was in business from 1675 to 1707 and mayor of Coventry in 1704]. Cotterell 425.
- Plate 2 162 H. 6½ in. *ca.* 1690. Hall marks on lid. Maker's mark R.S. inside base. Stuart, flat cover engraved with bird and flowers, rams horn thumbpiece, frontal projection to rim, "swan's neck" handle and boot heel terminal. Drum engraved in wriggled work with birds, flowers and outline portraits of William III and Mary, crowned with a cipher under all W & MR.
- 163 H. 6¾ in. *ca.* 1680. Stuart, with flat cover, rare "oak leaf" thumbpiece, frontal projection to rim, hall marks on lid and trace of maker's mark inside base.
- 164 *ca.* 1680. Maker's mark L.S. inside base (unrecorded). Stuart tankard, flat cover having frontal rim projection, rams horn thumbpiece, boot heel terminal to handle.
- 165 H. 6½ in. *ca.* 1675. Maker's mark I.S. inside base. Rare type of Stuart tankard, flat cover engraved in wriggled work with large Tudor Rose. Drum engraved with lion rampant, lioness rampant and tulip; on tip of frontal rim projection is letter M possibly for Monmouth as tankard is reputedly associated with Monmouth rebellion, having been found on Sedgemoor. "Swan's neck" handle, ram's horn thumbpiece and boot heel terminal.

- 166 H. $6\frac{1}{2}$ in. *ca.* 1685. Touch of John French inside base. Stuart, flat cover engraved with wriggled work and decorated lace-like frontal rim projection. Drum engraved with swan and scrolls, ownership initials H.F. and a date 1641 possibly commemorative as date is considerably earlier than tankard. Scrolled thumbpiece, tightly rolled rams horn terminal to handle. Very clearly struck hall marks on cover. Cotterell 5586.
- 167 H. $7\frac{7}{8}$ in. *ca.* 1695. Maker's mark T.B. and chalice inside base. Stuart, high domed lid with frontal rim projection, the drum having gambolling lamb engraved in wriggled work. Scrolled thumbpiece. Cotterell 5478 a.
- 168 H. 7 in. Touch mark of John Spicer, London, 1706, inside base. Early 18th cy. domed lidded tankard with chair back thumbpiece. Hall marks on drum. L.T.P. 631. Cotterell 4455.
- 169 H. $5\frac{3}{8}$ in. *ca.* 1675. Maker W.B. Flat lidded, fine crest, ribbon edged rim and volute termination to handle. Body and cover decorated with roses and lilies in wriggle work.
- 170 H. $5\frac{3}{8}$ in. *ca.* 1680. Maker T.M. Flat lidded tankard.
- 171 H. $6\frac{7}{8}$ in. *ca.* 1720. Maker Richard Going. Unlidded tankard with raised bands. Cotterell 1909.
- 172 H. $6\frac{1}{8}$ in. *ca.* 1660. Maker J.B. Flat lidded tankard.
- 173 H. $5\frac{3}{8}$ in. *ca.* 1690. Maker R.S. Flat lidded, ram's horn crest, cover decorated with leaves and acorns, and body with birds, leaves, acorns and portraits of William and Mary crowned with cipher under all in wriggle work.
- Plate 2 174 H. $4\frac{1}{8}$ in. D. of base $4\frac{3}{4}$ in. *ca.* 1660. Maker unknown. Stuart flat lidded tankard, engraved in wriggle work. Twin cusped thumbpiece.
- 175 H. $5\frac{3}{8}$ in. D. of base $3\frac{7}{8}$ in. *ca.* 1660. Maker unknown. Stuart flat lidded tankard, twin cusped thumbpiece and concave drum.
- 176 H. $6\frac{5}{8}$ in. D. of base $4\frac{3}{4}$ in. *ca.* 1720-30. Maker unknown. Domed lidded, twin love birds thumbpiece.
- 177 H. $5\frac{3}{8}$ in. D. of base $4\frac{3}{8}$ in. *ca.* 1680. Maker unknown. Flat lidded Stuart tankard, twin love birds thumbpiece.
- 178 H. to lip $5\frac{5}{8}$ in. D. of base $3\frac{3}{4}$ in. Early 18th cy. unlidded tankard, with touch of James Donne. L.T.P. 422. Cotterell 1415.
- 179 *ca.* 1720. Maker John Carpenter, London. Georgian quart domed lid tankard, fluted chair back thumbpiece. Engraved on drum "In usum Ecclesia Chalden Herrin, Samuel Cherry Church Warden Anno Dom 1722". (hall marks as Cotterell 812).
- 180 *ca.* 1710. Maker T.B. Quart tankard, high dome lid, ram's horn thumbpiece. Owner's initials I.K.P. on drum each crowned. Cotterell 5467.
- 181 H. $6\frac{3}{4}$ in. H. to lip 5 in. *ca.* 1680. Maker's mark W.F. inside base, in diamond lozenge. Stuart flat lidded tankard, drum engraved in coarse wriggled work with lion crowned, a bird, tulip and acorn and cover engraved with a bird and tulips. Front of cover with fretted projection. Ownership initials K.W. at top of handle which terminates with rams horn. Cotterell 5605.
- 182 H. 6 in. H. to lip $4\frac{1}{2}$ in. *ca.* 1680. Maker's mark I.L. in shield impressed inside base. Stuart flat lidded tankard, drum engraved in wriggled work with tulips and floral ornamentation and at front rose with four main petals. Similar rose design repeated on flat cover. Handle with cast design at top and shield terminal. Cover has fretted projection at lip with ownership initials I.S.
- 183 H. $6\frac{1}{2}$ in. H. to lip $4\frac{3}{4}$ in. *ca.* 1685. Maker's mark (undecipherable) inside base. Stuart flat lidded tankard, rams horn thumbpiece, fine wriggled work incorporating large fleur-de-lys in centre, with birds perched on side petals and tulips the surrounding motif. Tudor rose engraved on cover. Ownership initials E.H. and S.E. (and three others deleted by stars) on lip of cover, which has solid ornamental projection. Handle with boot heel terminal.
- 184 H. $6\frac{1}{2}$ in. H. to lip $4\frac{7}{8}$ in. *ca.* 1688-9. Maker's mark inside base W.B. in beaded circle (unrecorded). Stuart flat lidded tankard, rams horn thumbpiece, drum decorated in wriggled work with bust portraits of William III and Mary with initials W.R. and M.R. (William Rex and Mary Regina). Large tulip at front, tulip engraved on cover. Ownership initials M.W. punched on lip of cover which has shaped solid projection at front. Handle with boot heel terminal.
- 185 H. to lip 4 in. D. of base $4\frac{3}{8}$ in. *ca.* 1670-80. Maker Peter Duffield, London. Stuart flat lidded tankard. Lid and drum engraved with wriggle work showing birds, flowers and a duck. Illustrated Michaelis, Plate XXXII, fig. 75. Cotterell 1458.

- 186 H. to lip 4 in. D. of base $4\frac{3}{8}$ in. *ca.* 1670-80. Maker Peter Duffield, London. Stuart flat lidded tankard. Engraved with wriggle work showing birds and lamb.
- 187 H. to lip 5 in. D. of base $4\frac{7}{8}$ in. *ca.* 1670-80. Maker Peter Duffield, London. Stuart flat lidded tankard. Engraved with wriggle work showing birds and a captive bear.
- Peter Duffield the maker of the three tankards above was a very fine craftsman and was twice Master of the Worshipful Company of Pewterers: in 1672 and 1688.
- 188 H. to lip $5\frac{3}{8}$ in. *ca.* 1715. Touch I.H. in heart. Lidless pint tankard. Cotterell 5666 or 5660.
- 189 *ca.* 1695. Maker Henry Seagood, King's Lynn. Flat lidded tankard. Queen Anne's Excise mark and under lid "Barney"—small village in Norfolk. This is probably village standard measure for ale.
- 190 H. to top of lid $5\frac{1}{2}$ in. D. beneath foot $4\frac{7}{8}$ in. *ca.* 1670. Maker Jonathan Ingles. Flat lid and drum decorated, lovebirds and volute thumbpiece. L.T.P. 170. Cotterell 2525. Illustrated Concise Encyclopaedia of Antiques Plate 79. D.
- 191 H. to cover $5\frac{1}{8}$ in. D. beneath foot $4\frac{1}{4}$ in. *ca.* 1680. Touch I.F. over a bird struck three times on cover and once inside on bottom. Large ovolo foot, decorated handle, Bomb thumbpiece, rams horn finial to handle. Pierced ribbon projection to front edge of cover. Unknown maker, not shown in Cotterell.
- 192 H. $7\frac{3}{8}$ in. D. $4\frac{3}{4}$ in. *ca.* 1725. Maker Robert Iles. Dome lid, engraved on drum "Henry Hounsom John Allbeney, Churchwardens", chairback thumbpiece. Formerly at Funtington Church, Sussex where churchwardens' graves may be seen. Faintly scratched beneath lid Funtington Sussex. L.T.P. 520. Cotterell 2522.

LIDLESS TAVERN POTS

- 193 H. to lip $5\frac{5}{8}$ in. *ca.* 1690-5. William and Mary lidless pint tavern pot, two hooped bands of reeding around drum. Two Excise marks (crowned W.R.) at neck. Inscription reading "Andr. Gladman att ye George, Layton Buzard" in floreate cartouche engraved at front. Ownership initials A.G. punched on handle. Illustrated Michaelis, Plate VIII, fig. 31.

- 194 H. to lip 6 in. *ca.* 1710-20. Maker's mark R.C. in shield on underside of base. Queen Anne (or George I) lidless pot, quart capacity, with hooped reeding about $1\frac{1}{2}$ in. from rim and larged curved handle with fishtail terminal.

Plate 3

- 195 H. to lip 7 in. D. of base $4\frac{1}{2}$ in. *ca.* 1690-1700. Maker Henry Frewin of Reading whose father was mayor of Reading in 1653. Maker's touch of Blackamoor's head and initials H.F. in small beaded circle stamped inside base. Excise mark on body—Crowned W.R. (for William III). Rare quart pot. Inscribed on body "John Little att Ye Horse & Jockey in Reading 99" together with terse statement "If SOLD STOLE". Reading arms stamped close to handle.

FOOTED PLATES

- 196 H. 3 in. D. 9 in. *ca.* 1710. No marks. Gadrooned base and rim.
- 197 H. $3\frac{1}{4}$ in. D. $10\frac{1}{2}$ in. *ca.* 1705. Touch of Lawrence Dyer on underside of plate. Gadrooned edge to plate and base of foot. Gadrooned fillet half way up foot. Cotterell 1481.
- 198 D. $9\frac{1}{4}$ in. *ca.* 1670. Maker unknown. Touch and hallmarks T.M. with bird.
- 199 D. of plate $8\frac{3}{4}$ in. D. of foot $3\frac{3}{4}$ in. *ca.* 1720. Gadrooning.

PATENS

- 200 D. $10\frac{1}{2}$ in. D. of rim $2\frac{1}{2}$ in. Mid 17th *cy.* Rare broad rimmed paten. Hall marks T.G. with lion passant repeated on face of rim and touch mark T.G. on reverse of rim. Arms surrounded by crossed Stuart mantling on the rim, are those of Sir Edward Lake who achieved fame fighting for Charles I at Edgehill in 1642. Subsequently became Chancellor of Lincoln Diocese, resided at Priory, Minster Yard, died 18th July 1674, buried in Lincoln Cathedral.
- 201 D. $9\frac{1}{4}$ in. D. of rim $2\frac{1}{4}$ in. Touch on reverse of rim I.I. and key (16)68. Broad rimmed paten L.T.P. 103. Cotterell 5712.
- 202 D. $8\frac{3}{4}$ in. D. of rim 2 in. *ca.* 1675. Touch mark of fleur-de-lys on reverse of rim. Broad rim with hall marks of lion passant struck four times on rim. Cotterell 5468.
- 203 D. 6 in. D. of rim $\frac{5}{8}$ in. Beaded edge. Mediaeval, excavated in York.

- 204 D. $7\frac{1}{8}$ in. D. of rim $1\frac{1}{2}$ in. Mid 16th cy. or earlier. Plain paten. Excavated Wallington, Surrey, 1945. Illustrated Michaelis, Plate XVII, fig. 49.
- 205 D. $6\frac{1}{8}$ in. D. of rim $1\frac{1}{2}$ in. Early 17th cy. Single reeded rim, punched with letters M.E. for Mount Edgcumbe.
- 206 D. $9\frac{3}{4}$ in. D. of rim $2\frac{1}{2}$ in. ca. 1660. Maker W.A. (unknown). Formerly at Saxelby Church, Leicestershire. Not shown in Cotterell. See p. 300 in Church Plate of Leicestershire by Rev. Andrew Trollope. Touch W.A. with large coronet between 4 crowned 'L's as hall marks.

PLATES, DISHES AND CHARGERS

- 207 D. $9\frac{1}{8}$ in. ca. 1700. Maker John Dole of Bristol. Narrow rimmed. Cotterell 1411.
- 208 D. 18 in. ca. 1680. Unrecorded touch mark on reverse of rim, possibly West Country. Marriage dish, engraved on multiple reeded rim with five cherubs and floral design. Well engraved with bird of fertility and flowers.
- 209 D. $22\frac{3}{4}$ in. D. of rim $4\frac{1}{4}$ in. ca. 1640. Hall marks on front and touch mark on reverse (N.D. and pelican with spreading wings on a log in beaded circle): unrecorded. Charger with broad rim bearing arms of Earl Mount Edgcumbe of Cotehele, Cornwall.
- 210 D. 19 in. D. of rim $3\frac{1}{2}$ in. ca. 1680. Maker's mark clearly struck four times on face of rim I.K. with tree in a heart. Multiple reeded broad rimmed charger. Cotterell 5749.
- 211 6 Plates. D. $9\frac{1}{2}$ in. ca. 1750. Touch of James Tisoe, London and stamp Fine British Metal. Five lobed "wavy edge" and raised gadroon border. Each engraved with heraldic device within cartouche. L.T.P. 854. Cotterell 4755.
- 212 D. $9\frac{3}{8}$ in. ca. 1710. Maker John Shorey. Gadrooned plate.
- 213 D. $13\frac{3}{8}$ in. D. of rim $1\frac{1}{8}$ in. Probably 16th cy. Bossed with crowned feather on rim. Illustrated Michaelis, Plate II, fig. 18.
- 214 D. $10\frac{3}{4}$ in. Depth $1\frac{1}{8}$ in. 3rd cy. Probably Roman Lance.
- 215 D. $14\frac{1}{4}$ in. D. of rim $2\frac{3}{8}$ in. ca. 1630. Maker William Heywood. Bossed plate.
- 216 D. $21\frac{1}{8}$ in. D. of rim $4\frac{3}{16}$ in. ca. 1630. Maker I.N.? Broad rimmed dish.

- 217 D. $20\frac{3}{8}$ in. D. of rim 4 in. Charger, decorated with Royal Arms of Charles II in well, the inscription "Vivat Rex Carolus Secundus Beati Pacifici 1662" in bouge, rim decorated with sun, moon, roses, acorns, oak leaves and tulips. Illustrated Michaelis, Plate XXXIII, fig. 77.

- Plate 2 218 D. $8\frac{1}{2}$ in. D. of rim $1\frac{1}{8}$ in. ca. 1720. Maker James Hitchman. Pair marriage plates. Peacock engraved on one and Peahen on other with marriage initials engraved on both. L.T.P. 593. Cotterell 2340.
- 219 D. $9\frac{3}{4}$ in. D. of rim $1\frac{1}{16}$ in. Maker W.C. Dish with moulded rim, deep bouge, $\frac{3}{4}$ in. wide raised circular band in dish with enamelled boss in centre $1\frac{3}{8}$ in. diameter containing Royal Arms 1405 to 1603. Engraved pentafoils in bottom of dish and on back face in mediaeval style.
- 220 ca. 1601. Maker R. Weir, Edinburgh. James I triple booge rose water bowl, Royal arms in enamel in centre boss.
- 221 D. 22 in. ca. 1662. Charger with Royal arms engraved and Stuart motto 'Beati pacifici' and portrait of Charles II engraved with tulips, acorns and date, on back in corroded surface "Henrietta Fayreweather Cherring Crosse".
- 222 D. 9 in. ca. 1670. Narrow rimmed plate. Touch S.P.C. animal and T.S., 4 shields and initials. Shields stamped in well.
- 223 D. $16\frac{3}{4}$ in. D. of rim $3\frac{1}{2}$ in. ca. 1650. Broad rimmed dish, touch mark on back, small beaded circle with fleur-de-lys and S.B., 4 shields on front rim. Owner's initials M.G. From Staffordshire.
- 224 D. 9 in. Maker Robert Hitchman. Engraved plate, wriggle work, 3 doves and tulips with date 1714. L.T.P. 593. Cotterell 2341.
- 225 D. $16\frac{1}{2}$ in. ca. 1731. Maker Robert Baldwin, Wigan. Engraved, wriggle work, tulips and foliage. Owner's initials L.A.L. with date. Multi-reeeded rim. Cotterell 212.
- 226 D. $14\frac{1}{2}$ in. Engraved, wriggle work of Lily pot design. Owner's initials F.H. on back of dish. Single reed rim.
- 227 D. 15 in. ca. 1600. Maker's touch G.B. with flower spray in circle (unrecorded). Alms dish or Rose water dish. Deep with bossed centre and broad reeded rim. Punched arched decoration round rim and initials W.C. and W.H. (possibly churchwardens) on underside of rim.

- 228 D. $18\frac{1}{4}$ in. D. of rim $3\frac{1}{4}$ in. ca. 1680. Broad rimmed charger, ownership initials B.I.M. engraved on rim in surround of mantling and hall marks of Rogert Gregge, whose touch appears on underside. L.T.P. 215. Cotterell 1999 states that Robert Gregge lived at St. Andrews, Holborn.
- 229 D. 15 in. ca. 1695. Triple reeded dish with hall marks of Leonard Terry of York on face of rim and his touch struck twice on underside. Cotterell 4697.
- 230 D. 9 in. ca. 1747. Small single reeded plate with touch of Thomas Hodges of Tiverton on underside, date punched on face of rim. Cotterell 2357.
- 231 D. 8 in. ca. 1685. Maker Martha Fly, London. Plate with multiple-reeDED rim, well engraved in wriggled work with cormorant and 3 thistles, rim with conventional ornamentation. Cotterell No. 1703 A.
- 232 D. $8\frac{1}{4}$ in. ca. 1695. Maker Edward Gregory, Bristol. Plate with single reeded rim, well engraved with crude lion crowned and rim with conventional wriggling. Ownership initials A.I. engraved and E.I. punched on rim. Cotterell 2001.
- 233 D. $8\frac{1}{4}$ in. ca. 1735. Maker Stephen Cox, Bristol who was apprenticed to Edward Gregory, maker of previous item. Similar plate, engraved with spirited lion crowned in well. Cotterell 1189.
- 234 D. $8\frac{1}{4}$ in. ca. 1725-30. Maker Francis Kingston (not recorded). Similar plate, well engraved with bird and artichokes.
- 235 D. $19\frac{3}{4}$ in. W. of rim $3\frac{5}{8}$ in. ca. 1630-40. Broad rimmed charger, bossed centre, rim punched with ownership initials T.C. (Sir Thomas Cottle of Cotehele, whose daughter Mary married Sir Richard Edgcumbe in 1636. Sir Thomas died before 1640). from Cotehele, Cornwall, home of Earls of Mount Edgcumbe. Described and illustrated by present owner in his article in *Antique Collector*, February 1959.
- 236 D. $10\frac{1}{2}$ in. W. of rim $2\frac{1}{8}$ in. Maker's mark and hall marks of N.D. (unrecorded maker). Broad rimmed plate or paten with shallow well and plain rim engraved with arms of Mount Edgcumbe. From Cotehele, Cornwall. Illustrated and described by present owner in his article in *Antique Collector*, February 1959.
- 237 D. $10\frac{1}{8}$ in. W. of rim 1 in. 16th cy. Plate with bossed centre, rim punched with device of a "spur and rowel" and Gothic initials W and M.
- 238 D. $14\frac{5}{8}$ in. W. of rim $1\frac{1}{4}$ in. Traces of maker's mark on reverse of crowned head with initials at each side in beaded circle. Queen Elizabeth I or James I deep dish (possibly an Alms dish) embellished in wriggled work with repeated triangular patterns around rim and bands of ornamentation around booge and in centre. Dish has bossed centre and raised band of ornamentation, on rim (in one of triangles) are punched ownership initials A.M.B.
- 239 D. $4\frac{5}{16}$ in. ca. 1630-5. Maker's mark C.F. with dove and olive branch (mark of Charles Flood, London, hitherto unrecorded) on underside. Small Saucer with upturned rim and bossed centre. Ownership initials E.I. on face of rim. Dug up in London.
- 240 D. $8\frac{1}{2}$ in. ca. 1715. Pair marriage plates. Maker Nicholas Jackman, London. Engraved wriggle work. L.T.P. 612. Cotterell 2552.
- 241 D. $8\frac{1}{2}$ in. 17th cy. narrow rimmed plate engraved in well. Maker's mark C.B. with lily and date 1670.
- 242 D. $16\frac{3}{4}$ in. ca. 1730. Maker Ed. Leapidge. Two Alms or Rosewater dishes, cast decoration, complementary pair, *i.e.* decoration is right hand and left hand. One stamped A.P. on rim; other M.G. and E.C. This may be vicar and churchwardens of a church or Master and wardens of Livery Company. Cotterell 2894.
- 243 D. $15\frac{1}{4}$ in. 3rd cy. Roman dish.
- 244 Set of three graded Tudor plates:
1. D. $6\frac{1}{8}$ in.
2. D. $9\frac{3}{4}$ in.
3. D. $12\frac{3}{8}$ in.
16th cy. No marks; all have monogrammed I.P. on back. Illustrated Cotterell p. 119 d, and described as "Three fine early plates, probably 16th cy. All found at Witham on the Hill, Lincs.". Yeates in the *Connoisseur* adds "belonging to a set of five".
- 245 D. $5\frac{3}{16}$ in. 16th cy. Domestic saucer. Monogrammed A.F. twice.
- 246 D. $11\frac{1}{4}$ in. Early 16th cy. Tudor rose and crown on rim—exactly as assay mark on tin. Assumed that above five plates are whole hoard from Witham on the Hill, although present owner acquired latter two from different source.

247 D. 9½ in. W. of rim 1¾ in. ca. 1663-75. Touch mark of Thomas Haward, London. No. 17 on London Touch Plate. Very fine and rare broad rimmed paten. Rim engraved in wriggled work, on front of rim "Honovr is the Reward of Virtve 1671" and in well "Honovr Virtvtis Praemivm". Cotterell 2215 and 5683.

248 D. 19⅞ in. W. of rim 3⅞ in. Maker I.S. Broad rim. Touch crowned rose with date 1659. Not shown in Cotterell, mint condition.

249 D. 9 in. ca. 1650. Maker Nicholas Kelk. Triple reed edge. Hall marks on rim. Owner's initials R.G/EW. Cotterell 2704. L.T.P. 4. Re-struck after Fire of London.

Plate 1 250 D. 11 in. W. of rim 1¾ in. Hall marks L.G. Buckle, L.H., Lion passant. Very rare engraved plate. Charles II in Boscobel Oak (Battle of Worcester 1651). Touch struck twice on rim. Owner's initials W.R.M. In view of dated touch 1682, likely that this plate dates from 1685 the death of Charles II. Three slipware dishes by Thos. Toft on same theme are known. They are at Manchester Art Gallery, British Museum, and New York Metropolitan Museum. See Connoisseur, September 1918 and Burlington Magazine vol. XI, 1907.

SPOONS AND SPOON RACKS

251 13th to 17th cy. Antique spoon rack filled with pewter spoons showing variety of knops.

252 13th to 17th cy. Antique spoon rack filled with pewter spoons showing variety of knops.

253 Moulds for making a Jersey measure. Also spoon moulds one of which has an original spoon inside.

254 Leather Black Jack dated 1649 showing similarity of line with that of baluster measures.

Index of Contributors

R. O. Boocock, B.Sc., A.M.I.E.E.

100 Glebe Road, Cambridge

29, 30, 75, 158, 159, 196, 207. 8

K. W. Bradshaw,

Bellwood, 34 Doddington Road, Lincoln.

20, 31, 32, 33, 34, 35, 36, 160, 161, 162, 163, 164, 165, 166, 167, 168, 200, 201, 202, 208, 209, 210. 22

Dr. H. G. Butterfield, M.A., M.D.(OXON),

15 Queen Anne Street, London, W.1.

112, 113. 2

R. S. Campkin,

Alameda, 41 Mackie Avenue, Hassocks, Sussex.

211. 1

R. W. Cooper, F.S.A., F.R.I.B.A.,

Punch Bowl House, Main Road, Woodborough, Notts.

3, 4, 5, 6, 7, 23, 24, 37, 38, 39, 40, 41, 42, 43, 44, 78, 85, 86, 87, 88, 89, 90, 141, 142, 143, 144, 145, 146, 147, 148, 149, 150, 151, 152, 169, 170, 171, 172, 173, 203, 204, 205, 212, 213, 214, 215, 216, 217, 218, 219, 251, 253, 254. 53

G. J. Gollin, M.A.,

The White House, Ottways Lane, Ashted, Surrey.

45, 220, 221. 3

J. L. Grant, C.I.E.,

The House on the Bend, Sea Lane, East Preston, Sussex.

8, 79, 91, 174, 175, 176, 177, 178. 8

A. A. Hatherley, F.C.A.,

The Poplars, Station Road, Little Eaton, Derbyshire.

46, 47, 76, 77, 197, 222, 223. 7

F. W. Holt,

Fawkes Field, Park Road, Menston-in-Wharfedale, Yorkshire.

48, 49, 50, 179, 180, 198, 224, 225, 226, 250. 10

R. F. Homer, B.Sc., PH.D.,
326 Nine Mile Ride, Wokingham, Berks.
51, 92, 93, 227, 228, 229, 230. 8

R. F. Michaelis,
35 Park Hall Road, West Dulwich, London, S.E.21.
1, 21, 22, 80, 114, 115, 116, 117, 118, 119, 120, 121, 122, 123, 124, 125,
126, 127, 128, 130, 132, 134, 136, 137, 181, 182, 183, 184, 193, 194, 231,
232, 233, 234, 235, 236, 237, 238, 239. 39

C. C. Minchin,
Norcot Farm, Reading, Berks.
9, 10, 11, 12, 13, 52, 53, 54, 55, 56, 57, 58, 59, 60, 61, 62, 63, 83, 94, 95, 96,
97, 98, 99, 100, 129, 131, 133, 135, 185, 186, 187, 195, 199, 240, 241. 26

E. G. Oastler, T.D., M.A., M.B., F.R.C.P., F.R.F.P.S.G.,
Dunmyat, Ralston Road, Bearsden, Nr. Glasgow.
84. 1

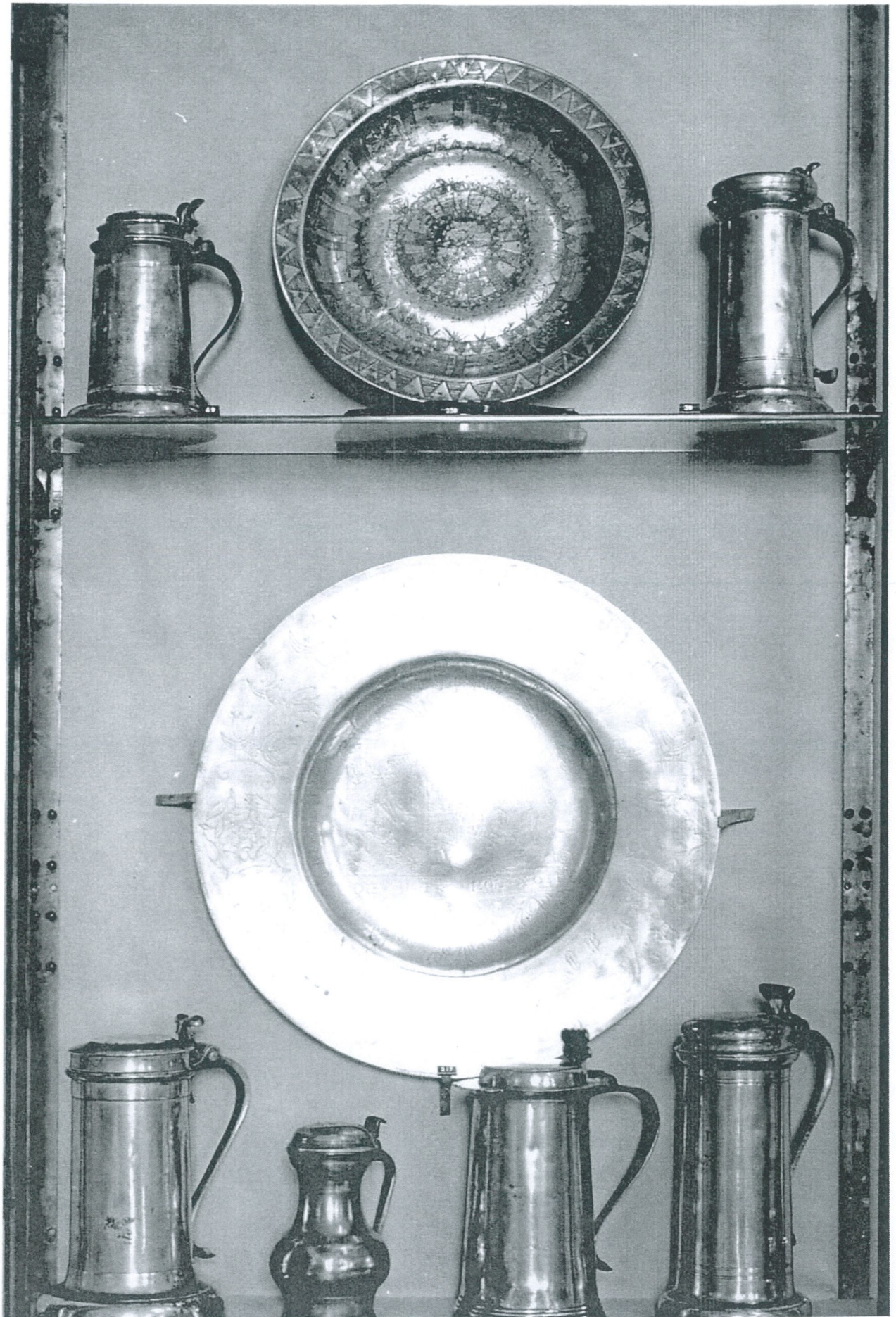
C. A. Peal,
The Wold, Stratford Crescent, Cringleford, Norwich.
2, 14, 15, 16, 17, 28, 64, 65, 66, 67, 68, 69, 70, 71, 101, 102, 103, 104, 105,
106, 107, 108, 109, 110, 111, 138, 153, 154, 155, 156, 157, 188, 189, 242,
243, 244, 245, 246, 247, 252. 40

Capt. A. V. Sutherland-Graeme, F.S.A., A.R.I.B.A.,
16 Queen Anne's Gardens, Bedford Park, London, W.4.
18, 72, 73, 190, 191, 192, 206, 248, 249. 9

Dean and Chapter,
Lincoln Cathedral.
25, 26, 27. 3

Victoria and Albert Museum, London.
19, 74, 81, 82, 139, 140. 16

Photograph from the Usher Gallery Exhibition, 1962. (Negative 3260).



39

238

49

17

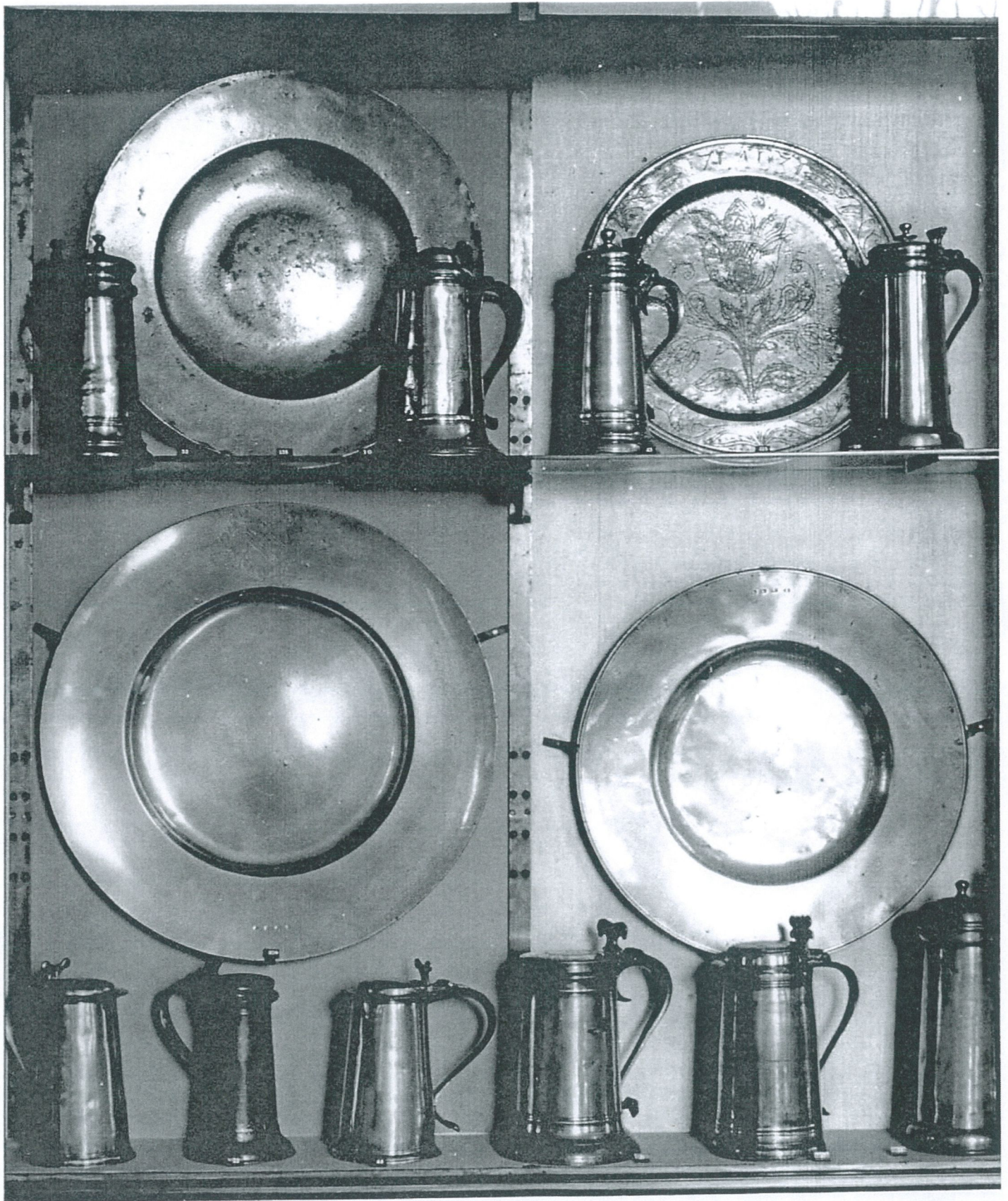
37

36

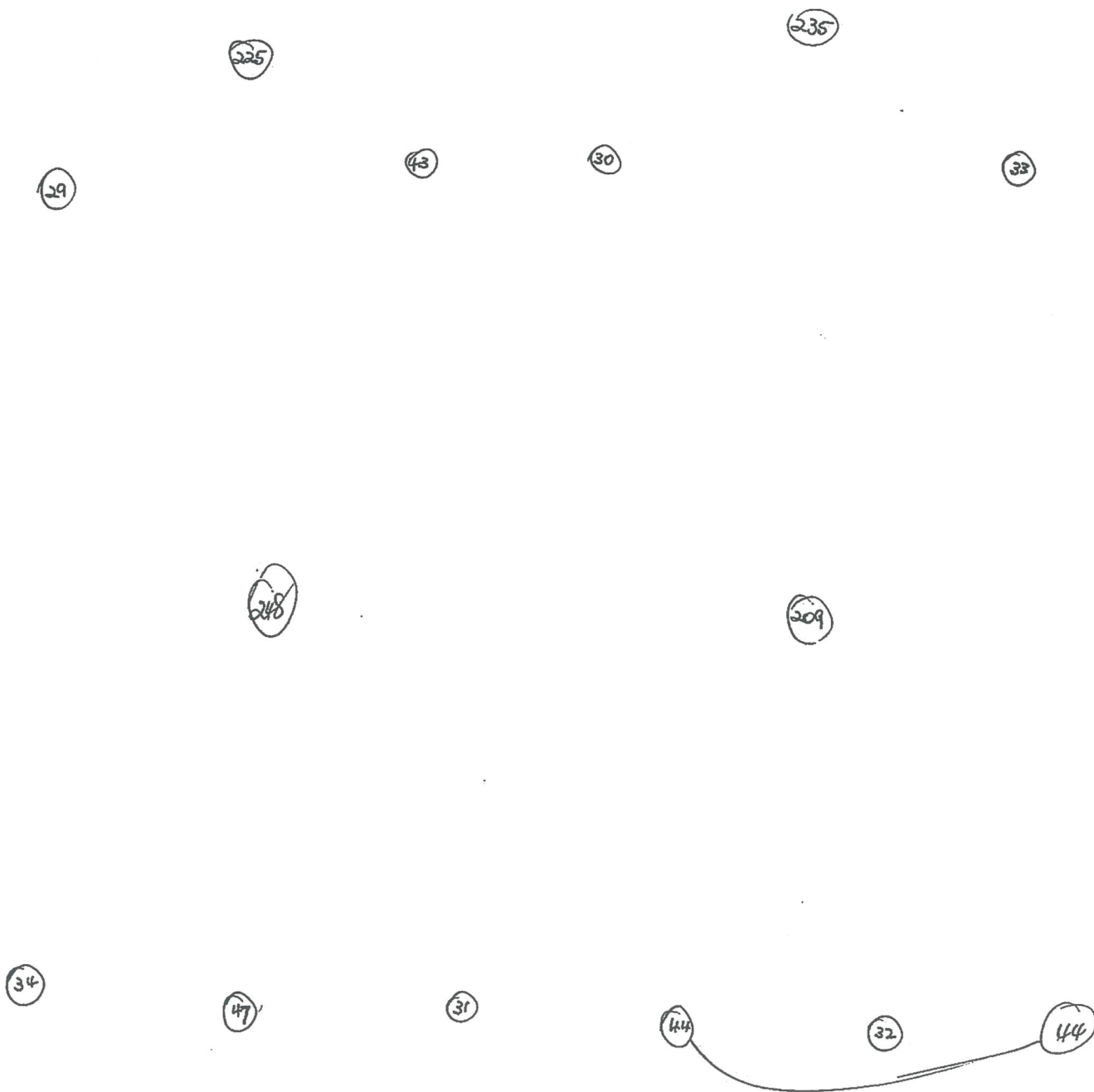
36

48

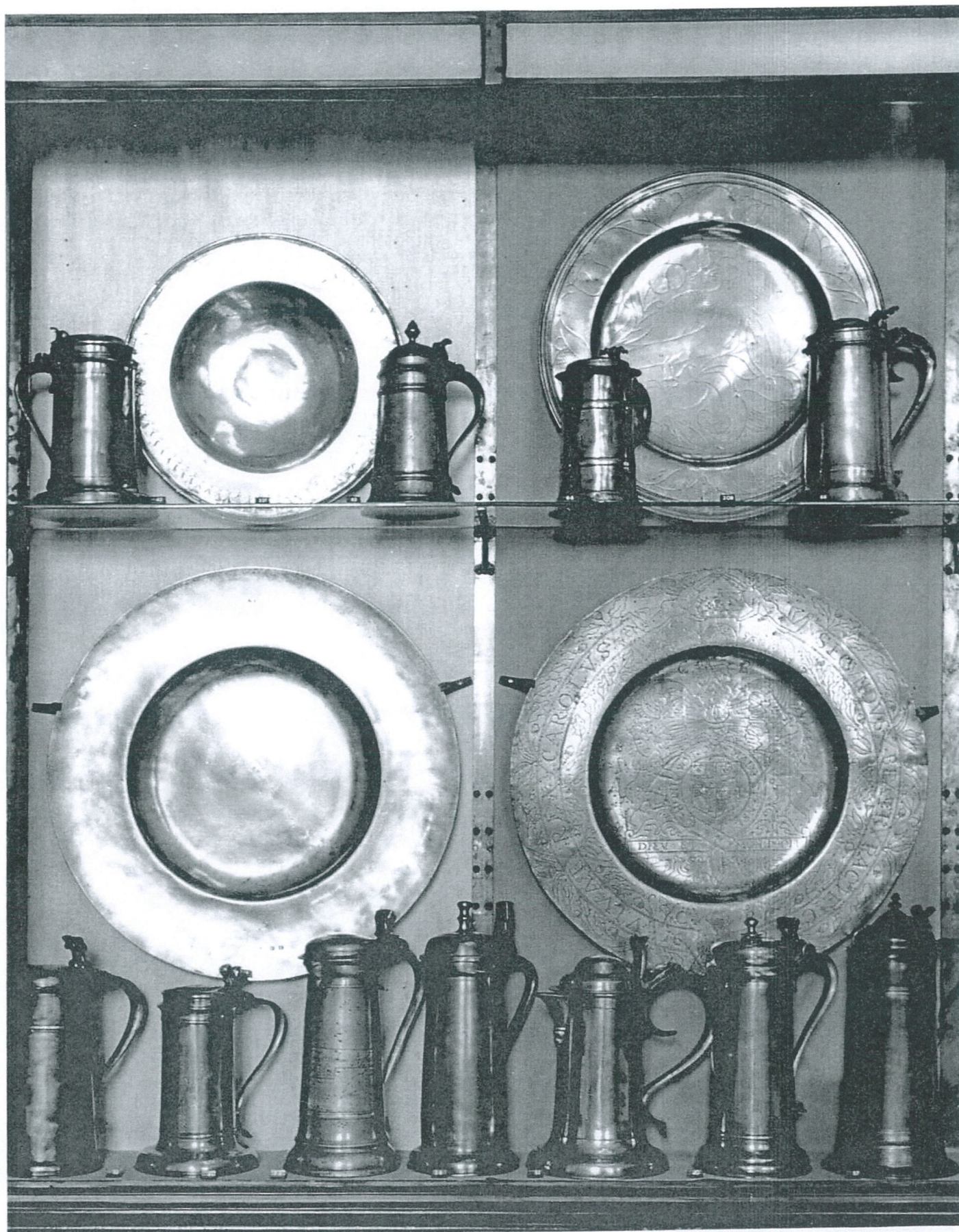
Photograph from the Usher Gallery Exhibition, 1962. (Negative 3259).



Photograph from the Usher Gallery Exhibition, 1962. (Negative 3259).



Photograph from the Usher Gallery Exhibition, 1962. (Negative 3261).



46

208

64

63

227

42

221

216

57

140

51

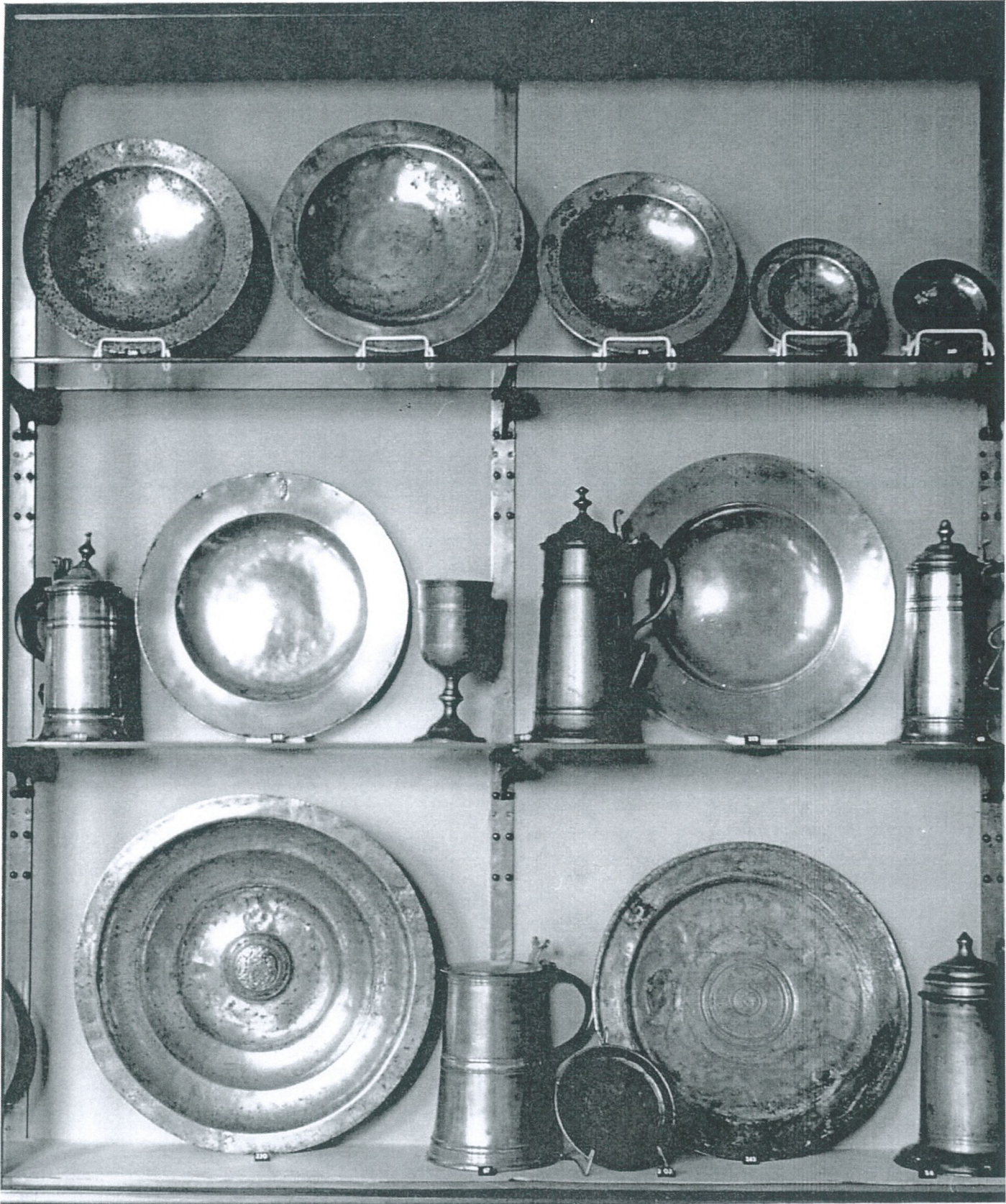
38

74

41

52

Photograph from the Usher Gallery Exhibition, 1962. (Negative 3262).



245

244

244

244

246

69

215

60

60

213

68

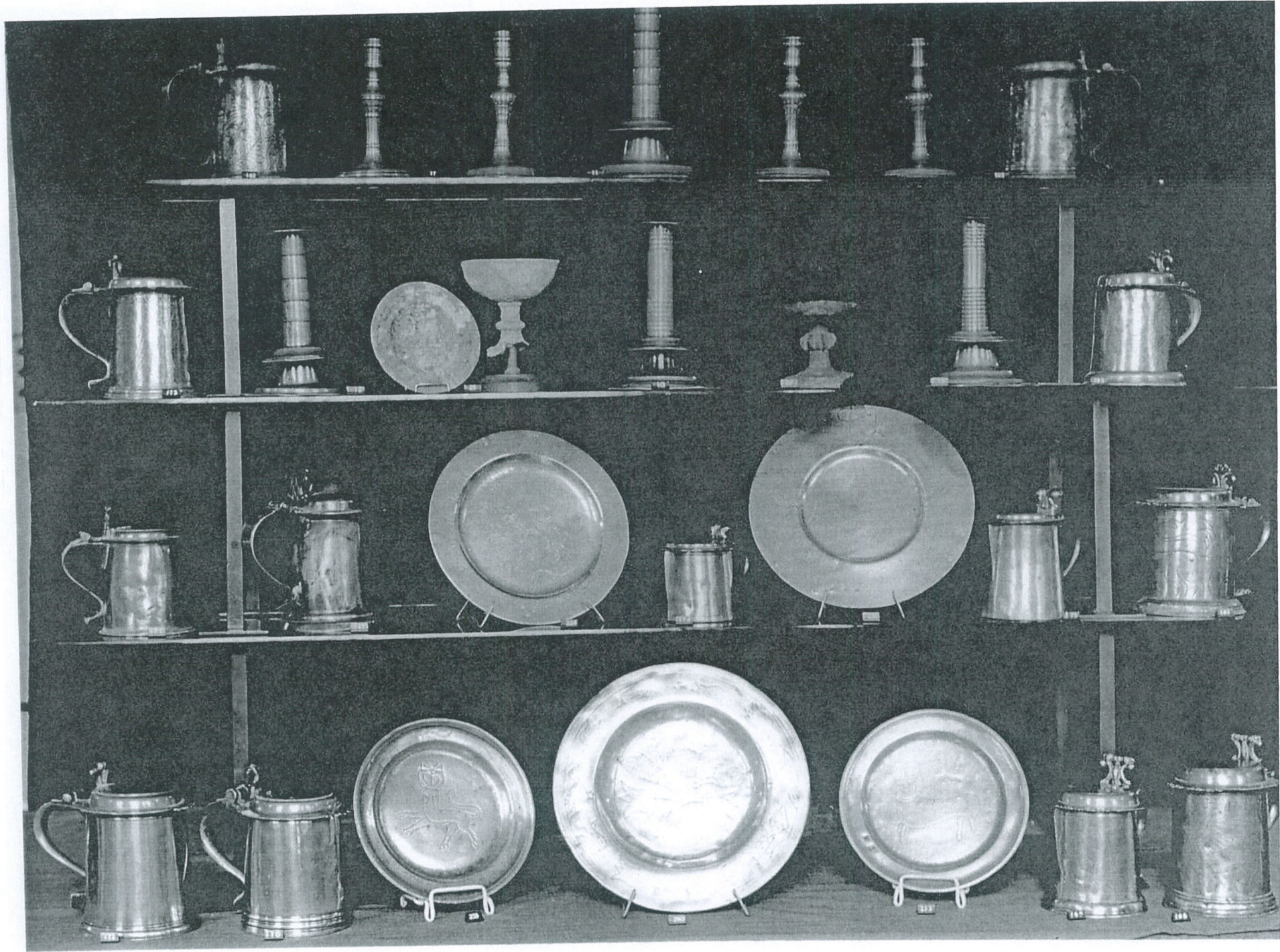
54

243

208

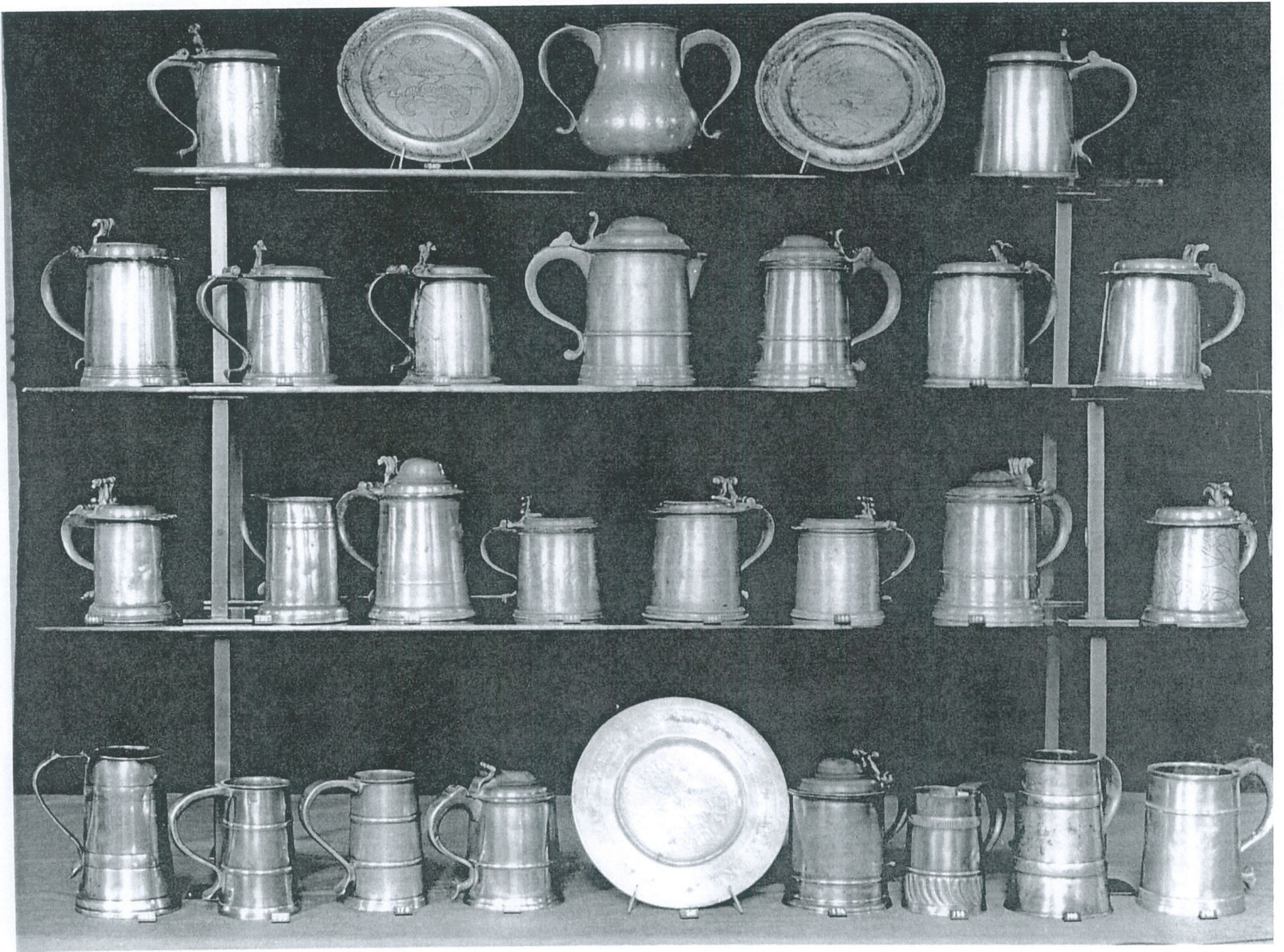
67

220

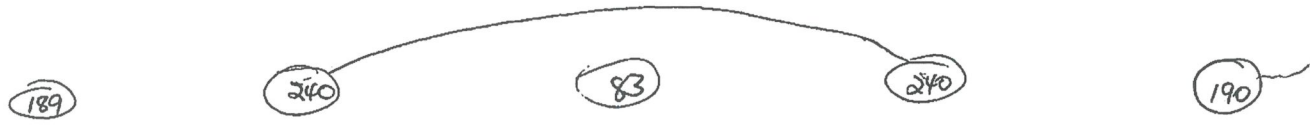


Photograph from the Usher Gallery Exhibition, 1962. (Negative 3263).





Photograph from the Usher Gallery Exhibition, 1962. (Negative 3264).



163	167	168	192	184	183	164		
160	179	186	161	185	180	188	191	
194	195	186	176	247	159	178	193	171



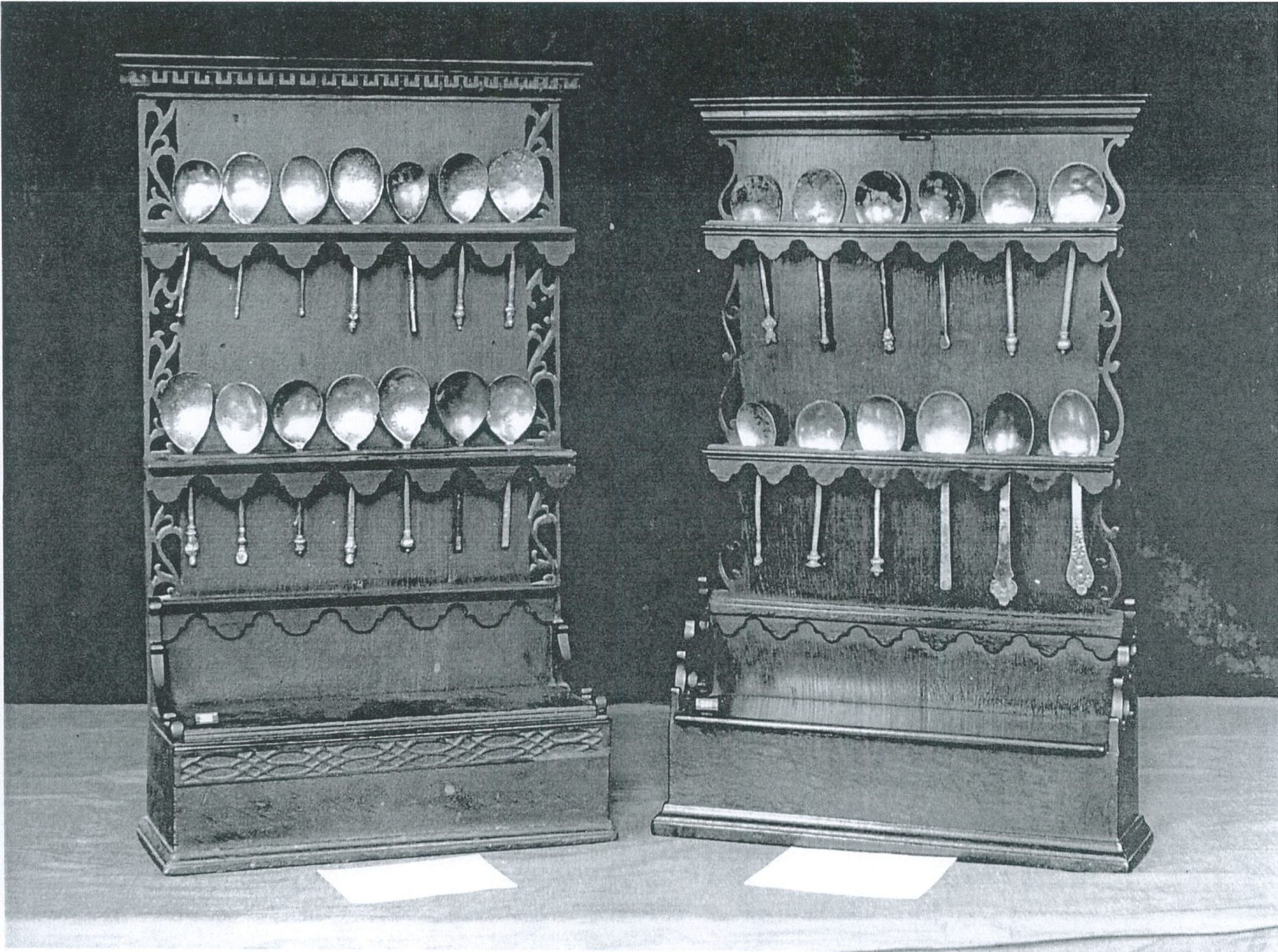
Photograph from the Usher Gallery Exhibition, 1962. (Negative 3265).

91 111 109 85 254 110 110 110 113

101 92 92 102 93 93 93 107

86 106 105 105 105 104 105 105 105 90 89

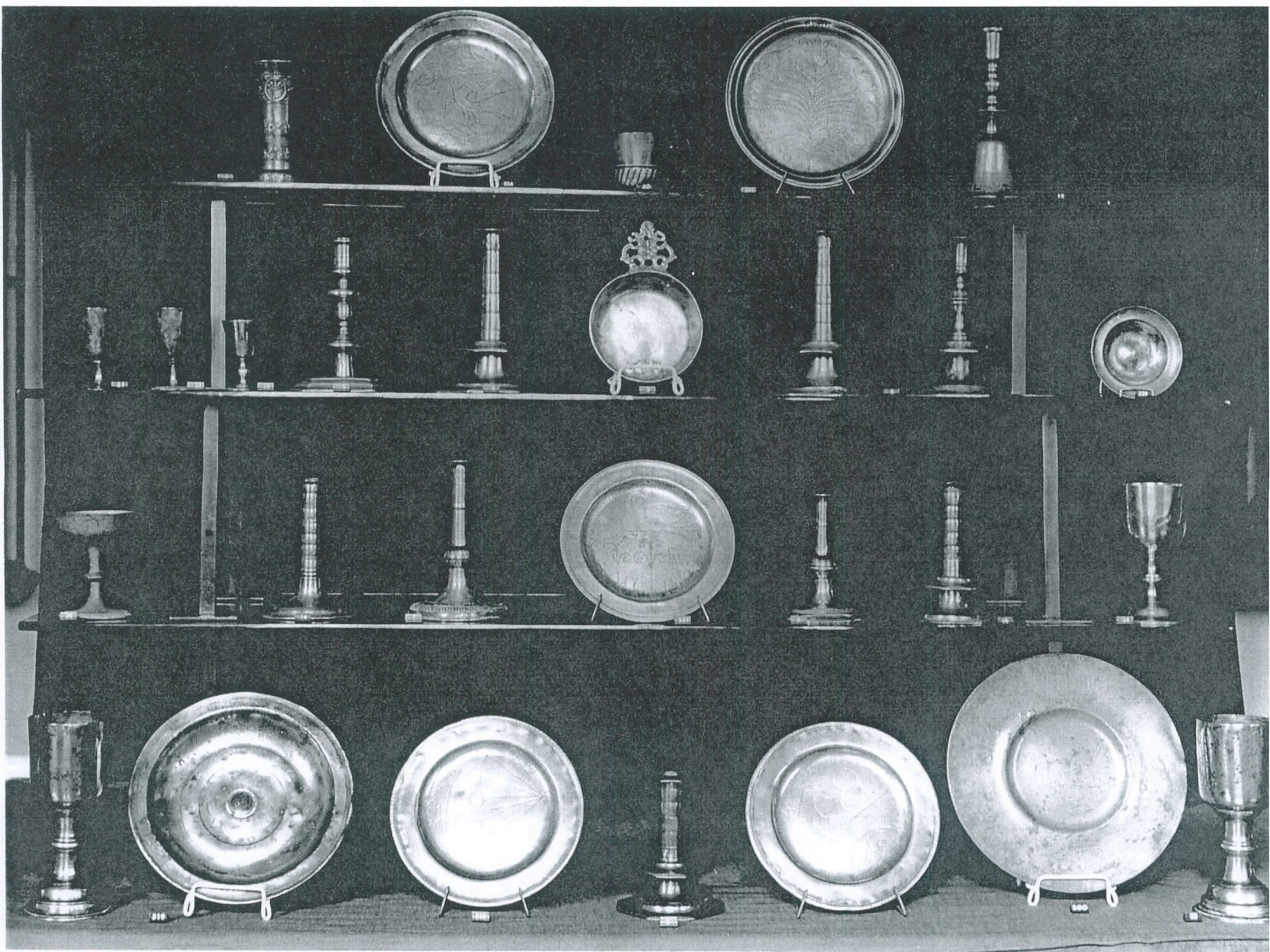
94 95 96 97 98 99 100 101 112



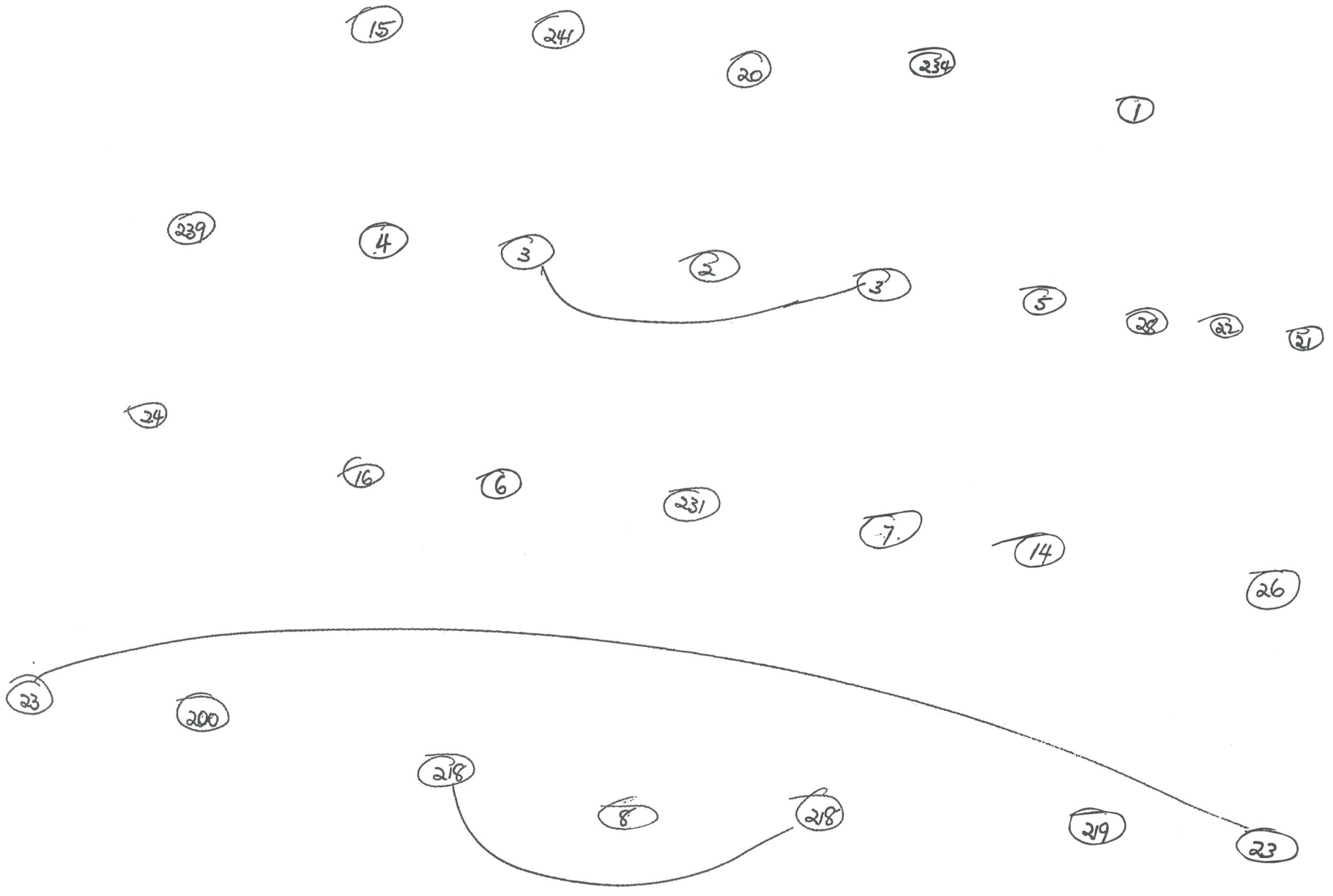
Photograph from the Usher Gallery Exhibition, 1962. (Negative 3266).

251

252



Photograph from the Usher Gallery Exhibition, 1962. (Negative 3267).



Photograph from the Usher Gallery Exhibition, 1962. (Negative 3268).



202

204

201

205

206

71

242

242

70

61

73

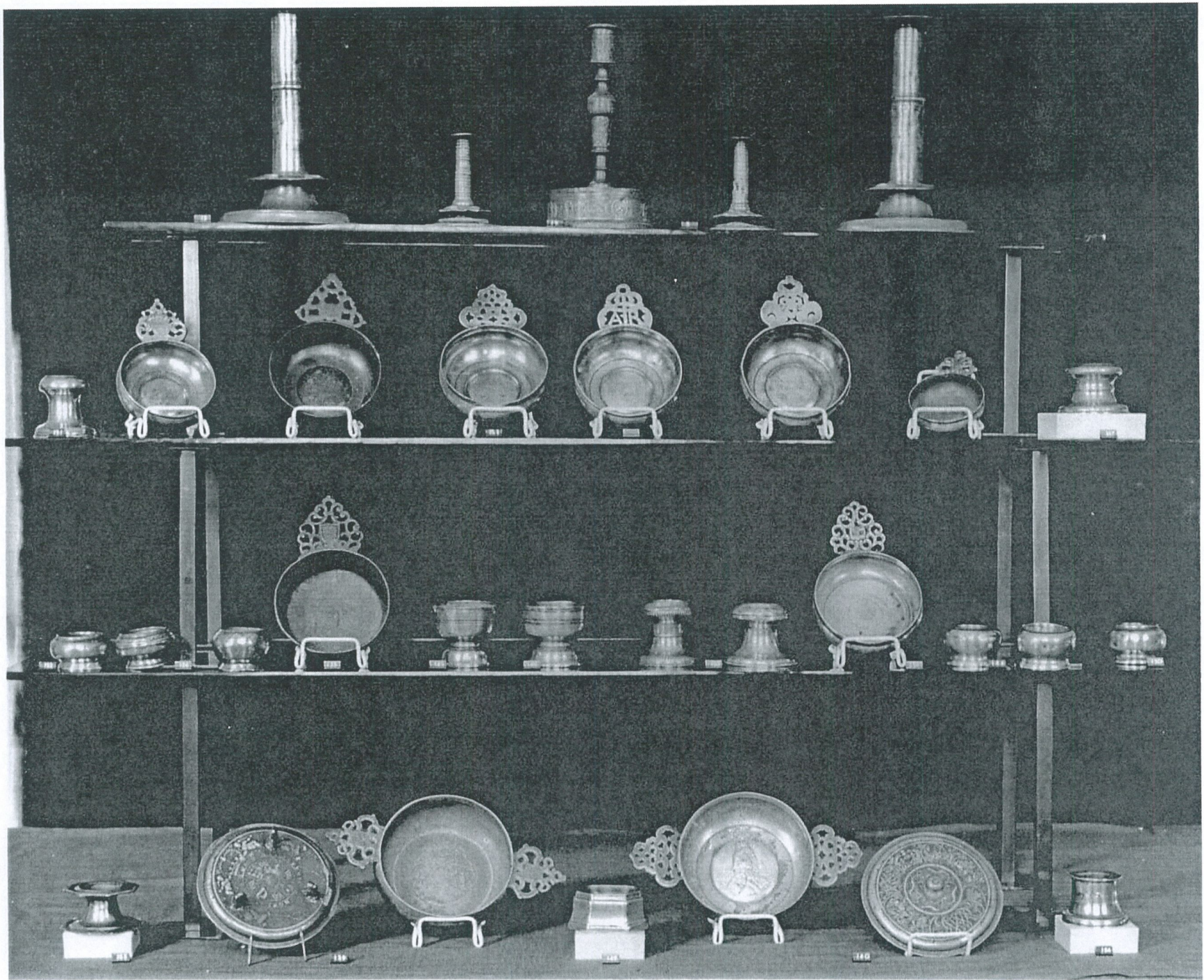
210

55

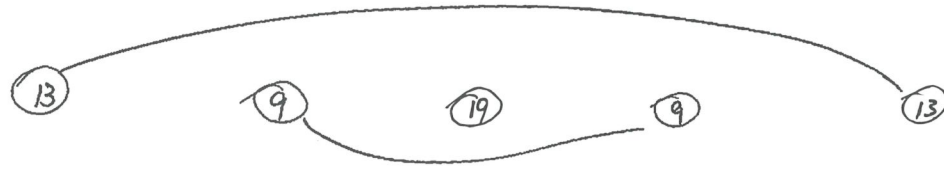
228

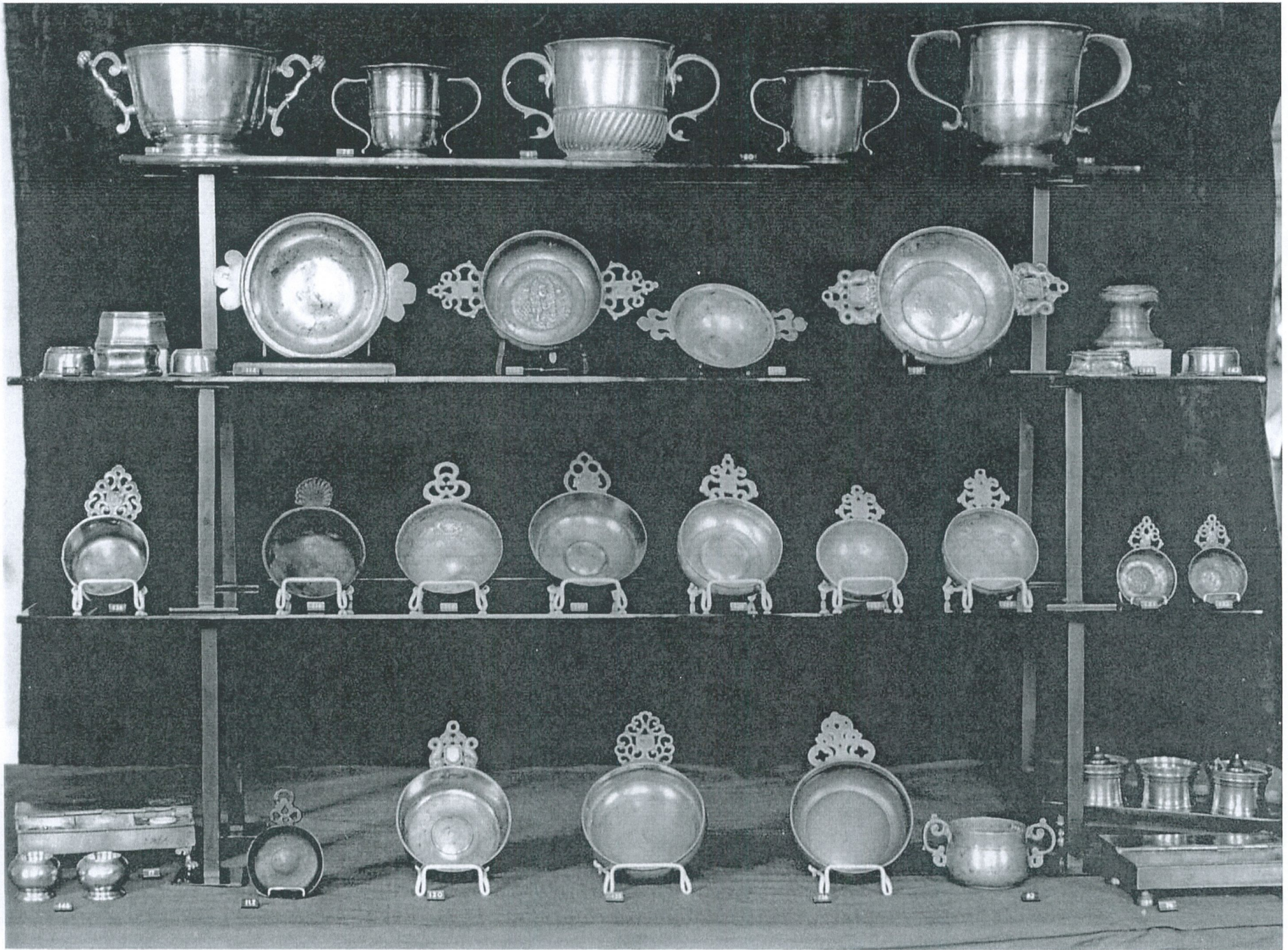
66





Photograph from the Usher Gallery Exhibition, 1962. (Negative 3269).





Photograph from the Usher Gallery Exhibition, 1962. (Negative 3270).

84

80

81

79

78

142 141 143

137

115

136

114

157 157 157

122 121

127

123

128

119

118

116

124

75 75 75

76

82

126

125

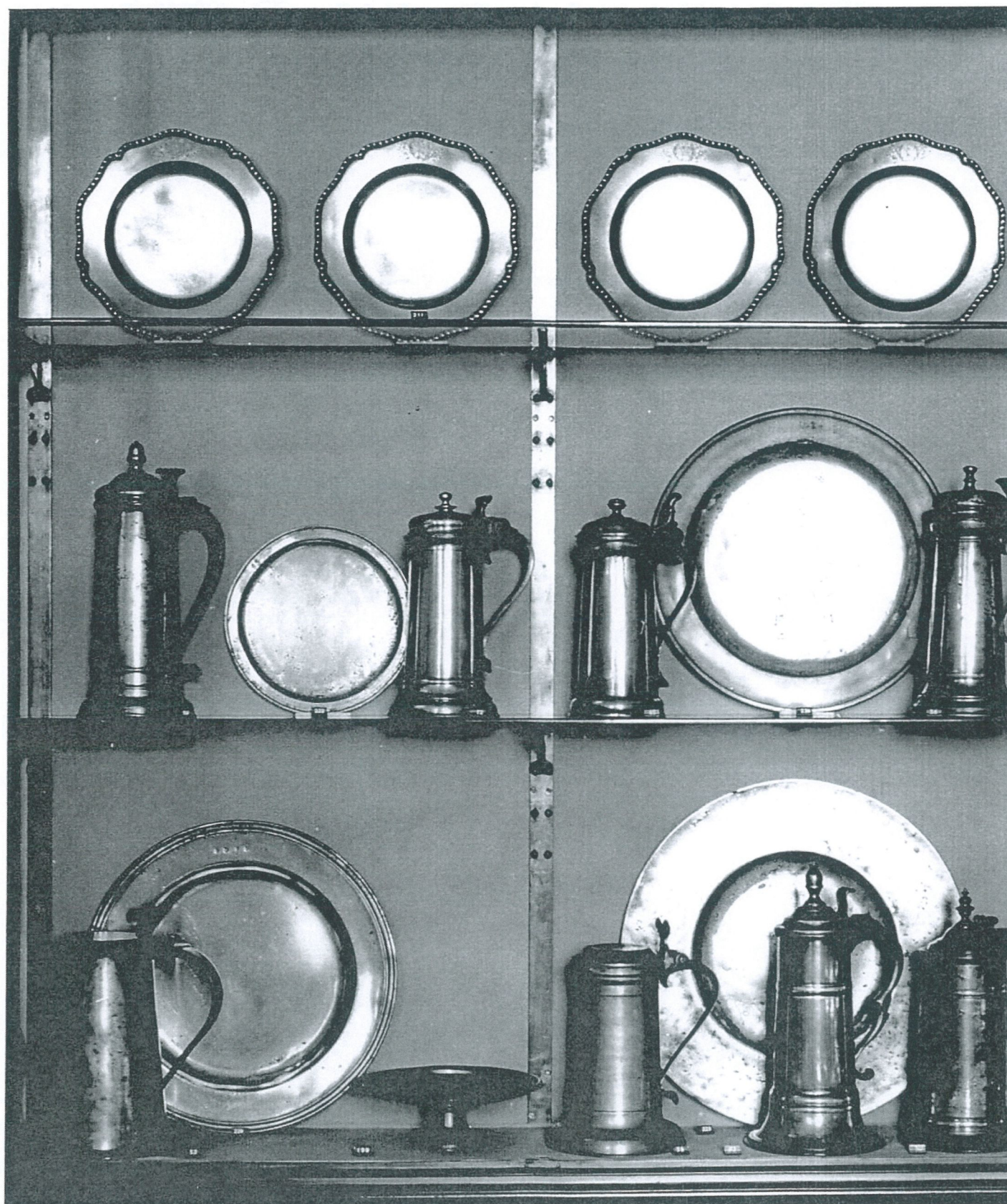
120

117

77

148 148

Photograph from the Usher Gallery Exhibition, 1962. (Negative 3271).





56

226

65

72

222

59

223

50

62

58

199

229

53