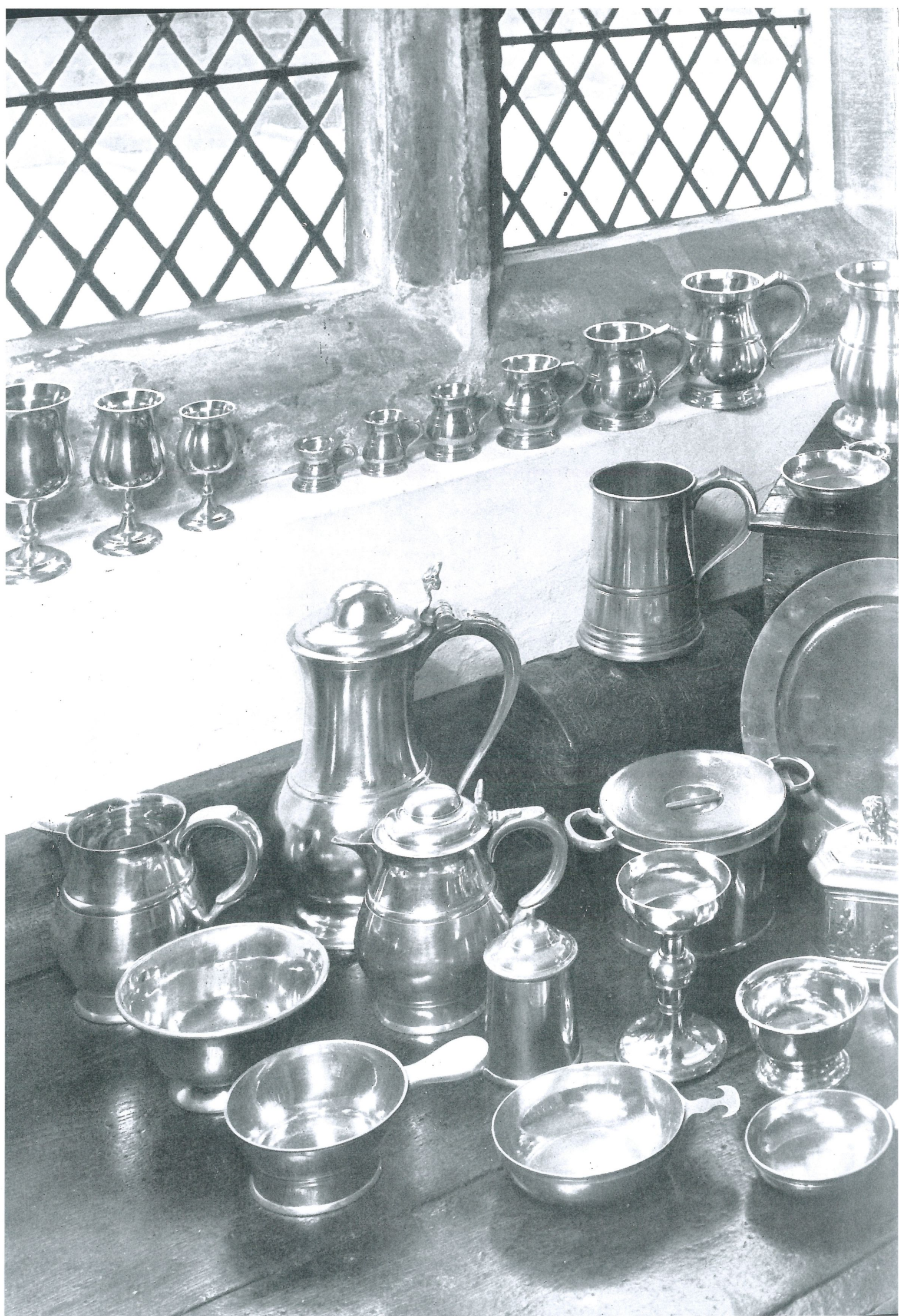




James Yates Collectors Pewter









James Yates Collectors Pewter

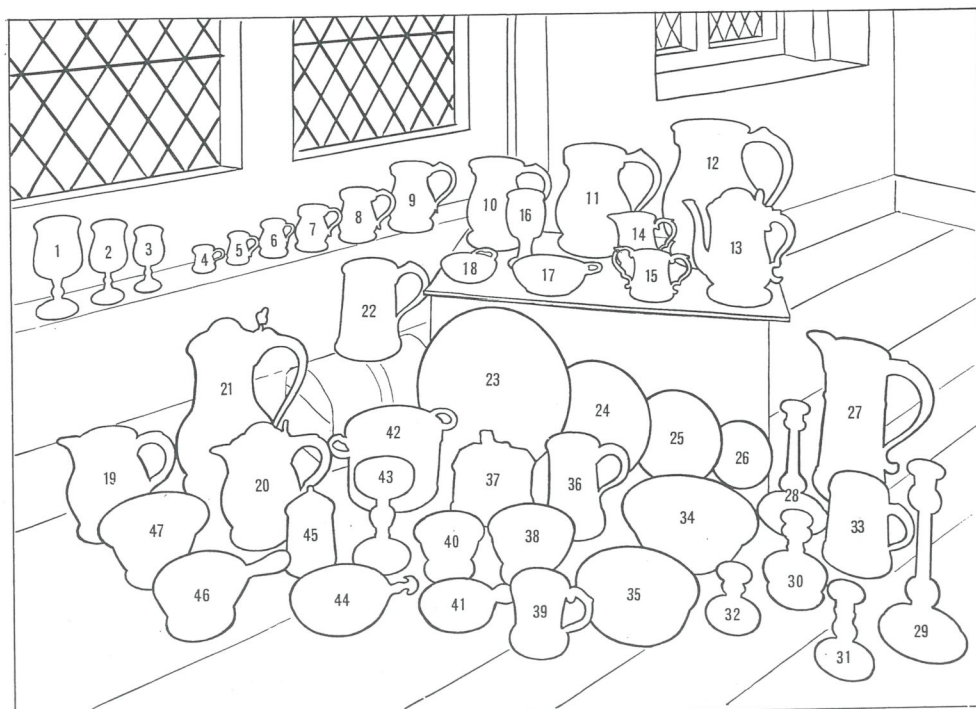
The range of fine English pewterware presented in this catalogue is created by skilled craftsmen in a factory whose history goes back beyond 1700.

In many cases the attractive pieces shown are made using moulds over 200 years old, and we James Yates craftsmen are proud to be the inheritors of the traditions, skills, moulds and designs which can be traced in an unbroken line back to the 17th century.

We have named our range James Yates Collectors Pewter because we feel that our pewter will appeal particularly to the enthusiast, who will not rest content until he can take pride in a collection of these lovely pieces.

It is our particular pride that we present them in a most authentic finish. Each piece is proud to show the inevitable marks of hand-casting, hand-turning and hand-finishing which would have been the touch-stone of fine pewter of yesteryear. Not for us the dull uniformity of modern manufactured items – our pewter looks, rings and feels authentic.

- | | | | | | |
|--------------------|---|------------------|---|------------------|--|
| 1 565ICP/10 | Georgian Bell Goblet on Knopped Stem, 10 oz size. Height 6" (150 mm) | 15 4027CP/S | George I Sugar. Height 2 $\frac{3}{4}$ " (72 mm) | 30 4308CP | Small 18th century Candlestick. Height 4 $\frac{1}{2}$ " (115 mm) |
| 2 565ICP/6 | Georgian Bell Goblet on Knopped Stem, 6 oz size. Height 5" (127 mm) | 16 4242CP | Tudor Barrel Goblet, cap. 8 oz. Height 5 $\frac{1}{4}$ " (135 mm) | 31 4309CP/L | Taper Candlestick, Charles. Height 4" (98 mm) |
| 3 565ICP/3 | Georgian Bell Goblet on Knopped Stem, 3 oz size. Height 4" (102 mm) | 17 4027CP/Scroll | Porringer with Scroll Handle. Dia. 5 $\frac{1}{2}$ " (140 mm) | 32 4309CP | Taper Candlestick. Height 2 $\frac{1}{2}$ " (63 mm) |
| 4 4030CP/1/8 gill | Newcastle pattern Measure, 1/8 gill size. Height 1 $\frac{1}{2}$ " (40 mm) | 18 4216CP | Caudle Cup with Scroll Handle. Dia. 4 $\frac{1}{4}$ " (106 mm) | 33 4011CP/1 pint | Northwood Measure with traditional Brass Rim, 1 pint size. Height 4 $\frac{3}{4}$ " (121 mm) |
| 5 4030CP/1/4 gill | Newcastle pattern Measure, 1/4 gill size. Height 2" (52 mm) | 19 4117CP | Ale Jug, cap. 2 pints. Height 5 $\frac{3}{4}$ " (145 mm) | 34 4120CP | Jacobean Basin. Dia. 8" (205 mm) |
| 6 4030CP/1/2 gill | Newcastle pattern Measure, 1/2 gill size. Height 2 $\frac{1}{4}$ " (60 mm) | 20 4030CP/F | Covered Ale Flagon, cap. 2 pints. Height 7" (178 mm) | 35 4121CP | Jacobean Basin. Dia. 6" (152 mm) |
| 7 4030CP/1 gill | Newcastle pattern Measure, 1 gill size. Height 3" (76 mm) | 21 4001CP | Regency Flagon, cap. 1/2 gallon. Height 11" (280 mm) | 36 4014CP/1 pint | Southwark pattern Tankard, 1 pint size. Height 5" (127 mm) |
| 8 4030CP/1/2 pint | Newcastle pattern Measure, 1/2 pint size. Height 3 $\frac{3}{4}$ " (92 mm) | 22 4011CP/2 pint | Northwood pattern Measure, 2 pint size. Height 6 $\frac{1}{4}$ " (160 mm) | 4014CP/2 pint | Southwark pattern Tankard, 2 pint size. Height 5 $\frac{3}{4}$ " (142 mm) |
| 9 4030CP/1 pint | Newcastle pattern Measure, 1 pint size. Height 4 $\frac{3}{4}$ " (121 mm) | 4011CP/1 pint | Northwood pattern Measure, 1 pint size. Height 4 $\frac{1}{2}$ " (112 mm) | Not Illustrated | |
| 10 4030CP/2 pint | Newcastle pattern Measure, 2 pint size. Height 6 $\frac{1}{4}$ " (159 mm) | 23 4203CP/10 1/2 | Pewter Plate 10 $\frac{1}{2}$ " dia. (267 mm) | 37 4174CP | Sir Walter Raleigh Tobacco Jar, early 19th century design. 5 $\frac{1}{4}$ " x 4" x 5 $\frac{1}{2}$ " (133 mm x 102 mm x 140 mm) |
| 11 4030CP/1/2 gal. | Newcastle pattern Measure, 1/2 gallon size. Height 7 $\frac{3}{4}$ " (195 mm) | 24 4203CP/7 1/2 | Pewter Plate 7 $\frac{1}{2}$ " dia. (190 mm) | 38 4355CP | Barber's Bowl, 17th century design, bearing the inscription "Sir: Your Quarter is up". Dia. 5" (127 mm) |
| 12 4030CP/1 gal. | Newcastle pattern Measure, 1 gallon size. Height 10 $\frac{1}{4}$ " (260 mm) | 25 4203CP/6 | Pewter Plate 6" dia. (152 mm) | 4356CP | Barber's Bowl, 17th century design, without engraving. Dia. 5" (127 mm) |
| 13 4027CP/P | George I Teapot/Coffee Pot, cap. 2 pints. Height 7 $\frac{1}{2}$ " (190 mm) | 26 4203CP/4 1/2 | Pewter Plate 4 $\frac{1}{2}$ " dia. (112 mm) | Not Illustrated | |
| 14 4027CP/J | George I Milk/Cream Jug, cap. 1/2 pint. Height 4" (102 mm) | 4203CP/12 | Pewter Plate 12" dia. (304 mm) | 39 4227CP | Elizabethan Sauce Cup. Dia. at top 3 $\frac{1}{8}$ " (79 mm) |
| | | 27 4232CP | Elizabethan Pitcher cap. 3 pints. Height 9 $\frac{1}{4}$ " (234 mm) | 40 4075CP | Small Traditional Bowl or Salt Cellar. Dia. 4" (102 mm) |
| | | 28 4312CP | 19th century Candlestick. Height 7 $\frac{1}{2}$ " (190 mm) | 41 4216CP/A | Caudle Cup with fleur-de-lys handle. Dia. 4 $\frac{1}{4}$ " (106 mm) |
| | | 29 4311CP | Jacobean Acorn Candlestick. Height 9" (228 mm) | 42 4006CP | 19th century Seething Pot. Dia. at top 6 $\frac{3}{4}$ " (163 mm) |



- | | |
|-----------------|--|
| 43 4166CP | Jacobean Acorn Cup. Height 5 $\frac{1}{2}$ " (134 mm) |
| 44 4207CP/A | Porringer with Ram Handle. Dia. 5 $\frac{1}{4}$ " (133 mm) |
| 45 4299CP | Small Traditional Jar. Dia. 3" (76 mm) |
| 46 4350CP | Grace Bowl. Dia. 5" (127 mm) |
| 47 4515CP | Spice Dish. Dia. 6" (152 mm) |
| 4513CP | Spice Dish. Dia. 4" (102 mm) |
| Not Illustrated | |

All the pieces in the JAMES YATES COLLECTORS range are individually hand-made by craftsmen. Variations in capacities and dimensions are, therefore, unavoidable.



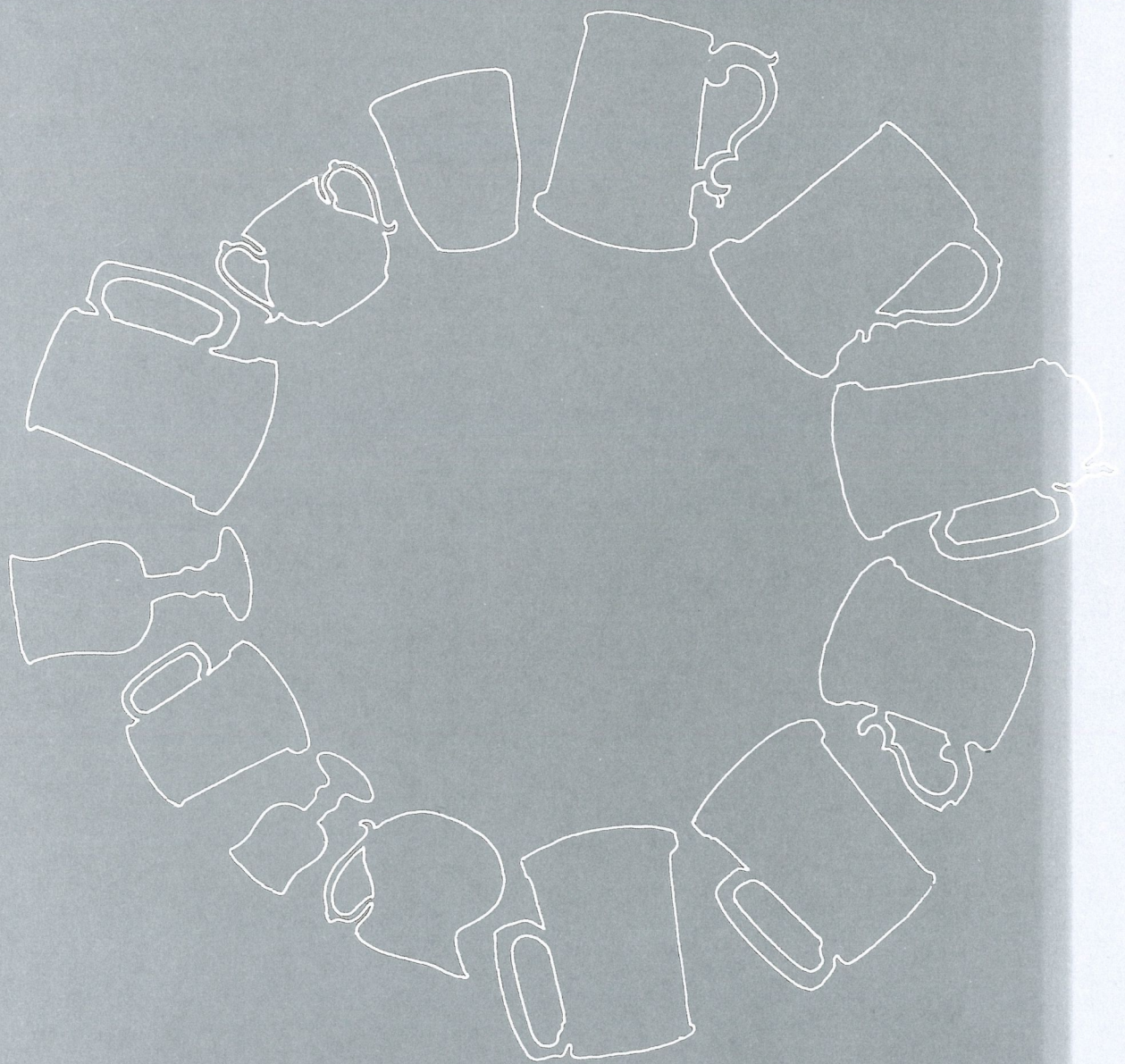
JAMES SMELLIE PEWTER

155, Warstone Lane, Birmingham B18 6NZ
ENGLAND

Telephones : 021-236 7933
021-236 6360

Proprietors: Edwin Taylor Stamping Works Ltd., Reg. Office: Pemberton Street, Birmingham B18 6NX Reg. No. 132365 (England)

Fine
English
Pewter



Fine English Pewter

The pewter described in this folder is hand-made by English craftsmen in a tradition of pewter-making going back over 200 years. Many of the pieces are reproductions of designs that have given pleasure to their owners from the 18th Century onwards, and the methods of manufacture used have been jealously guarded and passed on from craftsmen to apprentice for many generations.



Three traditional English tankards —

JG14 1-pint with plain sides

JG15 1/2-pint

JG16 1-pint with plain sides lined

JG17 1/2-pint

JG18 1-pint with hammered band decoration

JG19 1/2-pint

available with metal or glass bases



JG44 1-pint size Jacobean design tankard

JG62 1-pint size Georgian design tankard

JG84 1-pint size Regency design tankard



Lids are available for the following tankards:

JG14

JG16

JG18

Illustrated is a JG16 lidded tankard



JG104GB Ship 1-pint size has a ship medallion on each side.

JG105GB Tavern 1-pint size has a band running all round the body showing a merry tavern drinking scene.

These two tankards bear embossed designs in high relief.

Both designs are manufactured with glass-bases. Metal-bases are available to special order.



This illustration shows four items of the traditional pewterer's craft which are as popular in the U.S.A., as they are here —

- SM632 Georgetown Cup height 5¼" (13cm)
- SM618 Hampton Cup height 3½" (9.5cm)
- SM611 Jefferson Cup height 2¾" (7cm)
- SM715 Cordial Goblet height 3" (7.5cm)

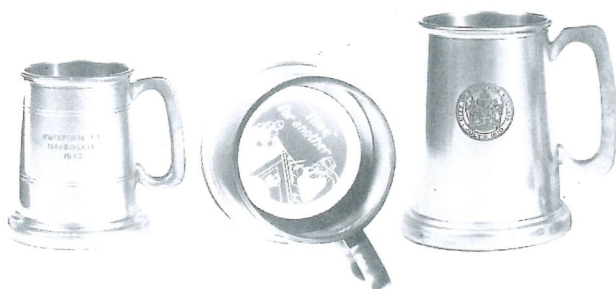


- SM811 Sugar
- SM812 Creamer



- Posy Bowl with glass flower holder insert:
- SM821 3" diameter (7.75cm)
 - SM823 4¼" diameter (10.75cm)

We have always specialized in manufacturing pewterware bearing special emblems, engravings, etc, and this illustration shows three of our specialities —



- JG17 ½-pint size tankard bearing an engraving for a company convention
- JG16GB 1-pint size tankard showing a glass-base with an indelibly printed design. Such glass-bases can be manufactured to order printed in one or more colours and are ideal for presenting an attractive yet discreet advertising message.
- JG14 1-pint size tankard bearing an etched crest.



Pewter goblets have always been a popular drinking vessel and this illustration shows some of the items in our range —

- 5581/3 3 oz size Georgian style goblet
- 5581/6 6 oz size Georgian style goblet
- 5581/10 10 oz size Georgian style goblet
- 4242/10 10 oz size Elizabethan style goblet



What is Pewter

Pewter is an alloy or mixture of metals consisting basically of a large proportion of tin mixed with other metals, for instance copper, antimony, bismuth and sometimes lead.

Through the years the exact mixture used has varied not only with fashion but also because certain products (for instance plates and chargers) were considered to require special alloys.

Nowadays our fine pewter consists of some 92% tin, the balance being copper and antimony. Our metal is, of course, lead-free.

Caring for Pewter

Pewter needs little attention. A periodic wash in water and a mild detergent followed by drying with a soft cloth will maintain the finish. If after long use some extra cleaning is felt necessary, any good metal polish may be used.

Never expose a pewter article to any form of intense heat, e.g. an electric cooker hot plate, flame of a gas cooker, etc.

Pewter is a hand-made article. All capacities and dimensions quoted are, therefore, necessarily approximate.

This folder presents only a part of our range of pewter. As a pewter factory we specialize in designing and manufacturing pieces specially reserved for particular customers. If you are interested in buying a range of pewter exclusive to yourselves please contact us and the services of our designers and craftsmen will be gladly put at your disposal for the creation of confidential private designs bearing (if required) your own name or trade-mark.



JAMES SMELLIE PEWTER
155 Warstone Lane
Birmingham B18 6NZ
England

Tel: 021-236 7933
021-236 6360



J A M E S S M E L L I E P E W T E R

155 Warstone Lane
Birmingham B18 6NZ, England

Telephone:
021-236 7933
021-236 6360

'JAMES YATES COLLECTORS PEWTER'

4011CP/BL 1-pt Tankard with Brass Rim £ 10.55

Designed c.1830. The brass rim not only looks attractive but prevented unscrupulous landlords beating down the top of the tankard to reduce its capacity.

4027CP/1 1-pt Tankard £ 8.40

Traditional bell-shaped English pewter Tavern Pot, designed c.1750. The style of the handle is traditionally known as 'broken'. For over 200 years this has been the most popular English Tavern Mug.

4027CP/P Teapot (1-quart capacity) £ 21.30

4027CP/J Cream Jug ($\frac{1}{2}$ -pint capacity) £ 7.70

4027CP/S Sugar ($\frac{1}{2}$ -pint capacity) £ 7.10

Teapot, Cream and Sugar, designed c.1750. Typical English Georgian style, once again having handles of 'broken' design.

4030CP - available in the following sizes:

2-pint measure	£ 15.50
1-pint measure	£ 9.20
1-gill ($\frac{1}{4}$ -pint) measure	£ 4.95

These Imperial Standard Measures, designed in typical English style are made in moulds dating (as far as can be established) back to 1824. This was the date on which, in England, old English wine measure (in which there were 16 fluid ounces to the pint) was abandoned in favour of 'Imperial' measure (20 fluid ounces to the pint). As a matter of interest, the United States (by then an independent country) have kept old English wine measure to this day - so the U.S. pint is approximately 16 fluid ounces today.

4120CP 8" Basin £ 10.65

Cast pewter basin, 8" dia, used for serving all manner of food. Made in a mould dating to c.1790.

4174CP Sir Walter Raleigh Tobacco Jar £ 27.20

The famous James Yates cast pewter Sir Walter Raleigh Tobacco Jar, made from unique hinged mould dated c.1800. Scene shows Sir Walter's servant throwing water over him, imagining his master to be on fire because of smoke coming from his mouth. Size 5 $\frac{1}{4}$ " x 4"x 5 $\frac{1}{2}$ " high.

4203CP - available in the following sizes:

4 $\frac{1}{2}$ " Plate	£ 2.40
6" Plate	£ 3.85
7 $\frac{1}{2}$ " Plate	£ 4.75
10 $\frac{3}{4}$ " Plate	£ 9.20

Dinner plates in all sizes (sometimes called 'Trenchers' - hence a 'Good Trencherman', the description of the 18th Century's enormous eaters) have always been a traditional form of pewterware. These straight-rimmed plates, incorporating the typical bead underneath the outer rim, are made to the design traditional c.1770/1780 onwards. In most cases the original moulds are used.

- 4216CP/A Caudle Cup bowl dia. $4\frac{1}{4}$ " £ 4.05
James Yates cast pewter Caudle Cup. Small bowl often used for serving caudle (warm spiced gruel) to babies. c.f. to mollycoddle. Designed c.1780. The handle of our example incorporates a shield, probably reflecting a common practice in the past of supplying a considerable number to a famous household.
- 4232CP 3-pint Elizabethan Ale Pitcher £ 26.00
James Yates cast pewter Pitcher or Flagon (3-pt capacity) Design dates from late 16th Century.
- 4242CP Goblet, 10 oz capacity £ 4.15
James Yates pewter barrell Goblet. Designed c.1650. Such goblets are traditionally seen in use in illustrations of banquets of the 17th Century onwards.
- 4308CP Pair of 18th Century Candlesticks. $4\frac{1}{2}$ " high £ 13.05 pr
Pair of $4\frac{1}{2}$ " pewter candlesticks, designed c.1780. The moulds for making the bottom halves were almost certainly also used for making a dish or porringer.
- 4311CP Pair of 9" Jacobean Candlesticks £ 17.50 pr
9" version of the familiar knopped (ball ornamented) candlesticks. Designed c.1780.
- 4314CP Pair of $4\frac{1}{4}$ " Jacobean Candlesticks. £ 11.35 pr
 $4\frac{1}{4}$ " version of the familiar knopped (ball ornamented) candlesticks. Designed c.1780.
- 4350CP Bleeding Bowl. 5" dia. £ 8.30
Not only were bowls such as this in cast pewter used for serving porridge, soup, gruel, etc, but they were also very popular for the treatment of the sick by blood-letting so familiar in past centuries. This particular bowl is reputed to have been used in large numbers by the surgeons in the early 19th Century British Army for the treatment of soldiers. Designed c.1820.
- 4355CP Barber's Bowl 5" dia. £ 11.25
The inscription on this Barber's Bowl 'Sir your Quarter is Up' makes it a unique piece of history. The young gentlemen of the early 18th Century paid their barbers once a quarter, and whilst for their daily shave a plain pewter bowl would be used, the barber kept ready on his shelf a bowl which tactfully advised the client that another quarter's payment was due. Nowadays these bowls are popularly used not for shaving but for serving sweet or savoury foods at parties. Designed c.1725.
- 5651CP - available in three sizes, as follows:
- | | |
|-----------------------|--------|
| 3 oz Georgian Goblet | £ 3.45 |
| 6 oz Georgian Goblet | £ 4.85 |
| 10 oz Georgian Goblet | £ 6.50 |
- Apart from pewter plates, the most common object seen on the table were goblets used for drinking any of the traditional English drinks, from mead (distilled honey) to sack (white wine) and ale. Offered here in the very popular c.1750 Georgian design in three sizes - 3 oz for sherry and liqueurs, 6 oz for wine, and 10 oz for longer drinks.

ALL PEWTER IS HAND-MADE,
HENCE ALL SIZES AND CAPACITIES ARE APPROXIMATE

FINE ENGLISH PEWTER

by

J A M E S S M E L L I E P E W T E R155 Warstone Lane
Birmingham B18 6NZ, EnglandTelephone:
021-236 7933
021-236 6360Tankards:

		<u>Metal base:</u>	<u>Glass base:</u>
JG.14	1-pt size, plain	£ 3.40	£ 3.60
JG.15	½-pt size, plain	£ 2.90	Not available
JG.16	1-pt size, plain with lines	£ 3.40	£ 3.60
JG.17	½-pt size, plain with lines	£ 2.90	Not available
JG.18	1-pt size, with lines & hammered band	£ 3.40	£ 3.60
JG.19	½-pt size, with lines & hammered band	£ 2.90	Not available
JG.44	1-pt size, 17th Century Design, plain with Scroll Handle	£ 4.40	" "
JG.62	1-pt size Georgian Tankard	£ 5.70	" "
JG.84	1-pt size Regency Tankard	£ 4.85	" "
JG.14/L	1-pt size, plain with lid	£ 6.20	£ 6.40
JG.16/L	1-pt size, plain with lines and lid	£ 6.20	£ 6.40
JG.18/L	1-pt size, with lines, hammered band & lid	£ 6.20	£ 6.40
JG.104.GB	1-pt size with Ship design and plain glass base	Not available	£ 5.05
JG.105.GB	1-pt size with Tavern design and plain glass base	Not available	£ 4.70

* * * * *

Miscellaneous:

2424/10	10 oz size Elizabethan style Goblet	£ 3.55
5581/3	3 oz Liqueur Goblet	£ 2.20
5581/6	6 oz Wine Goblet	£ 3.15
5581/10	10 oz Wine Goblet	£ 3.55
SM.611	Jefferson Cup	£ 2.00
SM.618	Hampton Cup	£ 1.80
SM.632	Georgetown Cup	£ 3.05
SM.715	Cordial Goblet	£ 1.55
SM.811	Sugar	£ 3.25
SM.812	Creamer	£ 3.55
SM.821	Small Posy Bowl with Flower glass block	£ 2.60
SM.823	Large Posy Bowl " " " "	£ 3.70

Engraving as required extra.SINCE OUR PEWTERWARE IS HAND-MADE
ALL CAPACITIES AND SIZES GIVEN ARE APPROXIMATE~~ALL PRICES PLUS VAT~~

PEPPERS, MUSTARDS, SALTS, AND EGG CUPS.

PEPPER BOXES.

Common Metal, No. 64, 9/- Larger, 69, 13/- No. 71, 11/- per doz.
 Hard ditto No. 151, 16/- No. 071, 14/6 ditto
 Hard ditto No. 147, 20/- No. 123, 27/- for Servants' Hall, ditto
 Hard ditto No. 214, 12/6 Common Metal, 9/6 ditto

MUSTARD POTS.

Hard Metal, No. 344, $\frac{1}{4}$ Pint, 18/- per doz.
 Ditto No. 355, $\frac{1}{4}$ Pint, 22/- with Blue Glass lining ditto
 Ditto No. 67, $\frac{1}{4}$ Pint, 17/- No. 68, $\frac{1}{2}$ Pint, 26/- ditto
 Ditto No. 122, Pint, 42/- for Servants' Hall ditto
 Ditto No. 65, $\frac{1}{4}$ Pint, 21/- No. 98, $\frac{1}{2}$ Pint, 36/- with Blue
 Glass lining, per doz.
 Ditto No. 129, 14/- Common Metal, No. 66, 10/-
 (loose lid) per doz.

SALT CELLARS.

Hard Metal, No. 361, 4 inch dia., 16/6 per doz.
 Ditto No. 57, 2 $\frac{1}{2}$ inch dia., 6/- No. 102, 3 inch dia., 9/- ditto
 Common ditto, No. 53, ditto 4/- No. 115, ditto 7/- ditto
 Hard Metal, No. 87, 3 inch dia., 11/6 No. 77, 2 $\frac{1}{2}$ inch dia., 10/- ditto
 Ditto No. 60, 2 $\frac{1}{2}$ inch dia., 7/6 Common Metal, No. 61, 5/6 ditto
 Ditto No. 117, 3 $\frac{1}{2}$ inch dia., 3 $\frac{1}{2}$ inch deep, for Servants' Hall,
 16/- per doz.
 Ditto No. 140, 3 inch dia., 12/- No. 141, 4 inch dia., 20/-
 (on tall foot), per doz.
 Ditto No. 74, 3 $\frac{1}{4}$ inch dia., 7/6 No. 149, 3 $\frac{1}{2}$ inch dia., 10/- per doz.
 Ditto No. 84, with Blue lining, 16/6 (size and pattern of No.
 102) per doz.

EGG CUPS.

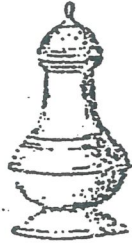
Hard Metal, No. 168, 6/- Common Metal, No. 165, 4/6 per doz.
 Ditto No. 136, on Plate, 16/6 ditto
 Ditto No. 62, 5/6 Common Metal, No. 63, 4/3 ditto

PEPPERS, MUSTARDS, SALTS & EGG-CUPS.

64. 69.



71.



131.



171.



544.



117.



117.



215.



67. 68. 122.



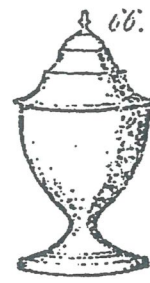
65. 98.



129.



66.



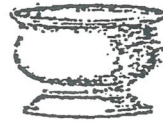
57. 102. 301.



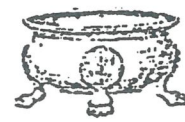
87.



60. 61.



77.



117.



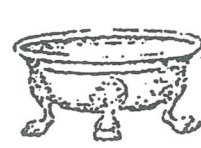
140. 141.



74.



149.



168.



136.



62. 63.



214.



IMPERIAL ALE MEASURES.

Nos. 1, 2, 3, 4, Hard Metal, $\frac{1}{2}$ Pint, 14/- $\frac{1}{2}$ Pint, 17/- Pint, 27/-
 Quart, 42/- per doz.

Nos. 2, 3, Hard Metal, with Spouts, 6/- per doz. extra

Nos. 1, 4, ditto ditto 8/- ditto

Nos. 1, 2, 3, 4, Hard Metal, with Covers, (as No. 8)

$\frac{1}{2}$ Pint, 28/- Pint, 41/- Quart, 66/- per doz.

Nos. 2, 3, 4, Common Metal, $\frac{1}{2}$ Pint, 13/- Pint, 19/- Quart, 32/- per doz.

Nos. 2, 3, Common Metal, with Spouts, 5/- per doz. extra

Nos. 1, 4, ditto ditto 7/- ditto

No. 6, Hard Metal (only) $\frac{1}{2}$ Pint, 19/- Pint, 29/- Quart, 45/- per doz.

No. 6, ditto with Covers, $\frac{1}{2}$ Pint, 31/- Pint, 44/- Quart, 70/- ditto

No. 6, Hard Metal, with Best Plate Glass Bottoms,

$\frac{1}{2}$ Pint, 30/- Pint, 45/- Quart, 64/- per doz.

No. 6, Hard Metal, with Covers and Best Plate Glass Bottoms,

$\frac{1}{2}$ Pint, 42/- Pint, 60/- Quart, 90/- per doz.

No. 7, Hard Metal, with Best Plate Glass Bottoms,

$\frac{1}{2}$ Pint, 27/- Pint, 42/- Quart, 60/- per doz.

No. 7, Hard Metal, with Metal Bottoms,

$\frac{1}{2}$ Pint, 19/- Pint, 30/- Quart, 46/- per doz.

No. 7, Hard Metal, with Best Plate Glass Bottoms, Stained and Cut,

$\frac{1}{2}$ Pint, 38/- Pint, 57/- Quart, 80/- per doz.

No. 8, Hard Metal, with Covers and Best Plate Glass Bottoms,

$\frac{1}{2}$ Pint, 38/- Pint, 56/- Quart, 84/- per doz.

No. 8, Hard Metal, with Covers & Best Plate Glass Bots., Stained & Cut.

$\frac{1}{2}$ Pint, 49/- Pint, 71/- Quart, 104/- per doz.

Nos. 1, 2, 3, 4, with Best Plate Glass Bottoms and Covers, same prices as Nos. 7 & 8.

ALE MEASURES WITH SHEET GLASS BOTTOMS.

No. 7, X Metal, $\frac{1}{2}$ Pint, 24/- Pint, 36/- Quart, 54/- per doz.

Nos. 1, 2, 3, 4, same price as No. 7.

SCOTCH MEASURES.—Pattern of No. 4.

Hard Metal, $\frac{1}{2}$ Pint, 19/- Pint, 29/- Quart, 45/- per doz.

Common ditto, $\frac{1}{2}$ Pint, 14/6 Pint, 21/- Quart, 34/6 ditto

2

ALE MEASURES.

N^o 1.



N^o 2.



N^o 2. with Spout.



N^o 3.



N^o 4.



N^o 6.



N^o 7. Glass Bottom.



N^o 8. Glass Bottom with Cover.



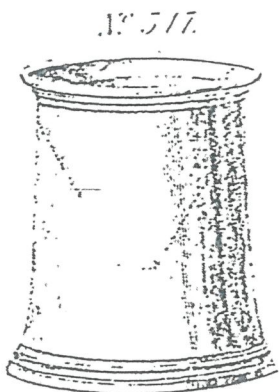
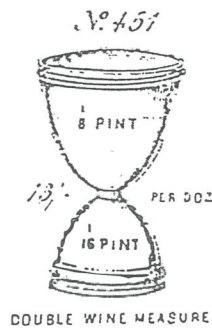
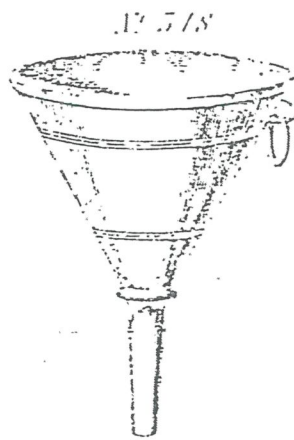
IMPERIAL WINE MEASURES.

- No. 5, Hard Metal, $\frac{1}{4}$ Gill, 10/- $\frac{1}{2}$ Pint, 11/- $\frac{1}{2}$ Gill, 12/- per doz.
 1 Gill, 16/- $\frac{1}{2}$ Pint, 20/- 1 Pint, 29/- 1 Quart, 44/- ditto
 Half Gallon, 10/- Gallon, 14/- each.
- No. 5, Common Metal, $\frac{1}{4}$ Gill, 9/- $\frac{1}{2}$ Gill, 10/- 1 Gill, 13/- per doz.
 $\frac{1}{2}$ Pint, 17/- 1 Pint, 27/- 1 Quart, 40/- ditto
 Half Gallon, 8/6 Gallon, 12/- each.
- No. 5, Hard Metal, with Covers, $\frac{1}{2}$ Gill, 20/- 1 Gill, 25/- per doz.
 $\frac{1}{2}$ Pint, 30/- 1 Pint, 48/- 1 Quart, 72/- ditto.
 Half Gallon, 13/- Gallon, 17/6 each.
- No. 5, Common Metal, with Covers, $\frac{1}{2}$ Gill, 16/- 1 Gill, 22/- per doz.
 $\frac{1}{2}$ Pint, 25/- 1 Pint, 40/- 1 Quart, 60/- ditto.
 Half Gallon, 11/- Gallon, 14/6 each.
- No. 5, Hard Metal, with Spout at Front, $\frac{1}{2}$ Pint, 2/9 1 Pint, 3/9 each,
 1 Quart, 5/6 Half Gallon, 12/6 Gallon, 17/- ditto
- No. 5, Hard Metal, with Cover and Spout at Front, $\frac{1}{2}$ Pint, 4/3 each.
 1 Pint, 5/6 1 Quart, 7/6 Half Gallon, 15/6 Gallon, 20/- ditto
- No. 101, Hard Metal, Copper Shape, $\frac{1}{2}$ Gill, 2/- 1 Gill, 2/6 each.
 $\frac{1}{2}$ Pint, 3/6 1 Pint, 5/6 1 Quart, 8/- Half Gallon, 13/6 Gallon, 21/-

FUNNELS.

- No. 348, Hard Metal, 2 Quarts, 11/- 3 Quarts, 13/- 4 Quarts, 20/- each
- No. 345, Hard Metal, Phial, 6/6 $\frac{1}{4}$ Pint, 12/6 $\frac{1}{2}$ Pint, 14/- per doz.
 $\frac{3}{4}$ Pint, 17/- Pint, 19/- $1\frac{1}{2}$ Pint, 22/- Quart, 27/- 3 Pint, 54/- do.
- No. 345, Common Metal, Phial, 5/- $\frac{1}{4}$ Pint, 9/- $\frac{1}{2}$ Pint, 10/- per doz.
 $\frac{3}{4}$ Pint, 12/- Pint, 14/- $1\frac{1}{2}$ Pint, 16/- Quart, 20/- 3 Pints, 42/- do.
- FUNNELS WITH STRAINERS, made in Hard Metal only,
- $\frac{1}{4}$ Pint, 19/- $\frac{1}{2}$ Pint, 21/6 $\frac{3}{4}$ Pint, 24/6 Pint, 27/- per doz.
 $1\frac{1}{2}$ Pint, 32/- Quart, 37/- 3 Pints, 65/- per doz.
- No. 128, Hard Metal WINE STRAINER, 45/- per doz.
- No. 347, Hard Metal FUNNEL STAND, with loose top, 4/- each.
- No. 180, Metal LIME JUICE MEASURES, 5/- per doz.
- No. 180, ditto, NEW REGULATION SIZE, 8/- per doz.

WINE MEASURES &c.



STRONG ALE MEASURES, &c.

Nos. 353, 356, 358, 362, Hard Metal.

$\frac{1}{2}$ Pint, 21/- Pint, 33/- Quart, 52/- per doz.

Ditto, with Spouts, 8/- per doz. extra.

Ditto, Common Metal, $\frac{1}{2}$ Pint, 16/- Pint, 26/- Quart, 39/- per doz.

Ditto, with Spouts, 7/- per doz. extra.

No. 357, Hard Metal with Brass Rims,

$\frac{1}{2}$ Pint, 36/- Pint, 48/- Quart, 66/- per doz.

No. 360, Hard Metal $\frac{1}{2}$ Pint, 22/- Pint, 34/- Quart, 54/- per doz.

No. 360, Hard Metal, with Best Plate Glass Bottoms,

$\frac{1}{2}$ Pint, 32/- Pint, 49/- Quart, 72/- per doz.

No. 360, Ditto, with Best Plate Glass Bottoms, Stained and Cut,

$\frac{1}{2}$ Pint, 43/- Pint, 64/- Quart, 92/- per doz.

No. 202, Hard Metal, $\frac{1}{2}$ Pint, 20/- Pint, 30/- Quart, 46/- per doz.

No. 202, Ditto, with Best Plate Glass Bottoms,

$\frac{1}{2}$ Pint, 30/- Pint, 45/- Quart, 64/- per doz.

No. 202, Ditto, with Best Plate Glass Bottoms, Stained and Cut,

$\frac{1}{2}$ Pint, 41/- Pint, 60/- Quart, 84/- per doz.

CAIRO PATTERN.

No. 297 Hard Metal, $\frac{1}{2}$ Pint, 21/- Pint, 33/- Quart, 53/- per doz.

No. 297, Hard Metal, with Best Plate Glass Bottoms,

$\frac{1}{2}$ Pint, 31/- Pint, 48/- Quart, 71/- per doz.

No. 297, Hard Metal, with Best Plate Glass Bottoms, Stained and Cut,

$\frac{1}{2}$ Pint, 42/- Pint, 63/- Quart, 91/- per doz.

N.B.—Hard Metal Ale Measures, if with Covers,

$\frac{1}{2}$ Pint, 11/- Pint, 14/- Quart, 24/- per doz. extra.

STRONG ALE MEASURES.

N^o 353.



N^o 356.



N^o 357 Brass Rims.



N^o 358.



N^o 360.



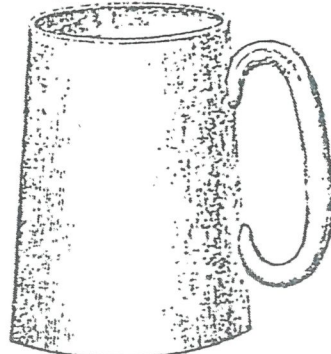
N^o 362.



N^o 202



Cairo
N^o 297



DRINKING CUPS.

No. 103, Hard Metal, $\frac{1}{2}$ Pint, 18/6 $\frac{3}{4}$ Pint, 28/- Pint, 29/- per doz.

Ditto, with Two Handles, $\frac{1}{2}$ Pint, 23/- $\frac{3}{4}$ Pint, 34/- Pint, 35/- ditto

No. 263, Hard Metal, $\frac{1}{2}$ Pint, 21/- $\frac{3}{4}$ Pint, 31/- Pint, 32/- ditto

Ditto with Two Handles, $\frac{1}{2}$ Pint, 26/6 $\frac{3}{4}$ Pint, 37/6 Pint, 38/6 ditto.

No. 319, Hard Metal $\frac{1}{2}$ Pint, 26/- Pint, 39/- Quart, 63/- ditto

Hard Metal Cup, same pattern as No. 319, $\frac{1}{3}$ Quart, No. 311 36/- ditto

No. 323, Hard Metal, $\frac{1}{2}$ Pint, 26/- $\frac{1}{3}$ Quart, 36/- Pint, 39/- ditto

No. 318, Hard Metal Cup, with Two Handles,
 $\frac{1}{2}$ Pint, 23/- Pint, 35/- per doz.

No. 317, Hard Metal Parlour Cup, $\frac{1}{3}$ Quart, 36/- per doz.

No. 352, Hard Metal, $\frac{1}{2}$ Pint, 20/- Pint, 30/- Quart, 48/- ditto

Ditto with Covers, $\frac{1}{2}$ Pint, 31/- Pint, 44/- Quart, 72/- ditto

Ditto with Best Plate Glass Bottoms, $\frac{1}{2}$ Pint, 30/- Pint, 45/-
Quart, 66/- per doz.

No. 352, Hard Metal with Covers, and Best, Plate Glass Bottoms,
 $\frac{1}{2}$ Pint, 41/- Pint, 59/- Quart, 90/- per doz.

No. 349, SHEFFIELD PATTERN CUP, EXTRA FINISH.

No. 349, Hard Metal with Covers, Metal Bottoms,
 $\frac{1}{2}$ Pint, 38/- Pint, 51/- Quart, 86/- per doz.

No. 349, Hard Metal without Covers, Metal Bottoms,
 $\frac{1}{2}$ Pint, 24/- Pint, 33/- Quart, 60/- per doz.

No. 349, Hard Metal with Covers, and Best Plate Glass Bottoms,
 $\frac{1}{2}$ Pint, 48/- Pint, 66/- Quart, 102/- per doz.

No. 349, Hard Metal without Covers, Best Plate Glass Bottoms,
 $\frac{1}{2}$ Pint, 34/- Pint, 48/- Quart, 78/- per doz.

No. 349, with Best Plate Glass Bottoms, Stained and Star Cut,
 $\frac{1}{2}$ Pint, 11/- Pint, 15/- Quart, 20/- per doz. extra.

DRINKING CUPS.

N^o 103.



N^o 263.



N^o 319



N^o 323



N^o 318



N^o 317



N^o 349

with Cover.



N^o 352.



CHILDREN'S CUPS, TUMBLERS, &c.

- No. 142, Child's Cup, $\frac{1}{4}$ Pint, 14/- No. 132, $\frac{1}{3}$ Pint, 15/6 per doz.
 No. 116, ditto $\frac{1}{4}$ Pint, 14/- No. 133, $\frac{1}{3}$ Pint, 15/6 ditto
 No. 218, Child's Cup, $\frac{1}{4}$ Pint, 14/- $\frac{1}{3}$ Quart, 17/- per doz.
 No. 363, Tumbler, $\frac{1}{2}$ Pint, 16/6 $\frac{3}{4}$ Pint, 23/- Pint, 26/- per doz.
 No. 363, Ditto, with Best Plate Glass Bottom,
 $\frac{1}{2}$ Pint, 26/- $\frac{3}{4}$ Pint, 35/- Pint, 40/- per doz.
 No. 363, Tumbler, with Stained and Star Cut Glass Bottom,
 $\frac{1}{2}$ Pint, 36/- $\frac{3}{4}$ Pint, 50/- Pint, 54/- per doz.
 No. 435 and 404, Tumbler, $\frac{1}{2}$ Pint, 15/- $\frac{3}{4}$ Pint, 21/- Pint, 23/- per doz.
 No. 292, Tumbler, $\frac{1}{4}$ Pint, 11/- $\frac{1}{3}$ Pint, 14/- $\frac{1}{2}$ Pint, 15/- ditto
 No. 266, Goblet, $\frac{1}{3}$ Quart, 22/- $\frac{1}{3}$ Quart, 30/- $\frac{3}{4}$ Pint, 32/- ditto
 No. 407, Cup $\frac{1}{2}$ Pint, 17/- Pint, 27/- ditto
-

COMMUNION SERVICE.

- No. 364, Flagon, 2 Pints, 9/- 3 Pints, 19/- 4 Pints, 24/- 5 Pints, 28/- ea.
 No. 380, Cup, with Two Handles, $\frac{1}{2}$ Pint, 3/- Pint, 4/3 ditto
 No. 380, Ditto, without Handles, $\frac{1}{2}$ Pint, 2/3 Pint, 3/3 ditto
 No. 369, Cup, without Handles, $\frac{1}{2}$ Pint, 3/9 Pint, 5/- ditto
 No. 369, Ditto, with Two Handles, $\frac{1}{2}$ Pint, 4/6 Pint, 6/- ditto
 No. 367, Salver, 9 $\frac{1}{4}$ in. dia., 6/- 10 $\frac{1}{4}$ in. dia., 8/- each.
 No. 382, Plate, 9 $\frac{1}{4}$ in. dia., 2/9 10 $\frac{1}{4}$ in. dia., 4/3 ditto

CHILDRENS CUPS, TUMBLERS &c.

112. 132.



116. 133.



218.



303.



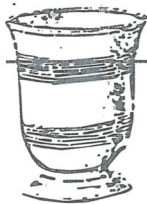
135.



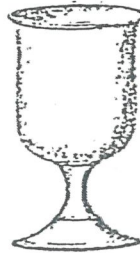
299.



404



266.



407



369



COMMUNION SERVICE.

380



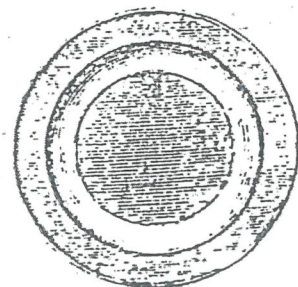
364



367



382



BED PANS, CHAMBER POTS, &c., &c.

BED PANS.

No. 343, Bed Pan, Small, 7/6 Middle, 9/- Large, 11/- each.
Hard Metal ditto, with Rim, to hold Hot Water, middle size, 18/-
Hard Metal Hot Water Warming Pan,—12in., without Wood Handle,
13/- each.
Wood Handle for ditto, 2/- each.

NIGHT STOOL PANS.

No. 345, Small 7½in. dia. ins., Middle 7¾in. dia. ins., Large 8¾in. dia.
ins., 1/9 per lb.
Child's Chair Pan, 29/- per Doz.

CHAMBER POTS.

No. 390, Hard Metal—Small 6½in., 4/9 Middle 7¼in., 5/3 Large Sin.,
6/3 each.
Hard Metal, extra large, 9½in., 10/- each.
No. 392, Common Metal—Small, 6½in., 4/- Middle, 7¼in., 4/6 Large Sin.,
4/9 each.
Common Metal, extra large, 9½in., 8/- each.
Hard Metal, with covers—Small, 7/6 Middle, 8/6 Large, 10/- each.

SPITTING CUP AND URINAL.

No. 384, Metal Spitting Cup, 4in. dia. × 3in. deep, 34/- per Doz.
No. 114, Ditto Urinal, Pint, 39/- 1½ Pint, 48/-
Hard Metal ditto, Pint, 45/- 1½ Pint, 54/-

BLEEDING BASINS.

No. 385, Hard Metal, 32 oz., 6½in. dia. × 3in. deep, 4/6 each.
No. 381, Hard Metal, 24 oz., 5in. dia., 3/6 each.
No. 387, Hard Metal.
4oz., 3½in. × 1in. deep, 1/6 8oz., 4½in. × 1¾in. deep, 2/- 16oz. 5½in. × 1¾in.
deep, 2/9 each.
No. 387, Common Metal, 4oz., 1/3 8oz., 1/8 16oz. 2/3 each.

HOT WATER BOTTLES.

No. 386, Hard Metal Hot Water Bottle, or Foot Warmer, 9in. × 4in.,
13/6 13in. × 5in., 17/- each.

INHALING POTS, &c.

No. 363, Hard Metal, with Elastic Pipe, ½ Pint, 7/6 Pint, 9/- Quart,
12/- each.
Ditto without Pipe, ½ Pint, 4/- Pint, 5/6 Quart, 8/6 each.
No. 379, Throat Steamer, with Bone Mouth Piece, 2/6 each.
No. 353, Medicine Measures, 1 oz. & ½oz., 5/- 2 oz. & 1 oz., 10/- per Doz.

FUNNELS.

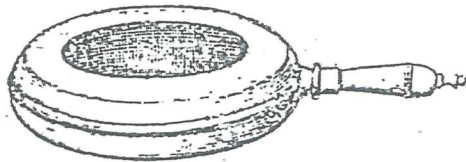
No. 366, Hard Metal, ½ Pint, 3in. dia., 15/- Pints, 3½in. dia., 20/- per Doz.
Ditto, with Strainer, ditto, 24/- ditto, 30/-

BED PANS, CHAMBER POTS &c

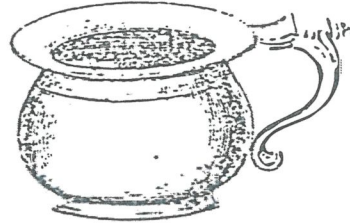
N^o 545



N^o 545



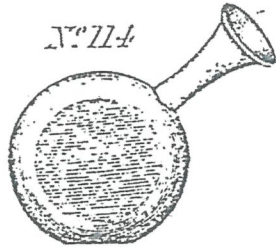
N^o 590



N^o 584



N^o 774



N^o 585



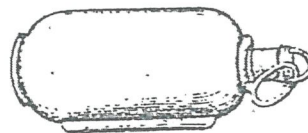
N^o 587



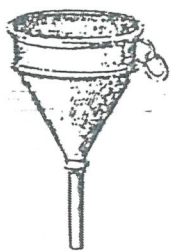
N^o 581



N^o 586



N^o 560



N^o 563



N^o 579

N^o 583

