

6755

Gregory Somers and Pewterware in 2013

Gregory Somers continues the family work of his father in making pewter on his own account long after his father retired.

Today he also brings to that his own character and ideas.

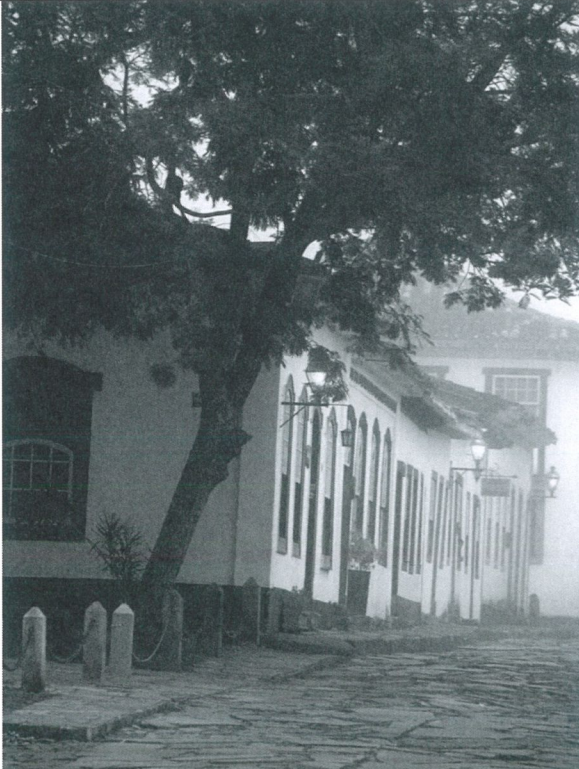
Gregory has developed a long way beyond the thoughts of the fine reproduction old British Pewter of past years into design for the 21st century.

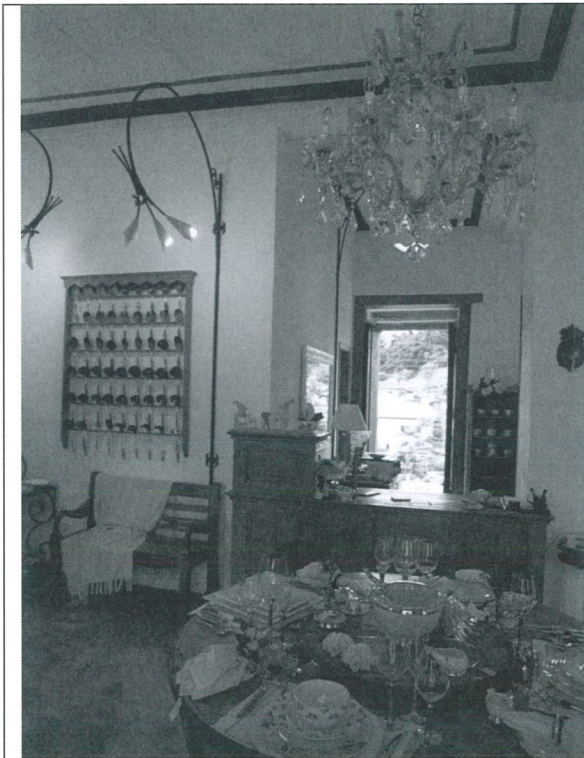
Gregory's principles in this are the highest quality of design and the best quality of workmanship and metal.

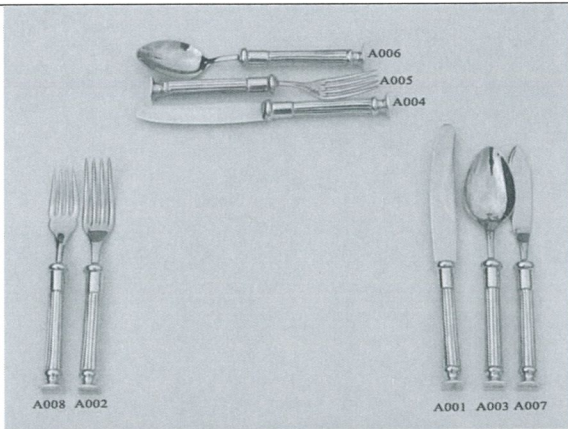
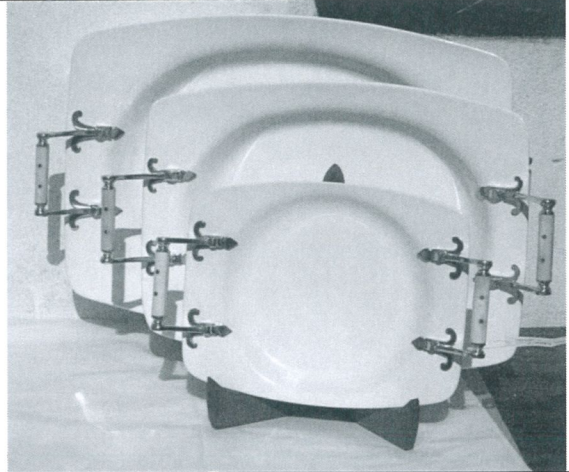
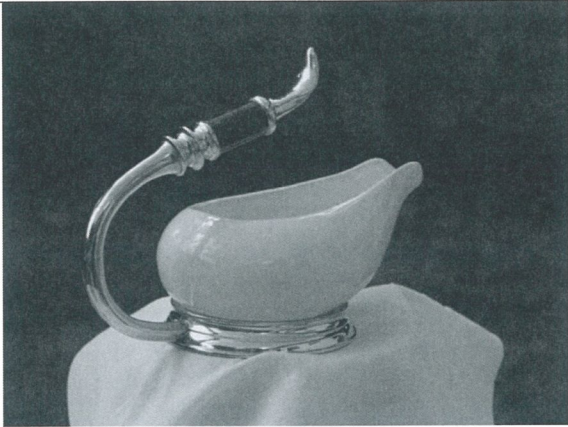
So he in his generation moves on into different areas for a different market of discerning 21st century customers.

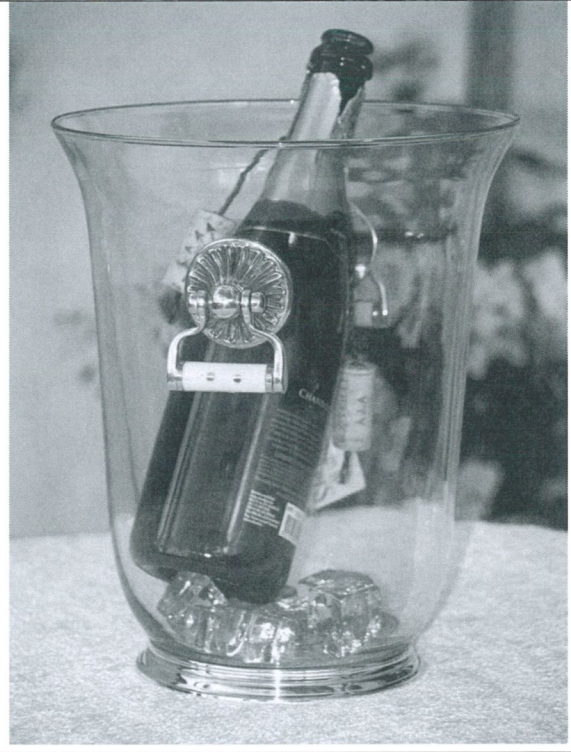
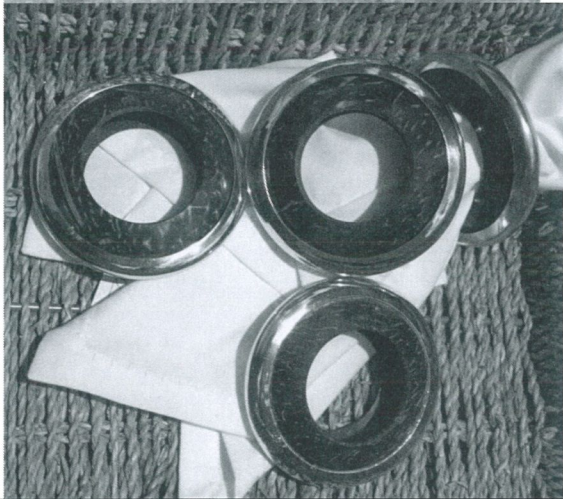
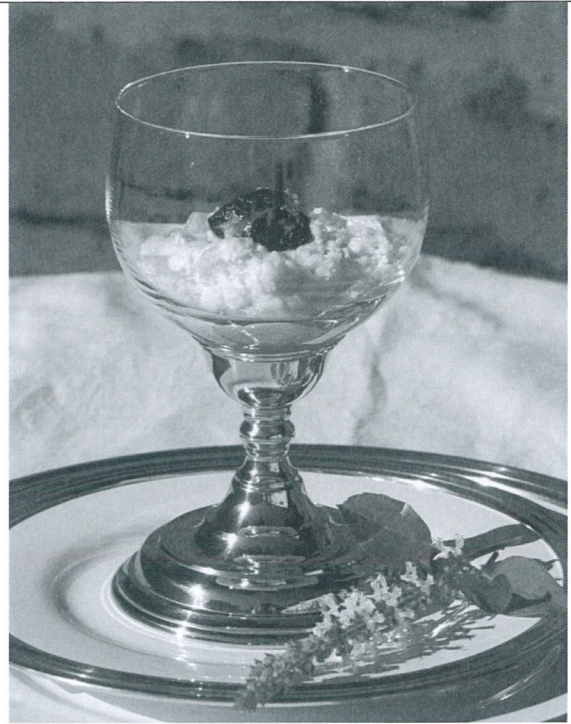
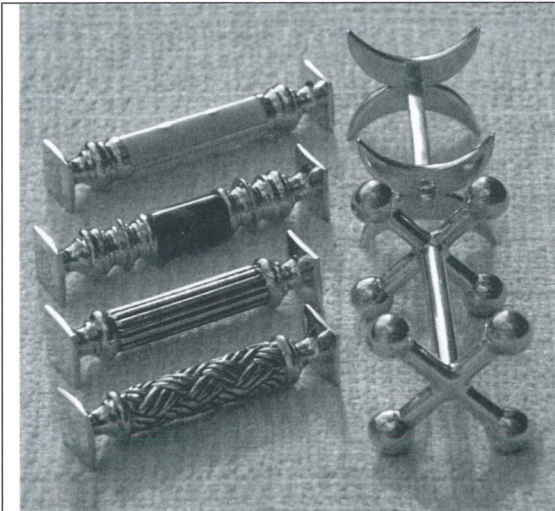
Gregory sends this website some photographs showing products he has produced and some he is producing and also some photographs of a retail outlet of his today in San Joao del Rei, Minas Gerais, Brazil - which is featured firstly below - and finally marks used on his pewterware and design.

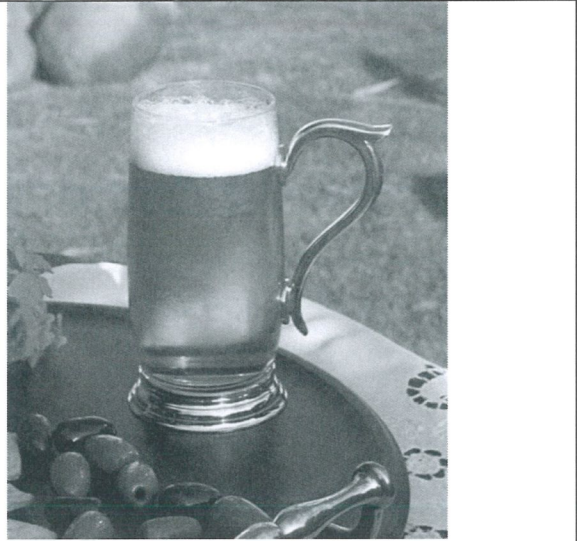
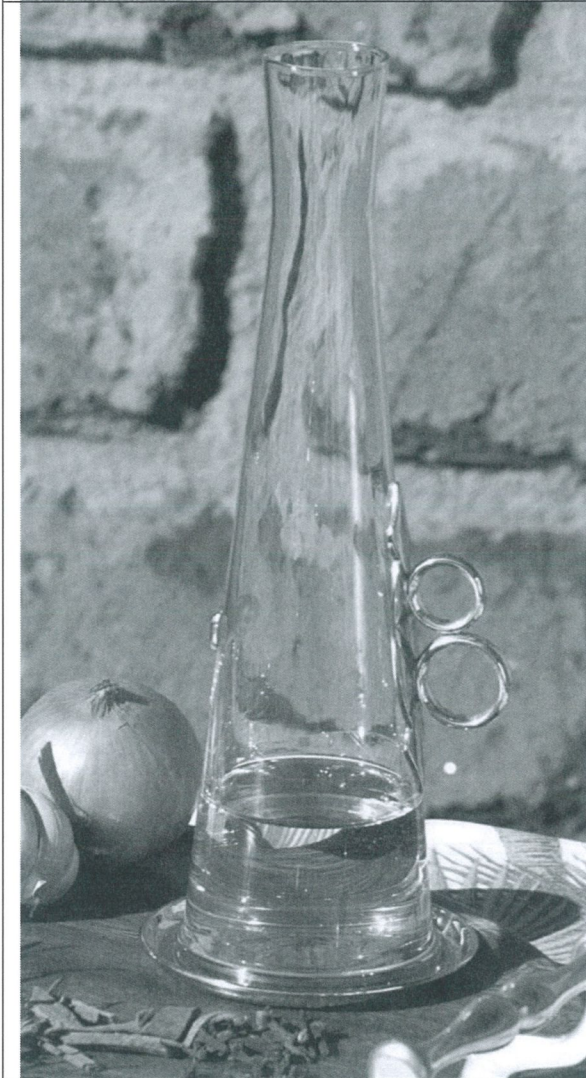
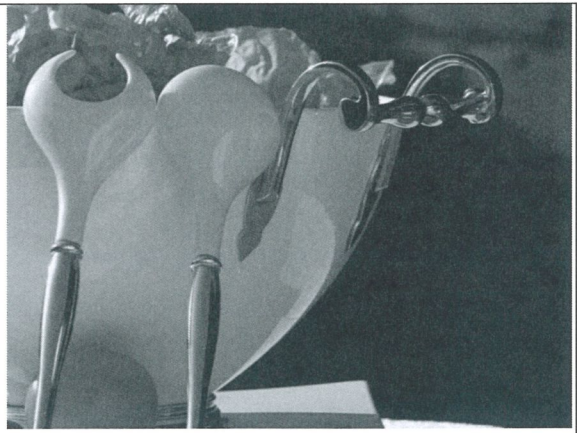
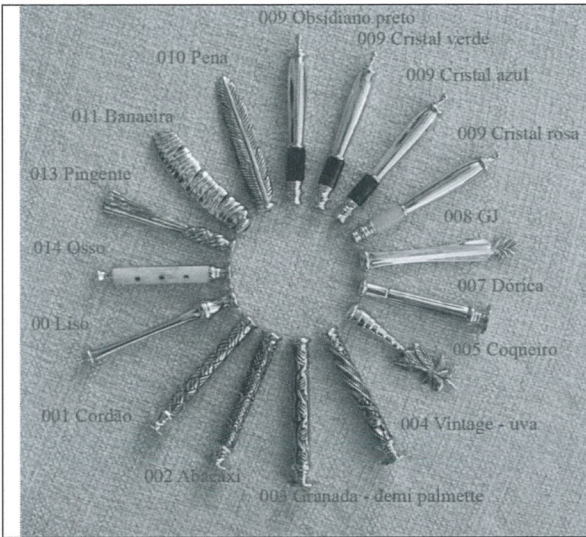
The design work alone is sufficient justification for a visit!

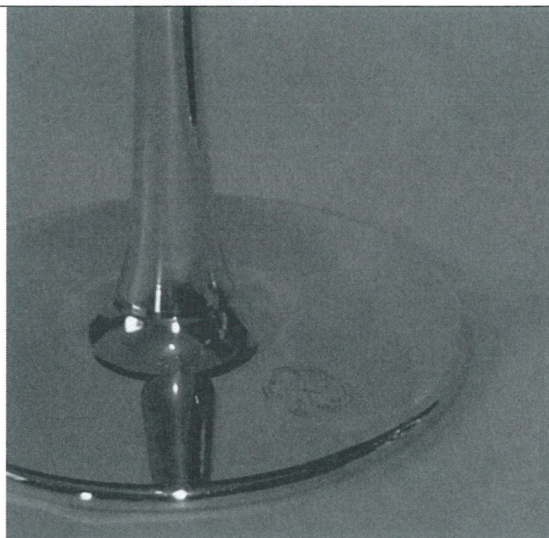
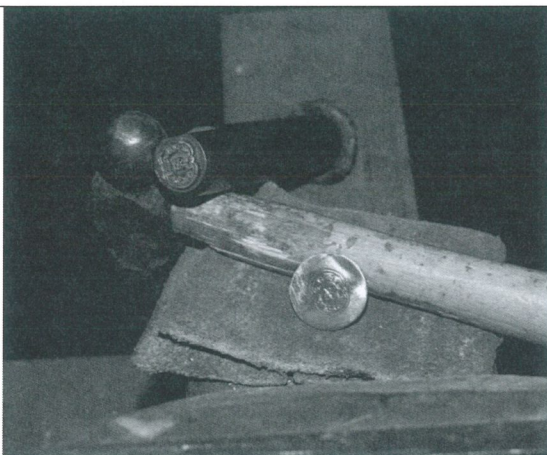
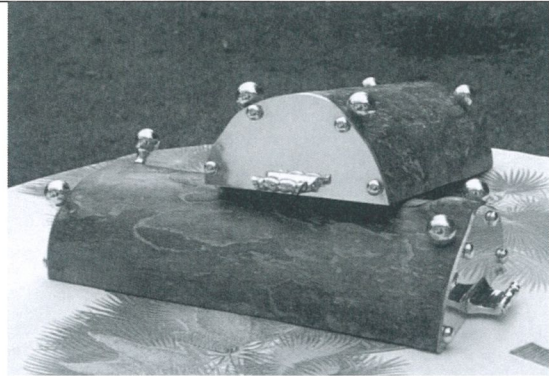
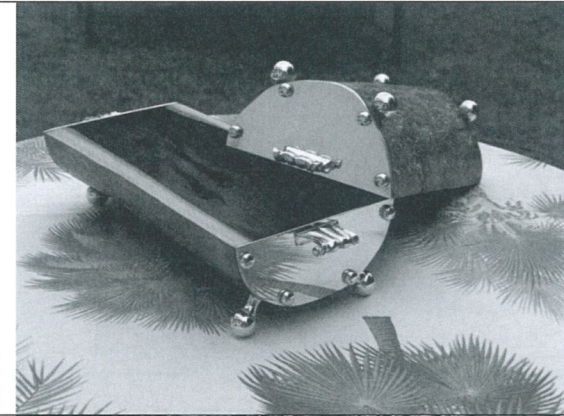












Punch and next photo...punch applied.....



Design by
Somers

