

6754

*When  
Ordering Goods  
Please give  
NUMBER of Article  
in Catalogue.*

*Keep the Book handy for Reference.*

*Enquiries for Cabinet, Box  
Fillings, Counters, Seating  
etc. should be accompanied  
with plans and particulars.*

CATALOGUE No. 60.

1921.

Gaskell & Chambers 1921

London Show Rooms:  
113, 114 & 115, BLACKFRIARS ROAD, S.E.

Telegrams:  
"GASKELLS,  
BIRMINGHAM."

Telephone:  
CENTRAL  
4336, 4337.



# Gaskell & Chambers Limited

(Incorporated with YATES & GREENWAYS),

Manufacturers of GOLD MEDAL

## BEER ENGINES

COUNTERS · CABINETS · SEATING  
HIGH-CLASS JOINERY · BAR & CELLAR FITTINGS

Patentees and Sole Makers of

The "OPTIC" Measuring Taps

"MERRITT" · "DON" · "SAFETY"

AND OTHER PATTERN

## CORK DRAWERS

URNS AND MULLERS

In MANDAL SILVER and other Metals

Pewter Goods

Corking and Bottling Machines

Lager Beer Machinery

Hotel and Bar-Requisites

DALE END WORKS,

48, 49, 50, 51 & 52,  
DALE END,

# BIRMINGHAM

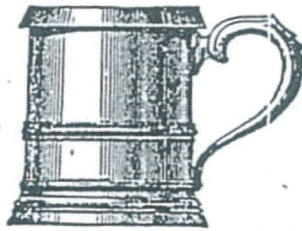
LONDON · PORTSMOUTH · LEEDS · CARDIFF



Pewter Ale and Spirit Measures, &c.



No. 4011.  
Best Pewter 1 1/2 2 pint.  
3/- 4/- 6/- 9/- each.



No. 4012.—With Brass Rim.  
Best Pewter 1 1/2 2 pint.  
9/6 11/6 15/- each.



No. 4013.—With Spout.  
Best Pewter 1 1/2 2 pint.  
5/6 7/6 10/6 each.

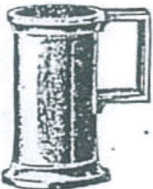


No. 4030.—Best Hard Pewter Wine or Spirit Measure.  
1/6 1/3 1/2 2 pint.  
2/6 3/- 3/6 4/6 6/6 9/6 each.  
1/2 gal., 25/-; 1-gal., 35/ each.  
Accommodation sizes:  
2/9 2/9 2/9 2/9 3/- 3/3 each.

The Imperial sizes of Best Hard Pewter Measures are made in accordance with the New Regulations of the Board of Trade, and are supplied Government Stamped. Accommodation sizes are not Government Stamped.



No. 4064.—Best Pewter, with Brass Rims.  
1/6 1/3 1/2 1 2 pints.  
4/6 5/6 6/6 9/6 12/6 16/- ea.



No. 4033.  
Pewter Litre Measure.  
Prices on application.



No. 4035.—Best Hard Pewter Funnel.  
2/- 2/6 3/- 3/6 4/3 5/- 6/- 10/- each.



No. 4040.  
Wine Strainer.  
Best Hard Pewter.  
9/- each.

No. 4038.—With Strainer.  
2/6 3/- 3/6 4/- 4/6 6/- 7/- 11/6 each.

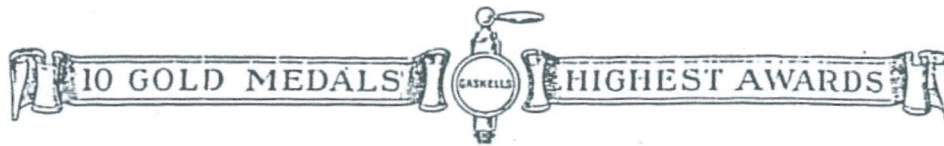


No. 4031.—Thimble Pattern Spirit Measure.  
Best Hard Pewter... 2/6 3/6 4/6 each.  
Accommodation Sizes:  
1/6 1/3 1/2 2/3 3/4 pint.  
2/6 2/6 2/6 3/- 3/- each.



No. 4032.—Irish Pattern Spirit Measure.  
Pewter ... 2/- 2/6 3/6 5/3 each.

115 mm.  
all other pps in pro.



## Best Pewter Ale Tankards



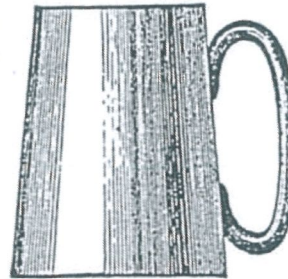
No. 4018.

Best Hard-metal Pewter Tankards.

Quart ... ..	9/6 each.
Pint ... ..	6/6 "
½-pint ... ..	4/9 "

If with Glass Bottoms:—

½-pint, 7/6; pint, 10/-; quart, 14/- each.



No. 4019.

Best Hard-metal Pewter Tankards.

Quart ... ..	9/6 each.
Pint ... ..	6/6 "
½-pint ... ..	4/9 "

If with Glass Bottoms:—

½-pint, 7/6; pint, 10/-; quart, 14/- each.



No. 4020.

Best Hard-metal Pewter Tankards.

Quart ... ..	10/6 each.
Pint ... ..	7/- "
½-pint ... ..	5/- "



No. 4021.

Best Hard-metal Pewter Tankards.

Quart ... ..	11/- each.
Pint ... ..	7/6 "
½-pint ... ..	5/6 "

If with Glass Bottoms:—

½-pint, 7/6; pint, 10/-; quart, 14/- each.



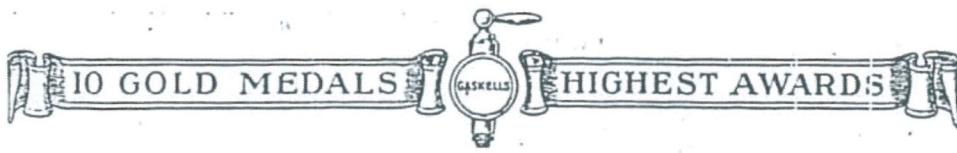
No. 4028.—Best Parlour Pots.  
Best Hard-metal Pewter.

Quart ... ..	11/- each.
Pint ... ..	7/6 "
½-pint ... ..	5/6 "



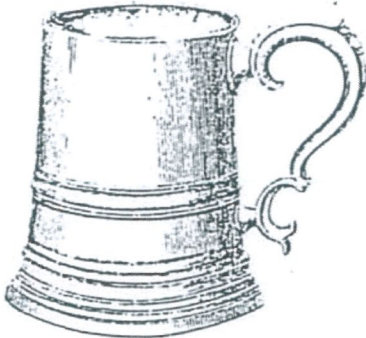
No. 4027.—Best Parlour Pots.  
Best Hard-metal Pewter.

Quart ... ..	11/- each.
Pint ... ..	7/6 "
½-pint ... ..	5/6 "

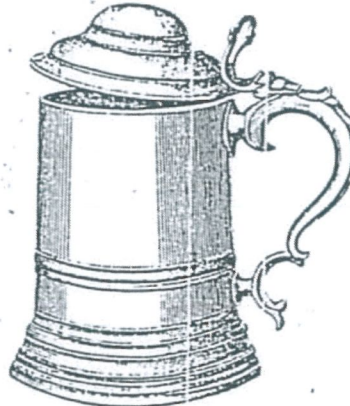


## Pewter Prize Cups

For Public  
School Sports,  
Tennis and  
Golf Clubs,  
&c.



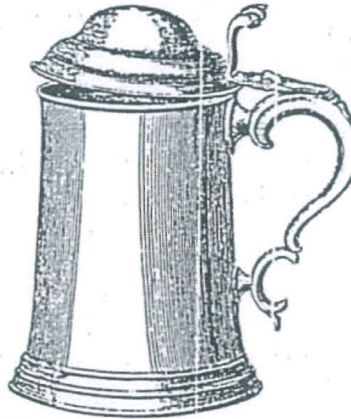
No. 4070.—Best Hard Pewter.  
With Metal Bottom.  
pt., 57/-; 1-pt., 78/-; 2-pt., 114/- per doz.  
If with Plate-glass Bottom.  
pt., 90/-; 1-pt., 120/-; 2-pt., 168/- ..



No. 4071.—Best Hard Pewter.  
With Cover and Metal Bottom.  
½-pt., 7/6; 1-pt., 10/6; 2-pt., 14/- each.  
If with Plate-glass Bottom.  
½-pt., 10/6; 1-pt., 14/-; 2-pt., 17/6 ..



No. 4072 H.      Pint.      Quart.  
with Glass Bottom      10/-      14/- each.  
   12/6      17/6 ..



No. 4073.      ½      1      2-pint.  
If with Glass Bottom      8/6      12/-      16/6 each.  
   11/-      15/-      20/- ..

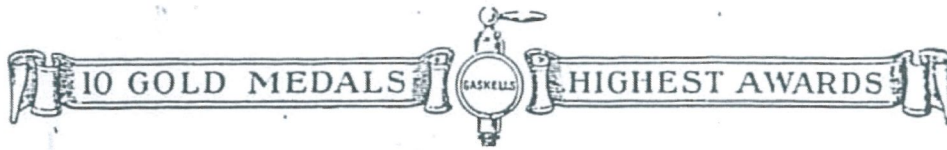


No. 4074.—Best Hard Pewter.  
pt., 4/6; 1-pt., 6/6; 2-pt., 10/- each.

Cups engraved  
with Crests,  
Monograms, etc.,  
in best style,  
at lowest prices.



No. 4014.—Best Hard Pewter.  
½-pt., 4/-; 1-pt., 6/-; 2-pt., 9/- each.



Pewter Salt Cellars, Plates, &c.



No. 4075.  
Best Hard Pewter.  
2½ 3 4in. diameter.  
20/- 30/- 40/- per doz.  
No. 4076.  
Common Pewter.  
16/- 25/- 35/- per dozen.



No. 4091.  
Best Hard Pewter.  
2½in diameter.  
24/- per dozen.



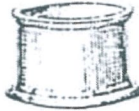
No. 4095.  
Best Hard Pewter.  
3½in. diameter.  
30/- per dozen.



No. 4097.—Soup Plate.  
9½in., about 13lb. to the dozen.  
9½in. " 15lb. "  
Prices on application.



No. 4077.  
Best Hard Pewter.  
3in. diameter.  
30/- per dozen.



No. 4090.  
Best Hard Pewter.  
With Blue Glass Lining.  
3in. diameter.  
42/- per dozen.



No. 4094.  
Best Hard Pewter,  
for Servants' Hall.  
3½in. diameter, 2½in. deep.  
47/- per dozen.



Communion Cup.  
1-pint.  
No. 4099 10/6 15/- each.  
With Two Handles.  
No. 4100 12/6 18/- each.



No. 4088.  
Best Hard Pewter.  
2½in. diameter.  
24/- per dozen.

No. 4089.  
Common Pewter.  
18/- per dozen.



Best Hard Pewter.  
3in. diameter.  
No. 4092.—36/- per dozen.  
4in. diameter.  
No. 4093.—60/- per dozen.

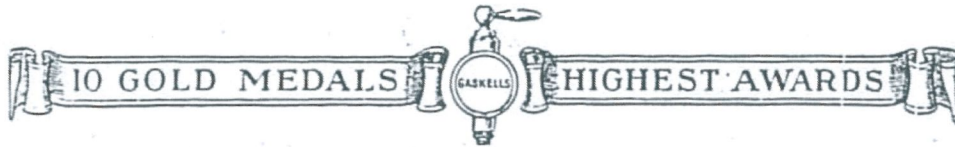


No. 4096.  
Best Hard Pewter,  
3½in. diameter.  
36/- per dozen.



No. 4098.—Dinner Plates.  
Weight about—  
7½ 8 8½ 9½ 10in. dia.  
lb. lb. lb. lb. lb. lb.  
8 9 11 13 15 17 per doz  
Prices on application.

Communion Services to special order.



## Pewter Pepper Boxes



No. 4101.  
Best Hard Pewter.  
50/- per dozen.



No. 4102.  
Best Hard Pewter.  
30/- per dozen.  
Common Pewter.  
24/- per dozen.



No. 4103.  
Pewter.  
35/- per dozen.



No. 4104.  
Best Hard Pewter.  
Large Size, for Servants' Hall.  
60/- per dozen.



No. 4105.  
Best Hard Pewter.  
40/- per dozen.



No. 4106.  
Best Hard Pewter.  
36/- per dozen.



No. 4107.  
Common Pewter.  
25/- per dozen.  
No. 4108.—Large size  
40/- per dozen.

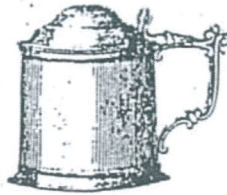


No. 4109.  
Common Pewter.  
28/- per dozen.

## Mustard Pots



No. 4110.  
Best Hard Pewter.  
½-pint ... 48/- per dozen.



No. 4111. Best Hard Pewter,  
with Blue Glass Lining.  
60/- per dozen.



No. 4113. Best Hard Pewter.  
½-pint ... 50/- per dozen.  
" " ... 80/- " "  
For Servants' Hall.  
1-pint ... 110/- per dozen.



No. 4114. Best Hard Pewter,  
with Blue Glass Lining.  
½-pint ... 60/- per dozen.  
" " ... 80/- " "

No. 4112.  
Ditto, without Glass Lining.  
40/- per dozen.

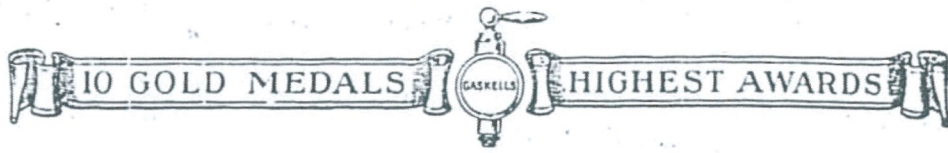


No. 4115.  
Best Hard Pewter.  
36/- per dozen.



No. 4116.  
Common Pewter Mustard  
Pot, with Louse Lid.  
24/- per dozen.





Pewter Jugs, Basins, &c.



No. 4117.—Best Hard Pewter, with Cover:  
 $\frac{1}{4}$  1 2 3 4 5 6 8-pint.  
 10/- 15/- 20/- 25/- 30/- 35/- 40/- 50/- each.  
 Without Cover.  
 $\frac{1}{4}$  1 2 3 4 5 6 8-pint.  
 7/6 12/- 15/- 20/- 25/- 30/- 35/- 42/6 each.



No. 4118.—African Jug.  
 Best Hard Pewter ... .. 35/- each.  
 Common " ... .. 25/- "



No. 4120.—Pewter Basins.  
 7 8 9 10 11 11 $\frac{1}{2}$  12 13 14in.  
 Best Hard Metal Middle Quality.  
 Common Quality.  
 To Special Quotation.



No. 4119.—African Jug.  
 With Two Handles.  
 Best Hard Pewter ... .. 40/- each.  
 Common " ... .. 30/- "



No. 4121.—Dutch Teapot.  
 Best Hard Pewter with Red Knob.  
 $\frac{1}{2}$  1 1 $\frac{1}{2}$ -pint quart 3-pint  
 To Special Quotation.



No. 4122.—Stew Pot.  
 Best Hard Pewter.  
 Prices on application.



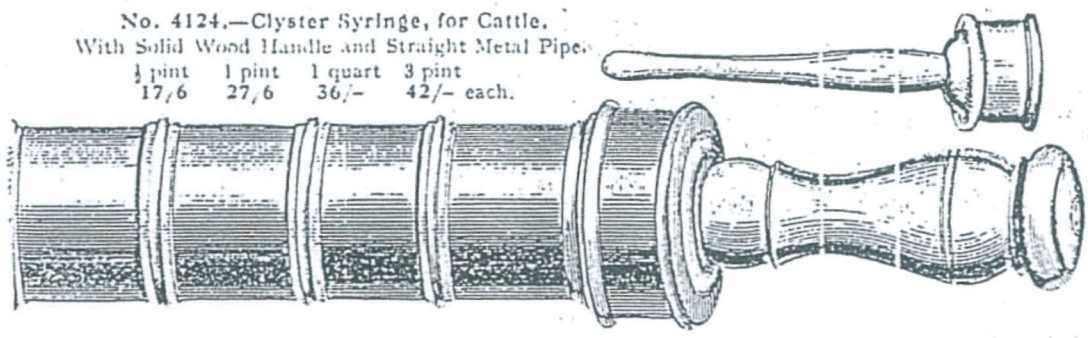
No. 4123. African Mug.  
 Common Pewter.  
 Prices on application.



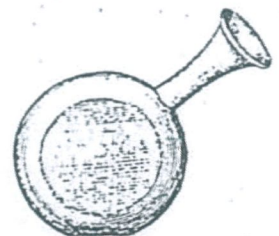
## Pewter Syringes, &c.

No. 4124.—Clyster Syringe, for Cattle.  
With Solid Wood Handle and Straight Metal Pipe.

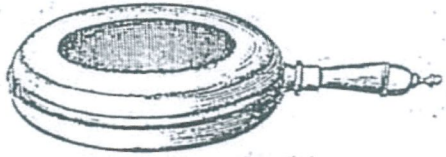
1/2 pint	1 pint	1 quart	3 pint
17/6	27/6	36/-	42/- each.



No. 4125.—Ear Syringe.  
3in. long 7/6; 3 1/2 in. 8/6; 4in. 10/6 per dozen.  
5in. 14/-; 7in. 28/-; 8in., 42/- per dozen.



No. 4126.  
Pewter Male Urinal.  
1 13/-  
1 1/2 pint. 15/- each.  
Female Urinal same prices.



No. 4127.—Round Bed Pan.  
30/- each.



No. 4128.—Splitting Cup.  
4in. diameter x 3in. deep.  
51/- per doz.



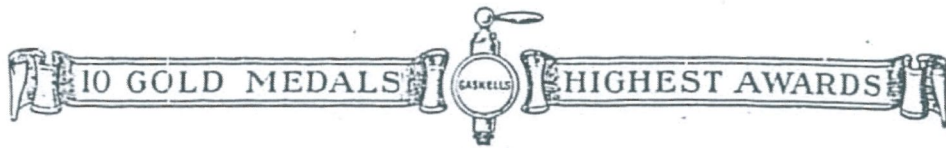
No. 4131.  
Medicine Measure.  
1oz. and 1/2 oz., 15/- per doz.  
2oz. " 1oz., 30/- "



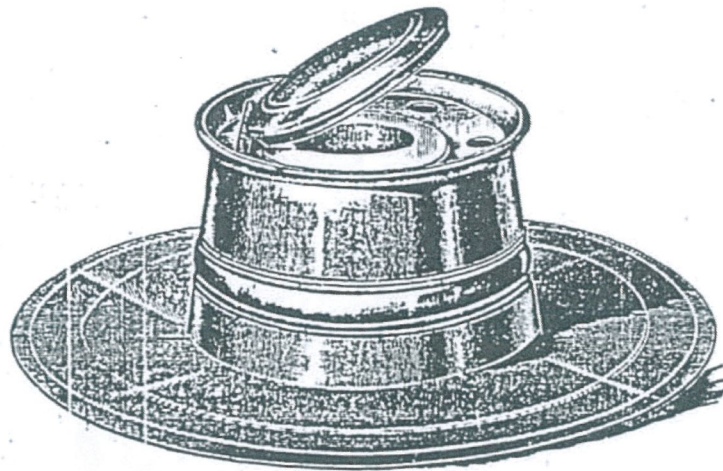
No. 4129. Best Hard Pewter,  
1/2 pint. 6/-  
3/4 pint. 7/6  
1 pint. 9/6  
1 1/2 pint. 14/6  
2 pint. 21/- each.  
1-gallon. 37/6  
57/6 each.



No. 4130.  
Double Measure.  
Best Hard Pewter.  
36/- per dozen.  
N.B.—This measure cannot be stamped.



## Cast Pewter Ink Stands



No. 1894.

With cover, earthenware pot, and extended base plate  
 (as illustration).

Approximate size of body ...	2½	3	3½	4	5 inches.
Diameter of plate ...	5	6	7	7½	9 "
Price ...	48/-	63/-	86/-	110/-	160/- per doz.

With cover, as above, but without plate—

Approximate size of body ...	2½	3	3½	4	5 inches.
Price ...	30/-	40/-	52/-	65/-	87/- per doz.

Without cover or plate—

Approximate size of body ...	2½	3	3½	4	5 inches.
Price ...	18/-	26/-	36/-	47/-	69/- per doz.

The above Inkstands can be supplied with extra large Plates,  
 for use in Banks, Government Offices, etc.

Prices on application.