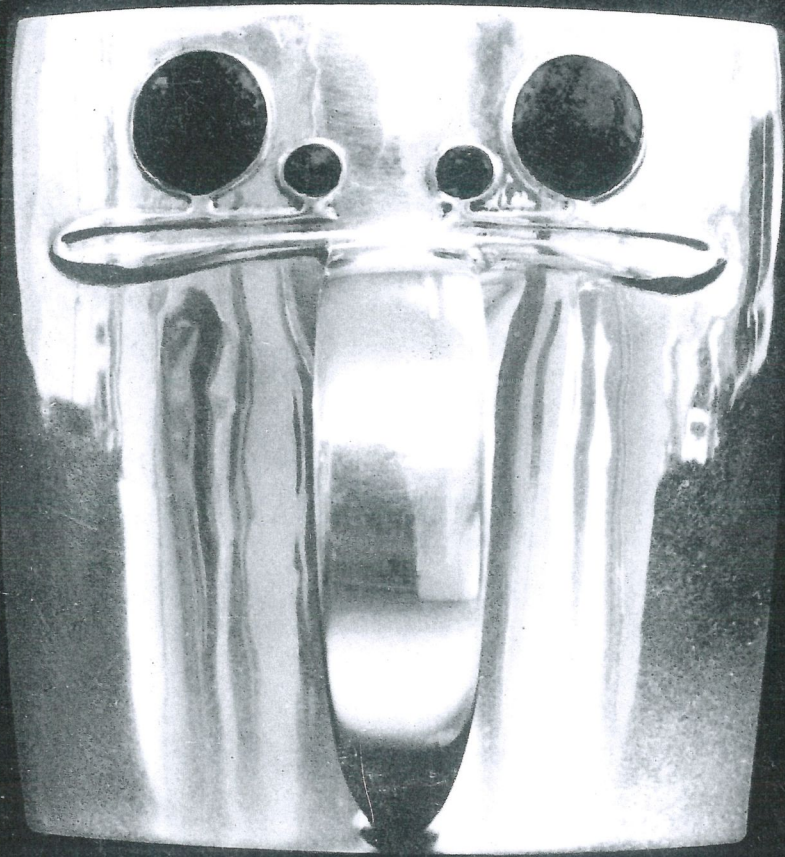
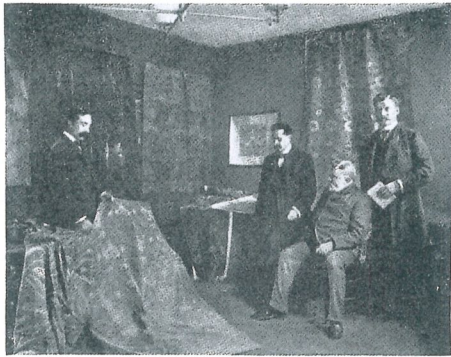


6705

CENTURY DECORATIVE : LONDON : LTD





Sir Arthur Liberty, seated, inspecting fabrics  
in the 'Trial Studio' c 1900

*Illustrated on front cover*  
39  
Squat silver cup

## Notes

### Sizes

Sizes given for items are all approximate and in centimetres. Measurements do not include handles, thumbpieces or other protrusions, unless stated to the contrary.

### Abbreviations

H: Height  
W: Width  
L: Length

### Ordering

Orders through the post should be accompanied by a remittance (except institutional bodies).

In the case of telephoned orders we will confirm availability and reserve the item for a reasonable period pending receipt of remittance.

Prices are exclusive of postage, packing, and insurance.

Catalogues are available on request.

Century Decorative (London) Ltd  
32 Thornhill Road  
Islington  
London N1 1HW

Telephone: 01-609 2957

Century Decorative (London) Ltd specialise in English Art Nouveau (Decorative.)

The period 1850 to 1910 saw the rise and fall of many idealistic principles. Exhibitions, both National and International, brought industrial design to the homes of thousands. Never before had so much artistically creative ability been turned towards a domestic market.

1861 saw the Socialist William Morris (primarily influenced by the Pre-Raphaelite Movement) leading the way in a conscious effort to sustain a combination of good design and high quality as related to commercial productions.

His ideas, one way or another, were reflected by most of the major manufacturers, so it was that, when, in 1875 Arthur Lasenby Liberty founded the firm of Liberty and Company the influence of the Morris Movement still had a tight rein. Liberty's however moved with the fashions, selling mainly Oriental imports and eastern fabrics. It was not until 1900 when the 'TUDRIC' range of Pewter and the 'CYMRIC' range of Gold and Silver was introduced that Liberty's established themselves as one of the most important innovators of the Art Nouveau Style, this period being called 'Style Liberty' in Italy.

It is, therefore, with due deference to Liberty and Company that Century Decorative issues this, its' first catalogue, entirely devoted to the Art Nouveau productions of Liberty and Company

Adrian Tilbrook

## Pewter

### 1 *Illustrated*

Tea Service comprising five pieces. Teapot set on two flat runners with a wickered handle. Either side of the handle is decorated with a stylised 'Honesty' design.

The Milk Jug is set on two flat runners, having the 'Honesty' motif either side of the handle.

The Sugar Bowl is set on two flat runners, having the 'Honesty' motif either side of the handle.

The Hot-Water Jug is set on two flat runners, with a wickered handle. Branching out from the handle is an exaggerated 'Honesty' design, the leaf shapes being triangular in formation. The lid has a wooden thumbpiece.

The Tray is large and rectangular, having two handles which form the 'Honesty' design.

All pieces bear the number 0231 RD 420290. The Milk, Sugar and Hot-Water Jug having 'English Pewter' 'Made for Liberty and Company', while the teapot and tray just bear the Registered Trade Name 'TUDRIC'.

This service was designed by Archibald Knox in 1903.

Teapot: H: 10.5 cm W: 16.5 cm  
Milk Jug: H: 6 cm W: 11 cm  
Sugar Bowl: H: 5.5 cm W: 11 cm  
Hot-Water Jug: H: 20.5 cm W: 8.5 cm  
Tray: H: 2 cm W: 34 cm  
L: 47.5 cm

Illustrated: Amaya, Page 64, Fig. 1. Manin (Journal of the Manx Language Society) Number 7 Douglas 1916 — Facing P. 383. Mentioned Art Nouveau Pewter. Victoria and Albert Museum, Circulation Department, Travelling Exhibition Catalogue, P.6 Items 1a, 1b and 1c.

Price: £70-00



1

2

Rectangular Tray. Designed by Archibald Knox about 1906. The ends of the tray rising slightly to form the handles. The inside being decorated in each corner with a circular motif based on a stylised plant form.

Having the number 0376. Rd 440913

H: 2 cm W: 26 cm L: 49 cm

Price: £15

3

Loving Cup. (Possibly designed by Eleanor Fortesque Brickdale in 1899) with two large handles. Decorated with Eight vertical tree forms of stylised 'Honesty'. A band running around the vase bears the motto 'For Old-Times Sake'.

Marked: W. 'TUDRIC' 010

H: 10 cm D: 9 cm  
Handle to Handle: 17 cm

Price: £10

4  
Vase — Inverted 'Bomb' Shape being supported by three spurs rising from the base to form handles. The decoration of interlaced plant motifs being on the cone between the spurs. Probably designed by Archibald Knox about 1906.

Marked: English Pewter 0226

H: 18 cm D: (at top) 6 cm  
(Spur to Spur 10 cm)

Price: £6

5 *Illustrated*

Cigarette Box having an enamel landscape inset in the lid, the remaining pewter and the sides having a hammered finish. The inside lined with cedar wood. Designed about 1903/4.

Marked: 0126

H: 3.75 cm W: 10 cm L: 10 cm

Price: £16

6  
Oval Cake Tray. The semi-circular handle and raised sides decorated with sprays of stylised plant forms having heart-shaped leaves. Designed about 1905.

Marked: English Pewter.  
Rd 448914 0359

H: 14.5 cm L: 23.5 cm

Price: £8

7  
Biscuit Box. In the form of a cube with slightly convex sides. Decorated with three horizontal rows of leaves, each alternate row having enamel upon the centre of the leaf formation. Designed by Archibald Knox about 1903.

Market: H. Made in England, Solkets.  
English Pewter. 0194

H: 11 cm W: 12 cm

Price: £18

8  
Circular 'Hand-Wrought' Plate in Mediaeval style. Having five kidney shape designs around the outer rim.

Marked: 'TUDRIC' Hand-Wrought  
Pewter Liberty and Company 0178

H: 2.5 cm D: 39 cm

Price: £15

9  
Small Rosebowl decorated with Stylised Plant Form the whole being supported by three looped feet.

Unmarked

H: 11 cm D: 12 cm

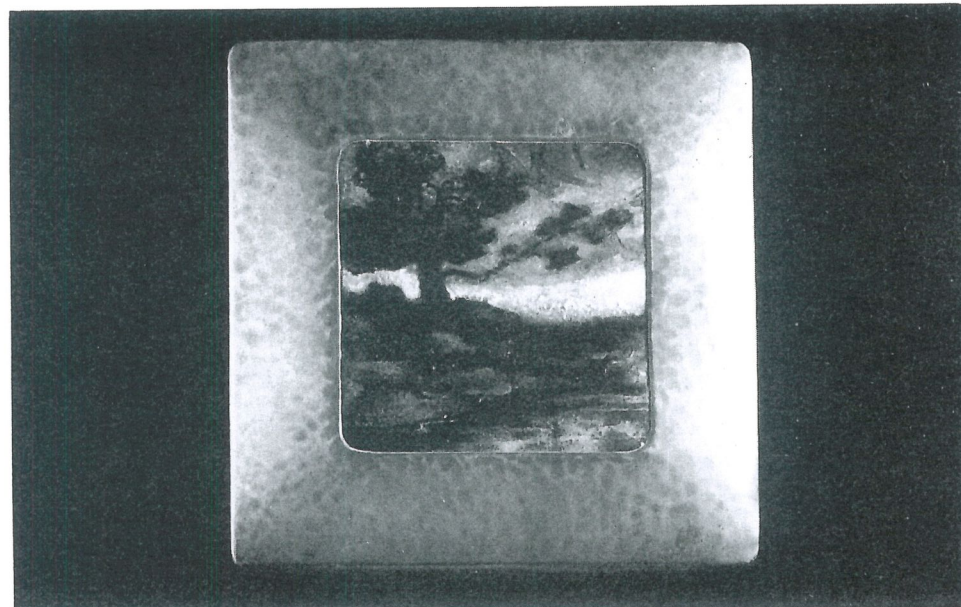
Price: £5

10  
Cylindrical Biscuit Barrel having two small handles near the top. The lid is flat with a round knob. Both decorated with four small heart-shaped leaves. About 1903/4.

Marked: 'TUDRIC' 059

H: 19.5 cm D: 12.5 cm

Price: £10



5

11  
Squat Circular Dish having two small handles bearing leaf shapes. Around the outer rim a band encompassing four stylised honesty designs. The whole being set upon a flat base and having the original green glass liner.

Marked: ENGLISH PEWTER 0163

H: 4 cm D: 14 cm

Price: £10

12  
Hot-Water Jug on Flat Runners to hold 2 pints. The handle being part of a curvilinear design of circular inspiration which (flows around) and ceases the base.

Marked: 'TUDRIC' RD 36774 0303

H: 21 cm D: 10.5 cm

Price £10

13  
Cylindrical Biscuit Box with a slightly domed lid embodying a sunken handle. Sides decorated with a (repetitive/rhythmic) row of stylised flower forms set with blue/green enamels. Designed 1903/4.

Marked: TUDRIC

H: 11 cm D: 8 cm

Price: £12

14  
Circular Card Tray with stepped lid. The Shallow bowl having a semi-circular (crescent shaped) design of stylised 'Honesty'. Probably designed by Archibald Knox about 1903.

Marked: 'TUDRIC' 0163

H: 1 cm D: 25 cm

Price: £20

**15 Illustrated**

Hotwater Jug to hold 1¼ pints. The cylindrical body being decorated around the base with a curvilinear line circling the body and ending in a leaf motif. The wickered handle leading to a wooden thumbpiece on the lid. Probably by Archibald Knox about 1903.

Marked: 'TUDRIC' RD 421108 0280

H: 19.5 cm D: 8 cm

Price: £12

**16**

Three Piece Tea Service comprising Milk Jug, Sugar Bowl and Teapot. Each piece having four stylised celtic knot designs on either side. The Teapot having an ornately wickered handle.

Marked: 'TUDRIC' 03030

Teapot: H: 12.5 cm D: 14 cm

Milk Jug: H: 6.5 cm D: 6.5 cm

Sugar Bowl: H: 7 cm D: 9 cm

Price: £16 for the 3 pieces.

**17**

Two Pieces of a Tea Service comprising Teapot and Sugar Bowl. Having a continental influence about the curvilinear design upon each piece.

Marked: 'TUDRIC' 025  
(Teapot is marked CAROLEAN)

Teapot: H: 8.5 cm D: 8.5 cm

Sugar Bowl: H: 4.5 cm D: 4 cm

L: 10 cm

Price: £8

**18**

Pair of Flower Vases having a small circular bowl on a narrow stem rising from a circular base. Curling stems, rising from leaf shapes on the base to the sides of the bowl, form two handles. About 1903/4.

Marked: 'TUDRIC' 029

H: 25 cm W: 14.5 cm

Illustrated: Mario Amaya

Page: 63 Figure: 1

Price: £12

**19 Illustrated**

A Pewter Mounted Clear Glass Decanter by Liberty and Company. Though this does not bear the Liberty Mark, a contemporary catalogue illustrates the piece. The Glass however, is marked 'WEBB' — presumably Webb of Webb and Corbett.

H: 31 cm D: 10.5 cm

Price: £45

**20**

Squat Pewter Jug. Probably designed by Archibald Knox. The sides being covered in an interwoven design of stylised Honesty. The lid having a large domed section and a thumbpiece. The Handle being wickered.

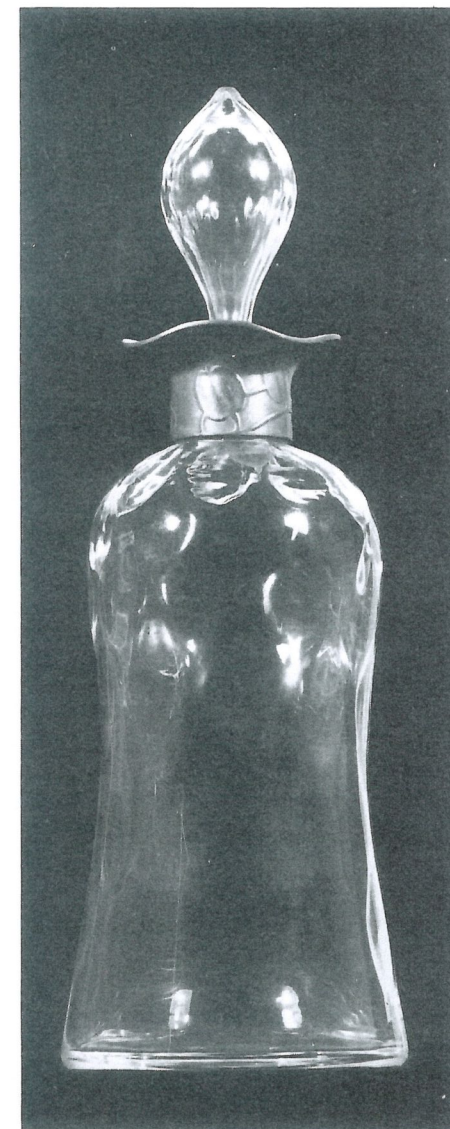
Marked: 'TUDRIC' 0958 3

H: 13.5 cm D: 9.5 cm

Price: £9



15



19

21  
A Circular Ashtray. The centre having a raised Entrelac pattern of leaves and honesty. Probably designed by Archibald Knox.

Marked: 'TUDRIC' 0231

H: 1 cm D: 14 cm

Price: £6

22  
A Semi-Circular Crumb Scoop. The two corners decorated with a pair of stylised leaves on an interlaced stem. Designed about 1905.

Marked: Made in England  
English Pewter 0532

H: 3.5 cm W: 10.5 cm L: 24.5 cm

Price: £5

23  
A Large Oval Tray in the Arts and Crafts Manner. Having raised sides which form the exaggerated handles. Beaten finish.

Marked: English Pewter  
Made by Liberty & Co. 025

H: 2.5 cm W: 33 cm L: 45.5 cm

Price: £9

24  
A Circular Dish or Salver having raised sides (these being cut in three places). The centre having a triangular raised design giving way to a repetitive circular design of stylised leaf forms.

Marked: 'J' Made by Liberty & Co.  
English Pewter 044

H: 4 cm D: 26 cm

Price: £10

25  
Inkstand in the form of a shallow circular dome with a central hinged lid. Decorated with a Double Knot design with circular 'Bud' forms. Possibly Archibald Knox.

Marked: 'TUDRIC' 0521

H: 3.5 cm

Illustration: M. AMAYA —  
Page: 62 Fig: I

Price: £10

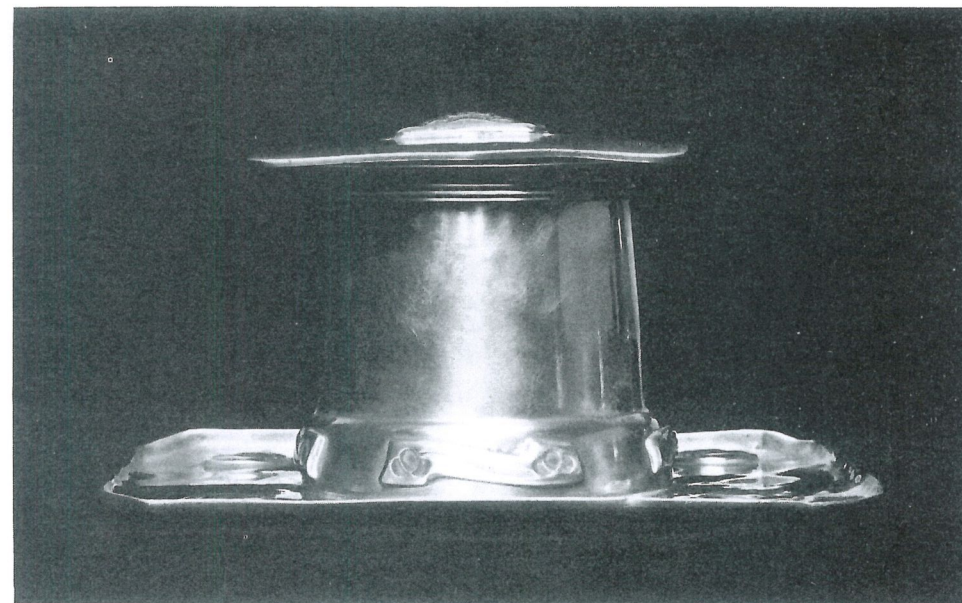
26 *Illustrated*  
Inkstand in the form of a cylinder set on a square tray base. The hinged lid having a raised, rectangular design; the tray is decorated in the four corners with circular flower motifs. About 1903/4.

Marked: 'TUDRIC' 0141

H: 7.5 cm W: 16 cm

Illustration: Modern Silver —  
Graham Hughes Page: 147 Fig: 251

Price: £12



26

27  
Inkstand in the form of a dome set on a flat tray base. The base of the dome having four raised stylised leaf forms: the hinged lid has a raised circular flower motif.

Marked: 0140

H: 6.5 cm W: 14 cm

Price: £10

28  
Inkwell in the form of a squat circular cone-shape. Decorated with a double knot design, with circular 'Bud' forms. The hinged lid having a central knob.

Marked: English Pewter 0653

H: 6.5 cm D: 10 cm

Price: £10

29  
An Oval Cake Basket. The handle and the two sides of the tray are decorated with rows of square leaves on trailing stems, with rounded flower forms. Designed about 1905.

Marked: English Pewter Rd  
449032 0357

Height: 7 cm W: 21.5 cm L: 31 cm

Price: £7

30 *Illustrated*  
A Small Oval Serviette Ring. Having a stylised leaf design for the centre, being decorated with two pieces of blue and green enamel — mounted on copper.

Marked: Made by Liberty & Co.  
English Pewter 0919

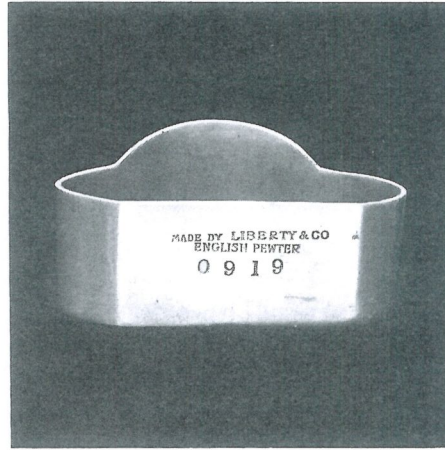
H: 3.5 cm D: 5.5 cm

Price: £4.50

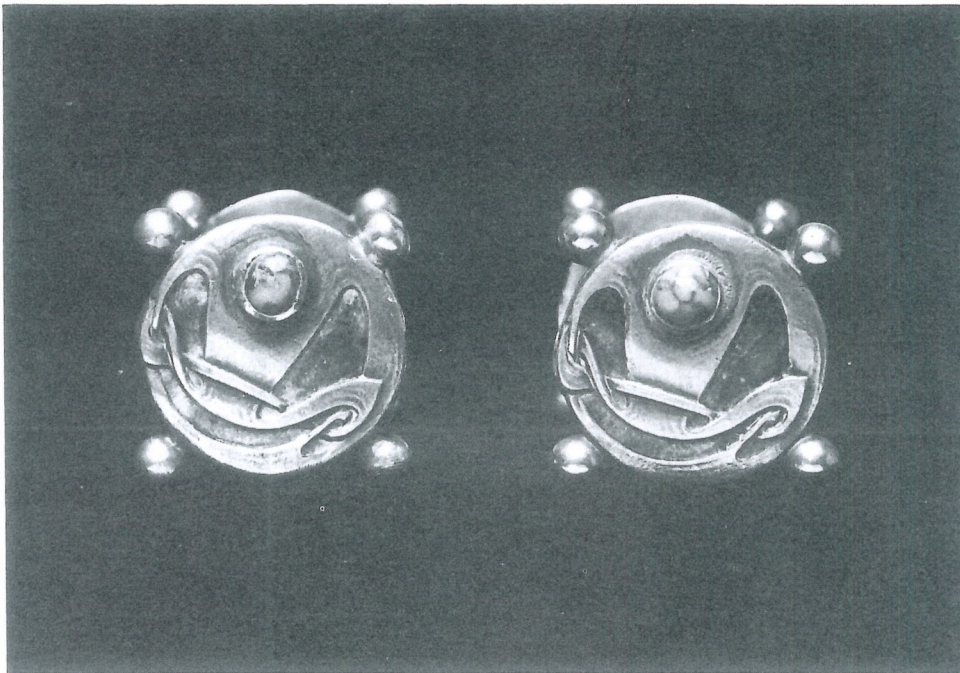




30



30



32

## Silver

31

A Set of six Silver Spoons. The Handles ending in a spade shape composed of stylised leaves.

Marked: L & Co. Birmingham 1902 'CYMRIC'

L: 11 cm

Price: £18

32 *Illustrated*

Pair of Silver Knife Rests having a Celtic Entrelac Motif in Green and Blue Enamel, being set with Turquoise Matrix Cabachon either end of the central (axis/axle).

Marked: L & Co. Birmingham 1906 'CYMRIC' Rd 464

H: 2.5 cm L: 5 cm

Price: £26

33

Small Silver Tea Caddy of oval formation. Having two bands of Green/Blue Enamel entrelac motif running around the body. The top being set with a Turquoise Matrix (Cabachon).

Marked: L & Co. Cymric RD 691 Birmingham 1905

H: 9 cm W: 6 cm L: 8 cm

Price: £50

34

Silver Mounted Decanter of Classical Shape. The mount having a square top, each side forming a lip, being set either side with a Turquoise Matrix (Cabachon), while between is a Green/Blue/Purple enamelled celtic motif.

Marked: L & Co. Birmingham 1906 RD 2230

H: 30 cm

Price: £65

35

A Set of Four Silver Menu-Holders. The 'L' shaped rest supporting a Classical Celtic Entwined Motif. The centres having pale green enamel.

Marked: L & Co. RD 498

L: H: 3 cm

Price: £12

36

Silver Serviette Ring. Having as its decoration a circular disc bearing a repeat design of 'Honesty' enamelled in Green/Blue.

Marked: L & Co. Birmingham 1909

H: 4 cm

Price: £7.50

37  
**Silver Cruet** comprising three pieces. The Salt Pot being of cylindrical shape becoming larger towards the base, the hinged lid being of dome formation having a 'flick back' thumbpiece (liner).

The Mustard Pot being a larger version of the Salt, having both liner and spoon.

The Pepper Shaker is both cylindrical and tall, with a domed perforated top.

Marked: L & Co. Birmingham 1901 'CYMRIC'

H: Salt and Mustard 5 cm  
Pepper 5.5 cm

Price: £45

38 *Illustrated*  
**A Silver Brooch** of Celtic Inspiration. Having Green/Blue enamel with a pin as a fastener.

Marked: Cymric

Price: £12

39 *Illustrated on front cover*  
**Silver Cup. Squat** set on circular base with slightly curved sides. The enamelled Entrelac Motif set above wide loop handle.

Marked: L & Co. Birmingham 1906 'CYMRIC'

H: 8.5 cm D: 8 cm

Price: £110

40  
**Silver Vase of Trumpet Formation**, set on a flat circular base, having a repeat design around the body of stylised plant leaves and stems. Being enamelled in Ultramarine Blue, Green, Orange and Apple Green.

Marked: L & Co Birmingham 1906 RD 467115

H: 15 cm W: 8 cm

Price: £45

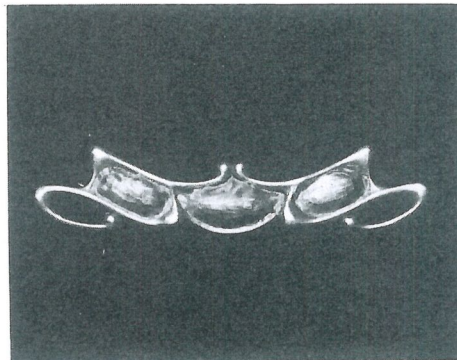
41 *Illustrated*  
**Large Silver Bowl** having a band around the top, incorporating a stylised Celtic 'Knot' form on a Kidney-shaped Hammered Background. The whole being supported upon three looped feet.

Marked: L & Co. Birmingham 1903 'CYMRIC'

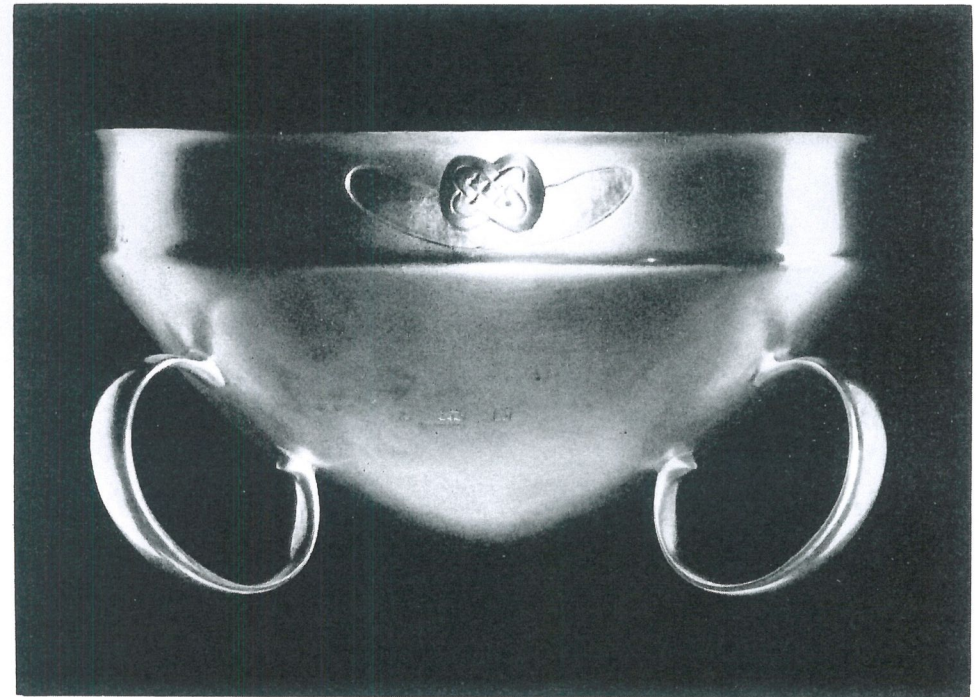
Weight: Approximately 13 Troy Ounces

H: 10 cm D: 16.5 cm

Price: £54



38



41

---

## CENTURY DECORATIVE : LONDON : LTD

Adrian John Tilbrook

32 Thornhill Road  
Islington  
London N1 1HW

01-609 2957

English Art Nouveau	Sculptures
Metalwork	Bronzes
Furniture	Fine Art
Books	Paintings
Glass	Pictures
Pottery and ceramics	Prints
Posters	Etchings

---

Acknowledgement:  
Photograph of Sir Arthur Liberty and  
plates from 'Pewter' catalogue  
reproduced by kind permission  
of Liberty & Co, London

A revival of an ancient craft  
**E N G L I S H**  
**P E W T E R**  
P R A C T I C A L L Y  
U N T A R N I S H A B L E  
D E S I G N E D A N D M A D E B Y  
L I B E R T Y & C O . . .

Description from original Liberty 'Tudric' catalogue

*Illustrated on back cover*  
Page from original 'Tudric' pewter catalogue c 1903

ENGLISH PEWTER MADE BY LIBERTY & CO

TEA AND COFFEE SETS, CRUETS AND SERVIETTE RINGS



No. 1. With green glass lining and pearl spoon. 1 in. high. 3/6



No. 2. With green glass lining and pearl spoon. 2 1/2 ins. high. 4/6



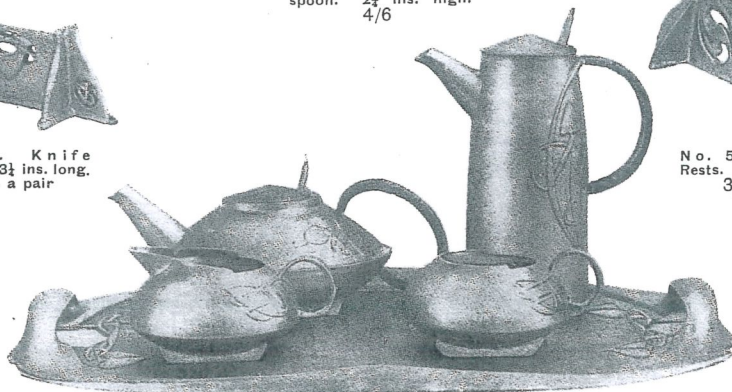
No. 3. 1 1/2 ins. high. 3/-



No. 4. Knife Rests. 3 1/2 ins. long. 3/- a pair



No. 5. Knife Rests. 3 1/2 ins. long. 3/- a pair



		No. 6.							
		£	s.	d.	£	s.	d.		
Coffee Pot. Capacity 1 1/2 pints	-	1	7	6	Cream Jug	-	9	6	
Tea Pot. Capacity 1 1/2 pints	-	1	1	0	Sugar Basin	-	10	6	
Hot Water Jug. Capacity 1 1/2 pints	-	1	7	6	Tray, 19 by 13 1/2 ins.	-	1	18	6
Complete Set	-	£6 14 6							



No. 7. With green glass lining and pearl spoon. 1 in. high. 3/6



No. 8. With green glass lining and pearl spoon. 1 1/2 ins. high. 4/6



No. 9. 1 1/2 ins. high. 3/-



No. 10. Inlaid with enamel. 4/-



No. 11. 1 1/2 ins. wide. 1/6



No. 12. 1 1/2 ins. wide. 1/6



No. 13. Inlaid with enamel. 4/-

LIBERTY & CO

[Makers of Jewelry and Artistic  
Wares in Gold, Silver and Metal.]

REGENT ST  
LONDON.