

6704



# Cornish Pewter Ware

---



Series No. 21. 3rd Edition.

INDEX.

	Page		Page
<b>BASKETS</b> , Bread ..	18	<b>ICE</b> Water Set ..	25
"    Cake ..	7, 18, 31	<b>JUGS</b> , Hot Water ..	4, 5, 14, 15
<b>Beer</b> Mugs ..	24, 25	"    Wine ..	5, 24, 25
"    Tankards ..	24	<b>LAMPS</b> , Electric ..	20, 21, 22, 23
<b>Biscuit</b> Boxes ..	7, 15	Lemonade Set ..	25
<b>Bowls</b> , Flower ..	16, 17, 21	Liqueur Set ..	24
"    Fruit ..	12, 13, 16, 17, 31	<b>MUGS</b> ..	24, 25
"    Rose ..	13, 16, 17, 21, 28, 29	Mustards ..	20, 26
<b>Bread</b> Baskets ..	18	<b>PEPPERS</b> ..	20, 26
<b>Butters</b> ..	20	"Pewtero" Polish ..	Inside back cover.
<b>CAKE</b> Baskets ..	7, 18, 31	<b>RINGS</b> , Serviette ..	26
"    Dishes ..	16, 17, 30	Rose Bowls ..	13, 16, 17, 21, 28, 29
<b>Café</b> Set ..	10	<b>SALTS</b> ..	20, 26
<b>Candelabra</b> ..	9	Sugar Dredgers ..	30, 31
<b>Candlesticks</b> ..	9, 27	Syphon Stands ..	8
<b>Casserole</b> Dishes ..	7	<b>TANKARDS</b> ..	24
<b>Channes</b> , Wine ..	5, 24, 25	Tazza ..	16, 30
<b>Cheese</b> Dish ..	7	Tea Caddy ..	29
<b>Cigarette</b> Boxes ..	8	Tea and Coffee Services ..	2, 3, 4, 5, 6, 10, 11, 12, 13, 14, 15
<b>Cocktail</b> Shakers ..	8	<b>Tobacco</b> Boxes ..	28
<b>Coffee</b> and Tea Services ..	2, 3, 4, 5, 6, 10, 11, 12, 13, 14, 15	Trays ..	3, 11, 22
<b>Condiment</b> Sets ..	20, 26	Trinket Boxes ..	31
<b>DISHES</b> , Cake ..	16, 17, 30	<b>VASES</b> , Flower ..	19, 30, 31
"    Casserole ..	7	<b>WAITERS</b> ..	23
"    Cheese ..	7	Wine, Channes ..	5, 24, 25
"    Fruit ..	16, 17, 30, 31	"    Jugs ..	5, 24, 25
<b>ELECTRIC</b> Lamps ..	20, 21, 22, 23	"    Sets ..	24, 25
<b>FERNPOTS</b> ..	20, 28, 29		
<b>Flower</b> Bowls ..	16, 17		
"    Vases ..	19, 30, 31		
<b>Fruit</b> Bowls ..	12, 13, 31		
"    Dishes ..	16, 17, 18, 30, 31		
<b>HOT</b> Water Jugs ..	4, 5, 14, 15		

# Cornish Pewter Ware



Manufactured by

## James Dixon & Sons Ltd.,

INCORPORATING

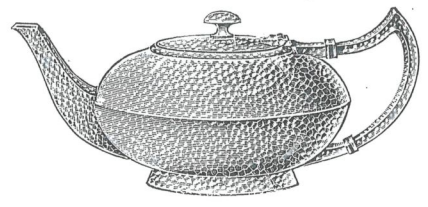
### Wm. Hutton & Sons,

CORNISH PLACE,  
Sheffield.

London, Melbourne, Sydney, Lausanne, Cape Town,  
Durban, Johannesburg.



CORNISH PEWTER WARE.



No. W 1800/1  
(Metal Handles.)



Brown Fibre Handles No. W 1800. Same Prices (illustration Page 5).

	COFFEES.				TEAS.			
	2	3	4	5	2	3	4	5 half-pints.
Hammered	41/-	44/-	47/-	52/-	37/6	41/-	44/-	48/-
Plain	29/-	30/-	31/6	34/-	24/-	26/-	27/-	29/-
	SUGARS.				CREAMS.			
	1	1½	2 half-pints.	¼	¼	¼	½ pint.	
Hammered	21/-	22/-	24/6	17/6	18/-	20/6		
Plain	13/-	13/6	15/-	10/6	11/6	13/-		
	COVERS TO SUGARS.							
	Hammered	..	..	..	6/6	extra.		
	Plain	..	..	..	5/6	..		

TRADE  MARK

CORNISH PEWTER WARE.



No. W 1807/1  
(Metal Handles.)



No. W 1875.

	CVAL WAITER				ROUND (No. W 1875/1)			
	12	14	16	18 ins.	12	14 in.		
Hammered	34/-	47/6	62/-	80/-	48/-	60/-		
Plain	22/-	30/6	40/6	54/-	34/-	43/6		
	No. W 1807/1				TEAS.			
	2	3	4	5	2	3	4	5 half-pints.
Hammered	33/-	36/-	39/-	42/-	26/-	29/-	31/-	34/-
Plain	28/-	30/-	32/-	34/-	21/-	23/-	25/-	27/-
	SUGARS.				CREAMS.			
	1	1½	2 half-pints.	¼	¼	¼	½ pint.	
Hammered	15/-	16/-	18/-	12/6	13/-	15/-		
Plain	11/-	12/-	13/-	9/-	10/-	11/-		

TRADE  MARK



CORNISH PEWTER WARE.

HOT WATER JUGS.



No. W 1811/1  
 Hammered 2 3 4 half-pints  
 .. 36/6 41/- 44/-  
 Plain .. 27/- 30/- 32/6



No. W 1812/1  
 Hammered 2 3 4 half-pints.  
 .. 37/- 40/- 43/6  
 Plain .. 25/6 27/- 29/6



No. W 1806  
 Brown Fibre Handle.

COFFEES.

Hammered 2 3 4 5 half-pints.  
 .. 31/- 32/6 35/- 38/-  
 Plain .. 26/6 28/- 30/- 32/-

TEAS.

Hammered 26/- 27/- 29/6 32/-  
 Plain .. 22/- 23/- 25/- 27/-

SUGARS.

Hammered 1 1 1/2 2 half-pints.  
 .. 11/6 13/- 14/-  
 Plain .. 8/6 9/6 10/-

CREAMS.

Hammered 1/2 1/2 1/2 pint.  
 .. 11/6 12/- 13/-  
 Plain .. 8/6 9/- 10/6



No. W 1810/1

TRADE  MARK

CORNISH PEWTER WARE.

HOT WATER JUGS.



No. W 1813 P  
 Hammered 2 3 4 half-pints  
 .. 27/- 31/- 35/-  
 Plain .. 17/- 20/- 23/-

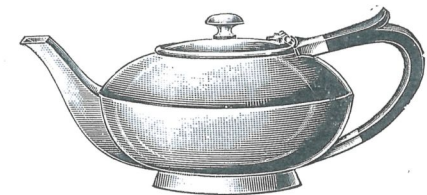


No. W 1814 P  
 Hammered 2 3 4 half-pints.  
 .. 26/- 30/- 34/-  
 Plain .. 16/- 18/- 20/-



No. W 1856 P  
 (Wickered Handle.)

Hammered 2 3 4 half-pints.  
 .. 32/- 34/- 37/-  
 Plain .. 25/- 27/- 28/6



No. W 1800  
 (Brown Fibre Handles.)  
 For prices, see page 2.

JAMES DIXON & SONS LTD.,

SHEFFIELD.

TRADE  MARK



CORNISH PEWTER WARE.



No. W 1801/1  
(Metal Handles.)



Brown Fibre Handles No. W 1801. Same Prices.

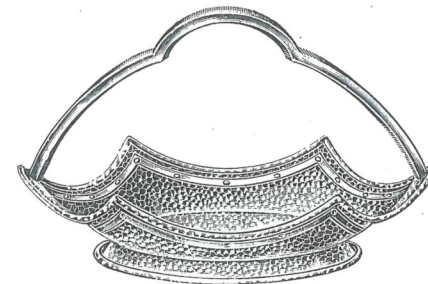
COFFEES.					TEAS.			
	2	3	4	5	2	3	4	5 half-pints
Hammered	40/6	43/6	47/6	52/-	35/6	39/-	43/-	47/6
Plain	30/-	31/6	34/-	35/-	25/-	27/-	28/6	31/-

SUGARS.				CREAMS.		
	1	1½	2 half-pints.	½	½	½ pint.
Hammered	22/-	23/6	25/-	19/-	19/6	21/-
Plain	14/-	14/6	15/6	12/-	13/-	13/6

COVERS TO SUGARS.			
Hammered	..	..	.. 6/6 extra.
Plain	..	..	.. 5/6 ..

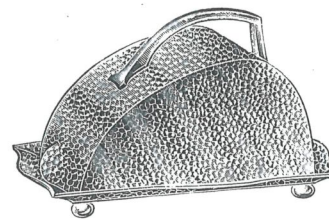
TRADE  MARK

CORNISH PEWTER WARE.



No. W 1892  
CAKE OR FRUIT BASKET. 10 in.

Hammered .. 48/- each.  
Plain .. 33/- ..



No. W 1840  
CHEESE DISH. 7¼ x 6 in.  
Hammered .. 43/6 each.  
Plain .. 33/- ..



No. W 1896  
CASSEROLE DISH. 7½ in.  
With Pyrex Glass Lining.

Hammered .. 37/6 each.  
Plain .. 33/- ..



No. W 1897  
'BISCUIT BOX.

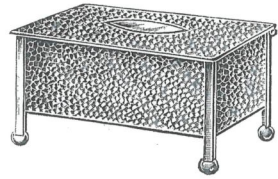
Hammered .. 32/- each.  
Plain .. 21/- ..

JAMES DIXON & SONS LTD.,  
SHEFFIELD.

TRADE  MARK

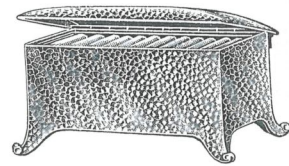


CORNISH PEWTER WARE.



No. W 1846

CIGARETTE BOX, for 100.  
 Hammered .. 37/6 each.  
 Plain .. 28/- "



No. W 1845

CIGARETTE BOX, for 100.  
 Hammered .. 35/- each.  
 Plain .. 25/- "



No. W 1893

SYPHON STAND.

Hammered .. 42/- each.  
 Plain .. 31/- "



No. W 1895

COCKTAIL SHAKER.

1 pint .. 12/- each.  
 With Strainer 14/- "

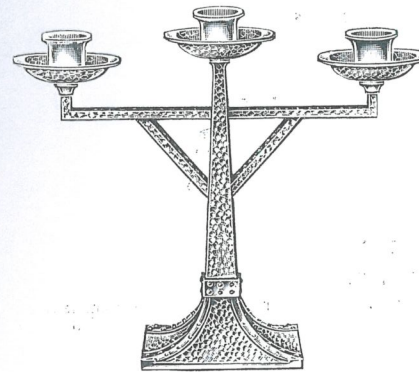


No. W 1894

COCKTAIL SHAKER.

	1	1 1/2 pint.
Hammered ..	11/-	15/- each.
Plain ..	9/-	13/- "
	With Strainer.	
Hammered ..	13/-	17/- each
Plain ..	11/-	15/- "

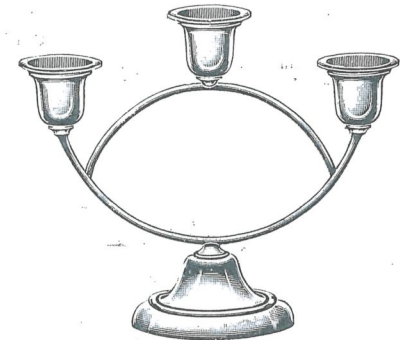
CORNISH PEWTER WARE.



No. W 1830/1

CANDELABRA, 3-Light.

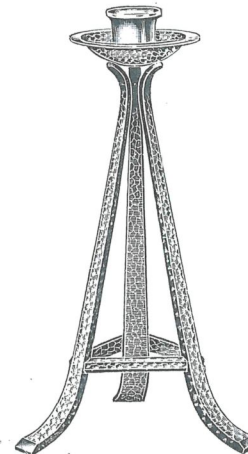
9 in.  
 80/- per pair.



No. W 1941

CANDELABRA, 3-Light.

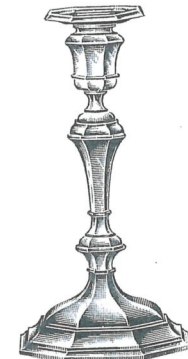
Height, 7 1/2 in.  
 51/- per pair.



No. W 1935

"BEACON" CANDLESTICKS.

9 1/2 in.  
 36/- per pair.



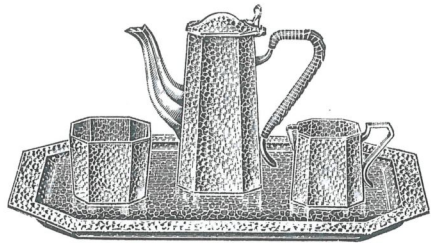
No. W 1940

CANDLESTICKS.

8 1/2 in.  
 52/- per pair.

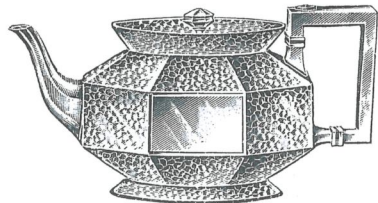


CORNISH PEWTER WARE.



No. W 1924  
CAFÉ SET.

Coffee, 1 half-pint. 21/-  
Sugar. 10/-  
Cream. 10/-  
Tray, 11 in. 28/-  
Complete. 69/-



No. W 1808

	COFFEES.				TEAS.			
	2	3	4	5	2	3	4	5 half-pints.
Hammered ..	38/-	42/-	46/-	50/-	34/6	38/-	42/-	46/-

	SUGARS.			CREAMS.		
	1	1½	2 half-pints.	¼	½	¾ pint.
Hammered ..	23/-	25/-	27/-	20/-	22/-	24/-

COVERS TO SUGARS.

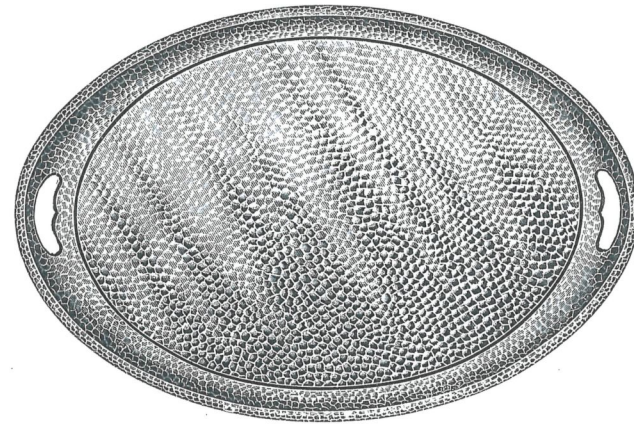
Hammered ..	6/6 extra.
Plain ..	5/6 ..

TRADE  MARK

CORNISH PEWTER WARE.



No. W 1804  
Brown Fibre Handle.



No. W 1970 Tray.

	COFFEES.				TEAS.			
	2	3	4	5	2	3	4	5 half-pints
Hammered ..	36/-	37/6	42/-	45/-	26/-	29/6	33/6	38/-
Plain ..	24/-	26/-	29/-	32/-	18/6	20/-	22/-	25/-

	SUGARS.			CREAMS.		
	1	1½	2 half-pints.	¼	½	¾ pint.
Hammered ..	14/6	16/6	19/-	11/-	13/-	15/6
Plain ..	9/-	10/-	12/-	7/-	8/-	10/6

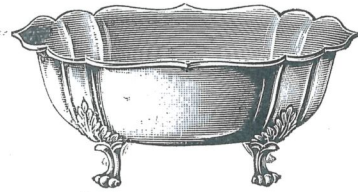
COVERS TO SUGARS.

Hammered ..	6/6 extra.
Plain ..	5/6 ..

No. W 1970 OVAL TRAY, Hammered, 20 in. .. 67/-

TRADE  MARK

CORNISH PEWTER WARE.



No. 269  
FRUIT BOWL.  
9 in.  
34/-



No. 269

Coffees	2	3	4 half-pints.
Teas	33/-	34/6	36/-
	25/-	26/6	28/-

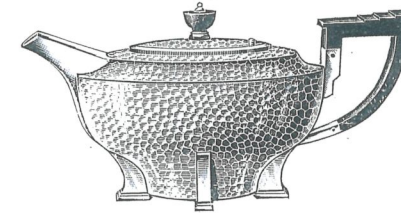
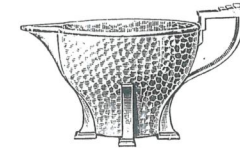
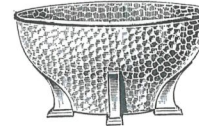
Sugars with Covers	1	2 half-pints.
	16/-	20/-

Sugars without Covers	1/2 pint.
Creams	13/-
	14/6
	15/-
	16/-

Oval Tray, to match	16	18 in.
	49/-	60/-

TRADE  MARK

CORNISH PEWTER WARE.



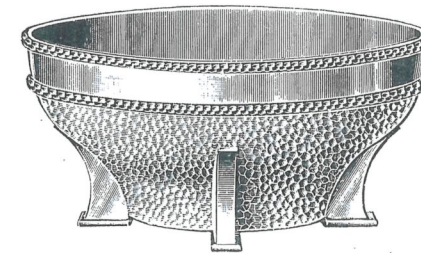
No. W 1886

Brown Fibre Handle and Knob.

	TEAS.		SUGAR.		CREAMS.	
	4	5 half-pints.	1 half-pint.	1/2	1/2 pint.	1/2 pint.
Hammered	51/-	55/-	19/-	18/-	20/-	22/6
Plain	40/-	46/-	15/-	13/6	15/6	17/-

COFFEE OR HOT WATER JUG.

	3	4 half-pints.
Hammered	53/-	56/-
Plain	45/6	47/6



No. W 1950

FRUIT BOWL.

	8 1/2 in. dia.	
Hammered	44/-	each.
Plain	36/-	

TRADE  MARK



CORNISH PEWTER WARE.



No. W 1809

	COFFEES.				TEAS.			
	2	3	4	5	2	3	4	5 half-pints.
Hammered	33/-	37/-	40/-	45/-	31/6	34/-	37/6	40/-
Plain ..	30/6	34/6	37/6	42/6	29/6	32/-	35/6	38/-
	SUGARS.				CREAMS.			
	1	1½	2 half-pints.		¼	½	½ pint.	
Hammered	18/-	20/-	22/-		15/-	16/6	18/-	
Plain ..	16/6	18/6	20/6		13/6	15/-	16/6	

	COVERS TO SUGARS.	
Hammered	..	6/6 extra.
Plain ..	..	5/6 ..



No. W 1800

HOT WATER JUG.

	2	3 half-pints.
Hammered	41/-	44/- each.
Plain ..	28/-	30/- ..



No. W 1932/1  
HOT WATER JUG.

	2	3	4 half-pints.
Hammered	32/-	35/-	38/6 each.
Plain ..	24/-	26/-	29/- ..

TRADE  MARK

CORNISH PEWTER WARE.



No. W 1946

	COFFEES.				TEAS.				
	2	3	4	5	1	2	3	4	5 half-pints.
Hammered	20/6	22/6	23/6	25/-	16/-	17/-	18/-	19/-	20/-
	SUGARS.				CREAMS.				
	½	1	1½	2 half-pints.	¼	½	½ pint.		
Hammered	8/-	9/-	9/6	10/6	7/-	7/6	8/6		

COVERS TO SUGARS.

Hammered	..	..	..	6/6 extra.
Plain ..	..	..	..	5/6 ..



No. W 1965

BISCUIT BOX.

Hammered	..	..	..	18/-
----------	----	----	----	------



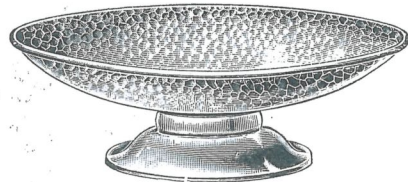
No. W 1945

HOT-WATER JUG.

	1	2	3	4 half-pints
Hammered	12/-	14/-	16/-	18/-

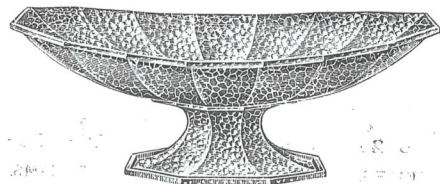
TRADE  MARK

CORNISH PEWTER WARE.



No. W 1903  
CAKE STAND.

10 1/4 in.  
Hammered .. .. 30/6 each.  
Plain .. .. 24/- "



No. W 1854  
FRUIT STAND.

11 in.  
Hammered .. .. 42/- each.  
Plain .. .. 34/- "

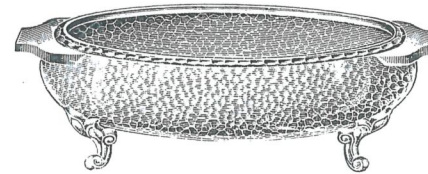


No. W 1931  
FRUIT BOWL.

10 in.  
Hammered .. .. 41/6 each.  
Plain .. .. 36/- "

TRADE  MARK

CORNISH PEWTER WARE



No. W 1933  
FRUIT BOWL.

8 in.  
Hammered .. .. 29/6 each.  
Plain .. .. 23/- "



No. W 1936  
ROSE BOWL.

8 in.  
Hammered .. .. 39/- each.  
Plain .. .. 30/6 "



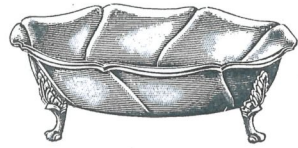
No. W 1884  
FLOWER OR FRUIT BOWL.

9 1/2 in.  
48/- each.

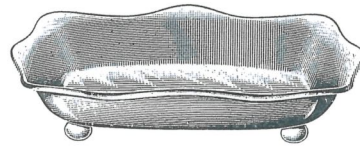
TRADE  MARK



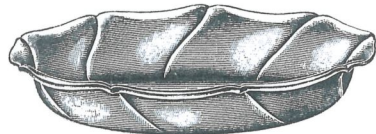
CORNISH PEWTER WARE.



No. W 1905 P  
FRUIT DISH.  
7½ in.  
17/6 each.

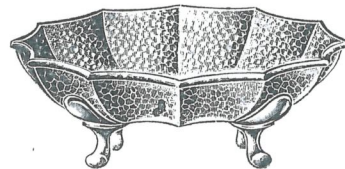


No. W 1841 P  
BREAD BASKET.  
9 in.  
22/6 each.



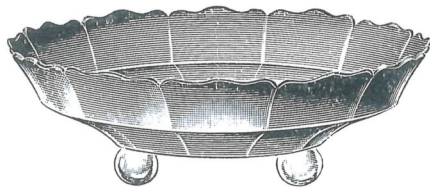
No. W 1906 P  
FRUIT DISH.

	9½ in.	
Hammered	.. ..	25/6 each.
Plain	.. ..	20/6 ..



No. W 1842  
CAKE DISH.

	8½ in.	
Hammered	.. ..	30/6 each.
Plain	.. ..	23/6 ..

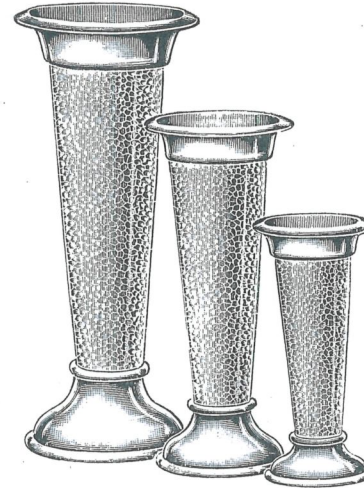


No. W 1909  
FRUIT DISH.  
9 in.  
29/- each.

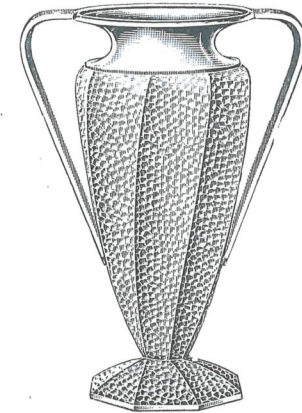
TRADE  MARK

CORNISH PEWTER WARE.

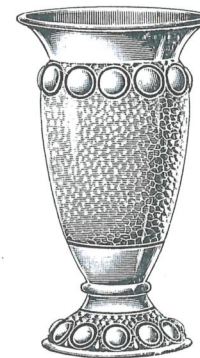
FLOWER VASES.



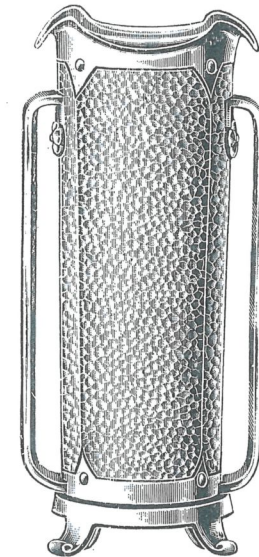
No. W 1960  
5 6/6    7 10/-    9 12/6    11 in. 17/- each.



No. W 1877  
8½ in.  
32/- each.



No. W 1861  
7 in.  
18/-



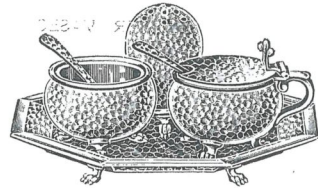
No. W 1916  
9 32/-    11 in. 36/6 each.

TRADE  MARK

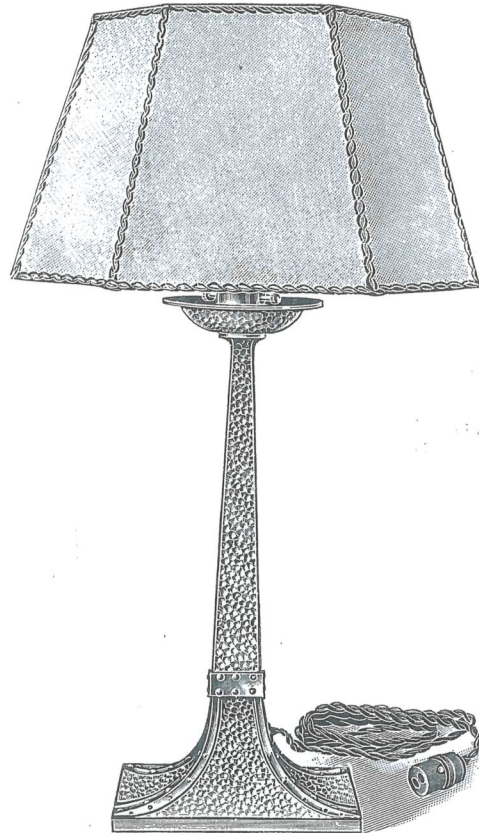
CORNISH PEWTER WARE.



No. W 1844  
BUTTER  
with Glass Lining.  
9/6 each.



No. W 1938  
Mustard and Spoon .. 12/2  
Salt and Spoon .. 9/2  
Pepper .. 7/6  
Tray .. 13/-  
Complete .. 41/10

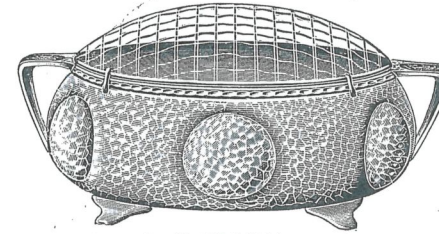


No. W 1830/2  
ELECTRIC LAMP.

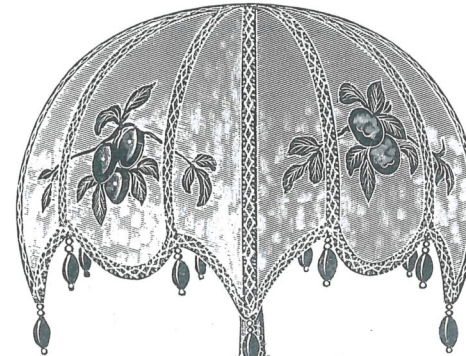
	9	12	14 in.
Hammered .. ..	31/-	41/-	55/- each
Plain .. ..	26/6	34/-	47/6 "
Washable "Silglass" Shade	8/-	12/-	15/- extra.

TRADE  MARK

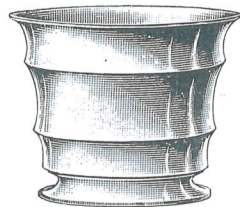
CORNISH PEWTER WARE.



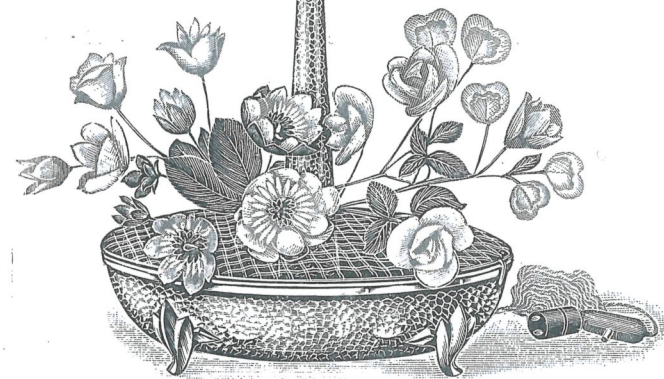
No. W 1824  
ROSE BOWL.  
8 1/2 in. dia. .. 57/- Net .. 8/- each.



No. W 1878  
FERN POT.  
6 in.  
13/6 each.



No. W 1883  
FERN POT.  
5 1/2 in. dia.  
Plain .. 15/- each.



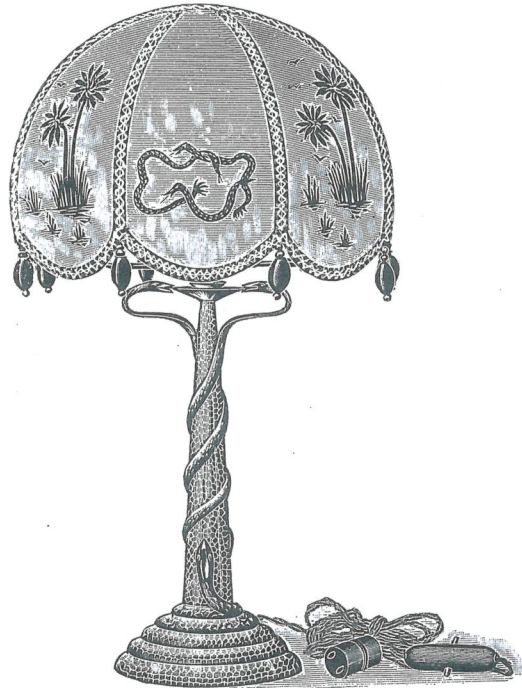
No. W 1951  
ELECTRIC LAMP AND FRUIT OR FLOWER BOWL.

	11 1/2 in.	
Lamp .. ..	83/-	
Coloured Parchment Washable Shade .. ..	28/-	
Flower Net .. ..	8/-	
Complete .. ..	119	

TRADE  MARK



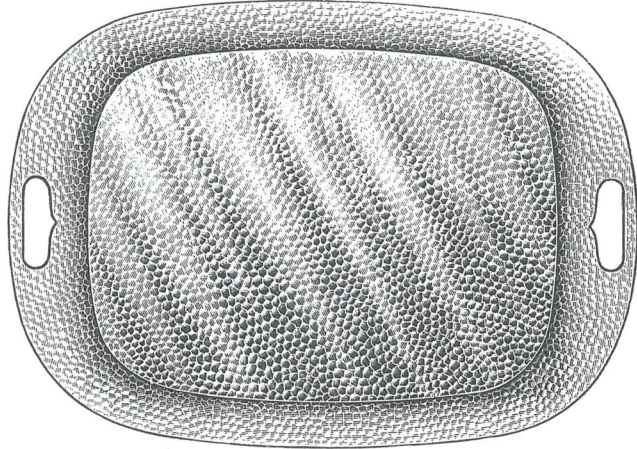
CORNISH PEWTER WARE.



No. W 1868

ELECTRIC LAMP.

Electric Lamp, 10½ in. .. 45/- Coloured Parchment Washable Shade .. 20/- Complete .. 65/-

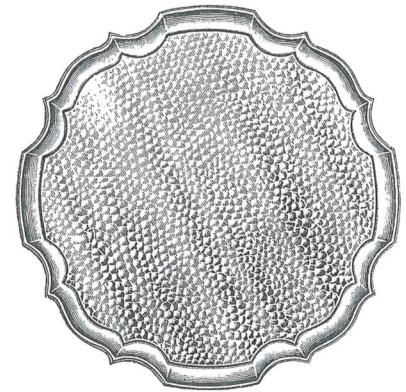


No. W 1971

OBLONG TRAY. 16 in .. 53/- 18 in. .. 66/-

TRADE  MARK

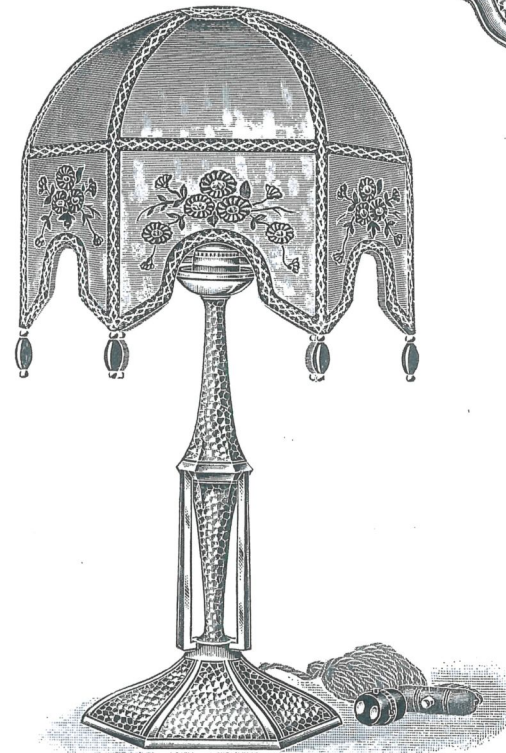
CORNISH PEWTER WARE.



No. W 1888

WAITERS.

8	10	12 in.
8/6	13/6	16/6



No. W 1952

ELECTRIC LAMP.

Electric Lamp, 12 in. ... .. 56/-  
Coloured Parchment Washable Shade .. 24/-

Complete .. 80/-

TRADE  MARK

CORNISH PEWTER WARE.



No. W 1882/1  
BEER MUG.  
1/2 pint .. 6/-  
1 pint .. 7/- each.



No. W 1902  
LIQUEUR SET.  
45/- complete.  
Waiter, 8 1/2 in. .. 12/- each.  
Tots .. 5/6 "



No. W 1942  
BEER TANKARD.  
1/2 pint .. 18/6  
1 pint .. 21/- each



SWISS WINE  
CHANNES.



No. W. 1858  
VALAISANNE CHANNES.  
1 .. 24/-  
2 .. 30/-  
3 .. 35/-  
4 .. 40/-  
5 half-pints. .. 45/- each.

No. W 1857  
VAUDOISIANNE CHANNES.  
1 .. 23/6  
2 .. 29/6  
3 .. 36/-  
4 .. 39/6  
5 half-pints. .. 44/- each.

TRADE  MARK

CORNISH PEWTER WARE.



No. W 1820 P  
LEMONADE OR ICED WATER SET.  
Jug, six Beakers and Tray.  
Hammered .. 127/- complete.  
Plain .. 89/- "



No W 1852 P  
BEER MUG



No. W 1850  
BEER MUG.  
1 pint.  
Hammered .. 19/6 each  
Plain .. 15/- "



No. W 1851  
BEER MUG.  
1 pint.  
Hammered .. 22/6 each  
Plain .. 16/6 "

TRADE  MARK



CORNISH PEWTER WARE.



PEPPER.

Hammered .. 8/6 each.  
Plain .. 6/- "



No. W 1836

MUSTARD.

11/- each.  
8/6 "



SALT.

17/- per pair  
12/- "



No. W 1835

MUSTARD.

Hammered .. 7/- each.  
Plain .. 6/- "



SALT.

15/- per pair  
12/- "



No. W 1839

SERVIETTE RINGS.

Hammered .. 3/- each.  
Plain .. 2/- "

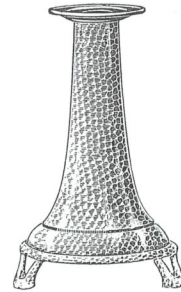


No. W 1838

3/- each.  
2/- "

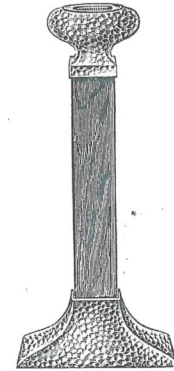
TRADE  MARK

CORNISH PEWTER WARE.



No. W 1826

6 1/4 in.  
Hammered .. 33/- per pair.  
Plain .. 21/- "



No. W 1829

8 1/2 in.  
Square Rosewood Pillar.  
Hammered .. 40/- per pair.  
Plain .. 28/- "  
Square Oak Pillar, No. W 1829/1  
Same prices.

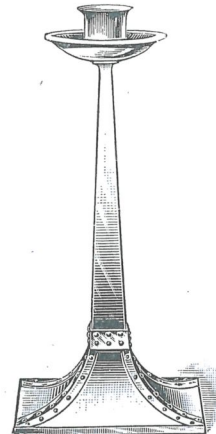
CANDLESTICKS.



No. W 1825

3 1/4 in.  
Hammered .. 33/- per pair.  
Plain .. 22/- "

CANDLESTICKS.



No. W 1830 P

9 12 in.  
Hammered .. 42/- 62/- per pair.  
Plain .. 33/- 48/- "

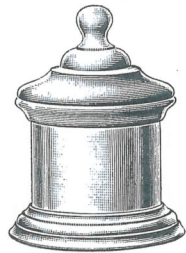


No. W 1828

9 1/2 in.  
Jacobean Oak Pillar.  
Hammered .. 30/- per pair.  
Plain .. 24/- "

TRADE  MARK

CORNISH PEWTER WARE.



No. W 1832 P

TOBACCO BOX.

Hammered .. 13/6 each.  
Plain .. .. 9/- "



No. W 1815

FERNPOT.

6 1/2 in. dia.  
Hammered .. 21/6 each.  
Plain .. 14/6 "



No. W 1890  
ROSE BOWL.

5 in. dia.  
Hammered .. 30/- each. Net, 5/- each.  
Plain .. 23/- " " 5/- "



No. W 1818

FERNPOT.

6 3/8 in. dia.  
Hammered .. 20/- each.  
Plain .. 15/- "

JAMES DIXON & SONS LTD.,  
SHEFFIELD.

TRADE  MARK

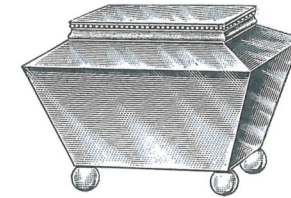
CORNISH PEWTER WARE.



No. W 1817

FERNPOT.

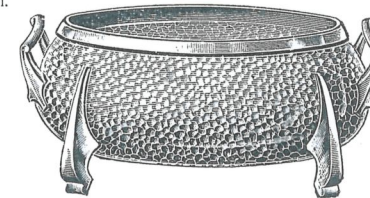
5 1/2 in. dia.  
Hammered .. 24/- each.  
Plain .. 16/- "



No. W 1833 P

TEA CADDY.

2 4 6 oz.  
Hammered .. 33/- 39/- 46/- each.  
Plain .. 25/- 30/- 36/- "



No. W 1874

ROSE BOWL.

9 in.  
Hammered .. 49/- each.  
Plain .. 39/- "



No. W 1819

FERNPOT.

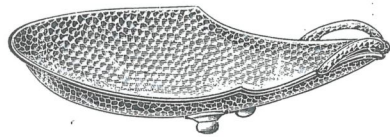
6 in. dia.  
Hammered .. 35/- each.  
Plain .. 24/- "

JAMES DIXON & SONS LTD.,  
SHEFFIELD.

TRADE  MARK

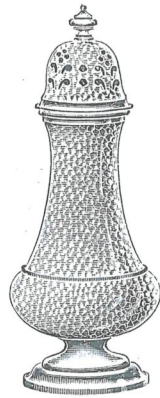


CORNISH PEWTER WARE.



No. W 1870  
FRUIT DISH.

10 in.  
Hammered .. .. 29/6 each.  
Plain .. .. 20/- "



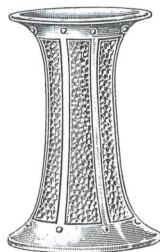
No. W 1822  
SUGAR DREDGER.

Hammered .. 18/- each  
Plain .. .. 14/6 "



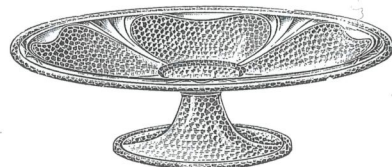
No. W 1860  
FLOWER VASE.

7 9 in.  
Hammered .. .. 19/- 25/6 each.  
Plain .. .. 14/6 16/- "



No. W 1862  
FLOWER VASE.

6 in.  
Hammered .. .. 17/- each.  
Plain .. .. 10/6 "



No. W 1872  
TAZZA

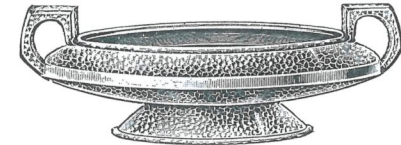
9 1/2 in. dia., 3 in. high.  
Hammered .. .. 44/- each.  
Plain .. .. 24/- "

CORNISH PEWTER WARE.



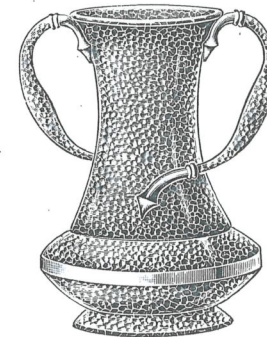
No. W 1823  
SUGAR DREDGER.

Hammered .. 17/6 each  
Plain .. .. 14/- "



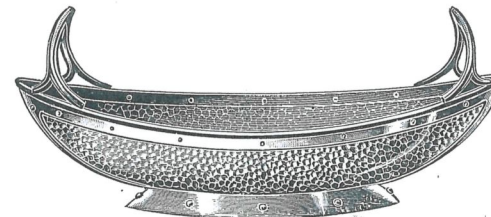
No. W 1873  
FRUIT BOWL.

9 in.  
Hammered .. 42/- each.  
Plain .. .. 30/- "



No. W 1863  
FLOWER VASE.

8 in.  
Hammered .. 44/- each.  
Plain .. .. 27/- "



No. W 1899  
FRUIT OR CAKE BASKET.

12 in.  
Hammered .. 48/- each.  
Plain .. .. 34/- "



No. W 1885  
TRINKET BOX.  
Hammered .. 20/- each  
Plain .. .. 15/- "

JAMES DIXON & SONS LTD,  
SHEFFIELD.



# James Dixon & Sons Ltd.,

INCORPORATING  
Wm. HUTTON & SONS,

Cornish Place, SHEFFIELD.

---

London, Melbourne, Sydney, Lausanne, Cape Town,  
Durban, Johannesburg.

---

**MANUFACTURERS OF ALL KINDS OF  
HOLLOWARE, SPOONS & FORKS, CUTLERY.**

---

STERLING SILVER.  
ELECTRO-PLATED NICKEL SILVER.  
ELECTRO-PLATED BRITANNIA METAL.  
BEST BRITANNIA METAL.  
CORNISH PEWTER WARE.

---

“Staybrite” Stainless Spoons and Forks.  
Stainless Steel Table Cutlery.  
Cabinets, Canteens, and Case Goods.  
The “Climax” Patent Sporting Cartridge  
Loading Machine.

---

**PRESENTATION PLATE,  
SPORTING TROPHIES,  
HOTEL & RESTAURANT PLATE.**

---

SEND US YOUR ENQUIRIES.

TRADE  MARK

## “Pewtero”

The Liquid Polish specially prepared for  
Cleaning Pewter Ware.

---

---

Polishes Pewter Perfectly  
Quite Quickly.

---

---

MANUFACTURERS:

## James Dixon & Sons Ltd.,

INCORPORATING  
Wm. Hutton & Sons,

Cornish Place, SHEFFIELD,

London and Birmingham.