

6703

SOCIÉTÉ JERSIAISE



LOAN EXHIBITION
OF
ECCLESIASTICAL VESSELS
BELONGING TO THE
PARISHES OF JERSEY

BARREAU ART GALLERY
APRIL 28th and 29th, 1937

CENTRAL EUROPEAN HISTORY

RIVERSIDE, CALIFORNIA 92521-0204

DEPARTMENT OF HISTORY
UNIVERSITY OF CALIFORNIA, RIVERSIDE

Kenneth D. Barkin, Editor
Ursula Marcum, Asst. Editor
(909) 787-6492
(909) 787-5299 FAX

Dear Henk,

I am guessing that you do not have this publication in your collection of pewter publications. If you have it I will pick it up one day when I come to see you.

Ken

NOTES ON JERSEY-MADE SILVER

BY W. T. ATTENBOROUGH.

Jersey-made silver seldom bears the English hall-mark, two exceptions being the cups at St. Lawrence (1596) and St. Clement (1653). It often, however, bears a maker's mark and these have never been properly investigated. Some of the pieces, as Major Curtis points out, bear marks which resemble French provincial marks of the 18th Century. These consist of one or more shields containing the crown, fleurs-de-lys, and initials. As these marks are sometimes stamped over the English hall-mark it is fairly certain that they are the mark of the vendor and not the maker. Examples are the platters at St. Clement, St. Helier and Trinity, which may well have been introduced from France. The local maker's marks consist of a small shield containing the initials and sometimes a crown.

The mark most frequently met with is IG under a crown. This occurs on Baptismal dishes at St. Lawrence (1748) and St. Aubin (1750). A cup at St. Martin (1747). An alms (1731) dish and platter (1740) at St. Helier and the two collecting boxes at St. Aubin (1750). This has been identified with LE GALLAIS.

There was also a Jersey silversmith named JEAN GIRARD, father-in-law of Amyce de Carteret of Trinity, who lived in Rennes in 1637. His daughter gave two cups to St. John and two to Trinity and it may be that the marks on the St. John cups are his, although there is nothing to identify him.

Another family of silversmiths in both Jersey and Guernsey was HARDY. Two of the Grouville cups of 1684 bear the mark AH under a fleur-de-lys and were made by the Trésorier of the parish. Another common mark is PA with or without a crown. This is on the cups (1767, 1777), and flagons (1766) at St. Helier, also on the baptismal dish (1775) at St. Peter and may possibly be identified with the name AUBIN. The Ewer at Grouville (1781) bears the mark T.Q. probably QUESNEL. Other marks which cannot, at present, be traced are TB on a cup (1659) at St. Clement. WY on a platter (1688) at Grouville. T.D. on a platter (1677) at St. John, and P.B. (with crown) on the paten (1743) at St. Ouen. It is unfortunate that there seems to be no way of tracing these marks.

INTRODUCTORY NOTE.

This catalogue is based on Major Carey Curtis' admirable essay entitled "The Church Plate of the Deanery of Jersey," published by the Société Jersiaise in their Forty Second Annual Bulletin.

The illustrations which accompanied that article are all reproduced here. They show, in addition to the vessels now exhibited, all the other vessels owned by the Parishes of the Island.

Unfortunately it has not been possible to reproduce the various Marks impressed on many of the vessels. Most of them, therefore, have had to be described. Nor has it been possible to reproduce in their proper form the many quaint and attractive inscriptions.

It has long been the desire of many members of the Société Jersiaise to hold an Exhibition of this nature and thanks to the kindly cooperation of the Dean, the Rectors, and the Churchwardens of this Deanery, the desire has at last been gratified.

The church plate of the deanery of Jersey is, for several reasons, of extreme interest.

Throughout England the mediaeval plate was replaced by the Elizabethan communion cup with its paten cover and these it is certain were made after a prescribed pattern.

In Jersey, domestic plate was used at first to replace the ancient church vessels ; thus there is no uniformity in shape or size.

In England the cup and cover which came in with the new regime is often the only church plate a parish possesses.

In Jersey the smallest number of pieces in any parish is six, (St. Mary), and the largest sixteen, (St. Helier), and it is safe to say that nowhere in England does a rural area of twelve parishes possess anything like the quantity of church plate found

in this island. Another interesting point is that the greater part of our plate is of local manufacture : the craftsmanship of the Jersey Silversmith during the period of over 300 years being thus available for study.

The large number of communion cups is due to the fact that the wealthier families used their own special cup. The majority of these cups are of a distinctive Jersey pattern, but there is no absolute uniformity and they appear to have been made from about the end of the 16th to the beginning of the 18th century. The earliest dated specimen is at St. Clement (1594). During the 18th century other types were made, e.g. St. Helier.

A cup at St. Martin, dated 1747 is unique.

St. Ouen possesses 5 fine cups of English make and the four cups at Grouville are evidently local copies of two of these.

The four cups at St. Peter were probably the work of a French silversmith residing in the island, possibly a refugee after the revocation of the Edict of Nantes. These were originally gilt.

Only one piece of the original pre-reformation plate remains, the chalice at Trinity. This is remarkable in having an 8-lobed foot, a very rare peculiarity, the normal number being 6.

The shape of the foot dates this chalice at about 1520. It is almost certainly of local make. The stem is missing, but a fine modern reconstruction possessed by the parish shows its original appearance.

Other pieces of outstanding interest are :—

- (1) A very fine silver-gilt dish at St. Brelade. It is of Spanish origin and is much older than the date inscribed on it (1676). By its pattern and workmanship it may date from about 1450 and it is possible that it was used in the Mozarabic rite. It would be interesting to know how this fine piece of silver came to Jersey.
- (2) A beautiful Nuremberg silver gilt cup at St. Ouen given by Gedéon de Carteret in 1620. Date about 1550.
- (3) The bowls, four at St. Brelade, and two at St. Mary, are probably mazer bowls made locally during the first half of the 16th century. Two show traces of enamel in the middle of the bowl and are of fine workmanship.

- (4) Three highly ornamented dishes, one at St. Peter, one at St. John and one at St. Lawrence. These are comfit dishes.
- (5) The various baptismal dishes which replaced the fonts removed from the churches at the reformation, are mostly of local make. One of these, at St. Peter, was missing from the church for many years. It was bought by a local jeweller in a badly damaged state and, after being repaired, was repurchased by the parish.
- (6) The various platters which did service for patens. Many of these are pieces of domestic plate.
- (7) The flagons are of various patterns. The large flagon at St. Ouen is dated 1699. It is a magnificent piece of plate and weighs 104 oz.

The Elizabeth Castle Flagon has the London hall mark of 1608.

St. Brelade has a fine modern flagon.

- (8) The four collecting jugs, 2 at St. Brelade and 2 at St. Aubin. The latter are of local make and were given in 1750. Other parishes possess jugs of a similar pattern but are not made of silver. These seem to be peculiar to Jersey.
- (9) Old patens are rare and exist at St. Ouen (1743), St. Saviour (1740) given by Falle the historian, and Elizabeth Castle (1621). This last was missing for a time and was found in the armourer's shop, full of nails.

The oldest hall-marked piece is a cup at St. Lawrence (1595). A cup at St. Clement bears the extremely rare Commonwealth hall mark of 1653.

The finest group of plate is at St. Ouen.

I.G. and P.A. are the marks of the local makers which most frequently occur.

Though each one of the exhibits has a merit which will be appreciated by the connoisseur, there are in addition to the items already referred to, at least seven others which will arouse the interest of all students of Jersey history. These are :—

- (1) The Baptismal Dish presented to the Parish of St. Helier in 1686 by Lieut. Bailiff Ph. Le Geyt, the Commentator of the Laws and Customs of Jersey.
- (2) The cup of 1659, St. Clement. The Daniel Dumaresq of the inscription was a Page to Sir Walter Raleigh.

- (3) St. Martin. The Cup bequeathed by Lorrans Baudains, (1545-1611), the educationalist whose bequests still assist poor students.
 - (4) Gedéon de Carteret's Cup, St. Ouen. Gedéon's death during the first siege of Elizabeth Castle was one of the local tragedies of the Civil War. Chevalier gives a moving description of it in his Journal. July 29th, 1643.
 - (5) Sir George de Carteret's Cups, St. Ouen. 1638. Sir George, Jersey's greatest man of action, the hero of the defence of the island in 1651, received as a reward for his fidelity to the King a fief in North America to which Charles himself gave the name of New Jersey.
 - (6, 7 and 8) The Flagon, Chalice and Paten given by Sir Thomas Jermyn, Governor of Jersey from 1631 to 1643, for the use of the garrisons of Mont Orgueil and Elizabeth Castles.
-

SPECIAL NOTE.—In the following list, the numbers attached to each exhibit corresponds with the number given in Major Carey Curtis' essay.

ST. BRELADE.

1. BOWL. Diameter, seven inches. No marks.
 Inscription round rim : DON DE THOMAS SELLE F G POUR ST. BRELADE.
 In the centre of the bowl there is a medallion incised with a shield and the letters P.S.B. (Paroisse de St. Brelade) with remains of enamel.
Note : Thomas Seale was Constable of St. Brelade from 1621 to 1628.
2. BOWL. Diameter, seven inches. No marks.
 Inscribed, POUR LA PAROISSE DE SAINT BRELADE M VI C XVI
 JEAN SESLE CONNESTABLE.
 Tudor Rose on a medallion in the centre of the bowl.
5. BAPTISMAL DISH. Diameter, twelve inches.
 London Hall-mark 1808. Maker's mark is the initials of Peter and William Bateman.
 Inscribed on the rim : Fonds de Batême a l'usage de la Paroisse de St. Brelade, 1808. G. Bertram, Recteur. N. Le Bas & F. Hocquard, Surveillans.
6. DISH. Diameter, nine and a quarter inches. Bears three makers' marks, probably Spanish.
 Inscribed on the edge of the rim : Ce plat Apartien A l'Eglise De St. Brelade 1676.
7. FLAGON. London Hall-mark 1811.
 Inscription on the body of the vessel : Achete par le Tresor pour l'usage de la Ste Cene. G. Bertram, A.M. Recteur. N. Le Bas, F. Hocquard, Surveillans. Anno Domini 1811.
- 8 & 9. TWO ALMS BOXES. Height, eight inches.
 London Hall-mark, 1859. Maker's mark GR EB
 Inscribed on the face of one : Don du Révd. Edouard Falle, M.A. Recteur, a l'Eglise Paroissiale de St. Brelade. A.D. 1860.
 And on the other : Don d'Anne Balleine, (Veuve de Ph. Jn. Le Feuvre)—
 A l'Eglise Paroissiale de St. Brelade. A.D. 1860.

ST. CLEMENT.

1. CUP. Height, seven and a half inches.
Mark TB probably of local origin.
Inscription on the body of the cup : Don de Dlle Elizabeth de Carteret veuve de Daniel Dv Maresq Sr. de Sammares a la Paroisse de St. Clemant 1659.
2. CUP. Height, five and a quarter inches. No marks.
Inscription on the bowl : Cete coupe appartient ala Paroise de Sainct Clement 1594.
3. CUP. Height, six inches. London Hall-mark, 1653.
Inscribed on rim : S.D.C. Cette Coupe appartient a la Paroisse de St. Clement.
Inscribed under base : Damelle E. D. M. nasquit le 1 ior de Jvin 1628, et movrvt le xie d'Avst. 1638.
4. CUP. Height, five and a half inches. No marks.
Inscription on the rim of the bowl : Cete coupe appartient a La Paroisse de Saint Clement 1624.
7. PLATTER. Diameter, fourteen inches. Two Maker's marks.
Inscription under the rim : Don de Iean Tovzel Fils Gorge a Leglise St. Clement 1658.
8. BAPTISMAL DISH. Diameter, sixteen inches. No marks.
Inscription on the rim : Fond pour le Baptesme donné a l'Eglise de S. Clement par Helier Dumaresq Gentl. 1702. rome Auril.
9. PATEN. Diameter, five inches. Maker's mark J R. London Hall-mark 1861.
Inscription on the face : Agnus Dei qui tollis peccata mundi da nobis tuam pacem.

ST. MARTIN OF GROUVILLE.

- 1 & 2. TWO CUPS. Height, eight and a half inches. Mark AH under a fleur de lys.
Inscription round the rims of the bowls : Le Threr. de Groul. ma produitte, Mr. Jos. Pallot estant Ministre et Charle Hardy, G. Contable à Pasque 1684.
6. TWO HANDLED BOWL. Height, three inches. Diameter, five and a half inches. Mark, J W & Co. Probably electroplate.
No inscription.

7. EWER. Height, twelve inches. Mark JQ.
 Inscription under the base : Aiguiere a la Paroisse de Grouville fait pour la
 Communion de Noel 1781. Clemt. Dumaresq, Thoms. Aubin, Surveillants.
 73 onces.
9. PLATTER. Diameter, fifteen inches. Mark WY.
 Inscription on the rim : Done povr l'Usage de l'Eglise D'Grouville en le Isle
 de Jersey. 1688.

ST. HELIER.

- 1— 4. FOUR CUPS. Height, seven and a half inches. Mark, P.A.
 Inscribed round the bowl : 1 & 2. Pour la Paroisse de St. Helier 1777.
 3 & 4. Don de Monsr. Jean Herault, fils
 Abraham, a la Paroisse de St. Helier ce 18me
 Avl. 1767.
7. FLAGON. Height, twelve inches. Mark : PA, under a crown.
 Inscription round the body : Don de Jacqs. Lempriere Escr. a L'Eglise de
 St. Helier le 12me Septbre. 1766. 71 once.
Note. Jacques Lempriere was Constable of St. Helier 1744-5—1754. Jurat,
 1754-70.
8. FLAGON. Height, twelve inches. Mark as on No. 7.
 Inscribed :—Don a L'Eglise de St. Helier ce 12me Septbre 1766 par Mons.
 Jean Herault fils Abraham fils Abraham fils Isaac, frere d'Abraham Herault Gent.
 donateur de deux Coupes a la dte. Eglise. L'An 1639.
 73 once.
9. PLATTER. Diameter, nineteen inches. Three marks.
 Inscription on the rim : Donne par Ph Le Geyt gent fils de Iean a l'Vsage de la
 Ste Cene en la Paroisse de St. Helier isle de Jersey 1704. 78 on.
Note. Ph. Le Geyt was Procureur General 1709-20, and later Lt. Bailiff and
 Jurat.
10. BAPTISMAL DISH. Height fifteen inches.
 London Hall-mark 1685. Maker's mark SN within a heart.
 Inscription round the rim : Fond povr le Baptesme donné a l'Eglise de St.
 Helier par Ph. Le Geyt, Gent, Lievt Bailly, 1686.
Note. Ph. Le Geyt : b. 1635, d. 1716. Greffier, Jurat, Lt. Bailiff and
 Juge-délégué. Commentator on the Laws and Customs of Jersey.

11. ALMS DISH. Diameter, twelve inches. Mark I.G. under a crown.
 Inscription inside the bowl : Bassin donne par Fr. Le Coûteur A.M. Recteur de la Paroisse de S. Helier a Jersey a cette Eglise pour recevoir Les aumones et oblations faites es Communions Octobre 10me 1731.
12. PLATTER. Diameter, fifteen inches. Mark as in No. 11.
 Inscription on the rim : Donne a l'Eglise de St. Helier par Iean Maugier fils Helier de la dite Paroisse en l'An 1740.
 Three cherubs are engraved under the rim.
15. PATEN. Diameter, four and a half inches.
 London Hall-mark 1824. Maker's mark W.B. (William Bateman).
 Inscription round the rim : Don d'Edd. Dorey, Chef Collecteur, a La Paroisse de St. Helier 20 Avril 1826.
- Also a PEWTER PLATTER. Marks on the back imitate London Hall-marks.
 Inscription on the rim : Don de Mr. Iean de Ste. Croix a la Paroisse de St. Helier 1744.

ST. JOHN.

- 1—3. 3 CUPS. Height, six inches. No marks.
 Inscription round the rims of the bowls :—
 Two : Pour la Parroisse de St. Jean 1633.
 One : Pour la Parroisse de St. Jean 1634.
8. DISH. Diameter, ten and a half inches. No marks. Probably French, about 1725.
 Inscription on the rim : Pour l'usage de la Communion de St. Jean, M.D.
 Also the following vessels in Pewter :—
 2 JUGS.
 Stamped on the lids : (1) Donne a Leglise de Sain Iean 1718.
 (2) Povr la Parroisse de St. Ian.

ST. LAWRENCE.

- 1—4. FOUR CUPS. Height, six inches.
 No. 1. London Hall-mark, 1598. Maker's mark, E. Nos. 2, 3 and 4, no mark.
 Inscription round the rims of the bowls : Povr la Paroisse de St. Lavrans 1634.



ST. BRELADE.



ST. CLEMENT.



GROUVILLE.



ST. HELIER.



ST. MARTIN.



ST. JOHN.



ST. LAWRENCE.



ST. LAWRENCE. PEWTER.



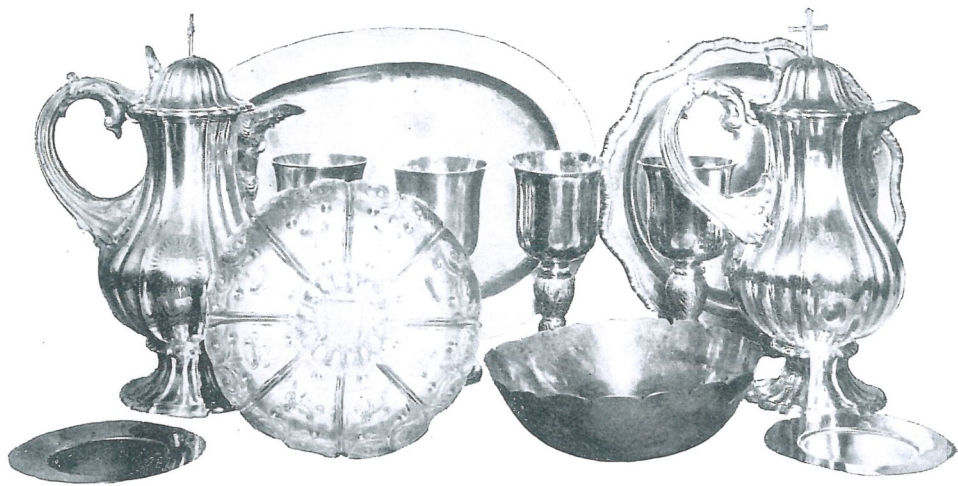
ST. MARY.



ST. OUEN.



TRINITY.



ST. PETER.



ST. SAVIOUR.



GARRISON PLATE.



ST. AUBIN.

5. DISH, (damaged). Diameter originally eight and a half inches. Two marks.
 Inscribed on the central medallion : Donne par Jean Baillehache a la P. St. Lorant le 7 Iovr de Mars 1646.
Note. Jean Bailhache was constable of St. Lawrence 1743-51 ; 1660-63.
6. BAPTISMAL DISH. Diameter, fourteen inches. Mark, I.G. under a crown.
 Inscription on the rim : Donne a l'Eglise de St. Lavrens par Iean le Hardy Escr. Procurevr dv Roy nagvere de la dite Paroisse lan 1748.
Note. Jean Le Hardy was Constable of St. Lawrence 1721-29. Procureur Général 1729-51.
- 7 & 8. TWO PLATTERS. Diameter, eleven inches.
 Two marks and "Odiot." French made. Rare.
 Inscription on rims : Don du Reverend Thomas Orange (Recteur) et de Demoiselle Esther Jeanne Luce, sa femme, à l'Eglise Paroissiale de St. Laurens, Ile de Jersey. Pâques 1884.
11. FLAGON. Height, thirteen and a half inches.
 London Hall-mark, 1843. Maker's marks CR. GS.
 Inscribed as in No. 7 and 8.
- Also the following Pewter Vessels.
- 1 Jug. Height, six inches. Stamped on the handle : St. Lorain.
 2 Jugs. Height, ten inches. Stamped under the lids : I D S X and on the handles : St. Lorains.
- Note.* IDSX possibly refers to a Jean de Ste. Croix, who gave a platter to St. Helier's Church in 1744.
- 1 Platter. Diameter, one foot. Stamped on the back : St. Lavrens.
 2 Platters. Diameters, eight inches. Stamped as in the last.
 1 Copper or Brass Alms Box. Stamped : St. LR.

ST. MARTIN.

1. CUP. Height, six inches. No marks.
 Inscription round the edge of the bowl : Povr La Paroisse de Saint Martin.
2. CUP. Height, five inches. No marks or inscription.
3. CUP. Height, five and a half inches. No marks.
 Engraved on the rim of the bowl with a band and three drop patterns, and inscribed : Lorrans Baudains.
Note. Laurens Baudains was the founder of local schools and originator of the "Don Baudains" Born about 1545. Died, 1611.

4. CUP. Height, seven and a half inches. Mark, I.G. under a crown.
Inscription round the bowl : Don de Mr. Abraham Horman a l'Eglise de St. Martin a Jersey 1747.
8. FLAGON. Height, ten inches. London Hall-mark 1877. Maker's mark, RH.
Inscription on the body : A l'Eglise de St. Martin 1877. Don de Dlle. A. M. Vibert en Mémoire du Rev. Charles Le Touzel, son Grandpere, autrefois Recteur.
Note. Charles Le Touzel, b. 1744, d. 1818. Rector 1799-1818.

ST. MARY.

2. CUP. Height, five and a half inches. No marks or inscription.
Scatched under the base : Cene.
3. BOWL ON FOOT. Diameter, six and a half inches. No marks. Rudely made and badly repaired.
Inscription on the foot of the bowl : Povr Marie.
6. FLAGON. Height, eleven inches. London Hall-mark, 1855. Maker's mark : CB.
Inscribed on the front : Présenté a La Paroisse de St. Marie par Madame S. M. Vibert et autres amis 1855.

ST. OUEN.

1. CUP (formerly gilt). Six and three quarters inches high.
Marks : Eagle and N. (Nuremburg).
Inscription round the rim : Don de Mr. Gedéon de Carteret 4e fils de St. Ouen en son vivant vicomte de Ierse pour lusage de la Sainte Cene en la Parroise de St. Ouen 1620.
Note. Gedéon de Carteret died in Elizabeth Castle in 1643. See Jean Chevalier's Journal.

- 2 & 3. TWO CUPS. Height, nine inches. London Hall-mark, 1638. Maker's mark : Anchor flanked by D and G.

Inscription on the bowl : Pour la Paroisse de St. Ouen. du don de Capitaine George de Carteret, Admiral des nauires de Sa Mat. en lexpediaon Contre les Turgs sur la Coste de Barbarie au retour de son 2e uoyage. An. 1638.

Arms of de Carteret.

Note. This is the famous Sir George de Carteret, Bailiff and Lt. Governor. Defender of Elizabeth Castle 1651.

4. ONE CUP. Height, eight and a half inches.

London Hall-mark, 1624. Maker's mark : RS above a heart.

6. CUP. Height, seven and a quarter inches.

London Hall-mark, 1640. Maker's mark : IB over a crescent.

Inscription on the rim of the bowl : Don de Edouard Vautier. Also 1640 E.V.

7. CUP (altered to form a FLAGON). Height, eight and a quarter inches.

London Hall-mark, 1635. Maker's mark : FI over an asterisk.

Inscription on the bowl : Don de François De Carteret Esqr. a l'eglise de St. Ouen 1662. Arms, supporters and crest of de Carteret.

8. FLAGON. Height, twelve inches.

London Hall-mark, date indistinct. Maker's mark RL over a fleur de lys.

Inscription round the neck : Don De Demlle Anne de Carterett femme D'Andre Willan Jents De Lundres por Lusage du Vin de la Ste Cene En La paroisse De St Ouen Jersey La Quelle Deceda Le 9 Jan. 1699 Sud Lieu de Lundres.

104 oz. 10 dtt. Arms of Johnson, impaling de Carteret.

9. PLATTER. Diameter, sixteen inches.

London Hall-mark, 1638. Maker's mark : ES

Inscription on the rim : Don fait à La Paroisse de St. Oven par Mr. Helier Le Montais et son fils aisé Mr. Elie Le Montais.

10. PLATTER. Diameter, thirteen and a half inches.

London Hall-mark, 1676. Maker's mark : IN over a flower, in heart.

No inscription.

ST. PETER.

- 1—3. THREE CUPS. Height, seven inches. No marks.
Inscription on the bowls : Pour servir a l'Eglise de St. Pierre.
5. FLAGON. Height, twelve inches.
London Hall-mark, 1833. Maker's mark J.H.
Inscription on the body : Don de Francois Ballaine a l'Eglise de St. Pierre en l'Annee 1833. Philippe Filleul, Recteur. Jean Balleine, Philippe Le Feuvre, Surveillants.
7. OVAL PLATTER. Fifteen and a half inches by eleven and a half inches.
London Hall-mark, 1646. Maker's mark IM over a lion (?)
The arms of de Carteret on the rim.
8. DISH. Diameter, eight and a half inches. No marks.
Inscription on body : Pour Leau du Bapteme en la paroisse de St. Pierre trente livres st. donnés par Benjamin de Carteret gentil homme 1671.
And on the other side of the bowl : Cette pièce, qu'il y a tout lieu de croire etre celle mentionnée dans les inventaires de 1728 et de 1831 et disparue depuis a été donnée à l'Eglise de St. Pierre le 30 Janvier 1909, par certains des paroissiens, François de Gruchy, Recteur. S. J. Le Marquand et F. E. Luce, Surveillants.
9. BAPTISMAL DISH. Diameter, eleven inches. Mark : a crown over P.A.
Inscription on the back : Fonts de Batême pour L'usage de la Paroisse de St. Pierre, L'An 1775.
10. DISH. Diameter, eight and a quarter inches.
London Hall-mark etc. indistinct.

THE HOLY TRINITY.

1. CHALICE (bowl and base only). Diameter of bowl, four and a quarter inches. No marks or inscription.
2. CUP. Height, six inches. No marks.
Inscription on the edge of the bowl : Ch Maret fils Iean.
Note. Charles Maret was Receiver General in 1643, 1655-60, 1666.

3. CUP. Height, six inches. No marks.
Inscription on the edge of the bowl : Don de Mr. Piere Le Breton a Leglise de la Trinite 1659.
4. CUP. Height, five and a half inches. No marks.
Inscription on the bowl : Don de Ph. Pinel a l'Eglise de la Trinite 1683.
Note. Philippe Pinel was Constable of Trinity 1682-1688, 9.
5. CUP. Height, five inches. No marks.
Inscription on the edge of the bowl : A R D, I N G : Don d'Anne Rondel a l'Eglise de la Trinite pour l'Usage de la Communion 1762.
6. ONE CUP. Height, six inches. No marks.
Inscription under the bases : A l'Eglise de la Trinite with a monogram MGG and the Arms of de Carteret impaling de St. Martin.
9. PLATTER. Diameter, fourteen and a half inches. Two marks.
Inscription under the rim : Don fait a Leglise de La Paroisse de La Trinite par Honorable Dame Ieanne Herault douairiere de la Maison et Seigneurie de La Trinite en Lille de Iersey enterree Lonz de Mars 1654.
In centre, Arms of de Carteret impaling de St. Martin.
11. CHALICE. Height, eight and a quarter inches. A restoration of No. 1.
Presented by Athelstan Riley, Esq., Seigneur de la Trinité.

ST. SAUVEUR.

- 1 & 2. TWO CUPS. Height : eight inches.
Inscribed on bowl : Pour servir a La Sainte Cene en l'Eglise de St. Sauveur a Iersey. Donné par Philippe Falle, cy devant Recteur de cette Eglise.
Philippe Falle, the Historian of Jersey, was Rector of St. Saviour, 1690-1706.
- 3 & 4. TWO CUPS. Height : eight inches.
Inscribed : In usum Eccl. S.S. Saluatoris Joh. Poingdexter Ed. F. D.D.
5. PATEN ON FOOT. Diameter : eight und a half inches.
Inscription as No. 1.

- 6 & 7. TWO ALMS DISHES. Diameter : ten and a half inches.
 Inscribed : Ex dono Caroli Poingdestre Armigeri in usum Ecclessti. Salvatoris pro fidelium oblationibus in Cæna Domini 1716.
 Charles Poingdestre was Jurat 1702—1726-7, d. 1726-7.
8. PLATTER. Diameter : seventeen inches.
 Inscribed : Dv Don de Demlle. Rachel Messervy, Dame de Bagot, a l'Eglise de St. Savvevr povr l'vsage de la Ste. Cene 1700, and arms of De Bagot quartering Messervy on rim.
9. BAPTISMAL DISH. Diameter : fourteen and a half inches.
 Inscribed : Fond pour le Babtesme donné a l'Eglise de St. Sauveur par Iemes Corbet Escr. L'un des Iusticiers de L'isle de Iersey, 1718.
10. FLAGON. Height : eleven inches.
 Inscribed : Ex dono Johannis Poingdestre Armigerii nec non Jurati Coronatoris In usum Sacrosanctæ Domini Cænæ, In Ecclesia Sancti Salvatoris MDCCCVII.
11. FLAGON. Height : ten inches.
 Inscribed : D.D.D. Optimates Ecclesiæ Sancti Salvatoris, in usum Sacrosanctæ Domini Cænæ MDCCCVIII.

COMMUNION VESSELS GIVEN BY SIR THOMAS JERMYN IN 1641, FOR
 THE USE OF THE GARRISONS IN MONT ORGUEIL AND ELIZABETH
 CASTLES.

Exhibited by permission of the Officer Commanding, Royal Engineers, Jersey District.

1. CUP. No inscription.
 Shield of Arms of Sir Thomas Jermyn on the bowl. London Hall-mark of 1640. Weight 16 ozs.
2. FLAGON. No inscription.
 Shield of arms of Lord Capel on the body. London Hall-mark, 1608.
 Weight 34 ozs. 9 dwts.
3. PATEN ON FOOT. No inscription.
 Engraved under the foot with the crest of Sir Thomas Jermyn, London Hall-mark of 1621. Weight 11 ozs. 9 dwts.

ST. AUBIN.

- 1 & 2. TWO CUPS. Height, nine and a half inches.
 London Hall-mark 1749. Maker's mark T. R.G. C. (Gurney & Co.).
 Inscription on the bowl under I H S A La Chapelle en St Aubin Don de
 Thomas Pipon Ecuyer 1749.
7. PLATTER. Diameter, fifteen inches.
 London Hall-mark 1749. Maker's mark I.S. (John Swift).
 Inscription underneath: A La Chapelle en Saint Aubin, 1750.
8. BAPTISMAL DISH. Diameter, thirteen inches. Mark: I.G. under a crown.
 Inscription round the rim: Donne a La Chapelle d'Aise en St. Aubin par
 Thomas Denton un des Fondateur et Ieanne Le Bailly son epouse pour servir de
 Plat de Bateme. Iersey le 25e Mars, 1750.
- 9 & 10. TWO COLLECTING JUGS. Height, eight inches. Mark: I.G.
 under a crown.
 Inscription:
 (1) Donné a la Chapelle d'Aise en S. Aubin par Iean Le Couteur fils
 Iean, fils Iean, deux des Fondateurs de Laditte Chapelle L'An 1750.
 (2) Donne a la Chapelle d'Aise en S. Aubin par Gedeon Villeneuve fils
 Iean senr. Tous les deux Fondateurs de Laditte Chapelle L'An
 1750.
- II. COLLECTING JUG.
-