





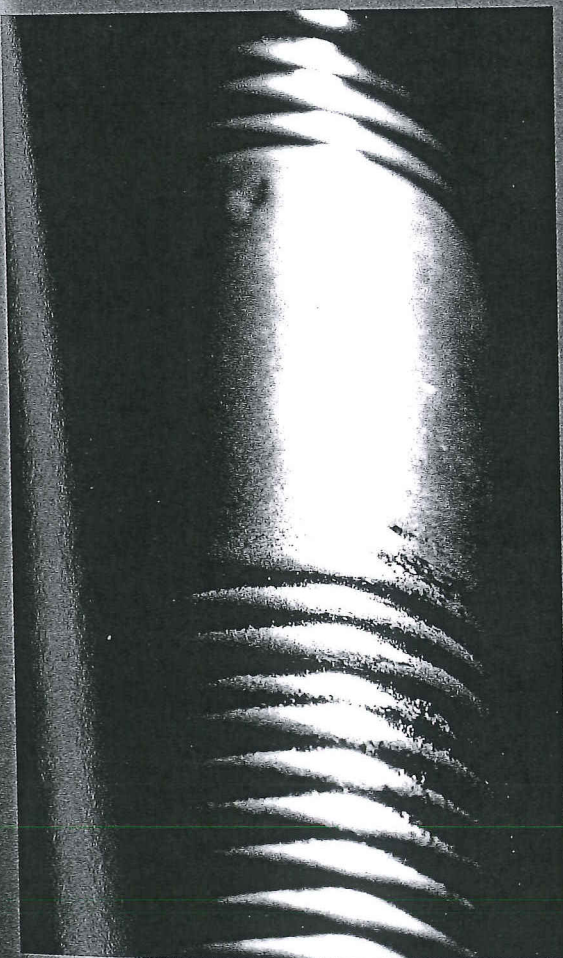


Bonhams<sup>1793</sup>

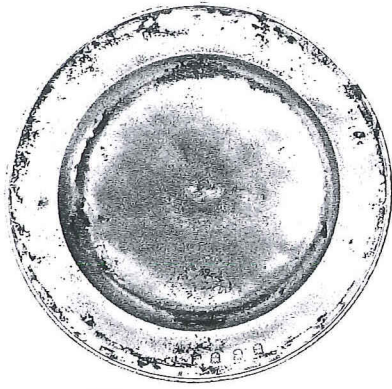
Good British Pottery  
The Oak Sale, including Pewter  
Wednesday 11 and  
Thursday 12 May 2011  
Chester



Pewter  
Thursday 12 May 2011  
at 10am  
Lots 100 - 145



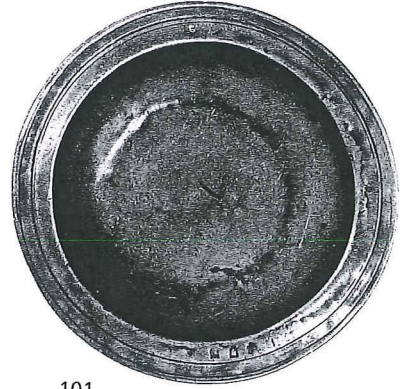




102



100



101

### Pewter

100

An early 18th Century single reed dish, West Country  
Hallmarks to rim of Joseph Giddings, (w.1710-?), (OP1858, PS3787), and  
ownership triad 'TWE', diameter 11in.  
£100 - 150

101

A late 17th Century multiple reeded bowl  
The rim bearing the hallmarks of Nehemiah Cloudesley, Leeds, (w.1689-  
1714), (PS 1762), together with unrecorded touchmark to rear, diameter  
22.5cm.  
£300 - 400

102

A late 17th Century plate  
Ownership initial 'B' to rim, hallmarks also to rim and touchmark to  
reverse of 'IB', (PS 1313, OP 5431), diameter 8 7/8in.  
£150 - 200

103

A group of spoons

To include a Queen Anne portrait split-end spoon, circa 1705, cast  
with the bust of Queen Anne and initials 'AR' within crowned scrolling  
leaves, the bowl reverse cast with foliage surround rat-tail, ownership  
initials to rear of stem end, length 17cm; together with another scroll-  
cast decorated split-end spoon, of similar date, with elongated bowl  
and traces of nature's gilding, maker's mark to rear of stem, length  
19.5cm; an acorn-knop spoon, circa 1500, maker's mark to fig-  
shaped bowl, length 16cm; and a 16th Century slip-top spoon, with  
hexagonal stem, maker's mark of NB (w.1550-?), (OP5445, PS1339) to  
fig-shaped bowl, length 15.8cm, (4)  
£300 - 400

104\*

An 18th Century Swiss 'Schenkenne'

The body of shouldered single-fillet bulbous form, the heart-shaped lid  
bearing an unidentified touch, 'FIN' label and engraved with the initials  
'H.H.O.N.', twin acorn thumbpiece, height 30cm  
£100 - 150



103

Literature: P. Hornsby, *Pewter of the Western World 1600-1850*,  
illustrates a similar example, p. 217, pl. 721.





105



106



107

105

A half-pint O.E.W.S. double-volute baluster measure, circa 1750  
The plain baluster body with S-shaped handle with ball terminal and diamond attachment, the flat-lid with double incised lines, double-volute thumbpiece with fleur-de-lys attachment, *height 12.5cm.*  
£150 - 200

106

A gill O.E.W.S. double-volute baluster measure, circa 1750  
The plain body with S-shaped handle with ball terminal and diamond attachment, the flat-lid with double incised lines, double-volute thumbpiece with fleur-de-lys attachment, *height 10.3cm.*  
£150 - 200

107

A Newcastle lidless Imperial gill baluster measure, circa 1830  
The body with three bands of double incised lines, single-curve handle with ball terminal, mark to collar, *height 8.8cm.*  
£100 - 150

108

A 19th Century lidded bulbous measure, Edinburgh  
With dome lid and Edinburgh type shell thumbpiece, collar stamped half-pint, *height 11.5cm*; a half-gill example, *height 8.5cm*; a Glasgow half-pint example, *height 11.8cm*; together with a half-gill example with numerous verification marks to collar, *height 8cm.*, (4)  
£140 - 180

109

A mid-17th Century bossed dish  
With narrow plain rim, deep booge and raised boss to centre, *diameter 13 $\frac{3}{4}$ in.*  
£150 - 200

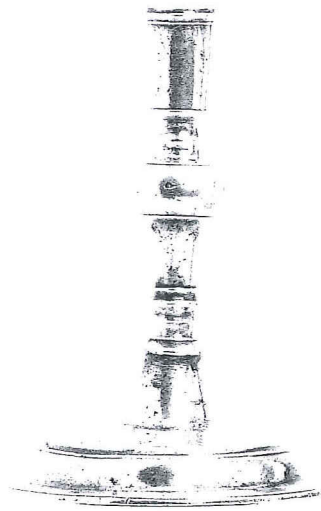


109

Provenance: Dr R. Homer Collection. Sold in these rooms 14 May, 2009, lot 259.

The shape and proportions of this dish are similar to commemorative dishes inset with an enamelled boss bearing the Royal Stuart Coat of Arms and the initials CR.  
Dr Homer was apparently told that at one stage traces of a touchmark with fleur-de-lys in a beaded circle had been visible.

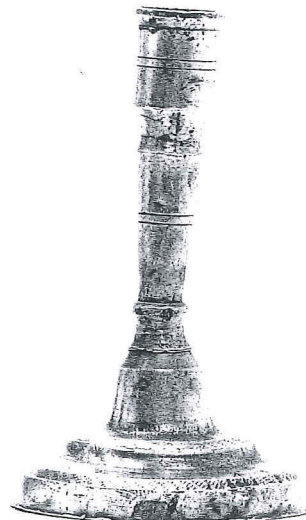




110



111



112

110

An early 18th Century candlestick, European

The tapering socket with ribbed collar raised on an inverted baluster stem with dome base, crown rose touchmark incorporating the initials IVM to underside, *height 18cm.*

£200 - 300

111

An 18th Century Scottish Communion cup

With flared bowl, baluster stem and dome foot, *height 24.7cm, diameter of cup 11.3cm.*

£100 - 150

112

An early 19th Century candlestick

In two parts, the ring incised socket with flared rim and conforming tapering stem, screw-threaded lower section with stepped bell-shaped base, geometric decorated to canted base angles and lower stem, *height 18.5cm.*

£200 - 300

113

A miscellaneous group of pewter

To include an early 19th century quart ale lidless jug, with two broad fillets to body, grated spout and C-scroll overlap handle, stamped 'CORNHILL LONDON' inside base, possibly a member of the Spackman family, *height 15cm*; together with a 19th century quart lidded jug by Armitages & Standish, Sheffield, (w.1829-?), (PS307); a small Dutch dome lidded chocolate pot with brass spout, cup salts, pepperettes, and two sifters, (10)

£150 - 200

114

A group of four 19th Century Irish haystack measures

Pint, half-pint, noggin and half-noggin capacities, three with touchmarks of Joseph Austen & Son, (w.1823-1846), (OP153, PS10), to underside, the half-pint example with touchmark of Munster Iron Company, Cork, (w.1870-1965), (OP3334, PS11), the half-pint and half-noggin example with verification marks, (4)

£500 - 700

115\*

An English porringer, circa 1700

The 'booged' bowl with bossed well, single 'coronet' ear, *diameter 13.5cm*

£100 - 150

116

A 17th Century broad rim dish

Wigan

Hallmarks to plain rim and touchmark to rear of James Ford II, Wigan, (w.1664-1693), (PS 3440, OP 1717b), *diameter 16in, rim 2 7/8in., (37%)*

£450 - 550

117

An early 18th Century triple reed charger, circa 1700

Norwich

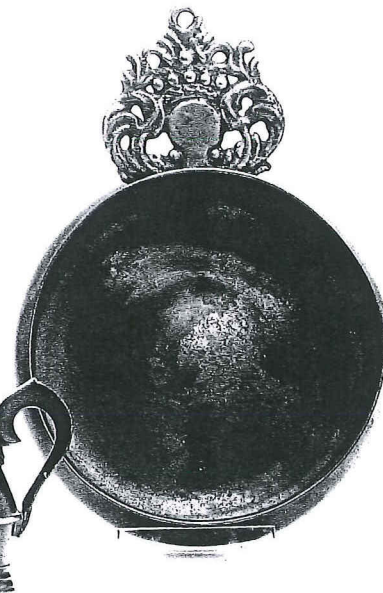
Hallmarks to rim and touchmarks to rear of Christopher Berry, (w.1701-?), (PS696), and stamped ownership initials 'EF', *diameter 18 1/2in.*

£100 - 200





114



115

118

A Stuart dome-lidded flagon, circa 1690

Wigan

Touchmark inside base of Adam Bankes IV, Wigan, (w.1671-1716), (OP222A, PS66), plain straight-sided body, dome lid with front denticulations, bombé thumbpiece and single-curve handle, height 28cm.

£800 - 1,000

119\*

A small 17th Century Beefeater flagon, circa 1670

The tapering drum with triple line incised decoration and ovolu moulded flat base, the lid with twin cusped thumbpiece, S-shaped handle, lid and handle both stamped 'B' within a wavy border, height 24.5cm

£1,000 - 1,500

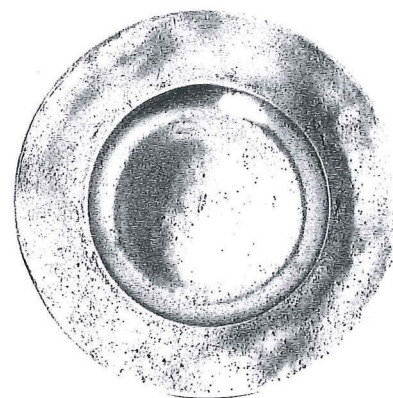
Provenance: A written inscription on the base of the flagon reports it to be from '1673 Besford (Worcs.) St. Peters Church'.

120

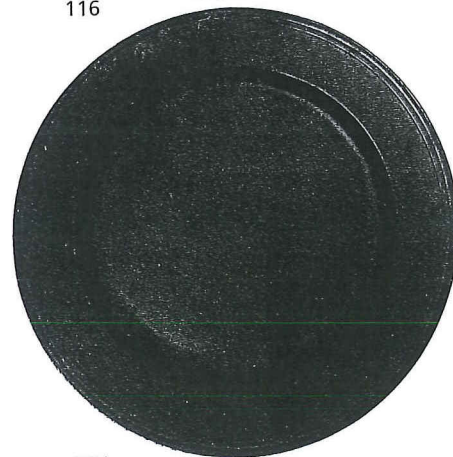
A group of 19th Century measures

To include: straight-sided, tulip-shaped, U-shaped and spouted examples, quart to gill capacities, some verification and maker's marks, together with a Britannia Metal vessel of Scottish pot belly form, (16)

£100 - 150



116



117





118



119

121

A Scots pint tappit hen, circa 1800

Of typical shouldered form, erect thumbpiece, single-curve handle, ownership initials 'CT' to lid, plow mark inside body, height 28cm, £400 - 600

122

A mid-18th Century Normandy flagon

The body of shouldered form, heart-shaped lid, twin acorn thumbpiece and single-curve handle, height 20.5cm. £200 - 300

123

An 18th Century Jersey pot capacity measure

Bearing touchmark John de St Croix, London, (w.1729-?), (OP1360, PS91), to underside of lid, baluster-shaped body with heart-shaped lid, twin-acorn thumbpiece and single-curve handle with strut attachment, initials A.L.B.R. to handle, height 27cm. £300 - 500

124

A group of mostly 19th Century bulbous measures

To include: three quarts, two pint and two half-pint examples; together with three quart spouted measures, various verification marks, some maker's marks. (10) £100 - 150

125

A half-gill O.E.W.S. double-volute baluster measure, circa 1750

The plain body engraved *J. Thomas*, S-shaped handle with ball terminal and diamond attachment, the flat-lid with double incised lines, double-volute thumbpiece with fleur-de-lys attachment, lid detached, height 8.3cm.

£150 - 200

126

A low two handled bowl

On incised foot ring, with two horizontal ring handles, overall width 17cm, height 5.2cm

£60 - 80

127\*

An O.E.W.S. gill double-volute baluster measure, circa 1750

With plain body, the single-curve handle with strut and diamond attachment, no marks, height 8.7cm.

£100 - 150

128

A mid 19th Century half-pint footed beaker

Of tulip shape, silver plated, touchmark inside base of *J. Warne*, the baluster leaf engraved with cartouche inscribed *G.H. Boden, 1871, Oval*, raised on a spreading foot. (Boden refers to a member of a mid/late 19th century Derbyshire cricketing family, Oval refers to the Oval Cricket Ground, Home of Surrey County Cricket Club), height 12.6cm; together with an early 19th century Britannia Metal chalice, with knopped stem on spreading foot, height 20cm. (2)

£60 - 80





121



122



123



125



126



127





129

129  
An 18th Century lidded ciborium

Probably German

Beaded knob to dome lid, bulbous body on shaped knopped stem, screw-attachment to dome foot with wavy edge, ownership initials 'GAS' engraved to foot-rim, *height 33.5cm*; together with an early 18th century chalice, again probably German, the flared bowl on a knopped stem, dome foot with gadroon decorated rim, *height 21cm*, (2)

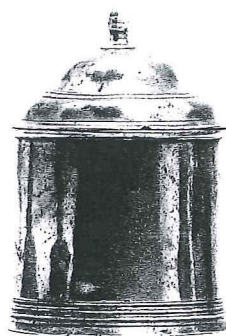
£150 - 200

130

An 18th Century lidded tobacco box

Of circular form with dome knopped lid, multiple reeding to base, *diameter 10cm, height 15cm*.

£100 - 150



130



131

131

An 18th Century double-volute pint baluster measure

The body with double incised lines, the flat-lid centred with crowned 'WR' verification mark, double-volute thumbpiece and fleur-de-lys attachment, lid detached, *height 16cm*; together with an 18th century double-volute gill baluster measure, the body with double incised lines, double-volute thumbpiece with diamond and fleur-de-lys attachment, single-curve handle with ball terminal and diamond attachment, *height 10cm*, (2)

£200 - 300

132\*

A large 18th Century Swiss spouted flagon

The plain tapering drum with flared incise line decorated base, dome lid with pineapple knob, erect thumbpiece, single-curve handle bearing the touchmark of Hans Conrad Bosshard, (w.1727-95), and townmark of Zurich, rose medallion cast inside base, *height 31.5cm*

£100 - 150





133



134



135

133\*

An 18th Century O.E.W.S. pint double volute baluster measure  
Touchmark of William Fasson, (w.1758-1800), (PS 3268), to collar,  
plain body, handle with ball terminal and diamond attachment, *height*  
*14.5cm.*

£250 - 300

134

A late 17th Century commemorative Royal wrigglework beaker  
The flared drum decorated with an oval portrait each of William  
and Mary below a scroll decorated rim and scroll surround, crowned  
touchmark to underside, *height 13.8cm*

£200 - 300

135

A small English chalice, circa 1800

The elongated cup with single fillet, raised on a knopped stem and  
spreading foot, *height 14.8cm*

£100 - 150

A chalice of similar design was sold in these rooms *The Kenneth Barkin*  
*Collection*, 13 May 2009, lot 668.

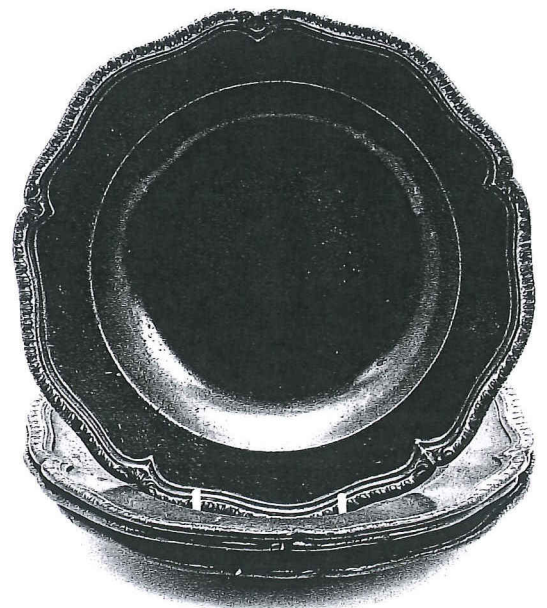
Comparative literature: *Pewter of Great Britain for Pleasure and*  
*Investment*, C. Peal, p.108, pl.76, illustrates a comparable chalice (central  
image).

136

A set of four mid-18th Century gadrooned and reeded wavy edge  
bowls

Each with five lobes, the rim engraved with a lion rampant crest,  
touchmarks to rear of Robert Patience, London, (w.1734-1776), (OP  
3549, PS 19), *diameter 9½in.* (4)

£200 - 300

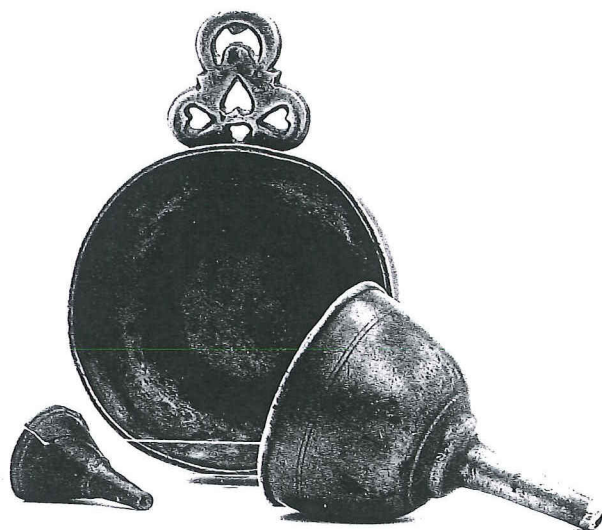


136





138



139

137\*

An 18th Century O.E.W.S. half pint double volute baluster measure  
The body with three bands of twin incised lines, the flat-lid with crowned WR mark, the handle with ball terminal and diamond attachment, *height 12.7cm.*  
£150 - 200

138

An 18th Century miniature chalice, French  
The cup with lip raised on a reel stem on a dome foot with hexagonal base, *height 8.8cm*; another similar example with knopped stem and domed circular foot, *height 8.8cm*; together with a 17th Century Dutch miniature footed wine cup or toy chalice, the large bowl on a baluster beaded stem on spreading foot, with internal beaded edge, *height 7.3cm (3)*  
£180 - 220

Comparative literature: A. North, *Pewter at the Victoria and Albert Museum*, p.167, pl. 253/254, illustrates a comparable French chalice reputedly used by a priest when visiting the sick.

139

A late 18th Century small porringer  
With heart pierced shaped single ear, booged bowl, *diameter including ear 12cm*, together with an unusual miniature funnel, possibly 17th Century, cast in two halves, *length 3.6cm*; and a late 18th Century small funnel, incised lines to body, *length 7.8cm, (3)*  
£150 - 180





140

140

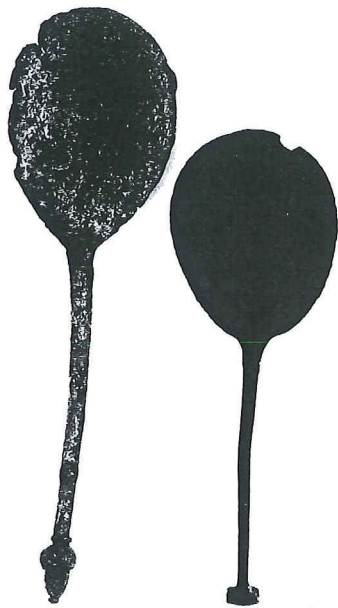
A pair of plain rim plates, circa 1720

Each with touchmarks to reverse of Thomas Ridding II, London, (w.1699-?), (OP3942, PS7875), rim with the Walpole crest, a Saracen's head in profile, ducally crowned with a flowing Red Cap turned down to front, inscribed *HONI. SOIT. QUI. MAL. Y. PENSE*, the motto of the English Chivalric Order of the Garter, diameter 9 5/8in. (2)  
£300 - 400

Provenance: Supplied to Sir Robert Walpole, (1676-1745), later 1st Earl of Oxford, for Houghton Hall, Norfolk.

A set of twelve identical plates sold Christie's, 8 December, 1994, Houghton Hall sale. The catalogue entry records the set as part of the *forty six dozen and half pewter plates* listed in the *Store Room* in the 1745 inventory and in 1792 as *85 pewter dishes and 10 dozen soup plates and 36 dozen of meat plates*. The 1792 inventory also records *In the press in the Maid's room 49 round pewter dishes 18 round pewter dishes, 4 old round dishes, 36 dozen and 9 meat plates*.





141



142



143

141

An acorn knop spoon, circa 1500

Traces of a maker's mark to fig-shaped bowl, *length 16.7cm*; together with a 17th century European spoon, having a short stem terminating in a simple knop, *length 13cm*, (2)  
£300 - 400

142

A bronze trifold spoon, circa 1690

Plain body, with elongated bowl, traces of antico-verdi, *length 17.6cm*.  
£200 - 300

143

A trifold spoon, circa 1700

Hallmarks to reverse of stem of John French III, London, (w.1687-1711), (PS1321), also with ownership triad 'IPD' stamped in a circle with a stag and crowned X mark, rat-tail to reverse of bowl, *length 20.5cm*; together with a latten slip-top spoon, circa 1700, maker's mark of Gabriel Grunwin, (w.1681-1713), London, (OP2039, PS4123), to fig-shaped bowl, *length 17cm*, (2)  
£200 - 300

144

A Normandy flagon

Of typical shouldered form, with heart-shaped lid and twin-acorn thumbpiece, ownership initials to single-curve handle, *height 26cm*; together with a European repoussée spouted flagon, acorn-knop to dome lid, mark inside base, *height 30cm*; three pint mugs, an 18th century single reed charger with indistinct touchmark to rear, *diameter 18in*; another 18th century dish, *diameter 16½in*; an 18th century plain rim deep dish, *diameter 13½in*; together with six plain rim plates, *diameter 9in*, (14)  
£200 - 300

145

A single reed charger, London, circa 1700

Hallmarks to rim, touchmark and London label to reverse of Thomas King I, (W.1675-1708), (OP2752, PS5505), ownership initials 'RD' also stamped to rim, *diameter 20in.*; together with six mostly 18th Century European plates, including an example tulip engraved to well and a pair of rococo wavy rim examples, *8in to 9½in diameter*. (7)  
£100 - 200