



Days of Sale

---

WEALDEN ROOM – Tuesday 23rd June 1987 at 10.30 am

**Fine Oak Furniture**

WEALDEN ROOM – Tuesday 23rd June 1987 at 2.00 pm

**Metalwork, Works of Art, Samplers and Embroideries,  
including Whitework and Lace**

On View: Friday 19th June 1987, 9.30 am–4.30 pm,  
Saturday 20th June 1987, 9.30 am–12.30 pm and Monday 22nd June 1987, 9.30 am–4.30 pm

---

ANDERIDA ROOM – Wednesday 24th June 1987 at 10.30 am

**Maps, Antiquarian and Modern Books,  
Original Illustrations**

On View:  
Friday 19th June 1987, 9.30 am–4.30 pm, Saturday 20th June 1987, 9.30 am–12.30 pm,  
Monday 22nd June 1987, 9.30 am–4.30 pm and Tuesday 23rd June 1987, 9.30 am–4.30 pm

---

CISSBURY ROOM – Thursday 25th June 1987 at 10.30 am

**Fine Oriental Ceramics and Eastern Works of Art**

On View:  
Friday 19th June 1987, 9.30 am–4.30 pm, Saturday 20th June 1987, 9.30 am–12.30 pm,  
Monday 22nd June 1987, 9.30 am–4.30 pm and Tuesday 23rd June 1987, 9.30 am–4.30 pm

---

WEALDEN ROOM – Tuesday 30th June 1987 at 10.30 am

**Eastern Carpets and Rugs**

On View: Friday 26th June 1987, 9.30 am–4.30 pm,  
Saturday 27th June 1987, 9.30 am–12.30 pm and Monday 29th June 1987, 9.30 am–4.30 pm

---

CISSBURY ROOM – Wednesday 1st July 1987 at 10.30 am

**Decorative Arts post 1860,  
including Art Nouveau and Art Deco**

On View:  
Friday 26th June 1987, 9.30 am–4.30 pm, Saturday 27th June 1987, 9.30 am–12.30 pm,  
Monday 29th June 1987, 9.30 am–4.30 pm and Tuesday 30th June 1987, 9.30 am–4.30 pm

---

CHANCTONBURY ROOM – Wednesday 1st July 1987 at 2.30 pm

**Antiquities, Tribal and Asian Art**

On View:  
Friday 26th June 1987, 9.30 am–4.30 pm, Saturday 27th June 1987, 9.30 am–12.30 pm,  
Monday 29th June 1987, 9.30 am–4.30 pm and Tuesday 30th June 1987, 9.30 am–4.30 pm

---

which will be sold  
by

**SOTHEBY'S**

FOUNDED 1744

**Sussex**

Summers Place, Billingshurst, West Sussex RH14 9AD  
Telephone: (040381) 3933  
Telex: 87210 GAVEL

Illustrated Catalogue £5.00

Sotheby's London: Registered at 34-35 New Bond Street, London W1A 2AA  
No. 87486

PEWTER

650  A wriggle-work Plate, early 18th Century, with single reeded rim, *touch aduerso rubbed*, the front decorated with a tulip, the booge with etched linear decoration, 21.5cm.; 8½in. diam. £250-350

651 A pair of wavy-edged triple-reeced oval Dishes, English, circa 1760, each with engraved crest to rim, 43cm.; 17in. across, *repair to base on one*; together with a set of four similar wavy-edged Side Plates by Richard Pitts, each with engraved crest to rim, 25cm.; 9¾in. diam. (6) £180-220

652 A collection of Plates, largely 18th Century, including: plates by John Home (2), 24.5cm.; 9¾in.; Henry Joseph (3), 24.5cm.; 9¾in. and further similar, etc. (12) £150-200

653 A Continental barrel-shaped Urn, 19th Century, the spout to base issuing from grotesque mask, the lid with spire finial, 28cm.; 11in.; and two 'Trophy' pint Mugs (3) £60-100

654 A collection of Measures, 19th/early 20th Century, including: a set of four French metric measures, from demi-litre to demi-decilitre, four pot-bellied baluster measures, from half-pint to quarter-gill, a quart tankard, three further pint tankards, a chalice, a caster and a mustard pot (15) £80-120

655 A pair of baluster stemmed ejector Candlesticks, 1st half 19th Century, with gadrooned edged circular bases, 23cm.; 9in.; another pair of Candlesticks; four pot-bellied lidless Measures, from half-pint to half-gill; and seven further Tankards, Measures, Plates, etc. all 19th Century (15) £120-160

656 A harlequin graduated set of five pot-bellied baluster Measures, 19th Century, including: quart, pint, half-pint and gill (2); together with two Pint Tankards (7) £100-140

657 A collection of five pewter Side Plates, 18th and 19th Century, including: Duncombe, 22cm.; 8¾in.; a French plate, 24cm.; 9½in.; and three others similar (5) £50-80

658 A set of four Plates, mid-18th Century, maker's touch S.H. in 'hallmarks' ownership triad to reverse R<sup>C</sup>M, 23.5cm.; 9¼in. diam. £120-160

659 An Imperial Quart 'U'-shaped Tankard, circa 1840, with double-scroll handle; together with matching Pint Tankard; a quart pot-bellied baluster Measure; and a similar Pint Measure; and a graduated set of three Tankards, with brass rims of cylindrical tapering form, from quart to pint to half-pint (7) £160-220



650

660 Four Victorian quart Tankards, each of cylindrical tapering shape, two with spouts, various inscriptions and stamps; together with two quart spouted Tankards; and two pint spouted Tankards by Loftus (8) £180-240

661 A set of three single-reeced rim Dishes, 2nd half 18th Century, one rim damaged, 33.5cm.; 13¼in.; and a pair of Plates by Samuel Duncombe, 24cm.; 9½in. (5) £120-160


662 A single-reeced rim Dish, 2nd half 18th Century, 42cm.; 16½in.; three various Side Plates; and four Saucer Dishes of 17th Century design (8) £100-150

663 An oval Serving Dish, late 18th Century, traces of engraved crest to rim, some corrosion, 60cm.; 23¾in. across £100-150

664 A graduated set of six pot-bellied baluster Measures, circa 1840, including: quart, pint half-pint, gill, half-gill and quarter-gill, each stamped V.R. 486, two stamped James Yates £180-220

665 A rectangular Standish, English, 18th Century, raised on four bell-shaped legs, with single central flap inscribed *This stand or its contents is not to be moved out of the Church*, dividing one open compartment for pens from a triple-divided compartment fitted with a cylindrical pounce pot, corrosion, 20cm.; 8in. across £100-150

666 A pair of Candlesticks, 1st half 19th Century, with vase-shaped baluster stems, gadrooned circular bases and drip pans, 23cm.; 9in.; together with a similar pair (4) £140-180

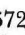
667  A single-reeced rim Charger by Richard King, mid-18th Century, ownership triad W<sup>B</sup>M to rim, *touch aduerso*, 51cm.; 20in. £150-200

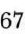
668 A single-reeced rim Charger, mid-18th Century, *touch indistinct*, corrosion, 51.5cm.; 20¼in. £100-150

669 A pair of Flemish Dishes, single-reeced rims, *touch to reverse*, ownership EXPH and date 1822 within cartouche to front rims, 42cm.; 16½in. diam.; an English Dish, Richard . . ., single-reeced rim, early 18th Century, 42cm.; 16½in.; and a further Continental Dish, maker B.D.H., 43cm.; 17in. diam. (4) £250-350

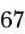
670 A collection of single-reeced rim Dishes, 18th Century, including: four Continental, 38cm.; 15in. diam., and two English, 35cm.; 13¾in. and 37.5cm.; 14¾in., various makers, touches indistinct (6) £250-350

671 A pair of Flemish single-reeced rim Dishes, late 18th Century, maker I.S. to reverse and ownership initials to front rim, 38cm.; 15in.; two deep Dishes, Continental, 18th/19th Century, 33cm.; 13in.; a Continental Dish, 35cm.; 13¾in.; and two Continental Plates with embossed armorials, 19th Century, 23cm.; 9in. (7) £250-350

672  An English Ale Jug, early 19th Century, of usual form with domed lid, front spout, palmette thumbpiece, 22cm.; 8¾in. £140-180

673  A Normandy spouted lidded Flagon of usual shouldered form, 19th Century, with double-acorn thumbpiece, 26cm.; 10in.; and another similar (2) £180-220

One illustrated

674  A spouted pear-shaped lidded Flagon, Flemish, early 19th Century, with shell thumbpiece, domed lid and 'double-scroll' handle, *touch and rosette quality mark under base*; and another similar, both 25.5cm.; 10in. £180-220

One illustrated

675 A spouted pear-shaped lidded Flagon, Flemish, 19th/early 20th Century, with shell thumbpiece and broken-arched handle, 24cm.; 9½in.; another similar, 22cm.; 8¾in.; and another with lid detached (3) £180-220

676 A French lidded Flagon, 18th Century, of shouldered form, with heart-shaped lid, impressed L.G.L. and with ridge thumbpiece, on skirt base, 22cm.; 8¾in.; and a Belgian Wine Measure, 19th Century, 15cm.; 6in. (2) £150-200

677 A 'Jan Steen'-type Flagon, Dutch, 19th Century, with long spout, domed lid, 'S'-shaped handle and on raised cylindrical tapering base, inscribed D. Van Der Veen, 29cm.; 11½in.; and a Continental bulbous lidded Flagon with domed lid and shell thumbpiece, 26cm.; 10in. (2) £180-220

678 A pair of Wine Carafes, French, late 19th Century, each of ovoid shape with flared rim, ring-turned decoration and notched inside handle edge, 36cm.; 14in. £100-200

679 A harlequin graduated set of seven Metric Measures, Flemish, late 19th/early 20th Century, from double-litre to one centilitre, each of cylindrical form with raised shaped top rim and each with various capacity marks and registration stamps, 26 to 5cm.; 10 to 2in. £200-300

680 A similar harlequin set of seven Measures, together with an extra Flemish half-litre Measure, the double-litre measure distressed, 26 to 5cm.; 10 to 2in. (8) £200-300

681 A collection of four Coffee Pots, Flemish, early 19th Century, each of ovoid elongated form and each with zoomorphic spout and wood handle, maker's marks under base, each with different finial to lid, 29 to 26cm.; 11½ to 10in. (4) £200-300

682 A collection of Condiments, Continental 18th/19th Century, including: a baluster-shaped Sifter, Dutch, 18th Century, 12cm.; 5in., three baluster or urn-shaped Sifters, circa 1800, and three Sifters, late 19th Century, including one in the form of a lady, 12cm.; 5in., four various plain cylindrical Cup Salts, 18th/19th Century, two small Beakers, two Dutch urn-shaped Mustard Pots and four assorted Lids (19) £200-300

683 A wall hanging Salt Box, German, 19th Century, with engraved and pierced backplate and hinged lid, 28cm.; 11in.; a Dutch Teapot, circa 1800, of flattened pear shape, 16cm.; 6½in.; two Holy Water Stoups, two Spoons of 17th Century design, a Beaker, 13cm.; 5in. and two Continental Porringers with plain flattened handles, 25cm.; 10in. across (9) £200-300

684 A pair of Victorian lobed base Candlesticks, 26cm.; 10in.; four pot-bellied lidless Measures, two gill and two half-gill; three Pint Tankards, late 19th Century, two Beakers, early 19th Century, 7cm.; 2¾in.; and a brass lidless baluster half-pint Measure (12) £100-150

685 □ A pair of Jersey lidded Measures, 18th Century, each of usual baluster shape with heart-shaped lid, front spout and double-acorn thumbpiece, one with ownership E.R.R. to handle, the other with three circular punches to lid with later ownership inscription X.E.Q. and repair to body near handle, 27cm.; 10½in. (2) £300-500

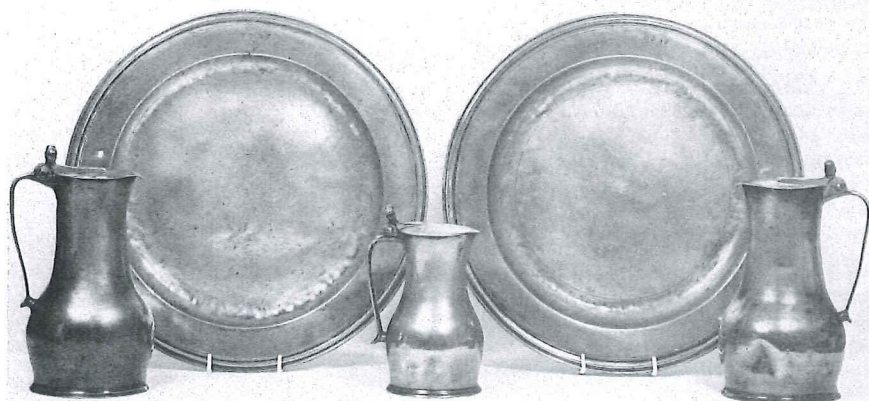


674

677

672

673



685

688

687

688

685

686 A similar Jersey Measure, 18th Century, touch inside lid I.N., crowned G.R. registration stamp to body and ownership and date P.L.B. 1785 to handle, repair to lid, 28cm.; 11in. £150-200

687 □ A John de St. Croix Jersey Measure, 18th Century, with double-acorn thumbpiece, touch inside lid, baluster body and ownership to handle S.A.B., 21cm.; 8¼in. £150-200

688 □ A pair of Stuart triple-reeded rim Dishes, late 17th Century, by the maker I.H., each with four touches to front rim, 42.5cm.; 16¾in. diam. £300-400

Cf. Cotterell 5666

689 A collection of eleven assorted Side Plates, 18th Century, by Samuel Duncombe, Carter (2), Toundrow Poynton (2), William Cooke and others, 24 to 21cm.; 9½ to 8¼in. (11) £120-180

690 A pair of baluster stemmed ejector Candlesticks, 1st half 19th Century, each with beaded domed base and drip pan, 25cm.; 10in.; a similar pair of cylindrical tapering stemmed Candlesticks, 23cm.; 9in.; and another smaller pair (6) £120-180

691 A pair of late Victorian straight-sided tapering quart Tankards, inscribed under base W. Marnley, Trout Inn, Godstone; and a near-pair of 'U'-shaped quart Tankards, one stamped Watts & Harton, the other with engraved monogram R.P. (4) £100-150



716

714

717

692 A pair of baluster-shaped Beakers, 15cm.; 6in.; a pair of Communion Mugs, 11cm.; 4 $\frac{1}{4}$ in.; a reeded Beaker of half-pint capacity; two pint Tankards; and three half-pint Tankards of cylindrical tapering shape, all 19th Century (10) £90-120

693 A Georgian lidless Tankard, W.R. capacity stamp and indistinct touches, 12cm.; 4 $\frac{3}{4}$ in.; a Glasgow domed lid baluster Measure, 19th Century, 10cm.; 4in.; a pint pot-bellied baluster Measure; and two similar half-gill Measures (5) £90-120

694 A Georgian oval Tobacco Box, circa 1790, with classically gadrooned lid, containing tamper, 10cm.; 4in.; a twin-eared Porringer, late 18th Century, 26cm.; 10in. across; three capstan Inkwells, 19th Century; and an Oriental engraved Container (6) £80-120

694(a) A set of four Side Plates, late 18th Century, touch indistinct, single-reeded rim, with ownership A.T., 23.5cm.; 9 $\frac{1}{4}$ in. diam.; a similar set of three Plates, 23cm.; 9in.; and another (8) £120-180

694(b) A pair of single-reeded rim Dishes, by Allen Bright, 18th Century, ownership initials I.I. to rim, 38cm.; 15in. diam. £120-160

694(c) A pair of single-reeded rim Chargers, 18th Century, touches indistinct, ownership initials IT and W<sup>T</sup>M to front rims 42cm.; 16 $\frac{1}{2}$ in. £150-200

## BRASS AND COPPER

695 A Flemish brass six-light Chandelier in late Gothic style, 19th Century, the tall narrow hexagonal frame containing a figure of the Virgin and Child and surmounted by a lion finial, the arms cast with scrolling leaves and each nozzle with a crown drip pan, two drip pans and three nozzles lacking, 69cm. high; 27in.; 66cm. diam.; 26in. £300-500

696 An unusual gilded brass four-branch Chandelier, Flemish, 17th/18th Century, with multi-baluster stem, supporting a star-burst base of eight radiating oil lamp reservoirs, the top with four 'S'-shaped branches with wide drip pans and candle nozzles, 41cm.; 16in. high, now converted to electricity £250-400

697 A brass three-branch Chandelier of Dutch 18th Century design, 29cm.; 11 $\frac{1}{2}$ in.; and a set of three brass twin-branch Wall Lights of similar design, 23cm.; 9in., all fitted for electricity (4) £100-150

698 A brass six-branch Electrolier of Dutch 17th Century design, with spherical stem, 'S'-scrolled arms and finial in the form of a seated lion below ring top, 51cm.; 20in. £120-180

699 A bell-metal Goblet, 18th Century, of cylindrical tapering form, on knopped stem and circular base, 14cm.; 5 $\frac{1}{2}$ in. £200-300

700 A pierced and engraved brass Jardinière, 19th Century, of hexagonal shape with foliate and geometric pierced sides, on four ball feet, 34cm.; 13 $\frac{1}{2}$ in. £100-150

701 A large copper Cauldron, early 20th Century, with silvered cast side handles and tinned interior, the plain cylindrical body stamped Cunard Line, 48cm.; 19in. high £100-150

702 A brass Jardinière, Dutch, early 19th Century, with embossed gadrooning and cartouches, and with lion mask ring handles, 41cm.; 16in. diam.; together with a gilded cast and wrought-iron Torchère in the form of three interlaced axes supporting circular top, above shield base, 19th Century, 120cm.; 47in. £250-400

703 A tapering hexagonal brass Lantern, Dutch, 19th Century, with pierced embossed domed lid and glazed sides, 48cm.; 19in., on wrought-iron foliate embossed stand, 160cm.; 63in. £100-150

704 A brass Lantern, French, 19th Century, of rectangular shape with chamfered corners, each inset with glass panel, the door with embossed rococo cartouche, the domed and pierced lid ending in swing handle, 40cm.; 15 $\frac{3}{4}$ in. £100-150

705 A Georgian copper Chocolate Pot, mid-18th Century, of cylindrical tapering shape, with fruitwood turned side handle, 'S'-shaped spout and half-domed lid, 20cm.; 8in. £70-100

706 A pair of brass Snuffers, Nuremberg, 17th Century, the ovoid snuffer end embossed with flowers, the handles with reeded baluster stems and hooked ends, 17.5cm.; 7in. £200-300

707 A brass 'Honesty' Tobacco Box, English, mid-19th Century, with coin-in-the-slot and push-button operation, the double-hinged rectangular top centred by cast handle, above plain body, on four ball feet, key lacking, 24.5cm. long, 9 $\frac{3}{4}$ in. £300-500

708 A brass and iron footman Trivet, English, late 18th/early 19th Century, the rectangular top with side drop handles, one lacking, above shaped apron with cabriole steel front legs and slender rectangular back legs, 35cm.; 13 $\frac{3}{4}$ in. £120-150


709 A pair of brass Candlesticks of George I style, each with quatreform base and baluster stem with moulded nozzle, 17cm.; 6 $\frac{3}{4}$ in. £200-300

710 A brass Dog's Bowl, 19th Century, of cylindrical moulded shape, 20cm.; 8in.; and a Georgian brass petal based Candlestick, circa 1750, lacking drip pan (2) £80-120


711 A pair of French brass Candlesticks, of early 18th Century design, with side ejector handles (non-matching drip pans) and domed circular bases, 21cm.; 8 $\frac{1}{2}$ in.; a Victorian brass Student Lamp, with patent candle ejector, 36cm.; 14in.; a Chamberstick; and two brass Eagles (6) £100-150


712 A pair of bell-based brass Candlesticks, North European, 17th Century, each with domed cylindrical base, with mid-drip pan and knopped stem, 17cm.; 6<sup>3</sup>/<sub>4</sub>in., bases possibly later  
£150-250

713 A similar near-pair of Candlesticks, some damages, 18cm.; 7in.  
£150-250

714  A pair of brass ejector Candlesticks, circa 1700, each with domed circular base, cylindrical ribbed stem and with side ejector button handles, one missing, 20cm.; 8in.  
£200-300

715 A pair of Georgian brass Candlesticks, circa 1780, each with domed square gadrooned base rising to reeded classical columns and moulded nozzles, drip pans lacking, 25cm.; 10in.  
£150-200

716  A pair of Georgian brass Candlesticks, circa 1760, each with lobed domed petal base, cylindrical stem with one high knop and moulded nozzle, 23cm.; 9in.  
£250-350

717  A pair of Georgian brass shell based Candlesticks, circa 1750, each base with six shell-shaped lobes rising to gadrooned double-knopped stem, moulded nozzle and detachable lobed drip pans, 26cm.; 10in.  
£800-1,200

718 A pair of gilt copper Altar Candlesticks of late 17th Century design, each of multi-baluster form with wide high drip pan and tripod scrolled base, overall embossed with foliate motifs and cartouches, 72cm.; 28<sup>1</sup>/<sub>2</sub>in., converted to electricity  
£200-400

719 A pair of Victorian brass Coal Scuttles, 19th Century, each with central swing carrying handle, cylindrical tapering body and domed circular base, 54cm.; 21in.  
£150-200

720 A late Georgian brass bow-front Fender, early 19th Century, the frieze pierced with a foliate design, 127cm.; 50in.; a folding brass Firescreen, 64cm.; 25in.; and miscellaneous Tools  
£150-200

721 A set of three brass Fire Irons, circa 1900, each with knopped ball handles, 66cm.; 26in.; a pair of brass Tool Rests; and two further items (7)  
£150-200

722 A set of three brass Fire Tools, 19th Century, each with ball finial and plain stem, 63.5cm.; 25in.; and two other brass Fireside Items  
£120-180

723 A set of three brass Fire Irons, early 20th Century, each with large ball and baluster handles, 71cm.; 28in.  
£100-150




726

724 A pair of brass Andirons of baroque design, 19th Century, each with ball and baluster stem above splayed legs centred by a putto mask and with curved brass backrest, 56cm.; 22in.  
£250-350

725 A set of three Georgian steel and brass mounted Fire Irons, circa 1800, each with engraved brass urn finial and other classical brass mounts, 79cm.; 31in.  
£200-300

725(a) A pair of brass Candlesticks, Dutch, 18th Century, each with baluster stem above square base, raised on paw feet, 21cm.; 8<sup>1</sup>/<sub>4</sub>in.  
£400-600

IRON, STEEL, BRONZE AND FIRE FURNITURE

726  A set of nine Hand Bells by Robert Wells, late 18th Century, most cast with the name R. Wells inside bell, most with sound dampners and all with leather attachments, some slight damage, 16.75 to 9.5cm. diam.; 6<sup>1</sup>/<sub>2</sub> to 3<sup>3</sup>/<sub>4</sub>in.  
£500-800

727 A pair of sheet-iron ejector Candlesticks, early 19th Century, with conical filled bases rising to plain cylindrical columns with side ejector handles, 24cm.; 9<sup>1</sup>/<sub>2</sub>in.  
£120-180

728 A Spanish steel four-branch Candelabra in 16th Century design, the domed trifirm base pierced with foliage, with slender stem and 'S'-shaped branches supporting nozzles and drip pans, 46cm.; 18in.  
£100-150

729 A wrought-iron Wall Sconce, 17th Century, the scrolled stem with five prickets, issuing from a rosette and leaf backplate, 37cm.; 14<sup>1</sup>/<sub>2</sub>in.  
£150-250

730 A pair of gilt-iron Chancel Candlesticks, Spanish, 18th/19th Century, each with wide drip pan above baluster-shaped slender stem decorated in relief with flowerheads, on three scrolled legs, 117cm.; 46in., converted to electricity  
£300-400

731 A collection of 20 assorted wrought-iron Locks, 18th and 19th Century, including: door locks with shaped plates, rectangular rim locks, two padlock-type locks, together with keys, etc. (20)  
£400-600

732 A bronze Cauldron, 17th Century, of cylindrical shape with twin triangular lug handles, linear decoration to body and three reeded legs, polished, 28cm.; 11in. diam.  
£80-120

733 A bronze Mortar, 17th Century, cast with loop side handles and with four eagles' heads within foliate oval cartouches, 11.5cm.; 4<sup>1</sup>/<sub>2</sub>in.  
£80-120

734 A bronze Mortar of 17th Century design, early 20th Century, cast with reeded flared rim, side lugs in the form of human masks, body applied with satyr masks, foliate swags and acanthus decoration and dated M.D.C. XXX, 21cm.; 8<sup>1</sup>/<sub>4</sub>in.  
£200-300

735 A brass Mortar, circa 1800, of usual cylindrical tapering form, 11cm.; 4<sup>1</sup>/<sub>2</sub>in., together with a matching Pestle; another similar, smaller, with Pestle; and two German cast-iron Mortars and Pestles with side lug handles cast with the inscriptions *Durch Krieg Zum Sieg*, one dated 1914-1916, the other 1914-1917, 11.5cm.; 4<sup>1</sup>/<sub>2</sub>in.; together with a glass bead Bell Pull (5)  
£120-180