

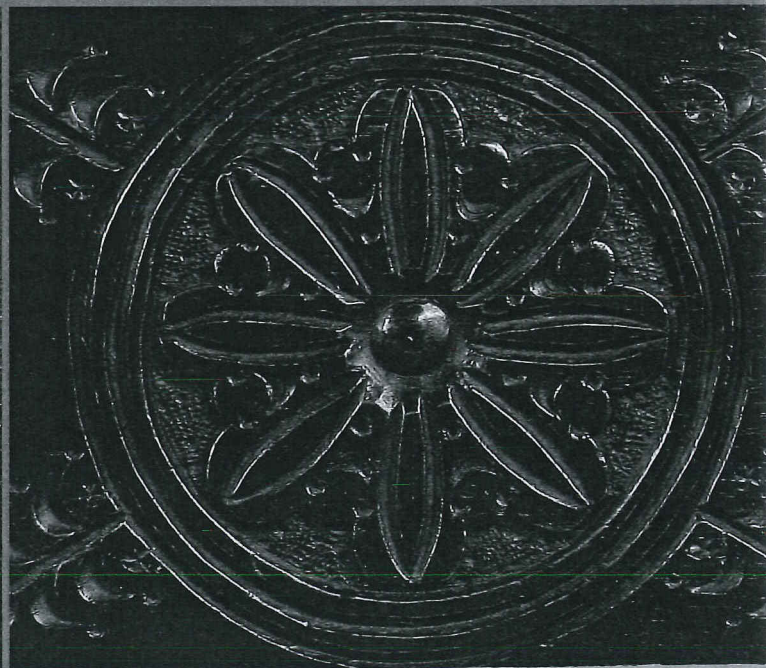
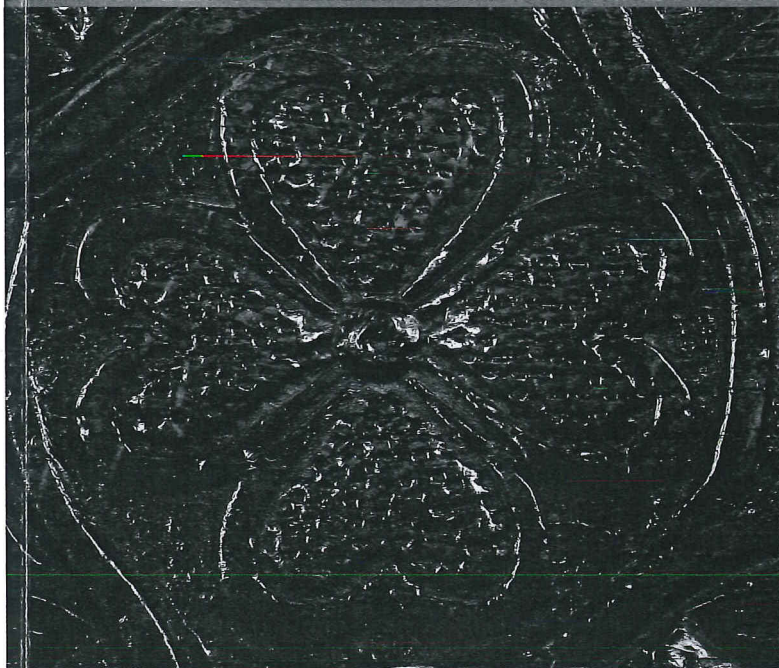
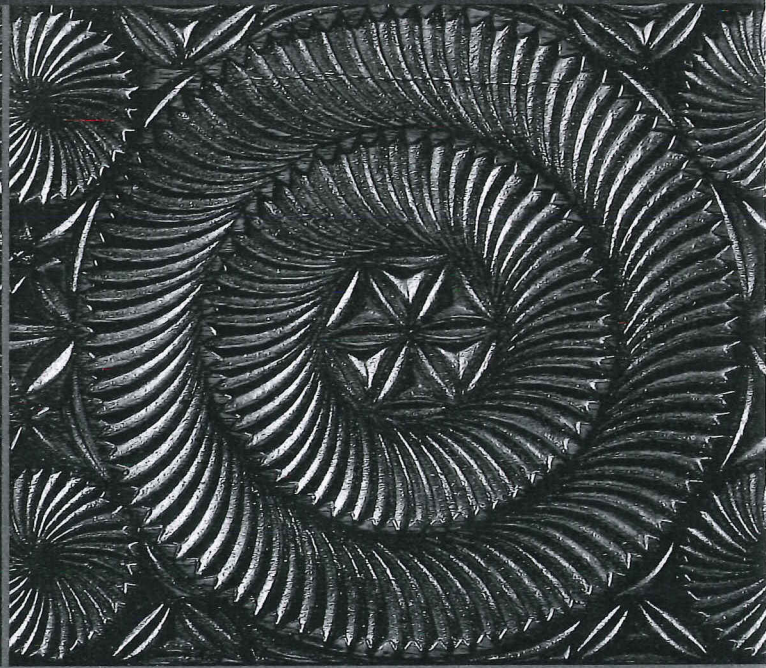
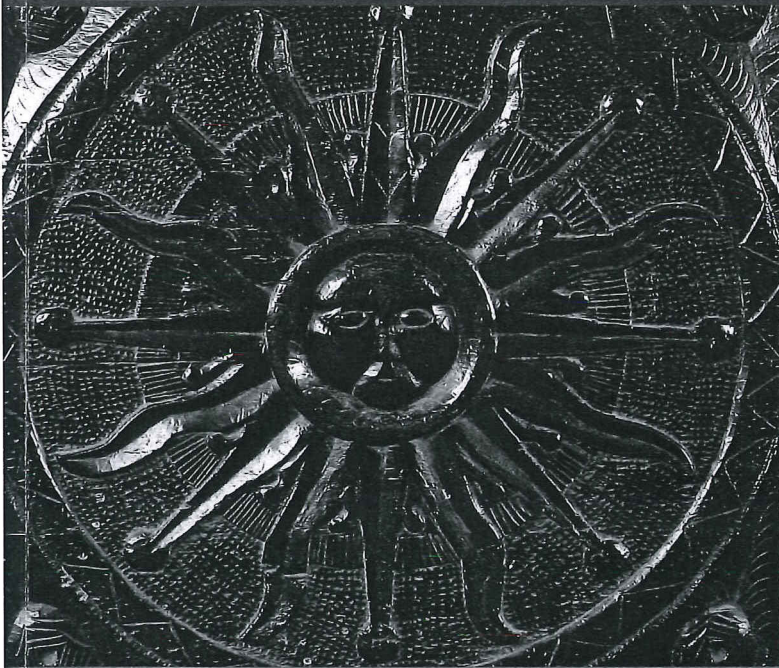
E2D

1793

Bonhams

Good British Pottery, Oak Furniture, Pewter and Related Works of Art

Wednesday 13 and
Thursday 14 January 2010
Chester





205, 206, 207

Pewter

200

A 19th Century tulip-shaped quart mug

With Sussex verification mark to rim, double C-curve handle with fish-tail terminal, together with a truncated cone pint mug by Abel Grove II, (PS 4128); another pint mug with touchmark to base and a glass bottom example, probably by Henry Compton, (OP 1063), (4)
£40 - 60

Provenance: Dr. R. Homer Collection.

201

A Bristol export pint mug, circa 1800

The straight sided body with single fillet and flared foot rim, single-curve handle with ball terminal, unidentified touch in base, probably Hale & Sons, (OP 2070), height 11.6cm
£40 - 60

Provenance: Dr. R. Homer Collection.
Purchased in Connecticut, U.S.A.

202*

A half gallon measure, circa 1914

Maker's mark of Brown & Englefield, (OP 1576) to underside of base, the flared drum with multiple reeded base and D-shape handle, crowned GR mark to lip, height 21cm.
£100 - 150

203†

A group of five late 18th Century Jersey lidless measures

Comprising a quart, three half-pint and a half-noggin example, each with baluster shaped body and lug to single curve handle, each with crowned 'GR' verification mark to rim, (5)
£300 - 500

204

A half pint lidless baluster measure, circa 1800

The plain body with single curve hollow handle; together with a spouted pint barrel shaped filleted measure, by Richard Neate; and a 19th century half pint beaker by Watts and Harrison, (3)
£120 - 180

205

A late 17th Century dome lidded tankard, circa 1690

Touchmark in base of William Wood II, Birmingham, (OP 6028), the plain drum with crowned 'X' to rim, the dome lid with front denticulations, rams-horn variant thumbpiece, single curve handle with boot heel terminal, height 18cm.
£500 - 800

Provenance: Dr R. Homer Collection.

Exhibition of *British Pewterware Through the Ages from Romano-British Times to the Present Day*, held at Reading Museum and Art Gallery, 20th September to 31st October 1969, item No. 135.
Reputedly Ex Grant Collection.

A near identical flagon by William Wood II, sold Phillips, Chester, *The Law Collection*, 25th September 1997; a similar tankard from the *Ken Gordon Collection* sold in these rooms, 7th May 2008, lot 318.

206

A 19th Century gallon spouted jug

The bulbous body with multiple mid fillets, the spout with shaped crescent lip cover, single curve handle, verification marks to collar, height 27cm
£200 - 300

207*

A spouted dome lidded tankard, circa 1780

The tapering drum with single fillet, the double dome lid with palmette thumbpiece, double C-scroll handle with fish-tail terminal, stamped X inside base, height 21.5cm.
£200 - 300



210, 211, 212, 213

208

A 19th Century pint mug, circa 1840

The straight sided body with touchmark of William James Phillips inside base, (MPM 3658a), inscribed on body 'Wescomb Prudent Widow Yawford'; together with a Pre-Imperial pint spouted mug, crowned 'WR' mark to rim, mark of 'CB' to rim, Bristol verification mark, another truncated pint mug with touchmark in base of Thomas Meeson & Co., (PS 6387) and hallmarks to collar of Meeson & Grove, circa 1815; together with a concave pint mug, Birmingham, verification marks struck through, touchmark of James Yates overstruck S.Mason, (4)

£40 - 60

Provenance: Dr. R Homer Collection.

209

An early 19th Century spouted pint tankard

Touchmark in base of Grimes and Son, (1817-1838), London, (OP 2025), the filleted drum with engraved monogram, dome lid, thumbpiece partly lacking, double C-curve handle with fish-tail terminal, height 14.5cm; together with a pair of 19th century half pint dome lidded tankards, each with twin fillet to tapering drum, single curve handle with heel terminal, one lid detached, (3)

£200 - 300

210

Three early 18th Century porringers

Each with touchmark '?H' to pierced single ear, the 'booged' bowl with flat well, each lacking end of ear, diameter 5in. (3)

£200 - 300

211

An O.E.W.S. quart tulip shaped dome lidded tankard, circa 1840. Touchmark inside base of T & W Willshire, Bristol, with open thumbpiece, double curve handle with fish-tail terminal, height 19cm

£200 - 300

212

A mid 17th century English trumpet based candlestick. With single fillet to stem, unusual and rare brass rim to the replaced drip pan, the nut inside the stem is a feature of 17th century manufacture, height 6in, 15.3cm

£500 - 800

Provenance: Pat Kydd Collection, Bristol. The Little Collection May 2007, lot 81.

Literature: Illustrated P. Hornsby, 'Pewter of the Western World', Fig. 89

213

A mid 19th Century two-handle pint cup

Touchmark of Campbell & Co., Belfast to underside, verification marks to rim, single fillet to body, double scroll handle with fish-tail terminal, height 14.5cm

£120 - 180

214

A mixed collection of pewter

To include truncated cone measures bearing touchmark of Wm Robert Loftus (146 Oxford Street (c1870-1882)); a brass rim to pint measure; a pepperette; two plain rim 9in plates; a plain rim to coffee burner and a Britannia Metal coffee pot, (13)

£200 - 300



219, 220, 221, 222

215

Four Irish haystack measures

Quart, pint, half pint and gill capacity, (4)

£150 - 200

216

An 18th Century single reed dish

Diameter 16 $\frac{3}{4}$ in, together with two 13 $\frac{1}{4}$ in examples; a pair of single reed plates, each bearing touchmark of Thomas Bacon (OP 181) diameter 9in; four other 9in plain rim plates and two single reed examples, including three plates bearing touchmark of Toundrow Poyntom, York (OP 3755), together with a pair of baluster candlesticks and a pepperette, (14)

£80 - 120

217

A collection of sadware

To include an 18th century single reed dish, diameter 16 $\frac{1}{2}$ in.; a 14 $\frac{3}{4}$ in diameter example; a 12in plate with hallmarks of WW and touchmarks to reverse (PS10484); an early 18th century plain rim plate with touchmarks of Stephen Bridges to rear, diameter 9 $\frac{1}{4}$ in.; two other plain rim plates of similar size and a French cylindrical half litre measure, (7)

£100 - 200

218

An 18th Century O.E.W.S. pint bud baluster measure, circa 1730

Multiple incised lines to flat lid, height 16.5cm

£150 - 200

Provenance: Dr. R. Homer Collection.

219

A Dutch spouted 'angel' flagon

With flat-dome lid, 'angel' mask thumbpiece, the bulbous body on a splayed foot, 28cm high

£200 - 300

Literature: P. Hornsby, *Pewter of the Western World*, p. 82, pl. 141, illustrates a Dutch flagon with a similar angel mask thumbpiece.

220

A late 18th Century spire flagon

Hallmarks of Bush and Perkins, Bristol, (OP 740), to collar, the tapering drum with knopped multiple domed lid, solid handle and characteristic double curve handle, height 28cm

£400 - 600

221

A late 18th Century Guernsey measure

Quart, touchmarks to lid of Catherine Marrant, Southampton (1778-1800), (PS 13178), the baluster body with high fillet and lower multiple incised lines, twin acorn thumbpiece and single curve handle, height 23cm

£300 - 500

The 'A Posse Ad Esse' touchmarks on the lid are also found on flagons made by Ann Carter, although this flagon was more likely made by her business successors Simon and Catherine Marrant.

222

A Scottish tappit hen, circa 1800

Of Chopin capacity, the body of typical shouldered form, worn ownership initials to lid, height 22cm

£250 - 300



225, 226, 227

223†

A collection of 19th Century brass rim straight-sided measures
Each with twin scroll handle and fish-tail terminal, three pint and two
half pint examples, (5)
£80 - 120

224

Two single reeded plates
Each bearing touchmark to rear of Webber, Barnstable, Devon, (see
OP 5015) *diameter 9¼in*; together with a single reeded plate bearing
hallmark and touchmark of John Evans, Exeter, (OP 1586), ownership
initials on rear 'EW' over 'MS', *diameter 8¾in*, (3)
£40 - 60

Provenance: Dr. R. Homer Collection.

225*

A mid 18th Century wine quart tulip shaped tankard
Touchmark in base of Allen Bright, Bristol, (OP 574), the body with
single narrow fillet, the double domed lid with heart-pierced chair back
thumbpiece, single curve handle with hooded ball terminal, *height*
18.8cm.
£800 - 1,200

226*

An 18th Century O.E.W.S. half gallon bud baluster measure, circa
1700
Touchmark of William Bankes, Wigan/Bewdley, to reverse of lid, (OP
240), crowned WR verification mark and stamped 'CM' (Commonwealth
of Massachusetts) to collar, the body with two narrow bands of incised
lines, *height 27.5cm*.
£1,800 - 2,000

A similar O.E.W.S. half gallon bud baluster measure, by William Bankes,
sold *The Little Sale*, Christie's, 1st May 2007, lot 59.

227*

An 18th Century O.E.W.S. quart double volute balust
With two bands of narrow incised lines to body, double v
thumbpiece and fleur-de-lys attachment to flat-lid, handle
ball terminal and diamond attachment, collar stamped CV
(Commonwealth of Massachusetts), to collar, *height 19.7*
£500 - 700

Verified in the United States of America.

228

A pair of 17th/18th Century European broad rim plat
Each with touchmark to front of rim, one with engraved i
diameter 11½in, (2)
£100 - 200

229

A pair of late 17th Century triple reed dishes, circa 16
With hallmarks to rim and touchmark to rear of William B
(1671-1705), *diameter 16½in*, (2)
£200 - 300

230

A 17th Century multiple reeded narrow rim dish
Hallmarks to rim and touchmark to rear of Nicholas Kelk, (C
(OP 2704), ownership initials MR to rim, *diameter 12in*
£150 - 200

231

A mixed collection of pewter
To include a 19th century inhaler, with acanthus leaf-cast h
early 19th century quart jug with grated spout and double-
handle; a quart Irish haystack measure; two plate warmers;
century single reed deep dishes, *diameter 14½in*; a wavy ec
a quantity of mostly bulbous measures, (19)
£200 - 300



234, 235, 236

232

A set of six plate warmers

Each bearing hallmark and touchmarks of Susannah Cocks, (1819-1844), with twin ring handles, *diameter 10in.*; together with an 18th century oval plain rim dish, a beaker, candlestick, twin handled squat bowl, Britannia metal jug and two pint engraved mugs, (13)

£200 - 300

233

An Irish half gallon haystack measure

Bearing touchmark to underside of Joseph Austen and Son *height 25.5cm*

£100 - 150

234

A James I flagon, circa 1615

The tapering cylindrical body engraved 'Ex. dono Johannis Peele, decimo sexto Aprilis, Anno Domini 1671,' with ovolo moulded foot, the bun cover with erect thumbpiece, wriggle-work initial G to handle terminal, *height 29cm.*

£1,000 - 1,500

Provenance: Dr. R. Homer Collection.

Exhibited at the *Coronation Exhibition*, Sheffield, 1953. Ex Scott-Nicholson and Isher Collections. Reputedly Bradshaw Collection.

Literature: Described and illustrated, Cotterell, *Great Pewter Collections I*, and *Apollo*, Feb. 1934, *Treasures of the Scott-Nicholson Collection*.

Scott-Nicholson died in 1932. His collection was sold Christie's 22 December 1947.



229, 230

235

A Beefeater flagon, circa 1690

Touchmark to base of William Paxton, (OP 3566), the squat plain tapering drum on a spreading foot with flat base, rare bud thumbpiece, swan-neck handle with 'shield' terminal. *Height 26.5cm*

£500 - 800

Provenance: Dr. R. Homer Collection.

Purchased Sotheby's, 31st July 1981, lot 105.

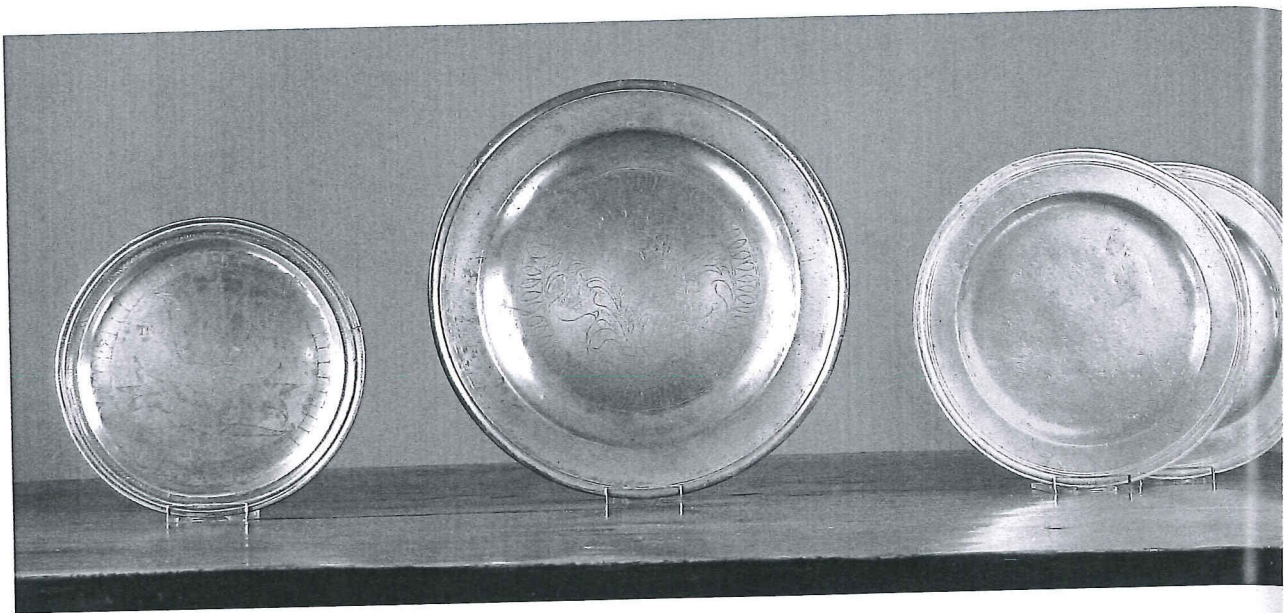
236

A late 17th Century straight sided flat-lid flagon, circa 1690

Touchmark of William Wood II, Birmingham, (OP 6028), inside base with plain tapering body and foot rim, the flat lid with front denticulations, unusual twin 'lobed' thumbpiece, the single curve handle with unusual twin lobed terminal, *height 29.5cm*

£400 - 600

Provenance: Dr. R. Homer Collection.



240, 241, 242



243

237

A 19th Century standish

Of typical rectangular twin flap form, containing two ceramic inkwells on dome feet, *length 19.5cm*; together with an 18th Century hot water plate, with plain rim and two swing handles, hallmark of Samuel Harrop, Shrewsbury, (OP 5681), to reverse, *diameter 9¼in*, (2)
£20 - 40

Provenance: Dr R. Homer Collection.

238

A late 17th Century lidless pint tankard, circa 1690

The plain straight sided body with collar, and flared foot, single-curve handle with uncut hinge lug, *height 12.5cm*
£100 - 150

Provenance: Dr. R. Homer Collection.

Purchased Lawrences of Crewkerne, 14th July 1994, lot 354.

239

A graduated set of six 19th Century Flemish measures each of collared cylindrical form, half litre to 1 centilitre, (6)

£100 - 150

240

A late 17th Century wrigglework narrow rimmed plate Hammered all over, decorated to the well with three stylised decoration to rim, bearing the ownership initials
diameter 8.3in.
£1,500 - 1,800



245, 246, 247, 248

241

An early 18th Century single reed wiggglework plate
Touchmarks and hallmarks to rear of Alexander Cleeve II, (OP 961), (PS 1727), the well decorated with a flower filled urn within a banded 'lenticular' border, *diameter 12in.*
£1,200 - 1,800

It is unusual to find wiggglework decoration on wares by this maker. The turning rings on the rim have not been polished out and are still visible; this would imply that the plate was wigggleworked at the time of manufacture.

242

A pair of late 17th Century multiple reeded plates
Each with touchmark of Thomas Shackle (1675-1709), London, (OP 4207), *diameter 9½ in., (2)*
£500 - 800

Thomas Shackle was an exporter of Sadware, and plates bearing his touchmark have been found at Port Royal, Jamaica.

243

A set of six mid-18th Century reeded wavy edge plates
Each with five lobes, touchmark and label to reverse of Thomas Chamberlain, (1732-1806), engraved arms within a leaf Rococo cartouche to rim, *diameter 9¾in., (6)*
£400 - 600

Dexter the arms of Madocks Fron Yw Glan Y Wern, North Wales, descendants of Sir Robert Pendeling, Constable of Dyserth Castle during the reign of Henry II (1154-1189). There are four possibilities for the female line, Lacon; Francis of Derbyshire/Essex; Calebot of Norfolk or Tityn of Ireland.

244

An 18th Century Normandy flagon
Of typical shouldered form, worn touchmark to lid, twin acorn thumbpiece with flowerhead hinge pin, *height 22.5cm*; together with an 18th century German tankard, the cylindrical drum with flat-domed lid, knopped finial, the handle cast with floral decoration, graduated 'plouk' type marks inside, *height 18cm (2)*
£100 - 200

245*

An 18th Century O.E.W.S. pint double volute baluster measure
Touchmark of William Fasson, (PS 3268), to collar, plain body, handle with ball terminal and diamond attachment, *height 14.5cm.*
£500 - 700

246*

An 18th Century O.E.W.S. half pint double volute baluster measure
The body with three bands of twin incised lines, the flat-lid with crowned WR mark, the handle with ball terminal and diamond attachment, *height 12.7cm.*
£300 - 500

247*

An 18th Century bud baluster measure, circa 1700
Touchmark of William Bankes, (OP240) Wigan/Bewdley, to reverse of lid, crowned WR mark to collar, the slender body with three bands of twin incised lines, *height 13.5cm.*
£500 - 800

248*

An 18th Century O.E.W.S. gill double volute baluster measure
With plain body, double volute thumbpiece and flat-lid with fleur-de-lys within a diamond attachment, handle with ball terminal and diamond attachment, *height 10cm.*
£250 - 350

249

A 17th Century English slip top spoon
Makers mark E.H., (PS 5032), and ownership triad 'GWI' to bowl, nature's gilding, *length 17cm*; another 17th century English slip top spoon with makers mark 'IP 16' (?) and ownership triad 'IWI' to bowl; together with three Dutch spoons, each with round bowl, some with crowned rose marks and nature's gilding; another spoon with wiggglework initials TH to end of stem and indistinct hallmarks to reverse, (6)
£200 - 300



254, 255, 256, 257, 258

250

A mid 17th Century broad rim dish
Hallmarks to rim of Ralph Marsh I, (1636-1665), (PS 6163), ownership initials also to rim, *diameter 16½in., rim 3¼in., (38%)*
£400 - 600

251

A late 18th Century single reed engraved dish
Touchmark to reverse of Stynt Duncombe, Bewdley, unusual engraved 'cartouche' and geometric decoration to rim, ownership triad to one cartouche, old ownership label 'Lawson Tait', Birmingham, to reverse, *diameter 16½ in*
£300 - 400

252

A collection of early 18th Century pewter plain rim oval and circular dishes
To include: **three large oval plain rim dishes**, each engraved with Prince of Wales feathers to rim, *diameter 22¾in and 20¾in*, together with **six plain rim circular dishes**, with the same armorial device to rim and bearing the touchmarks of Alexander Cleeve II, (OP 961), London (working 1715-1763), *diameters 18in, 16½in and 13¼in*, together with **six 18th Century various plain rim oval dishes (a/f)**, (14)
£400 - 600

253

A mixed collection of pewter
To include five 18th century plain rim plates, *diameter 9½in.*; a late 18th century single reed deep dish, *diameter 13¼in.* and eleven baluster measures, quart to quarter gill capacity, (17)
£150 - 200

254

A late 17th Century multi-reeded plate, dated 1683
Bears hallmarks of George Major, Exeter, (f.1681-1714 m.1719), (MPM 5773b) and date '1683' to rim, *diameter 9in*
£120 - 160

Provenance: Dr. R. Homer Collection.
Purchased Gardiner Houlgate, Bath, 21 October 1999, lot 296.

255

A 19th Century Irish haystack measure, noggin capacity
Touchmark to the underside of Joseph Austen and Son, Cork, 1846), verification marks to collar, *height 7.5cm*
£200 - 300

256

An 18th Century broth bowl
With mid fillet, on flared foot, *14cm diameter x 9.5cm high*
£200 - 300

Provenance: Kenneth Barkin Collection, sold these rooms May 630.

257

A mid 18th Century Jersey measure
Touchmark to underside of lid of John Le Neveu (OP 5815a), capacity, solid handle with typical twin acorn thumbpiece, crown mark to rim, ownership initials to handle, *20.5cm high*
£200 - 300

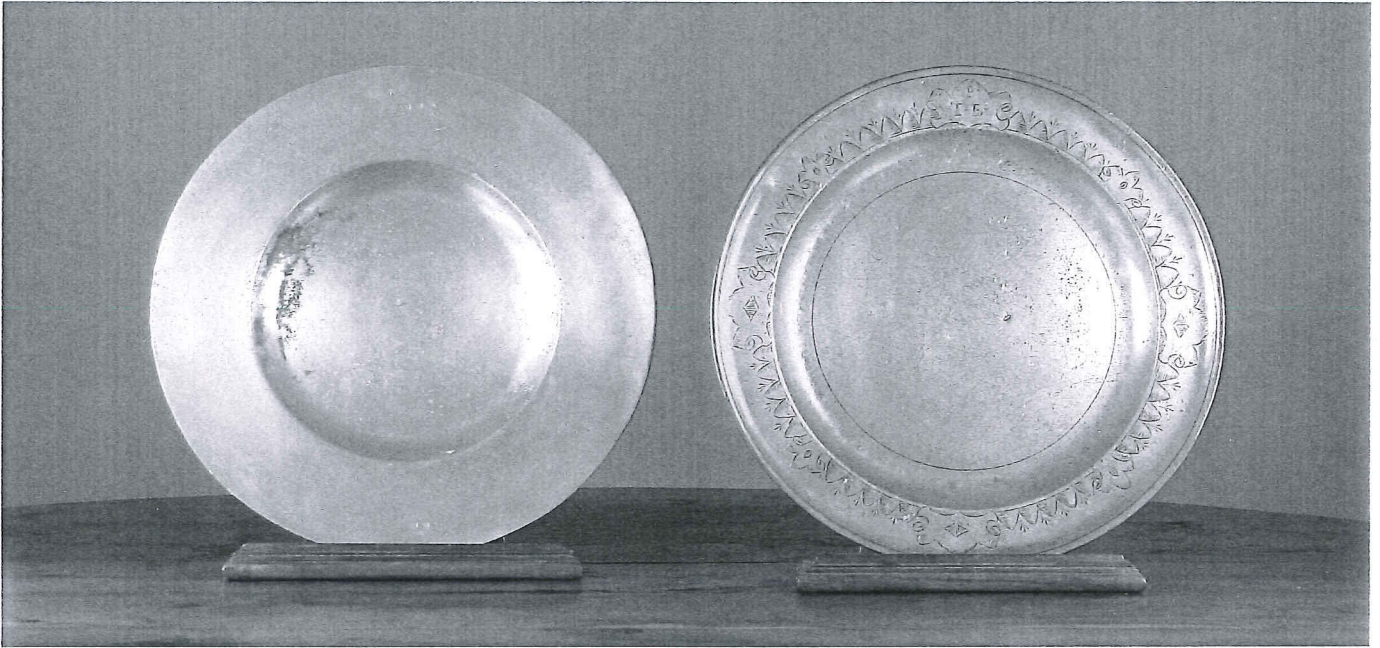
258

An 18th Century Wigan Pre-Imperial truncated quart mug
Maker's hallmark of William Bolton (1762-1789), (PS 11287), together with an unusual early 18th century Wigan pint mug, hallmarks of William Baldwin II, (1697-1733), (PS 390), (OP 21)
£100 - 150

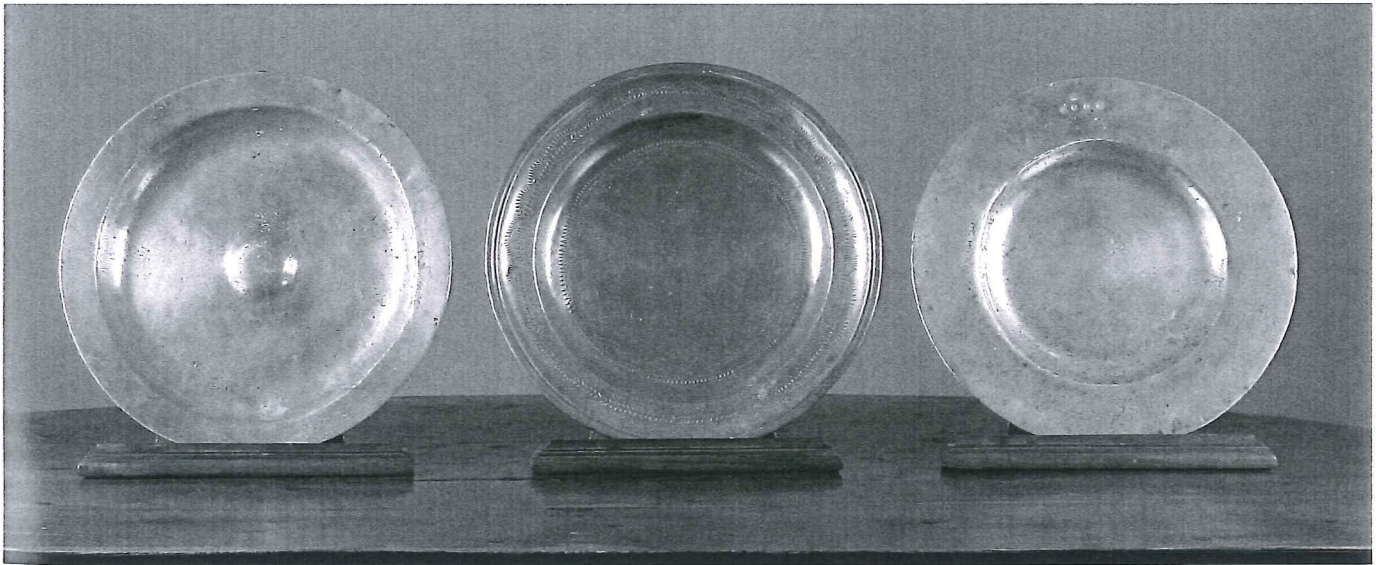
259

A mid 17th Century bossed dish
With narrow plain rim, deep booge and raised boss to centre, *13¾in*
£150 - 200

Provenance: Dr R. Homer Collection.
The shape and proportions of this dish are similar to comment dishes inset with an enamelled boss bearing the Royal Stuart Arms and the initials CR.
Dr Homer was apparently told that at one stage traces of a fleur-de-lys in a beaded circle had been visible.



250, 251



259, 260, 261

260*

A European 18th Century wrigglework dish

The well decorated with stylised tulips, the single reepled rim with saw-tooth meandering decoration, touchmark to rim possibly P. Lejeune, Mons, Belgium, *diameter 14¹/₄in*

£300 - 500

261

A broad rim dish, circa 1670

Hallmarks to rim of Anthony Jenkins, Southampton, (PS 5219), together with worn touchmark, ownership initials 'AD' over 'IH', *diameter 13³/₄in, rim 2¹/₂in, (34%)*

£150 - 200

Provenance: Dr. R. Homer Collection.

Private sale from C.A.Peal

Old inventory 'No.38', in the manner of Sutherland Graeme to rear.