

EYE

SOTHEBY'S
FOUNDED 1744

Catalogue of
English and Continental Furniture
Samplers, Textiles, Works of Art
and Metalwork

Fine Oriental Ceramics and
Eastern Works of Art

Antiquarian and Modern Books,
Original Illustrations

Eastern Carpets and Rugs

SUSSEX

Days of Sale

TUESDAY 21st JANUARY 1986 at 10.30 am and 2.00 pm

WEDNESDAY 22nd JANUARY 1986 at 10.30 am

THURSDAY 23rd JANUARY 1986 at 10.30 am

TUESDAY 28th JANUARY 1986 at 10.30 am

MARINE ITEMS

645 A wooden Model of a five-masted clipper, circa 1870, the rigged vessel with black painted wood hull and the deck with three deck houses, on a simulated sea base, in rectangular reeded and painted wood case with panelled base, 44cm. high by 72cm. wide; 17½ by 28½zin. £180-250

646 A sailor-made Model of the brig *She*, circa 1861, the solid wooden hull painted black and brown with red and gold lining, the twin masts with standing and running rigging, the deck with gunports, deck houses, winch, adjustable rudder and tiller, masts, boom, rigging distressed, on wood stand, 87cm.; 34in. long £120-180

The vessel carried limestone for smelting, plying between various ports in Northern Ireland. This model was built by Sir Arthur Hill Coates in 1861

647 A Model of a two-masted barque, early 20th Century, the solid black painted wood hull with deck details, including: winching gear, deck houses, bridge and masts with rigging, on rectangular wood base, 77cm.; 30in. long overall £100-150

648 A Model of the three-masted brig *Majon*, 20th Century, the vessel with solid black and red painted hull, masts with rigging, deck features, including: winching gear, deck houses, bridge, etc., on rectangular wood base, 127cm.; 50in. long overall £120-180

649 A Model of the three-masted sailing ship *Daphne*, 20th Century, with solid grey and red painted hull and deck features, including: four lifeboats, winching gear, bridge and deck houses, with full rigging, in rectangular glazed case, 98cm.; 38½zin. long £120-180

650 A silkwork and montage Model of the sail-assisted steam-driven merchantman *Plainmeller*, British, late 19th Century, the two-masted vessel flying the Red Ensign and two other merchant flags and with sails up, worked in relief on a blue silk background, inscribed in silk PLAINMELLER, LONDON, C. STEPHENSON COMMANDER, 57 by 34cm.; 22½ by 13½zin., in glazed wood frame £350-500

651 An embossed brass Lord Nelson Box, early 19th Century, the lid with a relief portrait of Nelson, the reverse inscribed *Conqueror at Aboukir 1798, Copenhagen 1801, Trafalgar 1805 where he gloriously fell*, 6.5cm.; 2½zin. £100-150

652 A scrimshaw Whale Tooth, 19th Century, engraved with ships of the line and a South Sea island shoreline, 14cm.; 5½zin. £50-100

653 A whalebone Walking Stick, mid-19th Century, with twist turned stem and open frame reeded stem section and octagonal faceted handle inlaid with tortoiseshell, 97cm.; 38in. £120-180

PEWTER

654 A Swiss six-sided spouted Glockenkanne, late 18th Century, with screw top and engraved ownership initials, 27cm.; 10½zin.; a German hinged-lid Tankard with ball thumbpiece, the lid engraved 1804, the sides with engraved vases and scene of a couple in a landscape, some dents, 24cm.; 9½zin.; and a double-eared Porringer, crowned rose quality touch to one ear, 23cm.; 9in. across (3) £100-150

655 ■ A small pair of Candlesticks, German, circa 1780, with baluster stems and beaded domed bases, 10cm.; 4in.; a Coffee Pot, Dutch, circa 1800, 12cm.; 4½zin.; two Peppers, 18th Century; a Swiss six-sided Flask, 10cm.; 4in.; a French long-spouted Pot; an Inkwell in the form of a swan with hinged lid, 13cm.; 5in.; and two Rabbits (10) (part illustrated) £120-180

656 A pair of pint tavern Mugs, circa 1850, with reeded bands and owner's monograms; four other pint Tankards; and two half-pint Tankards, 19th Century (8) £60-100

657 A pewter Charger, circa 1740, by *Edmund Harvey*, plain rim with touches *E.H.* to reverse, 46cm.; 18in. £60-100

658 A Charger, circa 1700, with multi-reeled rim, the front rim with touch of *D.R.* and other 'hallmarks', the reverse with crowned rose touch of '*... Roe*', 51cm.; 20in. diam. £120-180

659 A set of three wavy-edged beaded rimmed oval Dishes, mid-18th Century, with the touch of *John Carpenter* to reverse and crests to the front rims, 31cm.; 12½zin. £120-180

660 A multi-reeled rim Charger, English, early 18th Century, ownership triad on rim, indistinct marks to reverse, some flaking, 38.5cm.; 15¼in.; a Continental Plate, late 18th Century, 30cm.; 11¾in.; and two further smaller Continental Plates (4) £100-150

661 A pewter Salt, Continental, early 18th Century, with octagonal beaded rim and domed octagonal beaded base, 7cm.; 3in. £40-80

662 A pewter Charger, English, 18th Century, indistinct touches to reverse, some flaking, 42cm.; 16½zin.; together with an Imperial quart Measure; a Yates & Bich pint Measure; and a Cream Jug, 19th Century (4) £100-150

BRASS, COPPER AND IRON

665 A Victorian pierced brass Footman, circa 1850, the pierced rectangular top with fluted side handles above a pierced apron and cabriole legs, 30cm.; 12in.; together with a pair of Adam-style brass Candlesticks, 13cm.; 5½zin. (3) £150-200

666 A copper Kettle, early 19th Century, 22cm.; 8¾in.; a brass chamber Candlestick and Snuffer, early 19th Century; a plated Teapot; and a wrought-iron Lock and Key, early 18th Century, the lock with decoratively scrolled plate, 20cm.; 8in. (4) £100-150

667 A brass Chestnut Roaster, Dutch, late 17th/early 18th Century, the hinged lid embossed and pierced with a fleur-de-lis in a gadrooned border, with wrought-iron handle, 63cm.; 25in. long; together with a bell-metal Skillet, on three feet, the handle cast with maker's name *Warner, I.P.*, 29cm.; 11¼in. (2) £160-220

668 A brass and iron Trivet, English, circa 1780, with pierced semi-circular top and turned wood handle, on three wrought-iron legs with cross-stretchers, 30cm.; 12in. £120-180

669 A brass and copper Tobacco Box, Dutch, 18th Century, with embossed lid and base, rubbed, and ribbed sides, 16cm.; 6¼in. £60-90

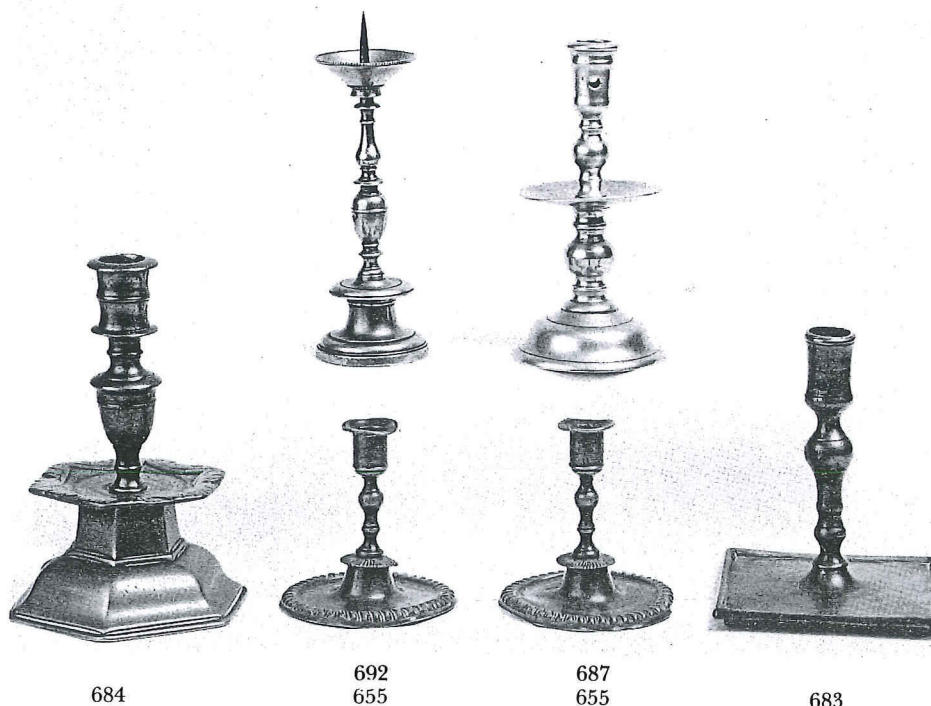
670 An oval brass Tobacco Box, Dutch, 18th Century, the lid and base engraved with scenes of Christ as the good shepherd flanked by figures and foliage, 12.3cm.; 5in. £120-180

671 An Iserlohn embossed brass and copper Tobacco Box, mid-18th Century, the lid with a portrait of Frederick II King of Prussia, the reverse with six battle scenes of 1756 and 1757, including victories by Lissa, Rosbach and Lowositz, 16cm.; 6¼in. £180-220

672 A bell-metal Mortar, probably German, late 17th Century, with incised stylised leaf decoration to the body, cast rectangular handles and spreading reeded foot and base, 16cm. high by 15cm. diam.; 6¼ by 6in.; together with associated brass Pestle, 25cm.; 10in. £100-150

673 A brass eighteen-branch Electrolier, Russian, circa 1900, the chandelier with a lower tier of twelve 'S'-shaped arms with wide drip-pans and similar upper tier of six arms, crested by a spread-eagle finial and with large ball-shaped base £400-600

674 A large Victorian copper Kettle, circa 1850, with brass finial and brass mounted central carrying handle and 'S'-shaped spout, 38cm.; 15in. £100-150



675 A bronze Mortar, Flemish, late 17th/early 18th Century, with flared lip, single foliate band to waist and reeded base, 13cm.; 5in. high, with associated Pestle, rubbed patination £70-100

676 A brass Doofpot, Dutch, 18th Century, the ashbin of cylindrical tapering shape with domed lid and swing carrying handle, on three turned feet, 28cm.; 11in.; together with a copper and brass riveted Dairy Pail, 19th Century, of cylindrical shape, with swing carrying handle, 21cm.; 12in. (2) £100-200

677 A Georgian copper and brass Tea Urn, circa 1800, of classical vase shape, with domed lid and urn finial, beaded loop side handles and rectangular base with pierced apron and ball feet, 41cm. 16in. £100-150

678 A Dutch brass oval Tobacco Box, 18th Century, engraved with a tavern scene and a motto of the benefits of drink, 12cm.; 4³/₄in.; another engraved with figures in cartouches, the sides with foliate scrolls, 14cm.; 5¹/₂in.; and a copper and brass Tobacco Box, engraved with animals and inscriptions, 16.5cm.; 6¹/₂in. (3) £100-200

679 A brass Trivet, circa 1800, the solid top above a shaped apron, on cabriole legs with shaped brass cross-stretchers, 40cm.; 16in. high £80-120

680 A Georgian copper Tea Urn, circa 1800, the urn-shaped vessel with caryatid side handles and dolphin finial, with inner sleeve and brass spout, on rectangular beaded base, 40cm.; 15¹/₂in. £150-200

681 A copper rectangular Tobacco Box, Dutch, early 18th Century, the lid engraved with a gentleman in courtly dress brandishing a sword, the reverse with naked women within cartouches, 13cm.; 5¹/₄in. £100-150

682 A pair of brass altar pricket Candlesticks, Continental, early 18th Century design, each with bulbous drip-pan and twist turned stem, on vase-shaped knop and triangular base cast with angel masks with claw and ball feet, 42cm.; 16¹/₂in. £150-200

683 A collection of three brass/pale bronze Candlesticks, Spanish, late 17th/early 18th Century, each with single aperture to the socket, pear-shaped knopped stems and screw-in construction to flat rectangular bases with peg feet, 15 to 13cm.; 6 to 5in., one illustrated (3) £150-200

684 A brass Candlestick, Continental, 17th Century, with vase-shaped knopped stem and reeded nozzle, on six-sided spreading domed base with central grease pan, 19cm.; 7¹/₂in. £200-300

685 A pair of Georgian brass Candlesticks, circa 1740, each with flared nozzle, large 'mushroom' knops and baluster stems, on rectangular bases with indented corners, 17cm.; 6³/₄in. £200-300

686 A pair of Georgian brass Candlesticks, circa 1770, of Corinthian column form, with seamed reeded stems and gadrooned square spreading bases, 25cm.; 10in. £80-120

687 A 'Heemskerck' brass Candlestick, Dutch, late 17th Century, with baluster stem and wide grease pan and domed foot, 18cm.; 7in. £100-150

688 A rare pair of Georgian brass Candlesticks, circa 1740, by William Lee, with double knopped stems, rectangular drip-pans with reeded corners and similar shaped rectangular bases with reeded corners, the bases impressed W^m. Lee, 19cm.; 7¹/₂in., old solder repairs £300-500

689 A pair of Georgian mahogany and brass Candlesticks, circa 1780, the reeded brass tops above reeded and fluted swirled columns, on circular spreading bases above square bases, 30cm.; 12in. £250-400

690 A pair of ormolu Candlesticks, French, early 19th Century, with detachable drip-pans and acanthus decorated nozzles and spreading circular bases, stems replaced and reduced, 17cm.; 6³/₄in.; together with a pair of Elkington & Co. ormolu Candlesticks of rococo design, with swirled stems and bases, plaque to base inscribed Elkingtons, Art Gold Bronze, Registered, 32cm.; 12¹/₂in. £100-200

691 A pair of Georgian brass Candlesticks, circa 1800, with classical reeded columns and square bases, 27cm.; 10¹/₂in.; together with a pair of bell-metal Candlesticks, with hexagonal tapering stems and spreading hexagonal bases, 25cm.; 10in., 19th Century (4) £100-200