



Days of Sale

---

WEALDEN ROOM

## English and Continental Furniture

Tuesday 15th September 1987 at 10.30 am

WEALDEN ROOM

## Textiles, Works of Art and Metalwork

Tuesday 15th September 1987 at 2.00 pm

On View: Friday 11th September 1987, 9.30 am–4.30 pm,  
Saturday 12th September 1987, 9.30 am–12.30 pm and Monday 14th September 1987, 9.30 am–4.30 pm

---

ANDERIDA ROOM

## Antiquarian and Modern Books, Original Illustrations

Wednesday 16th September 1987 at 10.30 am

On View:

Friday 11th September 1987, 9.30 am–4.30 pm, Saturday 12th September 1987, 9.30 am–12.30 pm,  
Monday 14th September 1987, 9.30 am–4.30 pm and Tuesday 15th September 1987, 9.30 am–4.30 pm

---

CISSBURY ROOM

## Fine British and Continental Glass and Ceramics

Thursday 17th September 1987 at 10.30 am

On View:

Friday 11th September 1987, 9.30 am–4.30 pm, Saturday 12th September 1987, 9.30 am–12.30 pm,  
Monday 14th September 1987, 9.30 am–4.30 pm and Tuesday 15th September 1987, 9.30 am–4.30 pm

---

WEALDEN ROOM

## Eastern Carpets and Rugs

Tuesday 22nd September 1987 at 10.30 am

On View: Friday 18th September 1987, 9.30 am–4.30 pm,  
Saturday 19th September 1987, 9.30 am–12.30 pm and Monday 21st September 1987, 9.30 am–4.30 pm

---

which will be sold  
by

**SOTHEBY'S**  
FOUNDED 1744  
**Sussex**

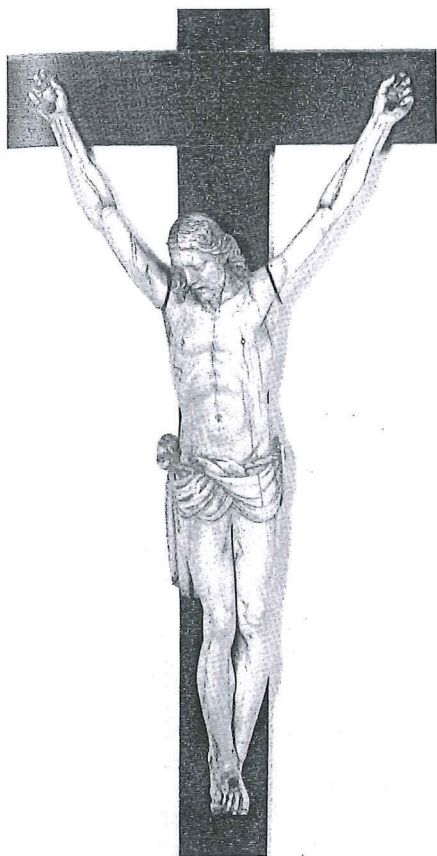
Summers Place, Billingshurst, West Sussex RH14 9AD

Telephone: (040381) 3933


Telex: 87210 GAVEL

Illustrated Catalogue £5.00

Sotheby's London: Registered at 34-35 New Bond Street, London W1A 2AA  
No. 87486




622

619  A pair of Dieppe bone veneered Mirrors, mid-19th Century, each oval bevelled plate in leaf encrusted frame mounted with pierced shields and putti, the top shield inscribed *Montioye St. Derys*, 86cm.; 34in. £800-1,200

620 An Anglo-Indian ivory and bone veneered rectangular Casket, late 18th/early 19th Century, all-over engraved with bands of foliate strapwork and gadrooning and views of temple gardens, 30cm.; 11<sup>3</sup>/<sub>4</sub>in. diam. £120-180

621 An ivory Knife Handle, 17th Century, carved in relief with the Adoration, distressed, 6cm.; 2<sup>1</sup>/<sub>2</sub>in.; an ivory group of the Virgin and Child, 19th Century, 5cm.; 2in.; a bone handled Knife, 18th Century; a wood Needle Case; and a small antique bronze Figure, possibly Greek, 8cm.; 3in. (5) £100-150

622  An ivory Crucifix, Flemish, late 17th Century, Christ with head lowered, wearing knotted loin cloth, mounted on later ebony cross, the ivory 30.5cm.; 12in. £500-800

623 An ivory relief Bust of Christ, late 17th Century, depicted with head to sinister, with long hair and wearing classical toga, 8.5cm.; 3<sup>1</sup>/<sub>2</sub>in. £80-120

624 C. Caruson. A Painting on ivory, depicting a kneeling saint in a landscape inscribed *Vincenti Desiderii Votum Francie Expressum Manu* and signed *C<sup>lo</sup> Caruson, Roma, 1883*, 28 by 18cm.; 11 by 7<sup>1</sup>/<sub>4</sub>in., in carved wood frame £200-300

625 A painted stone and composition Plaque of Christ as man of sorrows, with relief carved border, 76cm.; 30in. high by 56cm.; 22in. wide, in oak frame £200-300

626 After George Morland. A sand Picture of pigs in a sty, circa 1800, a donkey surveying the scene from the sty gate, 39 by 31cm.; 15<sup>1</sup>/<sub>2</sub> by 12in., in glazed wood frame £100-150

627 A large sand Picture of Daniel in the lions' den, early 19th Century, the praying figure surrounded by snarling beasts, 68 by 53cm.; 35 by 21in., in glazed frame £300-500

628 A collection of six framed and glazed Stevengraphs, woven in silk, comprising: *The Good Old Days* (Royal Mail Coach), *The Present Time* (locomotive), *The Meet* and *The Death, The Start* and *The Water Jump*, each with original label to reverse £200-300

629 A pair of giltwood Candlesticks, Italian, of baroque design, with brass nozzles above foliate stems with scrolled tripod bases, 30cm.; 12in.; together with an embossed brass Water Stoup, converted, 19cm.; 7<sup>1</sup>/<sub>2</sub>in. (3) £120-180

630 A carved oak Wall Bracket, South German, late 19th Century, the semi-circular moulded top supported by a pelican standing amongst flowers and bulrushes, 41cm.; 16in. £80-120

631 A carved wood Dead Game Group, South German, late 19th Century, in the form of a fox and a goose, together with hunting horn and whip, 65cm.; 25<sup>1</sup>/<sub>2</sub>in., slight damages £300-500

632 A set of four carved oak Minstrel Caryatids, 19th Century, each in 17th Century dress playing a different instrument, standing on tapered relief carved plinths, 56cm.; 22in. £120-180

633 A very large collection of approximately 1,300 fruitwood and other wood Architectural Plaster Moulds, carved with foliage, beadwork and other mouldings and architectural motifs £8,000-10,000

634 A cast-iron Hall Stand of rococo form, pierced with 'C'-scrolls on break-front base, 188cm.; 74in. high, hooks missing £150-250

635 A cast-iron Hall Stand, the arched back pierced with foliage and applied with scrolling hooks, the lower section with rail centred with a pierced roundel supported with side brackets and on rounded rectangular base with lift-out tray, 185cm.; 73in. high £250-350




640

636 A cast-iron Stick Stand, the rectangular top pierced with circles, the end supports pierced with tracery and foliage and with side handles, on rectangular base, 98cm.; 38<sup>1</sup>/<sub>2</sub>in. wide £150-250

637 An unusual cast-iron Basin Stand, with herm and foliate pierced side brackets and acanthus cast front section, surmounted by a bevelled mirror with arched cresting, 180cm.; 71in. high £80-120

#### PEWTER

640  A James I or Charles I pewter Flagon, circa 1625, the domed 'bun' lid with button finial and scrolled thumbpiece above plain cylindrical stem and domed skirt base, unmarked, 28cm.; 11<sup>1</sup>/<sub>2</sub>in. £800-1,200

641 A pair of Jersey lidded Measures, 18th Century, each of usual baluster shape with heart-shaped lid, front spout and double-acorn thumbpiece, one with ownership *E.R.R.* to handle, the other with three circular punches to lid with later ownership inscription *X.E.Q. and repair to body near handle*, 27cm.; 10<sup>1</sup>/<sub>2</sub>in. (2) £200-300

- 642 **A similar Jersey Measure, 18th Century**, touch inside lid *I.N.*, crowned *G.R.*, registration stamp to body and ownership and date *P.L.B. 1785* to handle, *repair to lid, 28cm.; 11in.* £80-120
- 643 **A Dutch Coffee Urn on Stand, 19th Century**, the pear-shaped body on three cabriole legs with brass spout and domed lid with urn finial, set on a copper and brass triangular stand with pierced gallery, *44.5cm.; 17½in. overall* £300-400
- 644 **A harlequin set of ten French metric Measures, 19th Century**, including litre to centilitre, each with variety of registration stamps; together with two small Continental Beakers, *6cm.; 2½in.* (12) £200-300
- 645 **A triple-reeded rim Dish, Continental, circa 1700**, mark to reverse ... *Ardenier* and *F* within crowned rose, *45cm.; 17.6in. diam.* £120-180
- 646 **A pair of neo-classical Candlesticks, North European, circa 1800**, each with oval base rising to slender tapering stem and detachable oval drip pan, *19.5cm.; 7½in.*; and a pair of small deep Plates, *early 19th century, 17cm.; 6½in. diam.* (4) £100-150
- 647 **A collection of Pewter, late 18th/19th Century**, including: three Irish haystack measures by *Austen & Sons*, pint, half-pint and gill, a pair of baluster stemmed candlesticks, *20cm.; 8in.*, a dish, *38cm.; 15in.* and further miscellaneous items (18) £120-180
- 648 **An English Ale Jug, circa 1800**, of usual bulbous shape with domed lid, front spout and palmette thumbpiece, *23cm.; 9in.* £120-180
- 649 **A similar Ale Jug, circa 1800**, with open chairback thumbpiece, *21cm.; 8½in.* £120-180
- 650 **An English Ale Jug, early 19th Century**, with accentuated bulbous body, domed lid and palmette thumbpiece, *17cm.; 7in.*; and another with pear-shaped body (2) £160-200
- 651 **A Townsend & Compton lidded quart Tankard, early 19th Century**, straight cylindrical sides and double scrolled handle, *20cm.; 8in.*; and another similar (2) £150-200
- 652 **A spouted lidded quart Tankard, 19th Century**, with palmette thumbpiece and plain cylindrical body, *20cm.; 8in.*; and another similar in Britannia metal (2) £120-180
- 653 **A pair of pewter Candlesticks of Georgian design**, each with petal base, slender single-knopped stem and moulded nozzle, *touch of N.R. to base, 28cm.; 11in.* £300-350
- 654 **A German pewter Oil Lamp, circa 1800**, with cylindrical reservoir, central drip tray and flat base with central slender column, *20cm.; 8in.* £100-150
- 655 **A large lidless gallon baluster Measure, late 19th Century**, various verification stamps and inscribed *One Gallon, 27cm.; 10½in.* £250-350
- 656 **A Commode Pot, circa 1800**, of bulbous shape with side handle, *16cm.; 6¼in.* £140-180
- 657 **A 'Welsh Hat' Commode, circa 1800**, of cylindrical tapered shape with wide rim, *21cm.; 8¼in.*; and a Spittoon by *Birch & Villiers, 21cm.; 8¼in. diam.* (2) £150-200
- 658 **A bow-front miniature Chest of Drawers, circa 1850**, of two short and two long drawers with beaded rim, on ball feet, *15cm.; 6in.* £120-160
- 659 **A pair of pear-shaped Feeding Bottles, early 19th Century**, each with screw top, *14cm.; 5½in.*; together with a pair of Pap Boats, *19th Century*, with crowned *X* stamps, *10.5cm.; 4¼in. long* (4) £250-300
- 660 **A German rococo Coffee Pot, late 18th Century**, of wrythen pear-shaped form with domed lid and raised base, *26cm.; 10in.* £120-160
- 661 **A bulbous lidless Ale Jug, English, early 19th Century**, with front spout and plain loop handle, *18cm.; 7¼in.*; and two Victorian Jelly Moulds with fruit embossed tops (3) £120-160
- 662 **A Cup Salt, mid-18th Century**, the rim inscribed with ownership *G.L.C.*, on short stem and circular base, *6.5cm.; 2¾in.*; a pair of Cup Salts, *19th Century*; and another pair in Georgian design (5) £100-150
- 663 **A painted pewter shoe Snuff Box, Dutch, early 19th Century**, with hinged lid, painted in black and gold, *9cm.; 3¾in.*; and a James Dixon Snuff Box, embossed with a retriever and huntsman in a landscape (2) £80-120
- 664 **A rectangular Standish, late 18th Century**, the double-hinged top above compartmented interior, on ball feet, *18.5cm.; 7¼in.* £80-120
- 665 **A rectangular Standish, 19th Century**, with double-hinged top, compartmented interior and ball feet, *19.5cm.; 7¾in.*; and another similar by *Dixon* (2) £80-120
- 666 **A near-matched set of twelve Spoons, 19th Century**, each of slender elongated form with tapered flat handle, *20cm.; 8in.*; a Scottish lidded baluster Gill Measure; and two further Measures £100-150
- 667 **A quart Tankard and a matching pint Tankard, late 19th Century**; two further Tankards; a melon-shaped Teapot; and a Danish Art Nouveau period oval Bowl with pigeons at each end, *16.5cm.; 6½in.* £80-120
- 668 **A set of five Plates by Bush & Perkins, 19th Century**; and another similar, *23.4cm.; 9in.*; three quart Tankards (two with side spouts); a pint Tankard; a half-pint Tankard; a pair of Peppers, *10cm.; 4in.*; and two other items (15) £150-200
- 669 **A triple-reeded rim Charger, by James Butcher, early 18th Century**, *51cm.; 20in. diam.*; another Charger, possibly *John Hayton, mid-18th Century*, with single-reeded rim, *52cm.; 20in.*; and a third Charger, *mid-18th Century, 48.5cm.; 19in. diam., some corrosion and other damage* (3) £250-350
- 670 **A Normandy Flagon, early 19th Century**, of shouldered form with skirt base, rising to front spout, heart-shaped lid and double-acorn thumbpiece, *23cm.; 9in.* £100-150
- 671 **A single-reeded rim Dish, by Benjamin Withers, circa 1730**, *37.5cm.; 14¾in.*; a similar Dish, *maker's touch I.H., 34cm.; 13½in. diam.*; a Plate, by *John Tidmarsh, 24.5cm.; 9¾in. diam.*; and another Plate (4) £120-180
- 672 **A collection of Continental Dishes and Plates, late 18th/19th Century**, including: two deep dishes, *37 and 33cm.; 14½ and 13in. diam.*; and three plates, *28 and 27cm.; 11 to 10¾in. diam.* £120-180
- 673 **A collection of four Irish baluster Measures, late 19th/early 20th Century**, comprising: half-pint, noggin, half-gill, a straight-sided quarter-gill measure; and three pot-bellied lidless Measures (7) £60-90
- 674 **A spouted pear-shaped Flagon, Flemish, 19th/early 20th Century**, with shell thumbpiece and broken-arched handle, *24cm.; 9½in.*; another similar, *22cm.; 8¾in.*; and another with lid detached (3) £100-150
- 675 **A French lidded Flagon, 18th Century**, of shouldered form, with heart-shaped lid, impressed *L.G.L.* and with ridge thumbpiece, on skirt base, *22cm.; 8¾in.*; and a Belgian Wine Measure, *19th Century, 15cm.; 6in.* (2) £100-150
- 676 **A harlequin set of seven metric Measures, Flemish, 19th Century**, together with an extra Flemish half-litre Measure, *the double-litre measure distressed 26 to 5cm.; 10 to 2in.* (8) £100-150
- 677 **A collection of four Coffee Pots, Flemish, early 19th century**, each of ovoid elongated form and each with zoomorphic spout and wood handle, *maker's marks under base, each with different finial to lid, 29 to 26cm.; 11½ to 10in.* (4) £100-150



691

687

653

687

690

678 A collection of Condiments, Continental 18th/19th Century, including: a baluster-shaped sifter, Dutch, 18th Century, 12cm.; 5in., three baluster or urn-shaped sifters, circa 1800, and three sifters, late 19th Century, including one in the form of a lady, 12cm.; 5in., four various plain cylindrical cup salts, 18th/19th Century, two small beakers, two Dutch urn-shaped mustard pots and four assorted lids (19) £100-150

679 A set of four Plates, mid-18th Century, maker's touch S.H. in 'hallmarks', ownership triad to reverse R<sup>G</sup>M, 23.5cm.; 9 1/4in. diam. £80-120

#### BRASS AND COPPER

682 A large six-branch brass Electrolier, circa 1900, the ball and baluster stem with ring top supporting 'S'-scrolled arms with wide drip pans and candle nozzles, 89cm.; 35in. £200-300

683 A gilded brass four-branch Chandelier, Flemish, 17th/18th Century, with multi-baluster stem, supporting a star-burst base of eight radiating oil lamp reservoirs, the top with four 'S'-shaped branches with wide drip pans and candle nozzles, 41cm.; 16in. high, now converted to electricity £100-150

684 A Flemish brass six-light Chandelier, in late Gothic style, 19th Century, the tall narrow hexagonal frame containing a figure of the Virgin and Child and surmounted by a lion finial, the arms cast with scrolling leaves and each nozzle with a crown drip pan, two drip pans and three nozzles lacking, 69cm. high; 27in.; 66cm. diam.; 26in. £200-300

685 A pair of brass ejector Candlesticks, circa 1700, each with domed circular base, cylindrical ribbed stem and with side ejector button handles, one missing, 20cm.; 8in. £150-200

686 A pair of brass Candlesticks, Dutch, 18th Century, each with baluster stem above square base, raised on paw feet, 21cm.; 8 1/4in. £250-350

687 A pair of Georgian brass Candlesticks, circa 1750, each eight-lobed petal base rising to double-knopped stem, moulded nozzle and integral petal-shaped drip pan, 20cm.; 7 3/4in. £250-350

688 A pair of Georgian brass Candlesticks, circa 1760, each square domed base with cut-corners rising to a double-knopped stem and moulded nozzle, 16.5cm.; 6 1/2in. £150-250

689 A near-pair of Georgian brass Candlesticks, circa 1740, each domed petal base rising to double-knopped stem and moulded nozzle, 18.5cm.; 7 1/4in.; together with a single Georgian brass Candlestick (3) £250-350

690 A pair of Georgian brass Candlesticks in Louis XV design, mid-18th Century, each domed circular faceted base rising to double-knopped faceted stem, moulded nozzle and lobed detachable drip pan £300-500

691 A pair of Georgian brass Candlesticks of neo-classical design, circa 1780, each square gadrooned base rising to reeded stem and moulded nozzle, drip pans lacking, 28cm.; 11in. £250-320

692 A similar pair, 27.2cm.; 10 3/4in. £250-320

693 A pair of baluster stemmed brass ejector Candlesticks, circa 1810, each with square domed base and moulded nozzle, 22.5cm.; 9in.; and a pair of neo-classical Candlesticks, with square bases, 15cm.; 6in. (4) £100-150

694 A pair of brass Tapersticks of Georgian design, each with shell base and knopped stem, 13.5cm.; 5 1/2in.; and four further small single brass Candlesticks, 19th Century (6) £100-150

695 A Georgian brass Candlestick, circa 1750, the petal base rising to knopped stem, moulded nozzle and petal-shaped top, 21cm.; 8 1/4in. £70-100

696 A pair of Georgian brass ejector Candlesticks, circa 1790, each circular domed base rising to plain tapering stem and moulded campana-shaped nozzle, 29cm.; 11 1/2in. £60-100