

EXQ

Days of Sale

CISSBURY ROOM

Good Silver and Plate

Wednesday 25th July 1990 at 10.30 am

BLACKDOWN ROOM

Miniatures, Walking Canes, Silver Smallwork, Pipes and Objects of Vertu

Wednesday 25th July 1990 at 1.00 pm

On View: Friday 20th July 1990, 9.30 am–4.30 pm,

Saturday 21st July 1990, 9.30 am–12.30 pm, **SUNDAY 22nd JULY 1990, 2.30–5.00 pm**

Monday 23rd July 1990, 9.30 am–4.30 pm and Tuesday 24th July 1990, 9.30 am–4.30 pm

WEALDEN ROOM

Antique, Decorative and Country Furniture

Tuesday 31st July 1990 at 10.30 am

Metalwork, Textiles and Works of Art

Tuesday 31st July 1990 at 2.00 pm

On View: Friday 27th July 1990, 9.30 am–4.30 pm,

Saturday 28th July 1990, 9.30 am–12.30 pm and Monday 30th July 1990, 9.30 am–4.30 pm

CISSBURY ROOM

Glass, English and Continental Ceramics

Wednesday 1st August 1990 at 10.30 am

On View:

Friday 27th July 1990, 9.30 am–4.30 pm, Saturday 28th July 1990, 9.30 am–12.30 pm,
Monday 30th July 1990, 9.30 am–4.30 pm and Tuesday 1st August 1990, 9.30 am–4.30 pm,

which will be sold

by

SOTHEBY'S
FOUNDED 1744

Sussex

Summers Place, Billingshurst, West Sussex RH14 9AD

Telephone: (0403) 783933

Telex: 87210 GAVEL

Fax: (0403) 785153

Illustrated Catalogue £5.00

Sotheby's London: Registered at 34-35 New Bond Street, London W1A 2AA
No. 1222607

Front cover: Lot 109

Back cover: Lots 427, 433, 438, 440, 441, 444, 445 and 446

Frick Art Reference Library

SPECIAL VIEWING
Sunday 22nd July
2.30 to 5.00 pm



1835



1837



1839 A Pair

1833 A pair of cast iron Urns, each of semi-lobed campana form with egg and dart moulded rim, on rising circular foot and square base, 64cm.; 25in. £400-500

PEWTER

1835 □ An English pewter Dish, circa 1730-60, with single reeded rim, decorated with punched floral decoration, the well embossed with a portrait bust of Frederick Adolphus (1696-1763) and engraved with a royal crown, indistinct touch adverso, 33cm.; 13in. diam. £300-500

Frederick Adolphus was Elector of Saxony and King of Poland, 1733-63, Patron of the Arts and Founder of the Saxon Military Order of Saint Henry in 1739.

1836 A pewter Chalice, English, 18th Century, with domed foot, knopped stem and tapering cylindrical body, 16.5cm.; 6½in. £100-150

1837 □ A pewter Passover Dish, mid-18th Century, the dish made by John Perry, O.P. 3625, the front engraved with scenes from the Old Testament and the rim with a Hebrew inscription, 34cm.; 13½in. £1,000-1,500

1838 A smaller Continental Passover Dish, with six-pointed star inscribed A.V.L. 1716, the touch of T. Hermann adverso, 23cm.; 9in. £200-300

1839 □ A pair of German lidded straight-sided Tankards by the maker I.M., 18th Century, each with ball knob finial and scroll thumbpiece, the handle with three stamped touchmarks of I.M. 1765, the bodies with inscribed ownership and dated 1737 and 1719 respectively, 51cm.; 20in. £800-1,200

1840 An English spouted spire Flagon, 2nd half 18th Century, with knopped finial, domed lid, open chair-back thumbpiece and tapering body with central reeded girdle, 28cm.; 11in. £150-200

1841 □ A Swiss Flagon, 1st half 18th Century, the body of bulbous shouldered form, raised on hollow skirt base with incurved neck and everted collar, the heart-shaped lid with a ram's-head finial and twin acorn thumbpiece and with ownership and partially illegible initials, 28cm.; 11in. £400-600

1842 □ A Normandy Flagon, late 18th Century, the baluster body on domed skirt; the heart-shaped lid stamped with the initials C.B. and the maker touch N(?)S and with twin acorn thumbpiece, 31cm.; 12in. £300-500

1843 A near pair of lidded Measures, North France, early 19th Century, each of shouldered form, with heart-shaped lid and twin acorn thumbpiece and with ownership initials to handle, 27cm.; 10½in. £400-600

1844 A French lidded metric Measure, 19th Century, of one-litre capacity, 20cm.; 8in. £100-150

1845 A French two-handled Bowl, late 18th Century, with reeded wavy-edged rim, 31cm.; 12in. diam.; together with a single reeded rim Bowl, 26cm.; 10in. diam. (2) £120-180

1846 An English pewter Dish by Edmund Harvey, 18th Century, with single reeded rim, touch adverso O.P. 2185, 34cm.; 13½in. £80-120

1847 A Northern European lidded Tankard, 18th Century, the straight-sided cylindrical body with wrigglework engraved wheatsheaf and tulips, on three ball feet, the handle with maker's initials S.E.S., the half-domed lid centred by a relief bust of Martin Luther, minor damages, 19.5cm.; 7¾in. £150-200

1848 A Continental pewter Ewer, 18th Century, with domed foot, ball knob stem and bulbous body rising to spouted body and scroll handle, 30cm.; 11¾in. £300-400

1849 A single reeded rim Bowl, English, 18th Century, the rim with ownership triad C^FE and indistinct 'hallmarks' adverso, 46cm.; 18in. diam. £100-150

1850 A Stuart triple reeded rim Charger by John Pettit, circa 1690, touch adverso, 'hallmarks' to rim, ownership L.M. to rim, damages and repairs, 51.5cm.; 20¼in.; and a single reeded rim Dish by John Pettit, early 18th Century, ownership triad W^PE to rim, maker's marks as above, 46cm.; 18in., Cottrell O.P. 3638 (2) £250-350

1851 A set of three single reeded rim Dishes, English, 1st half 18th Century, each with ownership triad I^CA to rim, indistinct touches adverso, damages and repairs, two 42cm.; 16½in., one 38cm.; 15in. (3) £250-350

1852 A double-flapped rectangular Inkstand, one side for pens, the other fitted for sand and ink in three compartments, on half-ball feet, 20cm.; 8in. £150-200

1853 A Georgian Tankard by Thomas Smith, circa 1760, the straight-sided vessel on moulded foot rim, inscribed Dorothy Criswell, Red Lyon, Ivey Bridge, Strand and ownership D.C. to handle, touch inside base Cottrell O.P. No. 4391, some corrosion, 16cm.; 6¼in. £300-400

THE FOLLOWING FOUR LOTS ARE FROM THE COLLECTION OF THE LATE FREDERICK JAEGER:

1854 ◻ A fine Stuart Tankard by the maker R.B., circa 1680/90, the half-domed flat cover stamped with ownership E.B. and having front denticulations to reeded brim and 'ram's horn' thumbpiece, the hammered plain body with 'hallmarks' of R.B., on a moulded foot, touch inside base of R.B. and a bird, 14cm.; 5½in. £3,000-4,000



1842

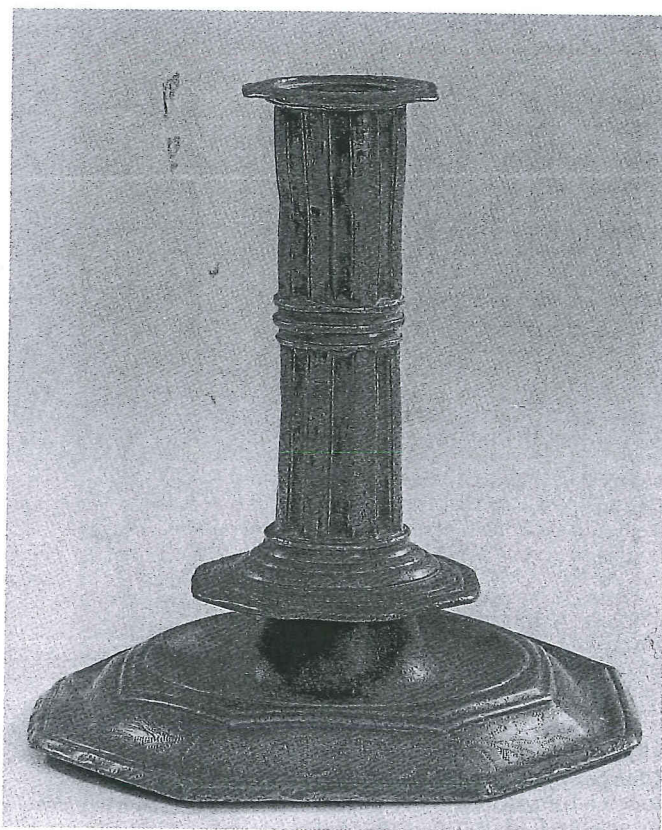
1841



1854



1855



1857



1856

1857 □ An unusual wrigglework engraved Candlestick of Charles II design, with octagonal reeded base engraved with foliage and the initials and date *L.P. 1699*, rising to grease depression, low drip-pan and fluted column with a moulded girdle, touch mark of *John French (1630-75)*, *O.P. No. 5586*, 16cm.; 6¼in.

£1,000-1,500

This type of candlestick with a fluted column stem is sometimes considered to be of Scandinavian origin. See Sotheby's, London, 11 June 1982, lot 33, for most English 17th Century candlesticks have cylindrical stems with horizontal bands or fillets. It is also unusual to have a touch mark inside the stem which is possibly an indication of a later origin than the style suggests.

COPPER AND BRASS

1860 □ A Dutch brass bell-based Candlestick, circa 1580, with baluster stem and ribbed nozzle, on bell base, 13cm.; 5in. £250-350

1855 □ A William and Mary 'wrigglework' domed lid Tankard, circa 1695, with punched and foliate engraved double-domed lid and scroll thumbpiece above body decorated with a cockerel flanked by tulips, on reeded moulded foot, 16cm.; 6¼in. £1,500-2,500

1856 □ A William and Mary 'posset' or 'caudle' Cup, circa 1690/1700, the tapering body with a band of engraved lines and gadrooned base, on moulded foot, the twin loop handles with applied moulded ball decoration, 9cm. high by 16.5cm. across overall; 3½ by 6½in. £800-1,200