

EX 0

Days of Sale

---

WEALDEN ROOM – Tuesday 5th February 1991 at 10.30 am

**Antique, Decorative, Oak and Country Furniture,  
Textiles, Works of Art and Metalwork**

On View: Friday 1st February 1991, 10.00 am–4.00 pm,  
Saturday 2nd February 1991, 9.30 am–12.30 pm and Monday 4th February 1991, 10.00 am–4.00 pm

---

CISSBURY ROOM – Wednesday 6th February 1991 at 10.30 am

**Oriental Ceramics and Eastern Works of Art**

On View: Saturday 2nd February 1991, 9.30 am–12.30 pm,  
Monday 4th February 1991, 10.00 am–4.00 pm and Tuesday 5th February 1991, 10.00 am–4.00 pm

---

WEALDEN ROOM – Monday 11th February 1991 at 1.00 pm

**Eastern Carpets and Rugs**

On View: Friday 8th February 1991, 10.00 am–4.00 pm,  
Saturday 9th February 1991, 9.30 am–12.30 pm and Monday 11th February 1991, 10.00 am–12 noon

---

ANDERIDA ROOM – Tuesday 12th February 1991 at 10.30 am

**Antiquarian and Modern Books and  
Original Illustrations**

On View: Friday 8th February 1991, 10.00 am–4.00 pm,  
Saturday 9th February 1991, 9.30 am–12.30 pm and Monday 11th February 1991, 10.00 am–4.00 pm

---

WEALDEN ROOM – Tuesday 12th February 1991 at 2.00 pm

**Maps, Views, Sporting and Decorative Prints**

On View: Friday 8th February 1991 10.00 am–4.00 pm,  
Saturday 9th February 1991, 9.30 am–12.30 pm and Monday 11th February 1991, 10.00 am–12 noon

---

CISSBURY ROOM – Wednesday 13th February 1991 at 10.30 am

**Antique Firearms, Edged Weapons, Medals,  
Militaria, Modern Firearms and Sporting Guns**

On View: Saturday 9th February 1991, 9.30 am–12.30 pm,  
Monday 11th February 1991, 10.00 am–4.00 pm and Tuesday 12th February 1991, 10.00 am–4.00 pm

---

which will be sold

by

**SOTHEBY'S**  
FOUNDED 1744

**Sussex**

Frick Art Reference Library

Summers Place, Billingshurst, West Sussex RH14 9AD

Telephone: (0403) 783933

Fax: (0403) 785153

Illustrated Catalogue £10.00

Sotheby's London: Registered at 34-35 New Bond Street, London W1A 2AA  
No. 1222607

Front Cover: Lot 179

Back Cover: Lots 173, 176, 177, 201



312

308 A Coptic stone Crusie Lamp, the body and spout with circular and criss-cross engraved decoration, on spreading foot, 11cm.; 4½in.; and two others, similar (3) £600-900

309 A Limoges rectangular Panel, 19th Century, depicting the bust of 'Jean de Leyde' seated at a table, signed by A. Wegraver and monogrammed L.L., 24 by 19cm.; 9½ by 7½in., in ebonised frame £400-600

310 A pair of giltwood and gesso Figures of angels, each winged angel with hands outstretched, 30cm.; 12in. £200-300

311 A German ivory crucifix Figure, Christ with knotted perizonium on ebony veneered cross, 51cm.; 20in. overall, the ivory 18cm.; 7in. £300-400

312 A bronze Door Knocker of Venetian 16th Century design, late 18th/early 19th Century, in the form of the naked figure of Neptune flanked by sea horses, 37cm.; 14½in. £400-600

313 A Venetian bronze Inkwell and Cover of Renaissance design, 19th Century, the well cast with angel masks on three horse-head feet, the cover surmounted by a winged putto, 15cm.; 6in. £200-300

314 A bronze Casket, German, circa 1641, rectangular with riveted panels, strapwork hinges and swing handle, with engraved 'wriggled' decoration and dated 1641, 15cm.; 6in., locked £400-600



314



320

315 An oak Figure of an eagle, probably from a lectern, 18th/19th Century, with wings spread and head to one side, 51cm.; 20in. £500-800

316 A carved sandstone Celtic Parapet Head, possibly 13th Century, 37cm.; 15in. £250-350

317 A Continental engraved Turtle Shell, dated 1673, the shell decorated with coats-of-arms, grotesque masks, lions rampant, etc., 42cm.; 16½in. £700-1,000

#### PEWTER

318 A French pewter Cimarre or Flagon, 18th Century, the domed cylindrical foot with tall baluster body and domed lid with twin acorn thumbpiece, the swing handle joined to the rim by human masks and stamped N.G., 25.5cm.; 10in. £400-600



317

319 A French lidless Water Jug, 18th Century, the bulbous pot-bellied spouted jug on domed foot, the loop handle with ball-ridged thumbpiece, 18cm.; 7in. £120-180

320 A George I pewter Tankard by Richard Going, circa 1725, with double domed lid and straight-sided tapering body applied with a single raised fillet, the brim engraved with ownership initials T.W.I., maker's touch inside base, 17cm.; 6¾in. £700-900

Illustrated in *British Pewter* by R. F. Michaelis, page 60.

Ex C. C. Minchin Collection.

321 An English pewter Charger, circa 1700, with single reeded rim, indistinct hallmarks to rim and ownership triad S.S.E., 51.5cm.; 20½in. diam.; together with another Charger, 18th Century, 51.5cm.; 20½in., apparently unmarked (2) £400-600

322 An oval Dish by Richard Going, 18th Century, engraved crest of ostrich to rim, touch adverso [O.P. 1909], 56cm.; 20in. £150-200

323 A spouted pewter spire Flagon, late 18th Century, the domed lid with open chair-back thumbpiece above straight-sided tapering body and domed foot, the handle of 'broken' double scroll form, 31cm.; 12in. £300-500

324 A pair of Chalice, late 18th Century, each 'U'-shaped bowl on a knopped slender stem and domed foot, 21.5cm.; 8½in. £250-350

325 A pair of shallow Bowls by Compton of London, circa 1800, touch marks adverso, 24cm.; 9½in.; and a wavy-edged Plate, English, circa 1760, 24cm.; 9½in. (3) £80-120

326 A Continental wrigglework engraved Dish, decorated with two regal figures and a lion and bearing the date 1713, the border with stylised tulips, 40cm.; 16in. diam. £200-300



327



337

338

327 ■ A pair of octagonal Alms Dishes, late 18th Century, with moulded rims and reeded border enclosing shell motifs, the deep 'well' with high boss in the centre engraved *St. Martin, Outwich 1798*, 29cm.; 11<sup>1</sup>/<sub>4</sub>in. diam. (2) £700-900

Formerly lot 86, Sotheby's Bond Street, 9 July 1970.

A pair of alms dishes of similar general character are illustrated in the exhibition catalogue of *British Pewterware down the Ages*, Reading Museum, 1969, No. 161.

328 A set of six Plates by *Adrian Klinling*, Continental, late 18th Century, each with wavy edge, 24cm.; 9<sup>1</sup>/<sub>2</sub>in. diam.; and a similar Dish, 36cm.; 14<sup>1</sup>/<sub>2</sub>in. (7) £250-350

329 A pair of pewter Candlesticks, the 18th Century double knopped stems on later domed bases, 15cm.; 6in. £100-150

330 A Stuart wrigglework flat-lid Tankard by the maker *John French*, circa 1680, the cover with scroll thumbpiece and front denticulations, the lid decorated with a flowerhead, the body with tulips and flowers, touch inside base and three stamps on lid [O.P. 5591], restored at handle joints, 18cm.; 7in. £1,000-1,500

331 A pair of Scottish Communion Cups, late 18th Century, with demi-ovular bowls, raised on knopped stems and shallow domed bases, 20.5cm.; 8in. £150-250

332 A 'wriggleworked' Marriage Plate by the maker *T.R.*, late 17th Century, with multiple reeded rim, the well wrigged with a stylised scrolling pattern, 'hallmarks' possibly *Thomas Ridding* [O.P. 3942], 21.5cm.; 8<sup>1</sup>/<sub>2</sub>in. £200-300

333 A William III domed-lid Tankard by the maker *T.P.*, circa 1690-1700, with twin cusped thumbpiece and fretted denticulations to brim above straight-sided body with later monogram *J.J.W.*, touch mark [Cott. 5857a] inside base, upper dome replaced, later frontal spout removed and infilled, 18cm.; 7in. £200-300

334 A George II Tankard by *Richard Going of Bristol*, circa 1730-40, with double-domed cover and scroll thumbpiece, the drum with single fillet around lower waist, ownership initials *M.W.* on base, touch in base [O.P. 1909], 13.5cm.; 5<sup>1</sup>/<sub>4</sub>in. £200-300

335 A Guernsey lidded Flagon by *A. Carter*, late 18th Century, of usual pear shape with two bands of moulding to body, heart-shaped lid with touch of *A.C.* and twin acorn thumbpiece, 23cm.; 9in. £200-300

336 A collection of four assorted Tavern Mugs; eight assorted pot-bellied baluster Measures; and four Side Plates, late 18th and 19th Century (a.f.) (16) £150-200

337 ■ A Charles I lidded Flagon, circa 1630, the tall slightly tapering body with a knopped 'muffin' lid, erect heart-pierced thumbpiece and domed foot, 35cm.; 13<sup>3</sup>/<sub>4</sub>in. £2,800-3,500

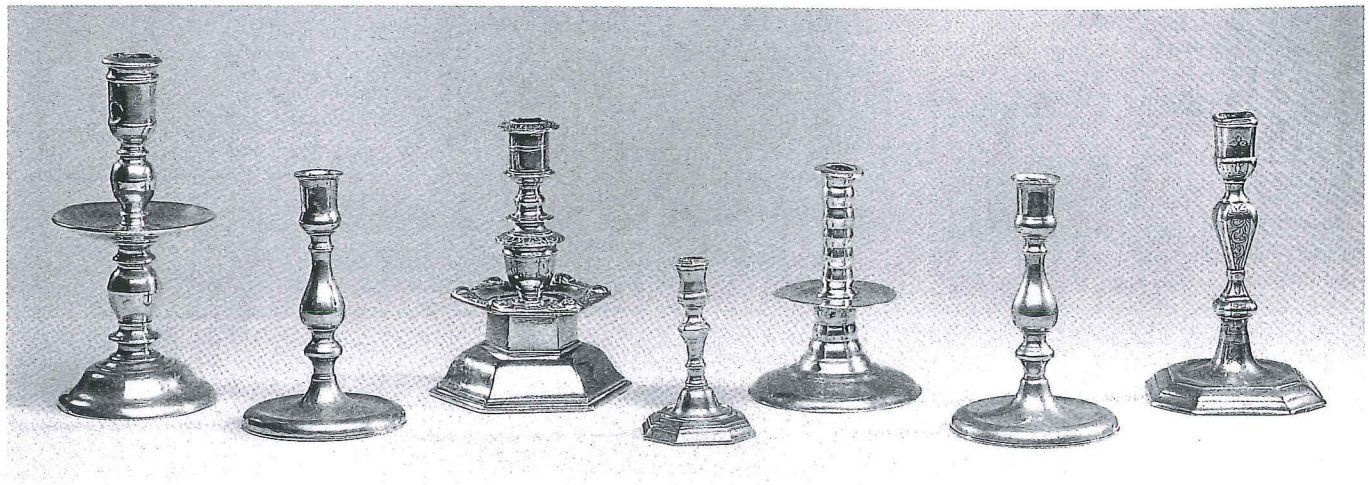
338 ■ A James I Flagon, circa 1620, the slightly tapering body on plain domed foot, with a knopped 'bun' lid and ridged scroll handle, 29cm.; 11<sup>1</sup>/<sub>2</sub>in. £2,000-2,500

339 A domed-lid Tankard by *William Eddon*, early 18th Century, with straight-sided tapering body applied with a single girdle, double-domed lid, plain scroll thumbpiece and 'hallmarks' to body, 16cm.; 6<sup>1</sup>/<sub>2</sub>in. £300-500

340 A rectangular Standish, circa 1720, the flat base on ball feet, with lidded pen-tray behind and nozzles for ink, sand, candle and pens in front, sand pot lacking, 22cm.; 8<sup>1</sup>/<sub>2</sub>in. £200-300

340(a) A Plate by *Samuel Harrup*, early 18th Century, corroded, 23cm.; 9in.; a wavy-edged Plate, English, 18th Century, 22cm.; 8<sup>1</sup>/<sub>2</sub>in.; and a Bowl, English, late 18th Century, 30cm.; 12in. (3) £150-200

340(b) A single-reeded rim Dish, English, early 18th Century, ownership initials *E.B.* to rim, corrosion, 46cm.; 18in. diam.; and another Dish, 38cm.; 15in. (2) £150-200



347

348

350

345

351

348

346

340(c) A pair of Chalice, circa 1780, each with tall 'U'-shaped body, on slender stem and domed foot, 19cm.; 7½in.; and a single Chalice, mid-18th Century, with flared cup and knopped stem, 23cm.; 9in. (3) £300-400

340(d) Miscellaneous Pewter, including: two quart Tavern Mugs with straight sides, 19th Century, a pint Mug, a baluster Candlestick and a Continental relief decorated Salt (5) £120-160

METALWORK

341 □ A large Dutch twenty-four-light brass Chandelier, 19th Century, with multi-baluster stem and ball base, supporting four tiers of 'S'-shaped branches terminating in wide drip-pans, with turned nozzles, 107cm.; 42in. £2,000-3,000

342 A brass Chandelier of Dutch 18th Century design, the multi-baluster knopped stem with central bulbous section supporting six 'S'-scrolled branches surmounted by birds, terminating in wide drip-pans and tulip-shaped sconces, 58cm.; 23in. £1,000-1,500

343 A similar smaller six-branch Chandelier, the multi-baluster stem with brass reflectors above scrolled branches, 45cm.; 18in. £600-1,000

344 A Dutch brass six-branch Chandelier, 19th Century, with ball and baluster stem supporting scrolled branches in the form of deer, with wide drip-pans and moulded nozzles and a row of shaped reflectors above, 48cm.; 19in. £400-600

345 □ A brass Taperstick, with reeded domed octagonal base and octagonal baluster stem and nozzle, 11cm.; 4½in. £300-400



341

346 □ An engraved brass Candlestick, French, early 18th Century, with canted square base and baluster stem, engraved all-over with flowers and shells, 18cm.; 7in. £150-200

347 □ A Dutch brass 'Heemskerk' Candlestick, 17th Century, with domed base, multi-baluster stem and wide mid drip-pan, 22cm.; 8½in. £250-350

348 □ A pair of Queen Anne or George I brass Candlesticks, circa 1720, each with slightly dished circular base rising to a baluster stem and moulded nozzle, 15cm.; 6in. £300-400

349 A pair of brass Candlesticks, probably French, circa 1720, each with domed base and octagonal knopped baluster stem, 19cm.; 7½in. £300-400