



Days of Sale

---

WEALDEN ROOM

Oak and Country Furniture, Textiles,  
Metalwork and Works of Art

Tuesday 9th April 1991 at 10.30 am

On View: Friday 5th April 1991, 10.00 am–4.00 pm,  
Saturday 6th April 1991, 9.30 am–12.30 pm  
and Monday 8th April 1991, 10.00 am–4.00 pm

---

CISSBURY ROOM

Good Glass, English and Continental Ceramics

Wednesday 10th April 1991 at 10.30 am

On View: Saturday 6th April 1991, 9.30 am–12.30 pm,  
Monday 8th April 1991, 10.00 am–4.00 pm  
and Tuesday 9th April 1991, 10.00 am–4.00 pm

---

CISSBURY ROOM

Teddy Bears, Dolls, Rocking Horses,  
Tinplate and Die-cast Toys

Monday 15th April 1991 at 2.00 pm

On View: Friday 12th April 1991, 11.00 am–4.00 pm,  
Saturday 13th April 1991, 9.30 am–12.30 pm  
and Monday 15th April 1991, 10.00 am–1.00 pm

---

WEALDEN ROOM

Eastern Carpets and Rugs

Tuesday 16th April 1991 at 10.30 am

On View: Friday 12th April, 10.00 am–4.00 pm,  
Saturday 13th April 1991, 9.30 am–12.30 pm  
and Monday 15th April 1991, 10.00 am–4.00 pm

---

which will be sold  
by

**SOTHEBY'S**  
FOUNDED 1744

**Sussex**

Summers Place, Billingshurst, West Sussex RH14 9AD

Telephone: (0403) 783933

Fax: (0403) 785153

Illustrated Catalogue £10.00

Sotheby's London: Registered at 34-35 New Bond Street, London W1A 2AA  
No. 1222607

Front Cover: Lot 137

Back Cover: Lot 1792

- 313 A Fenland carved wood Decoy Duck, with paint decoration, 37cm.; 14½in. long; and a staved and coopered wood Costrel, with glass ends, 25.5cm.; 10in. wide (2) £100–200
- 314 A chip-carved fruitwood rectangular Domino Box, late 18th Century, decorated with roundels and rectangles, the interior with bone dominoes, 24cm.; 9½in. long £250–400
- 315 A novelty carved wood Figure of an old lady taking snuff, English, 19th Century, the seated figure with glass eyes and high mob cap and with one hand raised, 25cm.; 10in. £300–500
- 316 A Victorian sycamore cylindrical Spice Canister, circa 1850, with five compartments, paper label now worn, 28cm.; 11in. £100–200
- 317 A collection of five sycamore Butter Prints, 19th Century; together with a Dice Shaker with three dice; and further treen, including: a cuckoo lure, a tuning fork in case, a leather tool, a glass cutter and a spinning top (11) £200–250
- 318 An elm and iron banded Grain Scoop, late 19th Century, rectangular with sloping end, 76cm.; 30in. long £100–200
- 319 A fruitwood heart-shaped treen Box, Welsh, late 18th/early 19th Century, the lid with three swirled geometric roundels on a punched ground, the sides with matching punched decoration, 6.5cm.; 2½in. wide £250–350
- 320
- 321 A yew-wood and pewter inlaid shoe Snuff Box, Anglo-Dutch, early 19th Century, the lift-off lid inlaid with the figure of a soldier, the body with foliate decoration, 11.5cm.; 4½in. long £350–500
- 322 A pair of chip-carved and engraved fruitwood Nutcrackers, dated 1797, initialled P.W. and T.L., with foliate decoration, 12cm.; 4¾in. £250–300
- 323 A carved oak and paper Puzzle, dated 1684, in the form of a rectangular case with painted sliding lid and shaped end, enclosing a paper inscribed with verse, 27cm.; 10½in. £200–300
- 324 A turned walnut cylindrical Gambling Board, late 18th Century, the border rim with painted numerals, with a brass spinning arrow, 22cm.; 8¾in. £400–500
- 325 A carved wood Figure of a gentleman in Elizabethan dress, probably 18th Century, standing in an integral arched cupola, 13cm.; 5in. £250–300
- 326 A sycamore Platter, 18th Century, with Owen Evan Thomas' Collection label, 23cm.; 9in. £80–120



315

- 327 A collection of four novelty pewter Shoes, circa 1900, 14cm.; 5½in. long on average £100–150
- 328 An unusual Advertising Diorama of a bicycle, 20th Century, in glazed wood case, inscribed 'Raleigh' model of the all-steel bicycle, maker's label Bathe & Brown, London, 103cm. high by 160cm. wide; 40½ by 63in. £300–500

#### PEWTER

- 330 Miscellaneous Pewter, 19th/early 20th Century, including four straight-sided Tavern Mugs, five tulip-shaped Tavern Mugs, five baluster Measures, two Mustard Pots, one Shaker, one pricket Candlestick and other items (23) £150–250
- 331 A collection of Continental Plates, 18th and 19th Century, 36 to 20cm.; 14 to 8in. diam. (8); and six assorted Mugs or Measures (14 in all) £150–200
- 332 A Stuart triple reeded rim Plate by John Tubb, circa 1690, 'hallmarks' and ownership initials to rim, touch adverso, 22.5cm.; 8¾in. [O.P. No. 4821]; and another similar Plate by the same maker, with plain rim (2) £120–180
- 333 A tapering Beaker, circa 1690, now with the touch of William Eddon on the base, the body with three engraved girdles, 17cm.; 6½in. £200–300
- 334 A Spanish or Portuguese 'bun' lidded Flagon, 18th Century, with bulbous body, domed lid and erect thumbpiece, inscribed in base BAPTISTA BAVLINA IOAO, 25cm.; 9¾in. £200–300
- 335 A similar smaller Flagon, 18th Century, 21cm.; 8¼in. £150–200
- 336 A Swiss Kurbiskanne, made by Franz Ludwig Naftzger of Thun, 2nd half 18th Century, the body of typical form with hooked handle, the flat heart-shaped cover stamped with maker's touch and having erect thumbpiece, 27.5cm.; 10¾in. £250–400
- 337 An unusual Chalice, with deep bowl and knopped cylindrical stem, on flat circular base, 20cm.; 8in., perhaps 17th Century, repaired; and a small Paten, circa 1700, stamped with initials M.L. and 'hallmarks' of the maker, split, 10cm.; 4in. diam. (2) £200–300
- 338 A straight-sided lidded Measure by the maker L.C., French, circa 1870, of demi-decilitre capacity, 9cm.; 3½in.; a shouldered lidless Measure, Paris, 19th Century, 13cm.; 5in.; and a shouldered lidded Measure, with rounded body, probably Chartres, 15cm.; 6in. (3) £150–200
- 339 A matched set of lidded straight-sided Measures by various makers, French, mid to late 19th Century, each with square handle, erect thumbpiece and heart-shaped lids, from double-litre to centilitre, 26 to 8cm.; 10 to 3in. £450–550
- 340 A Pichet or lidded Flagon of shouldered form, Normandy, attributed to Liseux, 18th Century, with twin acorn thumbpiece and flat heart-shaped lid, 24.5cm.; 9½in.; and a tapering straight-sided Measure, with rounded domed lid probably Picardy, late 18th Century, with twin acorn thumbpiece and ball knob, 27cm.; 10½in. (2) £250–350
- 341 A shouldered lidded Measure, Normandy, 19th Century, of two-litre capacity, flat lid and strap handle, 26.5cm.; 10½in.; and another similar, smaller Measure, late 18th Century, of quarter-litre capacity, 14cm.; 5½in. £250–300
- 342 A small spouted Jug, French, 18th Century, marked with a crowned hammer and the initials F.L., dated 1748, 6cm.; 2½in.; a round Pomade Pot with screw lid, French, 19th Century, inscribed Fge LE ROY DE LA FAUDIGNERE FEMME DUVAL, 4.5cm.; 1¾in.; a shouldered Flagon, with round body and flat lid, Swiss, 18th Century, with twin acorn thumbpiece, 21cm.; 8¼in.; and a straight-sided conical or tapering Measure, with flat lid, Swiss, 10cm.; 3¾in. (4) £200–300
- 343 Miscellaneous Items, comprising: an English oval reeded rim Dish, 18th Century, 35cm.; 14in.; two single reeded rim Plates, Italian, 18th Century, 22.5cm.; 8¾in.; a Sandwich Box; a lead Inkwell; two German miniature toy Jugs; and four assorted Irish Measures (11) £150–200



336

355

352

349



350 One of a pair

347 **Miscellaneous Dishes and Plates**, comprising: a pair of Plates by *Wm. Glover*, 18th Century, with engraved crest of owl to rim and touch marks adverso, 25cm.; 10in.; two further Plates and a Dish, 42cm.; 16½in. diam, all 18th Century, three reproduction Plates; and the tops of two Hot Plates (10) £250-300

348 **A broad-rimmed Plate**, circa 1672, the rim with ownership initials *P.M.* and indistinct 'hallmarks', touch adverso of a shield and date 1672 and touch of . . . *B.*, 22.2cm.; 8¾in. diam. £400-500

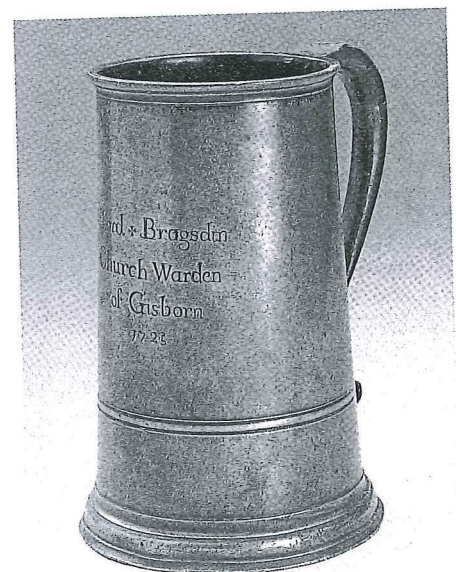
349 **A Scottish quart capacity baluster Measure**, early 19th Century, with flat lid and embryo shell thumbpiece, the rim with *Geo. IV* stamp, ownership initials and other stamps, 20.5cm.; 8in. £250-300

350 **A pair of Georgian Irish Flagons**, mid-18th Century, each with wide skirt, slightly tapering straight-sided body with spout, double-domed cover, ridged thumbpiece and boldly-looped handle with shield terminal, 29.5cm.; 11½in. (2) £1,200-1,800

351 **A plain rim Dish** by *J. Ingram*, circa 1780, 34cm.; 13½in. [O.P. 5725]; together with four Plates by the same maker, 24.5cm.; 9¾in. diam., all with touch marks adverso, one plate with hole and damaged (5) £200-250

352 **A near-set of four Irish Chalice**, 1st half 18th Century, each with plain cylindrical slightly tapering body on a thick knopped stem and double-domed foot, some minor damage, 21.5cm.; 8½in. £400-600

See *Pewter of the Western World*, Peter Hornsby, plate 175 for similar.



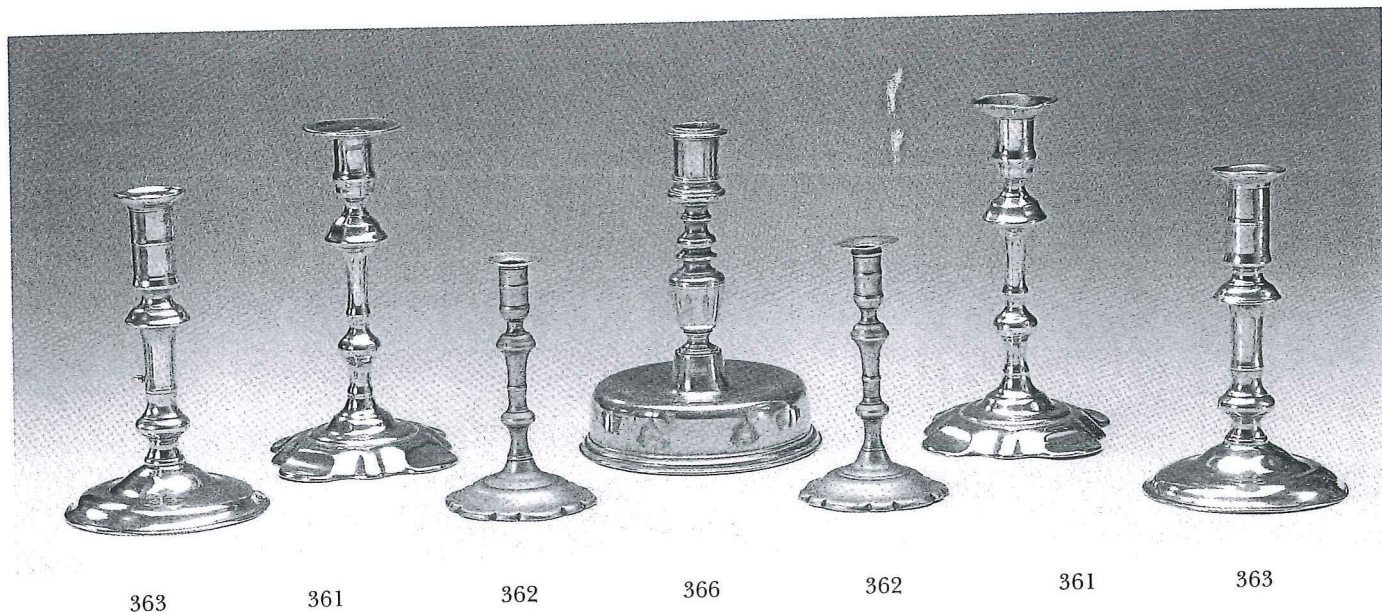
353


353 **A Church Flagon** by the maker *T.B.*, circa 1720, the slightly tapering body with a moulded fillet and domed skirt engraved *Richard Bragsdin, Church Warden of Gisborn, 1725*, the handle with spade terminal, 23cm.; 9in. £500-550  
Cottrell O.P., No. 5478A.

344 **An hexagonal Flask** by *J. G. Herbst*, German, 18th Century, the body inscribed *IABD 1713*, the cast handle with relief decoration, 24cm.; 9½in. £180-220


345 **A tapering Stitzen**, German, 18th Century, with flat lid and erect thumbpiece, decorated with later engraving of foliage, shields and a Knight, 23cm.; 9in. £180-220

346 **An English Capstan Salt** of late 17th Century design, 8.5cm.; 3.3in. £40-80



354  A rare 'York' Flagon by the maker *I.W.*, circa 1710, the plain tapering drum with four hooped bands around the base on a domed skirt, the double-domed cover with a 'York scroll' thumbpiece, the handle with 'boot-heel' terminal, maker's touch [Cott. No. 6002] inside base, 28.6cm.; 11<sup>1</sup>/<sub>4</sub>in. £2,500-3,000

Formerly lot 99, Sotheby's, Bond Street, 9th July, 1970. Previously in the collections of Alfred E. Yeates and Gwendolin E. Smith. A similar tankard is illustrated in Cotterell's *Old Pewter*, page 107, fig. e.

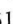
355  A Queen Anne period double-domed lid Tankard, circa 1700, the tapering body with an engraved girdle on a domed skirt, having (later) 'ram's-horn' thumbpiece, indistinct touch mark in base, possibly *W.P.*, 18cm.; 7in. £400-500

356 A late Georgian lidded Tankard, circa 1800, with domed lid, palmette thumbpiece, scroll handle and straight-sided body with engraved fillets, 21cm.; 8<sup>1</sup>/<sub>2</sub>in. £200-250

#### BRASS, COPPER AND IRONWORK


359 A brass Warming Pan, Anglo-Dutch, early 18th Century, with turned wood side handle and a pierced and engraved vase of flowers on the lid, 121cm.; 47in. £500-700


360 A Dutch brass 'Heemskerck' Candlestick, 17th Century, with domed base, multi-baluster stem and wide mid drip-pan, 22cm.; 8<sup>1</sup>/<sub>2</sub>in. £150-200

361  A pair of Georgian brass Candlesticks, circa 1750, each with petal base and double knopped stem, one drip-pan restored, 20cm.; 8in. £400-500




354

362  A pair of small brass Georgian Candlesticks, circa 1740, each with scalloped petal base and double knopped slender stem, 14.5cm.; 5<sup>3</sup>/<sub>4</sub>in. £300-500

363  A pair of Georgian brass side-ejector Candlesticks, circa 1730, each with domed circular base and knopped stem, 18cm.; 7in. £200-300

364 A pair of engraved brass Candlesticks, French, 19th Century, each with circular base, double-knopped stem decorated with beading, gadrooning and foliate decoration, 28cm.; 11in. £300-400

365 An engraved brass Candlestick, French, 18th Century, with octagonal base and all-over foliate decoration, 24cm.; 9<sup>1</sup>/<sub>2</sub>in. £100-150

366  A Spanish brass Candlestick, circa 1700, with domed wide skirt base and baluster stem, 20cm.; 8in. £250-300

367 A pair of brass Wall Sconces, each with egg and dart moulded oval backplate, with 'S'-shaped branch, 17cm.; 6<sup>3</sup>/<sub>4</sub>in. £600-800

368 A Dutch brass and copper engraved rectangular Tobacco Box, 18th Century, 12cm.; 4<sup>3</sup>/<sub>4</sub>in. £100-200

369 A steel engraved Tinder Box, 18th Century, inscribed *Rich<sup>d</sup>. Tomkies, Skinner, Manchester*, 9.5cm.; 3<sup>3</sup>/<sub>4</sub>in. wide; and an iron Gauntlet, 18th Century, 25cm.; 10in. (2) £100-200

370 A Dutch brass six-branch Chandelier, 19th Century, with ball and baluster stem supporting scrolled branches in the form of deer, with wide drip-pans, moulded nozzles and a row of shaped reflectors above, 48cm.; 19in. £350-400

371 A brass bedroom Fender, early 19th Century, with pierced rim applied with projecting gadrooned band, below a 'D'-shaped top-rail, on three paw feet, 78cm.; 31in. wide £200-300

372 A brass Chandelier of Dutch 18th Century design, the multi-baluster knopped stem with central bulbous section supporting six 'S'-scrolled branches surmounted by birds, terminating in wide drip-pans and tulip-shaped sconces, 58cm.; 23in. £400-600