

EXL

Days of Sale

WEALDEN ROOM

Continental Furniture

Tuesday 19th November 1991 at 10.00 am

WEALDEN ROOM

Continental Clocks, Works of Art, Bronzes, Sculpture and Tapestries

Tuesday 19th November 1991 at 2.00 pm

On View:

Friday 15th November 1991, 10.00 am–4.00 pm,
Saturday 16th November 1991, 9.30 am–12.30 pm,
Sunday 17th November 1991, 2.00 pm–4.00 pm
and Monday 18th November 1991, 10.00 am–4.00 pm

CISSBURY ROOM

Continental and Foreign Silver and Allied Wares, Early Continental Ceramics

Wednesday 20th November 1991 at 10.30 am

CISSBURY ROOM

Meissen and 19th Century Continental Ceramics

Wednesday 20th November 1991 at 2.00 pm

On View:

Saturday 16th November 1991, 9.30 am–12.30 pm,
Sunday 17th November 1991, 2.00 pm–4.00 pm,
Monday 18th November 1991, 10.00 am–4.00 pm
and Tuesday 19th November 1991, 10.00 am–4.00 pm

which will be sold
by

SOTHEBY'S
FOUNDED 1744
Sussex

Summers Place, Billingshurst, West Sussex RH14 9AD
Telephone: (0403) 783933
Fax: (0403) 785153

Illustrated Catalogue £10.00

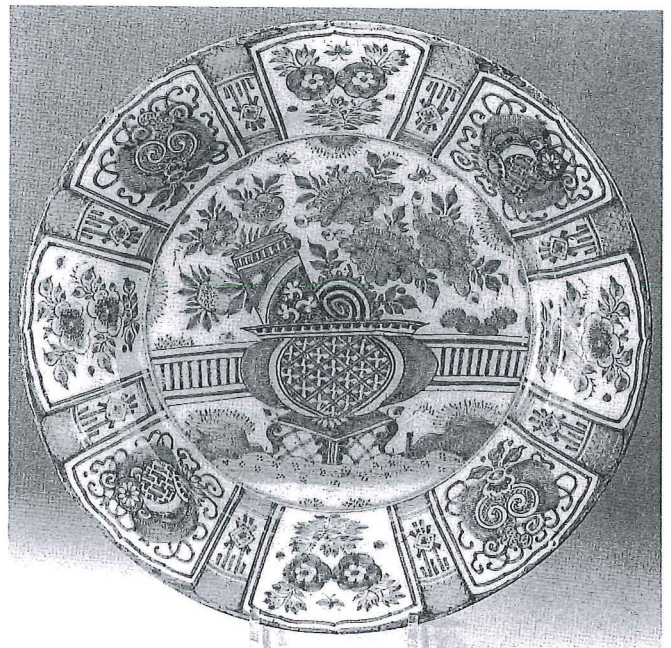
Sotheby's London: Registered at 34-35 New Bond Street, London W1A 2AA
No. 1222607

Back Cover: Lot 302

Erick Art Reference Library



670



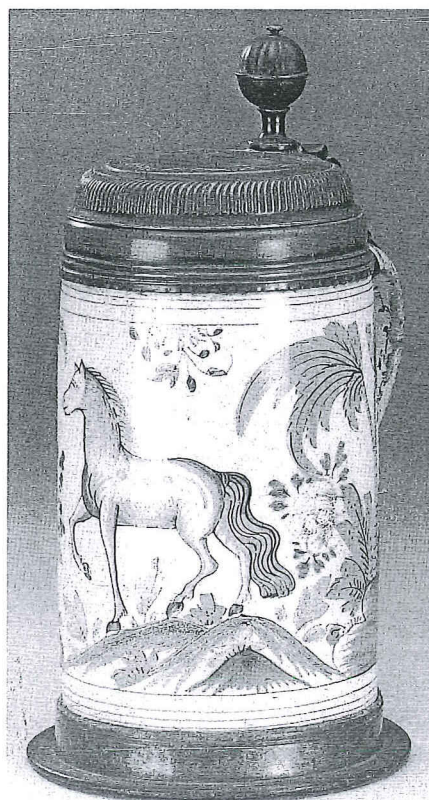
671

665  A German faience Plate, circa 1700, painted in blue in Chinese transitional style with an Oriental figure amidst stylised landscape, chips to back of rim, 18cm.; 7 $\frac{1}{2}$ in. £500-800

666 A Nuremberg faience Dish, 18th Century, the circular lobated rim repeated on the outside of the well with a slightly domed centre, painted with buildings amongst tall trees, the rim with floral panels, hairline crack to rim, minor glaze chips and rubbing to rim, 40.7cm.; 16in. diam. £400-600


667 A Kellinghusen faience Dish, circa 1800, painted in blue, green and yellow with stylised plants within blue and yellow line borders, 34.2cm.; 13 $\frac{1}{2}$ in. £300-400


668 A Pair of North-German faience Plates, late 18th Century, each piece boldly painted in emerald green with a spray of flowers within a sprigged border and green-lined shaped rim, rim chips, 24cm.; 9 $\frac{1}{2}$ in. (2) £400-600




672

669 A German blue and white Delftware Dish, 18th Century, of fluted oval form, the centre painted with a stylised peacock perched on a bush, the wide border of alternating flowers and jardinières within shaped panels, glued cracks and chips to rim, 38cm.; 15in. long, painted letter 'G' £400-600

670  A Pair of blue and white faience Vases, Frankfurt or Dutch, circa 1700, each cylindrical body painted with Oriental figures in landscape beneath a short waisted neck painted with a border of stiff leaves, chips to rim, 27.5cm.; 10 $\frac{3}{4}$ in. (2) £600-800

671  A faience Dish, 18th Century, probably German, painted in Wanli style, the centre with a jardinière of flowers and presents in front of a fence, the border with alternating panels of insects amongst flowers and mons, glaze chips to rim and hairline crack, 38.7cm.; 15 $\frac{1}{4}$ in. diam. £300-500

672  A Thuringian faience pewter-mounted Tankard, 18th Century, painted in blue with a horse flanked by green and yellow palm trees behind blue rocks, the domed and gadrooned pewter cover inscribed H.N. Jag, repair to handle, 24.5cm.; 9 $\frac{3}{8}$ in. £300-400

673 **A German faience pewter-mounted Tankard, mid-18th Century**, probably Erfurt, painted with three panels enclosing a flower sprig against sponged manganese, the ground scattered with stylised flowers, the domed pewter cover incised F.G.F., repair to handle, 26cm.; 10¹/₄in. £300-400

674 **An octagonal faience Inkstand, possibly Spanish, 17th/18th Century**, painted with alternating panels of birds and flowers in ochre within blue line borders, glaze chipped and hair-cracks, 7.7cm.; 3in. high £400-600

675 **A Friesian Delft Charger, circa 1720**, painted in the centre predominantly in manganese highlighted in ochre with a large cat, possibly a leopard, flanked by tall sponged trees, all within a border of stylised leaves and scallops, hair-crack, rim chips, 36cm.; 14¹/₂in. diam £500-700

676 **A Continental faience oval Dish, circa 1760**, of oval form, with a scrolling silver-shaped rim, painted with a Chinese 'famille-verte' palette, the centre with a bird perched in a tree amongst flowering plants, the rim with further floral sprays within a red and gilt dotted border, glaze chips to edge and minor rubbing, 39cm.; 15¹/₂in. long £700-1,000

677 **A Continental faience Toby Jug, late 18th/19th Century**, probably Brussels or Northern French, modelled with Napoleon seated astride a barrel, sponged in blue and yellow on a green sponged base, glaze chips, 27.25cm.; 10³/₄in. £300-500

678 **A Continental Delftware Vase, late 18th Century**, the ovoid shouldered body tapering to the base, painted with repeated stylised flowers, chips to rim foot and on body, 16.7cm.; 6¹/₂in. high £200-300

679 **A Höchst Damm Figure of a tramp, late 18th/19th Century**, the ginger haired figure sporting a lopsided grey wig, long green jacket and blue striped leggings, standing before a stump with a sack at his side, all raised on an irregular shaped grassy base, chips to stump, firing cracks to base, 33cm.; 13in., blue painted wheel mark and 'D' £200-300

680 **A Dutch Delftware Vase, late 17th Century**, the ovoid shouldered body tapering to a ringed foot, painted with a windmill overlooking the sea, a ship under sail to the side, within a shaped scroll panel, some glaze chipping to foot and rim, 21cm.; 8¹/₂in. high £200-300

681 **A Pair of Dutch Delft Models of shoes, circa 1710**, each moulded and painted with elaborate buckles and finely painted in blue with scrolling carnations, the tongues painted with a parrot perched in a ring, edges restored, 10cm.; 4in. (2) £400-600



673

682 **A Dutch Delft blue and white oviform Tobacco Jar and brass Cover, mid-18th Century**, painted with two Red Indians standing smoking pipes and flanking a label named for Rappé, 35.5cm.; 14in. high £300-500

682(a) **A Pair of Dutch Delft Vases, circa 1700**, of double-gourd form, painted in blue with a frieze of Chinoiserie figures in landscape between lappet borders, repair to rim of one vase, 35cm.; 13³/₄in. (2) £600-800

683 **A Dutch Delft blue and white oviform Tobacco Jar and brass Cover, mid-18th Century**, named Straats Burg within an elaborate diaper, scroll and foliate cartouche, surmounted by a vase of flowers, 33cm.; 13in., blue 'P' mark £250-350

684 **A Dutch Delft blue and white oviform Tobacco Jar and brass Cover, mid-18th Century**, named for Spaanse incised within an elaborate diaper, scroll and foliate cartouche surmounted by a basket of flowers, chips to rim, 30cm.; 11³/₄in., B.P. mark in blue (2) £200-300

685 **A Dutch Delft Dry Drug Jar, 18th Century**, of slightly waisted cylindrical form, blue painted Confliacintor within an elaborate cartouche, chips to foot, two hair-cracks to rim, 13.25cm.; 5¹/₄in. £200-300

686 **A Dutch Delft Wet Drug Jar, 18th Century**, the baluster body raised on a squat knopped stem and circular foot, painted in blue below the spout with an elaborate cartouche and labelled Granatorum, repair to spout, rim chips, 25cm.; 9³/₄in. £300-400

687 **A Group of three Dutch Delft Dry Drug Jars, 18th Century**, comprising: a baluster Jar with blue painted label Rosar beneath laurel swags encircling the initials AQ, a cylindrical Jar Oculare within an elaborate blue painted cartouche, and a smaller footed cylindrical Jar, Stomac D.B. within a similar cartouche, some damage and repair, tallest 23.5cm.; 9¹/₂in., painted 'P' or 'AF' to base (3) £200-300

688 **A miniature Dutch Delft Drug Jar, 18th Century**, the footed cylindrical body with an incised band on the body, painted in blue with an inscription E RORISMAR, a winged angel and floral swags below and songbirds either side of a basket of fruits above, glaze chips to foot and rim, 9.2cm.; 3¹/₂in. high, underglaze-blue letter 'S' £200-300

689 **A Dutch De Paauw Delft polychrome Dish, 18th Century**, the shallow circular dish centre painted with a female figure holding a cornucopia of flowers amongst other flowers, the rim with circular panels of stylised flowers, chips and hairline crack to rim, 34.4cm.; 13.5in. diam., incised mark £200-300

690 **A Dutch Delft double-gourd Vase, 18th Century**, painted in blue with a broad band of birds and insects amongst flower sprays beneath narrower bands of stylised flowers and leaves, very minor glaze chips to rim, 24.75cm.; 9³/₄in. £200-300

691 **A Dutch Delft double-gourd Vase, 18th Century**, painted in underglaze-blue with bands of repeating flower sprays and lappets, small chips to rim and foot, 25cm.; 9³/₄in. £200-300

692 **A Dutch Delft Charger, 18th Century**, painted in blue with a central vase of flowers within a shaped rim, rim chips, 35cm.; 13³/₄in., blue painted mark; also a Dutch Delft Charger, 18th Century; painted in blue with Chinoiserie figures; and a Charger painted with stylised flowers (3) £250-300

693 **A Set of five Dutch Delft Chargers, 18th Century**, each painted in the centre with a rock flanked by Chinoiserie flowers and fencing within a triple line border, surrounded by four groups of leaves and flowers issuing from rocky mounds, some with chips and cracks, 34cm.; 13³/₄in. diam. (5) £1,000-1,500